



Kean University

Student and Faculty Profile



Fall 2013
Office of Institutional Research

Quick Facts

Founded:	1855	President:	Dr. Dawood Farahi
Campus Size:	185.4 acres	Mailing Address:	1000 Morris Avenue Union, New Jersey 07083
Main Campus:	121.5 acres		
East Campus:	28.5 acres		
Liberty Hall Campus:	35.4 acres	Main Phone:	(908) 737-KEAN (908) 737-5326
Number of Colleges:	7		
		Admissions:	(908) 737-7100
Degree Programs Offered			
Undergraduate:	48	Public Info:	(908) 737-NEWS (908) 737-6397
Graduate			
- Master:	30		
- Post Master Professional Diploma:	2		
- Doctor:	2		
Average Class Size:	22		
Student/Faculty Ratio:	17:1		
2013-2014 Tuition and Fees:			
(Full-Time, In-State)			
Undergraduate:	\$10,917.50		
Graduate:	\$15,149.00		
Doctor:	\$17,102.00		

Contents

<i>Enrollment</i>	<i>Page 01</i>
<i>Degrees Conferred</i>	<i>Page 29</i>
<i>Employees</i>	<i>Page 39</i>
<i>Faculty</i>	<i>Page 43</i>



Kean University- Enrollment

Enrollment

Page 02	At-a-Glance
Page 04	Enrollment Trends
Page 06	Enrollment by Geographic Origin
Page 08	Retention & Graduation Rates
Page 10	Enrollment by Department and Program
Page 19	Second Majors by Program
Page 20	Course FTE

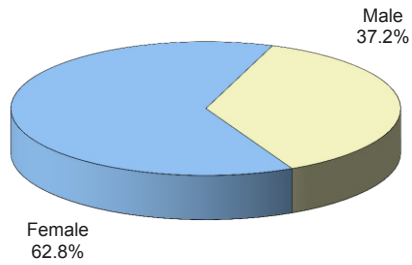


Fall 2013 Enrollment At-a-Glance (All Campuses)

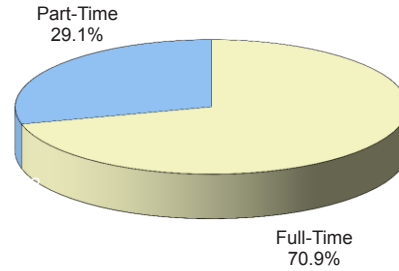
	UNIVERSITY		UNDERGRADUATE		GRADUATE	
	No.	%	No.	%	No.	%
ENROLLMENT						
Headcount	14,842	100%	12,516	100%	2,326	100%
F.T.E.	11368.2		10036.0		1332.2	
GENDER						
Male	5,516	37.2%	4,958	39.6%	558	24.0%
Female	9,326	62.8%	7,558	60.4%	1,768	76.0%
RACE / ETHNICITY						
Black	2,651	17.9%	2,217	17.7%	434	18.7%
Hispanic	3,201	21.6%	2,824	22.6%	377	16.2%
Asian	1,295	8.7%	1,172	9.4%	123	5.3%
White	5,418	36.5%	4,134	33.0%	1,284	55.2%
MultiRace	184	1.2%	161	1.3%	23	1.0%
Not Reported	2,093	14.1%	2,008	16.0%	85	3.7%
ATTENDANCE STATUS						
Full-Time	10,519	70.9%	9,689	77.4%	830	35.7%
Part-Time	4,323	29.1%	2,827	22.6%	1,496	64.3%
ADMISSION STATUS						
Regular	6,134	41.3%	3,976	31.8%	2,158	92.8%
Special	1,721	11.6%	1,721	13.8%		
E.O.F.	631	4.3%	631	5.0%		
Transfer	5,535	37.3%	5,535	44.2%		
E.O.F. Transfer	257	1.7%	257	2.1%		
Other	564	3.8%	396	3.2%	168	7.2%
REGISTRATION STATUS						
First-Time	2,609	17.6%	1,844	14.7%	765	32.9%
Transfer	1,438	9.7%	1,438	11.5%		
Stop-out / Readmit	606	4.1%	606	4.8%		
Continuing	10,189	68.6%	8,628	68.9%	1,561	67.1%
AGE						
<25	9,709	65.4%	9,225	73.7%	484	20.8%
25 - 34	3,267	22.0%	2,242	17.9%	1,025	44.1%
35 - 44	1,026	6.9%	603	4.8%	423	18.2%
45 - 54	625	4.2%	352	2.8%	273	11.7%
55+	215	1.4%	94	0.8%	121	5.2%
Average Age	25		24		33	
MATRICULATION STATUS						
Degree Seeking	14,079	94.9%	12,315	98.4%	1,764	75.8%
Certificate / Non-Degree	492	3.3%	98	0.8%	394	16.9%
Non-Matriculated	271	1.8%	103	0.8%	168	7.2%
STATE RESIDENCE						
New Jersey	13,905	93.7%	11,695	93.4%	2,210	95.0%
Out-of-State	304	2.0%	240	1.9%	64	2.8%
International	195	1.3%	143	1.1%	52	2.2%
Kean Wenzhou	438	3.0%	438	3.5%	0	0.0%

Additional information is available online at <http://ir.kean.edu>.

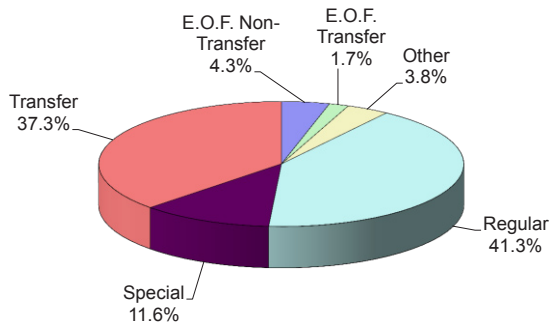
**DISTRIBUTION OF STUDENTS
By Gender**



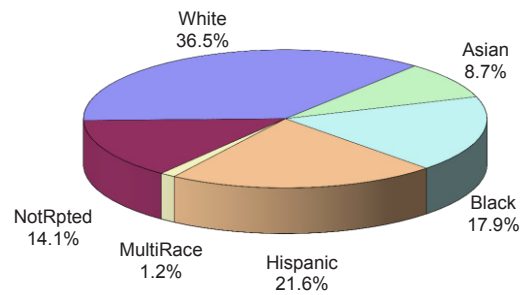
**DISTRIBUTION OF STUDENTS
By Attendance Status**



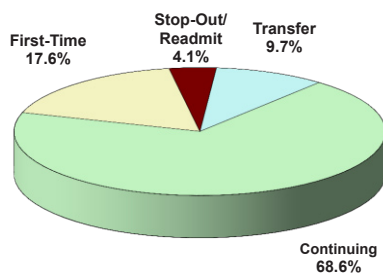
**DISTRIBUTION OF STUDENTS
By Admission Status**



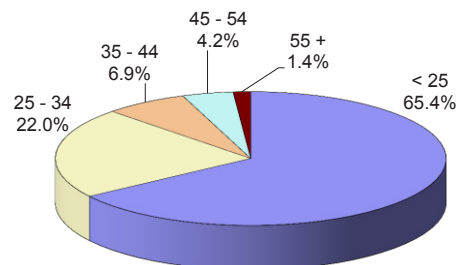
**DISTRIBUTION OF STUDENTS
By Race/Ethnicity**



**DISTRIBUTION OF STUDENTS
By Registration Status**



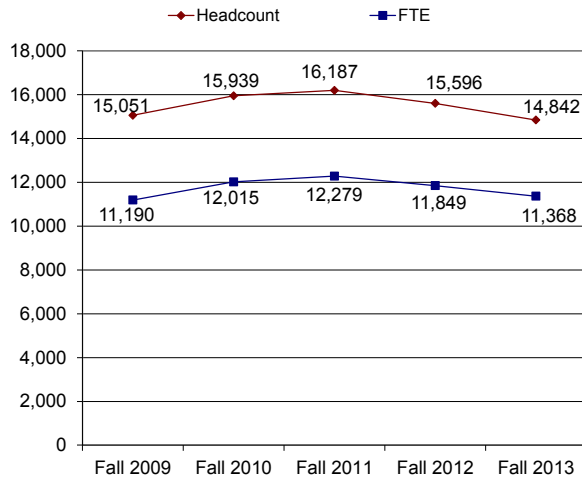
**DISTRIBUTION OF STUDENTS
By Age Group**



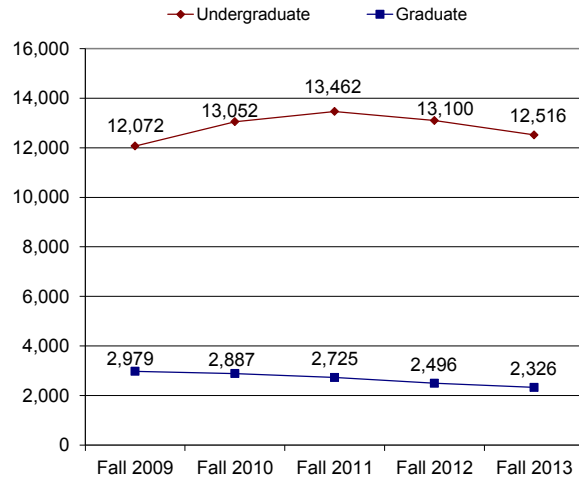
Enrollment Trends, Fall 2009 - Fall 2013 (All Campuses)

	FALL 2009	FALL 2010	FALL 2011	FALL 2012	FALL 2013	1 YEAR CHANGE	5 YEAR CHANGE
ENROLLMENT							
Headcount	15,051	15,939	16,187	15,596	14,842	-4.8%	-1.4%
Undergraduate	12,072	13,052	13,462	13,100	12,516	-4.5%	3.7%
Graduate	2,979	2,887	2,725	2,496	2,326	-6.8%	-21.9%
F.T.E.	11189.7	12015.2	12278.8	11849.1	11368.2	-4.1%	1.6%
GENDER							
Male	5,300	5,673	5,982	5,760	5,516	-4.2%	4.1%
Female	9,751	10,266	10,205	9,836	9,326	-5.2%	-4.4%
RACE/ ETHNICITY							
Black	2,804	2,989	3,029	2,759	2,651	-3.9%	-5.5%
Hispanic	2,909	3,344	3,515	3,269	3,201	-2.1%	10.0%
Asian	1,083	1,114	1,052	1,123	1,295	15.3%	19.6%
White	7,511	7,907	7,288	6,295	5,418	-13.9%	-27.9%
MultiRace	0	122	162	145	184	26.9%	
Not Reported	744	463	1,141	2,005	2,093	4.4%	181.3%
ATTENDANCE STATUS							
Full-Time	10,081	11,031	11,382	10,920	10,519	-3.7%	4.3%
Part-Time	4,970	4,908	4,805	4,676	4,323	-7.5%	-13.0%
ADMISSIONS STATUS							
Regular	6,432	6,725	6,656	6,268	6,134	-2.1%	-4.6%
Special	1,127	1,413	1,694	1,666	1,721	3.3%	52.7%
E.O.F.	918	806	735	625	631	1.0%	-31.3%
Transfer	5,475	6,083	6,313	6,044	5,535	-8.4%	1.1%
E.O.F. Transfer	323	324	302	312	257	-17.6%	-20.4%
Other	776	588	487	681	564	-17.2%	-27.3%
REGISTRATION STATUS							
First-Time	2,870	2,948	2,863	2,660	2,609	-1.9%	-9.1%
Transfer	1,733	1,914	1,691	1,505	1,438	-4.5%	-17.0%
Stop-out/ Readmit	583	588	662	620	606	-2.3%	3.9%
Continuing	9,865	10,489	10,971	10,811	10,189	-5.8%	3.3%
AGE							
<25	8,953	9,832	10,314	10,068	9,709	-3.6%	8.4%
25-34	3,638	3,761	3,672	3,516	3,267	-7.1%	-10.2%
35-44	1,309	1,278	1,179	1,106	1,026	-7.2%	-21.6%
45-54	872	831	783	690	625	-9.4%	-28.3%
55+	279	237	239	216	215	-0.5%	-22.9%
Average Age	26.59	26.10	25.74	25.58	25.43	-0.6%	-4.4%
MATRICULATION STATUS							
Degree Seeking	13,643	14,630	15,113	14,578	14,079	-3.4%	3.2%
Certificate/ Non-Degree	722	770	624	570	492	-13.7%	-31.9%
Non-Matriculated	686	539	450	448	271	-39.5%	-60.5%
STATE RESIDENCE							
New Jersey	14,494	15,364	15,646	14,905	13,905	-6.7%	-4.1%
Out-of-State	275	304	293	273	304	11.4%	10.5%
International	282	271	248	213	195	-8.5%	-30.9%
Wenzhou	0	0	0	205	438	113.7%	

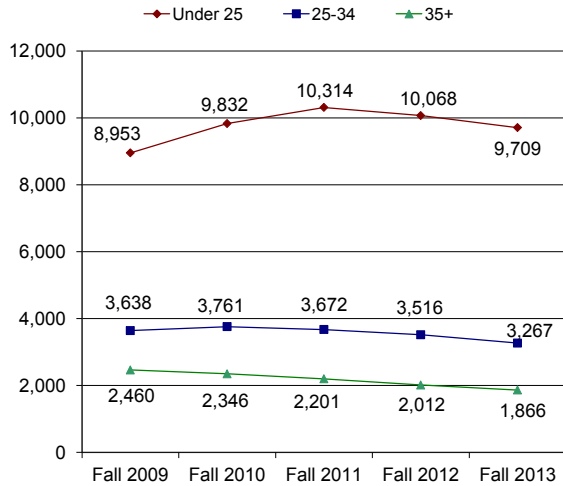
HEADCOUNT & FTE Fall 2009 - Fall 2013



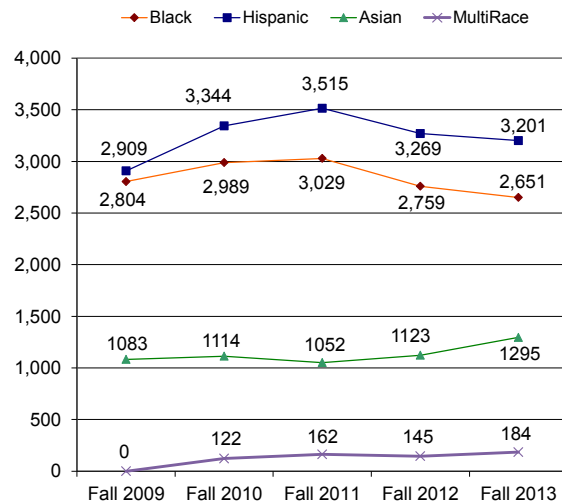
UNDERGRADUATE & GRADUATE Fall 2009 - Fall 2013



AGE GROUP Fall 2009 - Fall 2013



MINORITY Fall 2009 - Fall 2013



Enrollment by Geographic Origin (All Campuses)

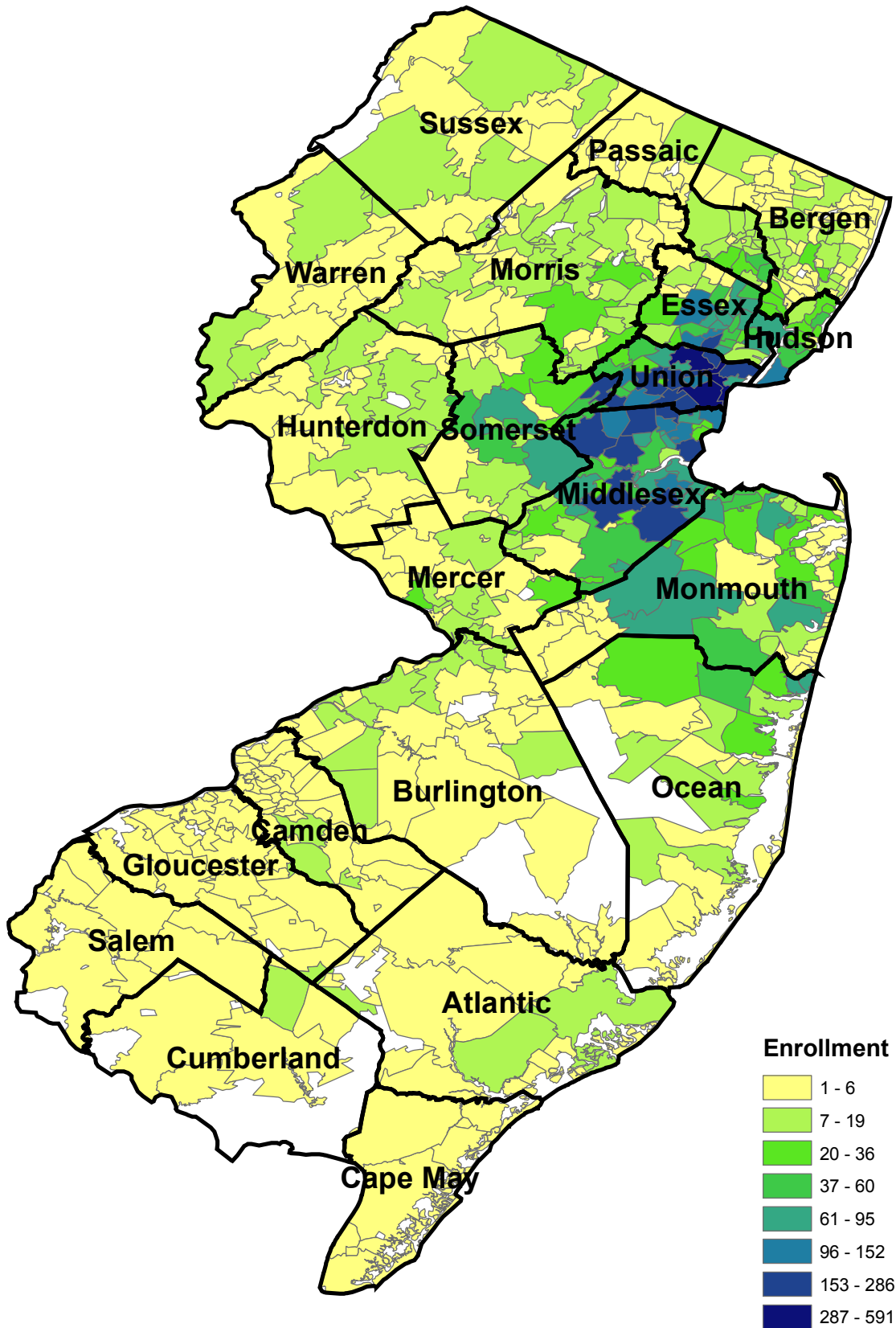
	FALL 2009	FALL 2010	FALL 2011	FALL 2012	FALL 2013		1-YEAR CHANGE	5-YEAR CHANGE
					No.	%		
NEW JERSEY RESIDENTS	14,494	15,364	15,646	14,905	13,905	93.7%	-6.7%	-4.1%
Union	3,819	3,946	4,101	3,815	3,655	24.6%	-4.2%	-4.3%
Middlesex	3,277	3,431	3,407	3,183	2,863	19.3%	-10.1%	-12.6%
Essex	1,734	1,802	1,752	1,675	1,621	10.9%	-3.2%	-6.5%
Ocean	1,219	1,429	1,540	1,609	1,424	9.6%	-11.5%	16.8%
Monmouth	971	1,041	1,048	961	856	5.8%	-10.9%	-11.8%
Hudson	628	707	789	753	741	5.0%	-1.6%	18.0%
Bergen	495	562	644	627	632	4.3%	0.8%	27.7%
Somerset	804	832	729	694	627	4.2%	-9.7%	-22.0%
Morris	445	448	406	384	359	2.4%	-6.5%	-19.3%
Passaic	303	305	292	327	299	2.0%	-8.6%	-1.3%
Mercer	155	175	221	210	176	1.2%	-16.2%	13.5%
Hunterdon	150	160	169	159	157	1.1%	-1.3%	4.7%
Burlington	130	133	148	148	138	0.9%	-6.8%	6.2%
Warren	98	109	102	83	86	0.6%	3.6%	-12.2%
Sussex	75	82	93	76	77	0.5%	1.3%	2.7%
Camden	72	76	84	85	70	0.5%	-17.6%	-2.8%
Atlantic	51	56	52	42	58	0.4%	38.1%	13.7%
Gloucester	38	39	35	35	37	0.2%	5.7%	-2.6%
Cape May	8	11	14	23	16	0.1%	-30.4%	100.0%
Cumberland	14	12	14	11	7	0.0%	-36.4%	-50.0%
Salem	8	8	6	5	6	0.0%	20.0%	-25.0%
NON-NJ RESIDENTS	275	304	293	273	304	2.0%	11.4%	10.5%
New York	204	218	214	197	221	1.5%	12.2%	8.3%
Pennsylvania	35	39	30	23	21	0.1%	-8.7%	-40.0%
Other	36	47	49	53	62	0.4%	17.0%	72.2%
INTERNATIONAL	282	271	248	213	195	1.3%	-8.5%	-30.9%
WENZHOU	0	0	0	205	438	3.0%	113.7%	
TOTAL	15,051	15,939	16,187	15,596	14,842	100.0%	-4.8%	-1.4%

Top 10 Countries of Citizenship for International Students (in alphabetical order)

Bermuda	Brazil
China	Colombia
Costa.RI	Ghana
India	Korea.S
Nigeria	Peru

International students come from 59 different countries and areas.

Fall 2013 Enrollment by ZIP Code



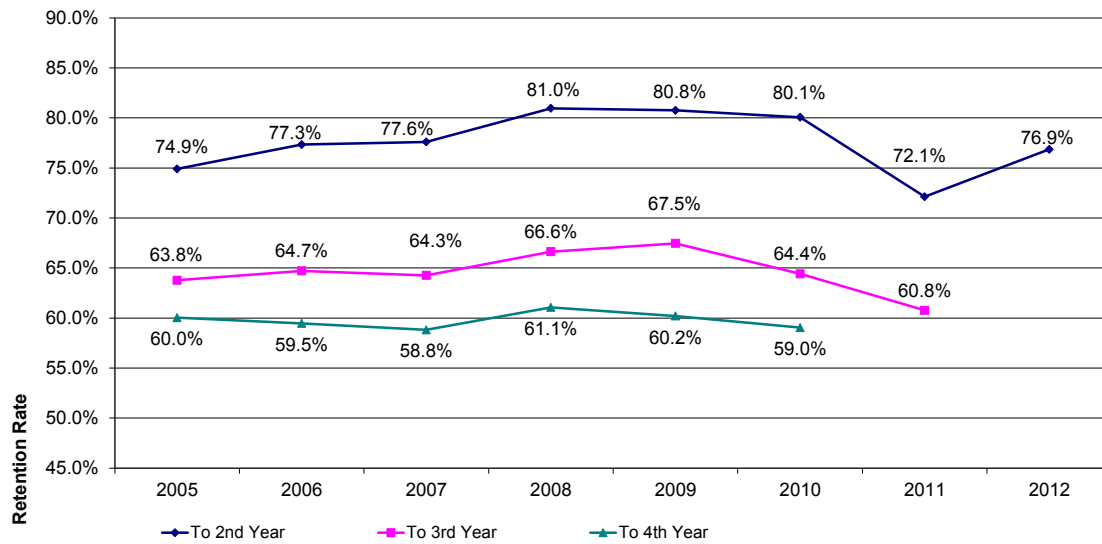
First-Time, Full-Time Freshmen Retention Rates (All Campuses)

COHORT YEAR	HEAD COUNT	# CONTINUED			% CONTINUED		
		TO 2ND YEAR	TO 3RD YEAR	TO 4TH YEAR	TO 2ND YEAR	TO 3RD YEAR	TO 4TH YEAR
2003	1,311	982	821	714	74.90%	62.62%	54.46%
2004	1,254	961	741	705	76.63%	59.09%	56.22%
2005	1,391	1,042	887	835	74.91%	63.77%	60.03%
2006	1,394	1,078	902	829	77.33%	64.71%	59.47%
2007	1,447	1,123	930	851	77.61%	64.27%	58.81%
2008	1,418	1,148	945	866	80.96%	66.64%	61.07%
2009	1,518	1,226	1,024	914	80.76%	67.46%	60.21%
2010	1,731	1,386	1,115	1,022	80.07%	64.41%	59.04%
2011	1,794	1,294	1,090	-	72.13%	60.76%	-
2012	1,586	1,219	-	-	76.86%	-	-

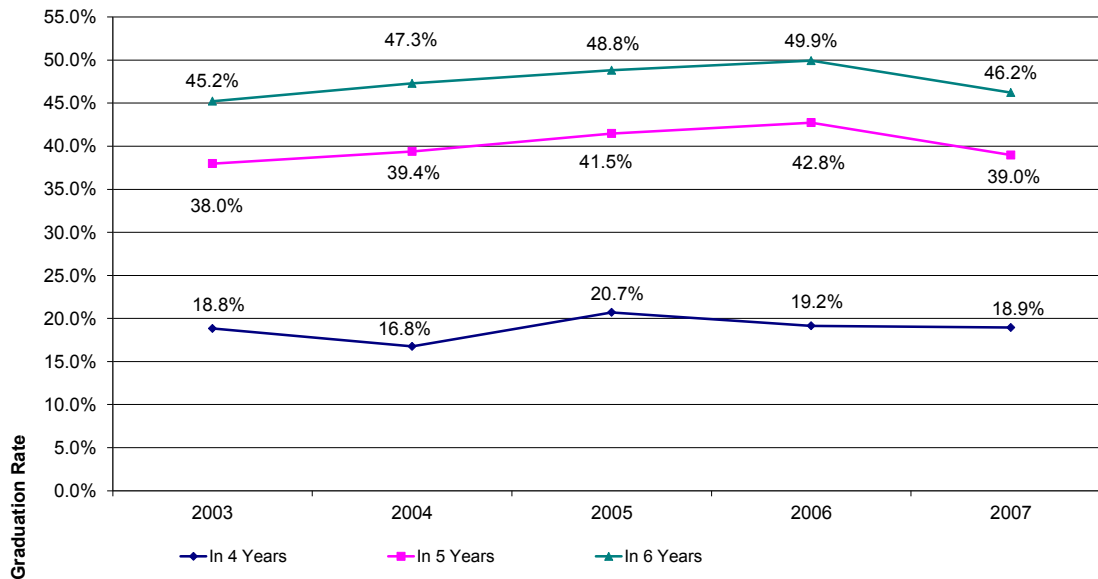
First-Time, Full-Time Freshmen Graduation Rates (All Campuses)

COHORT YEAR	HEAD COUNT	# GRADUATED			% GRADUATED		
		IN 4 YEARS	IN 5 YEARS	IN 6 YEARS	IN 4 YEARS	IN 5 YEARS	IN 6 YEARS
2003	1,311	247	498	593	18.84%	37.99%	45.23%
2004	1,254	210	494	593	16.75%	39.39%	47.29%
2005	1,391	288	577	679	20.70%	41.48%	48.81%
2006	1,394	267	596	696	19.15%	42.75%	49.93%
2007	1,447	274	564	669	18.94%	38.98%	46.23%

First-Time, Full-Time Degree-Seeking Undergraduate Retention Rates 2005 - 2012 Cohorts



First-Time, Full-Time Degree-Seeking Undergraduate Graduation Rates 2003 - 2007 Cohorts



Enrollment by Department and Program College of Business and Public Management (Union Campus)

	FALL 2009	FALL 2010	FALL 2011	FALL 2012	FALL 2013	1-YEAR CHANGE	5-YEAR CHANGE
ENROLLMENT							
Accounting/Finance							
Accounting (UG)	508	520	516	455	476	4.6%	-6.3%
Accounting (GR)	72	69	57	42	40	-4.8%	-44.4%
Finance (UG)	208	183	193	185	157	-15.1%	-24.5%
Accounting/Finance Total:	788	772	766	682	673	-1.3%	-14.6%
CrimJust/PubAdm							
Criminal Justice (UG)	589	688	778	742	587	-20.9%	-0.3%
Criminal Justice (GR)	1	3	4	12	16	33.3%	1500.0%
Public Admin. (UG)	106	123	125	109	115	5.5%	8.5%
Public Admin. (GR)	140	143	141	153	144	-5.9%	2.9%
CrimJust/PubAdm Total:	836	957	1,048	1,016	862	-15.2%	3.1%
Mgmt/Marketing							
Management Sci. (UG)	786	791	838	806	763	-5.3%	-2.9%
Marketing (UG)	276	253	265	248	256	3.2%	-7.2%
Mgmt/Marketing Total:	1,062	1,044	1,103	1,054	1,019	-3.3%	-4.0%
<i>BPM UG Total:</i>	<i>2,473</i>	<i>2,558</i>	<i>2,715</i>	<i>2,545</i>	<i>2,354</i>	<i>-7.5%</i>	<i>-4.8%</i>
<i>BPM GR Total:</i>	<i>213</i>	<i>215</i>	<i>202</i>	<i>207</i>	<i>200</i>	<i>-3.4%</i>	<i>-6.1%</i>
BPM Total:	2,686	2,773	2,917	2,752	2,554	-7.2%	-4.9%

** Kean Ocean and Kean Wenzhou numbers are in separate pages, not included here.

Enrollment by Department and Program College of Education (Union Campus)

	FALL 2009	FALL 2010	FALL 2011	FALL 2012	FALL 2013	1-YEAR CHANGE	5-YEAR CHANGE
ENROLLMENT							
Comm Disorder/Deaf							
GND.Speech Upgrade Proj (GR)	23	12	14	8	27	237.5%	17.4%
Speech Lang. Pathology (GR)	135	164	166	174	176	1.1%	30.4%
Speech, Lang Hear. Sci. (UG)	205	234	235	200	201	0.5%	-2.0%
Comm Disorder/Deaf Total:	363	410	415	382	404	5.8%	11.3%
Curriculum Teaching							
Early Childhood Edu. (UG)	562	580	510	424	374	-11.8%	-33.5%
Early Childhood Edu. (GR)	60	49	49	44	33	-25.0%	-45.0%
Elem/Mid/Sec Edu (UG)	942	929	858	700	559	-20.1%	-40.7%
Instruction & Curriculum (GR)	176	237	177	158	116	-26.6%	-34.1%
Curriculum Teaching Total:	1,740	1,795	1,594	1,326	1,082	-18.4%	-37.8%
Global Edu Innovation							
Spanish (UG)	152	154	87	65	62	-4.6%	-59.2%
Global Edu Innovation Total:	152	154	87	65	62	-4.6%	-59.2%
Phys Ed/Rec/Health							
Athletic Training (UG)	98	124	168	184	190	3.3%	93.9%
Exercise Science (GR)	17	17	23	22	25	13.6%	47.1%
Physical Edu (UG)	634	663	588	516	413	-20.0%	-34.9%
Recreation Admin. (UG)	89	89	119	120	144	20.0%	61.8%
Phys Ed/Rec/Health Total:	838	893	898	842	772	-8.3%	-7.9%
Special Edu/Literacy							
Edu/Media/Spec. (GR)	17	7	3	0	0	*	*
Reading Spec. (GR)	72	55	37	39	26	-33.3%	-63.9%
Special Edu (GR)	365	355	325	294	273	-7.1%	-25.2%
Teacher of Stu with Disabilities (UG)	355	423	441	434	345	-20.5%	-2.8%
Special Edu/Literacy Total:	809	840	806	767	644	-16.0%	-20.4%
<i>EDU UG Total:</i>	<i>3,037</i>	<i>3,196</i>	<i>3,006</i>	<i>2,643</i>	<i>2,288</i>	<i>-13.4%</i>	<i>-24.7%</i>
<i>EDU GR Total:</i>	<i>865</i>	<i>896</i>	<i>794</i>	<i>739</i>	<i>676</i>	<i>-8.5%</i>	<i>-21.8%</i>
EDU Total:	3,902	4,092	3,800	3,382	2,964	-12.4%	-24.0%

* Phasing-Out program

** Kean Ocean and Kean Wenzhou numbers are in separate pages, not included here.

Enrollment by Department and Program College of Humanities and Social Sciences (Union Campus)

	FALL 2009	FALL 2010	FALL 2011	FALL 2012	FALL 2013	1-YEAR CHANGE	5-YEAR CHANGE
ENROLLMENT							
Communication							
Communication (UG)	249	338	520	540	553	2.4%	122.1%
Communication Studies (GR)	14	16	21	21	37	76.2%	164.3%
Media Film (UG)	184	137	57	21	4	-81.0%	-97.8%
Communication Total:	447	491	598	582	594	2.1%	32.9%
English							
English (UG)	389	433	400	351	349	-0.6%	-10.3%
English Writing (GR)	2	11	14	15	18	20.0%	800.0%
English Total:	391	444	414	366	367	0.3%	-6.1%
Gen Studies							
Philosophy and Religion (UG)	15	7	1	0	0	*	*
Gen Studies Total:	15	7	1	0	0		
History							
Asian Studies (UG)	0	0	0	0	4		
History (UG)	363	371	345	313	241	-23.0%	-33.6%
Holocaust & Genocide (GR)	20	14	9	16	18	12.5%	-10.0%
History Total:	383	385	354	329	263	-20.1%	-31.3%
Psychology							
Behavioral Sci (GR)	44	17	6	2	1	*	*
Edu Psych (GR)	14	10	4	2	19	*	*
Marri & Fam Therapy (GR)	18	24	31	37	42	13.5%	133.3%
Psych Rehab (UG)	50	69	78	101	105	4.0%	110.0%
Psychology (UG)	895	1,055	1,166	1,167	1,134	-2.8%	26.7%
Psychology (GR)	5	44	61	66	58	-12.1%	1060.0%
Psychology Total:	1,026	1,219	1,346	1,375	1,359	-1.2%	32.5%
Social Sciences							
Economics (UG)	132	88	72	61	55	-9.8%	-58.3%
Political Science (UG)	127	105	107	104	98	-5.8%	-22.8%
Political Science (GR)	10	16	10	4	2	-50.0%	-80.0%
Soc/SocJust (GR)	24	26	31	34	27	-20.6%	12.5%
Sociology (UG)	206	254	228	203	187	-7.9%	-9.2%
Social Sciences Total:	499	489	448	406	369	-9.1%	-26.1%
Social Work							
Social Work (UG)	204	64	1	0	0	*	*
Social Work Total:	204	64	1	0	0		
<i>HSS UG Total:</i>	<i>2,814</i>	<i>2,921</i>	<i>2,975</i>	<i>2,861</i>	<i>2,730</i>	<i>-4.6%</i>	<i>-3.0%</i>
<i>HSS GR Total:</i>	<i>151</i>	<i>178</i>	<i>187</i>	<i>197</i>	<i>222</i>	<i>12.7%</i>	<i>47.0%</i>
HSS Total:	2,965	3,099	3,162	3,058	2,952	-3.5%	-0.4%

* Phasing-Out program

** Kean Ocean and Kean Wenzhou numbers are in separate pages, not included here.

Enrollment by Department and Program

College of Natural, Applied, and Health Sciences

(Union Campus)

	FALL 2009	FALL 2010	FALL 2011	FALL 2012	FALL 2013	1-YEAR CHANGE	5-YEAR CHANGE
ENROLLMENT							
Computer Science							
Computer Info. Systems (GR)	0	0	2	9	19	111.1%	
Computer Science (UG)	157	178	213	204	228	11.8%	45.2%
Electronics Tech. (UG)	7	1	0	0	0	*	*
Information Technology (UG)	24	52	70	87	88	1.1%	266.7%
Computer Science Total:	188	231	285	300	335	11.7%	78.2%
Env Sust Sci							
Biology-BS (UG)	194	222	266	261	218	-16.5%	12.4%
Earth Science - BS (UG)	38	43	34	28	21	-25.0%	-44.7%
Sustainability Science (UG)	0	9	26	26	34	30.8%	
Env Sust Sci Total:	232	274	326	315	273	-13.3%	17.7%
Mathematics							
Comp/Stat/Math. (GR)	7	7	5	2	2	*	*
Math. Edu. (GR)	10	11	12	14	15	7.1%	50.0%
Math. Science (UG)	265	307	279	259	208	-19.7%	-21.5%
Mathematics Total:	282	325	296	275	225	-18.2%	-20.2%
Natural Sciences							
Biology (UG)	426	548	641	699	746	6.7%	75.1%
Chemistry (UG)	90	100	102	103	99	-3.9%	10.0%
Earth Science (UG)	45	53	47	39	30	-23.1%	-33.3%
HIM (UG)	25	25	26	27	42	55.6%	68.0%
Medical Tech. (UG)	70	68	87	87	75	-13.8%	7.1%
Natural Sciences Total:	656	794	903	955	992	3.9%	51.2%
Nursing							
M.S.N./M.P.A. in Nursing (GR)	5	9	9	5	4	*	*
Nursing (UG)	213	218	248	256	235	-8.2%	10.3%
Nursing (GR)	73	83	92	97	87	-10.3%	19.2%
Nursing Total:	291	310	349	358	326	-8.9%	12.0%
<i>NAHS UG Total:</i>	<i>1,554</i>	<i>1,824</i>	<i>2,039</i>	<i>2,076</i>	<i>2,024</i>	<i>-2.5%</i>	<i>30.2%</i>
<i>NAHS GR Total:</i>	<i>95</i>	<i>110</i>	<i>120</i>	<i>127</i>	<i>127</i>	<i>0.0%</i>	<i>33.7%</i>
NAHS Total:	1,649	1,934	2,159	2,203	2,151	-2.4%	30.4%

* Phasing-Out program

** Kean Ocean and Kean Wenzhou numbers are in separate pages, not included here.

Enrollment by Department and Program College of Visual and Performing Arts (Union Campus)

	FALL 2009	FALL 2010	FALL 2011	FALL 2012	FALL 2013	1-YEAR CHANGE	5-YEAR CHANGE
ENROLLMENT							
Design							
Graphic Comm (UG)	49	47	27	16	6	*	*
Graphic Comm (GR)	16	12	10	7	1	*	*
Industrial Design (UG)	54	67	69	63	64	1.6%	18.5%
Interior Design (UG)	156	171	157	155	147	-5.2%	-5.8%
Visual Comm (UG)	150	169	197	203	214	5.4%	42.7%
Design Total:	425	466	460	444	432	-2.7%	1.6%
Fine Arts							
Art History (UG)	15	13	16	16	18	12.5%	20.0%
Fine Arts (UG)	120	112	105	98	81	-17.3%	-32.5%
Fine Arts Edu (GR)	48	46	42	36	30	-16.7%	-37.5%
Studio Art (UG)	37	48	59	54	48	-11.1%	29.7%
Fine Arts Total:	220	219	222	204	177	-13.2%	-19.5%
Liberal Studies - MA							
Liberal Studies (GR)	16	16	12	15	10	-33.3%	-37.5%
Liberal Studies - MA Total:	16	16	12	15	10	-33.3%	-37.5%
Music							
Music (UG)	33	33	41	42	28	-33.3%	-15.2%
Music - General Performance (UG)	0	0	0	0	5		
Music Edu. (UG)	43	58	64	64	53	-17.2%	23.3%
Music Total:	76	91	105	106	86	-18.9%	13.2%
Theatre							
Speech & Theatre (UG)	1	0	0	0	0	*	*
Theatre (UG)	65	61	107	107	90	-15.9%	38.5%
Theatre Design & Tech. (UG)	6	3	6	9	5	-44.4%	-16.7%
Theatre Performance (UG)	10	17	22	18	24	33.3%	140.0%
Theatre Total:	82	81	135	134	119	-11.2%	45.1%
<i>VPA UG Total:</i>	<i>739</i>	<i>799</i>	<i>870</i>	<i>845</i>	<i>783</i>	<i>-7.3%</i>	<i>6.0%</i>
<i>VPA GR Total:</i>	<i>80</i>	<i>74</i>	<i>64</i>	<i>58</i>	<i>41</i>	<i>-29.3%</i>	<i>-48.8%</i>
VPA Total:	819	873	934	903	824	-8.7%	0.6%

* Phasing-Out program

** Kean Ocean and Kean Wenzhou numbers are in separate pages, not included here.

Enrollment by Department and Program

Nathan Weiss Graduate College

(Union Campus)

	FALL 2009	FALL 2010	FALL 2011	FALL 2012	FALL 2013	1-YEAR CHANGE	5-YEAR CHANGE
ENROLLMENT							
Adv Stu Psyc							
PsyD.School & Clinical Psych (GR_D)	10	17	27	37	28	-24.3%	180.0%
School Psychology (GR)	24	28	32	33	28	-15.2%	16.7%
Adv Stu Psyc Total:	34	45	59	70	56	-20.0%	64.7%
Counselor Edu							
Counselor Edu (GR)	239	277	274	260	232	-10.8%	-2.9%
Counselor Edu Total:	239	277	274	260	232	-10.8%	-2.9%
Edu Leadership							
EdD.Urban/Leader (GR_D)	33	45	59	53	59	11.3%	78.8%
Edu Admin. (GR)	260	224	204	189	135	-28.6%	-48.1%
Edu Leadership Total:	293	269	263	242	194	-19.8%	-33.8%
Grad Mgmt Studies							
MBA in Global Management (GR)	112	96	69	57	70	22.8%	-37.5%
MIS (GR)	6	1	0	0	0	*	*
Grad Mgmt Studies Total:	118	97	69	57	70	22.8%	-40.7%
Occupational Therapy - GR							
Occupational Therapy (UG)	0	0	0	0	0		
Occupational Therapy (GR)	77	81	86	89	94	5.6%	22.1%
Occupational Therapy - GR Total:	77	81	86	89	94	5.6%	22.1%
Social Work - Graduate							
Social Work (GR)	113	122	141	118	103	-12.7%	-8.8%
Social Work - Graduate Total:	113	122	141	118	103	-12.7%	-8.8%
<i>NWGC UG Total:</i>	<i>0</i>	<i>0</i>	<i>0</i>	<i>0</i>	<i>0</i>		
<i>NWGC GR_D Total:</i>	<i>43</i>	<i>62</i>	<i>86</i>	<i>90</i>	<i>87</i>	<i>-3.3%</i>	<i>102.3%</i>
<i>NWGC GR Total:</i>	<i>831</i>	<i>829</i>	<i>806</i>	<i>746</i>	<i>662</i>	<i>-11.3%</i>	<i>-20.3%</i>
NWGC Total:	874	891	892	836	749	-10.4%	-14.3%

* Phasing-Out program

** Kean Ocean and Kean Wenzhou numbers are in separate pages, not included here.

Enrollment

Enrollment by Department and Program New Jersey Center *for* Science, Technology *and* Mathematics (Union Campus)

	FALL 2009	FALL 2010	FALL 2011	FALL 2012	FALL 2013	1-YEAR CHANGE	5-YEAR CHANGE
ENROLLMENT							
NJCSTM							
Biotechnology (GR)	26	24	38	30	27	-10.0%	3.8%
Instr Curr Sci Tech (GR)	0	0	18	12	12	0.0%	
Science & Tech. (UG)	106	88	104	99	109	10.1%	2.8%
Science & Tech. (GR)	5	4	5	2	6	200.0%	20.0%
NJCSTM Total:	137	116	165	143	154	7.7%	12.4%
<i>NJSTM UG Total:</i>	<i>106</i>	<i>88</i>	<i>104</i>	<i>99</i>	<i>109</i>	<i>10.1%</i>	<i>2.8%</i>
<i>NJSTM GR Total:</i>	<i>31</i>	<i>28</i>	<i>61</i>	<i>44</i>	<i>45</i>	<i>2.3%</i>	<i>45.2%</i>
NJSTM Total:	137	116	165	143	154	7.7%	12.4%

** Kean Ocean and Kean Wenzhou numbers are in separate pages, not included here.

Enrollment by Department and Program Kean Ocean

	FALL 2009	FALL 2010	FALL 2011	FALL 2012	FALL 2013	1-YEAR CHANGE	5-YEAR CHANGE
ENROLLMENT							
BPM							
Accounting (UG)	73	78	81	86	75	-12.8%	2.7%
Criminal Justice (UG)	65	80	81	78	73	-6.4%	12.3%
Finance (UG)	1	5	21	26	28	7.7%	2700.0%
Management Sci. (UG)	98	88	76	68	72	5.9%	-26.5%
Marketing (UG)	35	49	37	51	47	-7.8%	34.3%
Public Admin. (UG)	4	19	25	29	27	-6.9%	575.0%
Other	0	0	3	2	1	-50.0%	
BPM Total:	276	319	324	340	323	-5.0%	17.0%
EDU							
Elem/Mid/Sec Edu (UG)	109	140	134	130	115	-11.5%	5.5%
Physical Edu (UG)	61	80	81	75	56	-25.3%	-8.2%
Teacher of Stu with Disabilities (UG)	39	70	93	97	66	-32.0%	69.2%
Other	1	1	2	1	1	0.0%	0.0%
EDU Total:	210	291	310	303	238	-21.5%	13.3%
HSS							
English (UG)	44	59	75	69	55	-20.3%	25.0%
History (UG)	57	80	98	104	80	-23.1%	40.4%
Psychology (UG)	0	46	95	149	145	-2.7%	
Sociology (UG)	40	45	53	59	40	-32.2%	0.0%
Other	0	0	1	2	0	-100.0%	
HSS Total:	141	230	322	383	320	-16.4%	127.0%
NAHS							
Biology (UG)	12	26	35	36	38	5.6%	216.7%
Computer Science (UG)	4	9	10	6	7	16.7%	75.0%
Nursing (UG)	74	100	148	181	186	2.8%	151.4%
Nursing (GR)	17	10	10	16	48	200.0%	182.4%
Other	2	4	6	4	7	75.0%	250.0%
NAHS Total:	109	149	209	243	286	17.7%	162.4%
VPA							
Visual Comm (UG)	0	5	8	10	19	90.0%	
Other	1	1	1	1	2	100.0%	100.0%
VPA Total:	1	6	9	11	21	90.9%	2000.0%
NWGC							
Counselor Edu (GR)	6	5	11	12	24	100.0%	300.0%
Edu Admin. (GR)	9	7	5	1	17	1600.0%	88.9%
Other	0	0	9	6	6	0.0%	
NWGC Total:	15	12	25	19	47	147.4%	213.3%
Undeclared							
Other	0	0	0	0	1		
Undeclared Total:	0	0	0	0	1		
Kean Ocean UG Total:	719	986	1,161	1,262	1,140	-9.7%	58.6%
Kean Ocean GR Total:	33	22	39	38	106	178.9%	221.2%
Kean Ocean Total:	752	1,008	1,200	1,300	1,246	-4.2%	65.7%

Enrollment by Department and Program Kean Wenzhou

	FALL 2009	FALL 2010	FALL 2011	FALL 2012	FALL 2013	1-YEAR CHANGE	5-YEAR CHANGE
ENROLLMENT							
Wenzhou							
Accounting (UG)	0	0	0	50	119	138.0%	
Computer Science (UG)	0	0	0	27	56	107.4%	
English (UG)	0	0	0	80	118	47.5%	
Finance (UG)	0	0	0	48	116	141.7%	
Management Sci. (UG)	0	0	0	0	29		
Wenzhou Total:	0	0	0	205	438	113.7%	

Second Majors by Program (All Campuses)

	FALL 2009	FALL 2010	FALL 2011	FALL 2012	FALL 2013	1-YEAR CHANGE	5-YEAR CHANGE
ENROLLMENT							
Psychology	145	151	213	202	195	-3.5%	34.5%
Spanish	57	50	71	73	84	15.1%	47.4%
English	271	215	162	112	79	-29.5%	-70.8%
Math. Science	83	63	58	44	51	15.9%	-38.6%
History	163	156	104	63	47	-25.4%	-71.2%
Earth Science	78	78	83	73	40	-45.2%	-48.7%
Sociology	28	26	33	20	18	-10.0%	-35.7%
Biology	24	30	29	24	16	-33.3%	-33.3%
Communication	12	11	11	10	16	60.0%	33.3%
Political Science	7	3	3	5	8	60.0%	14.3%
Criminal Justice	6	7	9	6	7	16.7%	16.7%
Public Admin.	4	3	1	1	3	200.0%	-25.0%
Economics	17	13	6	8	2	-75.0%	-88.2%
Management Sci.	2	1	2	1	2	100.0%	0.0%
Art History	2	4	2	4	1	-75.0%	-50.0%
Computer Science	1	1	4	2	1	-50.0%	0.0%
Chemistry	1	1	0	2	1	-50.0%	0.0%
Marketing	1	0	1	1	1	0.0%	0.0%
Studio Art	1	0	1	0	1		0.0%
Biology-BS	2	4	0	0	1		-50.0%
Fine Arts	25	27	12	3	0		
Asian Studies	0	0	3	2	0		
Accounting	0	2	1	1	0		
Finance	4	4	2	1	0		
Earth Science - BS	0	0	0	1	0		
Sustainability Science	0	0	0	1	0		
Teacher of Stu with Disabilities	0	0	0	1	0		
Interior Design	0	1	0	1	0		
Philosophy and Religion	3	2	1	1	0		
Media Film	3	0	0	0	0		
Music	3	0	0	0	0		
Theatre	0	2	1	0	0		
Visual Comm	0	1	2	0	0		
Recreation Admin.	1	1	0	0	0		
Electronics Tech.	1	1	0	0	0		
Graphic Comm	0	0	1	0	0		
Second Majors Total	945	858	816	663	574	-13.4%	-39.3%

Course FTE by Department and Academic Level
College of Business and Public Management
(Union Campus)

	FALL 2009	FALL 2010	FALL 2011	FALL 2012	FALL 2013	1-YEAR CHANGE	5-YEAR CHANGE
COURSE FTE							
Accounting/Finance	377.1	435.8	428.7	405.3	355.1	-12.4%	-5.9%
ACCT (UG)	202.5	206.8	221.8	211.1	177.6	-15.9%	-12.3%
ACCT (GR)	49.0	45.3	35.3	22.3	26.5	19.1%	-45.9%
BLAW (UG)		58.3	69.6	59.4	56.8	-4.4%	
FIN (UG)	122.6	121.1	99.6	110.3	88.5	-19.7%	-27.8%
FIN (GR)	3.0	4.3	2.5	2.3	4.0	77.8%	33.3%
ID (UG)					1.7		
CrimJust/PubAdm	385.5	427.9	433.4	451.4	418.1	-7.4%	8.5%
CJ (UG)	206.2	236.9	229.4	247.8	209.4	-15.5%	1.5%
CJ (GR)	1.8	3.5	2.3	7.3	10.0	37.9%	471.4%
ID (UG)	2.4		3.9	3.8	3.6	-5.0%	46.2%
ID (GR)			2.0				
PA (UG)	88.1	97.7	96.6	94.1	98.4	4.6%	11.7%
PA (GR)	87.0	89.8	99.3	98.5	96.8	-1.8%	11.2%
Mgmt/Marketing	435.0	411.0	413.8	394.5	436.1	10.5%	0.2%
MGS (UG)	321.2	268.5	266.3	255.9	309.3	20.9%	-3.7%
MKT (UG)	113.8	142.5	147.6	138.6	126.8	-8.5%	11.4%
<i>BPM UG Total:</i>	<i>1,056.9</i>	<i>1,131.9</i>	<i>1,134.7</i>	<i>1,120.9</i>	<i>1,072.0</i>	<i>-4.4%</i>	<i>1.4%</i>
<i>BPM GR Total:</i>	<i>140.8</i>	<i>142.8</i>	<i>141.3</i>	<i>130.3</i>	<i>137.3</i>	<i>5.4%</i>	<i>-2.5%</i>
BPM Total:	1,197.6	1,274.6	1,275.9	1,251.2	1,209.3	-3.4%	1.0%

** Kean Ocean and Kean Wenzhou numbers are in separate pages, not included here.

Course FTE by Department and Academic Level
College of Education
(Union Campus)

	FALL 2009	FALL 2010	FALL 2011	FALL 2012	FALL 2013	1-YEAR CHANGE	5-YEAR CHANGE
COURSE FTE							
Comm Disorder/Deaf	210.4	247.9	273.3	229.2	245.7	7.2%	16.8%
CDD (UG)	97.8	124.3	151.3	140.4	139.3	-0.8%	42.4%
CDD (GR)	112.6	123.6	122.0	88.8	106.4	19.9%	-5.5%
CurriculumTeaching	614.8	587.7	533.4	485.6	401.1	-17.4%	-34.8%
EC (UG)	75.9	77.4	68.4	71.3	60.3	-15.4%	-20.6%
EC (GR)	22.8	21.0	16.4	12.5	12.8	2.7%	-43.8%
EDUC (UG)	51.2	49.7	51.6	43.7	37.9	-13.3%	-26.0%
EMSE (UG)	240.7	214.6	204.3	189.8	163.6	-13.8%	-32.0%
EMSE (GR)	141.0	120.0	99.0	86.5	55.5	-35.8%	-60.6%
ID (UG)	83.3	105.0	93.8	81.9	71.1	-13.3%	-14.6%
EDU Other					3.0		
EDUC (UG)					2.3		
EDUC (GR)					0.8		
Global Edu Innovation	155.8	154.7	146.4	111.6	89.8	-19.5%	-42.4%
CHIN (UG)	5.8	4.7	5.1	3.4	3.4	0.0%	-41.9%
FL (UG)	3.8	3.9	8.3				
FREN (UG)	5.4	9.0	9.0	5.8	7.3	25.8%	34.5%
GERM (UG)	1.1	3.0	2.3	2.3			
ITAL (UG)	4.3	8.1	6.4	5.3	3.8	-28.6%	-13.0%
PORT (UG)	6.6	8.1	7.5	8.6	2.4	-71.7%	-62.9%
SPAN (UG)	128.8	117.9	108.0	86.3	72.9	-15.4%	-43.4%
Phys Ed/Rec/Health	683.9	784.1	849.9	800.6	798.0	-0.3%	16.7%
GERO (UG)	0.2						
HED (UG)	211.7	251.4	263.8	256.5	247.3	-3.6%	16.8%
HED (GR)	4.0	3.5	3.5	3.3			
ID (UG)	173.3	210.4	238.3	189.4	182.3	-3.8%	5.2%
PED (UG)	226.1	242.6	250.3	265.6	255.3	-3.9%	12.9%
PED (GR)	9.0	6.8	9.8	12.0	15.5	29.2%	72.2%
REC (UG)	59.8	69.4	84.2	73.9	97.7	32.2%	63.5%
Special Edu/Literacy	486.4	524.8	467.9	419.8	406.8	-3.1%	-16.4%
CS (UG)	110.1	101.1	98.6	79.1	92.6	17.1%	-15.8%
CS (GR)	36.5	23.0	16.8	14.5	12.5	-13.8%	-65.8%
EDUC (UG)	46.3	41.6	45.9	45.8	41.1	-10.2%	-11.3%
ID (UG)	67.7	94.5	86.8	77.6	71.8	-7.5%	6.1%
SPED (UG)	65.9	84.6	77.8	79.8	84.3	5.7%	28.0%
SPED (GR)	160.0	180.0	142.0	123.0	104.5	-15.0%	-34.7%
<i>EDU UG Total:</i>	<i>1,665.5</i>	<i>1,821.3</i>	<i>1,861.5</i>	<i>1,706.3</i>	<i>1,636.4</i>	<i>-4.1%</i>	<i>-1.7%</i>
<i>EDU GR Total:</i>	<i>486.0</i>	<i>477.9</i>	<i>409.4</i>	<i>340.5</i>	<i>308.0</i>	<i>-9.6%</i>	<i>-36.6%</i>
EDU Total:	2,151.5	2,299.1	2,270.9	2,046.8	1,944.4	-5.0%	-9.6%

** Kean Ocean and Kean Wenzhou numbers are in separate pages, not included here.

Course FTE by Department and Academic Level
College of Humanities and Social Sciences
(Union Campus)

	FALL 2009	FALL 2010	FALL 2011	FALL 2012	FALL 2013	1-YEAR CHANGE	5-YEAR CHANGE
COURSE FTE							
Communication	449.8	524.6	629.6	591.4	568.0	-4.0%	26.3%
COMM (UG)	324.5	382.4	504.9	547.0	520.2	-4.9%	60.3%
COMM (GR)	9.5	19.0	15.8	12.8	20.3	58.8%	113.2%
FILM (UG)	39.6	51.6	31.1				
ID (UG)	12.9	9.4	22.7	31.7	27.6	-13.0%	113.0%
MED (UG)	63.3	62.3	55.1				
English	1,028.8	1,091.3	1,085.8	967.5	912.3	-5.7%	-11.3%
ENG (UG)	942.9	988.1	969.2	876.6	843.4	-3.8%	-10.6%
ENG (GR)	13.7	20.5	25.8	18.2	13.4	-26.1%	-1.8%
ESL (UG)	64.1	62.8	76.1	54.4	33.4	-38.6%	-48.0%
ID (UG)	8.1	19.9	14.6	18.4	22.1	20.4%	174.4%
Gen Studies	355.1	391.1	409.3	424.1	430.9	1.6%	21.3%
GE (UG)	206.8	238.9	250.1	239.6	231.8	-3.3%	12.1%
PHIL (UG)	128.4	126.2	138.9	158.3	159.4	0.7%	24.1%
REL (UG)	19.9	26.1	20.3	26.3	39.8	51.4%	100.0%
History	469.6	511.7	453.5	444.9	391.6	-12.0%	-16.6%
AS (UG)				4.9	5.6	15.4%	
HIST (UG)	446.1	486.2	426.0	402.0	359.6	-10.5%	-19.4%
ID (UG)	14.8	18.8	24.8	34.3	18.4	-46.4%	24.1%
MAHG (GR)	8.8	6.8	2.8	3.8	8.0	113.3%	-8.6%
Psychology	831.9	836.0	893.4	899.9	912.1	1.4%	9.6%
ID (GR)	5.8	5.5	6.5	6.8	6.5	-3.7%	13.0%
PSRT (UG)	12.0	16.9	19.5	31.5	30.6	-3.0%	154.7%
PSRT (GR)	0.5	0.3					
PSY (UG)	744.2	736.7	802.1	789.1	810.3	2.7%	8.9%
PSY (GR)	69.4	76.7	65.3	72.5	64.8	-10.7%	-6.7%
Social Sciences	760.2	791.3	783.8	675.6	597.4	-11.6%	-21.4%
ANTH (UG)	36.9	33.8	39.6	35.3	33.2	-5.9%	-10.2%
ECO (UG)	210.2	210.4	182.8	175.5	144.4	-17.7%	-31.3%
ECO (GR)	4.3	6.3		2.0	4.3	112.5%	0.0%
PS (UG)	152.1	162.0	192.2	139.5	145.3	4.2%	-4.4%
PS (GR)	5.0	8.5	6.3	4.5	0.5	-88.9%	-90.0%
SOC (UG)	337.5	354.4	345.2	295.9	257.1	-13.1%	-23.8%
SOC (GR)	14.3	16.0	17.8	23.0	12.8	-44.6%	-10.5%
Social Work	79.1	42.9					
SW (UG)	79.1	42.9					
<i>HSS UG Total:</i>	<i>3,843.4</i>	<i>4,029.5</i>	<i>4,115.3</i>	<i>3,860.1</i>	<i>3,681.9</i>	<i>-4.6%</i>	<i>-4.2%</i>
<i>HSS GR Total:</i>	<i>131.1</i>	<i>159.4</i>	<i>140.1</i>	<i>143.4</i>	<i>130.4</i>	<i>-9.1%</i>	<i>-0.5%</i>
HSS Total:	3,974.5	4,188.9	4,255.3	4,003.5	3,812.4	-4.8%	-4.1%

** Kean Ocean and Kean Wenzhou numbers are in separate pages, not included here.

Course FTE by Department and Academic Level
College of Natural, Applied, and Health Sciences
(Union Campus)

	FALL 2009	FALL 2010	FALL 2011	FALL 2012	FALL 2013	1-YEAR CHANGE	5-YEAR CHANGE
COURSE FTE							
Computer Science	273.3	297.3	290.0	254.5	249.8	-1.8%	-8.6%
CPS (UG)	203.1	226.3	214.6	181.4	172.3	-5.1%	-15.2%
CPS (GR)	2.5	2.8	4.4	6.4	15.5	141.6%	520.0%
ID (UG)	41.8	39.0	34.7	33.0	23.6	-28.4%	-43.5%
TECH (UG)	25.8	29.3	36.3	33.6	38.4	14.3%	48.9%
Env Sust Sci	1.5	3.4	14.0	38.7	49.0	26.7%	3166.7%
BIOS (UG)				18.5	24.0	29.7%	
SELS (UG)			3.5	0.8			
SUST (UG)	1.5	3.4	10.5	19.4	25.0	28.6%	1566.7%
Mathematics	652.3	753.4	732.7	708.4	681.8	-3.8%	4.5%
MATH (UG)	635.8	736.2	719.9	695.7	671.5	-3.5%	5.6%
MATH (GR)	16.5	17.3	12.8	12.8	10.3	-19.6%	-37.9%
Natural Sciences	790.4	853.3	884.8	879.8	850.8	-3.3%	7.6%
ASTR (UG)	28.0	34.8	27.3	27.0	37.8	39.8%	34.8%
BIO (UG)	400.1	419.4	430.9	444.5	433.8	-2.4%	8.4%
CHEM (UG)	146.3	161.6	175.1	180.1	184.8	2.6%	26.3%
CHEM (GR)		0.3	2.6	1.0			
ES (UG)	52.9	52.8	53.8	52.6	47.1	-10.5%	-11.0%
GEOG (UG)	34.3	33.2	33.2	33.6	33.9	1.1%	-1.1%
GEOL (UG)	35.3	33.8	45.3	35.3	35.3	0.0%	0.0%
GEOS (UG)				3.5			
ID (UG)	5.6	4.7	6.6	2.8	4.7	66.7%	-16.7%
METR (UG)	31.3	42.3	39.8	27.2	18.9	-30.6%	-39.6%
OCEN (UG)	10.8	10.0	11.3	9.0	4.0	-55.6%	-62.8%
PHYS (UG)	45.9	60.6	59.2	63.3	50.6	-20.0%	10.4%
Nursing	74.0	89.8	95.3	87.9	86.9	-1.1%	17.5%
NURS (UG)	46.5	60.2	68.3	68.9	71.3	3.4%	53.2%
NURS (GR)	27.5	29.6	27.0	19.0	15.7	-17.5%	-43.0%
<i>NAHS UG Total:</i>	<i>1,744.9</i>	<i>1,947.3</i>	<i>1,970.0</i>	<i>1,930.1</i>	<i>1,876.9</i>	<i>-2.8%</i>	<i>7.6%</i>
<i>NAHS GR Total:</i>	<i>46.5</i>	<i>49.9</i>	<i>46.7</i>	<i>39.2</i>	<i>41.4</i>	<i>5.7%</i>	<i>-10.9%</i>
NAHS Total:	1,791.4	1,997.2	2,016.7	1,969.2	1,918.3	-2.6%	7.1%

** Kean Ocean and Kean Wenzhou numbers are in separate pages, not included here.

Course FTE by Department and Academic Level
College of Visual and Performing Arts
(Union Campus)

	FALL 2009	FALL 2010	FALL 2011	FALL 2012	FALL 2013	1-YEAR CHANGE	5-YEAR CHANGE
COURSE FTE							
Design	193.3	210.4	225.0	243.9	260.1	6.6%	34.6%
DSN (UG)	30.9	41.8	62.6	47.1	64.1	36.3%	107.3%
GCOM (UG)	24.9	23.6	10.9	3.6	2.3	-36.8%	-91.0%
GCOM (GR)	9.5	7.0	5.3	5.0			
GD (UG)				88.9	100.5	13.1%	
ID (UG)	11.4	19.5	21.0	21.2	24.2	14.2%	111.5%
IND (UG)	19.1	19.9	21.9	23.4	21.4	-8.8%	11.8%
INTD (UG)	35.4	40.5	33.9	54.8	47.6	-13.0%	34.4%
VC (UG)	61.9	58.1	69.4				
Fine Arts	377.7	376.3	411.4	350.1	266.8	-23.8%	-29.4%
AH (UG)	108.8	109.3	115.1	114.0	72.8	-36.2%	-33.1%
AH (GR)	0.8		0.3				
FA (UG)	247.3	249.1	277.6	223.0	181.4	-18.6%	-26.6%
FA (GR)	21.0	17.8	18.4	13.1	12.6	-3.8%	-40.1%
Liberal Studies - MA	3.0	1.0	1.0	0.8			
MALS (GR)	3.0	1.0	1.0	0.8			
Music	160.3	161.8	206.6	165.6	119.2	-28.0%	-25.6%
MUS (UG)	160.3	161.8	206.6	165.6	119.2	-28.0%	-25.6%
Theatre	80.3	84.4	83.2	94.3	82.0	-13.1%	2.1%
DANC (UG)			5.8	6.4	6.1	-3.9%	
ID (UG)	0.8	0.8	2.8	2.9			
THE (UG)	79.5	83.6	74.5	85.1	75.9	-10.8%	-4.5%
<i>VPA UG Total:</i>	<i>780.4</i>	<i>808.0</i>	<i>902.3</i>	<i>835.8</i>	<i>715.5</i>	<i>-14.4%</i>	<i>-8.3%</i>
<i>VPA GR Total:</i>	<i>34.2</i>	<i>25.8</i>	<i>24.9</i>	<i>18.8</i>	<i>12.6</i>	<i>-33.2%</i>	<i>-63.3%</i>
VPA Total:	814.6	833.9	927.2	854.6	728.1	-14.8%	-10.6%

** Kean Ocean and Kean Wenzhou numbers are in separate pages, not included here.

Course FTE by Department and Academic Level
Nathan Weiss Graduate College
(Union Campus)

	FALL 2009	FALL 2010	FALL 2011	FALL 2012	FALL 2013	1-YEAR CHANGE	5-YEAR CHANGE
COURSE FTE							
Adv Stu Psyc	11.7	16.8	51.8	54.7	53.9	-1.5%	362.1%
PSYD (GR)	11.7	16.8	51.8	54.7	53.9	-1.5%	362.1%
Counselor Edu	113.8	139.5	143.5	138.8	135.3	-2.5%	18.9%
CED (GR)	113.8	139.5	143.5	138.8	135.3	-2.5%	18.9%
Edu Leadership	137.3	138.0	129.7	101.2	83.0	-18.0%	-39.5%
EDD (GR)	16.5	24.8	25.7	23.2	22.0	-5.0%	33.3%
EL (GR)	120.8	113.3	104.0	78.0	61.0	-21.8%	-49.5%
Grad Mgmt Studies	71.0	64.5	49.3	41.0	42.3	3.0%	-40.5%
GMBA (GR)	45.3	47.3	35.0	26.5	30.3	14.2%	-33.1%
MGS (GR)	18.0	12.8	7.8	10.3	7.3	-29.3%	-59.7%
MIS (GR)	1.8						
MKT (GR)	6.0	4.5	6.5	4.3	4.8	11.8%	-20.8%
NWGC Other	19.8	21.5	17.8	14.3	22.8	59.6%	15.2%
ID (GR)	19.8	21.5	17.8	14.3	22.8	59.6%	15.2%
Occupational Therapy - GR	79.8	76.9	91.0	90.7	94.5	4.2%	18.5%
OT (UG)	10.6	3.7	12.5	11.8	8.4	-29.1%	-20.7%
OT (GR)	69.3	73.2	78.5	78.9	86.2	9.2%	24.4%
Social Work - Graduate	130.8	134.6	150.5	120.6	105.5	-12.5%	-19.3%
SW (GR)	130.8	134.6	150.5	120.6	105.5	-12.5%	-19.3%
<i>NWGC UG Total:</i>	<i>10.6</i>	<i>3.7</i>	<i>12.5</i>	<i>11.8</i>	<i>8.4</i>	<i>-29.1%</i>	<i>-20.7%</i>
<i>NWGC GR Total:</i>	<i>553.4</i>	<i>588.1</i>	<i>621.0</i>	<i>549.4</i>	<i>528.8</i>	<i>-3.7%</i>	<i>-4.4%</i>
NWGC Total:	564.0	591.8	633.5	561.2	537.2	-4.3%	-4.7%

** Kean Ocean and Kean Wenzhou numbers are in separate pages, not included here.

Enrollment

Course FTE by Department and Academic Level New Jersey Center *for* Science, Technology *and* Mathematics (Union Campus)

	FALL 2009	FALL 2010	FALL 2011	FALL 2012	FALL 2013	1-YEAR CHANGE	5-YEAR CHANGE
COURSE FTE							
NJCSTM	52.2	57.8	71.9	78.6	77.3	-1.7%	48.1%
BIO (GR)	7.0	10.9	17.7	13.7	11.3	-17.1%	61.9%
ID (UG)	0.3						
STE (GR)	3.5		4.0				
STME (UG)	26.6	28.8	36.4	46.4	39.1	-15.8%	47.1%
STME (GR)	14.8	18.2	13.8	18.6	26.9	44.8%	81.5%
<i>NJSTM UG Total:</i>	<i>26.9</i>	<i>28.8</i>	<i>36.4</i>	<i>46.4</i>	<i>39.1</i>	<i>-15.8%</i>	<i>45.3%</i>
<i>NJSTM GR Total:</i>	<i>25.3</i>	<i>29.1</i>	<i>35.5</i>	<i>32.2</i>	<i>38.3</i>	<i>18.6%</i>	<i>51.0%</i>
NJSTM Total:	52.2	57.8	71.9	78.6	77.3	-1.7%	48.1%

** Kean Ocean and Kean Wenzhou numbers are in separate pages, not included here.

Course FTE by Department and Academic Level Kean Ocean

	FALL 2009	FALL 2010	FALL 2011	FALL 2012	FALL 2013	1-YEAR CHANGE	5-YEAR CHANGE
COURSE FTE							
BPM	156.4	150.7	143.4	154.8	136.3	-11.9%	-12.8%
ACCT (UG)	25.5	30.0	30.2	21.4	20.6	-3.5%	-19.1%
BLAW (UG)		2.1	4.3	3.6	2.4	-31.6%	
CJ (UG)	26.6	38.6	34.5	32.8	21.4	-34.9%	-19.7%
FIN (UG)	18.6	13.3	16.9	21.4	13.9	-35.1%	-25.3%
MGS (UG)	60.2	29.3	26.8	40.6	42.8	5.2%	-29.0%
MKT (UG)	22.7	24.6	17.4	21.2	19.7	-7.1%	-13.2%
PA (UG)	2.8	8.6	11.3	12.4	15.6	25.8%	453.3%
PA (GR)		4.3	2.0	1.5			
EDU	170.3	242.8	228.9	242.2	134.9	-44.3%	-20.8%
EDUC (UG)	18.6	23.3	22.1	20.6	15.0	-27.3%	-19.2%
EMSE (UG)	24.1	54.1	38.8	39.6	20.6	-48.0%	-14.8%
HED (UG)	20.6	37.1	43.1	47.1	38.3	-18.7%	85.5%
ID (UG)	33.6	41.3	32.1	35.4	19.5	-45.0%	-41.9%
PED (UG)	60.9	66.6	59.1	52.9	24.1	-54.5%	-60.5%
REC (UG)	1.9	3.4	9.2	8.3	3.8	-54.5%	100.0%
SPED (UG)	10.7	17.1	24.6	38.4	13.8	-64.2%	28.7%
HSS	204.8	268.3	307.0	305.3	266.7	-12.7%	30.2%
COMM (UG)	6.0	16.5	15.4	22.5	18.0	-20.0%	200.0%
ECO (UG)	11.3						
ENG (UG)	40.9	57.4	60.8	60.8	44.6	-26.5%	9.2%
FILM (UG)	2.3	1.3					
HIST (UG)	66.6	81.4	87.6	58.1	49.5	-14.8%	-25.6%
MED (UG)	0.2						
PHIL (UG)	6.4	19.3	17.3	19.7	19.9	1.0%	211.8%
PSY (UG)	25.9	41.1	76.6	96.8	107.5	11.0%	315.5%
PSY (GR)	1.8						
SOC (UG)	43.7	51.4	49.5	47.4	27.2	-42.7%	-37.8%
NAHS	65.3	73.6	96.8	117.0	116.0	-0.9%	77.5%
BIO (UG)	9.9	13.9	21.4	21.9	12.4	-43.6%	24.5%
CPS (UG)		1.1	0.2				
NURS (UG)	38.6	47.1	57.9	71.6	57.5	-19.7%	48.9%
NURS (GR)	16.8	11.4	17.3	23.4	46.1	96.8%	175.1%
NWGC	26.8	29.3	27.5	28.8	22.3	-22.8%	-16.8%
CED (GR)	8.8	14.8	14.0	14.8	12.8	-13.6%	45.7%
EL (GR)	18.0	14.5	9.5	8.3	4.5	-45.5%	-75.0%
SW (GR)			4.0	5.8	5.0	-14.3%	
VPA	5.6	6.8	12.0	11.2	14.2	26.8%	152.2%
AH (UG)		0.8	1.1	2.8			
DSN (UG)			1.1				
GCOM (UG)	2.4						
GD (UG)				7.3	13.1	79.5%	
MUS (UG)				1.1	1.1	0.0%	
VC (UG)	3.2	6.0	9.8				
<i>Kean Ocean UG Total:</i>	<i>583.9</i>	<i>726.4</i>	<i>768.8</i>	<i>805.6</i>	<i>621.9</i>	<i>-22.8%</i>	<i>6.5%</i>
<i>Kean Ocean GR Total:</i>	<i>45.3</i>	<i>44.9</i>	<i>46.8</i>	<i>53.8</i>	<i>68.3</i>	<i>27.1%</i>	<i>51.0%</i>
Kean Ocean Total:	629.2	771.4	815.6	859.3	690.3	-19.7%	9.7%

Course FTE by Department and Academic Level Kean Wenzhou

	FALL 2009	FALL 2010	FALL 2011	FALL 2012	FALL 2013	1-YEAR CHANGE	5-YEAR CHANGE
COURSE FTE							
Kean Wenzhou				206.3	434.2	110.5%	
ACCT (UG)					22.3		
COMM (UG)					21.0		
CPS (UG)				39.8	38.2	-3.9%	
ECO (UG)					22.3		
ENG (UG)				76.9	133.3	73.4%	
ESL (UG)				76.9	88.5	15.1%	
FA (UG)					15.9		
GE (UG)				12.8	26.4	106.3%	
MATH (UG)					43.3		
MGS (UG)					22.9		
<i>Kean Wenzhou UG Total:</i>				<i>206.3</i>	<i>434.2</i>	<i>110.5%</i>	
Kean Wenzhou Total:				206.3	434.2	110.5%	



Kean University - Degree Conferred



Degrees Conferred

Page 30	At-a-Glance
Page 32	Degrees Conferred by Department and Program
	<ul style="list-style-type: none">- College of Business and Public Management- College of Education- College of Humanities and Social Sciences- College of Natural, Applied, and Health Sciences- College of Visual and Performing Arts- Nathan Weiss Graduate College- NJ Center For Science, Technology & Mathematics

Degrees Conferred, Fiscal Year 2012 - 2013 (All Campuses)

	TOTAL		BACHELOR		MASTER		POSTM DIPLOMA		DOCTOR	
	No.	%	No.	%	No.	%	No.	%	No.	%
DEGREE LEVEL										
Undergraduate	2,705	80.2%	2,705	100.0%						
Graduate	666	19.8%			641	100.0%	21	100.0%	4	100.0%
GENDER										
Male	1,139	33.8%	978	36.2%	157	24.5%	2	9.5%	2	50.0%
Female	2,232	66.2%	1,727	63.8%	484	75.5%	19	90.5%	2	50.0%
RACE / ETHNICITY										
Black	594	17.6%	453	16.7%	137	21.4%	2	9.5%	2	50.0%
Hispanic	636	18.9%	550	20.3%	81	12.6%	5	23.8%		
Asian	246	7.3%	203	7.5%	43	6.7%				
White	1,720	51.0%	1,333	49.3%	371	57.9%	14	66.7%	2	50.0%
MultiRace	21	0.6%	18	0.7%	3	0.5%				
Not Reported	154	4.6%	148	5.5%	6	0.9%				
COLLEGE										
BPM	778	23.1%	710	26.2%	68	10.6%				
EDU	732	21.7%	531	19.6%	201	31.4%				
HSS	981	29.1%	911	33.7%	62	9.7%	8	38.1%		
NAHS	432	12.8%	386	14.3%	46	7.2%				
NWGC	232	6.9%	0	0.0%	215	33.5%	13	61.9%	4	100.0%
VPA	170	5.0%	147	5.4%	23	3.6%				
NJSTM	46	1.4%	20	0.7%	26	4.1%				

* Fiscal Year includes degrees conferred between July 1 and June 30.

Top 10 Bachelor's Degrees Conferred

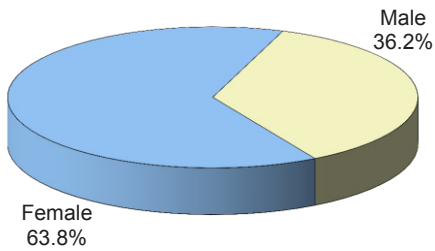
Psychology	387
Management Science	227
Criminal Justice	162
Accounting	151
Elementary Education	135
English	134
Physical Education	118
Educator of Individuals with Disabilities	116
History	116
Communication	113

Top 10 Master's Degrees Conferred

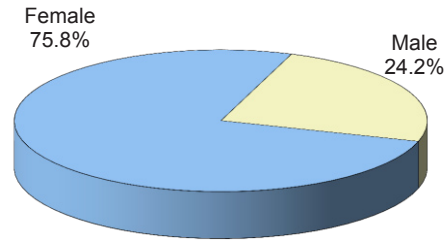
Counselor Education	64
Speech Language Pathology	64
Special Education	59
Social Work	50
Educational Administration	49
Public Administration	48
Instruction & Curriculum	42
Nursing	35
Occupational Therapy	27
Psychology, General	24

Additional information is available online at <http://ir.kean.edu>.

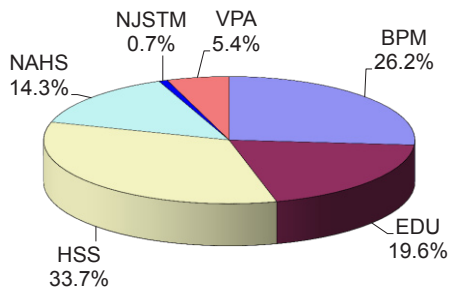
**BACHELOR'S DEGREES
By Gender**



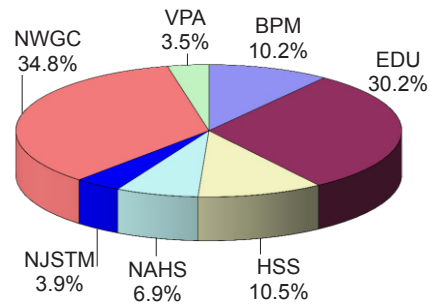
**GRADUATE DEGREES
(Master, Diploma, Doctor)
By Gender**



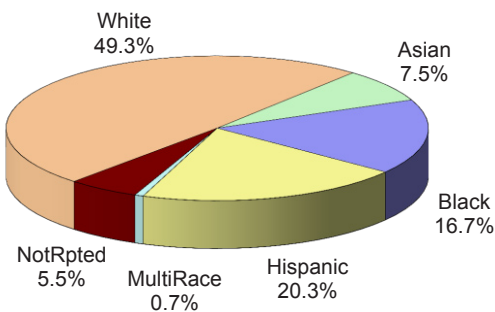
**BACHELOR'S DEGREES
By College**



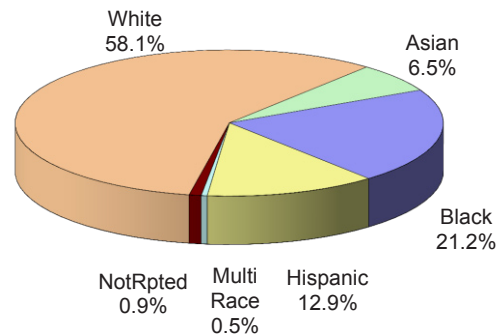
**GRADUATE DEGREES
(Master, Diploma, Doctor)
By College**



**BACHELOR'S DEGREES
By Race/Ethnicity**



**GRADUATE DEGREES
(Master, Diploma, Doctor)
By Race/Ethnicity**



Degrees Conferred by Department and Program
College of Business and Public Management
(All Campuses)

	FISCAL YR 2008-09	FISCAL YR 2009-10	FISCAL YR 2010-11	FISCAL YR 2011-12	FISCAL YR 2012-13	1-YEAR CHANGE	5-YEAR CHANGE
DEGREES CONFERRED							
Accounting/Finance							
Accounting (UG)	129	145	164	145	151	4.1%	17.1%
Accounting (GR)	32	45	44	34	20	-41.2%	-37.5%
Finance (UG)	53	60	71	55	54	-1.8%	1.9%
Accounting/Finance Total:	214	250	279	234	225	-3.8%	5.1%
CrimJust/PubAdm							
Criminal Justice (UG)	133	127	132	152	162	6.6%	21.8%
Public Admin. (UG)	30	36	21	36	46	27.8%	53.3%
Public Admin. (GR)	53	43	41	44	48	9.1%	-9.4%
CrimJust/PubAdm Total:	216	206	194	232	256	10.3%	18.5%
Mgmt/Marketing							
Management Sci. (UG)	200	250	229	207	227	9.7%	13.5%
Marketing (UG)	84	83	100	94	70	-25.5%	-16.7%
Mgmt/Marketing Total:	284	333	329	301	297	-1.3%	4.6%
<i>BPM UG Total:</i>	<i>629</i>	<i>701</i>	<i>717</i>	<i>689</i>	<i>710</i>	<i>3.0%</i>	<i>12.9%</i>
<i>BPM GR Total:</i>	<i>85</i>	<i>88</i>	<i>85</i>	<i>78</i>	<i>68</i>	<i>-12.8%</i>	<i>-20.0%</i>
BPM Total:	714	789	802	767	778	1.4%	9.0%

Degrees Conferred by Department and Program College of Education (All Campuses)

Degrees Conferred

	FISCAL YR 2008-09	FISCAL YR 2009-10	FISCAL YR 2010-11	FISCAL YR 2011-12	FISCAL YR 2012-13	1-YEAR CHANGE	5-YEAR CHANGE
DEGREES CONFERRED							
Comm Disorder/Deaf							
Speech Lang. Pathology (GR)	42	40	42	45	64	42.2%	52.4%
Speech, Lang Hear. Sci. (UG)	33	51	45	50	43	-14.0%	30.3%
Comm Disorder/Deaf Total:	75	91	87	95	107	12.6%	42.7%
Curriculum Teaching							
Early Childhood Edu. (UG)	107	74	71	63	55	-12.7%	-48.6%
Early Childhood Edu. (GR)	25	15	11	15	15	0.0%	-40.0%
Elem/Mid/Sec Edu (UG)	106	178	136	130	135	3.8%	27.4%
Instruction & Curriculum (GR)	58	72	80	51	42	-17.6%	-27.6%
Curriculum Teaching Total:	296	339	298	259	247	-4.6%	-16.6%
Global Edu Innovation							
Spanish (UG)	52	41	55	29	23	-20.7%	-55.8%
Global Edu Innovation Total:	52	41	55	29	23	-20.7%	-55.8%
Phys Ed/Rec/Health							
Athletic Training (UG)	7	6	6	7	11	57.1%	57.1%
Exercise Science (GR)	1	6	1	2	9	350.0%	800.0%
Physical Edu (UG)	73	89	116	112	118	5.4%	61.6%
Recreation Admin. (UG)	27	23	21	36	30	-16.7%	11.1%
Phys Ed/Rec/Health Total:	108	124	144	157	168	7.0%	55.6%
Special Edu/Literacy							
Edu/Media/Spec. (GR)	8	9	4	3	0	*	*
Reading Spec. (GR)	28	17	21	14	12	-14.3%	-57.1%
Special Edu (GR)	50	60	49	51	59	15.7%	18.0%
Teacher of Stu with Disabilities (UG)	50	66	106	104	116	11.5%	132.0%
Special Edu/Literacy Total:	136	152	180	172	187	8.7%	37.5%
EDU UG Total:	455	528	556	531	531	0.0%	16.7%
EDU GR Total:	212	219	208	181	201	11.0%	-5.2%
EDU Total:	667	747	764	712	732	2.8%	9.7%

* Phasing-Out program

Degrees Conferred by Department and Program
College of Humanities and Social Sciences
(All Campuses)

	FISCAL YR 2008-09	FISCAL YR 2009-10	FISCAL YR 2010-11	FISCAL YR 2011-12	FISCAL YR 2012-13	1-YEAR CHANGE	5-YEAR CHANGE
DEGREES CONFERRED							
Communication							
Communication (UG)	51	51	64	93	113	21.5%	121.6%
Communication Studies (GR)	9	8	10	8	8	0.0%	-11.1%
Media Film (UG)	20	41	43	34	13	-61.8%	-35.0%
Communication Total:	80	100	117	135	134	-0.7%	67.5%
English							
English (UG)	86	89	104	131	134	2.3%	55.8%
English Writing (GR)	0	0	2	2	4	100.0%	
English Total:	86	89	106	133	138	3.8%	60.5%
Gen Studies							
Philosophy and Religion (UG)	0	0	3	2	0	*	*
Gen Studies Total:	0	0	3	2	0	-100.0%	
History							
History (UG)	79	84	102	98	116	18.4%	46.8%
Holocaust & Genocide (GR)	3	3	4	2	5	150.0%	66.7%
History Total:	82	87	106	100	121	21.0%	47.6%
Psychology							
Behavioral Sci (GR)	16	9	4	6	2	*	*
Edu Psych (GR)	11	10	18	33	1	*	*
Marri & Fam Therapy (GR)	9	4	5	2	13	550.0%	44.4%
Psych Rehab (UG)	8	13	10	15	17	13.3%	112.5%
Psychology (UG)	206	229	284	342	387	13.2%	87.9%
Psychology (GR)	0	14	14	18	24	33.3%	
Psychology Total:	250	279	335	416	444	6.7%	77.6%
Social Sciences							
Economics (UG)	21	30	13	19	14	-26.3%	-33.3%
Political Science (UG)	30	34	39	22	26	18.2%	-13.3%
Political Science (GR)	8	4	1	11	3	-72.7%	-62.5%
Soc/SocJust (GR)	0	0	7	6	10	66.7%	
Sociology (UG)	65	80	90	82	91	11.0%	40.0%
Social Sciences Total:	124	148	150	140	144	2.9%	16.1%
Social Work							
Social Work (UG)	51	55	61	4	0	*	*
Social Work Total:	51	55	61	4	0	-100.0%	-100.0%
<i>HSS UG Total:</i>	<i>617</i>	<i>706</i>	<i>813</i>	<i>842</i>	<i>911</i>	<i>8.2%</i>	<i>47.6%</i>
<i>HSS GR Total:</i>	<i>56</i>	<i>52</i>	<i>65</i>	<i>88</i>	<i>70</i>	<i>-20.5%</i>	<i>25.0%</i>
HSS Total:	673	758	878	930	981	5.5%	45.8%

* Phasing-Out program

Degrees Conferred by Department and Program College of Natural, Applied, and Health Sciences (All Campuses)

Degrees Conferred

	FISCAL YR 2008-09	FISCAL YR 2009-10	FISCAL YR 2010-11	FISCAL YR 2011-12	FISCAL YR 2012-13	1-YEAR CHANGE	5-YEAR CHANGE
DEGREES CONFERRED							
Computer Science							
Computer Info. Systems (GR)	0	0	0	2	3	50.0%	
Computer Science (UG)	18	16	14	27	33	22.2%	83.3%
Comp.Integrated Design & Mfg. Tech. (UG)	2	3	0	0	0	*	*
Electronics Tech. (UG)	1	0	1	1	0	*	*
Information Technology (UG)	5	3	2	9	14	55.6%	180.0%
Computer Science Total:	26	22	17	39	50	28.2%	108.3%
Env Sust Sci							
Biology-BS (UG)	42	43	30	47	50	6.4%	19.0%
Earth Science - BS (UG)	7	6	8	8	6	-25.0%	-14.3%
Env Sust Sci Total:	49	49	38	55	56	1.8%	14.3%
Mathematics							
Comp/Stat/Math. (GR)	1	2	2	2	2	*	*
Math. Edu. (GR)	2	5	2	4	4	0.0%	100.0%
Math. Science (UG)	42	43	50	53	58	9.4%	38.1%
Mathematics Total:	45	50	54	59	64	8.5%	42.2%
Natural Sciences							
Biology (UG)	32	52	48	65	94	44.6%	193.8%
Chemistry (UG)	14	15	12	4	13	225.0%	-7.1%
Earth Science (UG)	2	7	5	10	9	-10.0%	350.0%
HIM (UG)	8	10	9	7	5	-28.6%	-37.5%
Medical Tech. (UG)	2	10	7	8	10	25.0%	400.0%
Natural Sciences Total:	58	94	81	94	131	39.4%	125.9%
Nursing							
M.S.N./M.P.A. in Nursing (GR)	3	0	0	2	2	*	*
Nursing (UG)	69	72	94	110	94	-14.5%	36.2%
Nursing (GR)	26	42	36	37	35	-5.4%	34.6%
Nursing Total:	98	114	130	149	131	-12.1%	33.7%
<i>NAHS UG Total:</i>	<i>242</i>	<i>277</i>	<i>280</i>	<i>349</i>	<i>386</i>	<i>10.6%</i>	<i>59.5%</i>
<i>NAHS GR Total:</i>	<i>32</i>	<i>49</i>	<i>40</i>	<i>47</i>	<i>46</i>	<i>-2.1%</i>	<i>43.8%</i>
NAHS Total:	276	329	320	396	432	9.1%	57.7%

* Phasing-Out program

Degrees Conferred by Department and Program
College of Visual and Performing Arts
(All Campuses)

	FISCAL YR 2008-09	FISCAL YR 2009-10	FISCAL YR 2010-11	FISCAL YR 2011-12	FISCAL YR 2012-13	1-YEAR CHANGE	5-YEAR CHANGE
DEGREES CONFERRED							
Design							
Graphic Comm (UG)	11	10	11	9	7	*	*
Graphic Comm (GR)	10	11	4	3	5	*	*
Industrial Design (UG)	3	3	9	14	14	0.0%	366.7%
Interior Design (UG)	25	25	35	31	36	16.1%	44.0%
Visual Comm (UG)	25	27	23	36	29	-19.4%	16.0%
Design Total:	74	76	82	93	91	-2.2%	23.0%
Fine Arts							
Art History (UG)	3	7	3	4	4	0.0%	33.3%
Fine Arts (UG)	22	22	24	11	21	90.9%	-4.5%
Fine Arts Edu (GR)	19	14	15	11	14	27.3%	-26.3%
Studio Art (UG)	9	8	8	6	11	83.3%	22.2%
Fine Arts Total:	53	51	50	32	50	56.3%	-5.7%
Liberal Studies - MA							
Liberal Studies (GR)	6	6	5	2	4	100.0%	-33.3%
Liberal Studies - MA Total:	6	6	5	2	4	100.0%	-33.3%
Music							
Music (UG)	6	11	4	3	3	0.0%	-50.0%
Music Edu. (UG)	2	2	1	1	11	1000.0%	450.0%
Music Total:	8	13	5	4	14	250.0%	75.0%
Theatre							
Theatre (UG)	9	11	11	16	7	-56.3%	-22.2%
Theatre Design & Tech. (UG)	1	2	1	2	0	-100.0%	-100.0%
Theatre Performance (UG)	4	5	2	4	4	0.0%	0.0%
Theatre Total:	14	18	14	22	11	-50.0%	-21.4%
<i>VPA UG Total:</i>	<i>120</i>	<i>133</i>	<i>132</i>	<i>137</i>	<i>147</i>	<i>7.3%</i>	<i>22.5%</i>
<i>VPA GR Total:</i>	<i>35</i>	<i>31</i>	<i>24</i>	<i>16</i>	<i>23</i>	<i>43.8%</i>	<i>-34.3%</i>
VPA Total:	155	164	156	153	170	11.1%	9.7%

* Phasing-Out program

Degrees Conferred by Department and Program Nathan Weiss Graduate College (All Campuses)

Degrees Conferred

	FISCAL YR 2008-09	FISCAL YR 2009-10	FISCAL YR 2010-11	FISCAL YR 2011-12	FISCAL YR 2012-13	1-YEAR CHANGE	5-YEAR CHANGE
DEGREES CONFERRED							
Adv Stu Psyc							
School Psychology (GR)	10	10	9	19	21	10.5%	110.0%
Adv Stu Psyc Total:	10	10	9	19	21	10.5%	110.0%
Counselor Edu							
Counselor Edu (GR)	56	46	64	85	64	-24.7%	14.3%
Counselor Edu Total:	56	46	64	85	64	-24.7%	14.3%
Edu Leadership							
EdD.Urban/Leader (GR_D)	0	0	0	8	4	-50.0%	
Edu Admin. (GR)	89	84	70	68	49	-27.9%	-44.9%
Edu Leadership Total:	89	84	70	76	53	-30.3%	-40.4%
Grad Mgmt Studies							
MBA in Global Management (GR)	52	31	34	38	17	-55.3%	-67.3%
MIS (GR)	2	4	3	0	0	*	*
Grad Mgmt Studies Total:	54	35	37	38	17	-55.3%	-68.5%
Occupational Therapy - GR							
Occupational Therapy (GR)	29	29	31	28	27	-3.6%	-6.9%
Occupational Therapy - GR Total:	29	29	31	28	27	-3.6%	-6.9%
Social Work - Graduate							
Social Work (GR)	42	53	54	57	50	-12.3%	19.0%
Social Work - Graduate Total:	42	53	54	57	50	-12.3%	19.0%
<i>NWGC GR_D Total:</i>	<i>0</i>	<i>0</i>	<i>0</i>	<i>8</i>	<i>4</i>	<i>-50.0%</i>	
<i>NWGC GR Total:</i>	<i>280</i>	<i>257</i>	<i>265</i>	<i>295</i>	<i>228</i>	<i>-22.7%</i>	<i>-18.6%</i>
NWGC Total:	280	257	265	303	232	-23.4%	-17.1%

* Phasing-Out program

Degrees Conferred by Department and Program
New Jersey Center *for* Science, Technology *and* Mathematics
(All Campuses)

	FISCAL YR 2008-09	FISCAL YR 2009-10	FISCAL YR 2010-11	FISCAL YR 2011-12	FISCAL YR 2012-13	1-YEAR CHANGE	5-YEAR CHANGE
DEGREES CONFERRED							
NJCSTM							
Biotechnology (GR)	8	14	5	14	13	-7.1%	62.5%
Instr Curr Sci Tech (GR)	0	0	0	17	11	-35.3%	
Science & Tech. (UG)	17	26	21	21	20	-4.8%	17.6%
Science & Tech. (GR)	4	3	6	5	2	-60.0%	-50.0%
NJCSTM Total:	29	43	32	57	46	-19.3%	58.6%
<i>NJSTM UG Total:</i>	<i>17</i>	<i>26</i>	<i>21</i>	<i>21</i>	<i>20</i>	<i>-4.8%</i>	<i>17.6%</i>
<i>NJSTM GR Total:</i>	<i>12</i>	<i>17</i>	<i>11</i>	<i>36</i>	<i>26</i>	<i>-27.8%</i>	<i>116.7%</i>
NJSTM Total:	29	43	32	57	46	-19.3%	58.6%



Kean University - Employees



Employees

Page 40

At-a-Glance

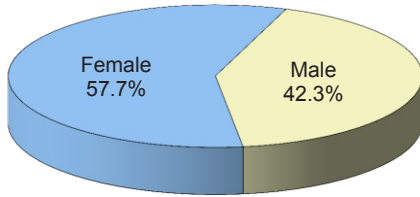
Fall 2013 Employee Demographics (All Campuses)

	TOTAL		FACULTY		STAFF	
	TOTAL	%	#	%	#	%
TOTAL FULL-TIME	1,073	100.0%	372	100.0%	701	100.0%
GENDER						
Male	454	42.3%	180	48.4%	274	39.1%
Female	619	57.7%	192	51.6%	427	60.9%
RACE / ETHNICITY						
Black	199	18.5%	30	8.1%	169	24.1%
Hispanic	171	15.9%	23	6.2%	148	21.1%
Asian	102	9.5%	53	14.2%	49	7.0%
White	597	55.6%	266	71.5%	331	47.2%
Multi-race	2	0.2%			2	0.3%
Not Reported	2	0.2%			2	0.3%
EMPLOYEE GROUP						
Faculty	372	34.7%	372	100.0%		
Administrative & Managerial	178	16.6%			178	25.4%
Professional & Support	370	34.5%			370	52.8%
Services	153	14.3%			153	21.8%
AGE						
< 30	58	5.4%	1	0.3%	57	8.1%
30 - 39	204	19.0%	56	15.1%	148	21.1%
40 - 49	251	23.4%	73	19.6%	178	25.4%
50 - 59	265	24.7%	90	24.2%	175	25.0%
60 - 69	240	22.4%	108	29.0%	132	18.8%
70 +	55	5.1%	44	11.8%	11	1.6%
Average Age	50	-	55	-	47	-
PART TIME EMPLOYEES	39	-	21	-	18	-
ADJUNCT FACULTY	971	-	971	-		

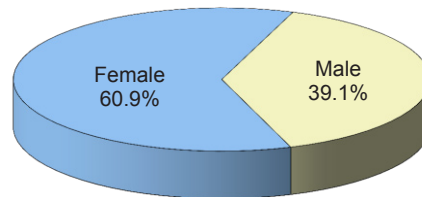
* Numbers represent full-time faculty and staff only, unless otherwise noted.

Additional information is available online at <http://ir.kean.edu>.

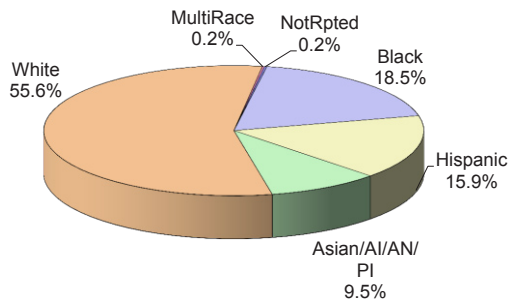
**FULL-TIME EMPLOYEES
By Gender**



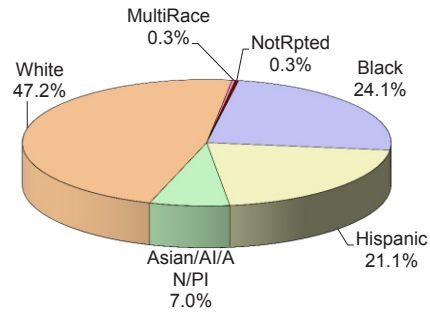
**FULL-TIME STAFF
By Gender**



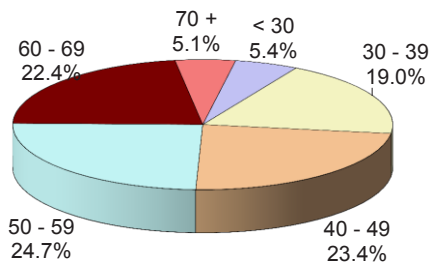
**FULL-TIME EMPLOYEES
By Race/Ethnicity**



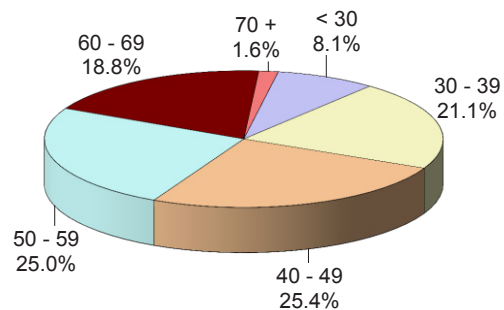
**FULL-TIME STAFF
By Race/Ethnicity**



**FULL-TIME EMPLOYEES
By Age Group**



**FULL-TIME STAFF
By Age Group**



The charts for full-time faculty are located in the “Faculty” section.



Kean University – Faculty

Faculty

Page 44	At-a-Glance
Page 46	Faculty Trends
Page 48	Full-Time Faculty by Department <ul style="list-style-type: none">- College of Business <i>and</i> Public Management- College of Education- College of Humanities <i>and</i> Social Sciences- College of Natural, Applied, <i>and</i> Health Sciences- College of Visual <i>and</i> Performing Arts- Nathan Weiss Graduate College- NJ Center For Science, Technology & Mathematics- Kean Ocean- Kean Wenzhou
Page 56	Distribution of Full-Time Faculty by Age



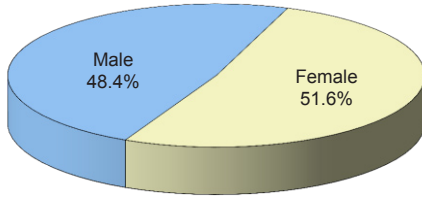
Fall 2013 Faculty Demographics

	UNIVERSITY		UNION		LOCATION		WENZHOU	
	TOTAL	%			OCEAN			
TOTAL FULL-TIME	372	100.0%	335	100.0%	13	100.0%	24	100.0%
GENDER								
Male	180	48.4%	160	47.8%	6	46.2%	14	58.3%
Female	192	51.6%	175	52.2%	7	53.8%	10	41.7%
RACE / ETHNICITY								
Black	30	8.1%	28	8.4%	0	0.0%	2	8.3%
Hispanic	23	6.2%	21	6.3%	0	0.0%	2	8.3%
Asian	53	14.2%	43	12.8%	2	15.4%	8	33.3%
White	266	71.5%	243	72.5%	11	84.6%	12	50.0%
TENURE STATUS								
Tenured	250	67.2%	248	74.0%	0	0.0%	2	8.3%
Tenure Track	70	18.8%	50	14.9%	7	53.8%	13	54.2%
Not on Tenure Track	52	14.0%	37	11.0%	6	46.2%	9	37.5%
RANK								
Professor	103	27.7%	101	30.1%	0	0.0%	2	8.3%
Associate Professor	82	22.0%	81	24.2%	0	0.0%	1	4.2%
Assistant Professor	139	37.4%	118	35.2%	9	69.2%	12	50.0%
Lecturer	48	12.9%	35	10.4%	4	30.8%	9	37.5%
EDUCATION								
Highest Degree								
Doctorate	298	80.1%	273	81.5%	9	69.2%	16	66.7%
Master's	72	19.4%	62	18.5%	4	30.8%	6	25.0%
Terminal Degree in Field	320	86.0%	294	87.8%	9	69.2%	17	70.8%
AGE								
Average Age	55	-	55	-	51	-	43	-
Faculty >= 60	152	40.9%	145	43.3%	3	23.1%	4	16.7%
COLLEGE								
BPM	46	12.4%	42	12.5%	2	15.4%	2	8.3%
EDU	63	16.9%	61	18.2%	2	15.4%	0	0.0%
HSS	113	30.4%	93	27.8%	3	23.1%	17	70.8%
NAHS	72	19.4%	63	18.8%	5	38.5%	4	16.7%
VPA	37	9.9%	36	10.7%	0	0.0%	1	4.2%
NWGC	35	9.4%	34	10.1%	1	7.7%	0	0.0%
NJSTM	6	1.6%	6	1.8%	0	0.0%	0	0.0%
PART-TIME FACULTY	21	-	21	-	0	-	0	-
ADJUNCT FACULTY	971	-	931	-	40	-	0	-

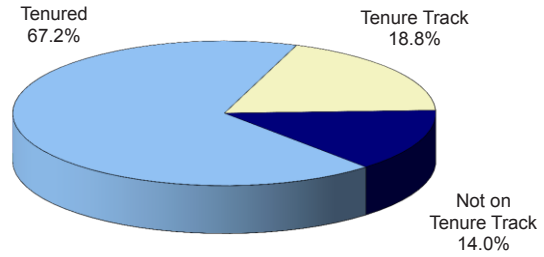
* Numbers represent full-time faculty only, unless otherwise noted.

Additional information is available online at <http://ir.kean.edu>.

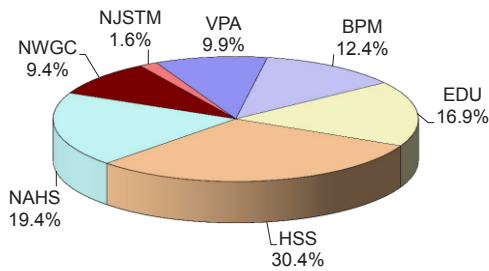
**FULL-TIME FACULTY
By Gender**



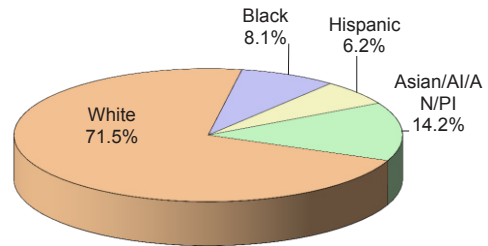
**FULL-TIME FACULTY
By Tenure Status**



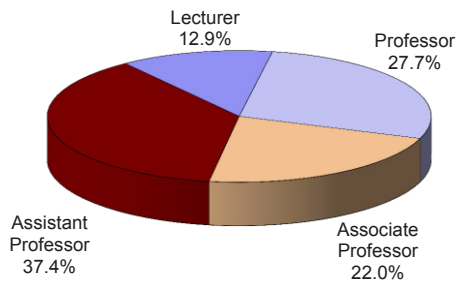
**FULL-TIME FACULTY
By College**



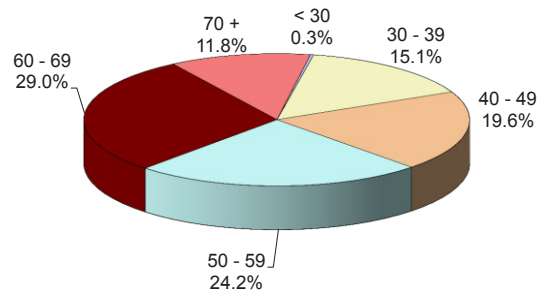
**FULL-TIME FACULTY
By Race/Ethnicity**



**FULL-TIME FACULTY
By Rank**



**FULL-TIME FACULTY
By Age Group**

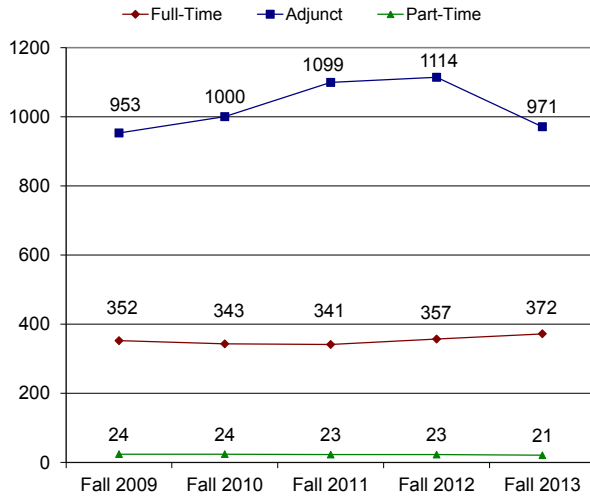


Faculty Trends, Fall 2009 - Fall 2013 (All Campuses)

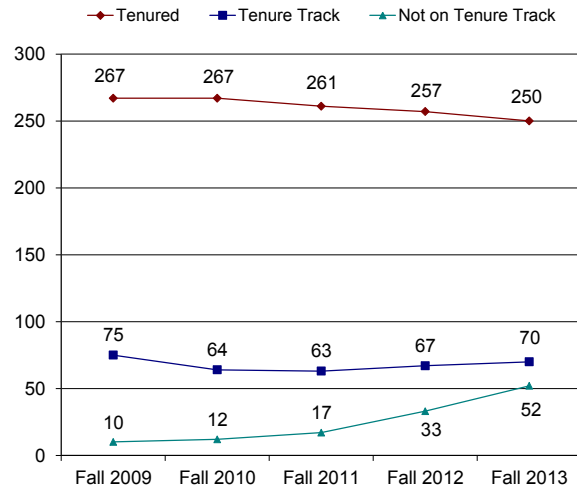
	FALL 2009	FALL 2010	Fall 2011	Fall 2012	Fall 2013	1-YEAR CHANGE	5-YEAR CHANGE
TOTAL FULL-TIME	352	343	341	357	372	4.2%	5.7%
GENDER							
Male	189	179	172	175	180	2.9%	-4.8%
Female	163	164	169	182	192	5.5%	17.8%
RACE / ETHNICITY							
Black	34	33	34	32	30	-6.3%	-11.8%
Hispanic	26	25	22	23	23	0.0%	-11.5%
Asian	39	39	44	52	53	1.9%	35.9%
White	252	245	240	249	266	6.8%	5.6%
Not Reported	1	1	1	1	0	-100.0%	-100.0%
TENURE STATUS							
Tenured	267	267	261	257	250	-2.7%	-6.4%
Tenure Track	75	64	63	67	70	4.5%	-6.7%
Not on Tenure Track	10	12	17	33	52	57.6%	420.0%
RANK							
Professor	130	123	113	106	103	-2.8%	-20.8%
Associate Professor	84	87	86	85	82	-3.5%	-2.4%
Assistant Professor	132	127	133	140	139	-0.7%	5.3%
Instructor	6	6	0	0	0		-100.0%
Lecturer	0	0	9	26	48	84.6%	
EDUCATION							
Highest Degree							
Doctorate	302	292	294	297	298	0.3%	-1.3%
Master's	50	50	47	60	72	20.0%	44.0%
Bachelor's	0	0	0	0	1		
Not Reported	0	1	0	0	1		
Terminal Degree in Field	323	313	311	315	320	1.6%	-0.9%
AGE							
Average Age	55.77	55.89	55.53	55.15	54.57	-1.1%	-2.2%
Faculty >= 60	155	150	143	142	152	7.0%	-1.9%
LOCATION							
Union	345	335	334	332	335	0.9%	-2.9%
Kean Ocean	7	8	7	12	13	8.3%	85.7%
Kean Wenzhou	0	0	0	13	24	84.6%	
PART-TIME FACULTY	24	24	23	23	21	-8.7%	-12.5%
ADJUNCT FACULTY	953	1,000	1,099	1,114	971	-12.8%	1.9%

* Numbers represent full-time faculty only, unless otherwise noted.

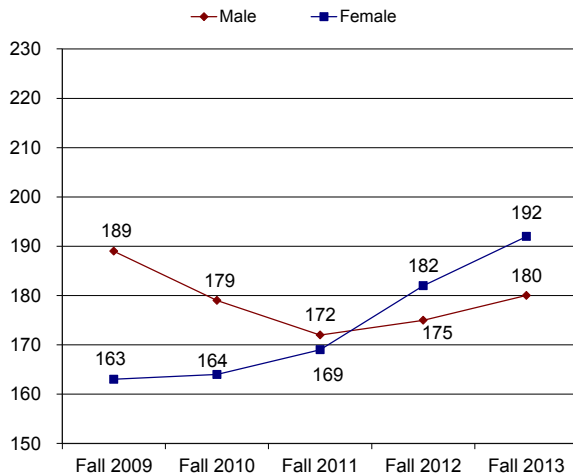
FACULTY HEADCOUNT Fall 2009 - Fall 2013



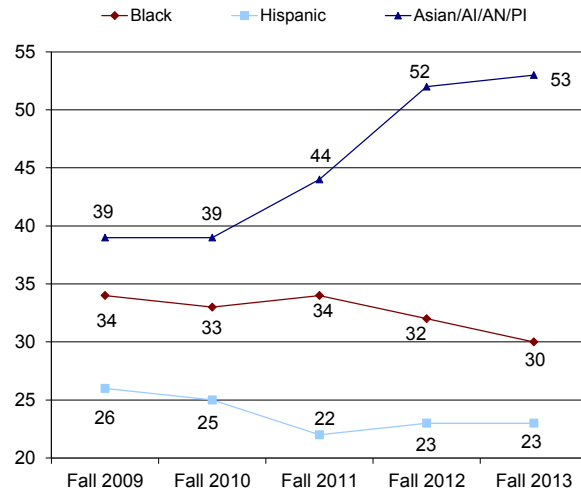
TENURE STATUS Fall 2009 - Fall 2013



GENDER Fall 2009 - Fall 2013



MINORITY FACULTY HEADCOUNT Fall 2009 - Fall 2013



Full-Time Faculty by Department College of Business and Public Management (Union Campus)

		FALL 2009	FALL 2010	FALL 2011	FALL 2012	FALL 2013	1-YEAR CHANGE	5-YEAR CHANGE
CrimJust/PubAdm	FT Faculty	13	12	14	13	12	-7.7%	-7.7%
	Student FTE	660.0	763.4	855.9	826.6	705.3	-14.7%	6.9%
	Course FTE	385.5	427.9	433.4	451.4	418.1	-7.4%	8.5%
Accounting/Finance	FT Faculty	13	12	12	12	14	16.7%	7.7%
	Student FTE	617.3	616.4	600.7	533.0	527.1	-1.1%	-14.6%
	Course FTE	377.1	435.8	428.7	405.3	355.1	-12.4%	-5.9%
Mgmt/Marketing	FT Faculty	13	13	15	12	16	33.3%	23.1%
	Student FTE	873.7	853.7	909.2	854.4	822.0	-3.8%	-5.9%
	Course FTE	435.0	411.0	413.8	394.5	436.1	10.5%	0.2%
BPM Other	FT Faculty	0	0	0	1	0	-100.0%	

* Faculty department is based on faculty's cost center in the HR data system.

* Student FTE = UG Enrolled Credits/16 + GR Enrolled Credits/12

Course FTE = (UG Section Credit * # of Students in the Section)/16+(GR Section Credit * # of Students in the Section)/12

** Kean Ocean and Kean Wenzhou numbers are in separate pages, not included here.

Full-Time Faculty by Department College of Education (Union Campus)

Faculty

		FALL 2009	FALL 2010	FALL 2011	FALL 2012	FALL 2013	1-YEAR CHANGE	5-YEAR CHANGE
Comm Disorder/Deaf	FT Faculty	7	8	8	9	9	0.0%	28.6%
	Student FTE	294.9	347.8	360.7	320.0	335.4	4.8%	13.7%
	Course FTE	210.4	247.9	273.3	229.2	245.7	7.2%	16.8%
Special Edu/Literacy	FT Faculty	15	11	11	10	10	0.0%	-33.3%
	Student FTE	459.7	506.4	504.8	488.0	391.3	-19.8%	-14.9%
	Course FTE	486.4	524.8	467.9	419.8	406.8	-3.1%	-16.4%
Phys Ed/Rec/Health	FT Faculty	16	16	15	16	17	6.3%	6.3%
	Student FTE	710.5	754.6	762.8	707.8	644.8	-8.9%	-9.2%
	Course FTE	683.9	784.1	849.9	800.6	798.0	-0.3%	16.7%
Global Edu Innovation	FT Faculty	3	4	4	5	4	-20.0%	33.3%
	Student FTE	109.6	113.1	63.4	44.7	40.1	-10.3%	-63.4%
	Course FTE	155.8	154.7	146.4	111.6	89.8	-19.5%	-42.4%
Curriculum Teaching	FT Faculty	23	23	22	22	21	-4.5%	-8.7%
	Student FTE	1,288.6	1,325.7	1,174.8	966.6	783.5	-18.9%	-39.2%
	Course FTE	614.8	587.7	533.4	485.6	401.1	-17.4%	-34.8%

* Faculty department is based on faculty's cost center in the HR data system.

* Student FTE = UG Enrolled Credits/16 + GR Enrolled Credits/12

Course FTE = (UG Section Credit * # of Students in the Section)/16+(GR Section Credit * # of Students in the Section)/12

** Kean Ocean and Kean Wenzhou numbers are in separate pages, not included here.

Full-Time Faculty by Department College of Humanities and Social Sciences (Union Campus)

		FALL 2009	FALL 2010	FALL 2011	FALL 2012	FALL 2013	1-YEAR CHANGE	5-YEAR CHANGE
Communication	FT Faculty	12	12	12	12	15	25.0%	25.0%
	Student FTE	377.9	413.3	510.5	495.5	496.2	0.1%	31.3%
	Course FTE	449.8	524.6	629.6	591.4	568.0	-4.0%	26.3%
English	FT Faculty	24	20	20	19	17	-10.5%	-29.2%
	Student FTE	312.0	353.4	322.9	293.8	284.0	-3.3%	-9.0%
	Course FTE	1,028.8	1,091.3	1,085.8	967.5	912.3	-5.7%	-11.3%
History	FT Faculty	15	14	13	13	13	0.0%	-13.3%
	Student FTE	305.9	308.7	280.6	262.7	209.9	-20.1%	-31.4%
	Course FTE	469.6	511.7	453.5	444.9	391.6	-12.0%	-16.6%
Psychology	FT Faculty	15	17	16	14	15	7.1%	0.0%
	Student FTE	829.4	983.8	1,106.7	1,145.8	1,133.5	-1.1%	36.7%
	Course FTE	831.9	836.0	893.4	899.9	912.1	1.4%	9.6%
Social Work	FT Faculty	3	3	2	1	0	-100.0%	-100.0%
	Student FTE	166.9	55.4	0.4				
	Course FTE	79.1	42.9					
Gen Studies	FT Faculty	0	4	9	10	15	50.0%	
	Student FTE	12.9	6.1	0.3				
	Course FTE	355.1	391.1	409.3	424.1	430.9	1.6%	21.3%
Social Sciences	FT Faculty	29	27	24	22	18	-18.2%	-37.9%
	Student FTE	387.6	384.7	357.3	326.9	293.8	-10.2%	-24.2%
	Course FTE	760.2	791.3	783.8	675.6	597.4	-11.6%	-21.4%
HSS Other	FT Faculty	0	1	1	2	0	-100.0%	

* Faculty department is based on faculty's cost center in the HR data system.

* Student FTE = UG Enrolled Credits/16 + GR Enrolled Credits/12

Course FTE = (UG Section Credit * # of Students in the Section)/16+(GR Section Credit * # of Students in the Section)/12

** Kean Ocean and Kean Wenzhou numbers are in separate pages, not included here.

Full-Time Faculty by Department
College of Natural, Applied, and Health Sciences
(Union Campus)

		FALL 2009	FALL 2010	FALL 2011	FALL 2012	FALL 2013	1-YEAR CHANGE	5-YEAR CHANGE
Mathematics	FT Faculty	13	17	15	15	14	-6.7%	7.7%
	Student FTE	213.6	251.0	227.8	214.4	168.2	-21.6%	-21.3%
	Course FTE	652.3	753.4	732.7	708.4	681.8	-3.8%	4.5%
Computer Science	FT Faculty	13	8	7	9	8	-11.1%	-38.5%
	Student FTE	150.9	187.4	234.4	249.6	277.8	11.3%	84.1%
	Course FTE	273.3	297.3	290.0	254.5	249.8	-1.8%	-8.6%
Nursing	FT Faculty	7	7	8	8	5	-37.5%	-28.6%
	Student FTE	117.9	135.2	146.4	149.7	140.8	-6.0%	19.4%
	Course FTE	74.0	89.8	95.3	87.9	86.9	-1.1%	17.5%
Natural Sciences	FT Faculty	35	34	31	27	24	-11.1%	-31.4%
	Student FTE	551.4	666.4	762.2	807.1	828.8	2.7%	50.3%
	Course FTE	790.4	853.3	884.8	879.8	850.8	-3.3%	7.6%
Env Sust Sci	FT Faculty	1	1	2	4	12	200.0%	1100.0%
	Student FTE	207.9	240.8	280.5	277.4	237.2	-14.5%	14.1%
	Course FTE	1.5	3.4	14.0	38.7	49.0	26.7%	3166.7%

* Faculty department is based on faculty's cost center in the HR data system.

* Student FTE = UG Enrolled Credits/16 + GR Enrolled Credits/12

Course FTE = (UG Section Credit * # of Students in the Section)/16+(GR Section Credit * # of Students in the Section)/12

** Kean Ocean and Kean Wenzhou numbers are in separate pages, not included here.

Full-Time Faculty by Department College of Visual and Performing Arts (Union Campus)

		FALL 2009	FALL 2010	FALL 2011	FALL 2012	FALL 2013	1-YEAR CHANGE	5-YEAR CHANGE
Theatre	FT Faculty	7	7	6	7	7	0.0%	0.0%
	Student FTE	74.7	74.6	130.4	131.1	112.6	-14.1%	50.7%
	Course FTE	80.3	84.4	83.2	94.3	82.0	-13.1%	2.1%
Design	FT Faculty	12	11	10	11	13	18.2%	8.3%
	Student FTE	347.8	378.6	374.0	369.7	363.7	-1.6%	4.6%
	Course FTE	193.3	210.4	225.0	243.9	260.1	6.6%	34.6%
Fine Arts	FT Faculty	14	13	11	10	10	0.0%	-28.6%
	Student FTE	162.8	166.0	164.0	154.7	133.7	-13.6%	-17.9%
	Course FTE	377.7	376.3	411.4	350.1	266.8	-23.8%	-29.4%
Music	FT Faculty	7	7	7	7	6	-14.3%	-14.3%
	Student FTE	59.7	75.0	86.3	85.5	69.1	-19.2%	15.8%
	Course FTE	160.3	161.8	206.6	165.6	119.2	-28.0%	-25.6%

* Faculty department is based on faculty's cost center in the HR data system.

* Student FTE = UG Enrolled Credits/16 + GR Enrolled Credits/12

Course FTE = (UG Section Credit * # of Students in the Section)/16+(GR Section Credit * # of Students in the Section)/12

** Kean Ocean and Kean Wenzhou numbers are in separate pages, not included here.

Full-Time Faculty by Department Nathan Weiss Graduate College (Union Campus)

		FALL 2009	FALL 2010	FALL 2011	FALL 2012	FALL 2013	1-YEAR CHANGE	5-YEAR CHANGE
Counselor Edu	FT Faculty	5	5	7	8	7	-12.5%	40.0%
	Student FTE	121.8	143.5	147.5	144.8	136.3	-5.8%	12.0%
	Course FTE	113.8	139.5	143.5	138.8	135.3	-2.5%	18.9%
Edu Leadership	FT Faculty	7	5	6	6	6	0.0%	-14.3%
	Student FTE	114.3	107.3	99.4	89.4	70.2	-21.5%	-38.6%
	Course FTE	137.3	138.0	129.7	101.2	83.0	-18.0%	-39.5%
Grad Mgmt Studies	FT Faculty	3	4	5	4	3	-25.0%	0.0%
	Student FTE	78.0	70.3	50.5	39.3	51.3	30.6%	-34.3%
	Course FTE	71.0	64.5	49.3	41.0	42.3	3.0%	-40.5%
Adv Stu Psyc	FT Faculty	2	3	4	5	7	40.0%	250.0%
	Student FTE	34.6	45.7	56.2	61.8	38.3	-38.0%	10.8%
	Course FTE	11.7	16.8	51.8	54.7	53.9	-1.5%	362.1%
Social Work - Graduate	FT Faculty	6	5	4	5	6	20.0%	0.0%
	Student FTE	128.3	124.2	149.2	120.9	104.3	-13.8%	-18.7%
	Course FTE	130.8	134.6	150.5	120.6	105.5	-12.5%	-19.3%
Occupational Therapy - GR	FT Faculty	3	3	5	4	5	25.0%	66.7%
	Student FTE	72.3	81.4	86.3	87.2	96.2	10.2%	32.9%
	Course FTE	79.8	76.9	91.0	90.7	94.5	4.2%	18.5%

Full-Time Faculty by Department New Jersey Center for Science, Technology and Mathematics (Union Campus)

		FALL 2009	FALL 2010	FALL 2011	FALL 2012	FALL 2013	1-YEAR CHANGE	5-YEAR CHANGE
NJCSTM	FT Faculty	6	8	8	9	6	-33.3%	0.0%
	Student FTE	118.9	107.9	152.0	130.5	142.0	8.8%	19.4%
	Course FTE	52.2	57.8	71.9	78.6	77.3	-1.7%	48.1%

* Faculty department is based on faculty's cost center in the HR data system.

* Student FTE = UG Enrolled Credits/16 + GR Enrolled Credits/12

Course FTE = (UG Section Credit * # of Students in the Section)/16+(GR Section Credit * # of Students in the Section)/12

** Kean Ocean and Kean Wenzhou numbers are in separate pages, not included here.

Full-Time Faculty by Department Kean Ocean

		FALL 2009	FALL 2010	FALL 2011	FALL 2012	FALL 2013	1-YEAR CHANGE	5-YEAR CHANGE
English	FT Faculty	1	1	1	0	1		0.0%
	Student FTE	25.5	35.8	47.3	47.7	32.7	-31.5%	28.1%
	Course FTE	40.9	57.4	60.8	60.8	44.6	-26.5%	9.2%
History	FT Faculty	1	1	1	1	1	0.0%	0.0%
	Student FTE	34.2	57.6	68.1	68.6	54.6	-20.3%	59.8%
	Course FTE	66.6	81.4	87.6	58.1	49.5	-14.8%	-25.6%
Psychology	FT Faculty	0	0	0	1	1	0.0%	
	Student FTE		29.3	66.4	106.1	106.6	0.5%	
	Course FTE	27.6	41.1	76.6	96.8	107.5	11.0%	289.1%
Social Sciences	FT Faculty	1	1	1	1	0	-100.0%	-100.0%
	Student FTE	29.8	32.5	35.4	36.6	25.6	-30.1%	-14.3%
	Course FTE	54.9	51.4	49.5	47.4	27.2	-42.7%	-50.5%
CrimJust/PubAdm	FT Faculty	1	1	0	1	1	0.0%	0.0%
	Student FTE	53.1	72.9	72.3	68.8	63.8	-7.3%	20.1%
	Course FTE	29.4	51.5	47.8	46.7	36.9	-20.9%	25.5%
Accounting/Finance	FT Faculty	1	1	1	0	0		-100.0%
	Student FTE	51.6	55.1	65.6	73.8	65.6	-11.2%	27.0%
	Course FTE	44.1	45.4	51.4	46.3	36.9	-20.2%	-16.2%
Mgmt/Marketing	FT Faculty	1	1	0	1	1	0.0%	0.0%
	Student FTE	92.3	92.3	67.9	76.4	76.8	0.6%	-16.8%
	Course FTE	82.9	53.8	44.3	61.8	62.4	1.0%	-24.7%
Edu Leadership	FT Faculty	0	0	0	1	1	0.0%	
	Student FTE	2.5	2.0	1.3	0.5	5.5	1000.0%	120.0%
	Course FTE	18.0	14.5	9.5	8.3	4.5	-45.5%	-75.0%
Phys Ed/Rec/Health	FT Faculty	0	0	1	1	1	0.0%	
	Student FTE	42.7	55.1	53.0	52.7	33.6	-36.2%	-21.2%
	Course FTE	83.4	107.1	111.4	108.2	66.1	-38.9%	-20.8%
Curriculum Teaching	FT Faculty	1	1	1	1	1	0.0%	0.0%
	Student FTE	62.4	84.1	76.5	78.3	65.8	-16.0%	5.3%
	Course FTE	42.5	76.0	60.1	58.9	34.4	-41.5%	-19.0%
Mathematics	FT Faculty	0	0	0	0	1		
	Student FTE			1.0		0.3		
Nursing	FT Faculty	0	1	1	3	3	0.0%	
	Student FTE	44.5	45.3	62.9	87.1	97.4	11.8%	118.6%
	Course FTE	55.4	58.5	75.1	95.0	103.6	9.0%	87.1%
Natural Sciences	FT Faculty	0	0	0	1	1	0.0%	
	Student FTE	9.0	13.1	19.5	19.4	19.1	-1.6%	112.5%
	Course FTE	9.9	13.9	21.4	21.9	12.4	-43.6%	24.5%

* Faculty department is based on faculty's cost center in the HR data system.

* Student FTE = UG Enrolled Credits/16 + GR Enrolled Credits/12

Course FTE = (UG Section Credit * # of Students in the Section)/16+(GR Section Credit * # of Students in the Section)/12

Full-Time Faculty by Department Kean Wenzhou

Faculty

		FALL 2009	FALL 2010	FALL 2011	FALL 2012	FALL 2013	1-YEAR CHANGE	5-YEAR CHANGE
Communication	FT Faculty				0	1		
	Course FTE					21.0		
English	FT Faculty				9	14	55.6%	
	Student FTE				80.1	113.3	41.3%	
	Course FTE				153.8	221.8	44.3%	
Gen Studies	FT Faculty				2	1	-50.0%	
	Course FTE				12.8	26.4	106.3%	
Fine Arts	FT Faculty				0	1		
	Course FTE					15.9		
Social Sciences	FT Faculty				0	1		
	Course FTE					22.3		
Accounting/Finance	FT Faculty				0	1		
	Student FTE				97.8	229.0	134.1%	
	Course FTE					22.3		
Mgmt/Marketing	FT Faculty				0	1		
	Student FTE					29.0		
	Course FTE					22.9		
Special Edu/Literacy	FT Faculty				1	0	-100.0%	
Mathematics	FT Faculty				0	2		
	Course FTE					43.3		
Computer Science	FT Faculty				1	2	100.0%	
	Student FTE				28.4	58.8	107.3%	
	Course FTE				39.8	38.2	-3.9%	

* Faculty department is based on faculty's cost center in the HR data system.

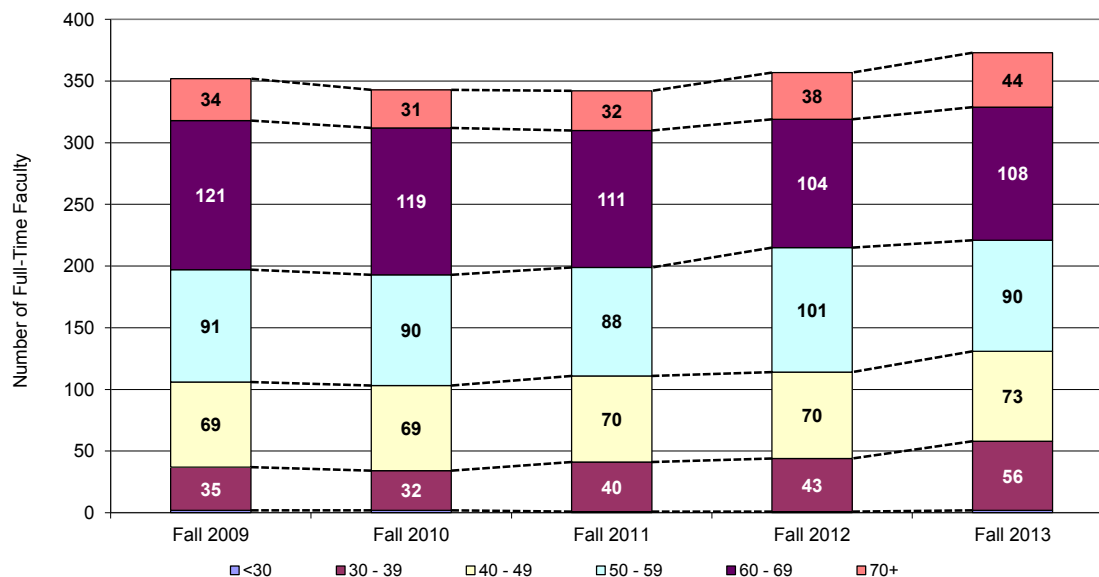
* Student FTE = UG Enrolled Credits/16 + GR Enrolled Credits/12

Course FTE = (UG Section Credit * # of Students in the Section)/16+(GR Section Credit * # of Students in the Section)/12

Distribution of Full-Time Faculty by Age (All Campuses)

	FALL 2009	FALL 2010	FALL 2011	FALL 2012	FALL 2013		1-YEAR CHANGE	5-YEAR CHANGE
					No.	%		
AGE								
< 30	2	2	0	1	1	0.3%	0.0%	-50.0%
30 - 39	35	32	40	43	56	15.1%	30.2%	60.0%
40 - 49	69	69	70	70	73	19.6%	4.3%	5.8%
50 - 59	91	90	88	101	90	24.2%	-10.9%	-1.1%
60 - 69	121	119	111	104	108	29.0%	3.8%	-10.7%
70 +	34	31	32	38	44	11.8%	15.8%	29.4%
TOTAL	352	343	341	357	372	100.0%	4.2%	5.7%
AVERAGE AGE	55.77	55.89	55.53	55.15	54.57		-1.1%	-2.2%

Distribution of Full-Time Faculty by Age Group Fall 2009 - Fall 2013





Office of Institutional Research
Kean University
1000 Morris Avenue
Union, New Jersey 07083
<http://ir.kean.edu>
908.737.3470