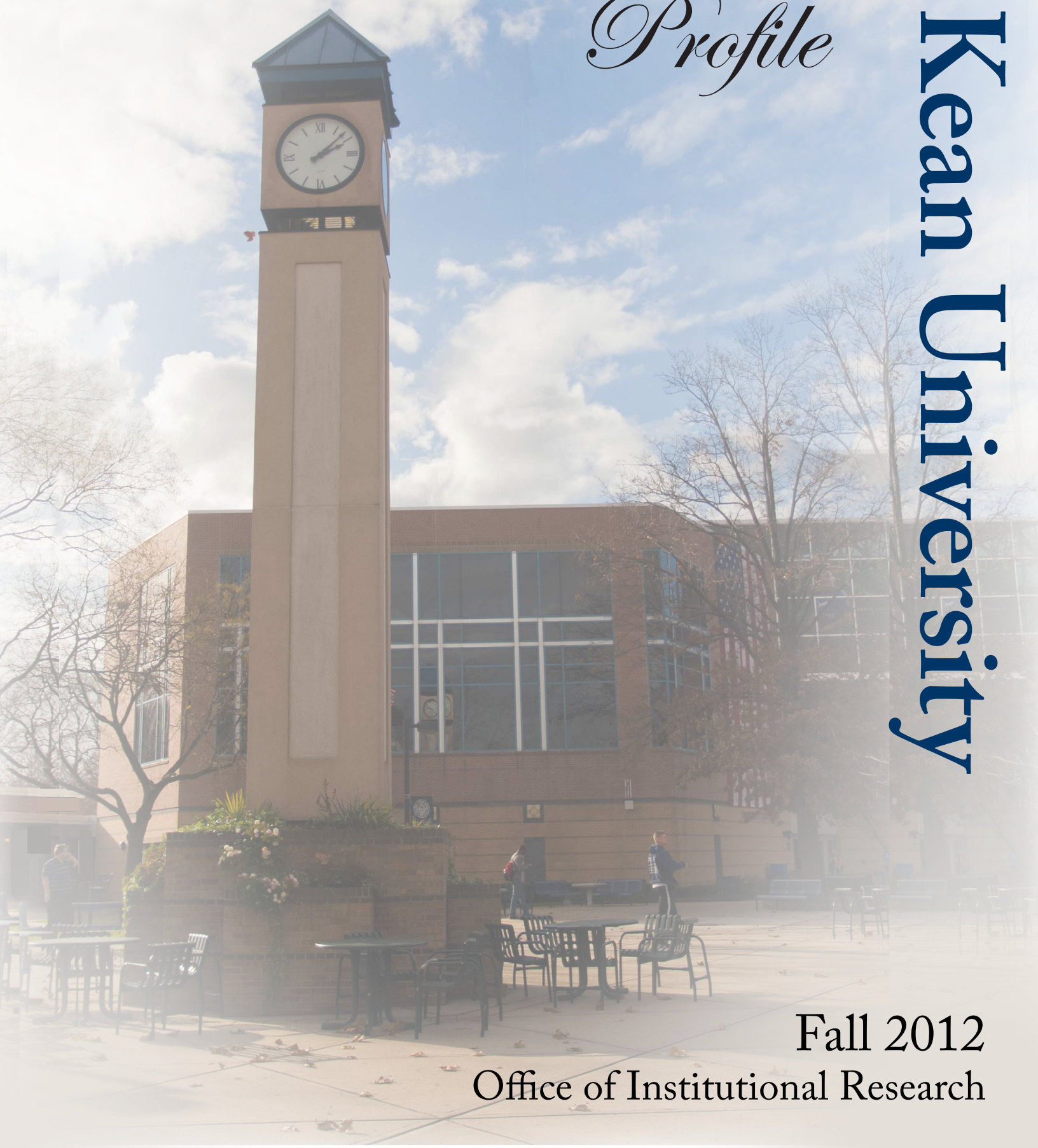




Kean University

*Student and Faculty
Profile*



Fall 2012

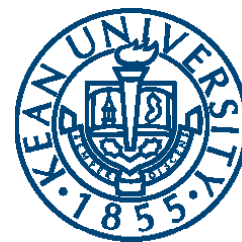
Office of Institutional Research

Quick Facts

Founded:	1855	President:	Dr. Dawood Farahi
Campus Size:	185.4 acres	Mailing Address:	1000 Morris Avenue Union, New Jersey 07083
Main Campus:	121.5 acres		
East Campus:	28.5 acres		
Liberty Hall Campus:	35.4 acres	Main Phone:	(908) 737-KEAN (908) 737-5326
Number of Colleges:	6		
		Admissions:	(908) 737-7100
Degree Programs Offered			
Undergraduate:	49	Public Info:	(908) 737-NEWS (908) 737-6397
Graduate			
- Master:	31		
- Post Master Professional Diploma:	2		
- Doctor:	2		
Average Class Size:	20		
Student/Faculty Ratio:	17:1		
2012-2013 Tuition and Fees:			
(Full-Time, In-State)			
Uundergraduate:	\$10,600.50		
Graduate:	\$14,709.00		
Doctor:	\$16,606.00		

Contents

<i>Enrollment.....</i>	<i>Page 01</i>
<i>Degrees Conferred.....</i>	<i>Page 25</i>
<i>Employees.....</i>	<i>Page 35</i>
<i>Faculty.....</i>	<i>Page 39</i>
<i>Kean Wenzhou.....</i>	<i>Page 51</i>



Kean University- Enrollment

Enrollment

Page 02	At-a-Glance
Page 04	Enrollment Trends
Page 06	Enrollment by Geographic Origin
Page 08	Retention & Graduation Rates
Page 10	Enrollment by Department and Program
Page 17	Second Majors by Program
Page 18	Course FTE

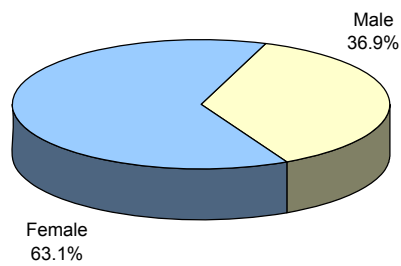


Fall 2012 Enrollment At-a-Glance

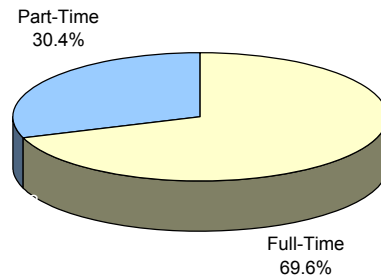
	UNIVERSITY		UNDERGRADUATE		GRADUATE	
	No.	%	No.	%	No.	%
ENROLLMENT						
Headcount	15,391	100%	12,895	100%	2,496	100%
F.T.E.	11642.8		10263.3		1379.4	
GENDER						
Male	5,683	36.9%	5,060	39.2%	623	25.0%
Female	9,708	63.1%	7,835	60.8%	1,873	75.0%
RACE / ETHNICITY						
Black	2,759	17.9%	2,288	17.7%	471	18.9%
Hispanic	3,269	21.2%	2,869	22.2%	400	16.0%
Asian	918	6.0%	790	6.1%	128	5.1%
White	6,295	40.9%	4,859	37.7%	1,436	57.5%
MultiRace	145	0.9%	131	1.0%	14	0.6%
Not Reported	2,005	13.0%	1,958	15.2%	47	1.9%
ATTENDANCE STATUS						
Full-Time	10,715	69.6%	9,899	76.8%	816	32.7%
Part-Time	4,676	30.4%	2,996	23.2%	1,680	67.3%
ADMISSION STATUS						
Regular	6,268	40.7%	4,025	31.2%	2,243	89.9%
Special	1,666	10.8%	1,666	12.9%		
E.O.F.	625	4.1%	625	4.8%		
Transfer	6,044	39.3%	6,044	46.9%		
E.O.F. Transfer	312	2.0%	312	2.4%		
Other	476	3.1%	223	1.7%	253	10.1%
REGISTRATION STATUS						
First-Time	2,455	16.0%	1,583	12.3%	872	34.9%
Transfer	1,505	9.8%	1,505	11.7%		
Stop-out / Readmit	620	4.0%	620	4.8%		
Continuing	10,811	70.2%	9,187	71.2%	1,624	65.1%
AGE						
<25	9,863	64.1%	9,362	72.6%	501	20.1%
25 - 34	3,516	22.8%	2,367	18.4%	1,149	46.0%
35 - 44	1,106	7.2%	684	5.3%	422	16.9%
45 - 54	690	4.5%	390	3.0%	300	12.0%
55+	216	1.4%	92	0.7%	124	5.0%
Average Age	26		24		33	
MATRICULATION STATUS						
Degree Seeking	14,373	93.4%	12,543	97.3%	1,830	73.3%
Certificate / Non-Degree	570	3.7%	152	1.2%	418	16.7%
Non-Matriculated	448	2.9%	200	1.6%	248	9.9%
STATE RESIDENCE						
New Jersey	14,905	96.8%	12,516	97.1%	2,389	95.7%
Out-of-State	273	1.8%	207	1.6%	66	2.6%
International	213	1.4%	172	1.3%	41	1.6%

Additional information is available online at <http://ir.kean.edu>.

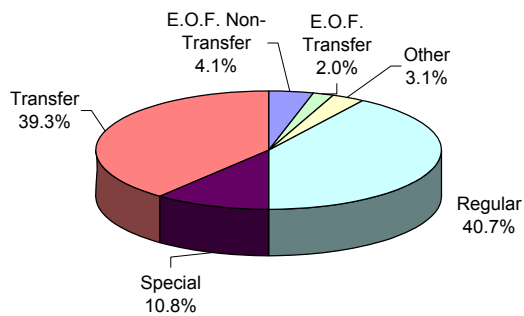
**DISTRIBUTION OF STUDENTS
By Gender**



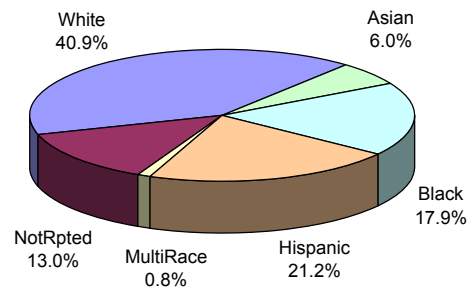
**DISTRIBUTION OF STUDENTS
By Attendance Status**



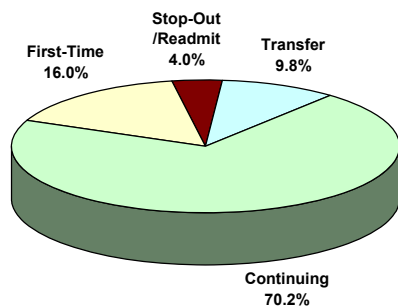
**DISTRIBUTION OF STUDENTS
By Admission Status**



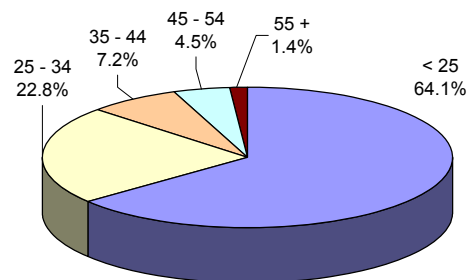
**DISTRIBUTION OF STUDENTS
By Race/Ethnicity**



**DISTRIBUTION OF STUDENTS
By Registration Status**



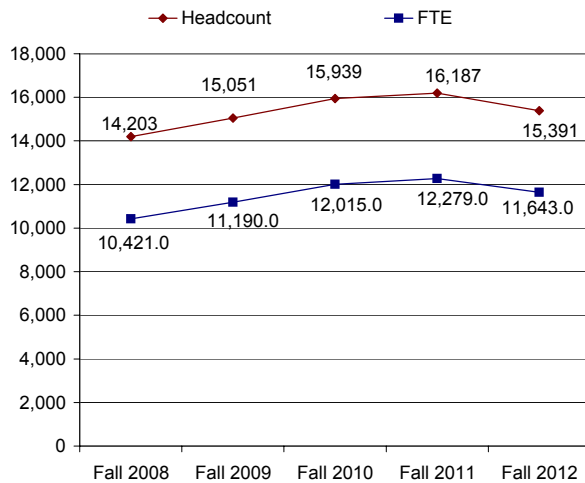
**DISTRIBUTION OF STUDENTS
By Age Group**



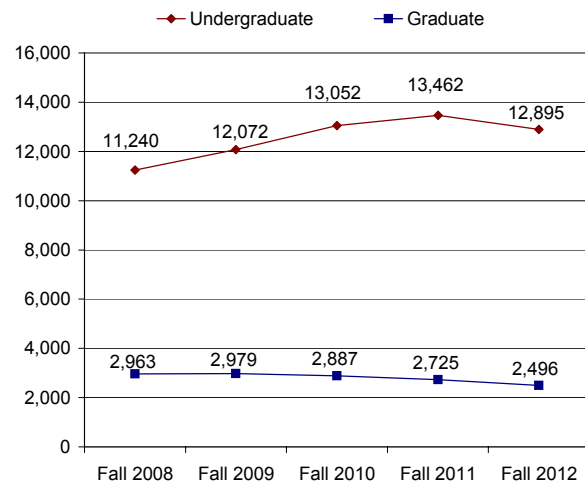
Enrollment Trends (Fall 2008 - Fall 2012)

	FALL 2008	FALL 2009	FALL 2010	FALL 2011	FALL 2012	1 YEAR CHANGE	5 YEAR CHANGE
ENROLLMENT							
Headcount	14,203	15,051	15,939	16,187	15,391	-4.9%	8.4%
Undergraduate	11,240	12,072	13,052	13,462	12,895	-4.2%	14.7%
Graduate	2,963	2,979	2,887	2,725	2,496	-8.4%	-15.8%
F.T.E.	10421.0	11189.8	12015.2	12278.8	11642.8	-5.2%	11.7%
GENDER							
Male	4,846	5,300	5,673	5,982	5,683	-5.0%	17.3%
Female	9,357	9,751	10,266	10,205	9,708	-4.9%	3.8%
RACE/ ETHNICITY							
Black	2,745	2,804	2,989	3,029	2,759	-8.9%	0.5%
Hispanic	2,634	2,909	3,344	3,515	3,269	-7.0%	24.1%
Asian	901	1,083	1,114	1,052	918	-12.7%	1.9%
White	7,232	7,511	7,907	7,288	6,295	-13.6%	-13.0%
MultiRace	0	0	122	162	145	-10.5%	
Not Reported	691	744	463	1,141	2,005	75.7%	190.2%
ATTENDANCE STATUS							
Full-Time	9,181	10,081	11,031	11,382	10,715	-5.9%	16.7%
Part-Time	5,022	4,970	4,908	4,805	4,676	-2.7%	-6.9%
ADMISSIONS STATUS							
Regular	6,425	6,432	6,725	6,656	6,268	-5.8%	-2.4%
Special	930	1,127	1,413	1,694	1,666	-1.7%	79.1%
E.O.F.	937	918	806	735	625	-15.0%	-33.3%
Transfer	4,895	5,475	6,083	6,313	6,044	-4.3%	23.5%
E.O.F. Transfer	273	323	324	302	312	3.3%	14.3%
Other	743	776	588	487	476	-2.3%	-35.9%
REGISTRATION STATUS							
First-Time	2,624	2,870	2,948	2,863	2,455	-14.3%	-6.4%
Transfer	1,497	1,733	1,914	1,691	1,505	-11.0%	0.5%
Stop-out/ Readmit	604	583	588	662	620	-6.3%	2.6%
Continuing	9,478	9,865	10,489	10,971	10,811	-1.5%	14.1%
AGE							
<25	8,226	8,953	9,832	10,314	9,863	-4.4%	19.9%
25-34	3,446	3,638	3,761	3,672	3,516	-4.2%	2.0%
35-44	1,351	1,309	1,278	1,179	1,106	-6.2%	-18.1%
45-54	913	872	831	783	690	-11.9%	-24.4%
55+	267	279	237	239	216	-9.6%	-19.1%
Average Age	26.93	26.59	26.10	25.74	25.68	-0.3%	-4.6%
MATRICULATION STATUS							
Degree Seeking	12,830	13,643	14,630	15,113	14,373	-4.9%	12.0%
Certificate/ Non-Degree	656	717	763	620	570	-8.1%	-13.1%
Non-Matriculated	717	691	546	454	448	-1.3%	-37.5%
STATE RESIDENCE							
New Jersey	13,680	14,494	15,364	15,646	14,905	-4.7%	9.0%
Out-of-State	246	275	304	293	273	-6.8%	11.0%
International	277	282	271	248	213	-14.1%	-23.1%

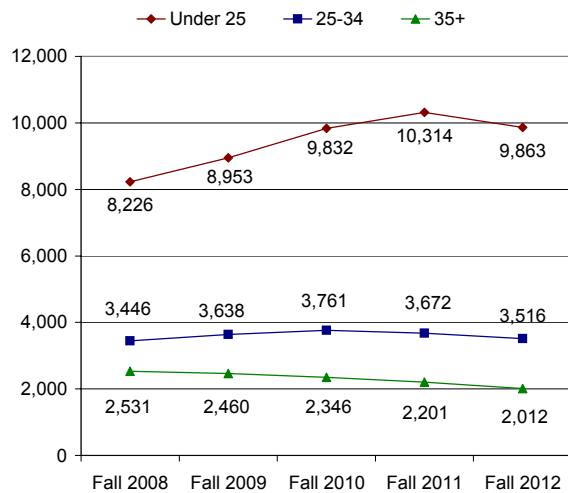
HEADCOUNT & FTE Fall 2008 - Fall 2012



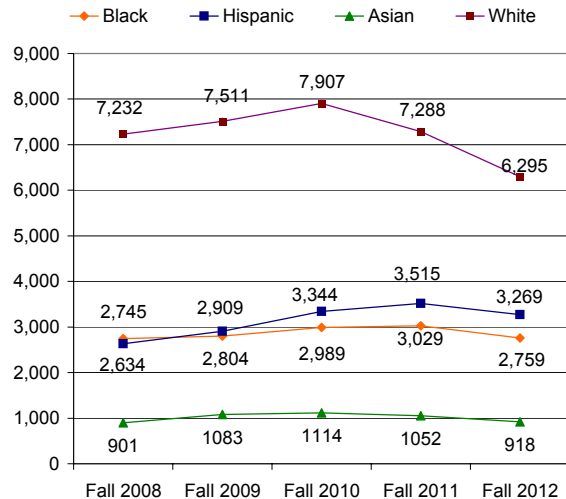
UNDERGRADUATE & GRADUATE Fall 2008 - Fall 2012



AGE GROUP Fall 2008 - Fall 2012



RACE/ETHNICITY Fall 2008 - Fall 2012



Enrollment by Geographic Origin

	FALL 2008	FALL 2009	FALL 2010	FALL 2011	FALL 2012		1-YEAR CHANGE	5-YEAR CHANGE
					No.	%		
NEW JERSEY RESIDENTS	13,680	14,494	15,364	15,646	14,905	96.8%	-4.7%	9.0%
Union	3,752	3,819	3,946	4,101	3,815	24.8%	-7.0%	1.7%
Middlesex	3,263	3,277	3,431	3,407	3,183	20.7%	-6.6%	-2.5%
Essex	1,655	1,734	1,802	1,752	1,675	10.9%	-4.4%	1.2%
Ocean	940	1,219	1,429	1,540	1,609	10.5%	4.5%	71.2%
Monmouth	904	971	1,041	1,048	961	6.2%	-8.3%	6.3%
Hudson	588	628	707	789	753	4.9%	-4.6%	28.1%
Somerset	769	804	832	729	694	4.5%	-4.8%	-9.8%
Bergen	465	495	562	644	627	4.1%	-2.6%	34.8%
Morris	380	445	448	406	384	2.5%	-5.4%	1.1%
Passaic	262	303	305	292	327	2.1%	12.0%	24.8%
Mercer	136	155	175	221	210	1.4%	-5.0%	54.4%
Hunterdon	135	150	160	169	159	1.0%	-5.9%	17.8%
Burlington	115	130	133	148	148	1.0%	0.0%	28.7%
Camden	56	72	76	84	85	0.6%	1.2%	51.8%
Warren	75	98	109	102	83	0.5%	-18.6%	10.7%
Sussex	51	75	82	93	76	0.5%	-18.3%	49.0%
Atlantic	51	51	56	52	42	0.3%	-19.2%	-17.6%
Gloucester	38	38	39	35	35	0.2%	0.0%	-7.9%
Cape May	13	8	11	14	23	0.1%	64.3%	76.9%
Cumberland	20	14	12	14	11	0.1%	-21.4%	-45.0%
Salem	12	8	8	6	5	0.0%	-16.7%	-58.3%
NON-NJ RESIDENTS	246	275	304	292	266	1.7%	-8.9%	8.1%
New York	184	204	218	214	197	1.3%	-7.9%	7.1%
Pennsylvania	25	35	39	30	23	0.1%	-23.3%	-8.0%
Other	37	36	47	48	46	0.3%	-4.2%	24.3%
INTERNATIONAL	277	282	271	248	213	1.4%	-14.1%	-23.1%
NOT REPORTED	0	0	0	1	7	0.0%	600.0%	
TOTAL	14,203	15,051	15,939	16,187	15,391	100.0%	-4.9%	8.4%

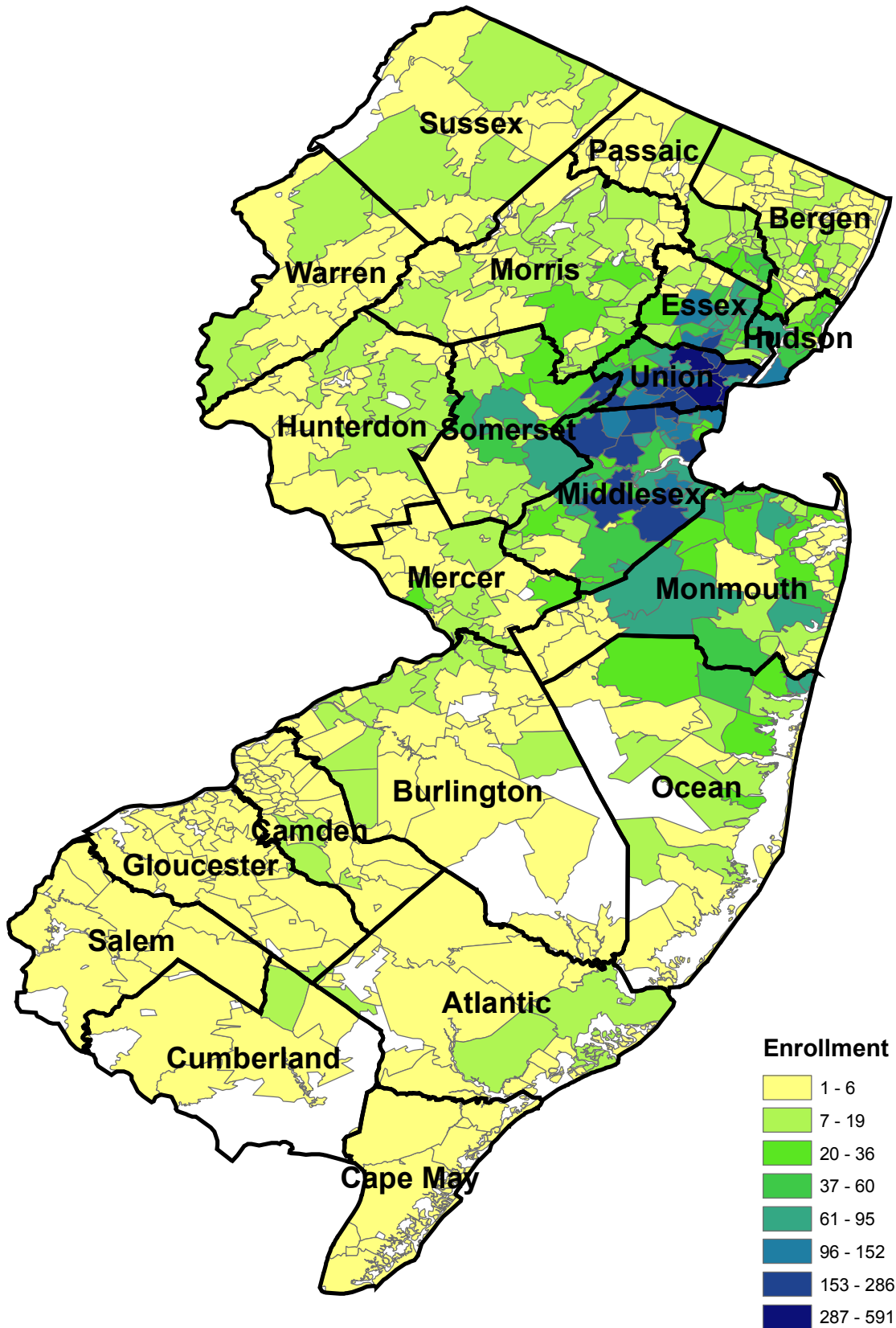
Top 10 Countries of Citizenship for International Students

(in alphabetical order)

Bermuda	Brazil
China	Colombia
Ghana	Haiti
India	Korea.S
Mexico	Nigeria

International students come from 55 different countries and areas.

Fall 2012 Enrollment by ZIP Code



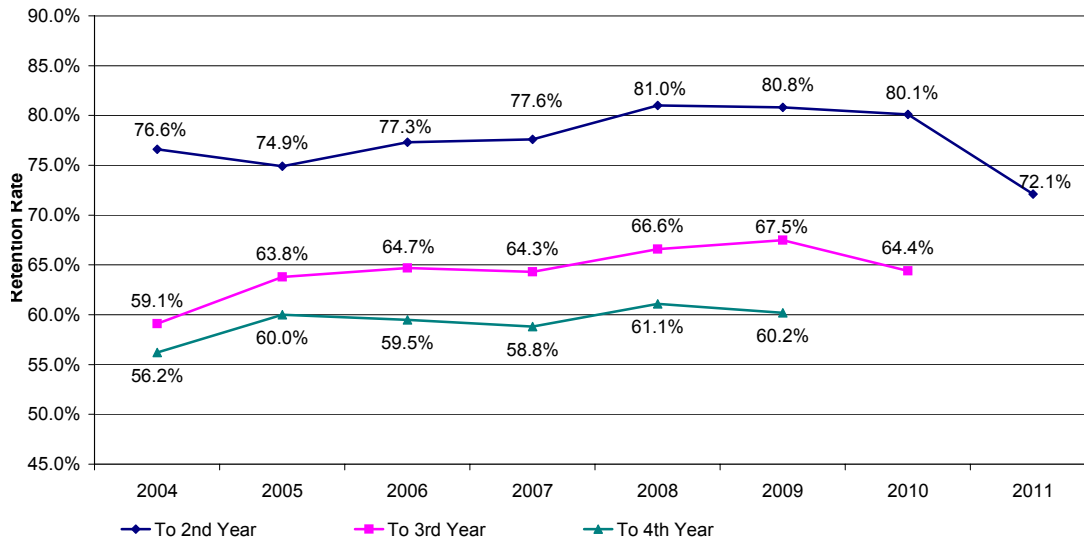
First-Time, Full-Time Freshmen Retention Rates

COHORT YEAR	HEAD COUNT	# CONTINUED			% CONTINUED		
		TO 2ND YEAR	TO 3RD YEAR	TO 4TH YEAR	TO 2ND YEAR	TO 3RD YEAR	TO 4TH YEAR
2002	1,317	991	776	706	75.25%	58.92%	53.61%
2003	1,311	982	821	714	74.90%	62.62%	54.46%
2004	1,254	961	741	705	76.63%	59.09%	56.22%
2005	1,391	1,042	887	835	74.91%	63.77%	60.03%
2006	1,394	1,078	902	829	77.33%	64.71%	59.47%
2007	1,447	1,123	930	851	77.61%	64.27%	58.81%
2008	1,418	1,148	945	866	80.96%	66.64%	61.07%
2009	1,518	1,226	1,024	914	80.76%	67.46%	60.21%
2010	1,731	1,386	1,115	-	80.07%	64.41%	-
2011	1,794	1,294	-	-	72.13%	-	-

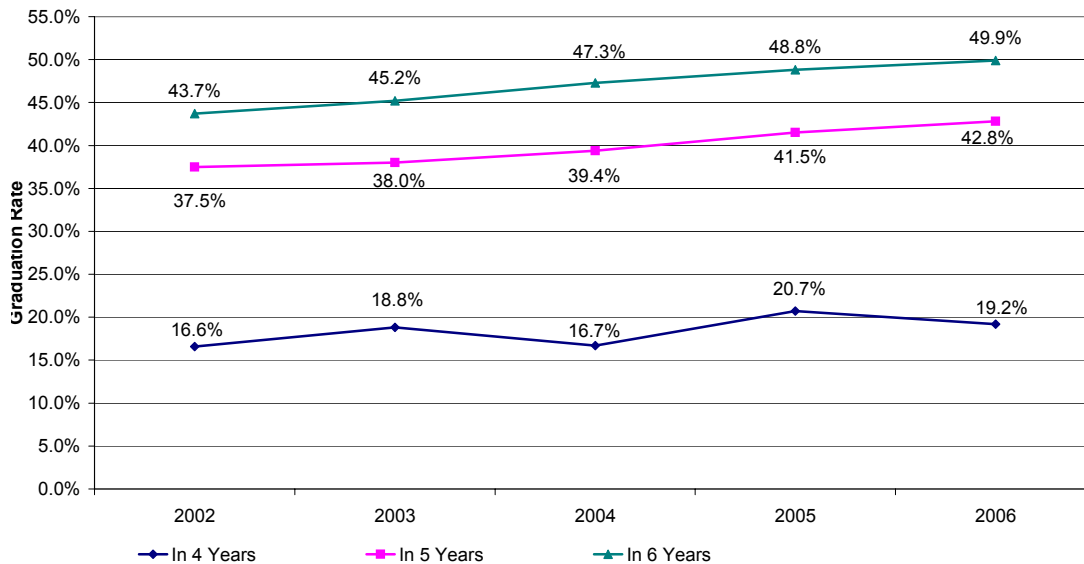
First-Time, Full-Time Freshmen Graduation Rates

COHORT YEAR	HEAD COUNT	# GRADUATED			% GRADUATED		
		IN 4 YEARS	IN 5 YEARS	IN 6 YEARS	IN 4 YEARS	IN 5 YEARS	IN 6 YEARS
2002	1,317	218	494	575	16.55%	37.51%	43.66%
2003	1,311	247	498	593	18.84%	37.99%	45.23%
2004	1,254	210	494	593	16.75%	39.39%	47.29%
2005	1,391	288	577	679	20.70%	41.48%	48.81%
2006	1,394	267	596	696	19.15%	42.75%	49.93%

First-Time, Full-Time Degree-Seeking Undergraduate Retention Rates 2004 - 2011 Cohorts



First-Time, Full-Time Degree-Seeking Undergraduate Graduation Rates 2002 - 2006 Cohorts



Enrollment by Department and Program College of Business and Public Administration

	FALL 2008	FALL 2009	FALL 2010	FALL 2011	FALL 2012	1-YEAR CHANGE	5-YEAR CHANGE
ENROLLMENT							
Accounting/Finance							
Accounting (UG)	516	581	598	597	541	-9.4%	4.8%
Accounting (GR)	67	72	69	59	43	-27.1%	-35.8%
Finance (UG)	190	209	188	214	211	-1.4%	11.1%
Accounting/Finance Total:	773	862	855	870	795	-8.6%	2.8%
CrimJust/PubAdm							
Criminal Justice (UG)	621	654	768	859	820	-4.5%	32.0%
Criminal Justice (GR)	0	1	3	4	12	200.0%	
Public Admin. (UG)	121	110	142	150	138	-8.0%	14.0%
Public Admin. (GR)	138	140	143	142	154	8.5%	11.6%
CrimJust/PubAdm Total:	880	905	1,056	1,155	1,124	-2.7%	27.7%
Mgmt/Marketing							
Management Sci. (UG)	767	884	879	914	874	-4.4%	14.0%
Marketing (UG)	294	311	302	302	299	-1.0%	1.7%
Mgmt/Marketing Total:	1,061	1,195	1,181	1,216	1,173	-3.5%	10.6%
<i>BPM UG Total:</i>	<i>2,509</i>	<i>2,749</i>	<i>2,877</i>	<i>3,036</i>	<i>2,883</i>	<i>-5.0%</i>	<i>14.9%</i>
<i>BPM GR Total:</i>	<i>205</i>	<i>213</i>	<i>215</i>	<i>205</i>	<i>209</i>	<i>2.0%</i>	<i>2.0%</i>
BPM Total:	2,714	2,962	3,092	3,241	3,092	-4.6%	13.9%

Enrollment by Department and Program College of Education

	FALL 2008	FALL 2009	FALL 2010	FALL 2011	FALL 2012	1-YEAR CHANGE	5-YEAR CHANGE
ENROLLMENT							
Comm Disorder/Deaf							
GND.Speech Upgrade Proj (GR)	47	23	12	14	8	-42.9%	-83.0%
Speech Lang. Pathology (GR)	125	135	164	166	174	4.8%	39.2%
Speech, Lang Hear. Sci. (UG)	174	205	234	235	200	-14.9%	14.9%
Comm Disorder/Deaf Total:	346	363	410	415	382	-8.0%	10.4%
Curriculum Teaching							
Early Childhood Edu. (UG)	548	563	581	511	424	-17.0%	-22.6%
Early Childhood Edu. (GR)	61	60	49	49	44	-10.2%	-27.9%
Elem/Mid/Sec Edu (UG)	876	1,051	1,069	992	830	-16.3%	-5.3%
Instruction & Curriculum (GR)	197	176	237	177	158	-10.7%	-19.8%
Curriculum Teaching Total:	1,682	1,850	1,936	1,729	1,456	-15.8%	-13.4%
Global Edu Innovation							
Spanish (UG)	179	152	154	87	65	-25.3%	-63.7%
Global Edu Innovation Total:	179	152	154	87	65	-25.3%	-63.7%
Phys Ed/Rec/Health							
Athletic Training (UG)	77	98	124	168	184	9.5%	139.0%
Exercise Science (GR)	22	17	17	23	22	-4.3%	0.0%
Physical Edu (UG)	550	695	743	669	591	-11.7%	7.5%
Recreation Admin. (UG)	86	89	89	120	121	0.8%	40.7%
Phys Ed/Rec/Health Total:	735	899	973	980	918	-6.3%	24.9%
Special Edu/Literacy							
Edu/Media/Spec. (GR)	23	17	7	3	0	*	*
Educator of Indivs with Disabilities (UG)	271	394	493	534	531	-0.6%	95.9%
Reading Spec. (GR)	76	72	55	37	39	5.4%	-48.7%
Special Edu (GR)	351	365	355	325	294	-9.5%	-16.2%
Special Edu/Literacy Total:	721	848	910	899	864	-3.9%	19.8%
<i>EDU UG Total:</i>	<i>2,761</i>	<i>3,247</i>	<i>3,487</i>	<i>3,316</i>	<i>2,946</i>	<i>-11.2%</i>	<i>6.7%</i>
<i>EDU GR Total:</i>	<i>902</i>	<i>865</i>	<i>896</i>	<i>794</i>	<i>739</i>	<i>-6.9%</i>	<i>-18.1%</i>
EDU Total:	3,663	4,112	4,383	4,110	3,685	-10.3%	0.6%

* Phasing-Out program

Enrollment by Department and Program College of Humanities and Social Sciences

	FALL 2008	FALL 2009	FALL 2010	FALL 2011	FALL 2012	1-YEAR CHANGE	5-YEAR CHANGE
ENROLLMENT							
Communication							
Communication (UG)	218	249	338	521	540	3.6%	147.7%
Communication Studies (GR)	17	14	16	21	21	0.0%	23.5%
Media Film (UG)	154	184	137	57	21	-63.2%	-86.4%
Communication Total:	389	447	491	599	582	-2.8%	49.6%
English							
English (UG)	387	433	492	475	420	-11.6%	8.5%
English Writing (GR)	0	2	11	14	15	7.1%	
English Total:	387	435	503	489	435	-11.0%	12.4%
Gen Studies							
Philosophy and Religion (UG)	13	15	7	1	0	*	*
Gen Studies Total:	13	15	7	1	0		
History							
History (UG)	379	420	451	443	417	-5.9%	10.0%
Holocaust & Genocide (GR)	18	20	14	9	16	77.8%	-11.1%
History Total:	397	440	465	452	433	-4.2%	9.1%
Psychology							
Behavioral Sci (GR)	38	44	17	6	2	*	*
Edu Psych (GR)	10	14	10	4	2	*	*
Marri & Fam Therapy (GR)	24	18	24	31	37	19.4%	54.2%
Psych Rehab (UG)	54	50	69	78	102	30.8%	88.9%
Psychology (UG)	833	895	1,101	1,261	1,316	4.4%	58.0%
Psychology (GR)	0	5	44	61	66	8.2%	
Psychology Total:	959	1,026	1,265	1,441	1,525	5.8%	59.0%
Social Sciences							
Economics (UG)	228	132	88	72	61	-15.3%	-73.2%
Political Science (UG)	139	127	105	107	105	-1.9%	-24.5%
Political Science (GR)	16	10	16	10	4	-60.0%	-75.0%
Soc/SocJust (GR)	12	24	26	31	34	9.7%	183.3%
Sociology (UG)	294	246	299	281	262	-6.8%	-10.9%
Social Sciences Total:	689	539	534	501	466	-7.0%	-32.4%
Social Work							
Social Work (UG)	252	204	64	1	0	*	*
Social Work Total:	252	204	64	1	0		
<i>HSS UG Total:</i>	<i>2,951</i>	<i>2,955</i>	<i>3,151</i>	<i>3,297</i>	<i>3,244</i>	<i>-1.6%</i>	<i>9.9%</i>
<i>HSS GR Total:</i>	<i>135</i>	<i>151</i>	<i>178</i>	<i>187</i>	<i>197</i>	<i>5.3%</i>	<i>45.9%</i>
HSS Total:	3,086	3,106	3,329	3,484	3,441	-1.2%	11.5%

* Phasing-Out program

Enrollment by Department and Program

College of Natural, Applied, and Health Sciences

	FALL 2008	FALL 2009	FALL 2010	FALL 2011	FALL 2012	1-YEAR CHANGE	5-YEAR CHANGE
ENROLLMENT							
Computer Science							
Comp.Integrated Design & Mfg. Tech. (UG)	1	0	0	0	0	*	*
Computer Info. Systems (GR)	0	0	0	2	9	350.0%	
Computer Science (UG)	132	161	187	223	210	-5.8%	59.1%
Electronics Tech. (UG)	15	7	1	0	0	*	*
Information Technology (UG)	27	24	53	73	90	23.3%	233.3%
Computer Science Total:	175	192	241	298	309	3.7%	76.6%
Env & Life Sci							
Biology-BS (UG)	161	194	223	268	262	-2.2%	62.7%
Earth Science - BS (UG)	33	38	43	34	28	-17.6%	-15.2%
Env & Life Sci Total:	194	232	266	302	290	-4.0%	49.5%
Mathematics							
Comp/Stat/Math. (GR)	7	7	7	5	2	*	*
Math. Edu. (GR)	13	10	11	12	14	16.7%	7.7%
Math. Science (UG)	249	265	307	280	259	-7.5%	4.0%
Mathematics Total:	269	282	325	297	275	-7.4%	2.2%
Natural Sciences							
Biology (UG)	363	438	574	676	735	8.7%	102.5%
Chemistry (UG)	111	90	100	102	103	1.0%	-7.2%
Earth Science (UG)	53	45	53	47	39	-17.0%	-26.4%
HIM (UG)	32	25	25	26	27	3.8%	-15.6%
Medical Tech. (UG)	61	71	70	87	87	0.0%	42.6%
Natural Sciences Total:	620	669	822	938	991	5.7%	59.8%
Nursing							
M.S.N./M.P.A. in Nursing (GR)	5	6	9	9	5	*	*
Nursing (UG)	298	287	318	396	437	10.4%	46.6%
Nursing (GR)	89	90	93	102	113	10.8%	27.0%
Nursing Total:	392	383	420	507	555	9.5%	41.6%
Sustainability Studies							
Sustainability Science (UG)	0	0	9	26	26	0.0%	
Sustainability Studies Total:	0	0	9	26	26	0.0%	
NAHS UG Total:	1,536	1,645	1,963	2,238	2,303	2.9%	49.9%
NAHS GR Total:	114	113	120	130	143	10.0%	25.4%
NAHS Total:	1,650	1,758	2,083	2,368	2,446	3.3%	48.2%

* Phasing-Out program

Enrollment by Department and Program

College of Visual and Performing Arts

	FALL 2008	FALL 2009	FALL 2010	FALL 2011	FALL 2012	1-YEAR CHANGE	5-YEAR CHANGE
ENROLLMENT							
Design							
Graphic Comm (UG)	60	49	47	27	16	-40.7%	-73.3%
Graphic Comm (GR)	24	16	12	10	7	*	*
Industrial Design (UG)	49	54	67	69	63	-8.7%	28.6%
Interior Design (UG)	148	156	171	157	155	-1.3%	4.7%
Visual Comm (UG)	160	150	174	205	213	3.9%	33.1%
Design Total:	441	425	471	468	454	-3.0%	2.9%
Fine Arts							
Art History (UG)	19	15	13	16	16	0.0%	-15.8%
Fine Arts (UG)	105	121	113	106	99	-6.6%	-5.7%
Fine Arts Edu (GR)	49	48	46	42	36	-14.3%	-26.5%
Studio Art (UG)	31	37	48	59	54	-8.5%	74.2%
Fine Arts Total:	204	221	220	223	205	-8.1%	0.5%
Music							
Music (UG)	39	33	33	41	42	2.4%	7.7%
Music Edu. (UG)	41	43	58	64	64	0.0%	56.1%
Music Total:	80	76	91	105	106	1.0%	32.5%
Theatre							
Speech & Theatre (UG)	6	1	0	0	0	*	*
Theatre (UG)	61	65	61	107	107	0.0%	75.4%
Theatre Design & Tech. (UG)	3	6	3	6	9	50.0%	200.0%
Theatre Performance (UG)	14	10	17	22	18	-18.2%	28.6%
Theatre Total:	84	82	81	135	134	-0.7%	59.5%
VPA Other							
Liberal Studies (GR)	20	16	16	12	15	25.0%	-25.0%
VPA Other Total:	20	16	16	12	15	25.0%	-25.0%
<i>VPA UG Total:</i>	<i>736</i>	<i>740</i>	<i>805</i>	<i>879</i>	<i>856</i>	<i>-2.6%</i>	<i>16.3%</i>
<i>VPA GR Total:</i>	<i>93</i>	<i>80</i>	<i>74</i>	<i>64</i>	<i>58</i>	<i>-9.4%</i>	<i>-37.6%</i>
VPA Total:	829	820	879	943	914	-3.1%	10.3%

* Phasing-Out program

Enrollment by Department and Program Nathan Weiss Graduate College

	FALL 2008	FALL 2009	FALL 2010	FALL 2011	FALL 2012	1-YEAR CHANGE	5-YEAR CHANGE
ENROLLMENT							
Adv Stu Psyc							
PsyD.School & Clinical Psych (GR_D)	0	10	17	27	37	37.0%	
School Psychology (GR)	32	24	28	32	33	3.1%	3.1%
Adv Stu Psyc Total:	32	34	45	59	70	18.6%	118.8%
Counselor Edu							
Counselor Edu (GR)	236	245	282	285	272	-4.6%	15.3%
Counselor Edu Total:	236	245	282	285	272	-4.6%	15.3%
Edu Leadership							
EdD.Urban/Leader (GR_D)	19	33	45	59	53	-10.2%	178.9%
Edu Admin. (GR)	288	269	231	209	190	-9.1%	-34.0%
Edu Leadership Total:	307	302	276	268	243	-9.3%	-20.8%
Grad Mgmt Studies							
MBA in Global Management (GR)	103	112	96	69	57	-17.4%	-44.7%
MIS (GR)	11	6	1	0	0	*	*
Grad Mgmt Studies Total:	114	118	97	69	57	-17.4%	-50.0%
Occupational Therapy - GR							
Occupational Therapy (UG)	0	0	0	0	0		
Occupational Therapy (GR)	79	77	81	86	89	3.5%	12.7%
Occupational Therapy - GR Total:	79	77	81	86	89	3.5%	12.7%
Social Work - Graduate							
Social Work (GR)	81	113	122	150	124	-17.3%	53.1%
Social Work - Graduate Total:	81	113	122	150	124	-17.3%	53.1%
<i>NWGC UG Total:</i>	<i>0</i>	<i>0</i>	<i>0</i>	<i>0</i>	<i>0</i>		
<i>NWGC GR_D Total:</i>	<i>19</i>	<i>43</i>	<i>62</i>	<i>86</i>	<i>90</i>	<i>4.7%</i>	<i>373.7%</i>
<i>NWGC GR Total:</i>	<i>830</i>	<i>846</i>	<i>841</i>	<i>831</i>	<i>765</i>	<i>-7.9%</i>	<i>-7.8%</i>
NWGC Total:	849	889	903	917	855	-6.8%	0.7%

* Phasing-Out program

Enrollment by Department and Program Other Academic Unit

	FALL 2008	FALL 2009	FALL 2010	FALL 2011	FALL 2012	1-YEAR CHANGE	5-YEAR CHANGE
ENROLLMENT							
NJCSTM							
Biotechnology (GR)	24	26	24	38	30	-21.1%	25.0%
Instr Curr Sci Tech (GR)	0	0	0	18	12	-33.3%	
Science & Tech. (UG)	105	106	88	104	99	-4.8%	-5.7%
Science & Tech. (GR)	4	5	4	5	2	-60.0%	-50.0%
NJCSTM Total:	133	137	116	165	143	-13.3%	7.5%
<i>OthAcad UG Total:</i>	<i>105</i>	<i>106</i>	<i>88</i>	<i>104</i>	<i>99</i>	<i>-4.8%</i>	<i>-5.7%</i>
<i>OthAcad GR Total:</i>	<i>28</i>	<i>31</i>	<i>28</i>	<i>61</i>	<i>44</i>	<i>-27.9%</i>	<i>57.1%</i>
OthAcad Total:	133	137	116	165	143	-13.3%	7.5%

Second Majors by Program

	FALL 2008	FALL 2009	FALL 2010	FALL 2011	FALL 2012	1-YEAR CHANGE	5-YEAR CHANGE
ENROLLMENT							
Psychology	143	145	151	213	202	-5.2%	41.3%
English	191	271	215	162	112	-30.9%	-41.4%
Earth Science	68	78	78	83	73	-12.0%	7.4%
Spanish	41	57	50	71	73	2.8%	78.0%
History	95	163	156	104	63	-39.4%	-33.7%
Math. Science	69	83	63	58	44	-24.1%	-36.2%
Biology	19	24	30	29	24	-17.2%	26.3%
Sociology	29	28	26	33	20	-39.4%	-31.0%
Communication	11	12	11	11	10	-9.1%	-9.1%
Economics	11	17	13	6	8	33.3%	-27.3%
Criminal Justice	1	6	7	9	6	-33.3%	500.0%
Political Science	7	7	3	3	5	66.7%	-28.6%
Art History	1	2	4	2	4	100.0%	300.0%
Fine Arts	16	25	27	12	3	-75.0%	-81.3%
Computer Science	1	1	1	4	2	-50.0%	100.0%
Asian Studies	0	0	0	3	2	-33.3%	
Chemistry	1	1	1	0	2		100.0%
Finance	8	4	4	2	1	-50.0%	-87.5%
Management Sci.	2	2	1	2	1	-50.0%	-50.0%
Marketing	0	1	0	1	1	0.0%	
Philosophy and Religion	4	3	2	1	1	0.0%	-75.0%
Public Admin.	1	4	3	1	1	0.0%	0.0%
Accounting	0	0	2	1	1	0.0%	
Educator of Indivs with Disabilities	1	0	0	0	1		0.0%
Earth Science - BS	0	0	0	0	1		
Sustainability Science	0	0	0	0	1		
Interior Design	0	0	1	0	1		
Visual Comm	0	0	1	2	0		
Theatre	1	0	2	1	0		
Studio Art	0	1	0	1	0		
Graphic Comm	1	0	0	1	0		
Electronics Tech.	0	1	1	0	0		
Biology-BS	0	2	4	0	0		
Tech.Edu.	1	0	0	0	0		
Recreation Admin.	0	1	1	0	0		
Physical Edu	1	0	0	0	0		
Media Film	4	3	0	0	0		
Music	0	3	0	0	0		
Second Majors Total	728	945	858	816	663	-18.8%	-8.9%

Course FTE by Department and Academic Level

College of Business and Public Administration

	FALL 2008	FALL 2009	FALL 2010	FALL 2011	FALL 2012	1-YEAR CHANGE	5-YEAR CHANGE
COURSE FTE							
Accounting/Finance	380.9	421.2	481.1	480.1	451.6	-5.9%	18.6%
ACCT (UG)	202.7	228.0	236.8	252.0	232.5	-7.7%	14.7%
ACCT (GR)	44.5	49.0	45.3	35.3	22.3	-36.9%	-50.0%
BLAW (UG)			60.4	73.9	63.0	-14.7%	
FIN (UG)	127.7	141.2	134.4	116.4	131.6	13.0%	3.1%
FIN (GR)	6.0	3.0	4.3	2.5	2.3	-10.0%	-62.5%
CrimJust/PubAdm	379.9	414.9	479.4	481.2	498.1	3.5%	31.1%
CJ (UG)	201.9	232.8	275.6	263.9	280.6	6.3%	38.9%
CJ (GR)	3.8	1.8	3.5	2.3	7.3	222.2%	93.3%
ID (UG)	1.7	2.4		3.9	3.8	-4.8%	122.2%
ID (GR)				2.0			
PA (UG)	88.6	90.9	106.3	107.8	106.5	-1.2%	20.3%
PA (GR)	84.0	87.0	94.0	101.3	100.0	-1.2%	19.0%
Mgmt/Marketing	549.2	541.9	482.1	472.3	470.8	-0.3%	-14.3%
MGS (UG)	388.5	381.4	297.8	293.1	296.6	1.2%	-23.7%
MGS (GR)	15.5	18.0	12.8	7.8	10.3	32.3%	-33.9%
MKT (UG)	140.4	136.5	167.1	165.0	159.8	-3.2%	13.8%
MKT (GR)	4.8	6.0	4.5	6.5	4.3	-34.6%	-10.5%
<i>BPM UG Total:</i>	<i>1,151.5</i>	<i>1,213.3</i>	<i>1,278.3</i>	<i>1,276.1</i>	<i>1,274.3</i>	<i>-0.1%</i>	<i>10.7%</i>
<i>BPM GR Total:</i>	<i>158.5</i>	<i>164.8</i>	<i>164.3</i>	<i>157.5</i>	<i>146.3</i>	<i>-7.1%</i>	<i>-7.7%</i>
BPM Total:	1,310.0	1,378.0	1,442.6	1,433.6	1,420.5	-0.9%	8.4%

Course FTE by Department and Academic Level College of Education

	FALL 2008	FALL 2009	FALL 2010	FALL 2011	FALL 2012	1-YEAR CHANGE	5-YEAR CHANGE
COURSE FTE							
Comm Disorder/Deaf	184.1	210.4	247.9	273.3	229.2	-16.1%	24.5%
CDD (UG)	74.8	97.8	124.3	151.3	140.4	-7.1%	87.7%
CDD (GR)	109.3	112.6	123.6	122.0	88.8	-27.3%	-18.8%
CurriculumTeaching	607.9	657.3	663.7	593.5	544.5	-8.3%	-10.4%
EC (UG)	99.3	75.9	77.4	68.4	71.3	4.1%	-28.2%
EC (GR)	26.8	22.8	21.0	16.4	12.5	-23.9%	-53.3%
EDUC (UG)	57.9	57.9	58.9	60.4	51.0	-15.5%	-12.0%
EMSE (UG)	208.8	264.8	268.7	243.0	229.3	-5.6%	9.8%
EMSE (GR)	132.3	141.0	120.0	99.0	86.5	-12.6%	-34.6%
ID (UG)	82.9	94.9	117.8	106.3	93.9	-11.6%	13.3%
Global Edu Innovation	180.4	155.8	154.7	146.4	111.6	-23.8%	-38.1%
CHIN (UG)	4.7	5.8	4.7	5.1	3.4	-33.3%	-28.0%
FL (UG)	3.0	3.8	3.9	8.3			
FREN (UG)	6.8	5.4	9.0	9.0	5.8	-35.4%	-13.9%
GERM (UG)	3.8	1.1	3.0	2.3	2.3	0.0%	-40.0%
ITAL (UG)	16.3	4.3	8.1	6.4	5.3	-17.6%	-67.8%
PORT (UG)	11.1	6.6	8.1	7.5	8.6	15.0%	-22.0%
SPAN (UG)	133.3	128.8	117.9	108.0	86.3	-20.1%	-35.3%
SPAN (GR)	1.5						
Phys Ed/Rec/Health	672.9	767.3	891.2	961.3	908.8	-5.5%	35.1%
GERO (UG)		0.2					
HED (UG)	198.6	232.3	288.6	306.9	303.6	-1.1%	52.9%
HED (GR)		4.0	3.5	3.5	3.3	-7.1%	
ID (UG)	174.9	173.3	210.4	238.3	189.4	-20.5%	8.3%
PED (UG)	233.4	286.9	309.2	309.4	318.5	2.9%	36.5%
PED (GR)	11.0	9.0	6.8	9.8	12.0	23.1%	9.1%
REC (UG)	55.0	61.6	72.8	93.4	82.1	-12.0%	49.3%
Special Edu/Literacy	491.2	530.9	584.4	525.4	494.9	-5.8%	0.8%
CS (UG)	116.6	110.1	101.1	98.6	79.1	-19.8%	-32.2%
CS (GR)	39.3	36.5	23.0	16.8	14.5	-13.4%	-63.1%
EDUC (UG)	54.9	58.1	55.7	59.3	59.1	-0.3%	7.5%
ID (UG)	70.3	89.6	123.0	106.3	101.1	-4.9%	43.7%
LM (UG)	0.2						
SPED (UG)	54.1	76.6	101.6	102.4	118.1	15.3%	118.2%
SPED (GR)	155.8	160.0	180.0	142.0	123.0	-13.4%	-21.0%
<i>EDU UG Total:</i>	<i>1,660.6</i>	<i>1,835.8</i>	<i>2,064.0</i>	<i>2,090.4</i>	<i>1,948.4</i>	<i>-6.8%</i>	<i>17.3%</i>
<i>EDU GR Total:</i>	<i>475.8</i>	<i>486.0</i>	<i>477.9</i>	<i>409.4</i>	<i>340.5</i>	<i>-16.8%</i>	<i>-28.4%</i>
EDU Total:	2,136.4	2,321.8	2,541.9	2,499.9	2,288.9	-8.4%	7.1%

Course FTE by Department and Academic Level

College of Humanities and Social Sciences

	FALL 2008	FALL 2009	FALL 2010	FALL 2011	FALL 2012	1-YEAR CHANGE	5-YEAR CHANGE
COURSE FTE							
Communication	425.7	458.3	542.4	645.0	613.9	-4.8%	44.2%
COMM (UG)	314.9	330.5	398.9	520.3	569.5	9.5%	80.8%
COMM (GR)	15.0	9.5	19.0	15.8	12.8	-19.0%	-15.0%
FILM (UG)	31.1	41.9	52.9	31.1			
ID (UG)	8.8	12.9	9.4	22.7	31.7	39.7%	259.6%
MED (UG)	55.8	63.5	62.3	55.1			
English	964.6	1,069.7	1,148.7	1,146.5	1,028.2	-10.3%	6.6%
ENG (UG)	883.3	983.8	1,045.5	1,029.9	937.3	-9.0%	6.1%
ENG (GR)	14.4	13.7	20.5	25.8	18.2	-29.7%	26.0%
ESL (UG)	57.6	64.1	62.8	76.1	54.4	-28.6%	-5.5%
ID (UG)	9.4	8.1	19.9	14.6	18.4	25.6%	96.0%
Gen Studies	345.8	361.5	410.4	426.6	443.8	4.0%	28.3%
GE (UG)	202.4	206.8	238.9	250.1	239.6	-4.2%	18.4%
PHIL (UG)	120.9	134.8	145.5	156.2	177.9	13.9%	47.1%
REL (UG)	22.5	19.9	26.1	20.3	26.3	29.6%	16.7%
History	442.1	512.6	567.6	513.6	465.0	-9.5%	5.2%
AS (UG)					4.9		
HIST (UG)	442.1	512.6	567.6	513.6	460.1	-10.4%	4.1%
Psychology	748.3	859.5	877.0	969.9	996.7	2.8%	33.2%
ID (GR)	5.0	5.8	5.5	6.5	6.8	3.8%	35.0%
PSRT (UG)	10.1	12.0	16.9	19.5	31.5	61.5%	211.1%
PSRT (GR)		0.5	0.3				
PSY (UG)	658.4	770.1	777.8	878.7	885.9	0.8%	34.6%
PSY (GR)	74.8	71.2	76.7	65.3	72.5	11.1%	-3.0%
Social Sciences	757.9	815.1	842.6	833.3	723.1	-13.2%	-4.6%
ANTH (UG)	38.3	36.9	33.8	39.6	35.3	-10.9%	-7.8%
ECO (UG)	199.9	221.4	210.4	182.8	175.5	-4.0%	-12.2%
ECO (GR)		4.3	6.3		2.0		
PS (UG)	163.7	152.1	162.0	192.2	139.5	-27.4%	-14.8%
PS (GR)	9.0	5.0	8.5	6.3	4.5	-28.0%	-50.0%
SOC (UG)	337.9	381.2	405.8	394.7	343.3	-13.0%	1.6%
SOC (GR)	9.3	14.3	16.0	17.8	23.0	29.6%	148.6%
Social Work	88.6	79.1	42.9				
SW (UG)	88.6	79.1	42.9				
<i>HSS UG Total:</i>	<i>3,645.5</i>	<i>4,031.7</i>	<i>4,279.1</i>	<i>4,397.5</i>	<i>4,131.1</i>	<i>-6.1%</i>	<i>13.3%</i>
<i>HSS GR Total:</i>	<i>127.4</i>	<i>124.1</i>	<i>152.7</i>	<i>137.3</i>	<i>139.7</i>	<i>1.7%</i>	<i>9.6%</i>
HSS Total:	3,772.9	4,155.7	4,431.7	4,534.8	4,270.7	-5.8%	13.2%

Course FTE by Department and Academic Level College of Natural, Applied, and Health Sciences

	FALL 2008	FALL 2009	FALL 2010	FALL 2011	FALL 2012	1-YEAR CHANGE	5-YEAR CHANGE
COURSE FTE							
Computer Science	244.3	273.3	298.4	290.2	254.5	-12.3%	4.2%
CPS (UG)	174.4	203.1	227.4	214.8	181.4	-15.5%	4.0%
CPS (GR)	1.0	2.5	2.8	4.4	6.4	45.3%	541.7%
ID (UG)	45.2	41.8	39.0	34.7	33.0	-4.9%	-27.0%
TECH (UG)	23.6	25.8	29.3	36.3	33.6	-7.4%	42.3%
Env & Life Sci				3.5	19.3	450.0%	
BIOS (UG)					18.5		
SELS (UG)				3.5	0.8	-78.6%	
Mathematics	694.9	652.3	753.4	732.7	708.4	-3.3%	2.0%
MATH (UG)	683.4	635.8	736.2	719.9	695.7	-3.4%	1.8%
MATH (GR)	11.5	16.5	17.3	12.8	12.8	0.0%	10.9%
Natural Sciences	717.7	800.3	867.3	906.2	901.7	-0.5%	25.6%
ASTR (UG)	25.5	28.0	34.8	27.3	27.0	-0.9%	5.9%
BIO (UG)	353.1	410.0	433.4	452.4	466.4	3.1%	32.1%
CHEM (UG)	140.7	146.3	161.6	175.1	180.1	2.9%	28.0%
CHEM (GR)	0.8		0.3	2.6	1.0	-61.3%	33.3%
ES (UG)	38.3	52.9	52.8	53.8	52.6	-2.1%	37.4%
GEOG (UG)	37.1	34.3	33.2	33.2	33.6	1.1%	-9.6%
GEOL (UG)	34.3	35.3	33.8	45.3	35.3	-22.1%	2.9%
GEOS (UG)					3.5		
ID (UG)	6.6	5.6	4.7	6.6	2.8	-57.1%	-57.1%
METR (UG)	32.6	31.3	42.3	39.8	27.2	-31.6%	-16.7%
OCEN (UG)	5.5	10.8	10.0	11.3	9.0	-20.0%	63.6%
PHYS (UG)	43.3	45.9	60.6	59.2	63.3	6.9%	46.2%
Nursing	127.0	129.4	148.3	170.4	182.9	7.3%	44.0%
NURS (UG)	84.4	85.1	107.3	126.2	140.5	11.3%	66.5%
NURS (GR)	42.7	44.2	41.0	44.3	42.4	-4.1%	-0.6%
Sustainability Studies		1.5	3.4	10.5	19.4	85.1%	
SUST (UG)		1.5	3.4	10.5	19.4	85.1%	
<i>NAHS UG Total:</i>	<i>1,727.9</i>	<i>1,793.4</i>	<i>2,009.5</i>	<i>2,049.5</i>	<i>2,023.6</i>	<i>-1.3%</i>	<i>17.1%</i>
<i>NAHS GR Total:</i>	<i>55.9</i>	<i>63.2</i>	<i>61.3</i>	<i>64.0</i>	<i>62.6</i>	<i>-2.2%</i>	<i>11.9%</i>
NAHS Total:	1,783.9	1,856.7	2,070.8	2,113.5	2,086.2	-1.3%	16.9%

Course FTE by Department and Academic Level

College of Visual and Performing Arts

	FALL 2008	FALL 2009	FALL 2010	FALL 2011	FALL 2012	1-YEAR CHANGE	5-YEAR CHANGE
COURSE FTE							
Design	199.5	198.9	216.4	235.9	251.2	6.5%	25.9%
DSN (UG)	28.7	30.9	41.8	63.8	47.1	-26.2%	64.1%
GCOM (UG)	34.9	27.4	23.6	10.9	3.6	-67.2%	-89.8%
GCOM (GR)	9.0	9.5	7.0	5.3	5.0	-4.8%	-44.4%
GD (UG)					96.2		
ID (UG)	12.9	11.4	19.5	21.0	21.2	0.9%	63.8%
IND (UG)	14.1	19.1	19.9	21.9	23.4	6.8%	66.7%
INTD (UG)	50.8	35.4	40.5	33.9	54.8	61.3%	7.7%
VC (UG)	49.1	65.1	64.1	79.1			
Fine Arts	383.4	377.7	377.0	412.5	352.9	-14.5%	-8.0%
AH (UG)	125.8	108.8	110.1	116.3	116.8	0.5%	-7.2%
AH (GR)		0.8		0.3			
FA (UG)	234.3	247.3	249.1	277.6	223.0	-19.7%	-4.8%
FA (GR)	23.3	21.0	17.8	18.4	13.1	-29.0%	-43.9%
Music	163.1	160.3	161.8	206.6	166.6	-19.3%	2.1%
MUS (UG)	163.1	160.3	161.8	206.6	166.6	-19.3%	2.1%
Theatre	66.4	80.3	84.4	83.2	94.3	13.5%	42.0%
DANC (UG)				5.8	6.4	9.7%	
ID (UG)	0.5	0.8	0.8	2.8	2.9	2.2%	475.0%
THE (UG)	65.9	79.5	83.6	74.5	85.1	14.2%	29.1%
VPA Other	4.5	3.0	1.0	1.0	0.8	-25.0%	-83.3%
MALS (GR)	4.5	3.0	1.0	1.0	0.8	-25.0%	-83.3%
<i>VPA UG Total:</i>	<i>780.1</i>	<i>786.0</i>	<i>814.8</i>	<i>914.3</i>	<i>847.0</i>	<i>-7.4%</i>	<i>8.6%</i>
<i>VPA GR Total:</i>	<i>36.8</i>	<i>34.2</i>	<i>25.8</i>	<i>24.9</i>	<i>18.8</i>	<i>-24.4%</i>	<i>-48.9%</i>
VPA Total:	817.0	820.2	840.6	939.2	865.8	-7.8%	6.0%

Course FTE by Department and Academic Level Nathan Weiss Graduate College

	FALL 2008	FALL 2009	FALL 2010	FALL 2011	FALL 2012	1-YEAR CHANGE	5-YEAR CHANGE
COURSE FTE							
Adv Stu Psyc		11.7	16.8	51.8	54.7	5.6%	
PSYD (GR)		11.7	16.8	51.8	54.7	5.6%	
Counselor Edu	111.5	122.5	154.3	157.5	153.5	-2.5%	37.7%
CED (GR)	111.5	122.5	154.3	157.5	153.5	-2.5%	37.7%
Edu Leadership	173.5	155.3	152.5	139.2	109.4	-21.4%	-36.9%
EDD (GR)	9.5	16.5	24.8	25.7	23.2	-9.7%	143.9%
EL (GR)	164.0	138.8	127.8	113.5	86.3	-24.0%	-47.4%
Grad Mgmt Studies	50.3	47.0	47.3	35.0	26.5	-24.3%	-47.3%
GMBA (GR)	42.0	45.3	47.3	35.0	26.5	-24.3%	-36.9%
MIS (GR)	8.3	1.8					
NWGC Other	21.1	23.6	25.5	27.5	38.1	38.4%	80.2%
ID (UG)	11.6	14.8	18.8	24.8	34.3	38.6%	195.2%
MAHG (GR)	9.5	8.8	6.8	2.8	3.8	36.4%	-60.5%
Occupational Therapy - GR	75.4	79.8	76.9	91.0	90.7	-0.3%	20.3%
OT (UG)	6.2	10.6	3.7	12.5	11.8	-5.5%	90.9%
OT (GR)	69.3	69.3	73.2	78.5	78.9	0.5%	14.0%
Social Work - Graduate	97.9	130.8	134.6	154.5	126.4	-18.2%	29.1%
SW (GR)	97.9	130.8	134.6	154.5	126.4	-18.2%	29.1%
<i>NWGC UG Total:</i>	<i>17.8</i>	<i>25.4</i>	<i>22.4</i>	<i>37.3</i>	<i>46.1</i>	<i>23.8%</i>	<i>158.9%</i>
<i>NWGC GR Total:</i>	<i>511.9</i>	<i>545.2</i>	<i>585.3</i>	<i>619.2</i>	<i>553.2</i>	<i>-10.7%</i>	<i>8.1%</i>
NWGC Total:	529.7	570.5	607.8	656.5	599.4	-8.7%	13.1%

Course FTE by Department and Academic Level Other Academic Unit

	FALL 2008	FALL 2009	FALL 2010	FALL 2011	FALL 2012	1-YEAR CHANGE	5-YEAR CHANGE
COURSE FTE							
NJCSTM	64.6	72.0	79.3	72.6	79.9	10.0%	23.7%
BIO (GR)	7.7	7.0	10.9	17.7	13.7	-22.6%	78.3%
ID (UG)		0.3					
ID (GR)	9.5	19.8	21.5	0.8	1.3	66.7%	-86.8%
STE (GR)	3.3	3.5		4.0			
STME (UG)	28.0	26.6	28.8	36.4	46.4	27.5%	65.6%
STME (GR)	16.2	14.8	18.2	13.8	18.6	34.3%	14.9%
<i>OthAcad UG Total:</i>	<i>28.0</i>	<i>26.9</i>	<i>28.8</i>	<i>36.4</i>	<i>46.4</i>	<i>27.5%</i>	<i>65.6%</i>
<i>OthAcad GR Total:</i>	<i>36.6</i>	<i>45.1</i>	<i>50.6</i>	<i>36.3</i>	<i>33.5</i>	<i>-7.6%</i>	<i>-8.4%</i>
OthAcad Total:	64.6	72.0	79.3	72.6	79.9	10.0%	23.7%

Course FTE by Department and Academic Level Other Courses

	FALL 2008	FALL 2009	FALL 2010	FALL 2011	FALL 2012	1-YEAR CHANGE	5-YEAR CHANGE
COURSE FTE							
Other				17.0	13.0	-23.5%	
ID (GR)				17.0	13.0	-23.5%	
<i>Other GR Total:</i>				<i>17.0</i>	<i>13.0</i>	<i>-23.5%</i>	
Other Total:				17.0	13.0	-23.5%	



Kean University - Degree Conferred



Degrees Conferred

Page 26	At-a-Glance
Page 28	Degrees Conferred by Department and Program College of Business and Public Administration
Page 29	Degrees Conferred by Department and Program College of Education
Page 30	Degrees Conferred by Department and Program College of Humanities and Social Sciences
Page 31	Degrees Conferred by Department and Program College of Natural, Applied, and Health Sciences
Page 32	Degrees Conferred by Department and Program College of Visual and Performing Arts
Page 33	Degrees Conferred by Department and Program Nathan Weiss Graduate College
Page 34	Degrees Conferred by Department and Program Other Academic Unit

Degrees Conferred, Fiscal Year 2011 - 2012

	TOTAL		BACHELOR		MASTER		POSTM DIPLOMA		DOCTOR	
	No.	%	No.	%	No.	%	No.	%	No.	%
DEGREE LEVEL										
Undergraduate	2,569	77.4%	2,569	100.0%						
Graduate	749	22.6%			720	100.0%	21	100.0%	8	100.0%
GENDER										
Male	1,118	33.7%	950	37.0%	162	22.5%	1	4.8%	5	62.5%
Female	2,200	66.3%	1,619	63.0%	558	77.5%	20	95.2%	3	37.5%
RACE / ETHNICITY										
Black	536	16.2%	408	15.9%	126	17.5%			2	25.0%
Hispanic	623	18.8%	520	20.2%	98	13.6%	4	19.0%	1	12.5%
Asian	270	8.1%	214	8.3%	56	7.8%				
White	1,751	52.8%	1,299	50.6%	430	59.7%	17	81.0%	5	62.5%
MultiRace	29	0.9%	27	1.1%	2	0.3%				
Not Reported	109	3.3%	101	3.9%	8	1.1%				
COLLEGE										
BPA	767	23.1%	689	26.8%	78	10.8%				
EDU	712	21.5%	531	20.7%	181	25.1%				
HSS	930	28.0%	842	32.8%	86	11.9%	2	9.5%		
NAHS	396	11.9%	349	13.6%	47	6.5%				
NWGC	303	9.1%	0	0.0%	276	38.3%	19	90.5%	8	100.0%
VPA	153	4.6%	137	5.3%	16	2.2%				
Other Academic Unit	57	1.7%	21	0.8%	36	5.0%				

* Fiscal Year includes degrees conferred between July 1 and June 30.

Top 10 Bachelor's Degrees Conferred

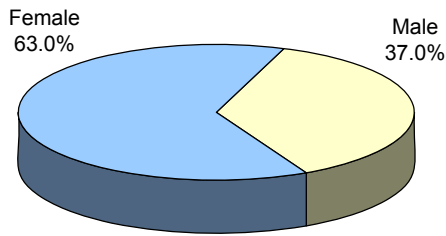
Psychology	342
Management Science	207
Criminal Justice	152
Accounting	145
English	131
Elementary Education	130
Physical Education	112
Nursing	110
Educator of Individuals with Disabilities	104
History	98

Top 10 Master's Degrees Conferred

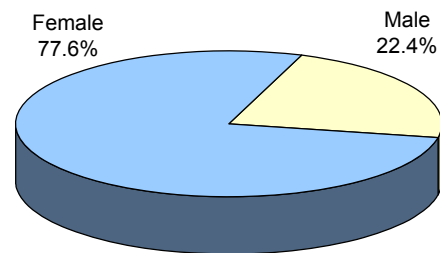
Counselor Education	85
Educational Administration	68
Social Work	57
Instruction & Curriculum	51
Special Education	51
Speech Language Pathology	45
Public Administration	44
Global MBA	38
Nursing	37
Accounting	34

Additional information is available online at <http://ir.kean.edu>.

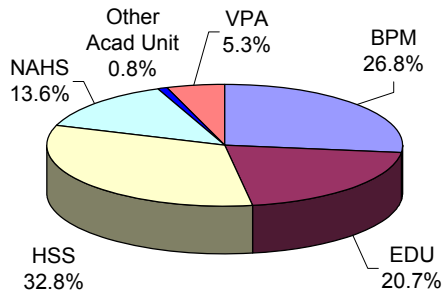
**BACHELOR'S DEGREES
By Gender**



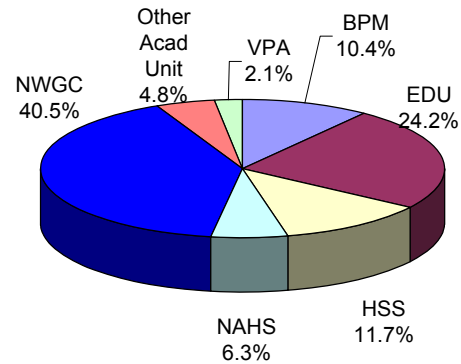
**GRADUATE DEGREES
(Master, Diploma, Doctor)
By Gender**



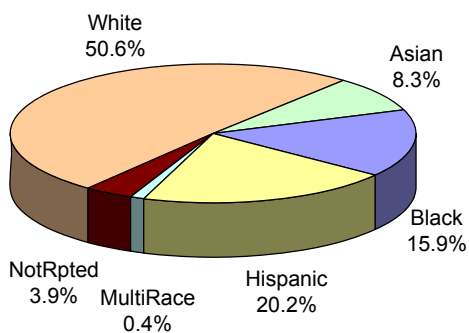
**BACHELOR'S DEGREES
By College**



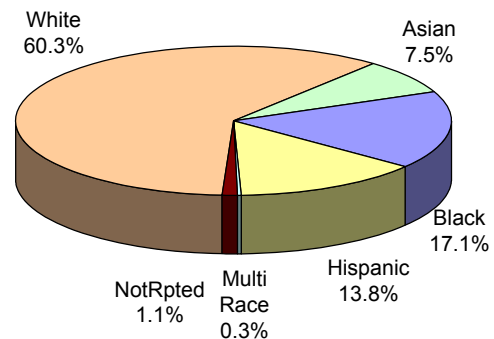
**GRADUATE DEGREES
(Master, Diploma, Doctor)
By College**



**BACHELOR'S DEGREES
By Race/Ethnicity**



**GRADUATE DEGREES
(Master, Diploma, Doctor)
By Race/Ethnicity**



Degrees Conferred by Department and Program College of Business and Public Administration

	FISCAL Yr 2007-08	FISCAL Yr 2008-09	FISCAL Yr 2009-10	FISCAL Yr 2010-11	FISCAL Yr 2011-12	1-YEAR CHANGE	5-YEAR CHANGE
DEGREES CONFERRED							
Accounting/Finance							
Accounting (UG)	92	129	145	164	145	-11.6%	57.6%
Accounting (GR)	40	32	45	44	34	-22.7%	-15.0%
Finance (UG)	48	53	60	71	55	-22.5%	14.6%
Accounting/Finance Total:	180	214	250	279	234	-16.1%	30.0%
CrimJust/PubAdm							
Criminal Justice (UG)	81	133	127	132	152	15.2%	87.7%
Public Admin. (UG)	21	30	36	21	36	71.4%	71.4%
Public Admin. (GR)	46	53	43	41	44	7.3%	-4.3%
CrimJust/PubAdm Total:	148	216	206	194	232	19.6%	56.8%
Mgmt/Marketing							
Management Sci. (UG)	194	200	250	229	207	-9.6%	6.7%
Marketing (UG)	70	84	83	100	94	-6.0%	34.3%
Mgmt/Marketing Total:	264	284	333	329	301	-8.5%	14.0%
<i>BPM UG Total:</i>	<i>506</i>	<i>629</i>	<i>701</i>	<i>717</i>	<i>689</i>	<i>-3.9%</i>	<i>36.2%</i>
<i>BPM GR Total:</i>	<i>86</i>	<i>85</i>	<i>88</i>	<i>85</i>	<i>78</i>	<i>-8.2%</i>	<i>-9.3%</i>
BPM Total:	592	714	789	802	767	-4.4%	29.6%

Degrees Conferred by Department and Program College of Education

Degrees Conferred

	FISCAL Yr 2007-08	FISCAL Yr 2008-09	FISCAL Yr 2009-10	FISCAL Yr 2010-11	FISCAL Yr 2011-12	1-YEAR CHANGE	5-YEAR CHANGE
DEGREES CONFERRED							
Comm Disorder/Deaf							
Speech Lang. Pathology (GR)	29	42	40	42	45	7.1%	55.2%
Speech, Lang Hear. Sci. (UG)	37	33	51	45	50	11.1%	35.1%
Comm Disorder/Deaf Total:	66	75	91	87	95	9.2%	43.9%
Curriculum Teaching							
Early Childhood Edu. (UG)	101	107	74	71	63	-11.3%	-37.6%
Early Childhood Edu. (GR)	19	25	15	11	15	36.4%	-21.1%
Elem/Mid/Sec Edu (UG)	106	106	178	136	130	-4.4%	22.6%
Instruction & Curriculum (GR)	70	58	72	80	51	-36.3%	-27.1%
Curriculum Teaching Total:	296	296	339	298	259	-13.1%	-12.5%
Global Edu Innovation							
Spanish (UG)	70	52	41	55	29	-47.3%	-58.6%
Global Edu Innovation Total:	70	52	41	55	29	-47.3%	-58.6%
Phys Ed/Rec/Health							
Athletic Training (UG)	5	7	6	6	7	16.7%	40.0%
Exercise Science (GR)	3	1	6	1	2	100.0%	-33.3%
Physical Edu (UG)	60	73	89	116	112	-3.4%	86.7%
Recreation Admin. (UG)	18	27	23	21	36	71.4%	100.0%
Phys Ed/Rec/Health Total:	86	108	124	144	157	9.0%	82.6%
Special Edu/Literacy							
Edu/Media/Spec. (GR)	15	8	9	4	3	*	*
Educator of Indivs with Disabilities (UG)	37	50	66	106	104	-1.9%	181.1%
Reading Spec. (GR)	27	28	17	21	14	-33.3%	-48.1%
Special Edu (GR)	48	50	60	49	51	4.1%	6.3%
Special Edu/Literacy Total:	127	136	152	180	172	-4.4%	35.4%
<i>EDU UG Total:</i>	<i>434</i>	<i>455</i>	<i>528</i>	<i>556</i>	<i>531</i>	<i>-4.5%</i>	<i>22.4%</i>
<i>EDU GR Total:</i>	<i>211</i>	<i>212</i>	<i>219</i>	<i>208</i>	<i>181</i>	<i>-13.0%</i>	<i>-14.2%</i>
EDU Total:	645	667	747	764	712	-6.8%	10.4%

* Phasing-Out program

Degrees Conferred by Department and Program College of Humanities and Social Sciences

	FISCAL YR 2007-08	FISCAL YR 2008-09	FISCAL YR 2009-10	FISCAL YR 2010-11	FISCAL YR 2011-12	1-YEAR CHANGE	5-YEAR CHANGE
DEGREES CONFERRED							
Communication							
Communication (UG)	48	51	51	64	93	45.3%	93.8%
Communication Studies (GR)	5	9	8	10	8	-20.0%	60.0%
Media Film (UG)	33	20	41	43	34	-20.9%	3.0%
Communication Total:	86	80	100	117	135	15.4%	57.0%
English							
English (UG)	74	86	89	104	131	26.0%	77.0%
English Writing (GR)	0	0	0	2	2	0.0%	
English Total:	74	86	89	106	133	25.5%	79.7%
Gen Studies							
Philosophy and Religion (UG)	1	0	0	3	2	*	*
Gen Studies Total:	1	0	0	3	2	-33.3%	100.0%
History							
History (UG)	89	79	84	102	98	-3.9%	10.1%
Holocaust & Genocide (GR)	1	3	3	4	2	-50.0%	100.0%
History Total:	90	82	87	106	100	-5.7%	11.1%
Psychology							
Behavioral Sci (GR)	24	16	9	4	6	*	*
Edu Psych (GR)	14	11	10	18	33	*	*
Marri & Fam Therapy (GR)	8	9	4	5	2	-60.0%	-75.0%
Psych Rehab (UG)	7	8	13	10	15	50.0%	114.3%
Psychology (UG)	205	206	229	284	342	20.4%	66.8%
Psychology (GR)	0	0	14	14	18	28.6%	
Psychology Total:	258	250	279	335	416	24.2%	61.2%
Social Sciences							
Economics (UG)	13	21	30	13	19	46.2%	46.2%
Political Science (UG)	26	30	34	39	22	-43.6%	-15.4%
Political Science (GR)	7	8	4	1	11	1000.0%	57.1%
Soc/SocJust (GR)	0	0	0	7	6	-14.3%	
Sociology (UG)	44	65	80	90	82	-8.9%	86.4%
Social Sciences Total:	90	124	148	150	140	-6.7%	55.6%
Social Work							
Social Work (UG)	31	51	55	61	4	*	*
Social Work Total:	31	51	55	61	4	-93.4%	-87.1%
HSS UG Total:	571	617	706	813	842	3.6%	47.5%
HSS GR Total:	59	56	52	65	88	35.4%	49.2%
HSS Total:	630	673	758	878	930	5.9%	47.6%

* Phasing-Out program

Degrees Conferred by Department and Program College of Natural, Applied, and Health Sciences

Degrees Conferred

	FISCAL Yr 2007-08	FISCAL Yr 2008-09	FISCAL Yr 2009-10	FISCAL Yr 2010-11	FISCAL Yr 2011-12	1-YEAR CHANGE	5-YEAR CHANGE
DEGREES CONFERRED							
Computer Science							
Comp.Integrated Design & Mfg. Tech. (UG)	1	2	3	0	0	*	*
Computer Info. Systems (GR)	0	0	0	0	2		
Computer Science (UG)	22	18	16	14	27	92.9%	22.7%
Electronics Tech. (UG)	4	1	0	1	1	*	*
Information Technology (UG)	5	5	3	2	9	350.0%	80.0%
Computer Science Total:	32	26	22	17	39	129.4%	21.9%
Env & Life Sci							
Biology-BS (UG)	33	42	43	30	47	56.7%	42.4%
Earth Science - BS (UG)	6	7	6	8	8	0.0%	33.3%
Env & Life Sci Total:	39	49	49	38	55	44.7%	41.0%
Mathematics							
Comp/Stat/Math. (GR)	2	1	2	2	2	*	*
Math. Edu. (GR)	5	2	5	2	4	100.0%	-20.0%
Math. Science (UG)	26	42	43	50	53	6.0%	103.8%
Mathematics Total:	33	45	50	54	59	9.3%	78.8%
Natural Sciences							
Biology (UG)	38	32	52	48	65	35.4%	71.1%
Chemistry (UG)	10	14	15	12	4	-66.7%	-60.0%
Earth Science (UG)	10	2	7	5	10	100.0%	0.0%
HIM (UG)	22	8	10	9	7	-22.2%	-68.2%
Medical Tech. (UG)	4	2	10	7	8	14.3%	100.0%
Natural Sciences Total:	84	58	94	81	94	16.0%	11.9%
Nursing							
M.S.N./M.P.A. in Nursing (GR)	10	3	0	0	2	*	*
Nursing (UG)	59	69	72	94	110	17.0%	86.4%
Nursing (GR)	27	26	42	36	37	2.8%	37.0%
Nursing Total:	96	98	114	130	149	14.6%	55.2%
NAHS UG Total:	240	244	280	280	349	24.6%	45.4%
NAHS GR Total:	44	32	49	40	47	17.5%	6.8%
NAHS Total:	284	276	329	320	396	23.8%	39.4%

* Phasing-Out program

Degrees Conferred by Department and Program

College of Visual and Performing Arts

	FISCAL Yr 2007-08	FISCAL Yr 2008-09	FISCAL Yr 2009-10	FISCAL Yr 2010-11	FISCAL Yr 2011-12	1-YEAR CHANGE	5-YEAR CHANGE
DEGREES CONFERRED							
Design							
Graphic Comm (UG)	20	11	10	11	9	-18.2%	-55.0%
Graphic Comm (GR)	18	10	11	4	3	*	*
Industrial Design (UG)	5	3	3	9	14	55.6%	180.0%
Interior Design (UG)	24	25	25	35	31	-11.4%	29.2%
Visual Comm (UG)	38	25	27	23	36	56.5%	-5.3%
Design Total:	105	74	76	82	93	13.4%	-11.4%
Fine Arts							
Art History (UG)	4	3	7	3	4	33.3%	0.0%
Fine Arts (UG)	25	22	22	24	11	-54.2%	-56.0%
Fine Arts Edu (GR)	22	19	14	15	11	-26.7%	-50.0%
Studio Art (UG)	11	9	8	8	6	-25.0%	-45.5%
Fine Arts Total:	62	53	51	50	32	-36.0%	-48.4%
Music							
Music (UG)	5	6	11	4	3	-25.0%	-40.0%
Music Edu. (UG)	2	2	2	1	1	0.0%	-50.0%
Music Total:	7	8	13	5	4	-20.0%	-42.9%
Theatre							
Speech & Theatre (UG)	2	0	0	0	0	*	*
Theatre (UG)	7	9	11	11	16	45.5%	128.6%
Theatre Design & Tech. (UG)	2	1	2	1	2	100.0%	0.0%
Theatre Performance (UG)	2	4	5	2	4	100.0%	100.0%
Theatre Total:	13	14	18	14	22	57.1%	69.2%
VPA Other							
Liberal Studies (GR)	6	6	6	5	2	-60.0%	-66.7%
VPA Other Total:	6	6	6	5	2	-60.0%	-66.7%
<i>VPA UG Total:</i>	<i>147</i>	<i>120</i>	<i>133</i>	<i>132</i>	<i>137</i>	<i>3.8%</i>	<i>-6.8%</i>
<i>VPA GR Total:</i>	<i>46</i>	<i>35</i>	<i>31</i>	<i>24</i>	<i>16</i>	<i>-33.3%</i>	<i>-65.2%</i>
VPA Total:	193	155	164	156	153	-1.9%	-20.7%

* Phasing-Out program

Degrees Conferred by Department and Program Nathan Weiss Graduate College

Degrees Conferred

	FISCAL Yr 2007-08	FISCAL Yr 2008-09	FISCAL Yr 2009-10	FISCAL Yr 2010-11	FISCAL Yr 2011-12	1-YEAR CHANGE	5-YEAR CHANGE
DEGREES CONFERRED							
Adv Stu Psyc							
School Psychology (GR)	9	10	10	9	19	111.1%	111.1%
Adv Stu Psyc Total:	9	10	10	9	19	111.1%	111.1%
Counselor Edu							
Counselor Edu (GR)	46	56	46	64	85	32.8%	84.8%
Counselor Edu Total:	46	56	46	64	85	32.8%	84.8%
Edu Leadership							
EdD.Urban/Leader (GR_D)	0	0	0	0	8		
Edu Admin. (GR)	91	89	84	70	68	-2.9%	-25.3%
Edu Leadership Total:	91	89	84	70	76	8.6%	-16.5%
Grad Mgmt Studies							
MBA in Global Management (GR)	17	52	31	34	38	11.8%	123.5%
MIS (GR)	16	2	4	3	0	*	*
Grad Mgmt Studies Total:	33	54	35	37	38	2.7%	15.2%
Occupational Therapy - GR							
Occupational Therapy (GR)	18	29	29	31	28	-9.7%	55.6%
Occupational Therapy - GR Total:	18	29	29	31	28	-9.7%	55.6%
Social Work - Graduate							
Social Work (GR)	41	42	53	54	57	5.6%	39.0%
Social Work - Graduate Total:	41	42	53	54	57	5.6%	39.0%
<i>NWGC GR_D Total:</i>	<i>0</i>	<i>0</i>	<i>0</i>	<i>0</i>	<i>8</i>		
<i>NWGC GR Total:</i>	<i>238</i>	<i>280</i>	<i>257</i>	<i>265</i>	<i>295</i>	<i>11.3%</i>	<i>23.9%</i>
NWGC Total:	238	280	257	265	303	14.3%	27.3%

* Phasing-Out program

Degrees Conferred by Department and Program Other Academic Unit

	FISCAL Yr 2007-08	FISCAL Yr 2008-09	FISCAL Yr 2009-10	FISCAL Yr 2010-11	FISCAL Yr 2011-12	1-YEAR CHANGE	5-YEAR CHANGE
DEGREES CONFERRED							
NJCSTM							
Biotechnology (GR)	4	8	14	5	14	180.0%	250.0%
Instr Curr Sci Tech (GR)	0	0	0	0	17		
Science & Tech. (UG)	10	17	26	21	21	0.0%	110.0%
Science & Tech. (GR)	0	4	3	6	5	-16.7%	
NJCSTM Total:	14	29	43	32	57	78.1%	307.1%
<i>OthAcad UG Total:</i>	<i>10</i>	<i>17</i>	<i>26</i>	<i>21</i>	<i>21</i>	<i>0.0%</i>	<i>110.0%</i>
<i>OthAcad GR Total:</i>	<i>4</i>	<i>12</i>	<i>17</i>	<i>11</i>	<i>36</i>	<i>227.3%</i>	<i>800.0%</i>
OthAcad Total:	14	29	43	32	57	78.1%	307.1%



Kean University - Employees



Employees

Page 36

At-a-Glance

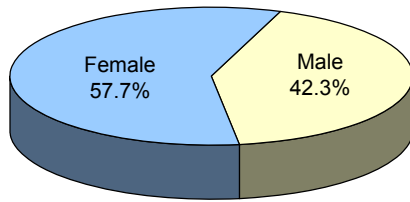
Fall 2012 Employee Demographics

	TOTAL		FACULTY		STAFF	
	TOTAL	%	#	%	#	%
TOTAL FULL-TIME	1,046	100.0%	344	100.0%	702	100.0%
GENDER						
Male	442	42.3%	168	48.8%	274	39.0%
Female	604	57.7%	176	51.2%	428	61.0%
RACE / ETHNICITY						
Black	202	19.3%	32	9.3%	170	24.2%
Hispanic	182	17.4%	23	6.7%	159	22.6%
Asian	92	8.8%	47	13.7%	45	6.4%
White	564	53.9%	241	70.1%	323	46.0%
Multi-race	2	0.2%			2	0.3%
Not Reported	4	0.4%	1	0.3%	3	0.4%
EMPLOYEE GROUP						
Faculty	344	32.9%	344	100.0%		
Administrative & Managerial	166	15.9%			166	23.6%
Professional & Support	376	35.9%			376	53.6%
Services	160	15.3%			160	22.8%
AGE						
< 30	55	5.3%	1	0.3%	54	7.7%
30 - 39	200	19.1%	39	11.3%	161	22.9%
40 - 49	241	23.0%	66	19.2%	175	24.9%
50 - 59	282	27.0%	98	28.5%	184	26.2%
60 - 69	214	20.5%	102	29.7%	112	16.0%
70 +	54	5.2%	38	11.0%	16	2.3%
Average Age	50	-	55	-	47	-
PART TIME EMPLOYEES	41	-	23	-	18	-
ADJUNCT FACULTY	1,114	-	1,114	-		

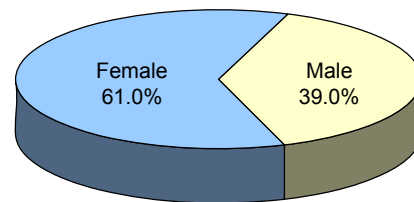
* Numbers represent full-time faculty and staff only, unless otherwise noted.

Additional information is available online at <http://ir.kean.edu>.

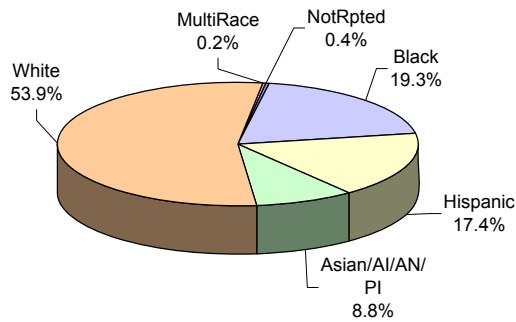
**FULL-TIME EMPLOYEES
By Gender**



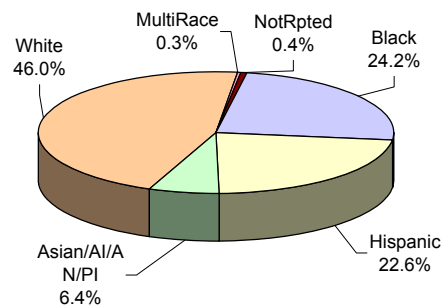
**FULL-TIME STAFF
By Gender**



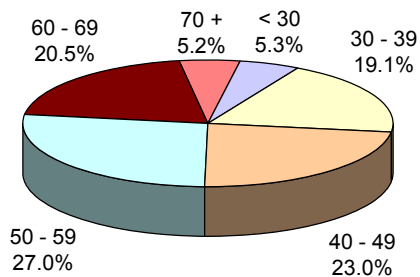
**FULL-TIME EMPLOYEES
By Race/Ethnicity**



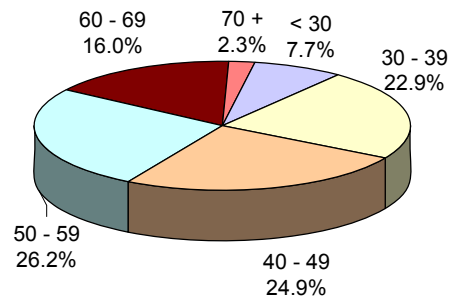
**FULL-TIME STAFF
By Race/Ethnicity**



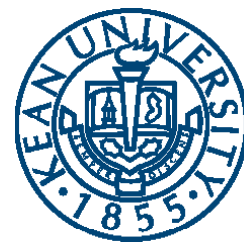
**FULL-TIME EMPLOYEES
By Age Group**



**FULL-TIME STAFF
By Age Group**



The charts for full-time faculty are located in the “Faculty” section.



Kean University – Faculty

Faculty

Page 40	At-a-Glance
Page 42	Faculty Trends
Page 44	Full-Time Faculty by Department College of Business and Public Administration
Page 45	Full-Time Faculty by Department College of Education
Page 46	Full-Time Faculty by Department College of Humanities and Social Sciences
Page 47	Full-Time Faculty by Department College of Natural, Applied, and Health Sciences
Page 48	Full-Time Faculty by Department College of Visual and Performing Arts
Page 49	Full-Time Faculty by Department Nathan Weiss Graduate College Ohter Academic Unit
Page 50	Distribution of Full-Time Faculty by Age



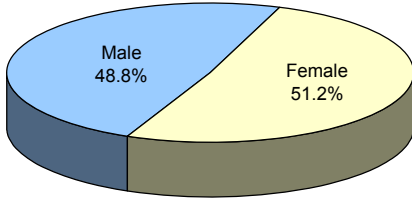
Fall 2012 Faculty Demographics

	UNIVERSITY		COLLEGES						
	TOTAL	%	BPA	EDU	HSS	NAHS	NWGC	VPA	OTHER ACAD
TOTAL FULL-TIME	344	100.0%	40	64	96	67	33	35	9
GENDER									
Male	168	48.8%	24	22	52	37	11	18	4
Female	176	51.2%	16	42	44	30	22	17	5
RACE / ETHNICITY									
Black	32	9.3%	4	6	10	6	4	2	0
Hispanic	23	6.7%	4	6	7	3	1	2	0
Asian	47	13.7%	11	3	8	18	3	1	3
White	241	70.1%	21	49	70	40	25	30	6
Not Reported	1	0.3%	0	0	1	0	0	0	0
TENURE STATUS									
Tenured	257	74.7%	27	52	79	51	13	31	4
Tenure Track	55	16.0%	10	6	7	8	18	2	4
Not on Tenure Track	32	9.3%	3	6	10	8	2	2	1
RANK									
Professor	106	30.8%	9	21	35	21	4	16	0
Associate Professor	84	24.4%	10	20	21	18	5	7	3
Assistant Professor	129	37.5%	19	17	31	24	23	10	5
Instructor	25	7.3%	2	6	9	4	1	2	1
EDUCATION									
Highest Degree									
Doctorate	282	82.0%	32	54	86	54	30	17	9
Master's	61	17.7%	8	10	10	12	3	18	0
Terminal Degree in Field	300	87.2%	34	55	88	54	31	29	9
AGE									
Average Age	55	-	53	60	57	53	51	53	40
Faculty >= 60	140	40.7%	14	41	47	19	10	9	0
PART-TIME FACULTY	23	-	0	23	0	0	0	0	0
ADJUNCT FACULTY	1114	-	98	282	380	152	39	160	3

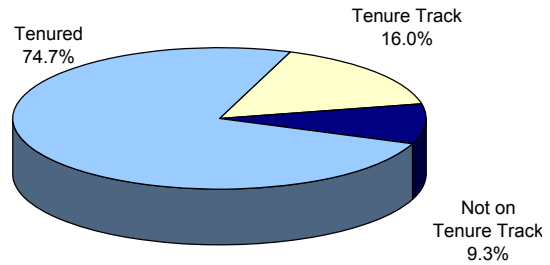
* Numbers represent full-time faculty only, unless otherwise noted.

Additional information is available online at <http://ir.kean.edu>.

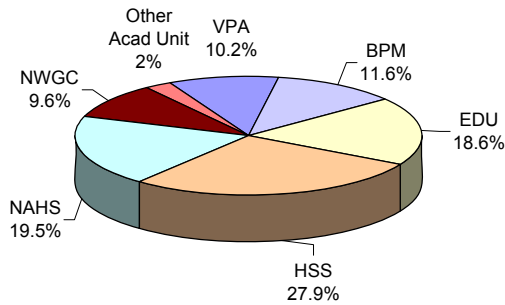
**FULL-TIME FACULTY
By Gender**



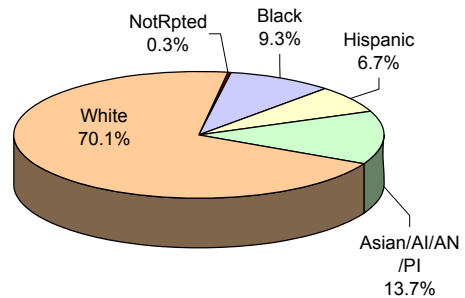
**FULL-TIME FACULTY
By Tenure Status**



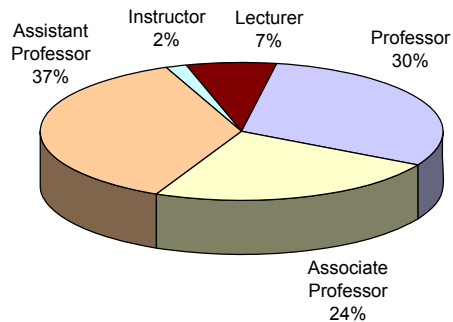
**FULL-TIME FACULTY
By College**



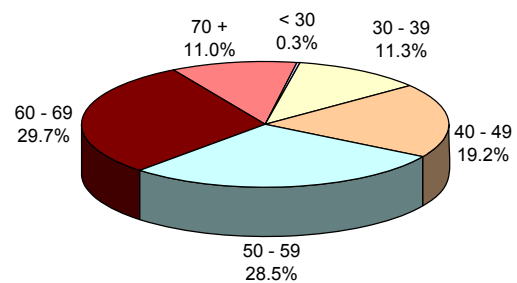
**FULL-TIME FACULTY
By Race/Ethnicity**



**FULL-TIME FACULTY
By Rank**



**FULL-TIME FACULTY
By Age Group**

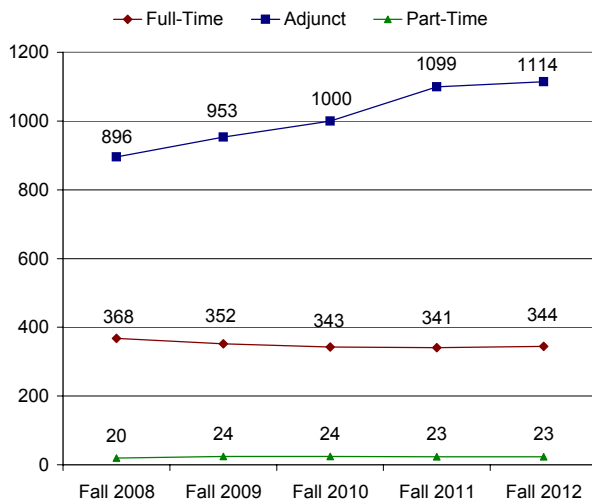


Faculty Trends (Fall 2008 - Fall 2012)

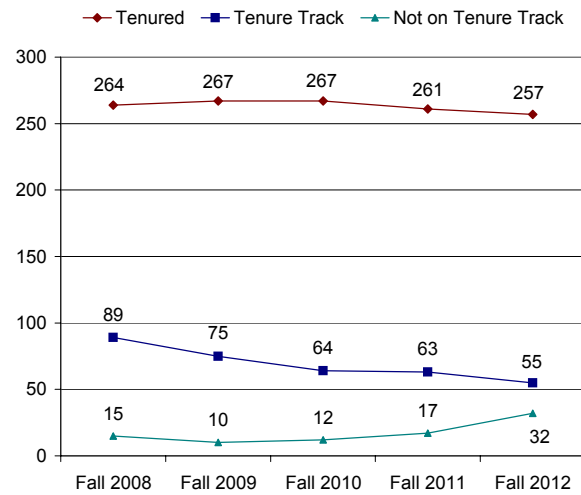
	FALL 2008	FALL 2009	Fall 2010	Fall 2011	Fall 2012	1-YEAR CHANGE	5-YEAR CHANGE
TOTAL FULL-TIME	368	352	343	341	344	0.9%	-6.5%
GENDER							
Male	201	189	179	172	168	-2.3%	-16.4%
Female	167	163	164	169	176	4.1%	5.4%
RACE / ETHNICITY							
Black	38	34	33	34	32	-5.9%	-15.8%
Hispanic	29	26	25	22	23	4.5%	-20.7%
Asian	40	39	39	44	46	4.5%	15.0%
White	260	252	245	240	241	0.4%	-7.3%
Not Reported	1	1	1	1	1	0.0%	0.0%
TENURE STATUS							
Tenured	264	267	267	261	257	-1.5%	-2.7%
Tenure Track	89	75	64	63	55	-12.7%	-38.2%
Not on Tenure Track	15	10	12	17	32	88.2%	113.3%
RANK							
Professor	138	130	123	113	106	-6.2%	-23.2%
Associate Professor	85	84	87	86	84	-2.3%	-1.2%
Assistant Professor	137	132	127	133	129	-3.0%	-5.8%
Instructor	8	6	6	0	0		-100.0%
Lecturer	0	0	0	9	25	177.8%	
EDUCATION							
Highest Degree							
Doctorate	313	302	292	293	282	-3.8%	-9.9%
Master's	55	50	50	48	61	27.1%	10.9%
Bachelor's	0	0	0	0	1		
Not Reported	0	0	1	0	0		
Terminal Degree in Field	333	323	313	310	300	-3.2%	-9.9%
AGE							
Average Age	55.22	55.77	55.89	55.53	55.45	-0.1%	0.4%
Faculty >= 60	153	155	150	143	140	-2.1%	-8.5%
PART-TIME FACULTY	20	24	24	23	23	0.0%	15.0%
ADJUNCT FACULTY	896	953	1,000	1,099	1,114	1.4%	24.3%

* Numbers represent full-time faculty only, unless otherwise noted.

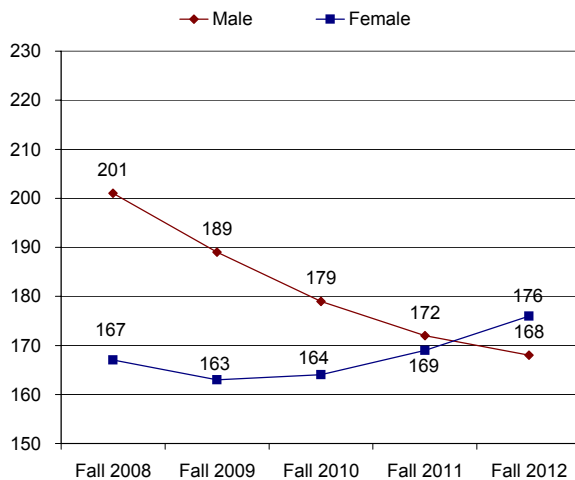
FACULTY HEADCOUNT Fall 2008 - Fall 2012



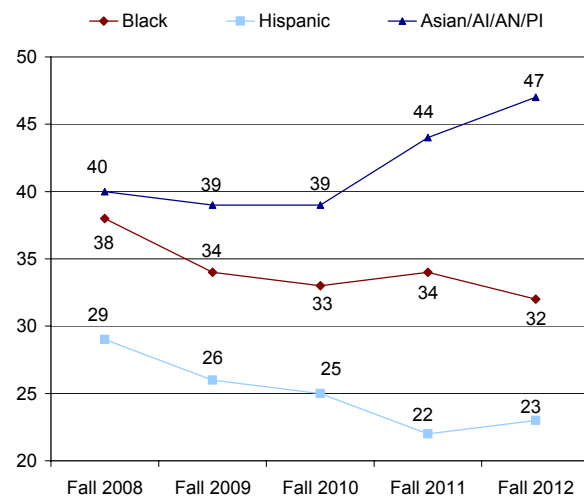
TENURE STATUS Fall 2008 - Fall 2012



GENDER Fall 2008 - Fall 2012



MINORITY FACULTY HEADCOUNT Fall 2008 - Fall 2012



Full-Time Faculty by Department College of Business and Public Administration

		FALL 2008	FALL 2009	FALL 2010	FALL 2011	FALL 2012	1-YEAR CHANGE	5-YEAR CHANGE
CrimJust/PubAdm	FT Faculty	14	14	13	14	14	0.0%	0.0%
	Student FTE	689.6	713.1	836.3	928.2	895.3	-3.5%	29.8%
	Course FTE	379.9	414.9	479.4	481.2	498.1	3.5%	31.1%
Accounting/Finance	FT Faculty	13	14	13	13	12	-7.7%	-7.7%
	Student FTE	602.7	668.9	671.5	666.3	606.8	-8.9%	0.7%
	Course FTE	380.9	421.2	481.1	480.1	451.6	-5.9%	18.6%
Mgmt/Marketing	FT Faculty	16	14	14	15	13	-13.3%	-18.8%
	Student FTE	862.8	966.0	946.0	977.1	930.8	-4.7%	7.9%
	Course FTE	549.2	541.9	482.1	472.3	470.8	-0.3%	-14.3%
BPM Other	FT Faculty	0	0	0	0	1		

* Faculty department is based on faculty's cost center in the HR data system.

* Student FTE = UG Enrolled Credits/16 + GR Enrolled Credits/12

Course FTE = (UG Section Credit * # of Students in the Section)/16+(GR Section Credit * # of Students in the Section)/12

Full-Time Faculty by Department College of Education

		FALL 2008	FALL 2009	FALL 2010	FALL 2011	FALL 2012	1-YEAR CHANGE	5-YEAR CHANGE
Comm Disorder/Deaf	FT Faculty	7	7	8	8	9	12.5%	28.6%
	Student FTE	265.3	294.9	347.8	360.7	320.0	-11.3%	20.6%
	Course FTE	184.1	210.4	247.9	273.3	229.2	-16.1%	24.5%
Special Edu/Literacy	FT Faculty	19	15	11	11	10	-9.1%	-47.4%
	Student FTE	396.7	484.0	550.6	567.0	553.6	-2.4%	39.5%
	Course FTE	491.2	530.9	584.4	525.4	494.9	-5.8%	0.8%
Phys Ed/Rec/Health	FT Faculty	16	16	16	16	17	6.3%	6.3%
	Student FTE	625.1	753.2	809.6	815.8	760.5	-6.8%	21.7%
	Course FTE	672.9	767.3	891.2	961.3	908.8	-5.5%	35.1%
Global Edu Innovation	FT Faculty	5	3	4	4	5	25.0%	0.0%
	Student FTE	123.8	109.6	113.1	63.4	44.7	-29.4%	-63.9%
	Course FTE	180.4	155.8	154.7	146.4	111.6	-23.8%	-38.1%
Curriculum Teaching	FT Faculty	25	24	24	23	23	0.0%	-8.0%
	Student FTE	1,216.5	1,351.1	1,409.8	1,251.3	1,044.9	-16.5%	-14.1%
	Course FTE	607.9	657.3	663.7	593.5	544.5	-8.3%	-10.4%

* Faculty department is based on faculty's cost center in the HR data system.

* Student FTE = UG Enrolled Credits/16 + GR Enrolled Credits/12

Course FTE = (UG Section Credit * # of Students in the Section)/16+(GR Section Credit * # of Students in the Section)/12

Full-Time Faculty by Department College of Humanities and Social Sciences

		FALL 2008	FALL 2009	FALL 2010	FALL 2011	FALL 2012	1-YEAR CHANGE	5-YEAR CHANGE
Communication	FT Faculty	12	12	12	12	12	0.0%	0.0%
	Student FTE	328.2	377.9	413.3	510.9	495.5	-3.0%	50.9%
	Course FTE	425.7	458.3	542.4	645.0	613.9	-4.8%	44.2%
English	FT Faculty	26	25	21	21	19	-9.5%	-26.9%
	Student FTE	297.9	337.5	389.3	370.2	341.4	-7.8%	14.6%
	Course FTE	964.6	1,069.7	1,148.7	1,146.5	1,028.2	-10.3%	6.6%
History	FT Faculty	14	16	15	14	14	0.0%	0.0%
	Student FTE	302.1	340.1	366.2	348.6	331.3	-5.0%	9.6%
	Course FTE	442.1	512.6	567.6	513.6	465.0	-9.5%	5.2%
Psychology	FT Faculty	18	15	17	16	15	-6.3%	-16.7%
	Student FTE	758.0	829.4	1,013.1	1,173.1	1,251.9	6.7%	65.2%
	Course FTE	748.3	859.5	877.0	969.9	996.7	2.8%	33.2%
Social Work	FT Faculty	5	3	3	2	1	-50.0%	-80.0%
	Student FTE	203.9	166.9	55.4	0.4			
	Course FTE	88.6	79.1	42.9				
Gen Studies	FT Faculty	6	0	4	9	10	11.1%	66.7%
	Student FTE	10.6	12.9	6.1	0.3			
	Course FTE	345.8	361.5	410.4	426.6	443.8	4.0%	28.3%
Social Sciences	FT Faculty	27	30	28	25	23	-8.0%	-14.8%
	Student FTE	538.4	417.4	417.2	392.8	363.5	-7.4%	-32.5%
	Course FTE	757.9	815.1	842.6	833.3	723.1	-13.2%	-4.6%
HSS Other	FT Faculty	0	0	1	1	2	100.0%	

* Faculty department is based on faculty's cost center in the HR data system.

* Student FTE = UG Enrolled Credits/16 + GR Enrolled Credits/12

Course FTE = (UG Section Credit * # of Students in the Section)/16+(GR Section Credit * # of Students in the Section)/12

Full-Time Faculty by Department College of Natural, Applied, and Health Sciences

		FALL 2008	FALL 2009	FALL 2010	FALL 2011	FALL 2012	1-YEAR CHANGE	5-YEAR CHANGE
Mathematics	FT Faculty	13	13	17	15	15	0.0%	15.4%
	Student FTE	201.0	213.6	251.0	228.8	214.4	-6.3%	6.7%
	Course FTE	694.9	652.3	753.4	732.7	708.4	-3.3%	2.0%
Computer Science	FT Faculty	15	13	8	7	9	28.6%	-40.0%
	Student FTE	145.4	153.3	193.3	243.4	255.1	4.8%	75.4%
	Course FTE	244.3	273.3	298.4	290.2	254.5	-12.3%	4.2%
Nursing	FT Faculty	8	7	8	9	11	22.2%	37.5%
	Student FTE	150.5	162.4	180.5	209.3	236.8	13.1%	57.4%
	Course FTE	127.0	129.4	148.3	170.4	182.9	7.3%	44.0%
Env & Life Sci	FT Faculty	0	1	1	1	2	100.0%	
	Student FTE	169.4	207.9	233.2	259.4	254.4	-1.9%	50.2%
	Course FTE				3.5	19.3	450.0%	
Natural Sciences	FT Faculty	38	35	34	31	28	-9.7%	-26.3%
	Student FTE	514.3	560.4	679.5	781.7	826.5	5.7%	60.7%
	Course FTE	717.7	800.3	867.3	906.2	901.7	-0.5%	25.6%
Sustainability Studies	FT Faculty	0	0	0	1	2	100.0%	
	Student FTE			7.8	21.8	23.8	9.2%	
	Course FTE		1.5	3.4	10.5	19.4	85.1%	

* Faculty department is based on faculty's cost center in the HR data system.

* Student FTE = UG Enrolled Credits/16 + GR Enrolled Credits/12

Course FTE = (UG Section Credit * # of Students in the Section)/16+(GR Section Credit * # of Students in the Section)/12

Full-Time Faculty by Department College of Visual and Performing Arts

		FALL 2008	FALL 2009	FALL 2010	FALL 2011	FALL 2012	1-YEAR CHANGE	5-YEAR CHANGE
Theatre	FT Faculty	6	7	7	6	7	16.7%	16.7%
	Student FTE	77.9	74.7	74.6	130.4	131.1	0.5%	68.2%
	Course FTE	66.4	80.3	84.4	83.2	94.3	13.5%	42.0%
Design	FT Faculty	14	12	11	10	11	10.0%	-21.4%
	Student FTE	357.7	347.8	381.6	380.4	375.9	-1.2%	5.1%
	Course FTE	199.5	198.9	216.4	235.9	251.2	6.5%	25.9%
Fine Arts	FT Faculty	14	14	13	11	10	-9.1%	-28.6%
	Student FTE	151.2	163.5	166.6	164.4	155.1	-5.7%	2.6%
	Course FTE	383.4	377.7	377.0	412.5	352.9	-14.5%	-8.0%
Music	FT Faculty	7	7	7	7	7	0.0%	0.0%
	Student FTE	66.1	59.7	75.0	86.3	85.5	-0.8%	29.5%
	Course FTE	163.1	160.3	161.8	206.6	166.6	-19.3%	2.1%

* Faculty department is based on faculty's cost center in the HR data system.

* Student FTE = UG Enrolled Credits/16 + GR Enrolled Credits/12

Course FTE = (UG Section Credit * # of Students in the Section)/16+(GR Section Credit * # of Students in the Section)/12

Full-Time Faculty by Department Nathan Weiss Graduate College

		FALL 2008	FALL 2009	FALL 2010	FALL 2011	FALL 2012	1-YEAR CHANGE	5-YEAR CHANGE
Counselor Edu	FT Faculty	6	5	5	7	8	14.3%	33.3%
	Student FTE	117.3	125.8	146.0	153.0	149.5	-2.3%	27.5%
	Course FTE	111.5	122.5	154.3	157.5	153.5	-2.5%	37.7%
Edu Leadership	FT Faculty	7	7	5	6	7	16.7%	0.0%
	Student FTE	118.5	116.8	109.3	100.7	89.9	-10.7%	-24.1%
	Course FTE	173.5	155.3	152.5	139.2	109.4	-21.4%	-36.9%
Grad Mgmt Studies	FT Faculty	3	3	4	5	4	-20.0%	33.3%
	Student FTE	72.0	78.0	70.3	50.5	39.3	-22.3%	-45.5%
	Course FTE	50.3	47.0	47.3	35.0	26.5	-24.3%	-47.3%
Adv Stu Psyc	FT Faculty	0	2	3	4	5	25.0%	
	Student FTE	27.0	34.6	45.8	56.3	61.8	9.9%	129.0%
	Course FTE		11.7	16.8	51.8	54.7	5.6%	
Social Work - Graduate	FT Faculty	4	6	5	4	5	25.0%	25.0%
	Student FTE	97.9	128.3	124.2	153.8	125.4	-18.4%	28.1%
	Course FTE	97.9	130.8	134.6	154.5	126.4	-18.2%	29.1%
Occupational Therapy - GR	FT Faculty	4	3	3	5	4	-20.0%	0.0%
	Student FTE	72.9	72.3	81.4	86.3	87.2	1.1%	19.7%
	Course FTE	75.4	79.8	76.9	91.0	90.7	-0.3%	20.3%

Full-Time Faculty by Department Other Academic Unit

		FALL 2008	FALL 2009	FALL 2010	FALL 2011	FALL 2012	1-YEAR CHANGE	5-YEAR CHANGE
NJCSTM	FT Faculty	6	6	8	8	9	12.5%	50.0%
	Student FTE	121.2	118.9	107.9	152.0	130.5	-14.1%	7.7%
	Course FTE	64.6	72.0	79.3	72.6	79.9	10.0%	23.7%

* Faculty department is based on faculty's cost center in the HR data system.

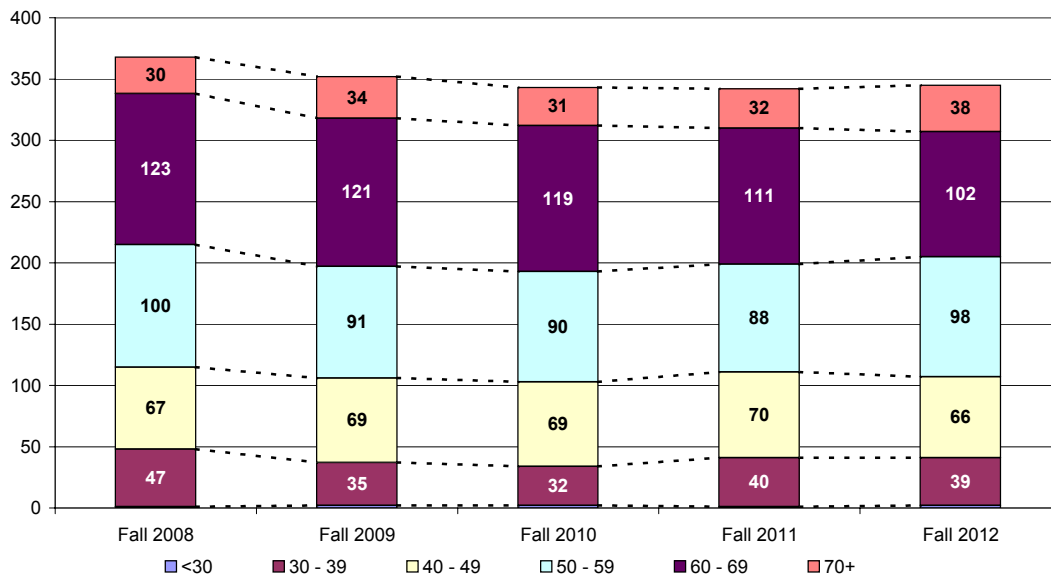
* Student FTE = UG Enrolled Credits/16 + GR Enrolled Credits/12

Course FTE = (UG Section Credit * # of Students in the Section)/16+(GR Section Credit * # of Students in the Section)/12

Distribution of Full-Time Faculty by Age

	FALL 2008	FALL 2009	FALL 2010	FALL 2011	FALL 2012		1-YEAR CHANGE	5-YEAR CHANGE
					No.	%		
AGE								
< 30	1	2	2	0	1	0.3%		0.0%
30 - 39	47	35	32	40	39	11.3%	-2.5%	-17.0%
40 - 49	67	69	69	70	66	19.2%	-5.7%	-1.5%
50 - 59	100	91	90	88	98	28.5%	11.4%	-2.0%
60 - 69	123	121	119	111	102	29.7%	-8.1%	-17.1%
70 +	30	34	31	32	38	11.0%	18.8%	26.7%
TOTAL	368	352	343	341	344	100.0%	0.9%	-6.5%
AVERAGE AGE	55.22	55.77	55.89	55.53	55.45		-0.1%	0.4%

Distribution of Full-Time Faculty by Age Group Fall 2008 - Fall 2012



Kean Wenzhou - Fall 2012

Kean Wenzhou

Student Profile				Faculty Profile			
		#	%			#	%
<u>Enrollment Total</u>				<u>Faculty Total</u>			
Headcount		205	100%			13	100%
FTE (Credits/16)		206.3					
<u>By Academic Program</u>				<u>By Academic Rank</u>			
BA.ENGLISH		80	39.0%	Associate Professor		1	7.7%
BS.ACCOUNTING		50	24.4%	Assistant Professor		11	84.6%
BS.COMPUTER/SCIENCE		27	13.2%	Lecturer		1	7.7%
BS.FINANCE		48	23.4%				
<u>By Gender</u>				<u>By Highest Degree</u>			
Female		128	62.4%	Doctorate		12	92.3%
Male		77	37.6%	Master		1	7.7%
<u>By Age Group</u>				<u>By Gender</u>			
<18		6	2.9%	Female		6	46.2%
18-19		193	94.1%	Male		7	53.8%
20-21		5	2.4%				
22-24		1	0.5%	<u>By Age Group</u>			
Average Age		18		30-39		4	30.8%
<u>By Race/Ethnicity</u>				40-49		4	30.8%
Asian		205	100.0%	50-59		3	23.1%
<u>By Attendance Status</u>				60-69		2	15.4%
Full-Time		205	100.0%	Average Age		47	
				<u>By Race/Ethnicity</u>			
				Asian		5	38.5%
				White		8	61.5%
				<u>By Status</u>			
				Full-Time		13	100.0%
<u>Course Sections</u>				<u>Student Faculty Ratio</u>			
		<u>SecCnt</u>	<u>StuCnt</u>				
CPS*1032		8	180	Full-Time Students		205	
CPS*1231		1	24	Full-Time Faculty		13	
ENG*1300		10	205	Student_Faculty Ratio		16	
ESL*0303		10	205				
ESL*0305		10	205				
GE*1000		10	205				
Total		49	1024				

* Kean Wenzhou students and faculty are not included in the regular Kean student and faculty count



Office of Institutional Research
Kean University
1000 Morris Avenue
Union, New Jersey 07083
<http://ir.kean.edu>
908.737.3470