



Student and Faculty Profile

Kean University

Fall 2011

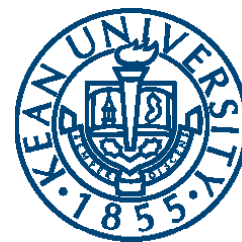
Office of Institutional Research

Quick Facts

Founded:	1855	President:	Dr. Dawood Farahi
Campus Size:	185.4 acres	Mailing Address:	1000 Morris Avenue Union, New Jersey 07083
Main Campus:	121.5 acres		
East Campus:	28.5 acres		
Liberty Hall Campus:	35.4 acres	Main Phone:	(908) 737-KEAN (908) 737-5326
Number of Colleges:	6		
		Admissions:	(908) 737-7100
Degree Programs Offered			
Undergraduate:	48	Public Info:	(908) 737-NEWS (908) 737-6397
Graduate			
- Master:	31		
- Post Master Professional Diploma:	2		
- Doctor:	2		
Average Class Size:	21		
Student/Faculty Ratio:	18:1		
2011-2012 Tuition and Fees:			
(Full-Time, In-State)			
Undergraduate:	\$10,199.50		
Graduate:	\$14,151.00		
Doctor:	\$15,978.00		

Contents

<i>Enrollment</i>	<i>Page 01</i>
<i>Degrees Conferred</i>	<i>Page 25</i>
<i>Employees</i>	<i>Page 35</i>
<i>Faculty</i>	<i>Page 39</i>



Kean University- Enrollment

Enrollment

Page 02	At-a-Glance
Page 04	Enrollment Trends
Page 06	Enrollment by Geographic Origin
Page 08	Retention & Graduation Rates
Page 10	Enrollment by Department and Program
Page 17	Second Majors by Program
Page 18	Course FTE

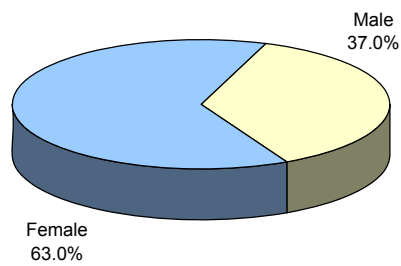


Fall 2011 Enrollment At-a-Glance

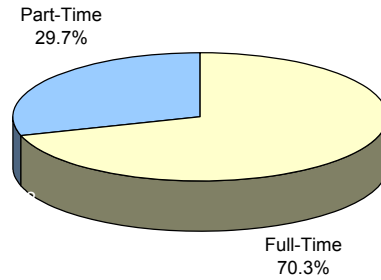
	UNIVERSITY		UNDERGRADUATE		GRADUATE	
	No.	%	No.	%	No.	%
ENROLLMENT						
Headcount	16,187	100%	13,462	100%	2,725	100%
F.T.E.	12278.8		10750.8		1528.0	
GENDER						
Male	5,982	37.0%	5,345	39.7%	637	23.4%
Female	10,205	63.0%	8,117	60.3%	2,088	76.6%
RACE / ETHNICITY						
Black	3,029	18.7%	2,505	18.6%	524	19.2%
Hispanic	3,515	21.7%	3,122	23.2%	393	14.4%
Asian	1,052	6.5%	904	6.7%	148	5.4%
White	7,288	45.0%	5,667	42.1%	1,621	59.5%
MultiRace	162	1.0%	149	1.1%	13	0.5%
Not Reported	1,141	7.0%	1,115	8.3%	26	1.0%
ATTENDANCE STATUS						
Full-Time	11,382	70.3%	10,492	77.9%	890	32.7%
Part-Time	4,805	29.7%	2,970	22.1%	1,835	67.3%
ADMISSIONS STATUS						
Regular	6,656	41.1%	4,275	31.8%	2,381	87.4%
Special	1,694	10.5%	1,694	12.6%		
E.O.F.	735	4.5%	735	5.5%		
Transfer	6,313	39.0%	6,313	46.9%		
E.O.F. Transfer	302	1.9%	302	2.2%		
Other	487	3.0%	143	1.1%	344	12.6%
REGISTRATION STATUS						
First-Time	2,863	17.7%	1,924	14.3%	939	34.5%
Transfer	1,691	10.4%	1,691	12.6%		
Stop-out / Readmit	662	4.1%	662	4.9%		
Continuing	10,971	67.8%	9,185	68.2%	1,786	65.5%
AGE						
<25	10,314	63.7%	9,785	72.7%	529	19.4%
25 - 34	3,672	22.7%	2,415	17.9%	1,257	46.1%
35 - 44	1,179	7.3%	728	5.4%	451	16.6%
45 - 54	783	4.8%	432	3.2%	351	12.9%
55+	239	1.5%	102	0.8%	137	5.0%
Average Age	26		24		33	
MATRICULATION STATUS						
Degree Seeking	15,113	93.4%	13,152	97.7%	1,961	72.0%
Certificate / Non-Degree	620	3.8%	197	1.5%	423	15.5%
Non-Matriculated	454	2.8%	113	0.8%	341	12.5%
STATE RESIDENCE						
New Jersey	15,646	96.7%	13,052	97.0%	2,594	95.2%
Out-of-State	293	1.8%	223	1.7%	70	2.6%
International	248	1.5%	187	1.4%	61	2.2%

Additional information is available online at <http://ir.kean.edu>.

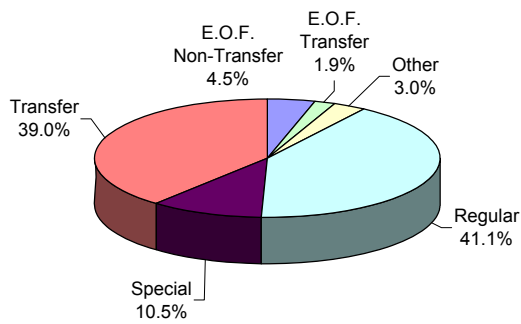
**DISTRIBUTION OF STUDENTS
By Gender**



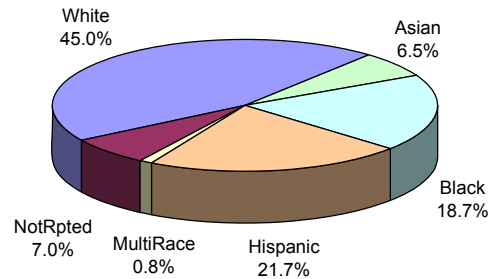
**DISTRIBUTION OF STUDENTS
By Attendance Status**



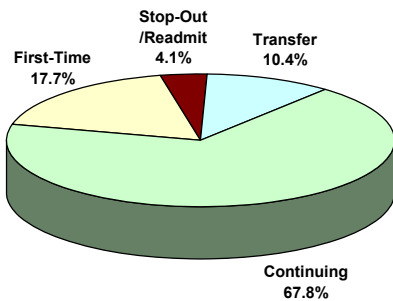
**DISTRIBUTION OF STUDENTS
By Admit Status**



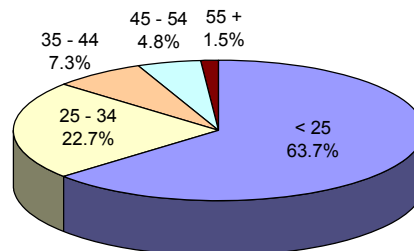
**DISTRIBUTION OF STUDENTS
By Race/Ethnicity**



**DISTRIBUTION OF STUDENTS
By Registration Status**



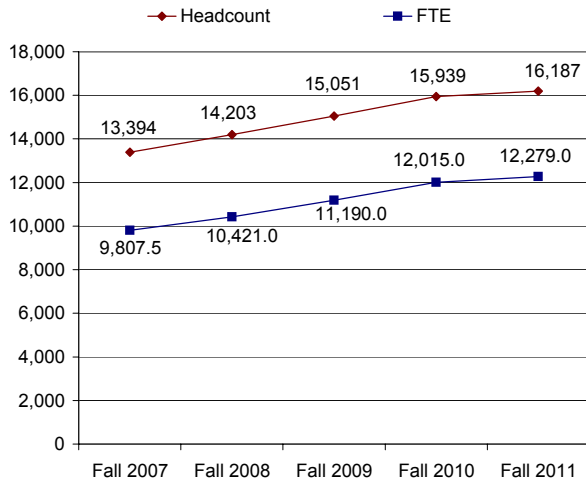
**DISTRIBUTION OF STUDENTS
By Age Group**



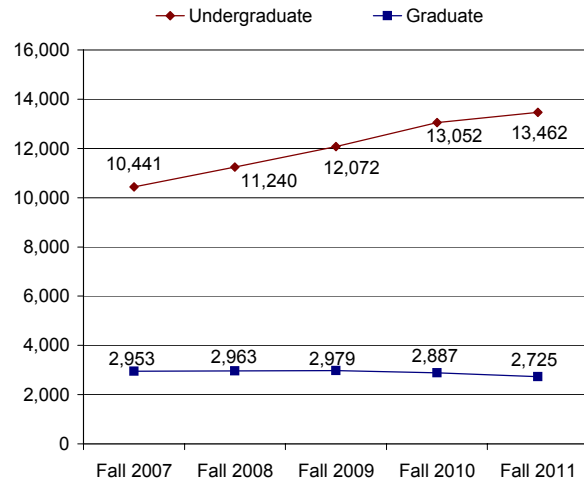
Enrollment Trends (Fall 2007 - Fall 2011)

	FALL 2007	FALL 2008	FALL 2009	FALL 2010	FALL 2011	1 YEAR CHANGE	5 YEAR CHANGE
ENROLLMENT							
Headcount	13,394	14,203	15,051	15,939	16,187	1.6%	20.9%
F.T.E.	9807.5	10421.0	11189.8	12015.2	12278.8	2.2%	25.2%
Undergraduate	10,441	11,240	12,072	13,052	13,462	3.1%	28.9%
Graduate	2,953	2,963	2,979	2,887	2,725	-5.6%	-7.7%
GENDER							
Male	4,515	4,846	5,300	5,673	5,982	5.4%	32.5%
Female	8,879	9,357	9,751	10,266	10,205	-0.6%	14.9%
RACE / ETHNICITY							
Black	2,570	2,745	2,804	2,989	3,029	1.3%	17.9%
Hispanic	2,405	2,634	2,909	3,344	3,515	5.1%	46.2%
Asian	809	901	1,083	1,114	1,052	-5.6%	30.0%
White	6,985	7,232	7,511	7,907	7,288	-7.8%	4.3%
MultiRace	0	0	0	122	162	32.8%	
Not Reported	625	691	744	463	1,141	146.4%	82.6%
ATTENDANCE STATUS							
Full-Time	8,590	9,181	10,081	11,031	11,382	3.2%	32.5%
Part-Time	4,804	5,022	4,970	4,908	4,805	-2.1%	0.0%
ADMISSIONS STATUS							
Regular	6,412	6,425	6,432	6,725	6,656	-1.0%	3.8%
Special	724	930	1,127	1,413	1,694	19.9%	134.0%
E.O.F.	921	937	918	806	735	-8.8%	-20.2%
Transfer	4,366	4,895	5,475	6,083	6,313	3.8%	44.6%
E.O.F. Transfer	246	273	323	324	302	-6.8%	22.8%
Other	725	743	776	588	487	-17.2%	-32.8%
REGISTRATION STATUS							
First-Time	2,563	2,624	2,870	2,948	2,863	-2.9%	11.7%
Transfer	1,278	1,497	1,733	1,914	1,691	-11.7%	32.3%
Stop-out/ Readmit	531	604	583	588	662	12.6%	24.7%
Continuing	9,022	9,478	9,865	10,489	10,971	4.6%	21.6%
AGE							
<25	7,753	8,226	8,953	9,832	10,314	4.9%	33.0%
25-34	3,129	3,446	3,638	3,761	3,672	-2.4%	17.4%
35-44	1,342	1,351	1,309	1,278	1,179	-7.7%	-12.1%
45-54	893	913	872	831	783	-5.8%	-12.3%
55+	277	267	279	237	239	0.8%	-13.7%
Average Age	27.04	26.93	26.59	26.10	25.74	-1.4%	-4.8%
MATRICULATION STATUS							
Degree Seeking	12,062	12,830	13,643	14,630	15,113	3.3%	25.3%
Certificate/ Non-Degree	638	656	717	763	620	-18.7%	-2.8%
Non-Matriculated	694	717	691	546	454	-16.8%	-34.6%
STATE RESIDENCE							
New Jersey	12,888	13,680	14,494	15,364	15,646	1.8%	21.4%
Out-of-State	230	246	275	304	293	-3.6%	27.4%
International	276	277	282	271	248	-8.5%	-10.1%

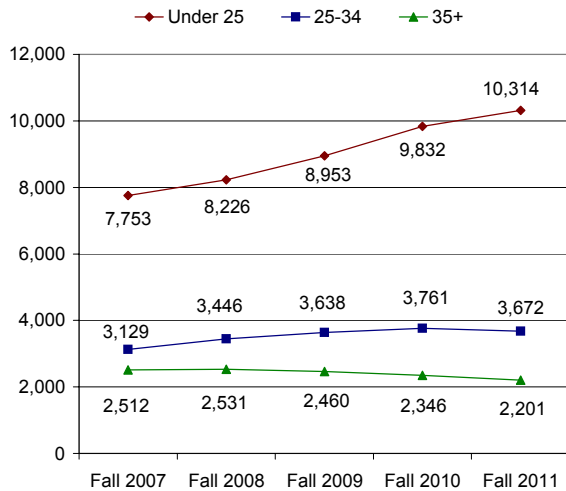
HEADCOUNT & FTE Fall 2007 - Fall 2011



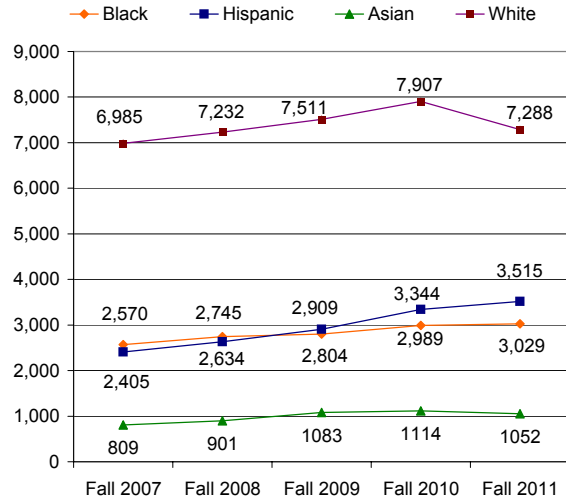
UNDERGRADUATE & GRADUATE Fall 2007 - Fall 2011



AGE GROUP Fall 2007 - Fall 2011



RACE/ETHNICITY Fall 2007 - Fall 2011



Enrollment by Geographic Origin

	FALL 2007	FALL 2008	FALL 2009	FALL 2010	FALL 2011		5-YEAR CHANGE
					No.	%	
NEW JERSEY RESIDENTS	12,888	13,680	14,494	15,364	15,646	96.7%	21.4%
Union	3,692	3,752	3,819	3,946	4,101	25.3%	11.1%
Middlesex	3,049	3,263	3,277	3,431	3,407	21.0%	11.7%
Essex	1,523	1,655	1,734	1,802	1,752	10.8%	15.0%
Ocean	681	940	1,219	1,429	1,540	9.5%	126.1%
Monmouth	930	904	971	1,041	1,048	6.5%	12.7%
Hudson	536	588	628	707	789	4.9%	47.2%
Somerset	714	769	804	832	729	4.5%	2.1%
Bergen	443	465	495	562	644	4.0%	45.4%
Morris	383	380	445	448	406	2.5%	6.0%
Passaic	258	262	303	305	292	1.8%	13.2%
Mercer	114	136	155	175	221	1.4%	93.9%
Hunterdon	135	135	150	160	169	1.0%	25.2%
Burlington	106	115	130	133	148	0.9%	39.6%
Warren	60	75	98	109	102	0.6%	70.0%
Sussex	43	51	75	82	93	0.6%	116.3%
Camden	77	56	72	76	84	0.5%	9.1%
Atlantic	51	51	51	56	52	0.3%	2.0%
Gloucester	39	38	38	39	35	0.2%	-10.3%
Cape May	18	13	8	11	14	0.1%	-22.2%
Cumberland	22	20	14	12	14	0.1%	-36.4%
Salem	14	12	8	8	6	0.0%	-57.1%
NON-RESIDENTS	230	246	275	304	293	1.8%	27.4%
New York	159	184	204	218	214	1.3%	34.6%
Pennsylvania	26	25	35	39	30	0.2%	15.4%
Other	45	37	36	47	49	0.3%	8.9%
INTERNATIONAL	276	277	282	271	248	1.5%	-10.1%
TOTAL	13,394	14,203	15,051	15,939	16,187	100.0%	20.9%

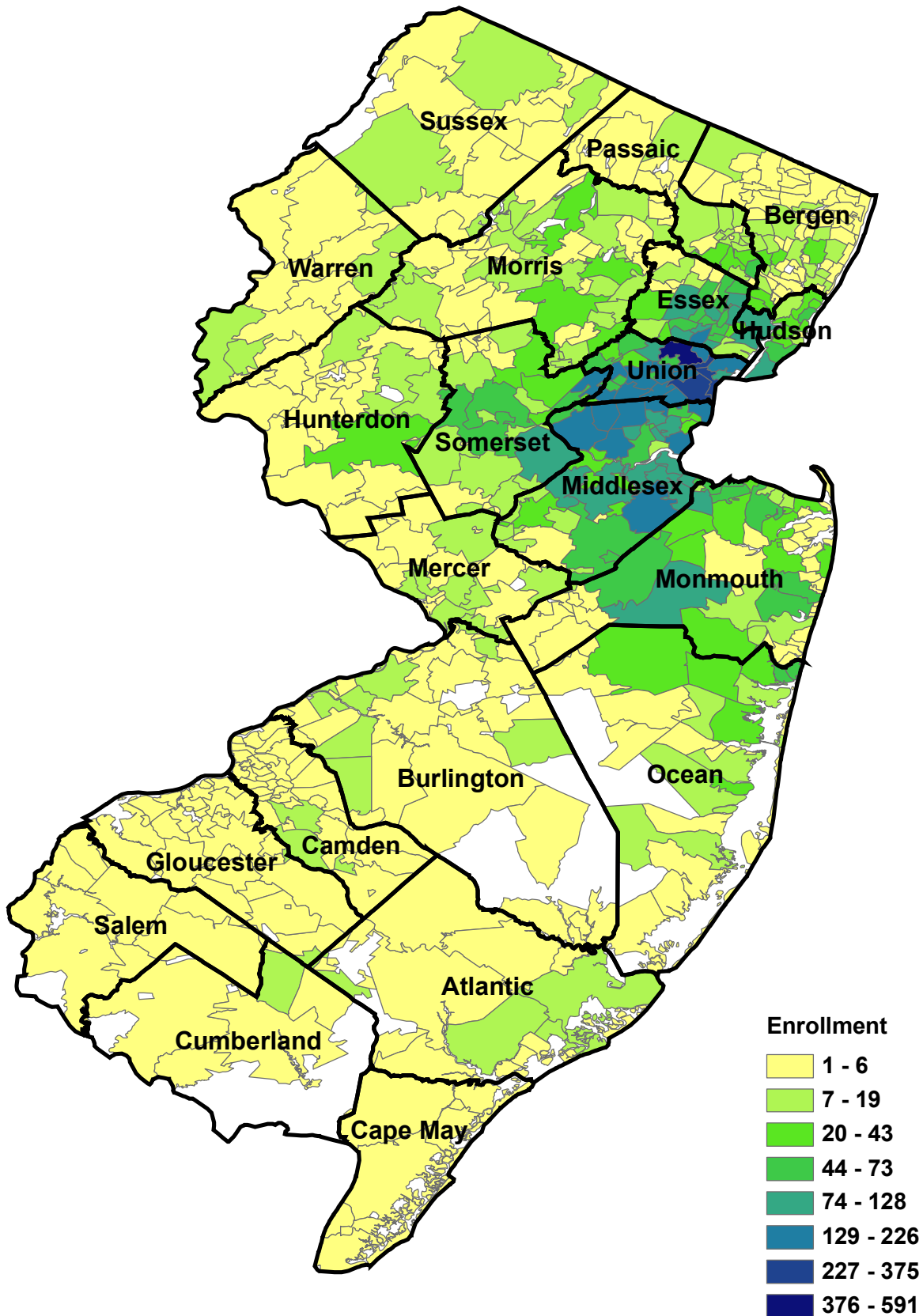
Top 10 Countries of Citizenship for International Students

(in alphabetical order)

Bermuda	Brazil
China	Colombia
Ghana	India
Kenya	Nigeria
Philippines	Poland

International students come from 55 different countries and areas.

Fall 2011 Enrollment by ZIP Code



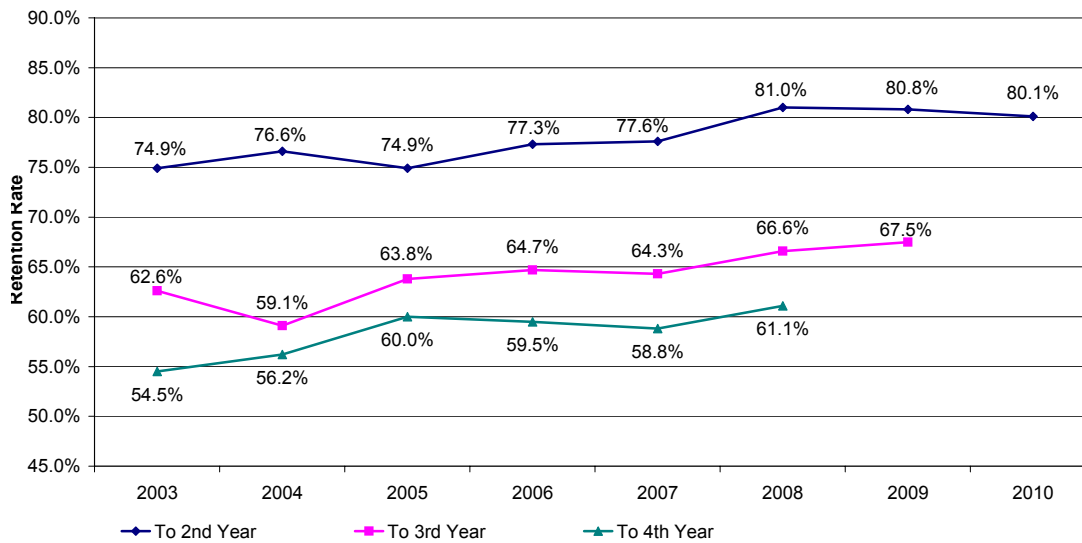
First-Time, Full-Time Freshmen Retention Rates

COHORT YEAR	HEAD COUNT	# CONTINUED			% CONTINUED		
		TO 2ND YEAR	TO 3RD YEAR	TO 4TH YEAR	TO 2ND YEAR	TO 3RD YEAR	TO 4TH YEAR
2001	1,132	871	685	605	76.94%	60.51%	53.45%
2002	1,317	991	776	706	75.25%	58.92%	53.61%
2003	1,311	982	821	714	74.90%	62.62%	54.46%
2004	1,254	961	741	705	76.63%	59.09%	56.22%
2005	1,391	1,042	887	835	74.91%	63.77%	60.03%
2006	1,394	1,078	902	829	77.33%	64.71%	59.47%
2007	1,447	1,123	930	851	77.61%	64.27%	58.81%
2008	1,418	1,148	945	866	80.96%	66.64%	61.07%
2009	1,518	1,226	1,024	-	80.76%	67.46%	-
2010	1,731	1,386	-	-	80.07%	-	-

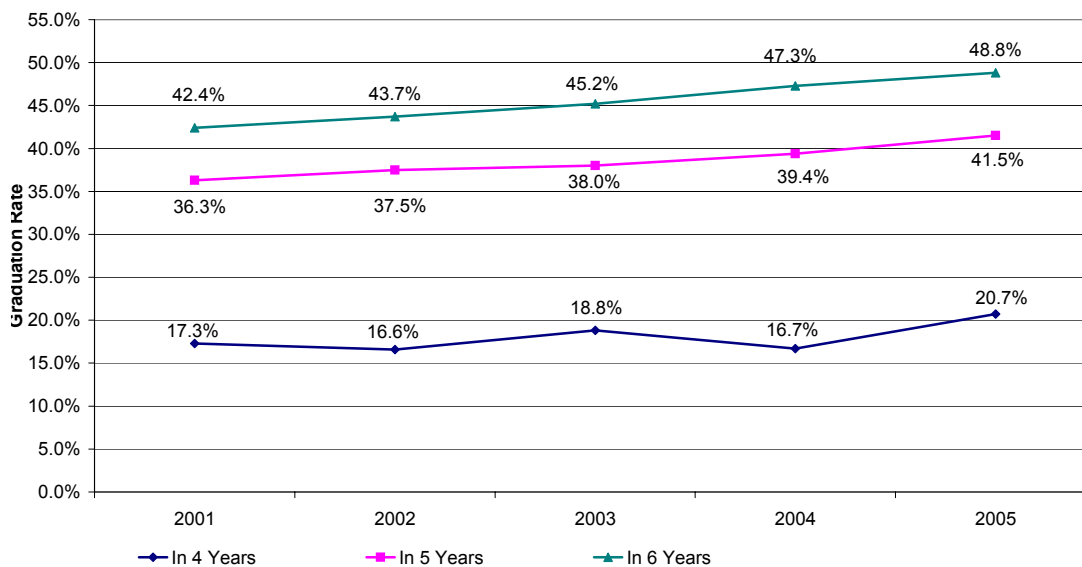
First-Time, Full-Time Freshmen Graduation Rates

COHORT YEAR	HEAD COUNT	# GRADUATED			% GRADUATED		
		IN 4 YEARS	IN 5 YEARS	IN 6 YEARS	IN 4 YEARS	IN 5 YEARS	IN 6 YEARS
2001	1,132	196	411	480	17.31%	36.31%	42.40%
2002	1,317	218	494	575	16.55%	37.51%	43.66%
2003	1,311	247	498	593	18.84%	37.99%	45.23%
2004	1,254	210	494	593	16.75%	39.39%	47.29%
2005	1,391	288	577	679	20.70%	41.48%	48.81%

First-Time, Full-Time Degree-Seeking Undergraduate Retention Rates 2003 - 2010 Cohorts



First-Time, Full-Time Degree-Seeking Undergraduate Graduation Rates 2001 - 2005 Cohorts



Enrollment by Department and Program College of Business and Public Management

	FALL 2007	FALL 2008	FALL 2009	FALL 2010	FALL 2011	1-YEAR CHANGE	5-YEAR CHANGE
ENROLLMENT							
Accounting/Finance							
Accounting (UG)	433	516	581	598	597	-0.2%	37.9%
Accounting (GR)	74	67	72	69	59	-14.5%	-20.3%
Finance (UG)	171	190	209	188	214	13.8%	25.1%
Accounting/Finance Total:	678	773	862	855	870	1.8%	28.3%
CrimJust/PubAdm							
Criminal Justice (UG)	547	621	654	768	859	11.8%	57.0%
Criminal Justice (GR)	0	0	1	3	4	33.3%	
Public Admin. (UG)	118	121	110	142	150	5.6%	27.1%
Public Admin. (GR)	145	138	140	143	142	-0.7%	-2.1%
CrimJust/PubAdm Total:	810	880	905	1,056	1,155	9.4%	42.6%
Mgmt/Marketing							
Management Sci. (UG)	712	767	884	879	914	4.0%	28.4%
Marketing (UG)	292	294	311	302	302	0.0%	3.4%
Mgmt/Marketing Total:	1,004	1,061	1,195	1,181	1,216	3.0%	21.1%
<i>BPM UG Total:</i>	<i>2,273</i>	<i>2,509</i>	<i>2,749</i>	<i>2,877</i>	<i>3,036</i>	<i>5.5%</i>	<i>33.6%</i>
<i>BPM GR Total:</i>	<i>219</i>	<i>205</i>	<i>213</i>	<i>215</i>	<i>205</i>	<i>-4.7%</i>	<i>-6.4%</i>
BPM Total:	2,492	2,714	2,962	3,092	3,241	4.8%	30.1%

Enrollment by Department and Program College of Education

	FALL 2007	FALL 2008	FALL 2009	FALL 2010	FALL 2011	1-YEAR CHANGE	5-YEAR CHANGE
ENROLLMENT							
Comm Disorder/Deaf							
Speech Lang. Pathology (GR)	110	125	135	164	166	1.2%	50.9%
Speech, Lang Hear. Sci. (UG)	138	174	205	234	235	0.4%	70.3%
Comm Disorder/Deaf Total:	248	299	340	398	401	0.8%	61.7%
Curriculum Teaching							
Early Childhood Edu. (UG)	585	548	563	581	511	-12.0%	-12.6%
Early Childhood Edu. (GR)	70	61	60	49	49	0.0%	-30.0%
Elem/Mid/Sec Edu (UG)	842	876	1,051	1,069	992	-7.2%	17.8%
Instruction & Curriculum (GR)	193	197	176	237	195	-17.7%	1.0%
Curriculum Teaching Total:	1,690	1,682	1,850	1,936	1,747	-9.8%	3.4%
Global Edu Innovation							
Spanish (UG)	212	179	152	154	87	-43.5%	-59.0%
Global Edu Innovation Total:	212	179	152	154	87	-43.5%	-59.0%
Phys Ed/Rec/Health							
Athletic Training (UG)	51	77	98	124	168	35.5%	229.4%
Exercise Science (GR)	22	22	17	17	23	35.3%	4.5%
Physical Edu (UG)	478	550	695	743	669	-10.0%	40.0%
Recreation Admin. (UG)	72	86	89	89	120	34.8%	66.7%
Phys Ed/Rec/Health Total:	623	735	899	973	980	0.7%	57.3%
Special Edu/Literacy							
Edu/Media/Spec. (GR)	24	23	17	7	3	*	*
Educator of Indivs with Disabilities (UG)	206	271	394	493	534	8.3%	159.2%
Reading Spec. (GR)	83	76	72	55	37	-32.7%	-55.4%
Special Edu (GR)	317	351	365	355	325	-8.5%	2.5%
Special Edu/Literacy Total:	630	721	848	910	899	-1.2%	42.7%
<i>EDU UG Total:</i>	<i>2,584</i>	<i>2,761</i>	<i>3,247</i>	<i>3,487</i>	<i>3,316</i>	<i>-4.9%</i>	<i>28.3%</i>
<i>EDU GR Total:</i>	<i>819</i>	<i>855</i>	<i>842</i>	<i>884</i>	<i>798</i>	<i>-9.7%</i>	<i>-2.6%</i>
EDU Total:	3,403	3,616	4,089	4,371	4,114	-5.9%	20.9%

* Phasing-Out Program

Enrollment by Department and Program

College of Humanities and Social Sciences

	FALL 2007	FALL 2008	FALL 2009	FALL 2010	FALL 2011	1-YEAR CHANGE	5-YEAR CHANGE
ENROLLMENT							
Communication							
Communication (UG)	252	218	249	338	521	54.1%	106.7%
Communication Studies (GR)	21	17	14	16	21	31.3%	0.0%
Media Film (UG)	102	154	184	137	57	-58.4%	-44.1%
Communication Total:	375	389	447	491	599	22.0%	59.7%
English							
English (UG)	348	387	433	492	475	-3.5%	36.5%
English Writing (GR)	0	0	2	11	14	27.3%	
English Total:	348	387	435	503	489	-2.8%	40.5%
Gen Studies							
Philosophy and Religion (UG)	8	13	15	7	1	*	*
Gen Studies Total:	8	13	15	7	1		
History							
History (UG)	401	379	420	451	443	-1.8%	10.5%
Holocaust & Genocide (GR)	14	18	20	14	9	-35.7%	-35.7%
History Total:	415	397	440	465	452	-2.8%	8.9%
Psychology							
Behavioral Sci (GR)	43	38	44	17	6	*	*
Edu Psych (GR)	12	10	14	10	4	*	*
Marri & Fam Therapy (GR)	33	24	18	24	31	29.2%	-6.1%
Psych Rehab (UG)	38	54	50	69	78	13.0%	105.3%
Psychology (UG)	816	833	895	1,101	1,261	14.5%	54.5%
Psychology (GR)	0	0	5	44	61	38.6%	
Psychology Total:	942	959	1,026	1,265	1,441	13.9%	53.0%
Social Sciences							
Economics (UG)	204	228	132	88	72	-18.2%	-64.7%
Political Science (UG)	118	139	127	105	107	1.9%	-9.3%
Political Science (GR)	18	16	10	16	10	-37.5%	-44.4%
Soc/SocJust (GR)	0	12	24	26	31	19.2%	
Sociology (UG)	242	294	246	299	281	-6.0%	16.1%
Social Sciences Total:	582	689	539	534	501	-6.2%	-13.9%
Social Work							
Social Work (UG)	213	252	204	64	1	*	*
Social Work Total:	213	252	204	64	1		
<i>HSS UG Total:</i>	<i>2,742</i>	<i>2,951</i>	<i>2,955</i>	<i>3,151</i>	<i>3,297</i>	<i>4.6%</i>	<i>20.2%</i>
<i>HSS GR Total:</i>	<i>141</i>	<i>135</i>	<i>151</i>	<i>178</i>	<i>187</i>	<i>5.1%</i>	<i>32.6%</i>
HSS Total:	2,883	3,086	3,106	3,329	3,484	4.7%	20.8%

* Phasing-Out Program

Enrollment by Department and Program

College of Natural, Applied, and Health Sciences

	FALL 2007	FALL 2008	FALL 2009	FALL 2010	FALL 2011	1-YEAR CHANGE	5-YEAR CHANGE
ENROLLMENT							
Computer Science							
Comp.Integrated Design & Mfg. Tech. (UG)	10	1	0	0	0	*	*
Computer Info. Systems (GR)	0	0	0	0	2		
Computer Science (UG)	141	132	161	187	223	19.3%	58.2%
Electronics Tech. (UG)	21	15	7	1	0	*	*
Information Technology (UG)	23	27	24	53	73	37.7%	217.4%
Tech.Edu. (UG)	1	0	0	0	0	*	*
Computer Science Total:	196	175	192	241	298	23.7%	52.0%
Env & Life Sci							
Biology-BS (UG)	154	161	194	223	268	20.2%	74.0%
Earth Science - BS (UG)	32	33	38	43	34	-20.9%	6.3%
Env & Life Sci Total:	186	194	232	266	302	13.5%	62.4%
Mathematics							
Comp/Stat/Math. (GR)	6	7	7	7	5	*	*
Math. Edu. (GR)	15	13	10	11	12	9.1%	-20.0%
Math. Science (UG)	236	249	265	307	280	-8.8%	18.6%
Mathematics Total:	257	269	282	325	297	-8.6%	15.6%
Natural Sciences							
Biology (UG)	325	363	438	574	676	17.8%	108.0%
Chemistry (UG)	90	111	90	100	102	2.0%	13.3%
Earth Science (UG)	50	53	45	53	47	-11.3%	-6.0%
HIM (UG)	42	32	25	25	26	4.0%	-38.1%
Medical Tech. (UG)	54	61	71	70	87	24.3%	61.1%
Natural Sciences Total:	561	620	669	822	938	14.1%	67.2%
Nursing							
M.S.N./M.P.A. in Nursing (GR)	11	5	6	9	9	*	*
Nursing (UG)	270	298	287	318	396	24.5%	46.7%
Nursing (GR)	71	89	90	93	102	9.7%	43.7%
Nursing Total:	352	392	383	420	507	20.7%	44.0%
Sustainability Studies							
Sustainability Science (UG)	0	0	0	9	26	188.9%	
Sustainability Studies Total:	0	0	0	9	26	188.9%	
<i>NAHS UG Total:</i>	<i>1,449</i>	<i>1,536</i>	<i>1,645</i>	<i>1,963</i>	<i>2,238</i>	<i>14.0%</i>	<i>54.5%</i>
<i>NAHS GR Total:</i>	<i>103</i>	<i>114</i>	<i>113</i>	<i>120</i>	<i>130</i>	<i>8.3%</i>	<i>26.2%</i>
NAHS Total:	1,552	1,650	1,758	2,083	2,368	13.7%	52.6%

* Phasing-Out Program

Enrollment by Department and Program School of Visual and Performing Arts

	FALL 2007	FALL 2008	FALL 2009	FALL 2010	FALL 2011	1-YEAR CHANGE	5-YEAR CHANGE
ENROLLMENT							
Design							
Graphic Comm (UG)	62	60	49	47	27	-42.6%	-56.5%
Graphic Comm (GR)	35	24	16	12	10	*	*
Industrial Design (UG)	30	49	54	67	69	3.0%	130.0%
Interior Design (UG)	132	148	156	171	157	-8.2%	18.9%
Visual Comm (UG)	166	160	150	174	205	17.8%	23.5%
Design Total:	425	441	425	471	468	-0.6%	10.1%
Fine Arts							
Art History (UG)	22	19	15	13	16	23.1%	-27.3%
Fine Arts (UG)	117	105	121	113	106	-6.2%	-9.4%
Fine Arts Edu (GR)	58	49	48	46	42	-8.7%	-27.6%
Studio Art (UG)	37	31	37	48	59	22.9%	59.5%
Fine Arts Total:	234	204	221	220	223	1.4%	-4.7%
Music							
Music (UG)	32	39	33	33	41	24.2%	28.1%
Music Edu. (UG)	41	41	43	58	64	10.3%	56.1%
Music Total:	73	80	76	91	105	15.4%	43.8%
Theatre							
Speech & Theatre (UG)	12	6	1	0	0	*	*
Theatre (UG)	59	61	65	61	107	75.4%	81.4%
Theatre Design & Tech. (UG)	2	3	6	3	6	100.0%	200.0%
Theatre Performance (UG)	6	14	10	17	22	29.4%	266.7%
Theatre Total:	79	84	82	81	135	66.7%	70.9%
VPA Other							
Liberal Studies (GR)	23	20	16	16	12	-25.0%	-47.8%
VPA Other Total:	23	20	16	16	12	-25.0%	-47.8%
<i>VPA UG Total:</i>	<i>718</i>	<i>736</i>	<i>740</i>	<i>805</i>	<i>879</i>	<i>9.2%</i>	<i>22.4%</i>
<i>VPA GR Total:</i>	<i>116</i>	<i>93</i>	<i>80</i>	<i>74</i>	<i>64</i>	<i>-13.5%</i>	<i>-44.8%</i>
VPA Total:	834	829	820	879	943	7.3%	13.1%

* Phasing-Out Program

Enrollment by Department and Program Nathan Weiss Graduate College

	FALL 2007	FALL 2008	FALL 2009	FALL 2010	FALL 2011	1-YEAR CHANGE	5-YEAR CHANGE
ENROLLMENT							
Adv Stu Psyc							
PsyD.School & Clinical Psych (GR_D)	0	0	10	17	27	58.8%	
School Psychology (GR)	32	32	24	28	32	14.3%	0.0%
Adv Stu Psyc Total:	32	32	34	45	59	31.1%	84.4%
Counselor Edu							
Counselor Edu (GR)	238	236	245	282	285	1.1%	19.7%
Counselor Edu Total:	238	236	245	282	285	1.1%	19.7%
Edu Leadership							
EdD.Urban/Leader (GR_D)	0	19	33	45	59	31.1%	
Edu Admin. (GR)	249	288	269	231	209	-9.5%	-16.1%
Edu Leadership Total:	249	307	302	276	268	-2.9%	7.6%
Grad Mgmt Studies							
MBA in Global Management (GR)	96	103	112	96	69	-28.1%	-28.1%
MIS (GR)	23	11	6	1	0	*	*
Grad Mgmt Studies Total:	119	114	118	97	69	-28.9%	-42.0%
Occupational Therapy - GR							
Occupational Therapy (UG)	1	0	0	0	0		*
Occupational Therapy (GR)	72	79	77	81	86	6.2%	19.4%
Occupational Therapy - GR Total:	73	79	77	81	86	6.2%	17.8%
Social Work - Graduate							
Social Work (GR)	83	81	113	122	150	23.0%	80.7%
Social Work - Graduate Total:	83	81	113	122	150	23.0%	80.7%
<i>NWGC UG Total:</i>	<i>1</i>	<i>0</i>	<i>0</i>	<i>0</i>	<i>0</i>		
<i>NWGC GR_D Total:</i>	<i>0</i>	<i>19</i>	<i>43</i>	<i>62</i>	<i>86</i>	<i>38.7%</i>	
<i>NWGC GR Total:</i>	<i>793</i>	<i>830</i>	<i>846</i>	<i>841</i>	<i>831</i>	<i>-1.2%</i>	<i>4.8%</i>
NWGC Total:	794	849	889	903	917	1.6%	15.5%

* Phasing-Out Program

Enrollment by Department and Program Other Academic Unit

	FALL 2007	FALL 2008	FALL 2009	FALL 2010	FALL 2011	1-YEAR CHANGE	5-YEAR CHANGE
ENROLLMENT							
NJCSTM							
Biotechnology (GR)	21	24	26	24	38	58.3%	81.0%
Science & Tech. (UG)	62	105	106	88	104	18.2%	67.7%
Science & Tech. (GR)	0	4	5	4	5	25.0%	
NJCSTM Total:	83	133	137	116	147	26.7%	77.1%
<i>OthAcad UG Total:</i>	<i>62</i>	<i>105</i>	<i>106</i>	<i>88</i>	<i>104</i>	<i>18.2%</i>	<i>67.7%</i>
<i>OthAcad GR Total:</i>	<i>21</i>	<i>28</i>	<i>31</i>	<i>28</i>	<i>43</i>	<i>53.6%</i>	<i>104.8%</i>
OthAcad Total:	83	133	137	116	147	26.7%	77.1%

Second Majors by Program

	FALL 2007	FALL 2008	FALL 2009	FALL 2010	FALL 2011	1-YEAR CHANGE	5-YEAR CHANGE
ENROLLMENT							
Psychology	171	143	145	151	213	41.1%	24.6%
English	141	191	271	215	162	-24.7%	14.9%
History	73	95	163	156	104	-33.3%	42.5%
Earth Science	47	68	78	78	83	6.4%	76.6%
Spanish	36	41	57	50	71	42.0%	97.2%
Math. Science	46	69	83	63	58	-7.9%	26.1%
Sociology	34	29	28	26	33	26.9%	-2.9%
Biology	13	19	24	30	29	-3.3%	123.1%
Fine Arts	19	16	25	27	12	-55.6%	-36.8%
Communication	11	11	12	11	11	0.0%	0.0%
Criminal Justice	3	1	6	7	9	28.6%	200.0%
Economics	11	11	17	13	6	-53.8%	-45.5%
Computer Science	2	1	1	1	4	300.0%	100.0%
Political Science	6	7	7	3	3	0.0%	-50.0%
Asian Studies	0	0	0	0	3		
Finance	4	8	4	4	2	-50.0%	-50.0%
Art History	5	1	2	4	2	-50.0%	-60.0%
Visual Comm	0	0	0	1	2	100.0%	
Management Sci.	2	2	2	1	2	100.0%	0.0%
Public Admin.	2	1	4	3	1	-66.7%	-50.0%
Theatre	3	1	0	2	1	-50.0%	-66.7%
Accounting	0	0	0	2	1	-50.0%	
Philosophy and Religion	2	4	3	2	1	-50.0%	-50.0%
Studio Art	0	0	1	0	1		
Marketing	2	0	1	0	1		-50.0%
Graphic Comm	0	1	0	0	1		
Biology-BS	1	0	2	4	0		
Electronics Tech.	0	0	1	1	0		
Chemistry	0	1	1	1	0		
Interior Design	0	0	0	1	0		
Recreation Admin.	0	0	1	1	0		
Information Technology	1	0	0	0	0		
Music	1	0	3	0	0		
Tech.Edu.	1	1	0	0	0		
Media Film	0	4	3	0	0		
Medical Tech.	1	0	0	0	0		
Educator of Indivs with Disabilities	2	1	0	0	0		
Physical Edu	1	1	0	0	0		
HIM	1	0	0	0	0		
Second Majors Total	642	728	945	858	816	-4.9%	27.1%

Course FTE by Department and Academic Level

College of Business and Public Management

	FALL 2007	FALL 2008	FALL 2009	FALL 2010	FALL 2011	1-YEAR CHANGE	5-YEAR CHANGE
COURSE FTE							
Accounting/Finance	338.7	380.9	421.2	481.1	480.1	-0.2%	41.7%
ACCT (UG)	196.7	202.7	228.0	236.8	252.0	6.4%	28.1%
ACCT (GR)	47.3	44.5	49.0	45.3	35.3	-22.1%	-25.4%
BLAW (UG)				60.4	73.9	22.4%	
FIN (UG)	92.3	127.7	141.2	134.4	116.4	-13.4%	26.2%
FIN (GR)	2.5	6.0	3.0	4.3	2.5	-41.2%	0.0%
CrimJust/PubAdm	342.8	379.9	414.9	479.4	481.2	0.4%	40.4%
CJ (UG)	165.3	201.9	232.8	275.6	263.9	-4.2%	59.7%
CJ (GR)	8.3	3.8	1.8	3.5	2.3	-35.7%	-72.7%
ID (UG)	3.8	1.7	2.4		3.9		5.0%
ID (GR)					2.0		
PA (UG)	78.2	88.6	90.9	106.3	107.8	1.4%	37.9%
PA (GR)	87.3	84.0	87.0	94.0	101.3	7.7%	16.0%
Mgmt/Marketing	476.9	549.2	541.9	482.1	472.3	-2.0%	-1.0%
MGS (UG)	342.9	388.5	381.4	297.8	293.1	-1.6%	-14.5%
MGS (GR)	14.8	15.5	18.0	12.8	7.8	-39.2%	-47.5%
MKT (UG)	108.8	140.4	136.5	167.1	165.0	-1.2%	51.7%
MKT (GR)	10.5	4.8	6.0	4.5	6.5	44.4%	-38.1%
<i>BPM UG Total:</i>	<i>987.9</i>	<i>1,151.5</i>	<i>1,213.3</i>	<i>1,278.3</i>	<i>1,276.1</i>	<i>-0.2%</i>	<i>29.2%</i>
<i>BPM GR Total:</i>	<i>170.5</i>	<i>158.5</i>	<i>164.8</i>	<i>164.3</i>	<i>157.5</i>	<i>-4.1%</i>	<i>-7.6%</i>
BPM Total:	1,158.4	1,310.0	1,378.0	1,442.6	1,433.6	-0.6%	23.8%

Course FTE by Department and Academic Level College of Education

	FALL 2007	FALL 2008	FALL 2009	FALL 2010	FALL 2011	1-YEAR CHANGE	5-YEAR CHANGE
COURSE FTE							
Comm Disorder/Deaf	175.2	184.1	210.4	247.9	273.3	10.2%	56.0%
CDD (UG)	60.9	74.8	97.8	124.3	151.3	21.7%	148.2%
CDD (GR)	114.3	109.3	112.6	123.6	122.0	-1.3%	6.8%
Curriculum Teaching	582.6	607.9	657.3	663.7	593.5	-10.6%	1.9%
EC (UG)	97.2	99.3	75.9	77.4	68.4	-11.6%	-29.6%
EC (GR)	29.0	26.8	22.8	21.0	16.4	-21.8%	-43.4%
EDUC (UG)	55.3	57.9	57.9	58.9	60.4	2.5%	9.2%
EMSE (UG)	205.7	208.8	264.8	268.7	243.0	-9.6%	18.1%
EMSE (GR)	121.5	132.3	141.0	120.0	99.0	-17.5%	-18.5%
ID (UG)	73.9	82.9	94.9	117.8	106.3	-9.7%	43.9%
Global Edu Innovation	179.0	180.4	155.8	154.7	146.4	-5.3%	-18.2%
CHIN (UG)	2.4	4.7	5.8	4.7	5.1	8.0%	107.7%
FL (UG)	4.7	3.0	3.8	3.9	8.3	109.5%	76.0%
FREN (UG)	6.9	6.8	5.4	9.0	9.0	0.0%	29.7%
GERM (UG)	3.0	3.8	1.1	3.0	2.3	-25.0%	-25.0%
HEBR (UG)	1.1						
ITAL (UG)	11.8	16.3	4.3	8.1	6.4	-20.9%	-46.0%
PORT (UG)	8.4	11.1	6.6	8.1	7.5	-7.0%	-11.1%
SPAN (UG)	139.3	133.3	128.8	117.9	108.0	-8.4%	-22.5%
SPAN (GR)	1.3	1.5					
Phys Ed/Rec/Health	632.1	672.9	767.3	891.2	961.3	7.9%	52.1%
GERO (UG)			0.2				
HED (UG)	174.0	198.6	232.3	288.6	306.9	6.4%	76.4%
HED (GR)			4.0	3.5	3.5	0.0%	
ID (UG)	191.8	174.9	173.3	210.4	238.3	13.3%	24.2%
PED (UG)	204.5	233.4	286.9	309.2	309.4	0.1%	51.3%
PED (GR)	12.0	11.0	9.0	6.8	9.8	44.4%	-18.8%
REC (UG)	49.8	55.0	61.6	72.8	93.4	28.2%	87.7%
Special Edu/Literacy	467.1	491.2	530.9	584.4	525.4	-10.1%	12.5%
CS (UG)	118.7	116.6	110.1	101.1	98.6	-2.4%	-16.9%
CS (GR)	45.8	39.3	36.5	23.0	16.8	-27.2%	-63.4%
EDUC (UG)	46.9	54.9	58.1	55.7	59.3	6.4%	26.4%
ID (UG)	70.5	70.3	89.6	123.0	106.3	-13.6%	50.8%
LM (UG)	2.6	0.2					
SPED (UG)	41.1	54.1	76.6	101.6	102.4	0.8%	149.1%
SPED (GR)	141.5	155.8	160.0	180.0	142.0	-21.1%	0.4%
<i>EDU UG Total:</i>	<i>1,570.6</i>	<i>1,660.6</i>	<i>1,835.8</i>	<i>2,064.0</i>	<i>2,090.4</i>	<i>1.3%</i>	<i>33.1%</i>
<i>EDU GR Total:</i>	<i>465.3</i>	<i>475.8</i>	<i>486.0</i>	<i>477.9</i>	<i>409.4</i>	<i>-14.3%</i>	<i>-12.0%</i>
EDU Total:	2,035.9	2,136.4	2,321.8	2,541.9	2,499.9	-1.7%	22.8%

Course FTE by Department and Academic Level

College of Humanities and Social Sciences

	FALL 2007	FALL 2008	FALL 2009	FALL 2010	FALL 2011	1-YEAR CHANGE	5-YEAR CHANGE
COURSE FTE							
Communication	398.8	425.7	458.3	542.4	645.0	18.9%	61.7%
COMM (UG)	286.6	314.9	330.5	398.9	520.3	30.4%	81.5%
COMM (GR)	17.8	15.0	9.5	19.0	15.8	-17.1%	-11.3%
FILM (UG)	24.9	31.1	41.9	52.9	31.1	-41.1%	24.8%
ID (UG)	16.5	8.8	12.9	9.4	22.7	142.0%	37.5%
MED (UG)	53.0	55.8	63.5	62.3	55.1	-11.5%	4.0%
English	878.6	964.6	1,069.7	1,148.7	1,146.5	-0.2%	30.5%
ENG (UG)	823.7	883.3	983.8	1,045.5	1,029.9	-1.5%	25.0%
ENG (GR)	9.7	14.4	13.7	20.5	25.8	26.0%	167.2%
ESL (UG)	36.0	57.6	64.1	62.8	76.1	21.2%	111.5%
ID (UG)	9.3	9.4	8.1	19.9	14.6	-26.4%	58.1%
Gen Studies	341.4	345.8	361.5	410.4	426.6	3.9%	24.9%
GE (UG)	210.6	202.4	206.8	238.9	250.1	4.7%	18.8%
PHIL (UG)	107.8	120.9	134.8	145.5	156.2	7.3%	44.9%
REL (UG)	23.1	22.5	19.9	26.1	20.3	-22.3%	-12.2%
History	412.6	442.1	512.6	567.6	513.6	-9.5%	24.5%
HIST (UG)	411.6	442.1	512.6	567.6	513.6	-9.5%	24.8%
HIST (GR)	1.0						
Psychology	730.0	748.3	859.5	877.0	969.9	10.6%	32.9%
ID (GR)	3.0	5.0	5.8	5.5	6.5	18.2%	116.7%
PSRT (UG)	6.2	10.1	12.0	16.9	19.5	15.6%	215.2%
PSRT (GR)			0.5	0.3			
PSY (UG)	637.1	658.4	770.1	777.8	878.7	13.0%	37.9%
PSY (GR)	83.8	74.8	71.2	76.7	65.3	-14.9%	-22.1%
Social Sciences	721.4	757.9	815.1	842.6	833.3	-1.1%	15.5%
ANTH (UG)	40.7	38.3	36.9	33.8	39.6	17.2%	-2.8%
ECO (UG)	180.4	199.9	221.4	210.4	182.8	-13.1%	1.4%
ECO (GR)	4.3		4.3	6.3			
PS (UG)	145.5	163.7	152.1	162.0	192.2	18.6%	32.1%
PS (GR)	14.0	9.0	5.0	8.5	6.3	-26.5%	-55.4%
SOC (UG)	336.6	337.9	381.2	405.8	394.7	-2.7%	17.3%
SOC (GR)		9.3	14.3	16.0	17.8	10.9%	
<i>HSS UG Total:</i>	<i>3,423.3</i>	<i>3,645.5</i>	<i>4,031.7</i>	<i>4,279.1</i>	<i>4,397.5</i>	<i>2.8%</i>	<i>28.5%</i>
<i>HSS GR Total:</i>	<i>133.4</i>	<i>127.4</i>	<i>124.1</i>	<i>152.7</i>	<i>137.3</i>	<i>-10.0%</i>	<i>2.9%</i>
HSS Total:	3,556.7	3,772.9	4,155.7	4,431.7	4,534.8	2.3%	27.5%

Course FTE by Department and Academic Level College of Natural, Applied, and Health Sciences

	FALL 2007	FALL 2008	FALL 2009	FALL 2010	FALL 2011	1-YEAR CHANGE	5-YEAR CHANGE
COURSE FTE							
Computer Science	233.9	244.3	273.3	298.4	290.2	-2.8%	24.0%
CPS (UG)	170.8	174.4	203.1	227.4	214.8	-5.6%	25.8%
CPS (GR)	1.8	1.0	2.5	2.8	4.4	60.6%	152.4%
ID (UG)	36.6	45.2	41.8	39.0	34.7	-11.1%	-5.1%
TECH (UG)	24.9	23.6	25.8	29.3	36.3	24.1%	46.0%
Env & Life Sci					3.5		
SELS (UG)					3.5		
Mathematics	664.3	694.9	652.3	753.4	732.7	-2.8%	10.3%
MATH (UG)	652.8	683.4	635.8	736.2	719.9	-2.2%	10.3%
MATH (GR)	11.5	11.5	16.5	17.3	12.8	-26.1%	10.9%
Natural Sciences	684.6	717.7	800.3	867.3	906.2	4.5%	32.4%
ASTR (UG)	23.5	25.5	28.0	34.8	27.3	-21.6%	16.0%
BIO (UG)	337.4	353.1	410.0	433.4	452.4	4.4%	34.1%
CHEM (UG)	124.1	140.7	146.3	161.6	175.1	8.4%	41.0%
CHEM (GR)		0.8		0.3	2.6	675.0%	
ES (UG)	37.2	38.3	52.9	52.8	53.8	1.9%	44.5%
GEOG (UG)	34.7	37.1	34.3	33.2	33.2	0.0%	-4.3%
GEOL (UG)	32.3	34.3	35.3	33.8	45.3	34.1%	40.3%
HIM (UG)	17.8						
ID (UG)	3.8	6.6	5.6	4.7	6.6	40.0%	75.0%
METR (UG)	30.9	32.6	31.3	42.3	39.8	-6.1%	28.7%
OCEN (UG)	6.8	5.5	10.8	10.0	11.3	12.5%	66.7%
PHYS (UG)	36.3	43.3	45.9	60.6	59.2	-2.3%	63.3%
Nursing	103.0	127.0	129.4	148.3	170.4	14.9%	65.4%
NURS (UG)	70.4	84.4	85.1	107.3	126.2	17.6%	79.3%
NURS (GR)	32.7	42.7	44.2	41.0	44.3	7.9%	35.5%
Sustainability Studies			1.5	3.4	10.5	211.1%	
SUST (UG)			1.5	3.4	10.5	211.1%	
<i>NAHS UG Total:</i>	<i>1,639.9</i>	<i>1,727.9</i>	<i>1,793.4</i>	<i>2,009.5</i>	<i>2,049.5</i>	<i>2.0%</i>	<i>25.0%</i>
<i>NAHS GR Total:</i>	<i>45.9</i>	<i>55.9</i>	<i>63.2</i>	<i>61.3</i>	<i>64.0</i>	<i>4.3%</i>	<i>39.4%</i>
NAHS Total:	1,685.9	1,783.9	1,856.7	2,070.8	2,113.5	2.1%	25.4%

Course FTE by Department and Academic Level School of Visual and Performing Arts

	FALL 2007	FALL 2008	FALL 2009	FALL 2010	FALL 2011	1-YEAR CHANGE	5-YEAR CHANGE
COURSE FTE							
Design	189.1	199.5	198.9	216.4	235.9	9.0%	24.7%
DSN (UG)	25.9	28.7	30.9	41.8	63.8	52.5%	146.4%
GCOM (UG)	30.8	34.9	27.4	23.6	10.9	-54.0%	-64.6%
GCOM (GR)	13.3	9.0	9.5	7.0	5.3	-25.0%	-60.4%
ID (UG)	11.6	12.9	11.4	19.5	21.0	7.7%	80.6%
IND (UG)	8.8	14.1	19.1	19.9	21.9	10.4%	148.9%
INTD (UG)	45.0	50.8	35.4	40.5	33.9	-16.2%	-24.6%
VC (UG)	53.8	49.1	65.1	64.1	79.1	23.4%	47.0%
Fine Arts	375.2	383.4	377.7	377.0	412.5	9.4%	10.0%
AH (UG)	129.8	125.8	108.8	110.1	116.3	5.6%	-10.4%
AH (GR)			0.8		0.3		
FA (UG)	218.5	234.3	247.3	249.1	277.6	11.4%	27.1%
FA (GR)	26.9	23.3	21.0	17.8	18.4	3.3%	-31.6%
Music	156.5	163.1	160.3	161.8	206.6	27.7%	32.0%
ID (GR)	1.3						
MUS (UG)	155.3	163.1	160.3	161.8	206.6	27.7%	33.1%
Theatre	72.2	66.4	80.3	84.4	83.2	-1.4%	15.2%
DANC (UG)					5.8		
ID (UG)	0.2	0.5	0.8	0.8	2.8	246.2%	1400.0%
THE (UG)	72.0	65.9	79.5	83.6	74.5	-10.8%	3.5%
VPA Other	3.5	4.5	3.0	1.0	1.0	0.0%	-71.4%
MALS (GR)	3.5	4.5	3.0	1.0	1.0	0.0%	-71.4%
<i>VPA UG Total:</i>	<i>751.6</i>	<i>780.1</i>	<i>786.0</i>	<i>814.8</i>	<i>914.3</i>	<i>12.2%</i>	<i>21.6%</i>
<i>VPA GR Total:</i>	<i>44.9</i>	<i>36.8</i>	<i>34.2</i>	<i>25.8</i>	<i>24.9</i>	<i>-3.5%</i>	<i>-44.5%</i>
VPA Total:	796.5	817.0	820.2	840.6	939.2	11.7%	17.9%

Course FTE by Department and Academic Level Nathan Weiss Graduate College

	FALL 2007	FALL 2008	FALL 2009	FALL 2010	FALL 2011	1-YEAR CHANGE	5-YEAR CHANGE
COURSE FTE							
Adv Stu Psyc			11.7	16.8	51.8	207.9%	
PSYD (GR)			11.7	16.8	51.8	207.9%	
Counselor Edu	109.8	111.5	122.5	154.3	157.5	2.1%	43.5%
CED (GR)	109.8	111.5	122.5	154.3	157.5	2.1%	43.5%
Edu Leadership	169.3	173.5	155.3	152.5	139.2	-8.7%	-17.8%
EDD (GR)		9.5	16.5	24.8	25.7	3.7%	
EL (GR)	169.3	164.0	138.8	127.8	113.5	-11.2%	-32.9%
Grad Mgmt Studies	39.0	50.3	47.0	47.3	35.0	-25.9%	-10.3%
GMBA (GR)	27.0	42.0	45.3	47.3	35.0	-25.9%	29.6%
MIS (GR)	12.0	8.3	1.8				
NWGC Other	17.9	21.1	23.6	25.5	27.5	7.8%	53.3%
ID (UG)	9.2	11.6	14.8	18.8	24.8	32.0%	169.4%
MAHG (GR)	8.8	9.5	8.8	6.8	2.8	-59.3%	-68.6%
Occupational Therapy - GR	68.5	75.4	79.8	76.9	91.0	18.4%	32.9%
OT (UG)	1.1	6.2	10.6	3.7	12.5	239.0%	1011.1%
OT (GR)	67.3	69.3	69.3	73.2	78.5	7.3%	16.6%
Social Work - Graduate	103.3	97.9	130.8	134.6	154.5	14.8%	49.6%
SW (GR)	103.3	97.9	130.8	134.6	154.5	14.8%	49.6%
<i>NWGC UG Total:</i>	<i>10.3</i>	<i>17.8</i>	<i>25.4</i>	<i>22.4</i>	<i>37.3</i>	<i>66.0%</i>	<i>261.2%</i>
<i>NWGC GR Total:</i>	<i>497.3</i>	<i>511.9</i>	<i>545.2</i>	<i>585.3</i>	<i>619.2</i>	<i>5.8%</i>	<i>24.5%</i>
NWGC Total:	507.6	529.7	570.5	607.8	656.5	8.0%	29.3%

Course FTE by Department and Academic Level Other Academic Unit

	FALL 2007	FALL 2008	FALL 2009	FALL 2010	FALL 2011	1-YEAR CHANGE	5-YEAR CHANGE
COURSE FTE							
NJCSTM	63.3	64.6	72.0	79.3	72.6	-8.5%	14.7%
BIO (GR)	12.8	7.7	7.0	10.9	17.7	61.8%	38.6%
ID (UG)	31.8		0.3				
ID (GR)	12.0	9.5	19.8	21.5	0.8	-96.5%	-93.8%
STE (GR)		3.3	3.5		4.0		
STME (UG)		28.0	26.6	28.8	36.4	26.5%	
STME (GR)	6.8	16.2	14.8	18.2	13.8	-23.9%	104.9%
<i>OthAcad UG Total:</i>	<i>31.8</i>	<i>28.0</i>	<i>26.9</i>	<i>28.8</i>	<i>36.4</i>	<i>26.5%</i>	<i>14.3%</i>
<i>OthAcad GR Total:</i>	<i>31.5</i>	<i>36.6</i>	<i>45.1</i>	<i>50.6</i>	<i>36.3</i>	<i>-28.3%</i>	<i>15.1%</i>
OthAcad Total:	63.3	64.6	72.0	79.3	72.6	-8.5%	14.7%

Course FTE by Department and Academic Level Other Courses

	FALL 2007	FALL 2008	FALL 2009	FALL 2010	FALL 2011	1-YEAR CHANGE	5-YEAR CHANGE
COURSE FTE							
Other					17.0		
ID (GR)					17.0		
<i>Other GR Total:</i>					<i>17.0</i>		
Other Total:					17.0		



Kean University - Degrees Conferred



Degrees Conferred

Page 26	At-a-Glance
Page 28	Degrees Conferred by Department and Program College of Business and Public Management
Page 29	Degrees Conferred by Department and Program College of Education
Page 30	Degrees Conferred by Department and Program College of Humanities and Social Sciences
Page 31	Degrees Conferred by Department and Program College of Natural, Applied, and Health Sciences
Page 32	Degrees Conferred by Department and Program School of Visual and Performing Arts
Page 33	Degrees Conferred by Department and Program Nathan Weiss Graduate College
Page 34	Degrees Conferred by Department and Program Other Academic Unit

Degrees Conferred, Fiscal Year 2010 - 2011

	TOTAL		BACHELOR'S		MASTER'S	
	No.	%	No.	%	No.	%
DEGREE LEVEL						
Bachelor's	2,519	78.3%	2,519	100.0%		
Master's	698	21.7%			698	100.0%
GENDER						
Male	1,016	31.6%	869	34.5%	147	21.1%
Female	2,201	68.4%	1,650	65.5%	551	78.9%
RACE / ETHNICITY						
Black	491	15.3%	381	15.1%	110	15.8%
Hispanic	555	17.3%	467	18.5%	88	12.6%
Asian	265	8.2%	216	8.6%	49	7.0%
White	1,719	53.4%	1,285	51.0%	434	62.2%
MultiRace	21	0.7%	17	0.7%	4	0.6%
Not Reported	166	5.2%	153	6.1%	13	1.9%
COLLEGE						
BPM	802	24.9%	717	28.5%	85	12.2%
EDU	764	23.7%	556	22.1%	208	29.8%
HSS	878	27.3%	813	32.3%	65	9.3%
NAHS	320	9.9%	280	11.1%	40	5.7%
NWGC	265	8.2%	0	0.0%	265	38.0%
VPA	156	4.8%	132	5.2%	24	3.4%
Other Academic unit	32	1.0%	21	0.8%	11	1.6%

* Fiscal Year includes degrees conferred between July 1 and June 30.

Top 10 Bachelor's Degrees Conferred

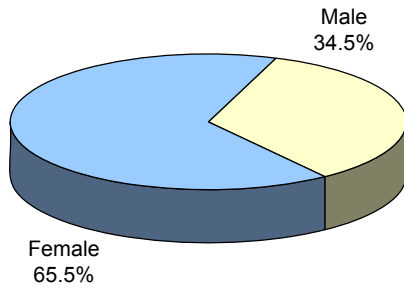
Psychology	284
Management Science	229
Accounting	164
Elementary Education	136
Criminal Justice	132
Physical Education	116
Educator of Individuals with Disabilities	106
English	104
History	102
Marketing	100

Top 10 Master's Degrees Conferred

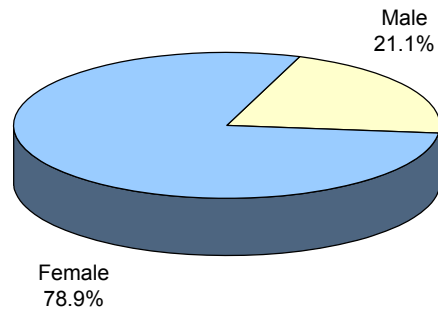
Instruction & Curriculum	80
Educational Administration	70
Counselor Education	64
Social Work	54
Special Education	49
Accounting	44
Speech Language Pathology	42
Public Administration	41
Nursing	36
Global MBA	34

Additional information is available online at <http://ir.kean.edu>.

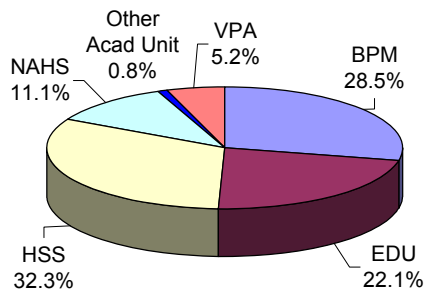
**BACHELOR'S DEGREES
By Gender**



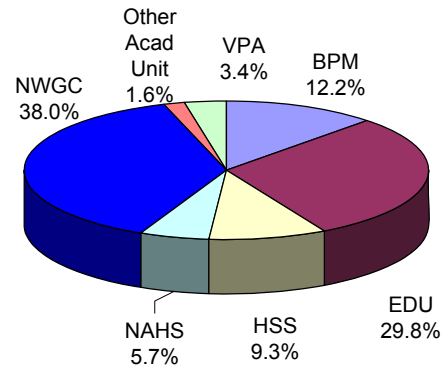
**MASTER'S DEGREES
By Gender**



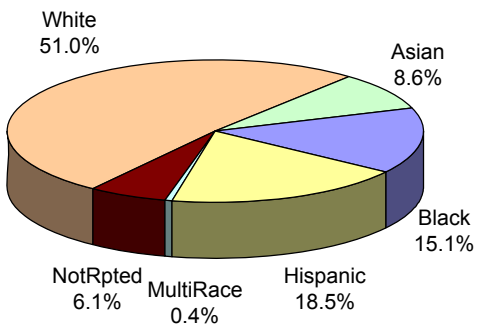
**BACHELOR'S DEGREES
By College**



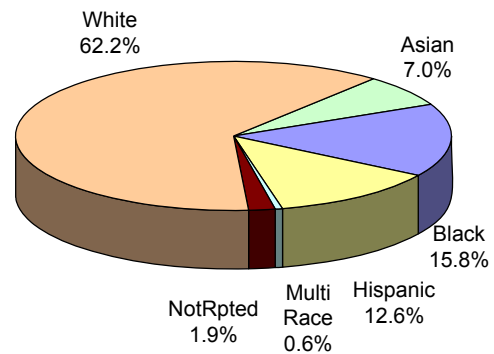
**MASTER'S DEGREES
By College**



**BACHELOR'S DEGREES
By Race/Ethnicity**



**MASTER'S DEGREES
By Race/Ethnicity**



Degrees Conferred by Department and Program

College of Business and Public Management

	FISCAL YR 2006-07	FISCAL YR 2007-08	FISCAL YR 2008-09	FISCAL YR 2009-10	FISCAL YR 2010-11	1-YEAR CHANGE	5-YEAR CHANGE
DEGREES CONFERRED							
Accounting/Finance							
Accounting (UG)	103	92	129	145	164	13.1%	59.2%
Accounting (GR)	48	40	32	45	44	-2.2%	-8.3%
Finance (UG)	42	48	53	60	71	18.3%	69.0%
Accounting/Finance Total:	193	180	214	250	279	11.6%	44.6%
CrimJust/PubAdm							
Criminal Justice (UG)	75	81	133	127	132	3.9%	76.0%
Public Admin. (UG)	39	21	30	36	21	-41.7%	-46.2%
Public Admin. (GR)	53	46	53	43	41	-4.7%	-22.6%
CrimJust/PubAdm Total:	167	148	216	206	194	-5.8%	16.2%
Mgmt/Marketing							
Management Sci. (UG)	187	194	200	250	229	-8.4%	22.5%
Marketing (UG)	73	70	84	83	100	20.5%	37.0%
Mgmt/Marketing Total:	260	264	284	333	329	-1.2%	26.5%
<i>BPM UG Total:</i>	<i>519</i>	<i>506</i>	<i>629</i>	<i>701</i>	<i>717</i>	<i>2.3%</i>	<i>38.2%</i>
<i>BPM GR Total:</i>	<i>101</i>	<i>86</i>	<i>85</i>	<i>88</i>	<i>85</i>	<i>-3.4%</i>	<i>-15.8%</i>
BPM Total:	620	592	714	789	802	1.6%	29.4%

Degrees Conferred by Department and Program College of Education

Degrees Conferred

	FISCAL YR 2006-07	FISCAL YR 2007-08	FISCAL YR 2008-09	FISCAL YR 2009-10	FISCAL YR 2010-11	1-YEAR CHANGE	5-YEAR CHANGE
DEGREES CONFERRED							
Comm Disorder/Deaf							
Speech Lang. Pathology (GR)	37	29	42	40	42	5.0%	13.5%
Speech, Lang Hear. Sci. (UG)	34	37	33	51	45	-11.8%	32.4%
Comm Disorder/Deaf Total:	71	66	75	91	87	-4.4%	22.5%
Curriculum Teaching							
Early Childhood Edu. (UG)	99	101	107	74	71	-4.1%	-28.3%
Early Childhood Edu. (GR)	19	19	25	15	11	-26.7%	-42.1%
Elem/Mid/Sec Edu (UG)	139	106	106	178	136	-23.6%	-2.2%
Instruction & Curriculum (GR)	61	70	58	72	80	11.1%	31.1%
Curriculum Teaching Total:	318	296	296	339	298	-12.1%	-6.3%
Global Edu Innovation							
Spanish (UG)	41	70	52	41	55	34.1%	34.1%
Global Edu Innovation Total:	41	70	52	41	55	34.1%	34.1%
Phys Ed/Rec/Health							
Athletic Training (UG)	3	5	7	6	6	0.0%	100.0%
Exercise Science (GR)	2	3	1	6	1	-83.3%	-50.0%
Physical Edu (UG)	57	60	73	89	116	30.3%	103.5%
Recreation Admin. (UG)	23	18	27	23	21	-8.7%	-8.7%
Phys Ed/Rec/Health Total:	85	86	108	124	144	16.1%	69.4%
Special Edu/Literacy							
Edu/Media/Spec. (GR)	12	15	8	9	4	-55.6%	-66.7%
Educator of Indivs with Disabilities (UG)	54	37	50	66	106	60.6%	96.3%
Reading Spec. (GR)	24	27	28	17	21	23.5%	-12.5%
Special Edu (GR)	61	48	50	60	49	-18.3%	-19.7%
Special Edu/Literacy Total:	151	127	136	152	180	18.4%	19.2%
EDU UG Total:	450	434	455	528	556	5.3%	23.6%
EDU GR Total:	216	211	212	219	208	-5.0%	-3.7%
EDU Total:	666	645	667	747	764	2.3%	14.7%

Degrees Conferred by Department and Program College of Humanities and Social Sciences

	FISCAL YR 2006-07	FISCAL YR 2007-08	FISCAL YR 2008-09	FISCAL YR 2009-10	FISCAL YR 2010-11	1-YEAR CHANGE	5-YEAR CHANGE
DEGREES CONFERRED							
Communication							
Communication (UG)	67	48	51	51	64	25.5%	-4.5%
Communication Studies (GR)	9	5	9	8	10	25.0%	11.1%
Media Film (UG)	8	33	20	41	43	4.9%	437.5%
Communication Total:	84	86	80	100	117	17.0%	39.3%
English							
English (UG)	56	74	86	89	104	16.9%	85.7%
English Writing (GR)	0	0	0	0	2		
English Total:	56	74	86	89	106	19.1%	89.3%
Gen Studies							
Philosophy and Religion (UG)	4	1	0	0	3		-25.0%
Gen Studies Total:	4	1	0	0	3		-25.0%
History							
History (UG)	83	89	79	84	102	21.4%	22.9%
Holocaust & Genocide (GR)	0	1	3	3	4	33.3%	
History Total:	83	90	82	87	106	21.8%	27.7%
Psychology							
Behavioral Sci (GR)	15	24	16	9	4	-55.6%	-73.3%
Edu Psych (GR)	5	14	11	10	18	80.0%	260.0%
Marri & Fam Therapy (GR)	4	8	9	4	5	25.0%	25.0%
Psych Rehab (UG)	10	7	8	13	10	-23.1%	0.0%
Psychology (UG)	200	205	206	229	284	24.0%	42.0%
Psychology (GR)	0	0	0	14	14	0.0%	
Psychology Total:	234	258	250	279	335	20.1%	43.2%
Social Sciences							
Economics (UG)	21	13	21	30	13	-56.7%	-38.1%
Political Science (UG)	31	26	30	34	39	14.7%	25.8%
Political Science (GR)	3	7	8	4	1	-75.0%	-66.7%
Soc/SocJust (GR)	0	0	0	0	7		
Sociology (UG)	45	44	65	80	90	12.5%	100.0%
Social Sciences Total:	100	90	124	148	150	1.4%	50.0%
Social Work							
Social Work (UG)	39	31	51	55	61	10.9%	56.4%
Social Work Total:	39	31	51	55	61	10.9%	56.4%
HSS UG Total:	564	571	617	706	813	15.2%	44.1%
HSS GR Total:	36	59	56	52	65	25.0%	80.6%
HSS Total:	600	630	673	758	878	15.8%	46.3%

Degrees Conferred by Department and Program College of Natural, Applied, and Health Sciences

Degrees Conferred

	FISCAL Yr 2006-07	FISCAL Yr 2007-08	FISCAL Yr 2008-09	FISCAL Yr 2009-10	FISCAL Yr 2010-11	1-YEAR CHANGE	5-YEAR CHANGE
DEGREES CONFERRED							
Computer Science							
Comp.Integrated Design & Mfg. Tech. (UG)	3	1	2	3	0	-100.0%	-100.0%
Computer Science (UG)	29	22	18	16	14	-12.5%	-51.7%
Electronics Tech. (UG)	7	4	1	0	1		-85.7%
Information Technology (UG)	12	5	5	3	2	-33.3%	-83.3%
Tech.Edu. (UG)	1	0	0	0	0		-100.0%
Computer Science Total:	52	32	26	22	17	-22.7%	-67.3%
Env & Life Sci							
Biology-BS (UG)	34	33	42	43	30	-30.2%	-11.8%
Earth Science - BS (UG)	10	6	7	6	8	33.3%	-20.0%
Env & Life Sci Total:	44	39	49	49	38	-22.4%	-13.6%
Mathematics							
Comp/Stat/Math. (GR)	6	2	1	2	2	0.0%	-66.7%
Math. Edu. (GR)	3	5	2	5	2	-60.0%	-33.3%
Math. Science (UG)	33	26	42	43	50	16.3%	51.5%
Mathematics Total:	42	33	45	50	54	8.0%	28.6%
Natural Sciences							
Biology (UG)	35	38	32	52	48	-7.7%	37.1%
Chemistry (UG)	12	10	14	15	12	-20.0%	0.0%
Earth Science (UG)	8	10	2	7	5	-28.6%	-37.5%
HIM (UG)	15	22	8	10	9	-10.0%	-40.0%
Medical Tech. (UG)	6	4	2	10	7	-30.0%	16.7%
Natural Sciences Total:	76	84	58	94	81	-13.8%	6.6%
Nursing							
M.S.N./M.P.A. in Nursing (GR)	5	10	3	0	0		-100.0%
Nursing (UG)	33	59	69	72	94	30.6%	184.8%
Nursing (GR)	13	27	26	42	36	-14.3%	176.9%
Nursing Total:	51	96	98	114	130	14.0%	154.9%
<i>NAHS UG Total:</i>	<i>238</i>	<i>240</i>	<i>244</i>	<i>280</i>	<i>280</i>	<i>0.0%</i>	<i>17.6%</i>
<i>NAHS GR Total:</i>	<i>27</i>	<i>44</i>	<i>32</i>	<i>49</i>	<i>40</i>	<i>-18.4%</i>	<i>48.1%</i>
NAHS Total:	265	284	276	329	320	-2.7%	20.8%

Degrees Conferred by Department and Program School of Visual and Performing Arts

	FISCAL YR 2006-07	FISCAL YR 2007-08	FISCAL YR 2008-09	FISCAL YR 2009-10	FISCAL YR 2010-11	1-YEAR CHANGE	5-YEAR CHANGE
DEGREES CONFERRED							
Design							
Graphic Comm (UG)	14	20	11	10	11	10.0%	-21.4%
Graphic Comm (GR)	11	18	10	11	4	-63.6%	-63.6%
Industrial Design (UG)	9	5	3	3	9	200.0%	0.0%
Interior Design (UG)	37	24	25	25	35	40.0%	-5.4%
Visual Comm (UG)	28	38	25	27	23	-14.8%	-17.9%
Design Total:	99	105	74	76	82	7.9%	-17.2%
Fine Arts							
Art History (UG)	6	4	3	7	3	-57.1%	-50.0%
Fine Arts (UG)	29	25	22	22	24	9.1%	-17.2%
Fine Arts Edu (GR)	19	22	19	14	15	7.1%	-21.1%
Studio Art (UG)	6	11	9	8	8	0.0%	33.3%
Fine Arts Total:	60	62	53	51	50	-2.0%	-16.7%
Music							
Music (UG)	4	5	6	11	4	-63.6%	0.0%
Music Edu. (UG)	3	2	2	2	1	-50.0%	-66.7%
Music Total:	7	7	8	13	5	-61.5%	-28.6%
Theatre							
Speech & Theatre (UG)	0	2	0	0	0		
Theatre (UG)	4	7	9	11	11	0.0%	175.0%
Theatre Design & Tech. (UG)	0	2	1	2	1	-50.0%	
Theatre Performance (UG)	0	2	4	5	2	-60.0%	
Theatre Total:	4	13	14	18	14	-22.2%	250.0%
VPA Other							
Liberal Studies (GR)	5	6	6	6	5	-16.7%	0.0%
VPA Other Total:	5	6	6	6	5	-16.7%	0.0%
<i>VPA UG Total:</i>	<i>140</i>	<i>147</i>	<i>120</i>	<i>133</i>	<i>132</i>	<i>-0.8%</i>	<i>-5.7%</i>
<i>VPA GR Total:</i>	<i>35</i>	<i>46</i>	<i>35</i>	<i>31</i>	<i>24</i>	<i>-22.6%</i>	<i>-31.4%</i>
VPA Total:	175	193	155	164	156	-4.9%	-10.9%

Degrees Conferred by Department and Program Nathan Weiss Graduate College

Degrees Conferred

	FISCAL YR 2006-07	FISCAL YR 2007-08	FISCAL YR 2008-09	FISCAL YR 2009-10	FISCAL YR 2010-11	1-YEAR CHANGE	5-YEAR CHANGE
DEGREES CONFERRED							
Adv Stu Psyc							
School Psychology (GR)	12	9	10	10	9	-10.0%	-25.0%
Adv Stu Psyc Total:	12	9	10	10	9	-10.0%	-25.0%
Counselor Edu							
Counselor Edu (GR)	41	46	56	46	64	39.1%	56.1%
Counselor Edu Total:	41	46	56	46	64	39.1%	56.1%
Edu Leadership							
Edu Admin. (GR)	96	91	89	84	70	-16.7%	-27.1%
Edu Leadership Total:	96	91	89	84	70	-16.7%	-27.1%
Grad Mgmt Studies							
MBA in Global Management (GR)	3	17	52	31	34	9.7%	1033.3%
MIS (GR)	10	16	2	4	3	-25.0%	-70.0%
Grad Mgmt Studies Total:	13	33	54	35	37	5.7%	184.6%
Occupational Therapy - GR							
Occupational Therapy (UG)	1	0	0	0	0		-100.0%
Occupational Therapy (GR)	12	18	29	29	31	6.9%	158.3%
Occupational Therapy - GR Total:	13	18	29	29	31	6.9%	138.5%
Social Work - Graduate							
Social Work (GR)	46	41	42	53	54	1.9%	17.4%
Social Work - Graduate Total:	46	41	42	53	54	1.9%	17.4%
<i>NWGC UG Total:</i>	<i>1</i>	<i>0</i>	<i>0</i>	<i>0</i>	<i>0</i>		<i>-100.0%</i>
<i>NWGC GR Total:</i>	<i>220</i>	<i>238</i>	<i>280</i>	<i>257</i>	<i>265</i>	<i>3.1%</i>	<i>20.5%</i>
NWGC Total:	221	238	280	257	265	3.1%	19.9%

Degrees Conferred by Department and Program Other Academic Unit

	FISCAL Yr 2006-07	FISCAL Yr 2007-08	FISCAL Yr 2008-09	FISCAL Yr 2009-10	FISCAL Yr 2010-11	1-YEAR CHANGE	5-YEAR CHANGE
DEGREES CONFERRED							
NJCSTM							
Biotechnology (GR)	8	4	8	14	5	-64.3%	-37.5%
Science & Tech. (UG)	0	10	17	26	21	-19.2%	
Science & Tech. (GR)	0	0	4	3	6	100.0%	
NJCSTM Total:	8	14	29	43	32	-25.6%	300.0%
<i>OthAcad UG Total:</i>	<i>0</i>	<i>10</i>	<i>17</i>	<i>26</i>	<i>21</i>	<i>-19.2%</i>	
<i>OthAcad GR Total:</i>	<i>8</i>	<i>4</i>	<i>12</i>	<i>17</i>	<i>11</i>	<i>-35.3%</i>	<i>37.5%</i>
OthAcad Total:	8	14	29	43	32	-25.6%	300.0%



Kean University - Employees



Employees

Page 36

At-a-Glance

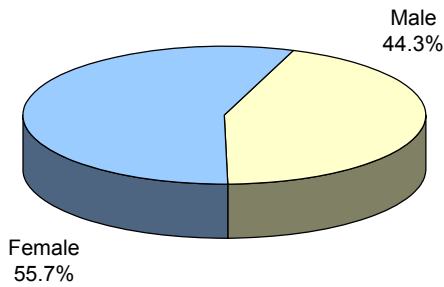
Fall 2011 Employee Demographics

	TOTAL		FACULTY		STAFF	
	TOTAL	%	#	%	#	%
TOTAL FULL-TIME	1,034	100.0%	341	100.0%	693	100.0%
GENDER						
Male	458	44.3%	172	50.4%	286	41.3%
Female	576	55.7%	169	49.6%	407	58.7%
RACE / ETHNICITY						
Black	206	19.9%	34	10.0%	172	24.8%
Hispanic	182	17.6%	22	6.5%	160	23.1%
Asian	90	8.7%	44	12.9%	46	6.6%
White	550	53.2%	240	70.4%	310	44.7%
Multi-race	3	0.3%			3	0.4%
Not Reported	3	0.3%	1	0.3%	2	0.3%
EMPLOYEE GROUP						
Faculty	341	33.0%	341	100.0%		
Administrative & Managerial	129	12.5%			129	18.6%
Professional	253	24.5%			253	36.5%
Clerk & Secretarial	129	12.5%			129	18.6%
Technical & Paraprofessional	19	1.8%			19	2.7%
Service Maintenance	120	11.6%			120	17.3%
Skilled Crafts	43	4.2%			43	6.2%
AGE						
< 30	60	5.8%	0	0.0%	60	8.7%
30 - 39	187	18.1%	40	11.7%	147	21.2%
40 - 49	249	24.1%	70	20.5%	179	25.8%
50 - 59	273	26.4%	88	25.8%	185	26.7%
60 - 69	216	20.9%	111	32.6%	105	15.2%
70 +	49	4.7%	32	9.4%	17	2.5%
Average Age	50	-	56	-	47	-
PART TIME EMPLOYEES	44	-	23	-	21	-
ADJUNCT FACULTY	1,099	-	1,099	-		

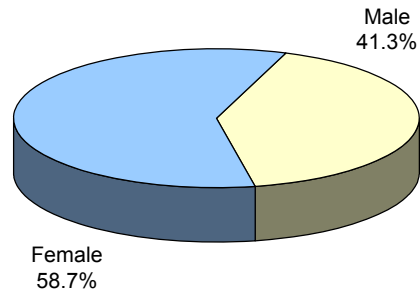
* Numbers represent full-time faculty and staff only, unless otherwise noted.

Additional information is available online at <http://ir.kean.edu>.

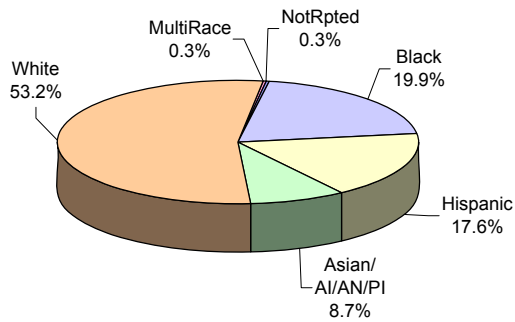
**FULL-TIME EMPLOYEES
By Gender**



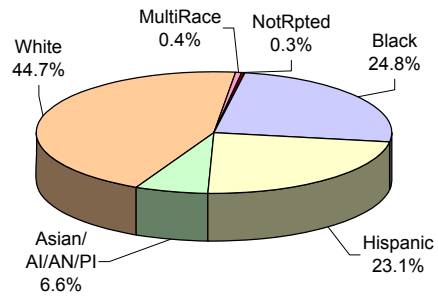
**FULL-TIME STAFF
By Gender**



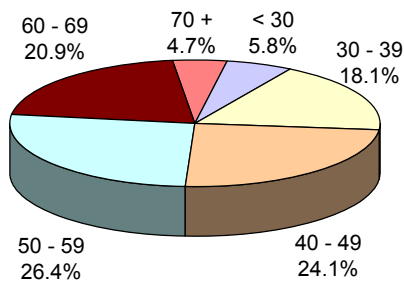
**FULL-TIME EMPLOYEES
By Race/Ethnicity**



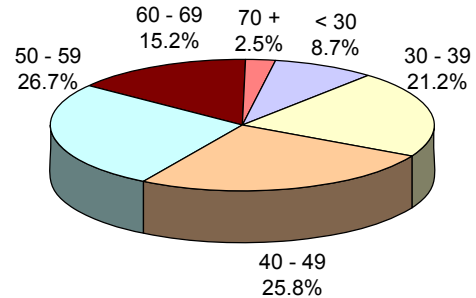
**FULL-TIME STAFF
By Race/Ethnicity**



**FULL-TIME EMPLOYEES
By Age Group**



**FULL-TIME STAFF
By Age Group**



The charts for full-time faculty are located in the “Faculty” section.



Kean University – Faculty

Faculty

Page 40	At-a-Glance
Page 42	Faculty Trends
Page 44	Full-Time Faculty by Department College of Business and Public Management College of Education
Page 45	Full-Time Faculty by Department College of Humanities and Social Sciences College of Natural, Applied, and Health Sciences
Page 46	Full-Time Faculty by Department School of Visual and Performing Arts Nathan Weiss Graduate College Other Academic Unit
Page 47	Distribution of Full-Time Faculty by Age



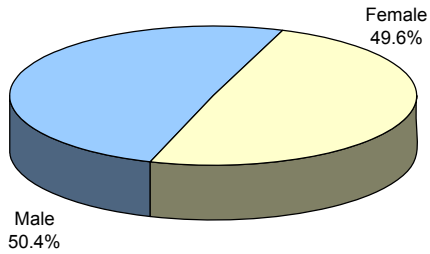
Fall 2011 Faculty Demographics

	UNIVERSITY		COLLEGES						
	TOTAL	%	BPA	EDU	HSS	NAHS	NWGC	VPA	OTHER ACAD
TOTAL FULL-TIME	341	100.0%	42	62	100	64	31	34	8
GENDER									
Male	172	50.4%	27	21	52	39	10	19	4
Female	169	49.6%	15	41	48	25	21	15	4
RACE / ETHNICITY									
Black	34	10.0%	4	6	12	6	4	2	0
Hispanic	22	6.5%	3	6	7	3	1	2	0
Asian	44	12.9%	11	3	8	15	3	1	3
White	240	70.4%	24	47	72	40	23	29	5
Not Reported	1	0.3%	0	0	1	0	0	0	0
TENURE STATUS									
Tenured	261	76.5%	28	51	80	54	13	32	3
Tenure Track	63	18.5%	13	10	12	7	14	2	5
Not on Tenure Track	17	5.0%	1	1	8	3	4	0	0
RANK									
Professor	113	33.1%	11	21	37	25	3	16	0
Associate Professor	86	25.2%	12	19	21	15	8	8	3
Assistant Professor	133	39.0%	19	21	34	24	20	10	5
Lecturer	9	2.6%	0	1	8	0	0	0	0
EDUCATION									
Highest Degree									
Doctorate	292	85.6%	35	57	92	55	28	17	8
Master's	49	14.4%	7	5	8	9	3	17	0
Terminal Degree in Field	309	90.6%	37	58	94	55	28	29	8
AGE									
Average Age	56	-	54	60	56	54	51	54	40
Faculty >= 60	143	41.9%	17	38	47	22	8	11	0
PART-TIME FACULTY	23	-	0	23	0	0	0	0	0
ADJUNCT FACULTY	1099	-							

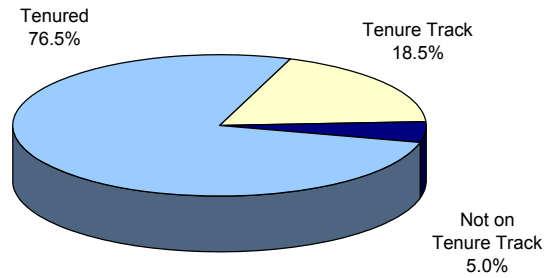
* Numbers represent full-time faculty only, unless otherwise noted.

Additional information is available online at <http://ir.kean.edu>.

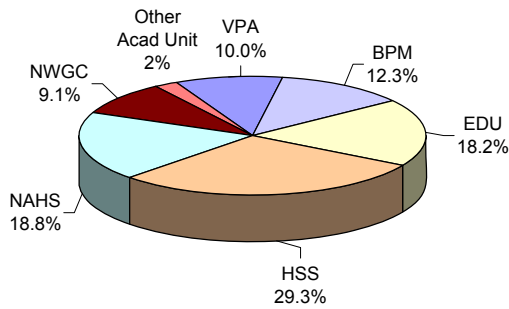
**FULL-TIME FACULTY
By Gender**



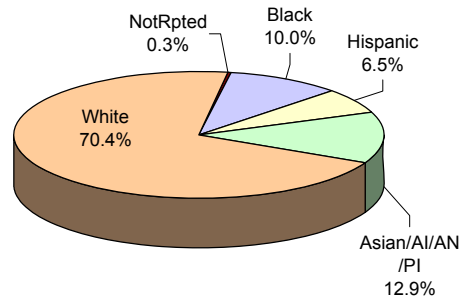
**FULL-TIME FACULTY
By Tenure Status**



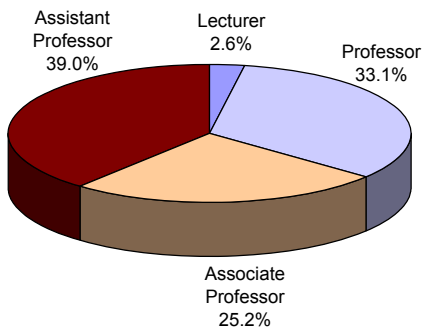
**FULL-TIME FACULTY
By College**



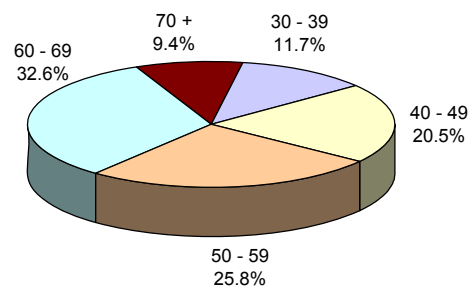
**FULL-TIME FACULTY
By Race/Ethnicity**



**FULL-TIME FACULTY
By Rank**



**FULL-TIME FACULTY
By Age Group**

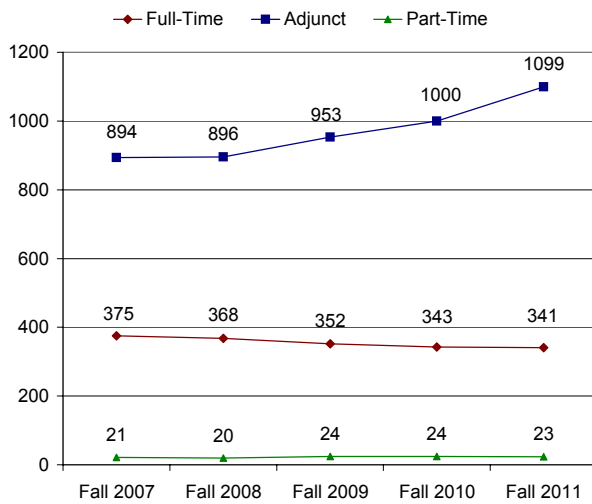


Faculty Trends (Fall 2007 - Fall 2011)

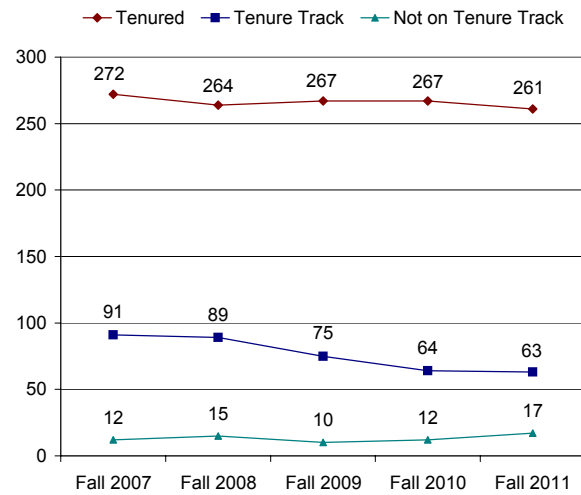
	FALL 2007	FALL 2008	Fall 2009	Fall 2010	Fall 2011	1-YEAR CHANGE	5-YEAR CHANGE
TOTAL FULL-TIME	375	368	352	343	341	-0.6%	-9.1%
GENDER							
Male	199	201	189	179	172	-3.9%	-13.6%
Female	176	167	163	164	169	3.0%	-4.0%
RACE / ETHNICITY							
Black	40	38	34	33	34	3.0%	-15.0%
Hispanic	30	29	26	25	22	-12.0%	-26.7%
Asian	38	40	39	39	44	12.8%	15.8%
White	265	260	252	245	240	-2.0%	-9.4%
Not Reported	2	1	1	1	1	0.0%	-50.0%
TENURE STATUS							
Tenured	272	264	267	267	261	-2.2%	-4.0%
Tenure Track	91	89	75	64	63	-1.6%	-30.8%
Not on Tenure Track	12	15	10	12	17	41.7%	41.7%
RANK							
Professor	138	138	130	123	113	-8.1%	-18.1%
Associate Professor	90	85	84	87	86	-1.1%	-4.4%
Assistant Professor	143	137	132	127	133	4.7%	-7.0%
Instructor	4	8	6	6	0	-100.0%	-100.0%
Lecturer	0	0	0	0	9		
EDUCATION							
Highest Degree							
Doctorate	320	313	302	292	292	0.0%	-8.8%
Master's	55	55	50	50	49	-2.0%	-10.9%
Not Reported	0	0	0	1	0	-100.0%	
Terminal Degree in Field	340	333	323	313	309	-1.3%	-9.1%
AGE							
Average Age	54.42	55.22	55.77	55.89	55.53	-0.6%	2.0%
Faculty >= 60	147	153	155	150	143	-4.7%	-2.7%
PART-TIME FACULTY	21	20	24	24	23	-4.2%	9.5%
ADJUNCT FACULTY	894	896	953	1,000	1,099	9.9%	22.9%

* Numbers represent full-time faculty only, unless otherwise noted.

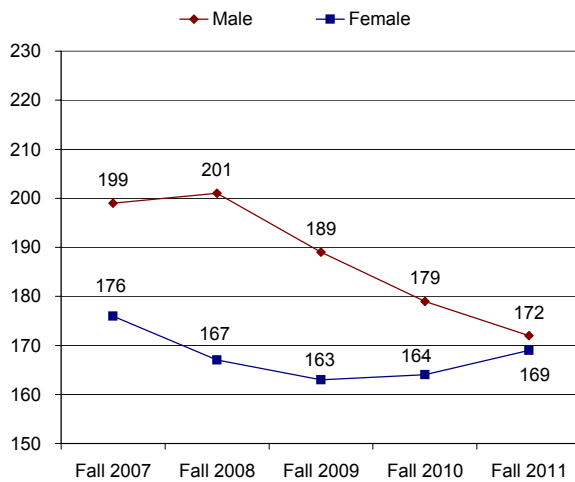
FACULTY HEADCOUNT Fall 2007 - Fall 2011



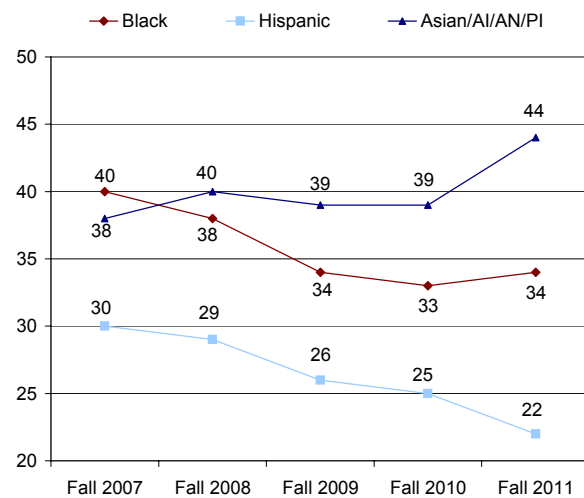
TENURE STATUS Fall 2007 - Fall 2011



GENDER Fall 2007 - Fall 2011



MINORITY FACULTY HEADCOUNT Fall 2007 - Fall 2011



Full-Time Faculty by Department College of Business and Public Management

	FALL 2007	FALL 2008	FALL 2009	FALL 2010	FALL 2011	1-YEAR CHANGE	5-YEAR CHANGE
NUMBER OF FACULTY							
CrimJust/PubAdm	13	14	14	13	14	7.7%	7.7%
Accounting/Finance	13	13	14	13	13	0.0%	0.0%
Mgmt/Marketing	17	16	14	14	15	7.1%	-11.8%
BPM Faculty Total:	43	43	42	40	42	5.0%	-2.3%

Full-Time Faculty by Department College of Education

	FALL 2007	FALL 2008	FALL 2009	FALL 2010	FALL 2011	1-YEAR CHANGE	5-YEAR CHANGE
NUMBER OF FACULTY							
Comm Disorder/Deaf	8	7	7	8	8	0.0%	0.0%
Phys Ed/Rec/Health	16	16	16	16	16	0.0%	0.0%
Global Edu Innovation	8	5	3	4	4	0.0%	-50.0%
Special Edu/Literacy	20	19	15	11	11	0.0%	-45.0%
Curriculum Teaching	29	25	24	24	23	-4.2%	-20.7%
EDU Faculty Total:	81	72	65	63	62	-1.6%	-23.5%

Full-Time Faculty by Department College of Humanities and Social Sciences

	FALL 2007	FALL 2008	FALL 2009	FALL 2010	FALL 2011	1-YEAR CHANGE	5-YEAR CHANGE
NUMBER OF FACULTY							
Communication	12	12	12	12	12	0.0%	0.0%
English	25	26	25	21	21	0.0%	-16.0%
History	12	14	16	15	14	-6.7%	16.7%
Psychology	20	18	15	17	16	-5.9%	-20.0%
Social Work	6	5	3	3	2	-33.3%	-66.7%
Gen Studies	7	6	0	4	9	125.0%	28.6%
HSS Other	0	0	0	1	1	0.0%	
Social Sciences	25	27	30	28	25	-10.7%	0.0%
HSS Faculty Total:	107	108	101	101	100	-1.0%	-6.5%

Full-Time Faculty by Department College of Natural, Applied, and Health Sciences

	FALL 2007	FALL 2008	FALL 2009	FALL 2010	FALL 2011	1-YEAR CHANGE	5-YEAR CHANGE
NUMBER OF FACULTY							
Nursing	9	8	7	8	9	12.5%	0.0%
Mathematics	13	13	13	17	15	-11.8%	15.4%
Computer Science	15	15	13	8	7	-12.5%	-53.3%
Env & Life Sci	0	0	1	1	1	0.0%	
Natural Sciences	37	38	35	34	31	-8.8%	-16.2%
Sustainability Studies	0	0	0	0	1		
NAHS Faculty Total:	74	74	69	68	64	-5.9%	-13.5%

Full-Time Faculty by Department School of Visual and Performing Arts

	FALL 2007	FALL 2008	FALL 2009	FALL 2010	FALL 2011	1-YEAR CHANGE	5-YEAR CHANGE
NUMBER OF FACULTY							
Design	13	14	12	11	10	-9.1%	-23.1%
Fine Arts	14	14	14	13	11	-15.4%	-21.4%
Music	7	7	7	7	7	0.0%	0.0%
Theatre	6	6	7	7	6	-14.3%	0.0%
VPA Faculty Total:	40	41	40	38	34	-10.5%	-15.0%

Full-Time Faculty by Department Nathan Weiss Graduate College

	FALL 2007	FALL 2008	FALL 2009	FALL 2010	FALL 2011	1-YEAR CHANGE	5-YEAR CHANGE
NUMBER OF FACULTY							
Edu Leadership	7	7	7	5	6	20.0%	-14.3%
Counselor Edu	5	6	5	5	7	40.0%	40.0%
Grad Mgmt Studies	3	3	3	4	5	25.0%	66.7%
Adv Stu Psyc	0	0	2	3	4	33.3%	
Social Work - Graduate	5	4	6	5	4	-20.0%	-20.0%
Occupational Therapy - GR	4	4	3	3	5	66.7%	25.0%
NWGC Faculty Total:	24	24	26	25	31	24.0%	29.2%

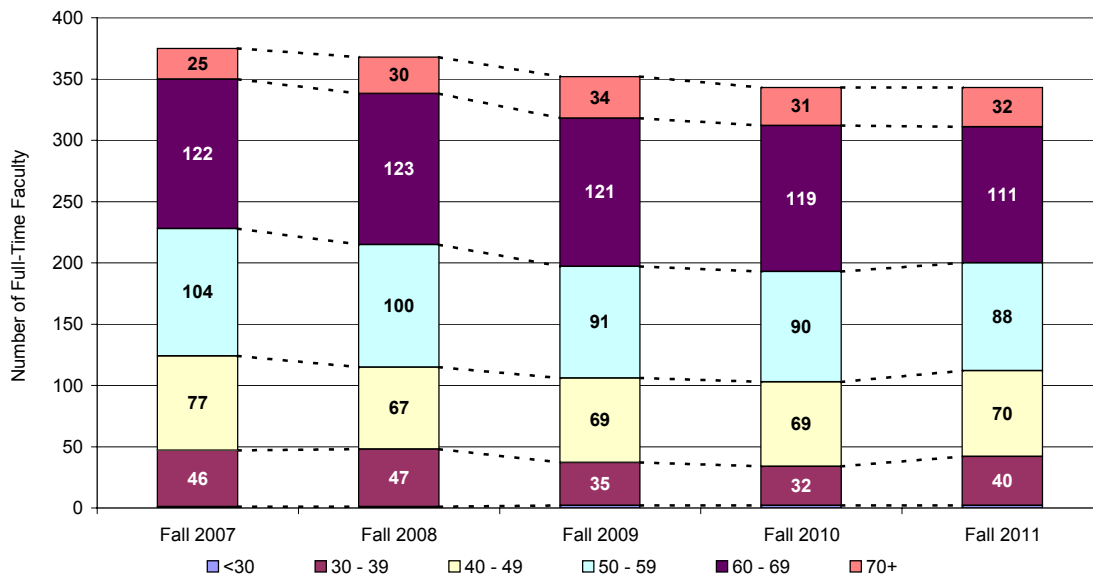
Full-Time Faculty by Department Other Academic Unit

	FALL 2007	FALL 2008	FALL 2009	FALL 2010	FALL 2011	1-YEAR CHANGE	5-YEAR CHANGE
NUMBER OF FACULTY							
NJCSTM	6	6	6	8	8	0.0%	33.3%
OthAcad Faculty Total:	6	6	6	8	8	0.0%	33.3%

Distribution of Full-Time Faculty by Age

	FALL 2007	FALL 2008	FALL 2009	FALL 2010	FALL 2011		5-YEAR CHANGE
					No.	%	
AGE							
< 30	1	1	2	2	0	0.0%	-100.0%
30 - 39	46	47	35	32	40	11.7%	-13.0%
40 - 49	77	67	69	69	70	20.5%	-9.1%
50 - 59	104	100	91	90	88	25.8%	-15.4%
60 - 69	122	123	121	119	111	32.6%	-9.0%
70 +	25	30	34	31	32	9.4%	28.0%
TOTAL	375	368	352	343	341	100.0%	-9.1%
AVERAGE AGE	54.42	55.22	55.77	55.89	55.53		2.0%

Distribution of Full-Time Faculty by Age Group Fall 2007 - Fall 2011





Office of Institutional Research
Kean University
1000 Morris Avenue
Union, New Jersey 07083
<http://ir.kean.edu>
908.737.3470