

*Student and Faculty
Profile*



Kean University



WORLD-CLASS
EDUCATION

KEAN



Fall 2010

Office of Institutional Research

Quick Facts

Founded:	1855	President:	Dr. Dawood Farahi
Campus Size:	185.4 acres	Mailing Address:	1000 Morris Avenue Union, New Jersey 07083
Main Campus:	121.5 acres		
East Campus:	28.5 acres		
Liberty Hall Campus:	35.4 acres	Main Phone:	(908) 737-KEAN (908) 737-5326
Number of Colleges:	6		
		Admissions:	(908) 737-7100
Degree Programs Offered			
Undergraduate:	48	Public Info:	(908) 737-NEWS (908) 737-6397
Graduate			
- Master:	31		
- Post Master Professional Diploma:	2		
- Doctor:	2		
Average Class Size:	21		
Student/Faculty Ratio:	19:1		
2010-2011 Tuition and Fees:			
(Full-Time, In-State)			
Uundergraduate:	\$9,814.50		
Graduate:	\$13,612.80		
Doctor:	\$15,362.00		

Contents

<i>Enrollment</i>	<i>Page 01</i>
<i>Degrees Conferred</i>	<i>Page 25</i>
<i>Employees</i>	<i>Page 35</i>
<i>Faculty</i>	<i>Page 39</i>



Kean University- Enrollment

Enrollment

Page 02	At-a-Glance
Page 04	Enrollment Trends
Page 06	Enrollment by Geographic Origin
Page 08	Retention & Graduation Rates
Page 10	Enrollment by Department and Program
Page 17	Second Majors by Program
Page 18	Course FTE

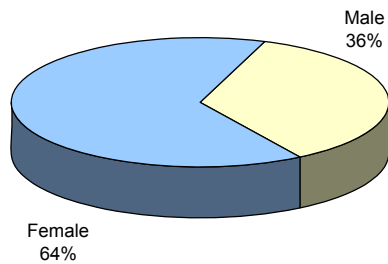


Fall 2010 Enrollment At-a-Glance

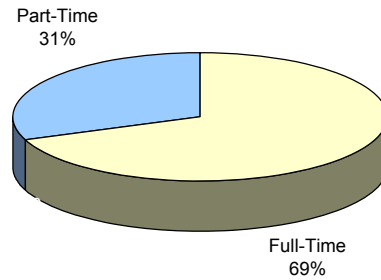
	UNIVERSITY		UNDERGRADUATE		GRADUATE	
	No.	%	No.	%	No.	%
ENROLLMENT						
Headcount	15,939	100%	13,052	100%	2,887	100%
F.T.E.	12015.2		10445.5		1569.7	
GENDER						
Male	5,673	35.6%	5,053	38.7%	620	21.5%
Female	10,266	64.4%	7,999	61.3%	2,267	78.5%
RACE / ETHNICITY						
Black	2,989	18.8%	2,463	18.9%	526	18.2%
Hispanic	3,344	21.0%	2,948	22.6%	396	13.7%
Asian	1,114	7.0%	946	7.2%	168	5.8%
White	7,907	49.6%	6,182	47.4%	1,725	59.8%
MultiRace	122	0.8%	108	0.8%	14	0.5%
Not Reported	463	2.9%	405	3.1%	58	2.0%
ATTENDANCE STATUS						
Full-Time	11,031	69.2%	10,178	78.0%	853	29.5%
Part-Time	4,908	30.8%	2,874	22.0%	2,034	70.5%
ADMISSIONS STATUS						
Regular	6,725	42.2%	4,301	33.0%	2,424	84.0%
Special	1,413	8.9%	1,413	10.8%		
E.O.F.	806	5.1%	806	6.2%		
Transfer	6,083	38.2%	6,083	46.6%		
E.O.F. Transfer	324	2.0%	324	2.5%		
Other	588	3.7%	125	1.0%	463	16.0%
REGISTRATION STATUS						
First-Time	2,948	18.5%	1,829	14.0%	1,119	38.8%
Transfer	1,914	12.0%	1,914	14.7%		
Stop-out / Readmit	588	3.7%	588	4.5%		
Continuing	10,489	65.8%	8,721	66.8%	1,768	61.2%
AGE						
<25	9,832	61.7%	9,281	71.1%	551	19.1%
25 - 34	3,761	23.6%	2,463	18.9%	1,298	45.0%
35 - 44	1,278	8.0%	769	5.9%	509	17.6%
45 - 54	831	5.2%	444	3.4%	387	13.4%
55+	237	1.5%	95	0.7%	142	4.9%
Average Age	26		24		34	
MATRICULATION STATUS						
Degree Seeking	14,630	91.8%	12,671	97.1%	1,959	67.9%
Certificate / Non-Degree	763	4.8%	283	2.2%	480	16.6%
Non-Matriculated	546	3.4%	98	0.8%	448	15.5%
STATE RESIDENCE						
New Jersey	15,364	96.4%	12,615	96.7%	2,749	95.2%
Out-of-State	304	1.9%	238	1.8%	66	2.3%
International	271	1.7%	199	1.5%	72	2.5%

Additional information is available online at <http://ir.kean.edu>.

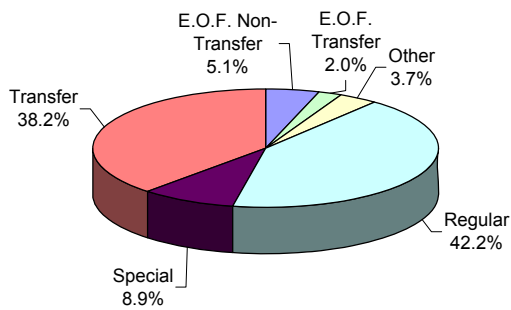
**DISTRIBUTION OF STUDENTS
By Gender**



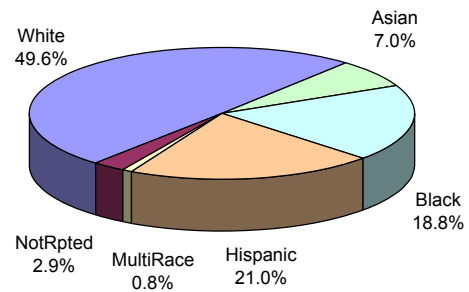
**DISTRIBUTION OF STUDENTS
By Attendance Status**



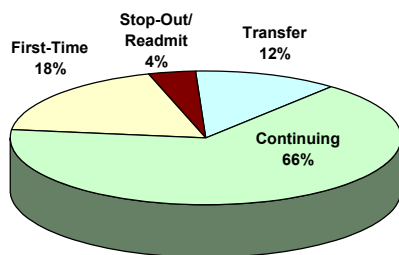
**DISTRIBUTION OF STUDENTS
By Admit Status**



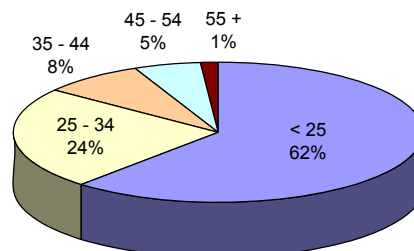
**DISTRIBUTION OF STUDENTS
By Race/Ethnicity**



**DISTRIBUTION OF STUDENTS
By Registration Status**



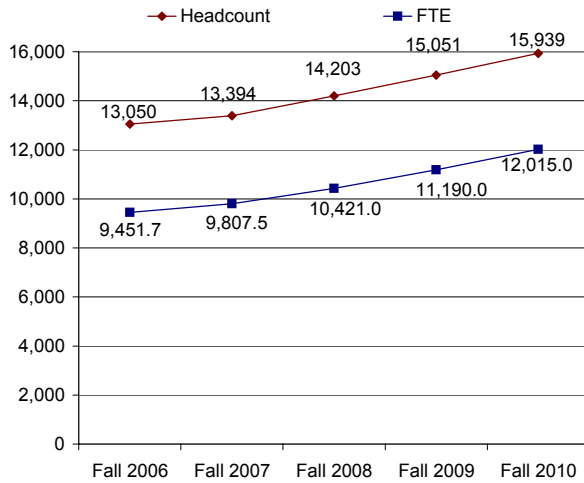
**DISTRIBUTION OF STUDENTS
By Age Group**



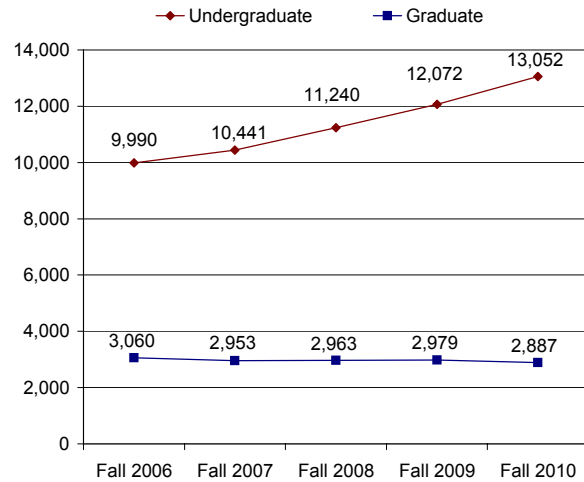
Enrollment Trends (Fall 2006 - Fall 2010)

	FALL 2006	FALL 2007	FALL 2008	FALL 2009	FALL 2010	1 YEAR CHANGE	5 YEAR CHANGE
ENROLLMENT							
Headcount	13,050	13,394	14,203	15,051	15,939	5.9%	22.1%
F.T.E.	9451.7	9807.5	10421.0	11189.7	12015.2	7.4%	27.1%
Undergraduate	9,990	10,441	11,240	12,072	13,052	8.1%	30.7%
Graduate	3,060	2,953	2,963	2,979	2,887	-3.1%	-5.7%
GENDER							
Male	4,343	4,515	4,846	5,300	5,673	7.0%	30.6%
Female	8,707	8,879	9,357	9,751	10,266	5.3%	17.9%
RACE / ETHNICITY							
Black	2,525	2,570	2,745	2,804	2,989	6.6%	18.4%
Hispanic	2,271	2,405	2,634	2,909	3,344	15.0%	47.2%
Asian	810	809	901	1,083	1,114	2.9%	37.5%
White	6,866	6,985	7,232	7,511	7,907	5.3%	15.2%
MultiRace	0	0	0	0	122		
Not Reported	578	625	691	744	463	-37.8%	-19.9%
ATTENDANCE STATUS							
Full-Time	8,250	8,590	9,181	10,081	11,031	9.4%	33.7%
Part-Time	4,800	4,804	5,022	4,970	4,908	-1.2%	2.3%
ADMISSIONS STATUS							
Regular	6,488	6,412	6,425	6,432	6,725	4.6%	3.7%
Special	517	724	930	1,127	1,413	25.4%	173.3%
E.O.F.	834	921	937	918	806	-12.2%	-3.4%
Transfer	4,125	4,366	4,895	5,475	6,083	11.1%	47.5%
E.O.F. Transfer	207	246	273	323	324	0.3%	56.5%
Other	879	725	743	776	588	-24.2%	-33.1%
REGISTRATION STATUS							
First-Time	2,724	2,563	2,624	2,870	2,948	2.7%	8.2%
Transfer	1,256	1,278	1,497	1,733	1,914	10.4%	52.4%
Stop-out / Readmit	444	531	604	583	588	0.9%	32.4%
Continuing	8,626	9,022	9,478	9,865	10,489	6.3%	21.6%
AGE							
<25	7,425	7,753	8,226	8,953	9,832	9.8%	32.4%
25 - 34	3,048	3,129	3,446	3,638	3,761	3.4%	23.4%
35 - 44	1,395	1,342	1,351	1,309	1,278	-2.4%	-8.4%
45 - 54	930	893	913	872	831	-4.7%	-10.6%
55+	252	277	267	279	237	-15.1%	-6.0%
Average Age	27.27	27.04	26.93	26.59	26.10	-1.8%	-4.3%
MATRICULATION STATUS							
Degree Seeking	11,600	12,062	12,830	13,643	14,630	7.2%	26.1%
Certificate / Non-Degree	613	638	656	717	763	6.4%	24.5%
Non-Matriculated	837	694	717	691	546	-21.0%	-34.8%
STATE RESIDENCE							
New Jersey	12,544	12,888	13,680	14,494	15,364	6.0%	22.5%
Out-of-State	237	230	246	275	304	10.5%	28.3%
International	268	276	277	282	271	-3.9%	1.1%
Not Reported	1	0	0	0	0		

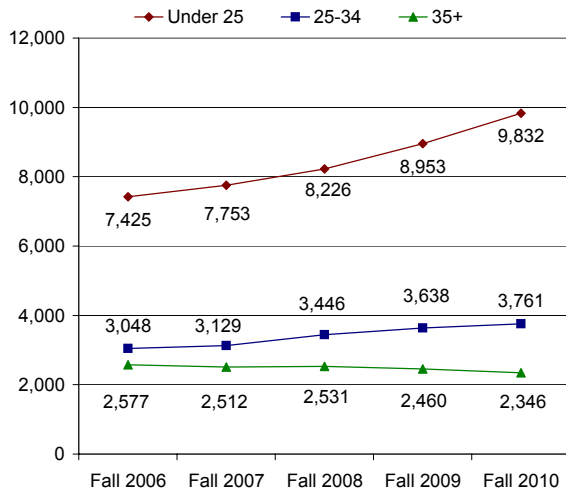
HEADCOUNT & FTE Fall 2006 - Fall 2010



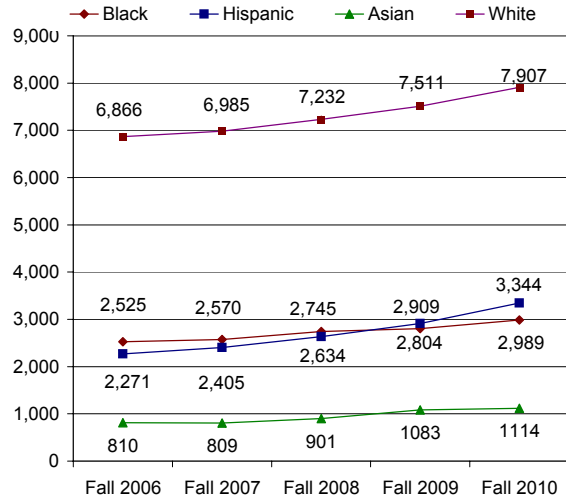
UNDERGRADUATE & GRADUATE Fall 2006 - Fall 2010



AGE GROUP Fall 2006 - Fall 2010



RACE/ETHNICITY Fall 2006 - Fall 2010



Enrollment by Geographic Origin

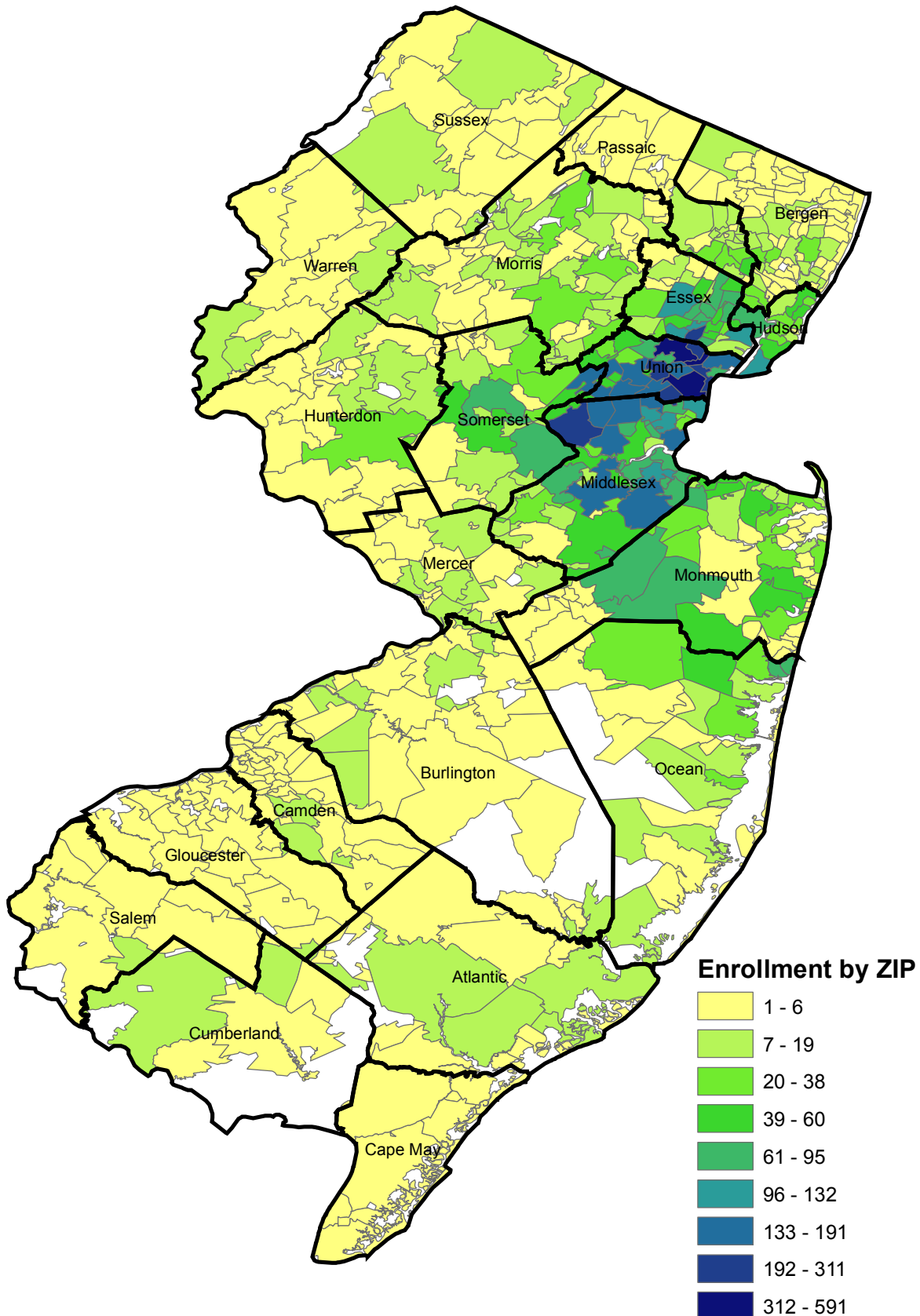
	FALL 2006	FALL 2007	FALL 2008	FALL 2009	FALL 2010		5-YEAR CHANGE
					No.	%	
NEW JERSEY RESIDENTS	12,544	12,888	13,680	14,494	15,364	96.4%	22.5%
Union	3,633	3,692	3,752	3,819	3,946	24.8%	8.6%
Middlesex	3,000	3,049	3,263	3,277	3,431	21.5%	14.4%
Essex	1,518	1,523	1,655	1,734	1,802	11.3%	18.7%
Ocean	521	681	940	1,219	1,429	9.0%	174.3%
Monmouth	925	930	904	971	1,041	6.5%	12.5%
Somerset	694	714	769	804	832	5.2%	19.9%
Hudson	504	536	588	628	707	4.4%	40.3%
Bergen	440	443	465	495	562	3.5%	27.7%
Morris	390	383	380	445	448	2.8%	14.9%
Passaic	245	258	262	303	305	1.9%	24.5%
Mercer	118	114	136	155	175	1.1%	48.3%
Hunterdon	126	135	135	150	160	1.0%	27.0%
Burlington	114	106	115	130	133	0.8%	16.7%
Warren	62	60	75	98	109	0.7%	75.8%
Camden	69	77	56	72	76	0.5%	10.1%
Sussex	48	43	51	75	82	0.5%	70.8%
Atlantic	54	51	51	51	56	0.4%	3.7%
Gloucester	34	39	38	38	39	0.2%	14.7%
Cape May	25	18	13	8	11	0.1%	-56.0%
Cumberland	14	22	20	14	12	0.1%	-14.3%
Salem	9	14	12	8	8	0.1%	-11.1%
County Unknown	1	0	0	0	0	0.0%	
NON-RESIDENTS	237	230	246	275	304	1.9%	28.3%
New York	163	159	184	204	218	1.4%	33.7%
Pennsylvania	35	26	25	35	39	0.2%	11.4%
Other	39	45	37	36	47	0.3%	20.5%
INTERNATIONAL	268	276	277	282	271	1.7%	1.1%
NOT REPORTED	1	0	0	0	0	0.0%	
TOTAL	13,050	13,394	14,203	15,051	15,939	100.0%	22.1%

Top 10 Countries of Citizenship for International Students (in alphabetical order)

Bermuda	Brazil
China	Colombia
Ecuador	India
Korea.S	Nigeria
Peru	Poland

International students come from 61 different countries and areas.

Fall 2010 Enrollment by ZIP Code



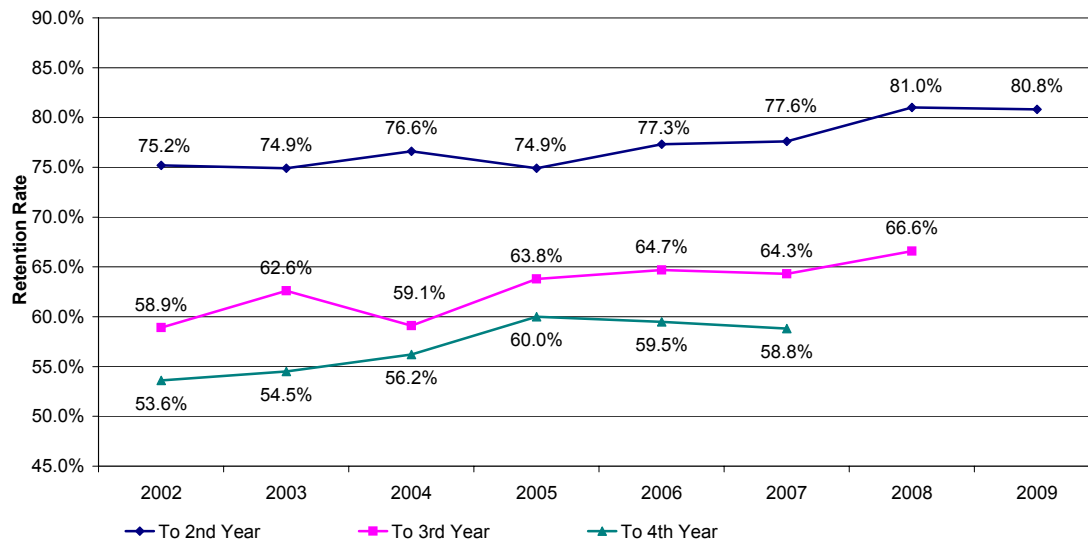
First-Time, Full-Time Freshmen Retention Rates

COHORT YEAR	HEAD COUNT	# CONTINUED			% CONTINUED		
		TO 2ND YEAR	TO 3RD YEAR	TO 4TH YEAR	TO 2ND YEAR	TO 3RD YEAR	TO 4TH YEAR
2000	1,161	922	749	679	79.41%	64.51%	58.48%
2001	1,132	871	685	605	76.94%	60.51%	53.45%
2002	1,317	991	776	706	75.25%	58.92%	53.61%
2003	1,311	982	821	714	74.90%	62.62%	54.46%
2004	1,254	961	741	705	76.63%	59.09%	56.22%
2005	1,391	1,042	887	835	74.91%	63.77%	60.03%
2006	1,394	1,078	902	829	77.33%	64.71%	59.47%
2007	1,447	1,123	930	851	77.61%	64.27%	58.81%
2008	1,418	1,148	945	-	80.96%	66.64%	-
2009	1,518	1,226	-	-	80.76%	-	-

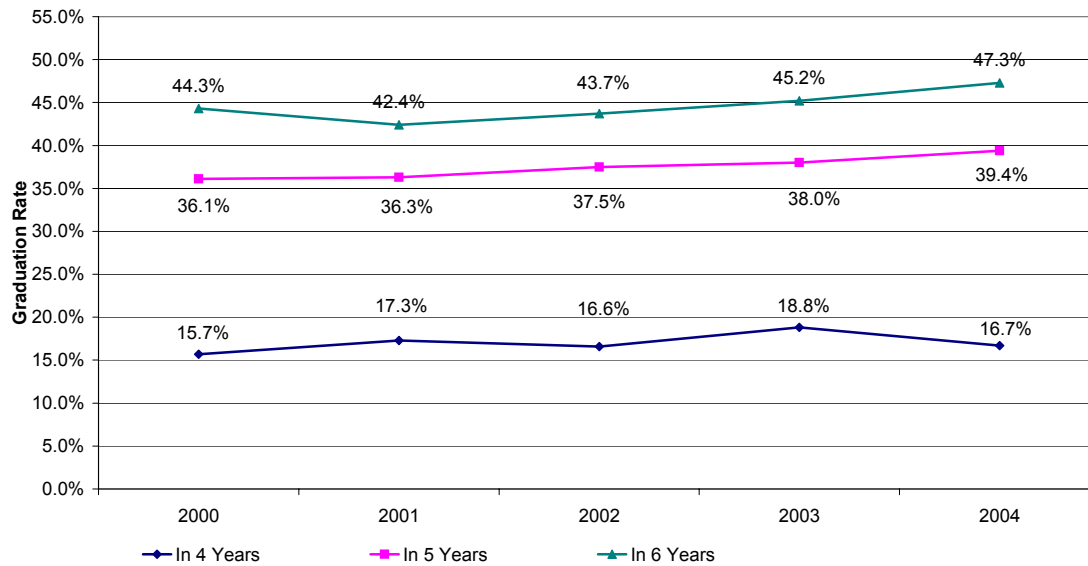
First-Time, Full-Time Freshmen Graduation Rates

COHORT YEAR	HEAD COUNT	# GRADUATED(ACCUMULATED)			% GRADUATED (ACCUMULATED)		
		IN 4 YEARS	IN 5 YEARS	IN 6 YEARS	IN 4 YEARS	IN 5 YEARS	IN 6 YEARS
2000	1,161	182	419	514	15.68%	36.09%	44.27%
2001	1,132	196	411	480	17.31%	36.31%	42.40%
2002	1,317	218	494	575	16.55%	37.51%	43.66%
2003	1,311	247	498	593	18.84%	37.99%	45.23%
2004	1,254	210	494	593	16.75%	39.39%	47.29%

First-Time, Full-Time Degree-Seeking Undergraduate Retention Rates 2002 - 2009 Cohorts



First-Time, Full-Time Degree-Seeking Undergraduate Graduation Rates 2000 - 2004 Cohorts



Enrollment by Department and Program College of Business and Public Administration

	FALL 2006	FALL 2007	FALL 2008	FALL 2009	FALL 2010	1-YEAR CHANGE	5-YEAR CHANGE
ENROLLMENT							
Accounting							
Accounting (UG)	368	433	516	581	598	2.9%	62.5%
Accounting (GR)	88	74	67	72	69	-4.2%	-21.6%
Accounting Total:	456	507	583	653	667	2.1%	46.3%
Criminal Justice							
Criminal Justice (UG)	530	547	621	654	768	17.4%	44.9%
Criminal Justice (GR)	0	0	0	1	3	200.0%	
Criminal Justice Total:	530	547	621	655	771	17.7%	45.5%
Finance							
Finance (UG)	149	171	190	209	188	-10.0%	26.2%
Finance Total:	149	171	190	209	188	-10.0%	26.2%
Management							
Management Sci. (UG)	669	712	767	884	879	-0.6%	31.4%
Management Total:	669	712	767	884	879	-0.6%	31.4%
Marketing							
Marketing (UG)	284	292	294	311	302	-2.9%	6.3%
Marketing Total:	284	292	294	311	302	-2.9%	6.3%
Public Adm							
Public Admin. (UG)	105	118	121	110	142	29.1%	35.2%
Public Admin. (GR)	179	145	138	140	143	2.1%	-20.1%
Public Adm Total:	284	263	259	250	285	14.0%	0.4%
<i>BPA UG Total:</i>	<i>2,105</i>	<i>2,273</i>	<i>2,509</i>	<i>2,749</i>	<i>2,877</i>	<i>4.7%</i>	<i>36.7%</i>
<i>BPA GR Total:</i>	<i>267</i>	<i>219</i>	<i>205</i>	<i>213</i>	<i>215</i>	<i>0.9%</i>	<i>-19.5%</i>
BPA Total:	2,372	2,492	2,714	2,962	3,092	4.4%	30.4%

* Numbers in red represent small programs (undergraduate<50, graduate<30)

Enrollment by Department and Program College of Education

	FALL 2006	FALL 2007	FALL 2008	FALL 2009	FALL 2010	1-YEAR CHANGE	5-YEAR CHANGE
ENROLLMENT							
Comm Disorder/Deaf							
Speech Lang. Pathology (GR)	103	110	125	135	164	21.5%	59.2%
Speech, Lang Hear. Sci. (UG)	129	138	174	205	234	14.1%	81.4%
Comm Disorder/Deaf Total:	232	248	299	340	398	17.1%	71.6%
Counselor Edu							
Counselor Edu (GR)	220	238	236	245	282	15.1%	28.2%
Counselor Edu Total:	220	238	236	245	282	15.1%	28.2%
Early Childhd/Family							
Early Childhood Edu. (UG)	570	585	548	563	581	3.2%	1.9%
Early Childhood Edu. (GR)	102	70	61	60	49	-18.3%	-52.0%
Early Childhd/Family Total:	672	655	609	623	630	1.1%	-6.3%
Elem Ed/Bil Ed							
Elementary Edu (UG)	24	73	160	360	440	22.2%	1733.3%
Instruction & Curriculum (GR)	44	51	56	51	109	113.7%	147.7%
Elem Ed/Bil Ed Total:	68	124	216	411	549	33.6%	707.4%
Global Edu Innovation							
Spanish (UG)	200	212	179	152	154	1.3%	-23.0%
Global Edu Innovation Total:	200	212	179	152	154	1.3%	-23.0%
Mid Sec Ed							
Elem/Mid/Sec Edu (UG)	836	769	716	691	629	-9.0%	-24.8%
Instruction & Curriculum - MSE (GR)	164	142	141	125	128	2.4%	-22.0%
Mid Sec Ed Total:	1,000	911	857	816	757	-7.2%	-24.3%
Phys Ed/Rec/Health							
Athletic Training (UG)	0	51	77	98	124	26.5%	
Exercise Science (GR)	23	22	22	17	17	0.0%	-26.1%
Physical Edu (UG)	476	478	550	695	743	6.9%	56.1%
Recreation Admin. (UG)	58	72	86	89	89	0.0%	53.4%
Phys Ed/Rec/Health Total:	557	623	735	899	973	8.2%	74.7%
Special Edu/Literacy							
Edu/Media/Spec. (GR)	40	24	23	17	7	-58.8%	-82.5%
Educator of Indivs with Disabilities (UG)	214	206	271	394	493	25.1%	130.4%
Reading Spec. (GR)	93	83	76	72	55	-23.6%	-40.9%
Special Edu (GR)	277	317	351	365	355	-2.7%	28.2%
Special Edu/Literacy Total:	624	630	721	848	910	7.3%	45.8%
EDU UG Total:	2,507	2,584	2,761	3,247	3,487	7.4%	39.1%
EDU GR Total:	1,066	1,057	1,091	1,087	1,166	7.3%	9.4%
EDU Total:	3,573	3,641	3,852	4,334	4,653	7.4%	30.2%

* Numbers in red represent small programs (undergraduate<50, graduate<30)

Enrollment by Department and Program

College of Humanities and Social Sciences

	FALL 2006	FALL 2007	FALL 2008	FALL 2009	FALL 2010	1-YEAR CHANGE	5-YEAR CHANGE
ENROLLMENT							
Communication							
Communication (UG)	191	201	199	242	336	38.8%	75.9%
Communication - Broadcast (UG)	91	51	19	7	2	-71.4%	-97.8%
Communication Studies (GR)	16	21	17	14	16	14.3%	0.0%
Media Film (UG)	35	102	154	184	137	-25.5%	291.4%
Communication Total:	333	375	389	447	491	9.8%	47.4%
Economics							
Economics (UG)	175	204	228	132	88	-33.3%	-49.7%
Economics Total:	175	204	228	132	88	-33.3%	-49.7%
English							
English (UG)	315	348	387	433	492	13.6%	56.2%
English Writing (GR)	0	0	0	2	11	450.0%	
English Total:	315	348	387	435	503	15.6%	59.7%
History							
History (UG)	397	401	379	420	451	7.4%	13.6%
History Total:	397	401	379	420	451	7.4%	13.6%
Philosophy/Religion							
Philosophy and Religion (UG)	14	8	13	15	7	-53.3%	-50.0%
Philosophy/Religion Total:	14	8	13	15	7	-53.3%	-50.0%
Political Science							
Political Science (UG)	100	118	139	127	105	-17.3%	5.0%
Political Science (GR)	17	18	16	10	16	60.0%	-5.9%
Political Science Total:	117	136	155	137	121	-11.7%	3.4%
Psychology							
Behavioral Sci (GR)	48	43	38	44	17	-61.4%	-64.6%
Edu Psych (GR)	10	12	10	14	10	-28.6%	0.0%
Marri & Fam Therapy (GR)	31	33	24	18	24	33.3%	-22.6%
Psych Rehab (UG)	41	38	54	50	69	38.0%	68.3%
Psychology (UG)	796	816	833	895	1,101	23.0%	38.3%
Psychology (GR)	0	0	0	5	44	780.0%	
School Psychology (GR)	35	32	32	24	28	16.7%	-20.0%
Psychology Total:	961	974	991	1,050	1,293	23.1%	34.5%
Social Work							
Social Work (UG)	173	213	252	204	64	-68.6%	-63.0%
Social Work Total:	173	213	252	204	64	-68.6%	-63.0%
Sociology/Anthropology							
Soc/SocJust (GR)	0	0	12	24	26	8.3%	
Sociology (UG)	197	242	294	246	299	21.5%	51.8%
Sociology/Anthropology Total:	197	242	306	270	325	20.4%	65.0%
<i>HSS UG Total:</i>	<i>2,525</i>	<i>2,742</i>	<i>2,951</i>	<i>2,955</i>	<i>3,151</i>	<i>6.6%</i>	<i>24.8%</i>
<i>HSS GR Total:</i>	<i>157</i>	<i>159</i>	<i>149</i>	<i>155</i>	<i>192</i>	<i>23.9%</i>	<i>22.3%</i>
HSS Total:	2,682	2,901	3,100	3,110	3,343	7.5%	24.6%

* Numbers in red represent small programs (undergraduate<50, graduate<30)

Enrollment by Department and Program College of Natural, Applied, and Health Sciences

	FALL 2006	FALL 2007	FALL 2008	FALL 2009	FALL 2010	1-YEAR CHANGE	5-YEAR CHANGE
ENROLLMENT							
Biological Sciences							
Biology (UG)	419	479	524	632	797	26.1%	90.2%
Medical Tech. (UG)	59	54	61	71	70	-1.4%	18.6%
Biological Sciences Total:	478	533	585	703	867	23.3%	81.4%
Chemistry/Physics							
Chemistry (UG)	91	90	111	90	100	11.1%	9.9%
Chemistry/Physics Total:	91	90	111	90	100	11.1%	9.9%
Computer Science							
Comp.Integrated Design & Mfg. Tech. (UG)	17	10	1	0	0		
Computer Science (UG)	147	141	132	161	187	16.1%	27.2%
Electronics Tech. (UG)	23	21	15	7	1	-85.7%	-95.7%
Tech.Edu. (UG)	3	1	0	0	0		
Telecomm.Info.Tech. (UG)	28	23	27	24	53	120.8%	89.3%
Computer Science Total:	218	196	175	192	241	25.5%	10.6%
Env & Life Sci							
Env & Life Sci (UG)	0	0	0	0	9		
Env & Life Sci Total:	0	0	0	0	9		
Geology/Meteorology							
Earth Science (UG)	76	82	86	83	96	15.7%	26.3%
Geology/Meteorology Total:	76	82	86	83	96	15.7%	26.3%
Health Info Mgmt							
HIM (UG)	58	42	32	25	25	0.0%	-56.9%
Health Info Mgmt Total:	58	42	32	25	25	0.0%	-56.9%
Mathematics							
Comp/Stat/Math. (GR)	6	6	7	7	7	0.0%	16.7%
Math. Edu. (GR)	13	15	13	10	11	10.0%	-15.4%
Math. Science (UG)	201	236	249	265	307	15.8%	52.7%
Mathematics Total:	220	257	269	282	325	15.2%	47.7%
Nursing							
M.S.N./M.P.A. in Nursing (GR)	18	11	5	6	9	50.0%	-50.0%
Nursing (UG)	253	270	298	287	318	10.8%	25.7%
Nursing (GR)	67	71	89	90	93	3.3%	38.8%
Nursing Total:	338	352	392	383	420	9.7%	24.3%
<i>NAHS UG Total:</i>	<i>1,375</i>	<i>1,450</i>	<i>1,536</i>	<i>1,645</i>	<i>1,963</i>	<i>19.3%</i>	<i>42.8%</i>
<i>NAHS GR Total:</i>	<i>104</i>	<i>103</i>	<i>114</i>	<i>113</i>	<i>120</i>	<i>6.2%</i>	<i>15.4%</i>
NAHS Total:	1,479	1,553	1,650	1,758	2,083	18.5%	40.8%

* Numbers in red represent small programs (undergraduate<50, graduate<30)

Enrollment by Department and Program School of Visual and Performing Arts

	FALL 2006	FALL 2007	FALL 2008	FALL 2009	FALL 2010	1-YEAR CHANGE	5-YEAR CHANGE
ENROLLMENT							
Design							
Graphic Comm (UG)	68	62	60	49	47	-4.1%	-30.9%
Graphic Comm (GR)	31	35	24	16	12	-25.0%	-61.3%
Industrial Design (UG)	29	30	49	54	67	24.1%	131.0%
Interior Design (UG)	141	132	148	156	171	9.6%	21.3%
Visual Comm (UG)	169	166	160	150	174	16.0%	3.0%
Design Total:	438	425	441	425	471	10.8%	7.5%
Fine Arts							
Art History (UG)	18	22	19	15	13	-13.3%	-27.8%
Fine Arts (UG)	135	117	105	121	113	-6.6%	-16.3%
Fine Arts Edu (GR)	52	58	49	48	46	-4.2%	-11.5%
Studio Art (UG)	36	37	31	37	48	29.7%	33.3%
Fine Arts Total:	241	234	204	221	220	-0.5%	-8.7%
Music							
Music (UG)	25	32	39	33	33	0.0%	32.0%
Music Edu. (UG)	36	41	41	43	58	34.9%	61.1%
Music Total:	61	73	80	76	91	19.7%	49.2%
Theatre							
Speech & Theatre (UG)	11	12	6	1	0		
Theatre (UG)	50	59	61	65	61	-6.2%	22.0%
Theatre Design & Tech. (UG)	0	2	3	6	3	-50.0%	
Theatre Performance (UG)	0	6	14	10	17	70.0%	
Theatre Total:	61	79	84	82	81	-1.2%	32.8%
VPA Other							
Liberal Studies (GR)	30	23	20	16	16	0.0%	-46.7%
VPA Other Total:	30	23	20	16	16	0.0%	-46.7%
<i>VPA UG Total:</i>	<i>718</i>	<i>718</i>	<i>736</i>	<i>740</i>	<i>805</i>	<i>8.8%</i>	<i>12.1%</i>
<i>VPA GR Total:</i>	<i>113</i>	<i>116</i>	<i>93</i>	<i>80</i>	<i>74</i>	<i>-7.5%</i>	<i>-34.5%</i>
VPA Total:	831	834	829	820	879	7.2%	5.8%

* Numbers in red represent small programs (undergraduate<50, graduate<30)

Enrollment by Department and Program Nathan Weiss Graduate College

	FALL 2006	FALL 2007	FALL 2008	FALL 2009	FALL 2010	1-YEAR CHANGE	5-YEAR CHANGE
ENROLLMENT							
Doctoral Stu Psyc							
PsyD.School & Clinical Psych (GR_D)	0	0	0	10	17	70.0%	
Doctoral Stu Psyc Total:	0	0	0	10	17	70.0%	
Edu Leadership							
EdD.Urban/Leader (GR_D)	0	0	19	33	45	36.4%	
Edu Admin. (GR)	260	249	288	269	231	-14.1%	-11.2%
Edu Leadership Total:	260	249	307	302	276	-8.6%	6.2%
Grad Mgmt Studies							
MBA in Global Management (GR)	42	96	103	112	96	-14.3%	128.6%
MIS (GR)	34	23	11	6	1	-83.3%	-97.1%
Grad Mgmt Studies Total:	76	119	114	118	97	-17.8%	27.6%
NWGC Other							
Holocaust & Genocide (GR)	5	14	18	20	14	-30.0%	180.0%
NWGC Other Total:	5	14	18	20	14	-30.0%	180.0%
Occupational Therapy - GR							
Occupational Therapy (GR)	61	72	79	77	81	5.2%	32.8%
Occupational Therapy - GR Total:	61	72	79	77	81	5.2%	32.8%
Social Work - Graduate							
Social Work (GR)	88	83	81	113	122	8.0%	38.6%
Social Work - Graduate Total:	88	83	81	113	122	8.0%	38.6%
<i>NWGC GR_D Total:</i>	<i>0</i>	<i>0</i>	<i>19</i>	<i>43</i>	<i>62</i>	<i>44.2%</i>	
<i>NWGC GR Total:</i>	<i>490</i>	<i>537</i>	<i>580</i>	<i>597</i>	<i>545</i>	<i>-8.7%</i>	<i>11.2%</i>
NWGC Total:	490	537	599	640	607	-5.2%	23.9%

* Numbers in red represent small programs (undergraduate<50, graduate<30)

Enrollment by Department and Program Other Academic Unit

	FALL 2006	FALL 2007	FALL 2008	FALL 2009	FALL 2010	1-YEAR CHANGE	5-YEAR CHANGE
ENROLLMENT							
Sci & Tech Edu							
Biotechnology (GR)	21	21	24	26	24	-7.7%	14.3%
Science & Tech. (UG)	68	62	105	106	88	-17.0%	29.4%
Science & Tech. (GR)	0	0	4	5	4	-20.0%	
Sci & Tech Edu Total:	89	83	133	137	116	-15.3%	30.3%
<i>OtherAcad UG Total:</i>	<i>68</i>	<i>62</i>	<i>105</i>	<i>106</i>	<i>88</i>	<i>-17.0%</i>	<i>29.4%</i>
<i>OtherAcad GR Total:</i>	<i>21</i>	<i>21</i>	<i>28</i>	<i>31</i>	<i>28</i>	<i>-9.7%</i>	<i>33.3%</i>
Other Acad Unit Total:	89	83	133	137	116	-15.3%	30.3%

* Numbers in red represent small programs (undergraduate<50, graduate<30)

Second Majors by Program

	FALL 2006	FALL 2007	FALL 2008	FALL 2009	FALL 2010	1-YEAR CHANGE	5-YEAR CHANGE
ENROLLMENT							
English	140	141	191	271	215	-20.7%	53.6%
History	73	73	95	163	156	-4.3%	113.7%
Psychology	183	171	143	145	151	4.1%	-17.5%
Earth Science	40	40	56	65	71	9.2%	77.5%
Spanish	41	36	41	57	50	-12.3%	22.0%
Math. Science	29	20	34	41	40	-2.4%	37.9%
Biology	5	8	12	23	31	34.8%	520.0%
Fine Arts	13	19	16	25	27	8.0%	107.7%
Sociology	43	34	29	28	26	-7.1%	-39.5%
Liberal Studies in Math	15	26	35	42	23	-45.2%	53.3%
Economics	10	11	11	17	13	-23.5%	30.0%
Communication	11	11	11	12	11	-8.3%	0.0%
Liberal Studies in EarthSci	6	7	12	13	7	-46.2%	16.7%
Criminal Justice	3	3	1	6	7	16.7%	133.3%
Finance	3	4	8	4	4	0.0%	33.3%
Art History	2	5	1	2	4	100.0%	100.0%
Political Science	9	6	7	7	3	-57.1%	-66.7%
Public Admin.	0	2	1	4	3	-25.0%	
Liberal Studies in Bio	5	6	7	3	3	0.0%	-40.0%
Philosophy and Religion	1	2	4	3	2	-33.3%	100.0%
Accounting	0	0	0	0	2		
Theatre	2	3	1	0	2		0.0%
Management Sci.	3	2	2	2	1	-50.0%	-66.7%
Recreation Admin.	0	0	0	1	1	0.0%	
Chemistry	1	0	1	1	1	0.0%	0.0%
Computer Science	2	2	1	1	1	0.0%	-50.0%
Electronics Tech.	0	0	0	1	1	0.0%	
Interior Design	1	0	0	0	1		0.0%
Visual Comm	0	0	0	0	1		
Music	0	1	0	3	0		
Media Film	1	0	4	3	0		
Marketing	3	2	0	1	0		
Studio Art	0	0	0	1	0		
Telecomm.Info.Tech.	0	1	0	0	0		
Physical Edu	1	1	1	0	0		
Medical Tech.	0	1	0	0	0		
Liberal Studies in Tech	6	1	1	0	0		
Graphic Comm	0	0	1	0	0		
HIM	0	1	0	0	0		
Educator of Indivs with Disabilities	0	2	1	0	0		
Second Majors Total	652	642	728	945	858	-9.2%	31.6%

Course FTE by Department and Academic Level

College of Business and Public Administration

	FALL 2006	FALL 2007	FALL 2008	FALL 2009	FALL 2010	1-YEAR CHANGE	5-YEAR CHANGE
COURSE FTE							
Accounting	203.9	243.9	247.2	277.0	342.4	23.6%	67.9%
ACCT (UG)	148.7	196.7	202.7	228.0	236.8	3.9%	59.3%
ACCT (GR)	55.3	47.3	44.5	49.0	45.3	-7.7%	-18.1%
BLAW (UG)					60.4		
Criminal Justice	173.1	173.6	205.7	234.6	279.1	19.0%	61.2%
CJ (UG)	168.6	165.3	201.9	232.8	275.6	18.4%	63.4%
CJ (GR)	4.5	8.3	3.8	1.8	3.5	100.0%	-22.2%
Finance	96.6	94.8	133.7	144.2	138.7	-3.8%	43.5%
FIN (UG)	91.9	92.3	127.7	141.2	134.4	-4.8%	46.3%
FIN (GR)	4.8	2.5	6.0	3.0	4.3	41.7%	-10.5%
Management	282.3	357.7	404.0	399.4	310.5	-22.3%	10.0%
MGS (UG)	272.1	342.9	388.5	381.4	297.8	-21.9%	9.4%
MGS (GR)	10.3	14.8	15.5	18.0	12.8	-29.2%	24.4%
Marketing	103.8	119.3	145.2	142.5	171.6	20.4%	65.3%
MKT (UG)	97.3	108.8	140.4	136.5	167.1	22.4%	71.7%
MKT (GR)	6.5	10.5	4.8	6.0	4.5	-25.0%	-30.8%
Public Adm	195.4	169.2	174.3	180.4	200.3	11.1%	2.5%
ID (UG)	2.6	3.8	1.7	2.4			
PA (UG)	76.5	78.2	88.6	90.9	106.3	16.9%	39.0%
PA (GR)	116.3	87.3	84.0	87.0	94.0	8.0%	-19.1%
<i>BPA UG Total:</i>	<i>857.7</i>	<i>987.9</i>	<i>1,151.5</i>	<i>1,213.3</i>	<i>1,278.3</i>	<i>5.4%</i>	<i>49.0%</i>
<i>BPA GR Total:</i>	<i>197.5</i>	<i>170.5</i>	<i>158.5</i>	<i>164.8</i>	<i>164.3</i>	<i>-0.3%</i>	<i>-16.8%</i>
BPA Total:	1,055.2	1,158.4	1,310.0	1,378.0	1,442.6	4.7%	36.7%

Course FTE by Department and Academic Level College of Education

	FALL 2006	FALL 2007	FALL 2008	FALL 2009	FALL 2010	1-YEAR CHANGE	5-YEAR CHANGE
COURSE FTE							
Comm Disorder/Deaf	155.4	175.2	184.1	210.4	247.9	17.8%	59.5%
CDD (UG)	60.9	60.9	74.8	97.8	124.3	27.1%	104.0%
CDD (GR)	94.5	114.3	109.3	112.6	123.6	9.8%	30.8%
Counselor Edu	104.3	109.8	111.5	122.5	154.3	25.9%	48.0%
CED (GR)	104.3	109.8	111.5	122.5	154.3	25.9%	48.0%
Early Childhd/Family	199.3	200.1	208.9	193.6	216.1	11.6%	8.5%
EC (UG)	83.0	97.2	99.3	75.9	77.4	2.0%	-6.8%
EC (GR)	42.0	29.0	26.8	22.8	21.0	-8.0%	-50.0%
ID (UG)	74.3	73.9	82.9	94.9	117.8	24.1%	58.6%
Global Edu Innovation	173.6	179.0	180.4	155.8	154.7	-0.7%	-10.9%
CHIN (UG)	1.1	2.4	4.7	5.8	4.7	-19.4%	316.7%
FL (UG)	4.5	4.7	3.0	3.8	3.9	5.0%	-12.5%
FREN (UG)	5.6	6.9	6.8	5.4	9.0	65.5%	60.0%
GERM (UG)	3.0	3.0	3.8	1.1	3.0	166.7%	0.0%
HEBR (UG)		1.1					
ITAL (UG)	11.3	11.8	16.3	4.3	8.1	87.0%	-28.3%
PORT (UG)	5.3	8.4	11.1	6.6	8.1	22.9%	53.6%
SPAN (UG)	140.6	139.3	133.3	128.8	117.9	-8.4%	-16.1%
SPAN (GR)	2.3	1.3	1.5				
Mid Sec Ed	378.2	382.5	399.0	463.8	447.6	-3.5%	18.3%
EDUC (UG)	59.1	55.3	57.9	57.9	58.9	1.6%	-0.3%
EMSE (UG)	184.1	205.7	208.8	264.8	268.7	1.5%	45.9%
EMSE (GR)	135.0	121.5	132.3	141.0	120.0	-14.9%	-11.1%
Phys Ed/Rec/Health	594.6	632.1	672.9	767.3	891.2	16.1%	49.9%
GERO (UG)				0.2			
HED (UG)	152.8	174.0	198.6	232.3	288.6	24.2%	88.8%
HED (GR)	0.5			4.0	3.5	-12.5%	600.0%
ID (UG)	187.5	191.8	174.9	173.3	210.4	21.4%	12.2%
PED (UG)	191.8	204.5	233.4	286.9	309.2	7.8%	61.2%
PED (GR)	9.0	12.0	11.0	9.0	6.8	-25.0%	-25.0%
REC (UG)	52.9	49.8	55.0	61.6	72.8	18.2%	37.5%
Special Edu/Literacy	436.5	467.1	491.2	530.9	584.4	10.1%	33.9%
CS (UG)	96.2	118.7	116.6	110.1	101.1	-8.2%	5.1%
CS (GR)	57.0	45.8	39.3	36.5	23.0	-37.0%	-59.6%
EDUC (UG)	46.5	46.9	54.9	58.1	55.7	-4.2%	19.8%
ID (UG)	50.1	70.5	70.3	89.6	123.0	37.2%	145.7%
LM (UG)	3.6	2.6	0.2				
SPED (UG)	52.4	41.1	54.1	76.6	101.6	32.7%	93.8%
SPED (GR)	130.8	141.5	155.8	160.0	180.0	12.5%	37.7%
<i>EDU UG Total:</i>	<i>1,466.6</i>	<i>1,570.6</i>	<i>1,660.6</i>	<i>1,835.8</i>	<i>2,064.0</i>	<i>12.4%</i>	<i>40.7%</i>
<i>EDU GR Total:</i>	<i>575.3</i>	<i>575.0</i>	<i>587.3</i>	<i>608.5</i>	<i>632.1</i>	<i>3.9%</i>	<i>9.9%</i>
EDU Total:	2,041.8	2,145.6	2,247.9	2,444.3	2,696.1	10.3%	32.0%

Course FTE by Department and Academic Level

College of Humanities and Social Sciences

	FALL 2006	FALL 2007	FALL 2008	FALL 2009	FALL 2010	1-YEAR CHANGE	5-YEAR CHANGE
COURSE FTE							
Communication	398.7	398.8	425.7	458.3	542.4	18.4%	36.1%
COMM (UG)	291.9	286.6	314.9	330.5	398.9	20.7%	36.6%
COMM (GR)	14.8	17.8	15.0	9.5	19.0	100.0%	28.8%
FILM (UG)	15.9	24.9	31.1	41.9	52.9	26.3%	231.8%
ID (UG)	20.4	16.5	8.8	12.9	9.4	-27.5%	-54.1%
MED (UG)	55.6	53.0	55.8	63.5	62.3	-1.8%	12.0%
Economics	154.9	184.6	199.9	225.7	216.6	-4.0%	39.9%
ECO (UG)	154.9	180.4	199.9	221.4	210.4	-5.0%	35.8%
ECO (GR)		4.3		4.3	6.3	47.1%	
English	838.4	878.6	964.6	1,069.7	1,148.7	7.4%	37.0%
ENG (UG)	783.4	823.7	883.3	983.8	1,045.5	6.3%	33.5%
ENG (GR)	17.5	9.7	14.4	13.7	20.5	50.0%	17.1%
ESL (UG)	36.8	36.0	57.6	64.1	62.8	-2.0%	70.9%
ID (UG)	0.8	9.3	9.4	8.1	19.9	146.5%	2550.0%
Gen Studies	202.8	210.6	202.4	206.8	238.9	15.5%	17.8%
GE (UG)	202.8	210.6	202.4	206.8	238.9	15.5%	17.8%
History	392.1	412.6	442.1	512.6	567.6	10.7%	44.8%
HIST (UG)	392.1	411.6	442.1	512.6	567.6	10.7%	44.8%
HIST (GR)		1.0					
Philosophy/Religion	164.6	130.9	143.4	154.7	171.6	10.9%	4.2%
PHIL (UG)	144.0	107.8	120.9	134.8	145.5	7.9%	1.0%
REL (UG)	20.6	23.1	22.5	19.9	26.1	31.1%	26.4%
Political Science	151.2	159.5	172.7	157.1	170.5	8.6%	12.8%
PS (UG)	140.4	145.5	163.7	152.1	162.0	6.5%	15.4%
PS (GR)	10.8	14.0	9.0	5.0	8.5	70.0%	-20.9%
Psychology	718.3	730.0	748.3	859.5	877.0	2.0%	22.1%
ID (GR)	3.3	3.0	5.0	5.8	5.5	-4.3%	69.2%
PSRT (UG)	9.2	6.2	10.1	12.0	16.9	40.6%	83.7%
PSRT (GR)				0.5	0.3	-50.0%	
PSY (UG)	614.6	637.1	658.4	770.1	777.8	1.0%	26.5%
PSY (GR)	91.3	83.8	74.8	71.2	76.7	7.7%	-16.0%
Social Work	57.2	73.9	88.6	79.1	42.9	-45.7%	-24.9%
SW (UG)	57.2	73.9	88.6	79.1	42.9	-45.7%	-24.9%
Sociology/Anthropology	354.9	377.3	385.4	432.4	455.5	5.3%	28.3%
ANTH (UG)	42.0	40.7	38.3	36.9	33.8	-8.6%	-19.6%
SOC (UG)	312.9	336.6	337.9	381.2	405.8	6.4%	29.7%
SOC (GR)			9.3	14.3	16.0	12.3%	
<i>HSS UG Total:</i>	<i>3,295.6</i>	<i>3,423.3</i>	<i>3,645.5</i>	<i>4,031.7</i>	<i>4,279.1</i>	<i>6.1%</i>	<i>29.8%</i>
<i>HSS GR Total:</i>	<i>137.5</i>	<i>133.4</i>	<i>127.4</i>	<i>124.1</i>	<i>152.7</i>	<i>23.0%</i>	<i>11.0%</i>
HSS Total:	3,433.1	3,556.7	3,772.9	4,155.7	4,431.7	6.6%	29.1%

Course FTE by Department and Academic Level College of Natural, Applied, and Health Sciences

	FALL 2006	FALL 2007	FALL 2008	FALL 2009	FALL 2010	1-YEAR CHANGE	5-YEAR CHANGE
COURSE FTE							
Biological Sciences	320.6	341.1	359.7	415.6	438.1	5.4%	36.6%
BIO (UG)	317.8	337.4	353.1	410.0	433.4	5.7%	36.4%
ID (UG)	2.8	3.8	6.6	5.6	4.7	-16.7%	66.7%
Chemistry/Physics	156.3	160.4	184.7	192.2	222.5	15.8%	42.3%
CHEM (UG)	119.4	124.1	140.7	146.3	161.6	10.4%	35.3%
CHEM (GR)	0.5		0.8		0.3		-33.3%
PHYS (UG)	36.4	36.3	43.3	45.9	60.6	32.0%	66.2%
Computer Science	231.6	233.9	244.3	273.3	298.4	9.2%	28.9%
CPS (UG)	174.8	170.8	174.4	203.1	227.4	12.0%	30.1%
CPS (GR)	2.8	1.8	1.0	2.5	2.8	10.0%	0.0%
ID (UG)	22.3	36.6	45.2	41.8	39.0	-6.7%	74.8%
TECH (UG)	31.7	24.9	23.6	25.8	29.3	13.3%	-7.7%
Env & Life Sci				1.5	3.4	125.0%	
SUST (UG)				1.5	3.4	125.0%	
Geology/Meteorology	166.0	165.3	173.3	192.5	206.8	7.4%	24.5%
ASTR (UG)	24.5	23.5	25.5	28.0	34.8	24.1%	41.8%
ES (UG)	32.6	37.2	38.3	52.9	52.8	-0.4%	62.0%
GEOG (UG)	34.5	34.7	37.1	34.3	33.2	-3.3%	-3.8%
GEOL (UG)	33.8	32.3	34.3	35.3	33.8	-4.3%	0.0%
METR (UG)	35.4	30.9	32.6	31.3	42.3	35.4%	19.4%
OCEN (UG)	5.3	6.8	5.5	10.8	10.0	-7.0%	90.5%
Mathematics	636.9	664.3	694.9	652.3	753.4	15.5%	18.3%
MATH (UG)	623.9	652.8	683.4	635.8	736.2	15.8%	18.0%
MATH (GR)	13.0	11.5	11.5	16.5	17.3	4.5%	32.7%
Nursing	107.7	103.0	127.0	129.4	148.3	14.6%	37.7%
NURS (UG)	71.8	70.4	84.4	85.1	107.3	26.1%	49.4%
NURS (GR)	35.9	32.7	42.7	44.2	41.0	-7.3%	14.2%
<i>NAHS UG Total:</i>	<i>1,601.8</i>	<i>1,639.9</i>	<i>1,727.9</i>	<i>1,793.4</i>	<i>2,009.5</i>	<i>12.0%</i>	<i>25.5%</i>
<i>NAHS GR Total:</i>	<i>52.2</i>	<i>45.9</i>	<i>55.9</i>	<i>63.3</i>	<i>61.3</i>	<i>-3.0%</i>	<i>17.6%</i>
NAHS Total:	1,653.9	1,685.9	1,783.9	1,856.7	2,070.8	11.5%	25.2%

Course FTE by Department and Academic Level

School of Visual and Performing Arts

	FALL 2006	FALL 2007	FALL 2008	FALL 2009	FALL 2010	1-YEAR CHANGE	5-YEAR CHANGE
COURSE FTE							
Design	201.1	189.1	199.5	198.9	216.4	8.8%	7.6%
DSN (UG)	23.1	25.9	28.7	30.9	41.8	35.2%	81.3%
GCOM (UG)	33.9	30.8	34.9	27.4	23.6	-13.7%	-30.4%
GCOM (GR)	17.5	13.3	9.0	9.5	7.0	-26.3%	-60.0%
ID (UG)	11.1	11.6	12.9	11.4	19.5	70.5%	76.3%
IND (UG)	9.9	8.8	14.1	19.1	19.9	3.9%	100.0%
INTD (UG)	48.8	45.0	50.8	35.4	40.5	14.3%	-16.9%
VC (UG)	56.8	53.8	49.1	65.1	64.1	-1.4%	12.9%
Fine Arts	376.6	375.2	383.4	377.7	377.0	-0.2%	0.1%
AH (UG)	117.2	129.8	125.8	108.8	110.1	1.2%	-6.1%
AH (GR)				0.8			
FA (UG)	234.1	218.5	234.3	247.3	249.1	0.8%	6.4%
FA (GR)	25.3	26.9	23.3	21.0	17.8	-15.1%	-29.6%
Music	160.2	156.5	163.1	160.3	161.8	0.9%	1.0%
ID (GR)		1.3					
MUS (UG)	160.2	155.3	163.1	160.3	161.8	0.9%	1.0%
Theatre	67.2	72.2	66.4	80.3	84.4	5.1%	25.6%
ID (UG)	0.4	0.2	0.5	0.8	0.8	0.0%	85.7%
THE (UG)	66.8	72.0	65.9	79.5	83.6	5.2%	25.2%
VPA Other	5.8	3.5	4.5	3.0	1.0	-66.7%	-82.6%
MALS (GR)	5.8	3.5	4.5	3.0	1.0	-66.7%	-82.6%
<i>VPA UG Total:</i>	<i>762.3</i>	<i>751.6</i>	<i>780.1</i>	<i>786.0</i>	<i>814.8</i>	<i>3.7%</i>	<i>6.9%</i>
<i>VPA GR Total:</i>	<i>48.6</i>	<i>44.9</i>	<i>36.8</i>	<i>34.2</i>	<i>25.8</i>	<i>-24.6%</i>	<i>-46.8%</i>
VPA Total:	810.9	796.5	817.0	820.2	840.6	2.5%	3.7%

Course FTE by Department and Academic Level Nathan Weiss Graduate College

	FALL 2006	FALL 2007	FALL 2008	FALL 2009	FALL 2010	1-YEAR CHANGE	5-YEAR CHANGE
COURSE FTE							
Doctoral Stu Psyc				11.7	16.8	44.3%	
PSYD (GR)				11.7	16.8	44.3%	
Edu Leadership	170.5	169.3	173.5	155.3	152.5	-1.8%	-10.6%
EDD (GR)			9.5	16.5	24.8	50.0%	
EL (GR)	170.5	169.3	164.0	138.8	127.8	-7.9%	-25.1%
Grad Mgmt Studies	35.0	39.0	50.3	47.0	47.3	0.5%	35.0%
GMBA (GR)	18.0	27.0	42.0	45.3	47.3	4.4%	162.5%
MIS (GR)	17.0	12.0	8.3	1.8			
NWGC Other	6.3	17.9	21.1	23.6	25.5	8.2%	308.0%
ID (UG)		9.2	11.6	14.8	18.8	26.6%	
MAHG (GR)	6.3	8.8	9.5	8.8	6.8	-22.9%	8.0%
Occupational Therapy - GR	66.2	68.5	75.4	79.8	76.9	-3.7%	16.1%
OT (UG)	1.4	1.1	6.2	10.6	3.7	-65.1%	156.5%
OT (GR)	64.8	67.3	69.3	69.3	73.2	5.7%	13.0%
Social Work - Graduate	109.0	103.3	97.9	130.8	134.6	2.9%	23.5%
SW (GR)	109.0	103.3	97.9	130.8	134.6	2.9%	23.5%
<i>NWGC UG Total:</i>	<i>1.4</i>	<i>10.3</i>	<i>17.8</i>	<i>25.4</i>	<i>22.4</i>	<i>-11.6%</i>	<i>1460.9%</i>
<i>NWGC GR Total:</i>	<i>385.5</i>	<i>387.6</i>	<i>400.4</i>	<i>422.7</i>	<i>431.1</i>	<i>2.0%</i>	<i>11.8%</i>
NWGC Total:	386.9	397.9	418.2	448.0	453.5	1.2%	17.2%

Course FTE by Department and Academic Level Other Academic Unit

	FALL 2006	FALL 2007	FALL 2008	FALL 2009	FALL 2010	1-YEAR CHANGE	5-YEAR CHANGE
COURSE FTE							
Sci & Tech Edu	59.5	63.3	64.6	72.0	79.3	10.2%	33.4%
BIO (GR)	13.4	12.8	7.7	7.0	10.9	56.0%	-18.6%
ID (UG)	30.8	31.8		0.3			
ID (GR)	11.0	12.0	9.5	19.8	21.5	8.9%	95.5%
STE (GR)	4.3		3.3	3.5			
STME (UG)			28.0	26.6	28.8	8.2%	
STME (GR)		6.8	16.2	14.8	18.2	22.5%	
<i>OtherAcad UG Total:</i>	<i>30.8</i>	<i>31.8</i>	<i>28.0</i>	<i>26.9</i>	<i>28.8</i>	<i>7.0%</i>	<i>-6.7%</i>
<i>OtherAcad GR Total:</i>	<i>28.7</i>	<i>31.5</i>	<i>36.6</i>	<i>45.1</i>	<i>50.6</i>	<i>12.2%</i>	<i>76.5%</i>
Other Acad Unit Total:	59.5	63.3	64.6	72.0	79.3	10.2%	33.4%



Kean University - Degree Conferred



Degrees Conferred

Page 26	At-a-Glance
Page 28	Degrees Conferred by Department and Program College of Business and Public Administration
Page 29	Degrees Conferred by Department and Program College of Education
Page 30	Degrees Conferred by Department and Program College of Humanities and Social Sciences
Page 31	Degrees Conferred by Department and Program College of Natural, Applied, and Health Sciences
Page 32	Degrees Conferred by Department and Program School of Visual and Performing Arts
Page 33	Degrees Conferred by Department and Program Nathan Weiss Graduate College
Page 34	Degrees Conferred by Department and Program Other Academic Unit

Degrees Conferred, Fiscal Year 2009 - 2010

	TOTAL		BACHELOR'S		MASTER'S	
	No.	%	No.	%	No.	%
DEGREE LEVEL						
Bachelor's	2,374	76.9%	2,374	100.0%		
Master's	713	23.1%			713	100.0%
GENDER						
Male	984	31.9%	821	34.6%	163	22.9%
Female	2,103	68.1%	1,553	65.4%	550	77.1%
RACE / ETHNICITY						
Black	504	16.3%	383	16.1%	121	17.0%
Hispanic	498	16.1%	420	17.7%	78	10.9%
Asian	237	7.7%	186	7.8%	51	7.2%
White	1,664	53.9%	1,238	52.1%	426	59.7%
MultiRace	14	0.5%	10	0.4%	4	0.6%
Not Reported	170	5.5%	137	5.8%	33	4.6%
COLLEGE						
BPA	789	25.6%	701	29.5%	88	12.3%
EDU	793	25.7%	528	22.2%	265	37.2%
HSS	765	24.8%	706	29.7%	59	8.3%
NAHS	329	10.7%	280	11.8%	49	6.9%
NWGC	204	6.6%	0	0.0%	204	28.6%
VPA	164	5.3%	133	5.6%	31	4.3%
Other Academic unit	43	1.4%	26	1.1%	17	2.4%

* Fiscal Year includes degrees conferred between July 1 and June 30.

Top 10 Bachelor's Degrees Conferred

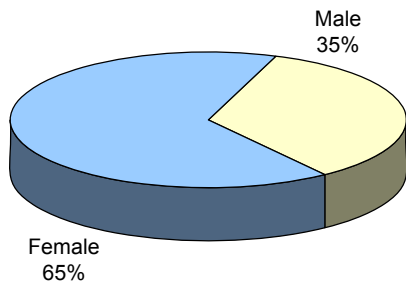
Management Science	250
Psychology	229
Accounting	145
Elementary, Middle and Secondary Education	140
Criminal Justice	127
Biology	95
English	89
Physical Education	89
History	84
Marketing	83

Top 10 Master's Degrees Conferred

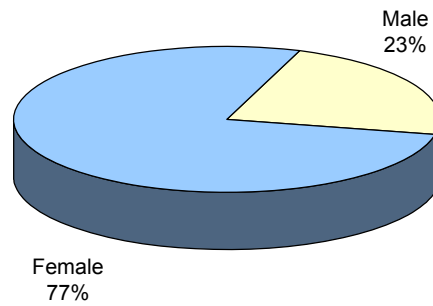
Educational Administration	84
Special Education	60
Social Work	53
Instruction & Curriculum - MSE	51
Counselor Education	46
Accounting	45
Public Administration	43
Nursing	42
Speech Language Pathology	40
Global MBA	31

Additional information is available online at <http://ir.kean.edu>.

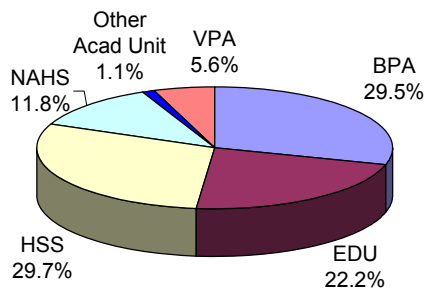
**BACHELOR'S DEGREES
By Gender**



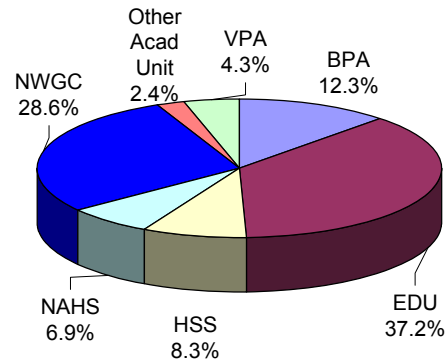
**MASTER'S DEGREES
By Gender**



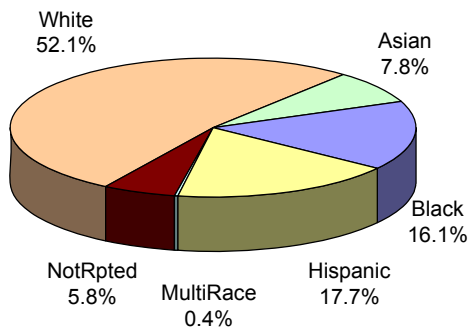
**BACHELOR'S DEGREES
By College**



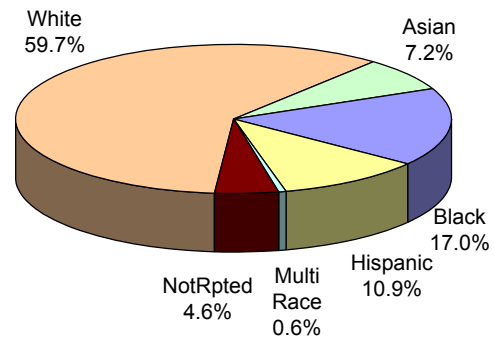
**MASTER'S DEGREES
By College**



**BACHELOR'S DEGREES
By Race/Ethnicity**



**MASTER'S DEGREES
By Race/Ethnicity**



Degrees Conferred by Department and Program College of Business and Public Administration

	FISCAL Yr 2005-06	FISCAL Yr 2006-07	FISCAL Yr 2007-08	FISCAL Yr 2008-09	FISCAL Yr 2009-10	1-YEAR CHANGE	5-YEAR CHANGE
DEGREES CONFERRED							
Accounting							
Accounting (UG)	114	103	92	129	145	12.4%	27.2%
Accounting (GR)	50	48	40	32	45	40.6%	-10.0%
Accounting Total:	164	151	132	161	190	18.0%	15.9%
Criminal Justice							
Criminal Justice (UG)	81	75	81	133	127	-4.5%	56.8%
Criminal Justice Total:	81	75	81	133	127	-4.5%	56.8%
Finance							
Finance (UG)	64	42	48	53	60	13.2%	-6.3%
Finance Total:	64	42	48	53	60	13.2%	-6.3%
Management							
Management Sci. (UG)	210	187	194	200	250	25.0%	19.0%
Management Total:	210	187	194	200	250	25.0%	19.0%
Marketing							
Marketing (UG)	56	73	70	84	83	-1.2%	48.2%
Marketing Total:	56	73	70	84	83	-1.2%	48.2%
Public Adm							
Public Admin. (UG)	28	39	21	30	36	20.0%	28.6%
Public Admin. (GR)	59	53	46	53	43	-18.9%	-27.1%
Public Adm Total:	87	92	67	83	79	-4.8%	-9.2%
<i>BPA UG Total:</i>	<i>553</i>	<i>519</i>	<i>506</i>	<i>629</i>	<i>701</i>	<i>11.4%</i>	<i>26.8%</i>
<i>BPA GR Total:</i>	<i>109</i>	<i>101</i>	<i>86</i>	<i>85</i>	<i>88</i>	<i>3.5%</i>	<i>-19.3%</i>
BPA Total:	662	620	592	714	789	10.5%	19.2%

Degrees Conferred by Department and Program College of Education

Degrees Conferred

	FISCAL Yr 2005-06	FISCAL Yr 2006-07	FISCAL Yr 2007-08	FISCAL Yr 2008-09	FISCAL Yr 2009-10	1-YEAR CHANGE	5-YEAR CHANGE
DEGREES CONFERRED							
Comm Disorder/Deaf							
Speech Lang. Pathology (GR)	30	37	29	42	40	-4.8%	33.3%
Speech, Lang Hear. Sci. (UG)	26	34	37	33	51	54.5%	96.2%
Comm Disorder/Deaf Total:	56	71	66	75	91	21.3%	62.5%
Counselor Edu							
Counselor Edu (GR)	44	41	46	56	46	-17.9%	4.5%
Counselor Edu Total:	44	41	46	56	46	-17.9%	4.5%
Early Childhd/Family							
Early Childhood Edu. (UG)	99	99	101	107	74	-30.8%	-25.3%
Early Childhood Edu. (GR)	27	19	19	25	15	-40.0%	-44.4%
Early Childhd/Family Total:	126	118	120	132	89	-32.6%	-29.4%
Elem Ed/Bil Ed							
Elementary Edu (UG)	0	0	23	16	38	137.5%	
Instruction & Curriculum (GR)	15	11	17	20	21	5.0%	40.0%
Elem Ed/Bil Ed Total:	15	11	40	36	59	63.9%	293.3%
Global Edu Innovation							
Spanish (UG)	50	41	70	52	41	-21.2%	-18.0%
Global Edu Innovation Total:	50	41	70	52	41	-21.2%	-18.0%
Mid Sec Ed							
Elem/Mid/Sec Edu (UG)	109	139	83	90	140	55.6%	28.4%
Instruction & Curriculum - MSE (GR)	58	50	53	38	51	34.2%	-12.1%
Mid Sec Ed Total:	167	189	136	128	191	49.2%	14.4%
Phys Ed/Rec/Health							
Athletic Training (UG)	0	3	5	7	6	-14.3%	
Exercise Science (GR)	6	2	3	1	6	500.0%	0.0%
Physical Edu (UG)	60	57	60	73	89	21.9%	48.3%
Recreation Admin. (UG)	14	23	18	27	23	-14.8%	64.3%
Phys Ed/Rec/Health Total:	80	85	86	108	124	14.8%	55.0%
Special Edu/Literacy							
Edu/Media/Spec. (GR)	13	12	15	8	9	12.5%	-30.8%
Educator of Indivs with Disabilities (UG)	57	54	37	50	66	32.0%	15.8%
Reading Spec. (GR)	21	24	27	28	17	-39.3%	-19.0%
Special Edu (GR)	50	61	48	50	60	20.0%	20.0%
Special Edu/Literacy Total:	141	151	127	136	152	11.8%	7.8%
EDU UG Total:	415	450	434	455	528	16.0%	27.2%
EDU GR Total:	264	257	257	268	265	-1.1%	0.4%
EDU Total:	679	707	691	723	793	9.7%	16.8%

Degrees Conferred by Department and Program

College of Humanities and Social Sciences

	FISCAL Yr 2005-06	FISCAL Yr 2006-07	FISCAL Yr 2007-08	FISCAL Yr 2008-09	FISCAL Yr 2009-10	1-YEAR CHANGE	5-YEAR CHANGE
DEGREES CONFERRED							
Communication							
Communication (UG)	44	42	46	50	51	2.0%	15.9%
Communication - Broadcast (UG)	38	25	2	1	0		
Communication Studies (GR)	1	9	5	9	8	-11.1%	700.0%
Media Film (UG)	1	8	33	20	41	105.0%	4000.0%
Communication Total:	84	84	86	80	100	25.0%	19.0%
Economics							
Economics (UG)	16	21	13	21	30	42.9%	87.5%
Economics Total:	16	21	13	21	30	42.9%	87.5%
English							
English (UG)	63	56	74	86	89	3.5%	41.3%
English Total:	63	56	74	86	89	3.5%	41.3%
History							
History (UG)	57	83	89	79	84	6.3%	47.4%
History Total:	57	83	89	79	84	6.3%	47.4%
Philosophy/Religion							
Philosophy and Religion (UG)	2	4	1	0	0		
Philosophy/Religion Total:	2	4	1	0	0		
Political Science							
Political Science (UG)	34	31	26	30	34	13.3%	0.0%
Political Science (GR)	3	3	7	8	4	-50.0%	33.3%
Political Science Total:	37	34	33	38	38	0.0%	2.7%
Psychology							
Behavioral Sci (GR)	25	15	24	16	9	-43.8%	-64.0%
Edu Psych (GR)	22	5	14	11	10	-9.1%	-54.5%
Marri & Fam Therapy (GR)	4	4	8	9	4	-55.6%	0.0%
Psych Rehab (UG)	11	10	7	8	13	62.5%	18.2%
Psychology (UG)	178	200	205	206	229	11.2%	28.7%
Psychology (GR)	0	0	0	0	14		
School Psychology (GR)	7	12	9	10	10	0.0%	42.9%
Psychology Total:	247	246	267	260	289	11.2%	17.0%
Social Work							
Social Work (UG)	30	39	31	51	55	7.8%	83.3%
Social Work Total:	30	39	31	51	55	7.8%	83.3%
Sociology/Anthropology							
Sociology (UG)	56	45	44	65	80	23.1%	42.9%
Sociology/Anthropology Total:	56	45	44	65	80	23.1%	42.9%
<i>HSS UG Total:</i>	<i>530</i>	<i>564</i>	<i>571</i>	<i>617</i>	<i>706</i>	<i>14.4%</i>	<i>33.2%</i>
<i>HSS GR Total:</i>	<i>62</i>	<i>48</i>	<i>67</i>	<i>63</i>	<i>59</i>	<i>-6.3%</i>	<i>-4.8%</i>
HSS Total:	592	612	638	680	765	12.5%	29.2%

Degrees Conferred by Department and Program College of Natural, Applied, and Health Sciences

Degrees Conferred

	FISCAL YR 2005-06	FISCAL YR 2006-07	FISCAL YR 2007-08	FISCAL YR 2008-09	FISCAL YR 2009-10	1-YEAR CHANGE	5-YEAR CHANGE
DEGREES CONFERRED							
Biological Sciences							
Biology (UG)	67	69	71	74	95	28.4%	41.8%
Medical Tech. (UG)	3	6	4	2	10	400.0%	233.3%
Biological Sciences Total:	70	75	75	76	105	38.2%	50.0%
Chemistry/Physics							
Chemistry (UG)	14	12	10	14	15	7.1%	7.1%
Chemistry/Physics Total:	14	12	10	14	15	7.1%	7.1%
Computer Science							
Comp.Integrated Design & Mfg. Tech. (UG)	4	3	1	2	3	50.0%	-25.0%
Computer Science (UG)	41	29	22	18	16	-11.1%	-61.0%
Electronics Tech. (UG)	3	7	4	1	0		
Tech.Edu. (UG)	0	1	0	0	0		
Telecomm.Info.Tech. (UG)	6	12	5	5	3	-40.0%	-50.0%
Computer Science Total:	54	52	32	26	22	-15.4%	-59.3%
Geology/Meteorology							
Earth Science (UG)	10	18	16	9	13	44.4%	30.0%
Geology/Meteorology Total:	10	18	16	9	13	44.4%	30.0%
Health Info Mgmt							
HIM (UG)	17	15	22	8	10	25.0%	-41.2%
Health Info Mgmt Total:	17	15	22	8	10	25.0%	-41.2%
Mathematics							
Comp/Stat/Math. (GR)	2	6	2	1	2	100.0%	0.0%
Math. Edu. (GR)	6	3	5	2	5	150.0%	-16.7%
Math. Science (UG)	29	33	26	42	43	2.4%	48.3%
Mathematics Total:	37	42	33	45	50	11.1%	35.1%
Nursing							
M.S.N./M.P.A. in Nursing (GR)	5	5	10	3	0		
Nursing (UG)	35	33	59	69	72	4.3%	105.7%
Nursing (GR)	26	13	27	26	42	61.5%	61.5%
Nursing Total:	66	51	96	98	114	16.3%	72.7%
<i>NAHS UG Total:</i>	<i>235</i>	<i>239</i>	<i>240</i>	<i>244</i>	<i>280</i>	<i>14.8%</i>	<i>19.1%</i>
<i>NAHS GR Total:</i>	<i>39</i>	<i>27</i>	<i>44</i>	<i>32</i>	<i>49</i>	<i>53.1%</i>	<i>25.6%</i>
NAHS Total:	274	266	284	276	329	19.2%	20.1%

Degrees Conferred by Department and Program School of Visual and Performing Arts

	FISCAL Yr 2005-06	FISCAL Yr 2006-07	FISCAL Yr 2007-08	FISCAL Yr 2008-09	FISCAL Yr 2009-10	1-YEAR CHANGE	5-YEAR CHANGE
DEGREES CONFERRED							
Design							
Graphic Comm (UG)	15	14	20	11	10	-9.1%	-33.3%
Graphic Comm (GR)	6	11	18	10	11	10.0%	83.3%
Industrial Design (UG)	5	9	5	3	3	0.0%	-40.0%
Interior Design (UG)	33	37	24	25	25	0.0%	-24.2%
Visual Comm (UG)	26	28	38	25	27	8.0%	3.8%
Design Total:	85	99	105	74	76	2.7%	-10.6%
Fine Arts							
Art History (UG)	7	6	4	3	7	133.3%	0.0%
Fine Arts (UG)	20	29	25	22	22	0.0%	10.0%
Fine Arts Edu (GR)	15	19	22	19	14	-26.3%	-6.7%
Studio Art (UG)	5	6	11	9	8	-11.1%	60.0%
Fine Arts Total:	47	60	62	53	51	-3.8%	8.5%
Music							
Music (UG)	6	4	5	6	11	83.3%	83.3%
Music Edu. (UG)	0	3	2	2	2	0.0%	
Music Total:	6	7	7	8	13	62.5%	116.7%
Theatre							
Speech & Theatre (UG)	0	0	2	0	0		
Theatre (UG)	10	4	7	9	11	22.2%	10.0%
Theatre Design & Tech. (UG)	0	0	2	1	2	100.0%	
Theatre Performance (UG)	0	0	2	4	5	25.0%	
Theatre Total:	10	4	13	14	18	28.6%	80.0%
VPA Other							
Liberal Studies (GR)	8	5	6	6	6	0.0%	-25.0%
VPA Other Total:	8	5	6	6	6	0.0%	-25.0%
<i>VPA UG Total:</i>	<i>127</i>	<i>140</i>	<i>147</i>	<i>120</i>	<i>133</i>	<i>10.8%</i>	<i>4.7%</i>
<i>VPA GR Total:</i>	<i>29</i>	<i>35</i>	<i>46</i>	<i>35</i>	<i>31</i>	<i>-11.4%</i>	<i>6.9%</i>
VPA Total:	156	175	193	155	164	5.8%	5.1%

Degrees Conferred by Department and Program Nathan Weiss Graduate College

Degrees Conferred

	FISCAL Yr 2005-06	FISCAL Yr 2006-07	FISCAL Yr 2007-08	FISCAL Yr 2008-09	FISCAL Yr 2009-10	1-YEAR CHANGE	5-YEAR CHANGE
DEGREES CONFERRED							
Edu Leadership							
Edu Admin. (GR)	85	96	91	89	84	-5.6%	-1.2%
Edu Leadership Total:	85	96	91	89	84	-5.6%	-1.2%
Grad Mgmt Studies							
MBA in Global Management (GR)	0	3	17	52	31	-40.4%	
MIS (GR)	21	10	16	2	4	100.0%	-81.0%
Grad Mgmt Studies Total:	21	13	33	54	35	-35.2%	66.7%
NWGC Other							
Holocaust & Genocide (GR)	0	0	1	3	3	0.0%	
NWGC Other Total:	0	0	1	3	3	0.0%	
Occupational Therapy - GR							
Occupational Therapy (GR)	10	12	18	29	29	0.0%	190.0%
Occupational Therapy - GR Total:	10	12	18	29	29	0.0%	190.0%
Social Work - Graduate							
Social Work (GR)	54	46	41	42	53	26.2%	-1.9%
Social Work - Graduate Total:	54	46	41	42	53	26.2%	-1.9%
<i>NWGC GR Total:</i>	<i>170</i>	<i>167</i>	<i>184</i>	<i>217</i>	<i>204</i>	<i>-6.0%</i>	<i>20.0%</i>
NWGC Total:	170	167	184	217	204	-6.0%	20.0%

Degrees Conferred by Department and Program Other Academic Unit

	FISCAL Yr 2005-06	FISCAL Yr 2006-07	FISCAL Yr 2007-08	FISCAL Yr 2008-09	FISCAL Yr 2009-10	1-YEAR CHANGE	5-YEAR CHANGE
DEGREES CONFERRED							
Sci & Tech Edu							
Biotechnology (GR)	8	8	4	8	14	75.0%	75.0%
Science & Tech. (UG)	0	0	10	17	26	52.9%	
Science & Tech. (GR)	0	0	0	4	3	-25.0%	
Sci & Tech Edu Total:	8	8	14	29	43	48.3%	437.5%
<i>OtherAcad UG Total:</i>	<i>0</i>	<i>0</i>	<i>10</i>	<i>17</i>	<i>26</i>	<i>52.9%</i>	
<i>OtherAcad GR Total:</i>	<i>8</i>	<i>8</i>	<i>4</i>	<i>12</i>	<i>17</i>	<i>41.7%</i>	<i>112.5%</i>
Other Acad Unit Total:	8	8	14	29	43	48.3%	437.5%



Kean University - Employees



Employees

Page 36

At-a-Glance

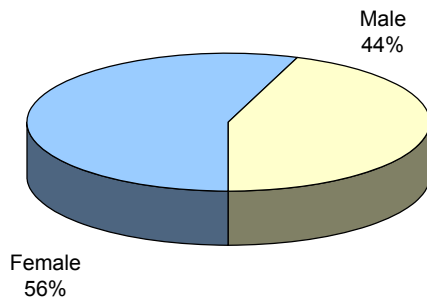
Fall 2010 Employee Demographics

	TOTAL		FACULTY		STAFF	
	TOTAL	%	#	%	#	%
TOTAL FULL-TIME	1,095	100.0%	343	100.0%	752	100.0%
GENDER						
Male	487	44.5%	179	52.2%	308	41.0%
Female	608	55.5%	164	47.8%	444	59.0%
RACE / ETHNICITY						
Black	224	20.5%	33	9.6%	191	25.4%
Hispanic	195	17.8%	25	7.3%	170	22.6%
Asian	83	7.6%	39	11.4%	44	5.9%
White	585	53.4%	245	71.4%	340	45.2%
Multi-race	5	0.5%			5	0.7%
Not Reported	3	0.3%	1	0.3%	2	0.3%
EMPLOYEE GROUP						
Faculty	343	31.3%	343	100.0%		
Administrative & Managerial	150	13.7%			150	19.9%
Professional	198	18.1%			198	26.3%
Clerk & Secretarial	139	12.7%			139	18.5%
Technical & Paraprofessional	82	7.5%			82	10.9%
Service Maintenance	138	12.6%			138	18.4%
Skilled Crafts	45	4.1%			45	6.0%
AGE						
< 30	79	7.2%	2	0.6%	77	10.2%
30 - 39	181	16.5%	32	9.3%	149	19.8%
40 - 49	255	23.3%	69	20.1%	186	24.7%
50 - 59	292	26.7%	90	26.2%	202	26.9%
60 - 69	237	21.6%	119	34.7%	118	15.7%
70 +	51	4.7%	31	9.0%	20	2.7%
Average Age	50	-	56	-	47	-
PART TIME EMPLOYEES	48	-	24	-	24	-
ADJUNCT FACULTY	1,000	-	1,000	-		

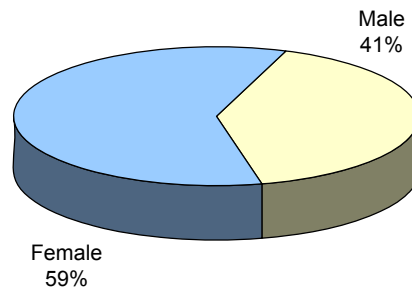
* Numbers represent full-time faculty and staff only, unless otherwise noted.

Additional information is available online at <http://ir.kean.edu>.

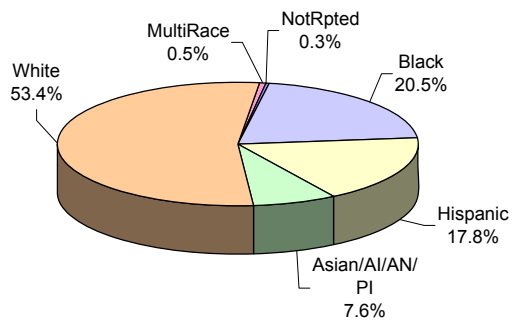
**FULL-TIME EMPLOYEES
By Gender**



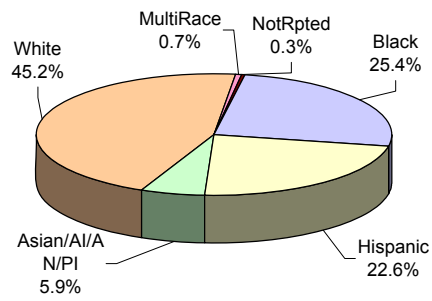
**FULL-TIME STAFF
By Gender**



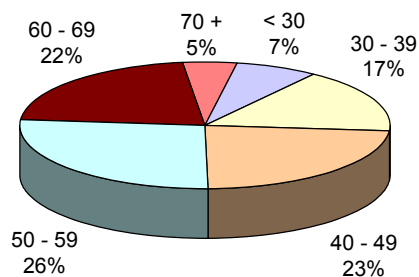
**FULL-TIME EMPLOYEES
By Race/Ethnicity**



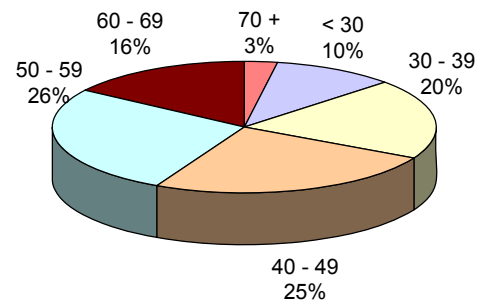
**FULL-TIME STAFF
By Race/Ethnicity**



**FULL-TIME EMPLOYEES
By Age Group**



**FULL-TIME STAFF
By Age Group**



The charts for full-time faculty are located in the “Faculty” section.



Kean University – Faculty

Faculty

Page 40	At-a-Glance
Page 42	Faculty Trends
Page 44	Full-Time Faculty by Department College of Business and Public Administration College of Education
Page 45	Full-Time Faculty by Department College of Humanities and Social Sciences College of Natural, Applied, and Health Sciences
Page 46	Full-Time Faculty by Department School of Visual and Performing Arts Nathan Weiss Graduate College Ohter Academic Unit
Page 47	Distribution of Full-Time Faculty by Age



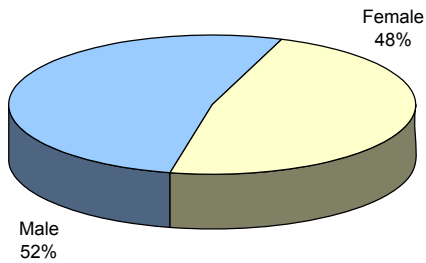
Fall 2010 Faculty Demographics

	UNIVERSITY		COLLEGES						
	TOTAL	%	BPA	EDU	HSS	NAHS	NWGC	VPA	OTHER ACAD
TOTAL FULL-TIME	343	100.0%	40	68	101	68	20	38	8
GENDER									
Male	179	52.2%	29	22	55	43	6	20	4
Female	164	47.8%	11	46	46	25	14	18	4
RACE / ETHNICITY									
Black	33	9.6%	6	6	12	4	3	2	0
Hispanic	25	7.3%	4	8	8	3	0	2	0
Asian	39	11.4%	5	3	9	16	2	1	3
White	245	71.4%	25	51	71	45	15	33	5
Not Reported	1	0.3%	0	0	1	0	0	0	0
TENURE STATUS									
Tenured	267	77.8%	30	54	82	54	10	34	3
Tenure Track	64	18.7%	8	12	16	12	8	3	5
Not on Tenure Track	12	3.5%	2	2	3	2	2	1	0
RANK									
Professor	123	35.9%	12	23	41	29	3	15	0
Associate Professor	87	25.4%	13	18	21	15	7	11	2
Assistant Professor	127	37.0%	13	25	37	24	10	12	6
Instructor	6	1.7%	2	2	2	0	0	0	0
EDUCATION									
Highest Degree									
Doctorate	290	84.5%	31	62	96	58	18	17	8
Master's	52	15.2%	8	6	5	10	2	21	0
Terminal Degree in Field	311	90.7%	34	63	100	58	18	30	8
AGE									
Average Age	56	-	55	59	56	54	53	53	39
Faculty >= 60	150	43.7%	16	41	47	26	8	12	0
PART-TIME FACULTY	24	-	0	23	1	0	0	0	0
ADJUNCT FACULTY	1000	-							

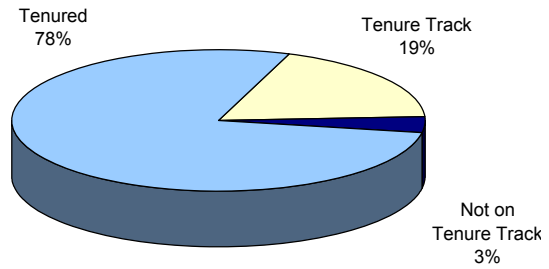
* Numbers represent full-time faculty only, unless otherwise noted.

Additional information is available online at <http://ir.kean.edu>.

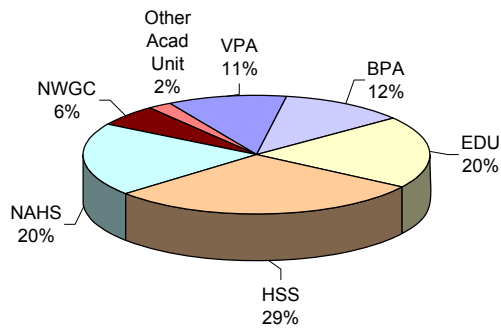
**FULL-TIME FACULTY
By Gender**



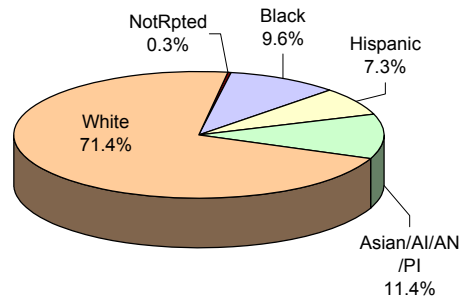
**FULL-TIME FACULTY
By Tenure Status**



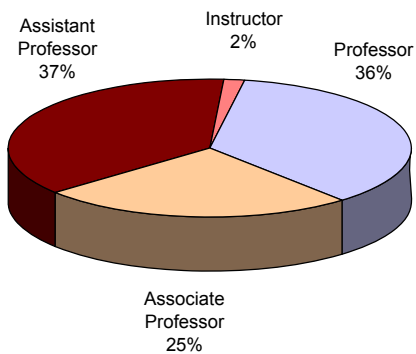
**FULL-TIME FACULTY
By College**



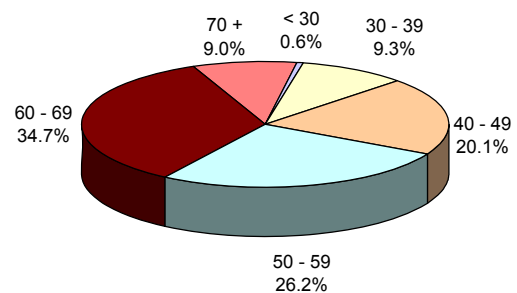
**FULL-TIME FACULTY
By Race/Ethnicity**



**FULL-TIME FACULTY
By Rank**



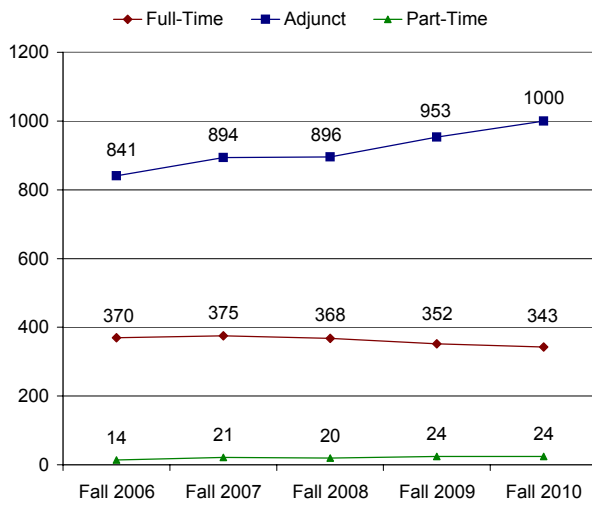
**FULL-TIME FACULTY
By Age Group**



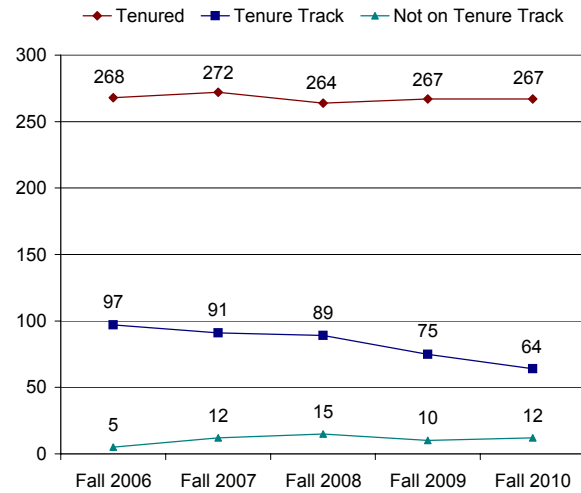
Faculty Trends (Fall 2006 - Fall 2010)

	FALL 2006	FALL 2007	Fall 2008	Fall 2009	Fall 2010	1-YEAR CHANGE	5-YEAR CHANGE
TOTAL FULL-TIME	370	375	368	352	343	-2.6%	-7.3%
GENDER							
Male	199	199	201	189	179	-5.3%	-10.1%
Female	171	176	167	163	164	0.6%	-4.1%
RACE / ETHNICITY							
Black	41	40	38	34	33	-2.9%	-19.5%
Hispanic	31	30	29	26	25	-3.8%	-19.4%
Asian	28	38	40	39	39	0.0%	39.3%
White	268	265	260	252	245	-2.8%	-8.6%
Not Reported	2	2	1	1	1	0.0%	-50.0%
TENURE STATUS							
Tenured	268	272	264	267	267	0.0%	-0.4%
Tenure Track	97	91	89	75	64	-14.7%	-34.0%
Not on Tenure Track	5	12	15	10	12	20.0%	140.0%
RANK							
Professor	144	138	138	130	123	-5.4%	-14.6%
Associate Professor	93	90	85	84	87	3.6%	-6.5%
Assistant Professor	129	143	137	132	127	-3.8%	-1.6%
Instructor	4	4	8	6	6	0.0%	50.0%
EDUCATION							
Highest Degree							
Doctorate	314	319	312	301	290	-3.7%	-7.6%
Master's	56	56	56	51	52	2.0%	-7.1%
Not Reported	0	0	0	0	1		
Terminal Degree in Field	337	339	332	322	311	-3.4%	-7.7%
AGE							
Average Age	55.03	54.42	55.22	55.77	55.89	0.2%	1.6%
Faculty >= 60	146	147	153	155	150	-3.2%	2.7%
PART-TIME FACULTY	14	21	20	24	24	0.0%	71.4%
ADJUNCT FACULTY	841	894	896	953	1,000	4.9%	18.9%
* Numbers represent full-time faculty only, unless otherwise noted.							

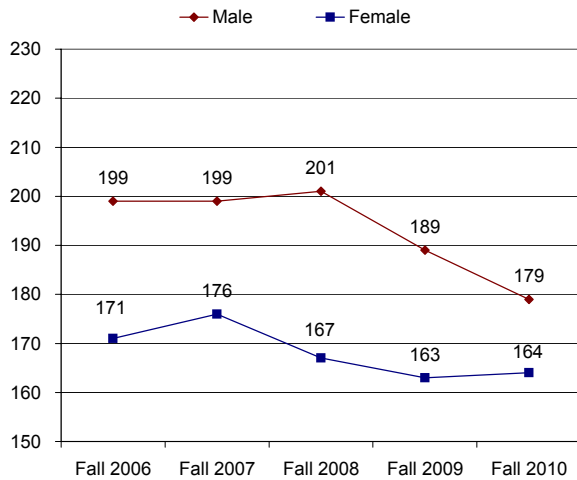
FACULTY HEADCOUNT Fall 2006 - Fall 2010



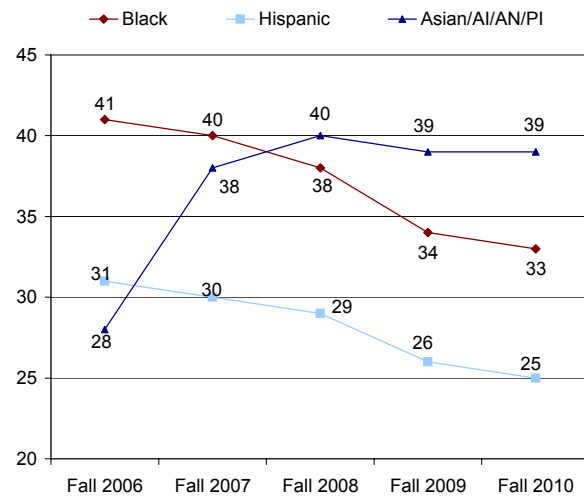
TENURE STATUS Fall 2006 - Fall 2010



GENDER Fall 2006 - Fall 2010



MINORITY FACULTY HEADCOUNT Fall 2006 - Fall 2010



Full-Time Faculty by Department College of Business and Public Administration

	FALL 2006	FALL 2007	FALL 2008	FALL 2009	FALL 2010	1-YEAR CHANGE	5-YEAR CHANGE
NUMBER OF FACULTY							
Accounting	9	8	8	10	10	0.0%	11.1%
Management	10	12	11	9	9	0.0%	-10.0%
Marketing	5	5	5	5	5	0.0%	0.0%
Public Adm	7	7	8	8	7	-12.5%	0.0%
Criminal Justice	5	6	6	6	6	0.0%	20.0%
Finance	2	5	5	4	3	-25.0%	50.0%
BPA Faculty Total:	38	43	43	42	40	-4.8%	5.3%

Full-Time Faculty by Department College of Education

	FALL 2006	FALL 2007	FALL 2008	FALL 2009	FALL 2010	1-YEAR CHANGE	5-YEAR CHANGE
NUMBER OF FACULTY							
Comm Disorder/Deaf	8	8	7	7	8	14.3%	0.0%
Early Childhd/Family	11	10	8	8	8	0.0%	-27.3%
Phys Ed/Rec/Health	17	16	16	16	16	0.0%	-5.9%
Counselor Edu	5	5	6	5	5	0.0%	0.0%
Elem Ed/Bil Ed	13	8	6	6	5	-16.7%	-61.5%
Mid Sec Ed	8	11	11	10	11	10.0%	37.5%
Global Edu Innovation	7	8	5	3	4	33.3%	-42.9%
Special Edu/Literacy	19	20	19	15	11	-26.7%	-42.1%
EDU Faculty Total:	91	86	78	70	68	-2.9%	-25.3%

Full-Time Faculty by Department College of Humanities and Social Sciences

	FALL 2006	FALL 2007	FALL 2008	FALL 2009	FALL 2010	1-YEAR CHANGE	5-YEAR CHANGE
NUMBER OF FACULTY							
Communication	12	12	12	12	12	0.0%	0.0%
English	25	25	26	25	21	-16.0%	-16.0%
History	11	12	14	16	15	-6.3%	36.4%
Political Science	7	7	7	10	9	-10.0%	28.6%
Psychology	19	20	18	15	17	13.3%	-10.5%
Social Work	6	6	5	3	3	0.0%	-50.0%
Sociology/Anthropology	12	12	14	13	12	-7.7%	0.0%
Gen Studies	0	0	0	0	4		
HSS Other	0	0	0	0	1		
Economics	8	6	6	7	7	0.0%	-12.5%
HSS Faculty Total:	107	107	108	101	101	0.0%	-5.6%

Full-Time Faculty by Department College of Natural, Applied, and Health Sciences

	FALL 2006	FALL 2007	FALL 2008	FALL 2009	FALL 2010	1-YEAR CHANGE	5-YEAR CHANGE
NUMBER OF FACULTY							
Biological Sciences	13	14	16	15	15	0.0%	15.4%
Chemistry/Physics	12	11	11	9	9	0.0%	-25.0%
Geology/Meteorology	10	11	11	11	10	-9.1%	0.0%
Nursing	7	9	8	7	8	14.3%	14.3%
Mathematics	12	13	13	13	17	30.8%	41.7%
Computer Science	14	15	15	13	8	-38.5%	-42.9%
Env & Life Sci	0	0	0	1	1	0.0%	
NAHS Faculty Total:	70	74	74	69	68	-1.4%	-2.9%

Full-Time Faculty by Department School of Visual and Performing Arts

	FALL 2006	FALL 2007	FALL 2008	FALL 2009	FALL 2010	1-YEAR CHANGE	5-YEAR CHANGE
NUMBER OF FACULTY							
Design	14	13	14	12	11	-8.3%	-21.4%
Fine Arts	16	14	14	14	13	-7.1%	-18.8%
Music	7	7	7	7	7	0.0%	0.0%
Theatre	6	6	6	7	7	0.0%	16.7%
VPA Faculty Total:	43	40	41	40	38	-5.0%	-11.6%

Full-Time Faculty by Department Nathan Weiss Graduate College

	FALL 2006	FALL 2007	FALL 2008	FALL 2009	FALL 2010	1-YEAR CHANGE	5-YEAR CHANGE
NUMBER OF FACULTY							
Edu Leadership	5	7	7	7	5	-28.6%	0.0%
Grad Mgmt Studies	3	3	3	3	4	33.3%	33.3%
Doctoral Stu Psyc	0	0	0	2	3	50.0%	
Social Work - Graduate	5	5	4	6	5	-16.7%	0.0%
Occupational Therapy - GR	3	4	4	3	3	0.0%	0.0%
NWGC Faculty Total:	16	19	18	21	20	-4.8%	25.0%

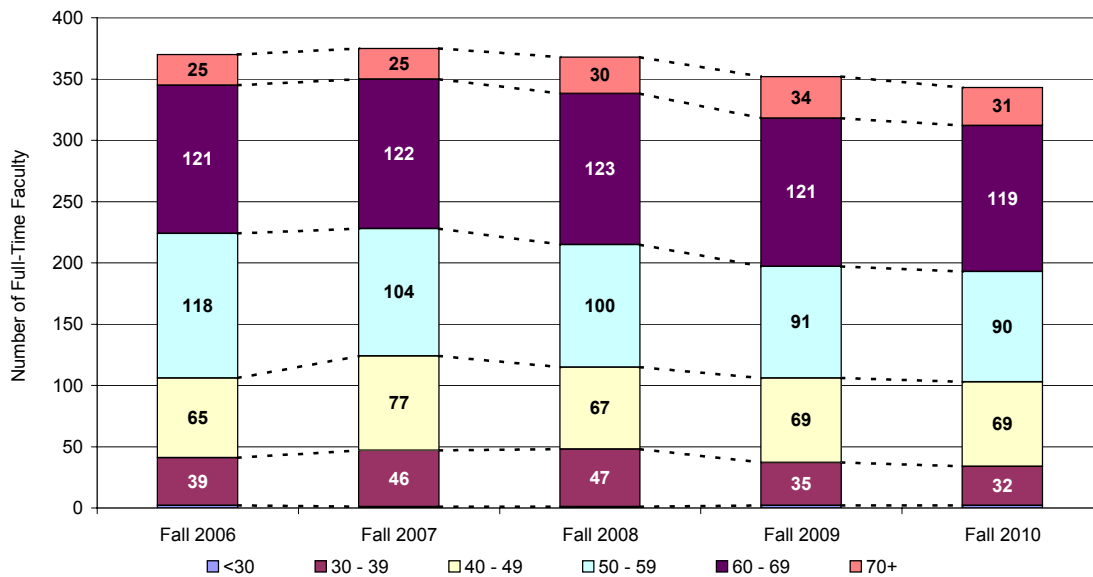
Full-Time Faculty by Department Other Academic Unit

	FALL 2006	FALL 2007	FALL 2008	FALL 2009	FALL 2010	1-YEAR CHANGE	5-YEAR CHANGE
NUMBER OF FACULTY							
Sci & Tech Edu	5	6	6	6	8	33.3%	60.0%
Other Acad Unit Faculty Total:	5	6	6	6	8	33.3%	60.0%

Distribution of Full-Time Faculty by Age

	FALL 2006	FALL 2007	FALL 2008	FALL 2009	FALL 2010		5-YEAR CHANGE
					No.	%	
AGE							
< 30	2	1	1	2	2	0.6%	0.0%
30 - 39	39	46	47	35	32	9.3%	-17.9%
40 - 49	65	77	67	69	69	20.1%	6.2%
50 - 59	118	104	100	91	90	26.2%	-23.7%
60 - 69	121	122	123	121	119	34.7%	-1.7%
70 +	25	25	30	34	31	9.0%	24.0%
TOTAL	370	375	368	352	343	100.0%	-7.3%
AVERAGE AGE	55.03	54.42	55.22	55.77	55.89		1.6%

Distribution of Full-Time Faculty by Age Group Fall 2006 - Fall 2010





Office of Institutional Research
Kean University
1000 Morris Avenue
Union, New Jersey 07083
<http://ir.kean.edu>
908.737.3470