



*Student and  
Faculty Profile*

**Kean University**



Fall 2009  
Office of Institutional Research



## *Quick Facts*

Founded:	1855	President:	Dr. Dawood Farahi
Campus Size:	185.4 acres	Mailing Address:	1000 Morris Avenue Union, New Jersey 07083
Main Campus:	121.5 acres		
East Campus:	28.5 acres		
Liberty Hall Campus:	35.4 acres	Main Phone:	(908) 737-KEAN (908) 737-5326
Number of Colleges:	6		
		Admissions:	(908) 737-7100
Degree Programs Offered			
Undergraduate:	48	Public Info:	(908) 737-NEWS (908) 737-6397
Graduate:			
- Master:	32		
- Post Master Professional Diploma:	2		
- Doctor:	2		
Average Class Size:	21		
Student/Faculty Ratio:	17:1		
2009-2010 Tuition and Fees:			
(Full-Time, In-State)			
Undergraduate:	\$9,445.50		
Graduate - Master:	\$13,082.40		
Graduate - Doctor:	\$14,630.00		

## *Contents*

<i>Enrollment</i> .....	<i>Page 01</i>
<i>Degrees Conferred</i> .....	<i>Page 23</i>
<i>Employees</i> .....	<i>Page 33</i>
<i>Faculty</i> .....	<i>Page 37</i>



# Kean University- Enrollment

## *Enrollment*

Page 02	At-a-Glance
Page 04	Enrollment Trends
Page 06	Enrollment by Geographic Origin
Page 08	Retention & Graduation Rates
Page 10	Enrollment by Department and Program
Page 16	Second Majors by Program
Page 17	Course FTE



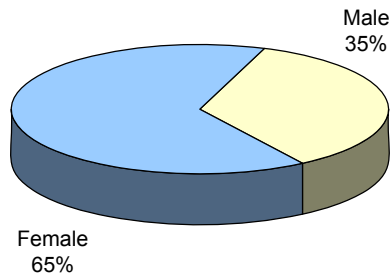
## Fall 2009 Enrollment At-a-Glance

	UNIVERSITY		UNDERGRADUATE		GRADUATE	
	No.	%	No.	%	No.	%
<b>ENROLLMENT</b>						
Headcount	15,051	100%	12,072	100%	2,979	100%
F.T.E.	11189.8		9672.4		1517.4	
<b>GENDER</b>						
Male	5,300	35.2%	4,619	38.3%	681	22.9%
Female	9,751	64.8%	7,453	61.7%	2,298	77.1%
<b>RACE / ETHNICITY</b>						
Black	2,804	18.6%	2,320	19.2%	484	16.2%
Hispanic	2,909	19.3%	2,557	21.2%	352	11.8%
Asian	1,083	7.2%	913	7.6%	170	5.7%
White	7,511	49.9%	5,655	46.8%	1,856	62.3%
Not Reported	744	4.9%	627	5.2%	117	3.9%
<b>ATTENDANCE STATUS</b>						
Full-Time	10,081	67.0%	9,355	77.5%	726	24.4%
Part-Time	4,970	33.0%	2,717	22.5%	2,253	75.6%
<b>ADMISSIONS STATUS</b>						
Regular	6,432	42.7%	4,059	33.6%	2,373	79.7%
Special	1,127	7.5%	1,127	9.3%		
E.O.F.	918	6.1%	918	7.6%		
Transfer	5,475	36.4%	5,475	45.4%		
E.O.F. Transfer	323	2.1%	323	2.7%		
Other	776	5.2%	170	1.4%	606	20.3%
<b>REGISTRATION STATUS</b>						
First-Time	2,870	19.1%	1,635	13.5%	1,235	41.5%
Transfer	1,733	11.5%	1,733	14.4%		
Stop-out / Readmit	583	3.9%	583	4.8%		
Continuing	9,865	65.5%	8,121	67.3%	1,744	58.5%
<b>AGE</b>						
<25	8,953	59.5%	8,481	70.3%	472	15.8%
25 - 34	3,638	24.2%	2,282	18.9%	1,356	45.5%
35 - 44	1,309	8.7%	750	6.2%	559	18.8%
45 - 54	872	5.8%	463	3.8%	409	13.7%
55+	279	1.9%	96	0.8%	183	6.1%
Average Age	27		25		34	
<b>MATRICULATION STATUS</b>						
Degree Seeking	13,643	90.6%	11,730	97.2%	1,913	64.2%
Certificate / Non-Degree	717	4.8%	240	2.0%	477	16.0%
Non-Matriculated	691	4.6%	102	0.8%	589	19.8%
<b>STATE RESIDENCE</b>						
New Jersey	14,494	96.3%	11,644	96.5%	2,850	95.7%
Out-of-State	275	1.8%	209	1.7%	66	2.2%
International	282	1.9%	219	1.8%	63	2.1%

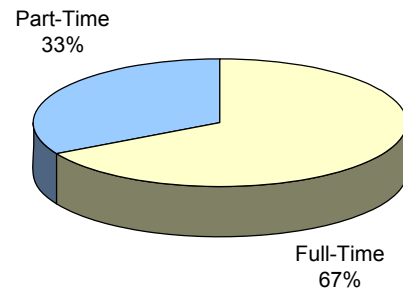
Additional information is available online at <http://ir.kean.edu>.



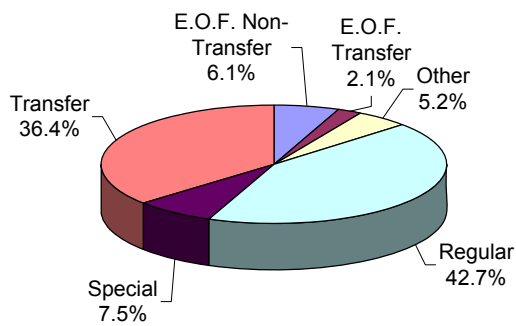
**DISTRIBUTION OF STUDENTS  
By Gender**



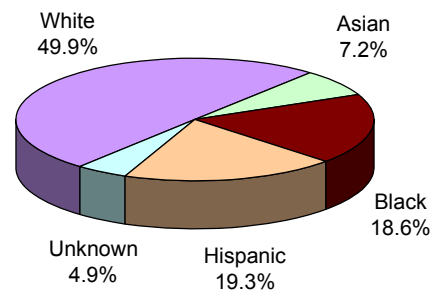
**DISTRIBUTION OF STUDENTS  
By Attendance Status**



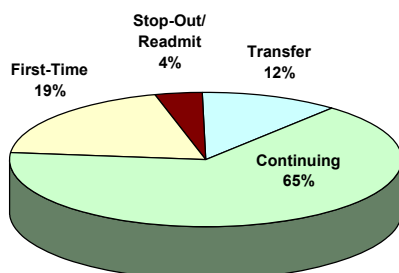
**DISTRIBUTION OF STUDENTS  
By Admit Status**



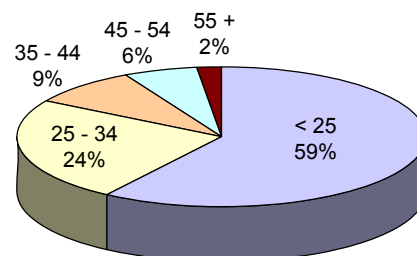
**DISTRIBUTION OF STUDENTS  
By Race/Ethnicity**



**DISTRIBUTION OF STUDENTS  
By Registration Status**



**DISTRIBUTION OF STUDENTS  
By Age Group**

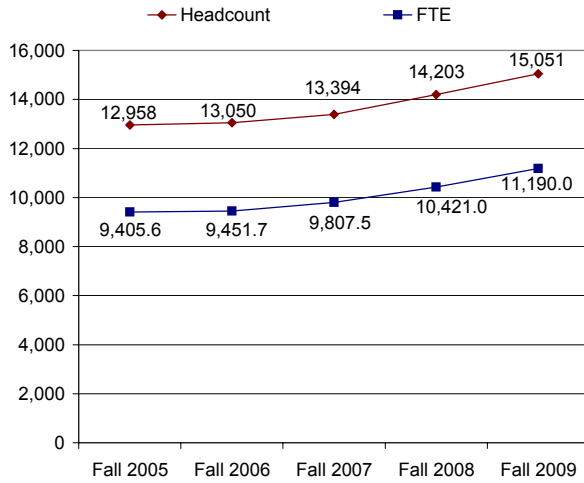


## Enrollment Trends (Fall 2005 - Fall 2009)

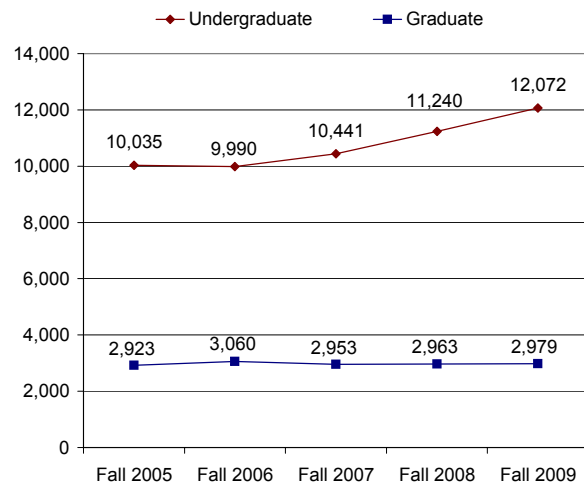
	FALL 2005	FALL 2006	FALL 2007	FALL 2008	FALL 2009	1 YEAR CHANGE	5 YEAR CHANGE
<b>ENROLLMENT</b>							
Headcount	12,958	13,050	13,394	14,203	15,051	6.0%	16.2%
F.T.E.	9405.6	9451.7	9807.5	10421.0	11189.8	7.4%	19.0%
Undergraduate	10,035	9,990	10,441	11,240	12,072	7.4%	20.3%
Graduate	2,923	3,060	2,953	2,963	2,979	0.5%	1.9%
<b>GENDER</b>							
Male	4,322	4,343	4,515	4,846	5,300	9.4%	22.6%
Female	8,636	8,707	8,879	9,357	9,751	4.2%	12.9%
<b>RACE / ETHNICITY</b>							
Black	2,701	2,525	2,570	2,745	2,804	2.1%	3.8%
Hispanic	2,312	2,271	2,405	2,634	2,909	10.4%	25.8%
Asian	831	810	809	901	1,083	20.2%	30.3%
White	6,657	6,866	6,985	7,232	7,511	3.9%	12.8%
Not Reported	457	578	625	691	744	7.7%	62.8%
<b>ATTENDANCE STATUS</b>							
Full-Time	8,204	8,250	8,590	9,181	10,081	9.8%	22.9%
Part-Time	4,754	4,800	4,804	5,022	4,970	-1.0%	4.5%
<b>ADMISSIONS STATUS</b>							
Regular	6,583	6,488	6,412	6,425	6,432	0.1%	-2.3%
Special	514	517	724	930	1,127	21.2%	119.3%
E.O.F.	873	834	921	937	918	-2.0%	5.2%
Transfer	3,966	4,125	4,366	4,895	5,475	11.8%	38.0%
E.O.F. Transfer	223	207	246	273	323	18.3%	44.8%
Other	799	879	725	743	776	4.4%	-2.9%
<b>REGISTRATION STATUS</b>							
First-Time	2,585	2,724	2,563	2,624	2,870	9.4%	11.0%
Transfer	992	1,256	1,278	1,497	1,733	15.8%	74.7%
Stop-out / Readmit	498	444	531	604	583	-3.5%	17.1%
Continuing	8,883	8,626	9,022	9,478	9,865	4.1%	11.1%
<b>AGE</b>							
<25	7,208	7,425	7,753	8,226	8,953	8.8%	24.2%
25 - 34	3,172	3,048	3,129	3,446	3,638	5.6%	14.7%
35 - 44	1,446	1,395	1,342	1,351	1,309	-3.1%	-9.5%
45 - 54	896	930	893	913	872	-4.5%	-2.7%
55+	236	252	277	267	279	4.5%	18.2%
Average Age	27.35	27.27	27.04	26.93	26.59	-1.2%	-2.8%
<b>MATRICULATION STATUS</b>							
Degree Seeking	11,569	11,600	12,062	12,830	13,643	6.3%	17.9%
Certificate / Non-Degree	644	613	638	656	717	9.3%	11.3%
Non-Matriculated	745	837	694	717	691	-3.6%	-7.2%
<b>STATE RESIDENCE</b>							
New Jersey	12,469	12,544	12,888	13,680	14,494	6.0%	16.2%
Out-of-State	201	237	230	246	275	11.8%	36.8%
International	287	268	276	277	282	1.8%	-1.7%
Not Reported	1	1	0	0	0		-100.0%



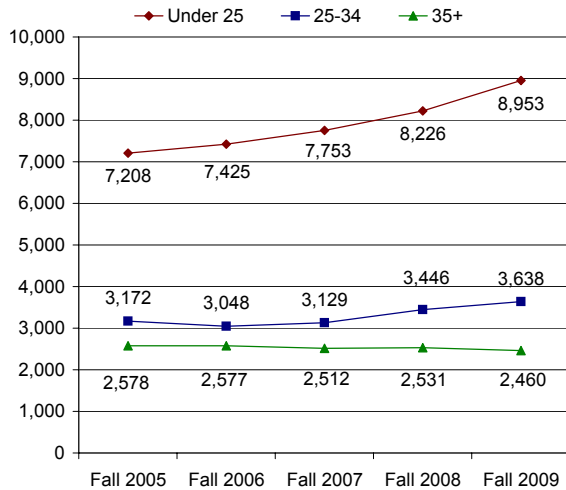
### HEADCOUNT & FTE Fall 2005 - Fall 2009



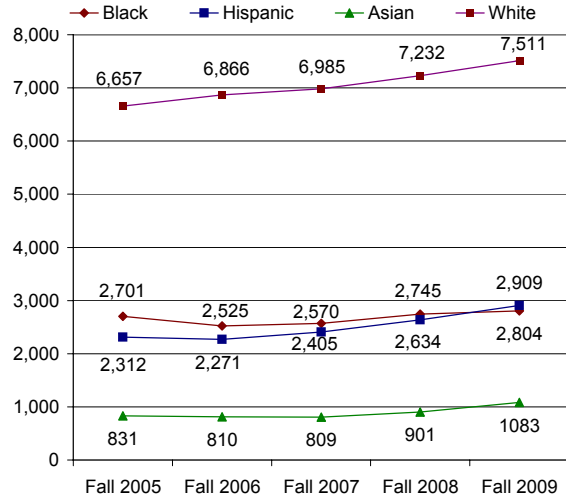
### UNDERGRADUATE & GRADUATE Fall 2005 - Fall 2009



### AGE GROUP Fall 2005 - Fall 2009



### RACE/ETHNICITY Fall 2005 - Fall 2009



## Enrollment by Geographic Origin

	FALL 2005	FALL 2006	FALL 2007	FALL 2008	FALL 2009		5-YEAR CHANGE
					No.	%	
<b>NEW JERSEY RESIDENTS</b>	<b>12,469</b>	<b>12,544</b>	<b>12,888</b>	<b>13,680</b>	<b>14,494</b>	<b>96.3%</b>	<b>16.2%</b>
Union	3,849	3,633	3,692	3,752	3,819	25.4%	-0.8%
Middlesex	3,101	3,000	3,049	3,263	3,277	21.8%	5.7%
Essex	1,681	1,518	1,523	1,655	1,734	11.5%	3.2%
Ocean	277	521	681	940	1,219	8.1%	340.1%
Monmouth	942	925	930	904	971	6.5%	3.1%
Somerset	396	694	714	769	804	5.3%	103.0%
Hudson	480	504	536	588	628	4.2%	30.8%
Bergen	439	440	443	465	495	3.3%	12.8%
Morris	427	390	383	380	445	3.0%	4.2%
Passaic	246	245	258	262	303	2.0%	23.2%
Hunterdon	101	126	135	135	150	1.0%	48.5%
Mercer	114	118	114	136	155	1.0%	36.0%
Burlington	115	114	106	115	130	0.9%	13.0%
Warren	60	62	60	75	98	0.7%	63.3%
Sussex	65	48	43	51	75	0.5%	15.4%
Camden	58	69	77	56	72	0.5%	24.1%
Gloucester	23	34	39	38	38	0.3%	65.2%
Atlantic	53	54	51	51	51	0.3%	-3.8%
Cape May	18	25	18	13	8	0.1%	-55.6%
Cumberland	16	14	22	20	14	0.1%	-12.5%
Salem	8	9	14	12	8	0.1%	0.0%
County Unknown	0	1	0	0	0	0.0%	
<b>NON-RESIDENTS</b>	<b>201</b>	<b>237</b>	<b>230</b>	<b>246</b>	<b>275</b>	<b>1.8%</b>	<b>36.8%</b>
New York	140	163	159	184	204	1.4%	45.7%
Pennsylvania	24	35	26	25	35	0.2%	45.8%
Other	37	39	45	37	36	0.2%	-2.7%
<b>INTERNATIONAL</b>	<b>287</b>	<b>268</b>	<b>276</b>	<b>277</b>	<b>282</b>	<b>1.9%</b>	<b>-1.7%</b>
<b>NOT REPORTED</b>	<b>1</b>	<b>1</b>	<b>0</b>	<b>0</b>	<b>0</b>	<b>0.0%</b>	<b>-100.0%</b>
<b>TOTAL</b>	<b>12,958</b>	<b>13,050</b>	<b>13,394</b>	<b>14,203</b>	<b>15,051</b>	<b>100.0%</b>	<b>16.2%</b>

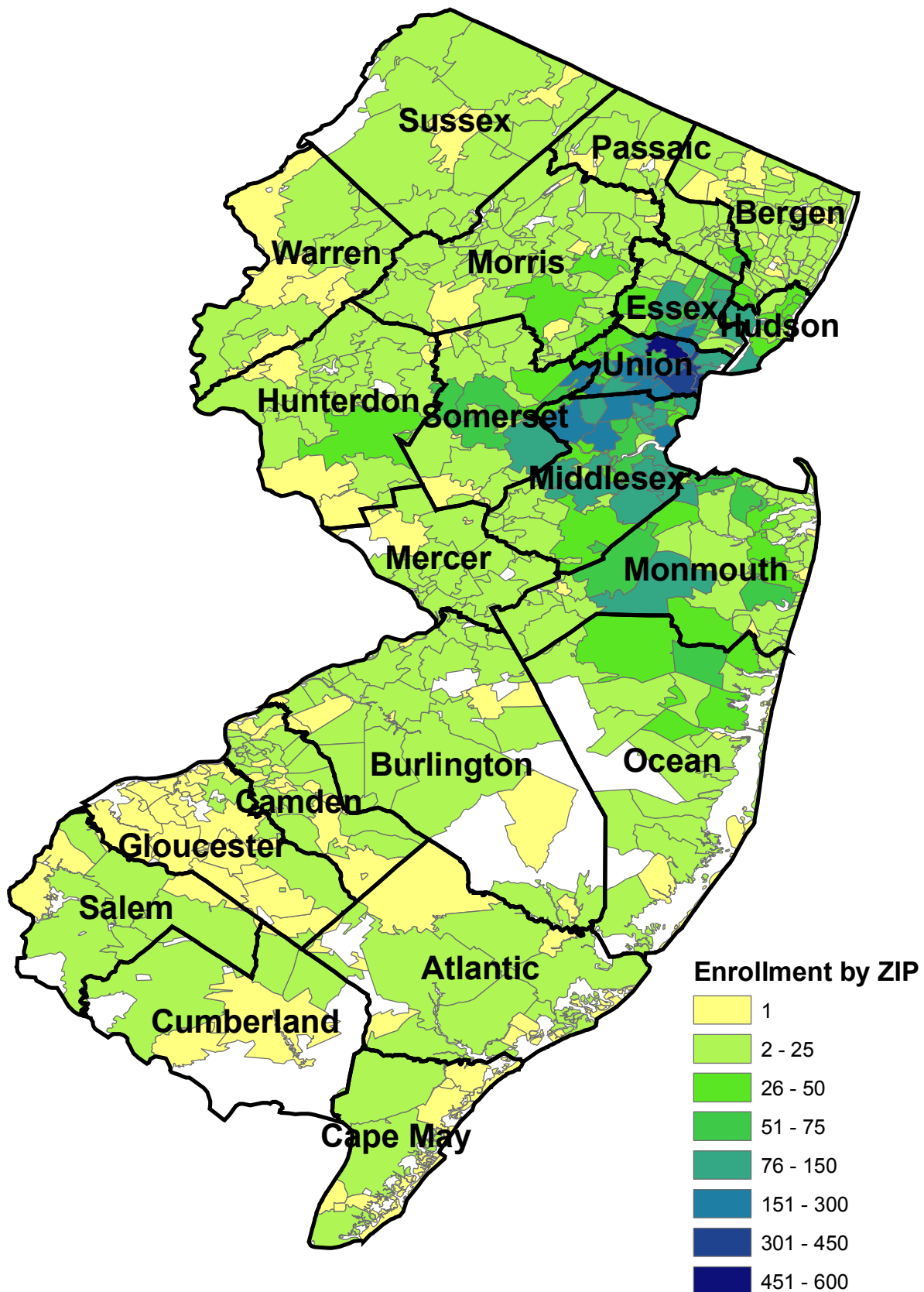
### Top 10 Countries of Citizenship for International Students (in alphabetical order)

Brazil	China
Colombia	Ecuador
Germany	Ghana
India	Kenya
Nigeria	Poland

International students come from 67 different countries and areas.



Fall 2009 Enrollment by ZIP Code



### First-Time, Full-Time Freshmen Retention Rates

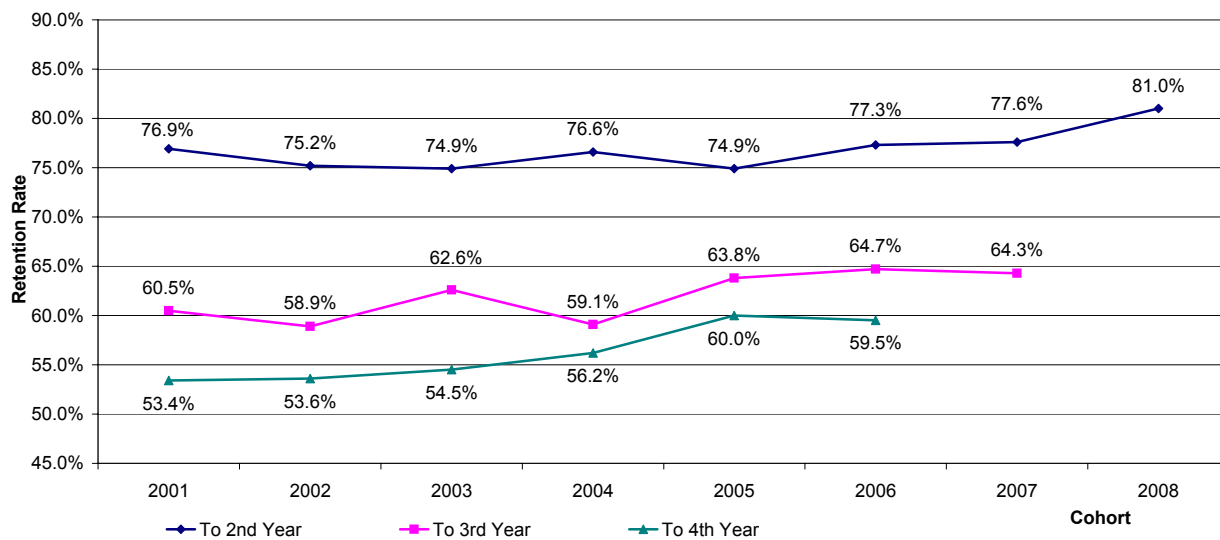
COHORT YEAR	HEAD COUNT	# CONTINUED			% CONTINUED		
		TO 2ND YEAR	TO 3RD YEAR	TO 4TH YEAR	TO 2ND YEAR	TO 3RD YEAR	TO 4TH YEAR
1999	999	780	631	587	78.08%	63.16%	58.76%
2000	1,161	922	749	679	79.41%	64.51%	58.48%
2001	1,132	871	685	605	76.94%	60.51%	53.45%
2002	1,317	991	776	706	75.25%	58.92%	53.61%
2003	1,311	982	821	714	74.90%	62.62%	54.46%
2004	1,254	961	741	705	76.63%	59.09%	56.22%
2005	1,391	1,042	887	835	74.91%	63.77%	60.03%
2006	1,394	1,078	902	829	77.33%	64.71%	59.47%
2007	1,447	1,123	930	-	77.61%	64.27%	-
2008	1,418	1,148	-	-	80.96%	-	-

### First-Time, Full-Time Freshmen Graduation Rates

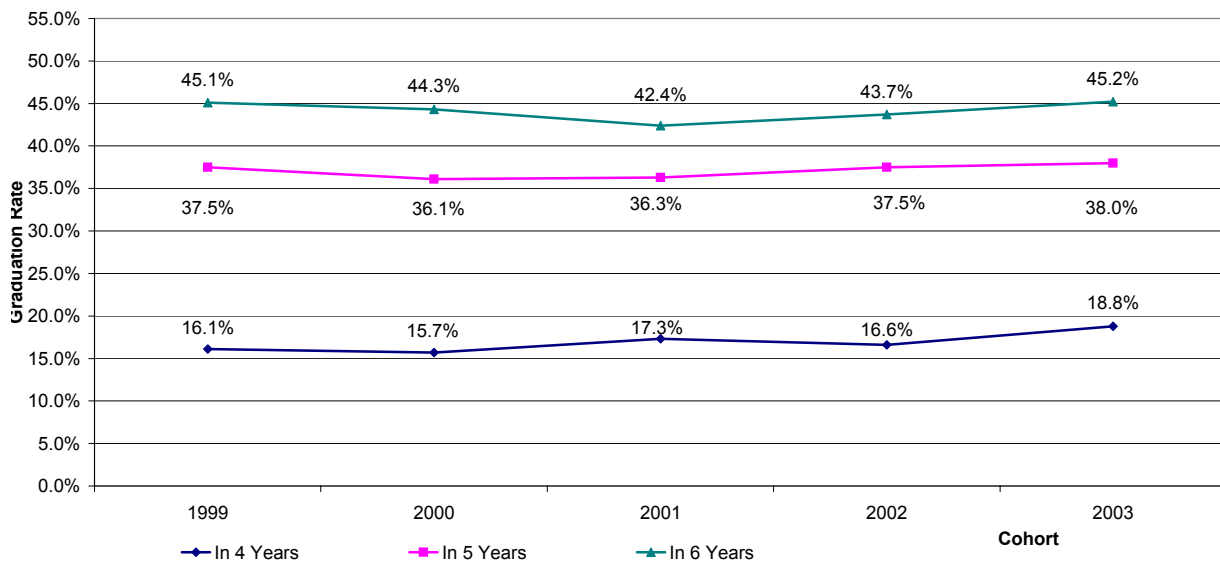
COHORT YEAR	HEAD COUNT	# GRADUATED			% GRADUATED		
		IN 4 YEARS	IN 5 YEARS	IN 6 YEARS	IN 4 YEARS	IN 5 YEARS	IN 6 YEARS
1999	999	161	375	451	16.12%	37.54%	45.15%
2000	1,161	182	419	514	15.68%	36.09%	44.27%
2001	1,132	196	411	480	17.31%	36.31%	42.40%
2002	1,317	218	494	575	16.55%	37.51%	43.66%
2003	1,311	247	498	593	18.84%	37.99%	45.23%



### First-Time, Full-Time Degree-Seeking Undergraduate Retention Rates 2001 - 2008 Cohorts



### First-Time, Full-Time Degree-Seeking Undergraduate Graduation Rates 1999 - 2003 Cohorts



## Enrollment by Department and Program College of Business and Public Administration

	FALL 2005	FALL 2006	FALL 2007	FALL 2008	FALL 2009	1-YEAR CHANGE	5-YEAR CHANGE
<b>ENROLLMENT</b>							
<b>Accounting</b>							
Accounting (UG)	399	368	433	516	581	12.6%	45.6%
Accounting (GR)	91	88	74	67	72	7.5%	-20.9%
<b>Accounting Total:</b>	<b>490</b>	<b>456</b>	<b>507</b>	<b>583</b>	<b>653</b>	<b>12.0%</b>	<b>33.3%</b>
<b>Criminal Justice</b>							
Criminal Justice (UG)	513	530	547	621	654	5.3%	27.5%
Criminal Justice (GR)	0	0	0	0	1		
<b>Criminal Justice Total:</b>	<b>513</b>	<b>530</b>	<b>547</b>	<b>621</b>	<b>655</b>	<b>5.5%</b>	<b>27.7%</b>
<b>Economics/Finance</b>							
Economics (UG)	178	175	204	228	132	-42.1%	-25.8%
Finance (UG)	166	149	171	190	209	10.0%	25.9%
<b>Economics/Finance Total:</b>	<b>344</b>	<b>324</b>	<b>375</b>	<b>418</b>	<b>341</b>	<b>-18.4%</b>	<b>-0.9%</b>
<b>Management</b>							
Management Sci. (UG)	733	669	712	767	884	15.3%	20.6%
<b>Management Total:</b>	<b>733</b>	<b>669</b>	<b>712</b>	<b>767</b>	<b>884</b>	<b>15.3%</b>	<b>20.6%</b>
<b>Marketing</b>							
Marketing (UG)	276	284	292	294	311	5.8%	12.7%
<b>Marketing Total:</b>	<b>276</b>	<b>284</b>	<b>292</b>	<b>294</b>	<b>311</b>	<b>5.8%</b>	<b>12.7%</b>
<b>Public Adm</b>							
Public Admin. (UG)	108	105	118	121	110	-9.1%	1.9%
Public Admin. (GR)	169	179	145	138	140	1.4%	-17.2%
<b>Public Adm Total:</b>	<b>277</b>	<b>284</b>	<b>263</b>	<b>259</b>	<b>250</b>	<b>-3.5%</b>	<b>-9.7%</b>
<b>BPA UG Total:</b>	<b>2,373</b>	<b>2,280</b>	<b>2,477</b>	<b>2,737</b>	<b>2,881</b>	<b>5.3%</b>	<b>21.4%</b>
<b>BPA GR Total:</b>	<b>260</b>	<b>267</b>	<b>219</b>	<b>205</b>	<b>213</b>	<b>3.9%</b>	<b>-18.1%</b>
<b>BPA Total:</b>	<b>2,633</b>	<b>2,547</b>	<b>2,696</b>	<b>2,942</b>	<b>3,094</b>	<b>5.2%</b>	<b>17.5%</b>

\* Numbers in red represent small programs (undergraduate<50, graduate<30)



## Enrollment by Department and Program College of Education

	FALL 2005	FALL 2006	FALL 2007	FALL 2008	FALL 2009	1-YEAR CHANGE	5-YEAR CHANGE
<b>ENROLLMENT</b>							
<b>Comm Disorder/Deaf</b>							
Speech Lang. Pathology (GR)	95	103	110	125	135	8.0%	42.1%
Speech, Lang Hear. Sci. (UG)	119	129	138	174	205	17.8%	72.3%
<b>Comm Disorder/Deaf Total:</b>	<b>214</b>	<b>232</b>	<b>248</b>	<b>299</b>	<b>340</b>	<b>13.7%</b>	<b>58.9%</b>
<b>Comm Sci/Edu Svcs</b>							
Edu/Media/Spec. (GR)	41	40	24	23	17	-26.1%	-58.5%
Reading Spec. (GR)	100	93	83	76	72	-5.3%	-28.0%
<b>Comm Sci/Edu Svcs Total:</b>	<b>141</b>	<b>133</b>	<b>107</b>	<b>99</b>	<b>89</b>	<b>-10.1%</b>	<b>-36.9%</b>
<b>Counselor Edu</b>							
Counselor Edu (GR)	230	220	238	236	245	3.8%	6.5%
<b>Counselor Edu Total:</b>	<b>230</b>	<b>220</b>	<b>238</b>	<b>236</b>	<b>245</b>	<b>3.8%</b>	<b>6.5%</b>
<b>Early Childhd/Family</b>							
Early Childhood Edu. (UG)	547	570	585	548	563	2.7%	2.9%
Early Childhood Edu. (GR)	126	102	70	61	60	-1.6%	-52.4%
<b>Early Childhd/Family Total:</b>	<b>673</b>	<b>672</b>	<b>655</b>	<b>609</b>	<b>623</b>	<b>2.3%</b>	<b>-7.4%</b>
<b>Elem Ed/Bil Ed</b>							
Elementary Edu (UG)	0	24	73	160	360	125.0%	
Instruction & Curriculum (GR)	50	44	51	56	51	-8.9%	2.0%
<b>Elem Ed/Bil Ed Total:</b>	<b>50</b>	<b>68</b>	<b>124</b>	<b>216</b>	<b>411</b>	<b>90.3%</b>	<b>722.0%</b>
<b>Global Edu Innovation</b>							
Spanish (UG)	203	200	212	179	152	-15.1%	-25.1%
<b>Global Edu Innovation Total:</b>	<b>203</b>	<b>200</b>	<b>212</b>	<b>179</b>	<b>152</b>	<b>-15.1%</b>	<b>-25.1%</b>
<b>Mid Sec Ed</b>							
Elem/Mid/Sec Edu (UG)	840	836	769	716	691	-3.5%	-17.7%
Instruction & Curriculum - MSE (GR)	183	164	142	141	125	-11.3%	-31.7%
<b>Mid Sec Ed Total:</b>	<b>1,023</b>	<b>1,000</b>	<b>911</b>	<b>857</b>	<b>816</b>	<b>-4.8%</b>	<b>-20.2%</b>
<b>Phys Ed/Rec/Health</b>							
Athletic Training (UG)	0	0	51	77	98	27.3%	
Exercise Science (GR)	20	23	22	22	17	-22.7%	-15.0%
Physical Edu (UG)	425	476	478	550	695	26.4%	63.5%
Recreation Admin. (UG)	59	58	72	86	89	3.5%	50.8%
<b>Phys Ed/Rec/Health Total:</b>	<b>504</b>	<b>557</b>	<b>623</b>	<b>735</b>	<b>899</b>	<b>22.3%</b>	<b>78.4%</b>
<b>Special Edu</b>							
Educator of Indivs with Disabilities (UG)	329	214	206	271	394	45.4%	19.8%
Special Edu (GR)	231	277	317	351	365	4.0%	58.0%
<b>Special Edu Total:</b>	<b>560</b>	<b>491</b>	<b>523</b>	<b>622</b>	<b>759</b>	<b>22.0%</b>	<b>35.5%</b>
<b>EDU UG Total:</b>	<b>2,522</b>	<b>2,507</b>	<b>2,584</b>	<b>2,761</b>	<b>3,247</b>	<b>17.6%</b>	<b>28.7%</b>
<b>EDU GR Total:</b>	<b>1,076</b>	<b>1,066</b>	<b>1,057</b>	<b>1,091</b>	<b>1,087</b>	<b>-0.4%</b>	<b>1.0%</b>
<b>EDU Total:</b>	<b>3,598</b>	<b>3,573</b>	<b>3,641</b>	<b>3,852</b>	<b>4,334</b>	<b>12.5%</b>	<b>20.5%</b>

\* Numbers in red represent small programs (undergraduate<50, graduate<30)

## Enrollment by Department and Program

### College of Humanities and Social Sciences

	FALL 2005	FALL 2006	FALL 2007	FALL 2008	FALL 2009	1-YEAR CHANGE	5-YEAR CHANGE
<b>ENROLLMENT</b>							
<b>Communication</b>							
Communication (UG)	200	191	201	199	242	21.6%	21.0%
Communication - Broadcast (UG)	134	91	51	19	7	-63.2%	-94.8%
Communication Studies (GR)	12	16	21	17	14	-17.6%	16.7%
Media Film (UG)	0	35	102	154	184	19.5%	
<b>Communication Total:</b>	<b>346</b>	<b>333</b>	<b>375</b>	<b>389</b>	<b>447</b>	<b>14.9%</b>	<b>29.2%</b>
<b>English</b>							
English (UG)	281	315	348	387	433	11.9%	54.1%
English Writing (GR)	0	0	0	0	2		
<b>English Total:</b>	<b>281</b>	<b>315</b>	<b>348</b>	<b>387</b>	<b>435</b>	<b>12.4%</b>	<b>54.8%</b>
<b>History</b>							
History (UG)	347	397	401	379	420	10.8%	21.0%
<b>History Total:</b>	<b>347</b>	<b>397</b>	<b>401</b>	<b>379</b>	<b>420</b>	<b>10.8%</b>	<b>21.0%</b>
<b>Philosophy/Religion</b>							
Philosophy and Religion (UG)	7	14	8	13	15	15.4%	114.3%
<b>Philosophy/Religion Total:</b>	<b>7</b>	<b>14</b>	<b>8</b>	<b>13</b>	<b>15</b>	<b>15.4%</b>	<b>114.3%</b>
<b>Political Science</b>							
Political Science (UG)	119	100	118	139	127	-8.6%	6.7%
Political Science (GR)	7	17	18	16	10	-37.5%	42.9%
<b>Political Science Total:</b>	<b>126</b>	<b>117</b>	<b>136</b>	<b>155</b>	<b>137</b>	<b>-11.6%</b>	<b>8.7%</b>
<b>Psychology</b>							
Behavioral Sci (GR)	55	48	43	38	44	15.8%	-20.0%
Edu Psych (GR)	25	10	12	10	14	40.0%	-44.0%
Marri & Fam Therapy (GR)	29	31	33	24	18	-25.0%	-37.9%
Psych Rehab (UG)	44	41	38	54	50	-7.4%	13.6%
Psychology (UG)	811	796	816	833	895	7.4%	10.4%
Psychology (GR)	0	0	0	0	5		
School Psychology (GR)	26	35	32	32	24	-25.0%	-7.7%
<b>Psychology Total:</b>	<b>990</b>	<b>961</b>	<b>974</b>	<b>991</b>	<b>1,050</b>	<b>6.0%</b>	<b>6.1%</b>
<b>Social Work</b>							
Social Work (UG)	167	173	213	252	204	-19.0%	22.2%
<b>Social Work Total:</b>	<b>167</b>	<b>173</b>	<b>213</b>	<b>252</b>	<b>204</b>	<b>-19.0%</b>	<b>22.2%</b>
<b>Sociology/Anthropology</b>							
Soc/SocJust (GR)	0	0	0	12	24	100.0%	
Sociology (UG)	188	197	242	294	246	-16.3%	30.9%
<b>Sociology/Anthropology Total:</b>	<b>188</b>	<b>197</b>	<b>242</b>	<b>306</b>	<b>270</b>	<b>-11.8%</b>	<b>43.6%</b>
<i>HSS UG Total:</i>	<i>2,298</i>	<i>2,350</i>	<i>2,538</i>	<i>2,723</i>	<i>2,823</i>	<i>3.7%</i>	<i>22.8%</i>
<i>HSS GR Total:</i>	<i>154</i>	<i>157</i>	<i>159</i>	<i>149</i>	<i>155</i>	<i>4.0%</i>	<i>0.6%</i>
<b>HSS Total:</b>	<b>2,452</b>	<b>2,507</b>	<b>2,697</b>	<b>2,872</b>	<b>2,978</b>	<b>3.7%</b>	<b>21.5%</b>

\* Numbers in red represent small programs (undergraduate<50, graduate<30)

## Enrollment by Department and Program College of Natural, Applied, and Health Sciences

	FALL 2005	FALL 2006	FALL 2007	FALL 2008	FALL 2009	1-YEAR CHANGE	5-YEAR CHANGE
<b>ENROLLMENT</b>							
<b>Biological Sciences</b>							
Biology (UG)	396	419	479	524	632	20.6%	59.6%
Medical Tech. (UG)	58	59	54	61	71	16.4%	22.4%
<b>Biological Sciences Total:</b>	<b>454</b>	<b>478</b>	<b>533</b>	<b>585</b>	<b>703</b>	<b>20.2%</b>	<b>54.8%</b>
<b>Chemistry/Physics</b>							
Chemistry (UG)	98	91	90	111	90	-18.9%	-8.2%
<b>Chemistry/Physics Total:</b>	<b>98</b>	<b>91</b>	<b>90</b>	<b>111</b>	<b>90</b>	<b>-18.9%</b>	<b>-8.2%</b>
<b>Computer Science</b>							
Comp.Integrated Design & Mfg. Tech. (UG)	14	17	10	1	0	-100.0%	-100.0%
Computer Science (UG)	192	147	141	132	161	22.0%	-16.1%
Electronics Tech. (UG)	34	23	21	15	7	-53.3%	-79.4%
Tech.Edu. (UG)	2	3	1	0	0		-100.0%
Telecomm.Info.Tech. (UG)	43	28	23	27	24	-11.1%	-44.2%
<b>Computer Science Total:</b>	<b>285</b>	<b>218</b>	<b>196</b>	<b>175</b>	<b>192</b>	<b>9.7%</b>	<b>-32.6%</b>
<b>Geology/Meteorology</b>							
Earth Science (UG)	85	76	82	86	83	-3.5%	-2.4%
<b>Geology/Meteorology Total:</b>	<b>85</b>	<b>76</b>	<b>82</b>	<b>86</b>	<b>83</b>	<b>-3.5%</b>	<b>-2.4%</b>
<b>Health Info Mgmt</b>							
HIM (UG)	79	58	42	32	25	-21.9%	-68.4%
<b>Health Info Mgmt Total:</b>	<b>79</b>	<b>58</b>	<b>42</b>	<b>32</b>	<b>25</b>	<b>-21.9%</b>	<b>-68.4%</b>
<b>Mathematics</b>							
Comp/Stat/Math. (GR)	12	6	6	7	7	0.0%	-41.7%
Math. Edu. (GR)	18	13	15	13	10	-23.1%	-44.4%
Math. Science (UG)	205	201	236	249	265	6.4%	29.3%
<b>Mathematics Total:</b>	<b>235</b>	<b>220</b>	<b>257</b>	<b>269</b>	<b>282</b>	<b>4.8%</b>	<b>20.0%</b>
<b>Nursing</b>							
M.S.N./M.P.A. in Nursing (GR)	18	18	11	5	6	20.0%	-66.7%
Nursing (UG)	158	253	270	298	287	-3.7%	81.6%
Nursing (GR)	66	67	71	89	90	1.1%	36.4%
<b>Nursing Total:</b>	<b>242</b>	<b>338</b>	<b>352</b>	<b>392</b>	<b>383</b>	<b>-2.3%</b>	<b>58.3%</b>
<i>NAHS UG Total:</i>	<i>1,372</i>	<i>1,375</i>	<i>1,450</i>	<i>1,536</i>	<i>1,645</i>	<i>7.1%</i>	<i>19.9%</i>
<i>NAHS GR Total:</i>	<i>114</i>	<i>104</i>	<i>103</i>	<i>114</i>	<i>113</i>	<i>-0.9%</i>	<i>-0.9%</i>
<b>NAHS Total:</b>	<b>1,486</b>	<b>1,479</b>	<b>1,553</b>	<b>1,650</b>	<b>1,758</b>	<b>6.5%</b>	<b>18.3%</b>

\* Numbers in red represent small programs (undergraduate<50, graduate<30)

## Enrollment by Department and Program School of Visual and Performing Arts

	FALL 2005	FALL 2006	FALL 2007	FALL 2008	FALL 2009	1-YEAR CHANGE	5-YEAR CHANGE
<b>ENROLLMENT</b>							
<b>Design</b>							
Graphic Comm (UG)	68	68	62	60	49	-18.3%	-27.9%
Graphic Comm (GR)	22	31	35	24	16	-33.3%	-27.3%
Industrial Design (UG)	34	29	30	49	54	10.2%	58.8%
Interior Design (UG)	157	141	132	148	156	5.4%	-0.6%
Visual Comm (UG)	166	169	166	160	150	-6.3%	-9.6%
<b>Design Total:</b>	<b>447</b>	<b>438</b>	<b>425</b>	<b>441</b>	<b>425</b>	<b>-3.6%</b>	<b>-4.9%</b>
<b>Fine Arts</b>							
Art History (UG)	20	18	22	19	15	-21.1%	-25.0%
Fine Arts (UG)	130	135	117	105	121	15.2%	-6.9%
Fine Arts Edu (GR)	59	52	58	49	48	-2.0%	-18.6%
Studio Art (UG)	41	36	37	31	37	19.4%	-9.8%
<b>Fine Arts Total:</b>	<b>250</b>	<b>241</b>	<b>234</b>	<b>204</b>	<b>221</b>	<b>8.3%</b>	<b>-11.6%</b>
<b>Music</b>							
Music (UG)	25	25	32	39	33	-15.4%	32.0%
Music Edu. (UG)	46	36	41	41	43	4.9%	-6.5%
<b>Music Total:</b>	<b>71</b>	<b>61</b>	<b>73</b>	<b>80</b>	<b>76</b>	<b>-5.0%</b>	<b>7.0%</b>
<b>Theatre</b>							
Speech & Theatre (UG)	6	11	12	6	1	-83.3%	-83.3%
Theatre (UG)	44	50	59	61	65	6.6%	47.7%
Theatre Design & Tech. (UG)	0	0	2	3	6	100.0%	
Theatre Performance (UG)	0	0	6	14	10	-28.6%	
<b>Theatre Total:</b>	<b>50</b>	<b>61</b>	<b>79</b>	<b>84</b>	<b>82</b>	<b>-2.4%</b>	<b>64.0%</b>
<b>VPA Other</b>							
Liberal Studies (GR)	24	30	23	20	16	-20.0%	-33.3%
<b>VPA Other Total:</b>	<b>24</b>	<b>30</b>	<b>23</b>	<b>20</b>	<b>16</b>	<b>-20.0%</b>	<b>-33.3%</b>
<i>VPA UG Total:</i>	<i>737</i>	<i>718</i>	<i>718</i>	<i>736</i>	<i>740</i>	<i>0.5%</i>	<i>0.4%</i>
<i>VPA GR Total:</i>	<i>105</i>	<i>113</i>	<i>116</i>	<i>93</i>	<i>80</i>	<i>-14.0%</i>	<i>-23.8%</i>
<b>VPA Total:</b>	<b>842</b>	<b>831</b>	<b>834</b>	<b>829</b>	<b>820</b>	<b>-1.1%</b>	<b>-2.6%</b>

\* Numbers in red represent small programs (undergraduate<50, graduate<30)



## Enrollment by Department and Program Nathan Weiss Graduate College

	FALL 2005	FALL 2006	FALL 2007	FALL 2008	FALL 2009	1-YEAR CHANGE	5-YEAR CHANGE
<b>ENROLLMENT</b>							
<b>Doctoral Stu Psyc</b>							
PsyD.School & Clinical Psych (GR_D)	0	0	0	0	10		
<b>Doctoral Stu Psyc Total:</b>	<b>0</b>	<b>0</b>	<b>0</b>	<b>0</b>	<b>10</b>		
<b>Edu Leadership</b>							
EdD.Urban/Leader (GR_D)	0	0	0	19	33	73.7%	
Edu Admin. (GR)	253	260	249	288	269	-6.6%	6.3%
<b>Edu Leadership Total:</b>	<b>253</b>	<b>260</b>	<b>249</b>	<b>307</b>	<b>302</b>	<b>-1.6%</b>	<b>19.4%</b>
<b>Grad Mgmt Studies</b>							
MBA in Global Management (GR)	20	42	96	103	112	8.7%	460.0%
MIS (GR)	34	34	23	11	6	-45.5%	-82.4%
<b>Grad Mgmt Studies Total:</b>	<b>54</b>	<b>76</b>	<b>119</b>	<b>114</b>	<b>118</b>	<b>3.5%</b>	<b>118.5%</b>
<b>NWGC Other</b>							
Holocaust & Genocide (GR)	0	5	14	18	20	11.1%	
<b>NWGC Other Total:</b>	<b>0</b>	<b>5</b>	<b>14</b>	<b>18</b>	<b>20</b>	<b>11.1%</b>	
<b>Occupational Therapy - GR</b>							
Occupational Therapy (GR)	46	61	72	79	77	-2.5%	67.4%
<b>Occupational Therapy - GR Total:</b>	<b>46</b>	<b>61</b>	<b>72</b>	<b>79</b>	<b>77</b>	<b>-2.5%</b>	<b>67.4%</b>
<b>Sci &amp; Tech Edu</b>							
Biotechnology (GR)	21	21	21	24	26	8.3%	23.8%
Science & Tech. (UG)	16	68	62	105	106	1.0%	562.5%
Science & Tech. (GR)	0	0	0	4	5	25.0%	
<b>Sci &amp; Tech Edu Total:</b>	<b>37</b>	<b>89</b>	<b>83</b>	<b>133</b>	<b>137</b>	<b>3.0%</b>	<b>270.3%</b>
<b>Social Work - Graduate</b>							
Social Work (GR)	94	88	83	81	113	39.5%	20.2%
<b>Social Work - Graduate Total:</b>	<b>94</b>	<b>88</b>	<b>83</b>	<b>81</b>	<b>113</b>	<b>39.5%</b>	<b>20.2%</b>
<i>NWGC UG Total:</i>	<i>16</i>	<i>68</i>	<i>62</i>	<i>105</i>	<i>106</i>	<i>1.0%</i>	<i>562.5%</i>
<i>NWGC GR_D Total:</i>	<i>0</i>	<i>0</i>	<i>0</i>	<i>19</i>	<i>43</i>	<i>126.3%</i>	
<i>NWGC GR Total:</i>	<i>468</i>	<i>511</i>	<i>558</i>	<i>608</i>	<i>628</i>	<i>3.3%</i>	<i>34.2%</i>
<b>NWGC Total:</b>	<b>484</b>	<b>579</b>	<b>620</b>	<b>732</b>	<b>777</b>	<b>6.1%</b>	<b>60.5%</b>

\* Numbers in red represent small programs (undergraduate<50, graduate<30)

## Second Majors by Program

	FALL 2005	FALL 2006	FALL 2007	FALL 2008	FALL 2009	1-YEAR CHANGE	5-YEAR CHANGE
<b>ENROLLMENT</b>							
English	152	140	141	191	271	41.9%	78.3%
History	73	73	73	95	163	71.6%	123.3%
Psychology	167	183	171	143	145	1.4%	-13.2%
Earth Science	34	40	40	56	65	16.1%	91.2%
Spanish	53	41	36	41	57	39.0%	7.5%
Liberal Studies in Math	10	15	26	35	42	20.0%	320.0%
Math. Science	21	29	20	34	41	20.6%	95.2%
Sociology	34	43	34	29	28	-3.4%	-17.6%
Fine Arts	16	13	19	16	25	56.3%	56.3%
Biology	8	5	8	12	23	91.7%	187.5%
Economics	9	10	11	11	17	54.5%	88.9%
Liberal Studies in EarthSci	2	6	7	12	13	8.3%	550.0%
Communication	13	11	11	11	12	9.1%	-7.7%
Political Science	10	9	6	7	7	0.0%	-30.0%
Criminal Justice	2	3	3	1	6	500.0%	200.0%
Finance	5	3	4	8	4	-50.0%	-20.0%
Public Admin.	2	0	2	1	4	300.0%	100.0%
Liberal Studies in Bio	3	5	6	7	3	-57.1%	0.0%
Media Film	0	1	0	4	3	-25.0%	
Philosophy and Religion	4	1	2	4	3	-25.0%	-25.0%
Music	2	0	1	0	3		50.0%
Management Sci.	5	3	2	2	2	0.0%	-60.0%
Art History	3	2	5	1	2	100.0%	-33.3%
Computer Science	3	2	2	1	1	0.0%	-66.7%
Chemistry	2	1	0	1	1	0.0%	-50.0%
Electronics Tech.	0	0	0	0	1		
Marketing	1	3	2	0	1		0.0%
Recreation Admin.	0	0	0	0	1		
Studio Art	0	0	0	0	1		
Physical Edu	0	1	1	1	0		
Liberal Studies in Tech	5	6	1	1	0		
Graphic Comm	0	0	0	1	0		
Educator of Indivs with Disabilities	0	0	2	1	0		
Theatre	6	2	3	1	0		
Communication - Broadcast	2	0	0	0	0		
HIM	0	0	1	0	0		
Industrial Design	1	0	0	0	0		
Interior Design	0	1	0	0	0		
Medical Tech.	0	0	1	0	0		
Telecomm.Info.Tech.	0	0	1	0	0		
Second Majors Total	648	652	642	728	945	29.8%	45.8%

## Course FTE by Department and Academic Level College of Business and Public Administration

	FALL 2005	FALL 2006	FALL 2007	FALL 2008	FALL 2009	1-YEAR CHANGE	5-YEAR CHANGE
<b>COURSE FTE</b>							
<b>Accounting</b>							
UG	160.9	148.7	196.7	202.7	228.0	12.5%	41.7%
GR	54.8	55.3	47.3	44.5	49.0	10.1%	-10.5%
<b>Accounting Total:</b>	<b>215.6</b>	<b>203.9</b>	<b>243.9</b>	<b>247.2</b>	<b>277.0</b>	<b>12.1%</b>	<b>28.5%</b>
<b>Criminal Justice</b>							
UG	164.7	168.6	165.3	201.9	232.8	15.3%	41.4%
GR		4.5	8.3	3.8	1.8	-53.3%	
<b>Criminal Justice Total:</b>	<b>164.7</b>	<b>173.1</b>	<b>173.6</b>	<b>205.7</b>	<b>234.6</b>	<b>14.0%</b>	<b>42.4%</b>
<b>Economics/Finance</b>							
UG	274.3	246.8	272.6	327.6	362.6	10.7%	32.2%
GR	8.0	4.8	6.8	6.0	7.3	20.8%	-9.4%
<b>Economics/Finance Total:</b>	<b>282.3</b>	<b>251.5</b>	<b>279.4</b>	<b>333.6</b>	<b>369.9</b>	<b>10.9%</b>	<b>31.0%</b>
<b>Management</b>							
UG	321.9	272.1	342.9	388.5	381.4	-1.8%	18.5%
GR	9.3	10.3	14.8	15.5	18.0	16.1%	94.6%
<b>Management Total:</b>	<b>331.2</b>	<b>282.3</b>	<b>357.7</b>	<b>404.0</b>	<b>399.4</b>	<b>-1.1%</b>	<b>20.6%</b>
<b>Marketing</b>							
UG	97.1	97.3	108.8	140.4	136.5	-2.8%	40.5%
GR	4.0	6.5	10.5	4.8	6.0	26.3%	50.0%
<b>Marketing Total:</b>	<b>101.1</b>	<b>103.8</b>	<b>119.3</b>	<b>145.2</b>	<b>142.5</b>	<b>-1.9%</b>	<b>40.9%</b>
<b>Public Adm</b>							
UG	80.1	79.1	81.9	90.3	93.4	3.5%	16.6%
GR	116.5	116.3	87.3	84.0	87.0	3.6%	-25.3%
<b>Public Adm Total:</b>	<b>196.6</b>	<b>195.4</b>	<b>169.2</b>	<b>174.3</b>	<b>180.4</b>	<b>3.5%</b>	<b>-8.2%</b>
<i>BPA UG Total:</i>	<i>1,099.0</i>	<i>1,012.6</i>	<i>1,168.3</i>	<i>1,351.4</i>	<i>1,434.7</i>	<i>6.2%</i>	<i>30.5%</i>
<i>BPA GR Total:</i>	<i>192.5</i>	<i>197.5</i>	<i>174.8</i>	<i>158.5</i>	<i>169.0</i>	<i>6.6%</i>	<i>-12.2%</i>
<b>BPA Total:</b>	<b>1,291.5</b>	<b>1,210.1</b>	<b>1,343.0</b>	<b>1,509.9</b>	<b>1,603.7</b>	<b>6.2%</b>	<b>24.2%</b>

## Course FTE by Department and Academic Level College of Education

	FALL 2005	FALL 2006	FALL 2007	FALL 2008	FALL 2009	1-YEAR CHANGE	5-YEAR CHANGE
<b>COURSE FTE</b>							
<b>Comm Disorder/Deaf</b>							
UG	67.7	60.9	60.9	74.8	97.8	30.7%	44.5%
GR	85.1	94.5	114.3	109.3	112.6	3.1%	32.3%
<b>Comm Disorder/Deaf Total:</b>	<b>152.8</b>	<b>155.4</b>	<b>175.2</b>	<b>184.1</b>	<b>210.4</b>	<b>14.3%</b>	<b>37.7%</b>
<b>Comm Sci/Edu Svcs</b>							
UG	106.1	99.8	121.3	116.8	110.1	-5.8%	3.7%
GR	55.1	57.0	45.8	39.3	36.5	-7.0%	-33.7%
<b>Comm Sci/Edu Svcs Total:</b>	<b>161.2</b>	<b>156.8</b>	<b>167.1</b>	<b>156.1</b>	<b>146.6</b>	<b>-6.1%</b>	<b>-9.1%</b>
<b>Counselor Edu</b>							
GR	105.0	104.3	109.8	111.5	122.5	9.9%	16.7%
<b>Counselor Edu Total:</b>	<b>105.0</b>	<b>104.3</b>	<b>109.8</b>	<b>111.5</b>	<b>122.5</b>	<b>9.9%</b>	<b>16.7%</b>
<b>Early Childhd/Family</b>							
UG	140.1	157.3	171.1	182.1	170.8	-6.2%	21.9%
GR	65.3	42.0	29.0	26.8	22.8	-14.6%	-65.1%
<b>Early Childhd/Family Total:</b>	<b>205.4</b>	<b>199.3</b>	<b>200.1</b>	<b>208.9</b>	<b>193.6</b>	<b>-7.3%</b>	<b>-5.8%</b>
<b>EDU Other</b>							
UG	116.1	105.6	102.2	112.9	116.1	2.8%	0.0%
<b>EDU Other Total:</b>	<b>116.1</b>	<b>105.6</b>	<b>102.2</b>	<b>112.9</b>	<b>116.1</b>	<b>2.8%</b>	<b>0.0%</b>
<b>Global Edu Innovation</b>							
UG	189.9	171.4	177.8	178.9	155.8	-12.9%	-18.0%
GR	1.5	2.3	1.3	1.5			
<b>Global Edu Innovation Total:</b>	<b>191.4</b>	<b>173.6</b>	<b>179.0</b>	<b>180.4</b>	<b>155.8</b>	<b>-13.6%</b>	<b>-18.6%</b>
<b>Mid Sec Ed</b>							
UG		184.1	205.7	208.8	264.8	26.8%	
GR		135.0	121.5	132.3	141.0	6.6%	
<b>Mid Sec Ed Total:</b>		<b>319.1</b>	<b>327.2</b>	<b>341.1</b>	<b>405.8</b>	<b>19.0%</b>	
<b>Phys Ed/Rec/Health</b>							
UG	545.0	585.1	620.1	661.9	754.3	14.0%	38.4%
GR	10.8	9.5	12.0	11.0	13.0	18.2%	20.9%
<b>Phys Ed/Rec/Health Total:</b>	<b>555.8</b>	<b>594.6</b>	<b>632.1</b>	<b>672.9</b>	<b>767.3</b>	<b>14.0%</b>	<b>38.1%</b>
<b>Special Edu</b>							
UG	124.1	102.5	111.6	124.4	166.2	33.6%	33.9%
GR	129.5	130.8	141.5	155.8	160.0	2.7%	23.6%
<b>Special Edu Total:</b>	<b>253.6</b>	<b>233.3</b>	<b>253.1</b>	<b>280.2</b>	<b>326.2</b>	<b>16.4%</b>	<b>28.6%</b>
<b>EDU UG Total:</b>	<b>1,289.0</b>	<b>1,466.6</b>	<b>1,570.6</b>	<b>1,660.6</b>	<b>1,835.8</b>	<b>10.5%</b>	<b>42.4%</b>
<b>EDU GR Total:</b>	<b>452.3</b>	<b>575.3</b>	<b>575.0</b>	<b>587.3</b>	<b>608.5</b>	<b>3.6%</b>	<b>34.5%</b>
<b>EDU Total:</b>	<b>1,741.3</b>	<b>2,041.8</b>	<b>2,145.6</b>	<b>2,247.9</b>	<b>2,444.3</b>	<b>8.7%</b>	<b>40.4%</b>



# Course FTE by Department and Academic Level

## College of Humanities and Social Sciences

	FALL 2005	FALL 2006	FALL 2007	FALL 2008	FALL 2009	1-YEAR CHANGE	5-YEAR CHANGE
<b>COURSE FTE</b>							
<b>Communication</b>							
UG	359.3	383.9	381.1	410.7	448.8	9.3%	24.9%
GR	11.0	14.8	17.8	15.0	9.5	-36.7%	-13.6%
<b>Communication Total:</b>	<b>370.3</b>	<b>398.7</b>	<b>398.8</b>	<b>425.7</b>	<b>458.3</b>	<b>7.7%</b>	<b>23.8%</b>
<b>English</b>							
UG	837.8	820.9	868.9	950.2	1,056.0	11.1%	26.0%
GR	12.0	17.5	9.7	14.4	13.7	-5.2%	13.9%
<b>English Total:</b>	<b>849.8</b>	<b>838.4</b>	<b>878.6</b>	<b>964.6</b>	<b>1,069.7</b>	<b>10.9%</b>	<b>25.9%</b>
<b>History</b>							
UG	422.3	392.1	411.6	442.1	512.6	15.9%	21.4%
GR	4.3		1.0				
<b>History Total:</b>	<b>426.5</b>	<b>392.1</b>	<b>412.6</b>	<b>442.1</b>	<b>512.6</b>	<b>15.9%</b>	<b>20.2%</b>
<b>Philosophy/Religion</b>							
UG	167.6	164.6	130.9	143.4	154.7	7.8%	-7.7%
<b>Philosophy/Religion Total:</b>	<b>167.6</b>	<b>164.6</b>	<b>130.9</b>	<b>143.4</b>	<b>154.7</b>	<b>7.8%</b>	<b>-7.7%</b>
<b>Political Science</b>							
UG	124.7	140.4	145.5	163.7	152.1	-7.1%	22.0%
GR	4.5	10.8	14.0	9.0	5.0	-44.4%	11.1%
<b>Political Science Total:</b>	<b>129.2</b>	<b>151.2</b>	<b>159.5</b>	<b>172.7</b>	<b>157.1</b>	<b>-9.0%</b>	<b>21.6%</b>
<b>Psychology</b>							
UG	579.3	623.8	643.3	668.5	782.1	17.0%	35.0%
GR	94.5	94.5	86.8	79.8	77.4	-2.9%	-18.1%
<b>Psychology Total:</b>	<b>673.8</b>	<b>718.3</b>	<b>730.0</b>	<b>748.3</b>	<b>859.5</b>	<b>14.9%</b>	<b>27.6%</b>
<b>Social Work</b>							
UG	56.8	57.2	73.9	88.6	79.1	-10.7%	39.3%
<b>Social Work Total:</b>	<b>56.8</b>	<b>57.2</b>	<b>73.9</b>	<b>88.6</b>	<b>79.1</b>	<b>-10.7%</b>	<b>39.3%</b>
<b>Sociology/Anthropology</b>							
UG	347.6	354.9	377.3	376.1	418.1	11.2%	20.3%
GR				9.3	14.3	54.1%	
<b>Sociology/Anthropology Total:</b>	<b>347.6</b>	<b>354.9</b>	<b>377.3</b>	<b>385.4</b>	<b>432.4</b>	<b>12.2%</b>	<b>24.4%</b>
<i>HSS UG Total:</i>	<i>2,895.3</i>	<i>2,937.9</i>	<i>3,032.3</i>	<i>3,243.3</i>	<i>3,603.4</i>	<i>11.1%</i>	<i>24.5%</i>
<i>HSS GR Total:</i>	<i>126.3</i>	<i>137.5</i>	<i>129.2</i>	<i>127.4</i>	<i>119.8</i>	<i>-6.0%</i>	<i>-5.1%</i>
<b>HSS Total:</b>	<b>3,021.6</b>	<b>3,075.4</b>	<b>3,161.5</b>	<b>3,370.7</b>	<b>3,723.2</b>	<b>10.5%</b>	<b>23.2%</b>

# Course FTE by Department and Academic Level

## College of Natural, Applied, and Health Sciences

	FALL 2005	FALL 2006	FALL 2007	FALL 2008	FALL 2009	1-YEAR CHANGE	5-YEAR CHANGE
<b>COURSE FTE</b>							
<b>Biological Sciences</b>							
UG	298.8	320.6	341.1	359.7	415.6	15.6%	39.1%
<b>Biological Sciences Total:</b>	<b>298.8</b>	<b>320.6</b>	<b>341.1</b>	<b>359.7</b>	<b>415.6</b>	<b>15.6%</b>	<b>39.1%</b>
<b>Chemistry/Physics</b>							
UG	145.3	155.8	160.4	183.9	192.2	4.5%	32.3%
GR	0.3	0.5		0.8			
<b>Chemistry/Physics Total:</b>	<b>145.6</b>	<b>156.3</b>	<b>160.4</b>	<b>184.7</b>	<b>192.2</b>	<b>4.1%</b>	<b>32.0%</b>
<b>Computer Science</b>							
UG	243.2	228.8	232.2	243.3	270.8	11.3%	11.3%
GR	5.0	2.8	1.8	1.0	2.5	150.0%	-50.0%
<b>Computer Science Total:</b>	<b>248.2</b>	<b>231.6</b>	<b>233.9</b>	<b>244.3</b>	<b>273.3</b>	<b>11.9%</b>	<b>10.1%</b>
<b>Geology/Meteorology</b>							
UG	157.1	166.0	165.3	173.3	192.5	11.1%	22.5%
<b>Geology/Meteorology Total:</b>	<b>157.1</b>	<b>166.0</b>	<b>165.3</b>	<b>173.3</b>	<b>192.5</b>	<b>11.1%</b>	<b>22.5%</b>
<b>Health Info Mgmt</b>							
UG	30.8	34.8	17.8				
<b>Health Info Mgmt Total:</b>	<b>30.8</b>	<b>34.8</b>	<b>17.8</b>				
<b>Mathematics</b>							
UG	611.6	623.9	652.8	683.4	635.8	-7.0%	4.0%
GR	18.0	13.0	11.5	11.5	16.5	43.5%	-8.3%
<b>Mathematics Total:</b>	<b>629.6</b>	<b>636.9</b>	<b>664.3</b>	<b>694.9</b>	<b>652.3</b>	<b>-6.1%</b>	<b>3.6%</b>
<b>Nursing</b>							
UG	44.9	71.8	70.4	84.4	85.1	0.9%	89.4%
GR	36.8	35.9	32.7	42.7	44.2	3.7%	20.1%
<b>Nursing Total:</b>	<b>81.8</b>	<b>107.7</b>	<b>103.0</b>	<b>127.0</b>	<b>129.4</b>	<b>1.8%</b>	<b>58.2%</b>
<b>Occupational Therapy</b>							
UG	2.4	1.4	1.1	6.2			
GR	48.4	64.8	67.3	69.3			
<b>Occupational Therapy Total:</b>	<b>50.9</b>	<b>66.2</b>	<b>68.5</b>	<b>75.4</b>			
<i>NAHS UG Total:</i>	<i>1,534.1</i>	<i>1,603.2</i>	<i>1,641.1</i>	<i>1,734.1</i>	<i>1,791.9</i>	<i>3.3%</i>	<i>16.8%</i>
<i>NAHS GR Total:</i>	<i>108.5</i>	<i>116.9</i>	<i>113.3</i>	<i>125.2</i>	<i>63.3</i>	<i>-49.5%</i>	<i>-41.7%</i>
<b>NAHS Total:</b>	<b>1,642.6</b>	<b>1,720.1</b>	<b>1,754.3</b>	<b>1,859.3</b>	<b>1,855.2</b>	<b>-0.2%</b>	<b>12.9%</b>

# Course FTE by Department and Academic Level School of Visual and Performing Arts

	FALL 2005	FALL 2006	FALL 2007	FALL 2008	FALL 2009	1-YEAR CHANGE	5-YEAR CHANGE
<b>COURSE FTE</b>							
<b>Design</b>							
UG	188.4	183.6	175.9	190.5	189.4	-0.6%	0.5%
GR	11.3	17.5	13.3	9.0	9.5	5.6%	-15.6%
<b>Design Total:</b>	<b>199.7</b>	<b>201.1</b>	<b>189.1</b>	<b>199.5</b>	<b>198.9</b>	<b>-0.3%</b>	<b>-0.4%</b>
<b>Fine Arts</b>							
UG	335.5	351.3	348.3	360.1	356.0	-1.1%	6.1%
GR	23.8	25.3	26.9	23.3	21.7	-6.8%	-8.4%
<b>Fine Arts Total:</b>	<b>359.3</b>	<b>376.6</b>	<b>375.2</b>	<b>383.4</b>	<b>377.7</b>	<b>-1.5%</b>	<b>5.1%</b>
<b>Music</b>							
UG	170.9	160.2	155.3	163.1	160.3	-1.7%	-6.2%
GR			1.3				
<b>Music Total:</b>	<b>170.9</b>	<b>160.2</b>	<b>156.5</b>	<b>163.1</b>	<b>160.3</b>	<b>-1.7%</b>	<b>-6.2%</b>
<b>Theatre</b>							
UG	72.4	67.2	72.2	66.4	80.3	20.8%	10.8%
<b>Theatre Total:</b>	<b>72.4</b>	<b>67.2</b>	<b>72.2</b>	<b>66.4</b>	<b>80.3</b>	<b>20.8%</b>	<b>10.8%</b>
<b>VPA Other</b>							
GR	4.3	5.8	3.5	4.5	3.0	-33.3%	-29.4%
<b>VPA Other Total:</b>	<b>4.3</b>	<b>5.8</b>	<b>3.5</b>	<b>4.5</b>	<b>3.0</b>	<b>-33.3%</b>	<b>-29.4%</b>
<i>VPA UG Total:</i>	<i>767.3</i>	<i>762.3</i>	<i>751.6</i>	<i>780.1</i>	<i>786.0</i>	<i>0.8%</i>	<i>2.4%</i>
<i>VPA GR Total:</i>	<i>39.3</i>	<i>48.6</i>	<i>44.9</i>	<i>36.8</i>	<i>34.2</i>	<i>-7.0%</i>	<i>-12.7%</i>
<b>VPA Total:</b>	<b>806.6</b>	<b>810.9</b>	<b>796.5</b>	<b>817.0</b>	<b>820.2</b>	<b>0.4%</b>	<b>1.7%</b>

## Course FTE by Department and Academic Level Nathan Weiss Graduate College

	FALL 2005	FALL 2006	FALL 2007	FALL 2008	FALL 2009	1-YEAR CHANGE	5-YEAR CHANGE
<b>COURSE FTE</b>							
<b>Doctoral Stu Psyc</b>							
GR					11.7		
<b>Doctoral Stu Psyc Total:</b>					<b>11.7</b>		
<b>Edu Leadership</b>							
UG	195.4						
GR	310.8	170.5	169.3	173.5	155.3	-10.5%	-50.0%
<b>Edu Leadership Total:</b>	<b>506.2</b>	<b>170.5</b>	<b>169.3</b>	<b>173.5</b>	<b>155.3</b>	<b>-10.5%</b>	<b>-69.3%</b>
<b>Grad Mgmt Studies</b>							
GR	22.5	35.0	39.0	50.3	47.0	-6.5%	108.9%
<b>Grad Mgmt Studies Total:</b>	<b>22.5</b>	<b>35.0</b>	<b>39.0</b>	<b>50.3</b>	<b>47.0</b>	<b>-6.5%</b>	<b>108.9%</b>
<b>NWGC Other</b>							
UG			9.2	11.6	14.8	27.4%	
GR	2.8	6.3	8.8	9.5	8.8	-7.9%	218.2%
<b>NWGC Other Total:</b>	<b>2.8</b>	<b>6.3</b>	<b>17.9</b>	<b>21.1</b>	<b>23.6</b>	<b>11.5%</b>	<b>756.8%</b>
<b>Occupational Therapy - GR</b>							
UG					10.6		
GR					69.3		
<b>Occupational Therapy - GR Total:</b>					<b>79.8</b>		
<b>Sci &amp; Tech Edu</b>							
UG	22.1	30.8	31.8	28.0	26.9	-4.0%	21.8%
GR	30.9	28.7	31.5	36.6	45.1	23.2%	45.8%
<b>Sci &amp; Tech Edu Total:</b>	<b>53.0</b>	<b>59.5</b>	<b>63.3</b>	<b>64.6</b>	<b>72.0</b>	<b>11.4%</b>	<b>35.8%</b>
<b>Social Work - Graduate</b>							
GR	114.5	109.0	103.3	97.9	130.8	33.5%	14.2%
<b>Social Work - Graduate Total:</b>	<b>114.5</b>	<b>109.0</b>	<b>103.3</b>	<b>97.9</b>	<b>130.8</b>	<b>33.5%</b>	<b>14.2%</b>
<i>NWGC UG Total:</i>	<i>217.5</i>	<i>30.8</i>	<i>41.0</i>	<i>39.6</i>	<i>52.3</i>	<i>31.9%</i>	<i>-76.0%</i>
<i>NWGC GR Total:</i>	<i>481.4</i>	<i>349.4</i>	<i>351.8</i>	<i>367.8</i>	<i>467.8</i>	<i>27.2%</i>	<i>-2.8%</i>
<b>NWGC Total:</b>	<b>698.9</b>	<b>380.2</b>	<b>392.8</b>	<b>407.4</b>	<b>520.0</b>	<b>27.6%</b>	<b>-25.6%</b>

## Course FTE by Department and Academic Level Other Courses

	FALL 2005	FALL 2006	FALL 2007	FALL 2008	FALL 2009	1-YEAR CHANGE	5-YEAR CHANGE
<b>COURSE FTE</b>							
<b>Other</b>							
UG	204.9	202.8	210.6	202.4	208.3	2.9%	1.6%
<b>Other Total:</b>	<b>204.9</b>	<b>202.8</b>	<b>210.6</b>	<b>202.4</b>	<b>208.3</b>	<b>2.9%</b>	<b>1.6%</b>
<i>Other UG Total:</i>	<i>204.9</i>	<i>202.8</i>	<i>210.6</i>	<i>202.4</i>	<i>208.3</i>	<i>2.9%</i>	<i>1.6%</i>
<b>Other Total:</b>	<b>204.9</b>	<b>202.8</b>	<b>210.6</b>	<b>202.4</b>	<b>208.3</b>	<b>2.9%</b>	<b>1.6%</b>





# Kean University - Degree Conferred



## *Degrees Conferred*

Page 24	At-a-Glance
Page 26	Degrees Conferred by Department and Program College of Business and Public Administration
Page 27	Degrees Conferred by Department and Program College of Education
Page 28	Degrees Conferred by Department and Program College of Humanities and Social Sciences
Page 29	Degrees Conferred by Department and Program College of Natural, Applied, and Health Sciences
Page 30	Degrees Conferred by Department and Program School of Visual and Performing Arts
Page 31	Degrees Conferred by Department and Program Nathan Weiss Graduate College

## Degrees Conferred, Fiscal Year 2008 - 2009

	TOTAL		BACHELOR'S		MASTER'S	
	No.	%	No.	%	No.	%
<b>DEGREE LEVEL</b>						
Bachelor's	2,082	74.5%	2,082	100.0%		
Master's	712	25.5%			712	100.0%
<b>GENDER</b>						
Male	834	29.8%	673	32.3%	161	22.6%
Female	1,960	70.2%	1,409	67.7%	551	77.4%
<b>RACE / ETHNICITY</b>						
Black	490	17.5%	361	17.3%	129	18.1%
Hispanic	470	16.8%	387	18.6%	83	11.7%
Asian	191	6.8%	159	7.6%	32	4.5%
White	1,504	53.8%	1,057	50.8%	447	62.8%
Not Reported	139	5.0%	118	5.7%	21	2.9%
<b>COLLEGE</b>						
BPA	735	26.3%	650	31.2%	85	11.9%
EDU	723	25.9%	455	21.9%	268	37.6%
HSS	659	23.6%	596	28.6%	63	8.8%
NAHS	276	9.9%	244	11.7%	32	4.5%
NWGC	246	8.8%	17	0.8%	229	32.2%
VPA	155	5.5%	120	5.8%	35	4.9%

\* Fiscal Year includes degrees conferred between July 1 and June 30.

### Top 10 Bachelor's Degrees Conferred

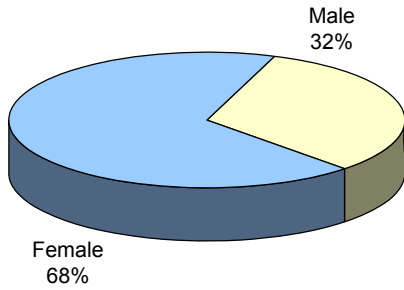
Psychology	206
Management Science	200
Criminal Justice	133
Accounting	129
Early Childhood Edu.	107
Elementary, Middle and Secondary Education	90
English	86
Marketing	84
History	79
Biology	74

### Top 10 Master's Degrees Conferred

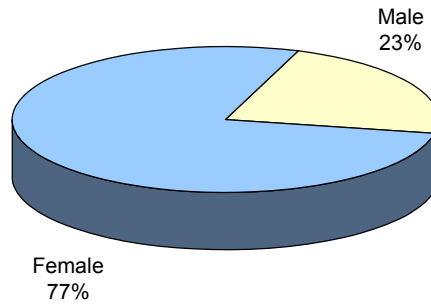
Educational Administration	89
Counselor Education	56
Public Administration	53
Global MBA	52
Special Education	50
Social Work	42
Speech Language Pathology	42
Instruction & Curriculum - MSE	38
Accounting	32
Occupational Therapy	29

Additional information is available online at <http://ir.kean.edu>.

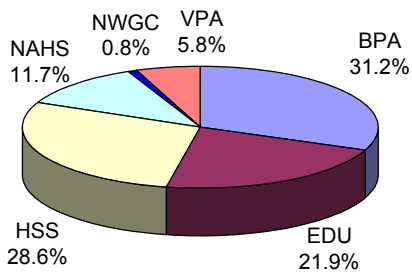
**BACHELOR'S DEGREES  
By Gender**



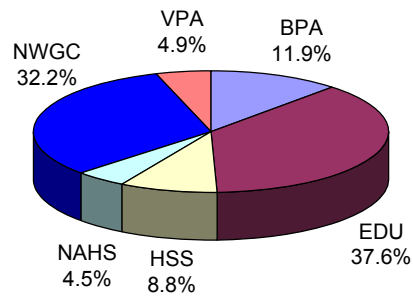
**MASTER'S DEGREES  
By Gender**



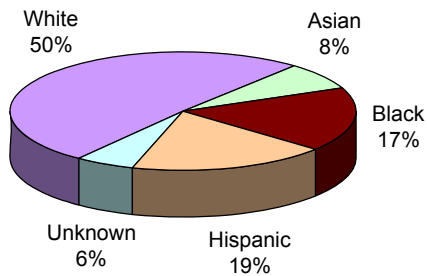
**BACHELOR'S DEGREES  
By College**



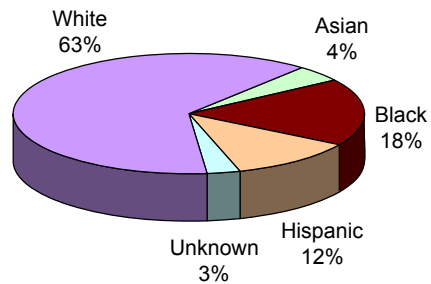
**MASTER'S DEGREES  
By College**



**BACHELOR'S DEGREES  
By Race/Ethnicity**



**MASTER'S DEGREES  
By Race/Ethnicity**



## Degrees Conferred by Department and Program College of Business and Public Administration

	FISCAL Yr 2004-05	FISCAL Yr 2005-06	FISCAL Yr 2006-07	FISCAL Yr 2007-08	FISCAL Yr 2008-09	1-YEAR CHANGE	5-YEAR CHANGE
<b>DEGREES CONFERRED</b>							
<b>Accounting</b>							
Accounting (UG)	111	114	103	92	129	40.2%	16.2%
Accounting (GR)	37	50	48	40	32	-20.0%	-13.5%
<b>Accounting Total:</b>	<b>148</b>	<b>164</b>	<b>151</b>	<b>132</b>	<b>161</b>	<b>22.0%</b>	<b>8.8%</b>
<b>Criminal Justice</b>							
Criminal Justice (UG)	70	81	75	81	133	64.2%	90.0%
<b>Criminal Justice Total:</b>	<b>70</b>	<b>81</b>	<b>75</b>	<b>81</b>	<b>133</b>	<b>64.2%</b>	<b>90.0%</b>
<b>Economics/Finance</b>							
Economics (UG)	18	16	21	13	21	61.5%	16.7%
Finance (UG)	61	64	42	48	53	10.4%	-13.1%
<b>Economics/Finance Total:</b>	<b>79</b>	<b>80</b>	<b>63</b>	<b>61</b>	<b>74</b>	<b>21.3%</b>	<b>-6.3%</b>
<b>Management</b>							
Management Sci. (UG)	188	210	187	194	200	3.1%	6.4%
<b>Management Total:</b>	<b>188</b>	<b>210</b>	<b>187</b>	<b>194</b>	<b>200</b>	<b>3.1%</b>	<b>6.4%</b>
<b>Marketing</b>							
Marketing (UG)	78	56	73	70	84	20.0%	7.7%
<b>Marketing Total:</b>	<b>78</b>	<b>56</b>	<b>73</b>	<b>70</b>	<b>84</b>	<b>20.0%</b>	<b>7.7%</b>
<b>Public Adm</b>							
Public Admin. (UG)	26	28	39	21	30	42.9%	15.4%
Public Admin. (GR)	51	59	53	46	53	15.2%	3.9%
<b>Public Adm Total:</b>	<b>77</b>	<b>87</b>	<b>92</b>	<b>67</b>	<b>83</b>	<b>23.9%</b>	<b>7.8%</b>
<i>BPA UG Total:</i>	<i>552</i>	<i>569</i>	<i>540</i>	<i>519</i>	<i>650</i>	<i>25.2%</i>	<i>17.8%</i>
<i>BPA GR Total:</i>	<i>88</i>	<i>109</i>	<i>101</i>	<i>86</i>	<i>85</i>	<i>-1.2%</i>	<i>-3.4%</i>
<b>BPA Total:</b>	<b>640</b>	<b>678</b>	<b>641</b>	<b>605</b>	<b>735</b>	<b>21.5%</b>	<b>14.8%</b>

## Degrees Conferred by Department and Program College of Education

Degrees Conferred

	FISCAL YR 2004-05	FISCAL YR 2005-06	FISCAL YR 2006-07	FISCAL YR 2007-08	FISCAL YR 2008-09	1-YEAR CHANGE	5-YEAR CHANGE
<b>DEGREES CONFERRED</b>							
<b>Comm Disorder/Deaf</b>							
Speech Lang. Pathology (GR)	50	30	37	29	42	44.8%	-16.0%
Speech, Lang Hear. Sci. (UG)	36	26	34	37	33	-10.8%	-8.3%
<b>Comm Disorder/Deaf Total:</b>	<b>86</b>	<b>56</b>	<b>71</b>	<b>66</b>	<b>75</b>	<b>13.6%</b>	<b>-12.8%</b>
<b>Counselor Edu</b>							
Counselor Edu (GR)	32	44	41	46	56	21.7%	75.0%
<b>Counselor Edu Total:</b>	<b>32</b>	<b>44</b>	<b>41</b>	<b>46</b>	<b>56</b>	<b>21.7%</b>	<b>75.0%</b>
<b>Early Childhd/Family</b>							
Early Childhood Edu. (UG)	109	99	99	101	107	5.9%	-1.8%
Early Childhood Edu. (GR)	33	27	19	19	25	31.6%	-24.2%
<b>Early Childhd/Family Total:</b>	<b>142</b>	<b>126</b>	<b>118</b>	<b>120</b>	<b>132</b>	<b>10.0%</b>	<b>-7.0%</b>
<b>Elem Ed/Bil Ed</b>							
Elementary Edu (UG)	0	0	0	23	16	-30.4%	
Instruction & Curriculum (GR)	11	15	11	17	20	17.6%	81.8%
<b>Elem Ed/Bil Ed Total:</b>	<b>11</b>	<b>15</b>	<b>11</b>	<b>40</b>	<b>36</b>	<b>-10.0%</b>	<b>227.3%</b>
<b>Global Edu Innovation</b>							
Spanish (UG)	39	50	41	70	52	-25.7%	33.3%
<b>Global Edu Innovation Total:</b>	<b>39</b>	<b>50</b>	<b>41</b>	<b>70</b>	<b>52</b>	<b>-25.7%</b>	<b>33.3%</b>
<b>Mid Sec Ed</b>							
Elem/Mid/Sec Edu (UG)	123	109	139	83	90	8.4%	-26.8%
Instruction & Curriculum - MSE (GR)	62	58	50	53	38	-28.3%	-38.7%
<b>Mid Sec Ed Total:</b>	<b>185</b>	<b>167</b>	<b>189</b>	<b>136</b>	<b>128</b>	<b>-5.9%</b>	<b>-30.8%</b>
<b>Phys Ed/Rec/Health</b>							
Athletic Training (UG)	0	0	3	5	7	40.0%	
Exercise Science (GR)	5	6	2	3	1	-66.7%	-80.0%
Physical Edu (UG)	54	60	57	60	73	21.7%	35.2%
Recreation Admin. (UG)	24	14	23	18	27	50.0%	12.5%
<b>Phys Ed/Rec/Health Total:</b>	<b>83</b>	<b>80</b>	<b>85</b>	<b>86</b>	<b>108</b>	<b>25.6%</b>	<b>30.1%</b>
<b>Special Edu</b>							
Educator of Indivs with Disabilities (UG)	61	57	54	37	50	35.1%	-18.0%
Special Edu (GR)	41	50	61	48	50	4.2%	22.0%
<b>Special Edu Total:</b>	<b>102</b>	<b>107</b>	<b>115</b>	<b>85</b>	<b>100</b>	<b>17.6%</b>	<b>-2.0%</b>
<b>EDU UG Total:</b>	<b>446</b>	<b>415</b>	<b>450</b>	<b>434</b>	<b>455</b>	<b>4.8%</b>	<b>2.0%</b>
<b>EDU GR Total:</b>	<b>250</b>	<b>264</b>	<b>257</b>	<b>257</b>	<b>268</b>	<b>4.3%</b>	<b>7.2%</b>
<b>EDU Total:</b>	<b>696</b>	<b>679</b>	<b>707</b>	<b>691</b>	<b>723</b>	<b>4.6%</b>	<b>3.9%</b>



## Degrees Conferred by Department and Program College of Humanities and Social Sciences

	FISCAL Yr 2004-05	FISCAL Yr 2005-06	FISCAL Yr 2006-07	FISCAL Yr 2007-08	FISCAL Yr 2008-09	1-YEAR CHANGE	5-YEAR CHANGE
<b>DEGREES CONFERRED</b>							
<b>Communication</b>							
Communication (UG)	47	44	42	46	50	8.7%	6.4%
Communication - Broadcast (UG)	37	38	25	2	1	-50.0%	-97.3%
Communication Studies (GR)	6	1	9	5	9	80.0%	50.0%
Media Film (UG)	0	1	8	33	20	-39.4%	
<b>Communication Total:</b>	<b>90</b>	<b>84</b>	<b>84</b>	<b>86</b>	<b>80</b>	<b>-7.0%</b>	<b>-11.1%</b>
<b>English</b>							
English (UG)	45	63	56	74	86	16.2%	91.1%
<b>English Total:</b>	<b>45</b>	<b>63</b>	<b>56</b>	<b>74</b>	<b>86</b>	<b>16.2%</b>	<b>91.1%</b>
<b>History</b>							
History (UG)	56	57	83	89	79	-11.2%	41.1%
<b>History Total:</b>	<b>56</b>	<b>57</b>	<b>83</b>	<b>89</b>	<b>79</b>	<b>-11.2%</b>	<b>41.1%</b>
<b>Political Science</b>							
Political Science (UG)	18	34	31	26	30	15.4%	66.7%
Political Science (GR)	1	3	3	7	8	14.3%	700.0%
<b>Political Science Total:</b>	<b>19</b>	<b>37</b>	<b>34</b>	<b>33</b>	<b>38</b>	<b>15.2%</b>	<b>100.0%</b>
<b>Psychology</b>							
Behavioral Sci (GR)	41	25	15	24	16	-33.3%	-61.0%
Edu Psych (GR)	8	22	5	14	11	-21.4%	37.5%
Marri & Fam Therapy (GR)	0	4	4	8	9	12.5%	
Psych Rehab (UG)	7	11	10	7	8	14.3%	14.3%
Psychology (UG)	150	178	200	205	206	0.5%	37.3%
School Psychology (GR)	2	7	12	9	10	11.1%	400.0%
<b>Psychology Total:</b>	<b>208</b>	<b>247</b>	<b>246</b>	<b>267</b>	<b>260</b>	<b>-2.6%</b>	<b>25.0%</b>
<b>Social Work</b>							
Social Work (UG)	44	30	39	31	51	64.5%	15.9%
<b>Social Work Total:</b>	<b>44</b>	<b>30</b>	<b>39</b>	<b>31</b>	<b>51</b>	<b>64.5%</b>	<b>15.9%</b>
<b>Sociology/Anthropology</b>							
Sociology (UG)	45	56	45	44	65	47.7%	44.4%
<b>Sociology/Anthropology Total:</b>	<b>45</b>	<b>56</b>	<b>45</b>	<b>44</b>	<b>65</b>	<b>47.7%</b>	<b>44.4%</b>
<i>HSS UG Total:</i>	<i>453</i>	<i>514</i>	<i>543</i>	<i>558</i>	<i>596</i>	<i>6.8%</i>	<i>31.6%</i>
<i>HSS GR Total:</i>	<i>58</i>	<i>62</i>	<i>48</i>	<i>67</i>	<i>63</i>	<i>-6.0%</i>	<i>8.6%</i>
<b>HSS Total:</b>	<b>511</b>	<b>576</b>	<b>591</b>	<b>625</b>	<b>659</b>	<b>5.4%</b>	<b>29.0%</b>

# Degrees Conferred by Department and Program

## College of Natural, Applied, and Health Sciences

Degrees Conferred

	FISCAL YR 2004-05	FISCAL YR 2005-06	FISCAL YR 2006-07	FISCAL YR 2007-08	FISCAL YR 2008-09	1-YEAR CHANGE	5-YEAR CHANGE
<b>DEGREES CONFERRED</b>							
<b>Biological Sciences</b>							
Biology (UG)	44	67	69	71	74	4.2%	68.2%
Medical Tech. (UG)	5	3	6	4	2	-50.0%	-60.0%
<b>Biological Sciences Total:</b>	<b>49</b>	<b>70</b>	<b>75</b>	<b>75</b>	<b>76</b>	<b>1.3%</b>	<b>55.1%</b>
<b>Chemistry/Physics</b>							
Chemistry (UG)	9	14	12	10	14	40.0%	55.6%
<b>Chemistry/Physics Total:</b>	<b>9</b>	<b>14</b>	<b>12</b>	<b>10</b>	<b>14</b>	<b>40.0%</b>	<b>55.6%</b>
<b>Computer Science</b>							
Comp.Integrated Design & Mfg. Tech. (UG)	0	4	3	1	2	100.0%	
Computer Science (UG)	56	41	29	22	18	-18.2%	-67.9%
Electronics Tech. (UG)	9	3	7	4	1	-75.0%	-88.9%
Tech.Edu. (UG)	0	0	1	0	0		
Telecomm.Info.Tech. (UG)	3	6	12	5	5	0.0%	66.7%
<b>Computer Science Total:</b>	<b>68</b>	<b>54</b>	<b>52</b>	<b>32</b>	<b>26</b>	<b>-18.8%</b>	<b>-61.8%</b>
<b>Geology/Meteorology</b>							
Earth Science (UG)	7	10	18	16	9	-43.8%	28.6%
<b>Geology/Meteorology Total:</b>	<b>7</b>	<b>10</b>	<b>18</b>	<b>16</b>	<b>9</b>	<b>-43.8%</b>	<b>28.6%</b>
<b>Health Info Mgmt</b>							
HIM (UG)	6	17	15	22	8	-63.6%	33.3%
<b>Health Info Mgmt Total:</b>	<b>6</b>	<b>17</b>	<b>15</b>	<b>22</b>	<b>8</b>	<b>-63.6%</b>	<b>33.3%</b>
<b>Mathematics</b>							
Comp/Stat/Math. (GR)	3	2	6	2	1	-50.0%	-66.7%
Math. Edu. (GR)	2	6	3	5	2	-60.0%	0.0%
Math. Science (UG)	34	29	33	26	42	61.5%	23.5%
<b>Mathematics Total:</b>	<b>39</b>	<b>37</b>	<b>42</b>	<b>33</b>	<b>45</b>	<b>36.4%</b>	<b>15.4%</b>
<b>Nursing</b>							
M.S.N./M.P.A. in Nursing (GR)	4	5	5	10	3	-70.0%	-25.0%
Nursing (UG)	56	35	33	59	69	16.9%	23.2%
Nursing (GR)	20	26	13	27	26	-3.7%	30.0%
<b>Nursing Total:</b>	<b>80</b>	<b>66</b>	<b>51</b>	<b>96</b>	<b>98</b>	<b>2.1%</b>	<b>22.5%</b>
<i>NAHS UG Total:</i>	<i>243</i>	<i>235</i>	<i>239</i>	<i>240</i>	<i>244</i>	<i>1.7%</i>	<i>0.4%</i>
<i>NAHS GR Total:</i>	<i>29</i>	<i>39</i>	<i>27</i>	<i>44</i>	<i>32</i>	<i>-27.3%</i>	<i>10.3%</i>
<b>NAHS Total:</b>	<b>272</b>	<b>274</b>	<b>266</b>	<b>284</b>	<b>276</b>	<b>-2.8%</b>	<b>1.5%</b>

## Degrees Conferred by Department and Program

### School of Visual and Performing Arts

	FISCAL YR 2004-05	FISCAL YR 2005-06	FISCAL YR 2006-07	FISCAL YR 2007-08	FISCAL YR 2008-09	1-YEAR CHANGE	5-YEAR CHANGE
<b>DEGREES CONFERRED</b>							
<b>Design</b>							
Graphic Comm (UG)	12	15	14	20	11	-45.0%	-8.3%
Graphic Comm (GR)	16	6	11	18	10	-44.4%	-37.5%
Industrial Design (UG)	5	5	9	5	3	-40.0%	-40.0%
Interior Design (UG)	30	33	37	24	25	4.2%	-16.7%
Visual Comm (UG)	32	26	28	38	25	-34.2%	-21.9%
<b>Design Total:</b>	<b>95</b>	<b>85</b>	<b>99</b>	<b>105</b>	<b>74</b>	<b>-29.5%</b>	<b>-22.1%</b>
<b>Fine Arts</b>							
Art History (UG)	4	7	6	4	3	-25.0%	-25.0%
Fine Arts (UG)	11	20	29	25	22	-12.0%	100.0%
Fine Arts Edu (GR)	13	15	19	22	19	-13.6%	46.2%
Studio Art (UG)	3	5	6	11	9	-18.2%	200.0%
<b>Fine Arts Total:</b>	<b>31</b>	<b>47</b>	<b>60</b>	<b>62</b>	<b>53</b>	<b>-14.5%</b>	<b>71.0%</b>
<b>Music</b>							
Music (UG)	2	6	4	5	6	20.0%	200.0%
Music Edu. (UG)	6	0	3	2	2	0.0%	-66.7%
<b>Music Total:</b>	<b>8</b>	<b>6</b>	<b>7</b>	<b>7</b>	<b>8</b>	<b>14.3%</b>	<b>0.0%</b>
<b>Theatre</b>							
Speech & Theatre (UG)	1	0	0	2	0	-100.0%	-100.0%
Theatre (UG)	2	10	4	7	9	28.6%	350.0%
Theatre Design & Tech. (UG)	0	0	0	2	1	-50.0%	
Theatre Performance (UG)	0	0	0	2	4	100.0%	
<b>Theatre Total:</b>	<b>3</b>	<b>10</b>	<b>4</b>	<b>13</b>	<b>14</b>	<b>7.7%</b>	<b>366.7%</b>
<b>VPA Other</b>							
Liberal Studies (GR)	8	8	5	6	6	0.0%	-25.0%
<b>VPA Other Total:</b>	<b>8</b>	<b>8</b>	<b>5</b>	<b>6</b>	<b>6</b>	<b>0.0%</b>	<b>-25.0%</b>
<i>VPA UG Total:</i>	<i>108</i>	<i>127</i>	<i>140</i>	<i>147</i>	<i>120</i>	<i>-18.4%</i>	<i>11.1%</i>
<i>VPA GR Total:</i>	<i>37</i>	<i>29</i>	<i>35</i>	<i>46</i>	<i>35</i>	<i>-23.9%</i>	<i>-5.4%</i>
<b>VPA Total:</b>	<b>145</b>	<b>156</b>	<b>175</b>	<b>193</b>	<b>155</b>	<b>-19.7%</b>	<b>6.9%</b>

## Degrees Conferred by Department and Program Nathan Weiss Graduate College

Degrees Conferred

	FISCAL YR 2004-05	FISCAL YR 2005-06	FISCAL YR 2006-07	FISCAL YR 2007-08	FISCAL YR 2008-09	1-YEAR CHANGE	5-YEAR CHANGE
<b>DEGREES CONFERRED</b>							
<b>Edu Leadership</b>							
Edu Admin. (GR)	92	85	96	91	89	-2.2%	-3.3%
<b>Edu Leadership Total:</b>	<b>92</b>	<b>85</b>	<b>96</b>	<b>91</b>	<b>89</b>	<b>-2.2%</b>	<b>-3.3%</b>
<b>Grad Mgmt Studies</b>							
MBA in Global Management (GR)	0	0	3	17	52	205.9%	
MIS (GR)	17	21	10	16	2	-87.5%	-88.2%
<b>Grad Mgmt Studies Total:</b>	<b>17</b>	<b>21</b>	<b>13</b>	<b>33</b>	<b>54</b>	<b>63.6%</b>	<b>217.6%</b>
<b>NWGC Other</b>							
Holocaust & Genocide (GR)	0	0	0	1	3	200.0%	
<b>NWGC Other Total:</b>	<b>0</b>	<b>0</b>	<b>0</b>	<b>1</b>	<b>3</b>	<b>200.0%</b>	
<b>Occupational Therapy - GR</b>							
Occupational Therapy (GR)	10	10	12	18	29	61.1%	190.0%
<b>Occupational Therapy - GR Total:</b>	<b>10</b>	<b>10</b>	<b>12</b>	<b>18</b>	<b>29</b>	<b>61.1%</b>	<b>190.0%</b>
<b>Sci &amp; Tech Edu</b>							
Biotechnology (GR)	3	8	8	4	8	100.0%	166.7%
Science & Tech. (UG)	0	0	0	10	17	70.0%	
Science & Tech. (GR)	0	0	0	0	4		
<b>Sci &amp; Tech Edu Total:</b>	<b>3</b>	<b>8</b>	<b>8</b>	<b>14</b>	<b>29</b>	<b>107.1%</b>	<b>866.7%</b>
<b>Social Work - Graduate</b>							
Social Work (GR)	53	54	46	41	42	2.4%	-20.8%
<b>Social Work - Graduate Total:</b>	<b>53</b>	<b>54</b>	<b>46</b>	<b>41</b>	<b>42</b>	<b>2.4%</b>	<b>-20.8%</b>
<i>NWGC UG Total:</i>	<i>0</i>	<i>0</i>	<i>0</i>	<i>10</i>	<i>17</i>	<i>70.0%</i>	
<i>NWGC GR Total:</i>	<i>175</i>	<i>178</i>	<i>175</i>	<i>188</i>	<i>229</i>	<i>21.8%</i>	<i>30.9%</i>
<b>NWGC Total:</b>	<b>175</b>	<b>178</b>	<b>175</b>	<b>198</b>	<b>246</b>	<b>24.2%</b>	<b>40.6%</b>





# Kean University - Employees



## *Employees*

Page 34

At-a-Glance

## Fall 2009 Employee Demographics

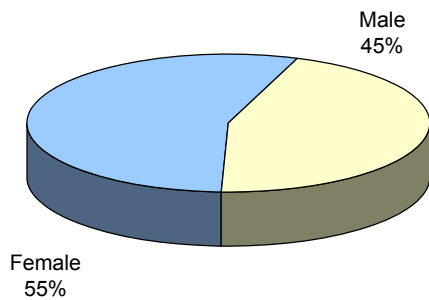
	TOTAL		FACULTY		STAFF	
	TOTAL	%	#	%	#	%
TOTAL FULL-TIME	1,147	100.0%	352	100.0%	795	100.0%
GENDER						
Male	515	44.9%	189	53.7%	326	41.0%
Female	632	55.1%	163	46.3%	469	59.0%
RACE / ETHNICITY						
Black	237	20.7%	34	9.7%	203	25.5%
Hispanic	207	18.0%	26	7.4%	181	22.8%
Asian	82	7.1%	39	11.1%	43	5.4%
White	612	53.4%	251	71.3%	361	45.4%
Multi-race	2	0.2%			2	0.3%
Not Reported	7	0.6%	2	0.6%	5	0.6%
EMPLOYEE GROUP						
Faculty	352	30.7%	352	100.0%		
Administrative & Managerial	165	14.4%			165	20.8%
Professional	203	17.7%			203	25.5%
Clerk & Secretarial	153	13.3%			153	19.2%
Technical & Paraprofessional	82	7.1%			82	10.3%
Service Maintenance	148	12.9%			148	18.6%
Skilled Crafts	44	3.8%			44	5.5%
AGE						
< 30	95	8.3%	2	0.6%	93	11.7%
30 - 39	190	16.6%	35	9.9%	155	19.5%
40 - 49	261	22.8%	69	19.6%	192	24.2%
50 - 59	302	26.3%	91	25.9%	211	26.5%
60 - 69	244	21.3%	121	34.4%	123	15.5%
70 +	55	4.8%	34	9.7%	21	2.6%
Average Age	50	-	56	-	47	-
PART TIME EMPLOYEES	49	-	24	-	25	-
ADJUNCT FACULTY	953	-	953	-		

\* Numbers represent full-time faculty and staff only, unless otherwise noted.

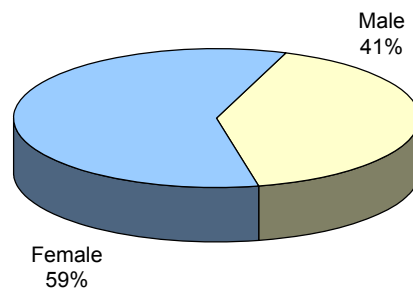
Additional information is available online at <http://ir.kean.edu>.



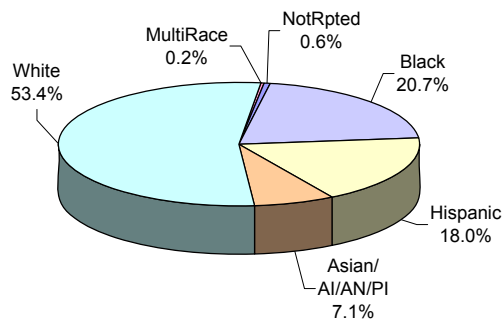
**FULL-TIME EMPLOYEES  
By Gender**



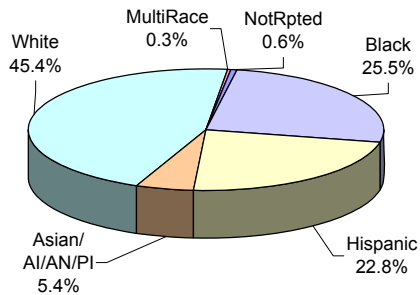
**FULL-TIME STAFF  
By Gender**



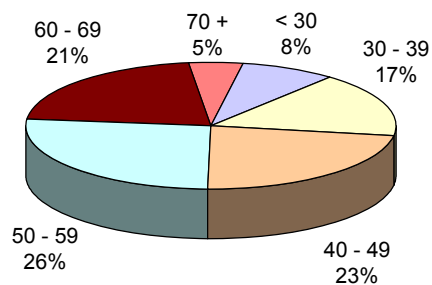
**FULL-TIME EMPLOYEES  
By Race/Ethnicity**



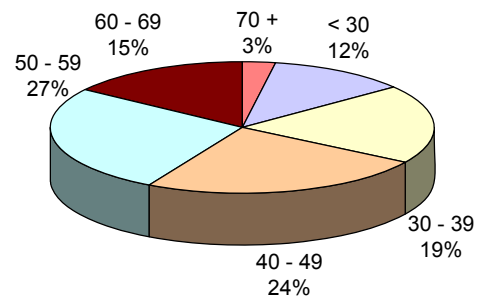
**FULL-TIME STAFF  
By Race/Ethnicity**



**FULL-TIME EMPLOYEES  
By Age Group**



**FULL-TIME STAFF  
By Age Group**



The charts for full-time faculty are located in the “Faculty” section.





# Kean University – Faculty

## *Faculty*

Page 38	At-a-Glance
Page 40	Faculty Trends
Page 42	Full-Time Faculty by Department College of Business and Public Administration College of Education
Page 43	Full-Time Faculty by Department College of Humanities and Social Sciences College of Natural, Applied, and Health Sciences
Page 44	Full-Time Faculty by Department School of Visual and Performing Arts Nathan Weiss Graduate College
Page 45	Distribution of Full-Time Faculty by Age



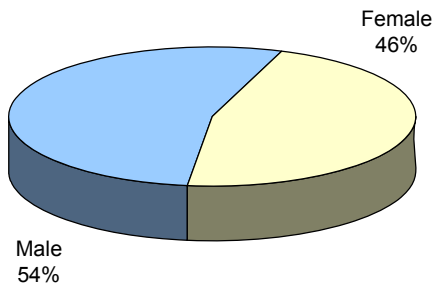
# Fall 2009 Faculty Demographics

	UNIVERSITY		COLLEGES					
	TOTAL	%	BPA	EDU	HSS	NAHS	NWGC	VPA
TOTAL FULL-TIME	352	100.0%	49	70	94	69	27	40
GENDER								
Male	189	53.7%	34	24	49	45	11	23
Female	163	46.3%	15	46	45	24	16	17
RACE / ETHNICITY								
Black	34	9.7%	6	6	11	4	4	3
Hispanic	26	7.4%	5	10	5	3	0	2
Asian	39	11.1%	7	3	7	16	4	1
White	251	71.3%	31	51	70	45	19	34
Not Reported	2	0.6%	0	0	1	1	0	0
TENURE STATUS								
Tenured	267	75.9%	34	55	75	53	11	36
Tenure Track	75	21.3%	13	13	16	15	15	3
Not on Tenure Track	10	2.8%	2	2	3	1	1	1
RANK								
Professor	130	36.9%	16	24	40	30	3	15
Associate Professor	84	23.9%	13	19	18	15	6	13
Assistant Professor	132	37.5%	18	25	34	24	18	12
Instructor	6	1.7%	2	2	2	0	0	0
EDUCATION								
Highest Degree								
Doctorate	300	85.2%	40	64	88	62	25	18
Master's	51	14.5%	9	6	6	7	2	21
Terminal Degree in Field	320	90.9%	43	65	92	62	25	30
AGE								
Average Age	55	-	55	59	56	53	50	53
Faculty >= 60	155	44.0%	21	46	42	23	8	13
PART-TIME FACULTY	24	-	0	20	3	1	0	0
ADJUNCT FACULTY	953	-						

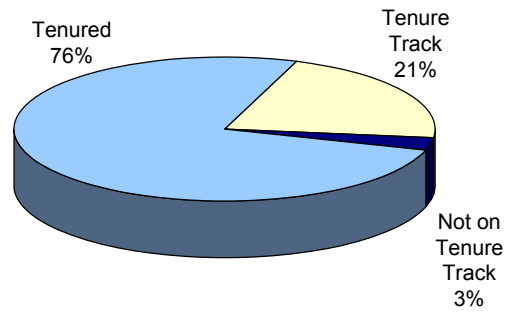
\* Numbers represent full-time faculty only, unless otherwise noted.

Additional information is available online at <http://ir.kean.edu>.

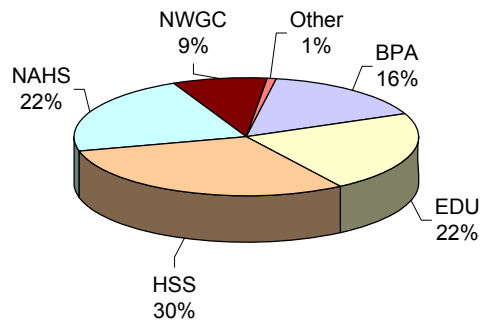
**FULL-TIME FACULTY  
By Gender**



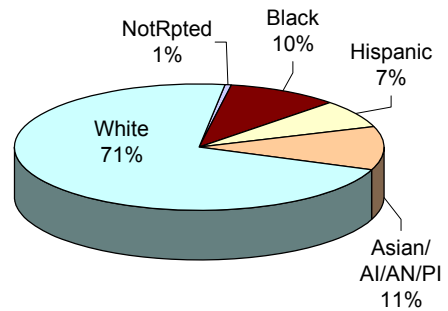
**FULL-TIME FACULTY  
By Tenure Status**



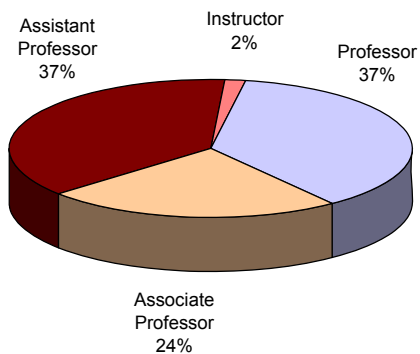
**FULL-TIME FACULTY  
By College**



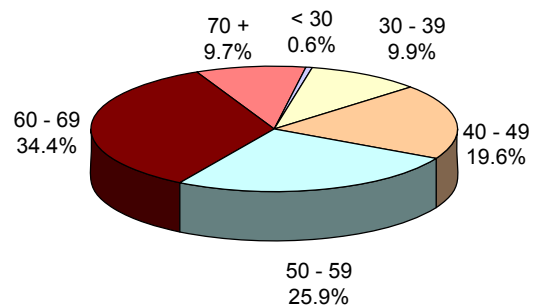
**FULL-TIME FACULTY  
By Race/Ethnicity**



**FULL-TIME FACULTY  
By Rank**



**FULL-TIME FACULTY  
By Age Group**

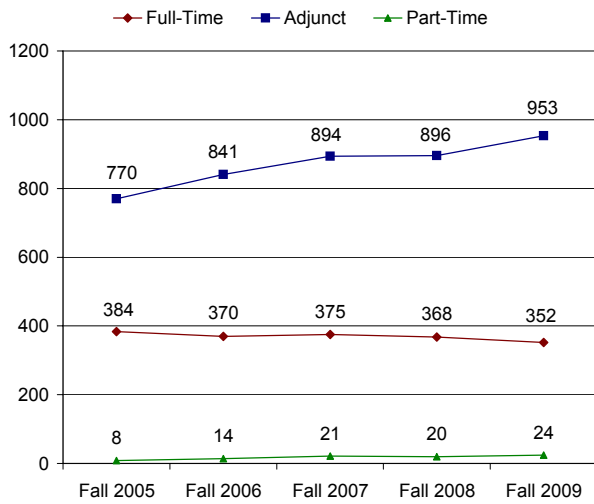


# Faculty Trends (Fall 2005 - Fall 2009)

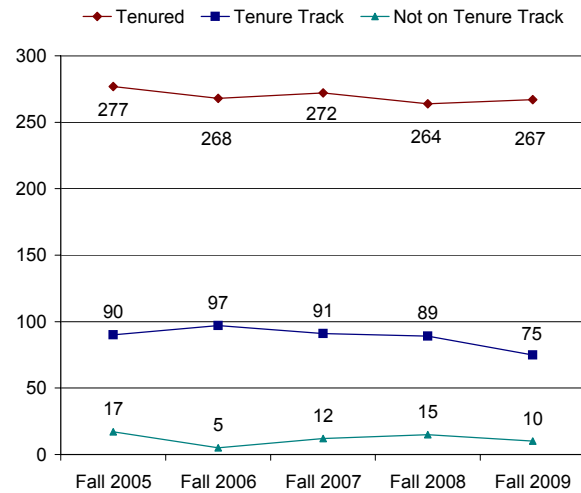
	FALL 2005	FALL 2006	Fall 2007	Fall 2008	Fall 2009	1-YEAR CHANGE	5-YEAR CHANGE
<b>TOTAL FULL-TIME</b>	384	370	375	368	352	-4.3%	-8.3%
<b>GENDER</b>							
Male	208	199	199	201	189	-6.0%	-9.1%
Female	176	171	176	167	163	-2.4%	-7.4%
<b>RACE / ETHNICITY</b>							
Black	41	41	40	38	34	-10.5%	-17.1%
Hispanic	30	31	30	29	26	-10.3%	-13.3%
Asian	28	28	38	40	39	-2.5%	39.3%
White	282	268	264	259	251	-3.1%	-11.0%
Not Reported	3	2	3	2	2	0.0%	-33.3%
<b>TENURE STATUS</b>							
Tenured	277	268	272	264	267	1.1%	-3.6%
Tenure Track	90	97	91	89	75	-15.7%	-16.7%
Not on Tenure Track	17	5	12	15	10	-33.3%	-41.2%
<b>RANK</b>							
Professor	147	144	138	138	130	-5.8%	-11.6%
Associate Professor	98	93	90	85	84	-1.2%	-14.3%
Assistant Professor	136	129	143	137	132	-3.6%	-2.9%
Instructor	3	4	4	8	6	-25.0%	100.0%
<b>EDUCATION</b>							
<b>Highest Degree</b>							
Doctorate	318	313	318	311	300	-3.5%	-5.7%
Master's	64	57	57	57	51	-10.5%	-20.3%
Bachelor's	1	0	0	0	0		-100.0%
Not Reported	1	0	0	0	0		-100.0%
<b>Terminal Degree in Field</b>	341	336	338	331	320	-3.3%	-6.2%
<b>AGE</b>							
Average Age	54.68	55.03	54.42	55.22	55.77	1.0%	2.0%
Faculty >= 60	139	146	147	153	155	1.3%	11.5%
<b>PART-TIME FACULTY</b>	8	14	21	20	24	20.0%	200.0%
<b>ADJUNCT FACULTY</b>	770	841	894	896	953	6.4%	23.8%

\* Numbers represent full-time faculty only, unless otherwise noted.

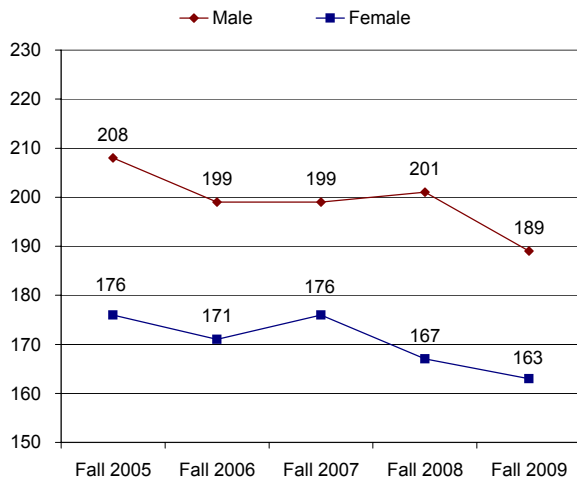
## FACULTY HEADCOUNT Fall 2005 - Fall 2009



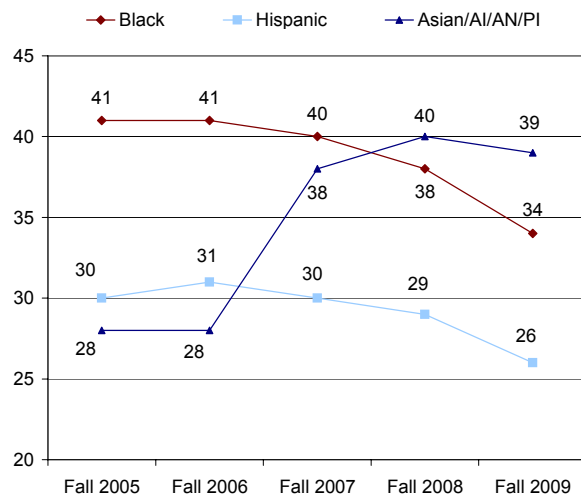
## TENURE STATUS Fall 2005 - Fall 2009



## GENDER Fall 2005 - Fall 2009



## MINORITY FACULTY HEADCOUNT Fall 2005 - Fall 2009





## Full-Time Faculty by Department College of Business and Public Administration

	FALL 2005	FALL 2006	FALL 2007	FALL 2008	FALL 2009	1-YEAR CHANGE	5-YEAR CHANGE
<b>NUMBER OF FACULTY</b>							
<b>Accounting</b>	9	9	8	8	10	25.0%	11.1%
<b>Economics/Finance</b>	10	10	11	11	11	0.0%	10.0%
<b>Management</b>	13	10	12	11	9	-18.2%	-30.8%
<b>Marketing</b>	6	5	5	5	5	0.0%	-16.7%
<b>Public Adm</b>	7	7	7	8	8	0.0%	14.3%
<b>Criminal Justice</b>	5	5	6	6	6	0.0%	20.0%
<b>BPA Faculty Total:</b>	<b>50</b>	<b>46</b>	<b>49</b>	<b>49</b>	<b>49</b>	<b>0.0%</b>	<b>-2.0%</b>

## Full-Time Faculty by Department College of Education

	FALL 2005	FALL 2006	FALL 2007	FALL 2008	FALL 2009	1-YEAR CHANGE	5-YEAR CHANGE
<b>NUMBER OF FACULTY</b>							
<b>Comm Disorder/Deaf</b>	9	8	8	7	7	0.0%	-22.2%
<b>Comm Sci/Edu Svcs</b>	11	10	11	11	9	-18.2%	-18.2%
<b>Early Childhd/Family</b>	10	11	10	8	8	0.0%	-20.0%
<b>Phys Ed/Rec/Health</b>	18	17	16	16	16	0.0%	-11.1%
<b>Special Edu</b>	10	9	9	8	6	-25.0%	-40.0%
<b>Counselor Edu</b>	5	5	5	6	5	-16.7%	0.0%
<b>Elem Ed/Bil Ed</b>	15	13	8	6	6	0.0%	-60.0%
<b>Mid Sec Ed</b>	7	8	11	11	10	-9.1%	42.9%
<b>Global Edu Innovation</b>	7	7	8	5	3	-40.0%	-57.1%
<b>EDU Faculty Total:</b>	<b>94</b>	<b>91</b>	<b>86</b>	<b>78</b>	<b>70</b>	<b>-10.3%</b>	<b>-25.5%</b>

### Full-Time Faculty by Department College of Humanities and Social Sciences

	FALL 2005	FALL 2006	FALL 2007	FALL 2008	FALL 2009	1-YEAR CHANGE	5-YEAR CHANGE
<b>NUMBER OF FACULTY</b>							
<b>Communication</b>	12	12	12	12	12	0.0%	0.0%
<b>English</b>	25	25	25	26	25	-3.8%	0.0%
<b>History</b>	12	11	12	14	16	14.3%	33.3%
<b>Political Science</b>	7	7	7	7	10	42.9%	42.9%
<b>Psychology</b>	21	19	20	18	15	-16.7%	-28.6%
<b>Social Work</b>	6	6	6	5	3	-40.0%	-50.0%
<b>Sociology/Anthropology</b>	12	12	12	14	13	-7.1%	8.3%
<b>HSS Faculty Total:</b>	<b>102</b>	<b>99</b>	<b>101</b>	<b>102</b>	<b>94</b>	<b>-7.8%</b>	<b>-7.8%</b>

### Full-Time Faculty by Department College of Natural, Applied, and Health Sciences

	FALL 2005	FALL 2006	FALL 2007	FALL 2008	FALL 2009	1-YEAR CHANGE	5-YEAR CHANGE
<b>NUMBER OF FACULTY</b>							
<b>Biological Sciences</b>	15	13	14	16	15	-6.3%	0.0%
<b>Chemistry/Physics</b>	11	12	11	11	9	-18.2%	-18.2%
<b>Geology/Meteorology</b>	9	10	11	11	11	0.0%	22.2%
<b>Nursing</b>	7	7	9	8	7	-12.5%	0.0%
<b>Mathematics</b>	12	12	13	13	13	0.0%	8.3%
<b>Computer Science</b>	17	14	15	15	13	-13.3%	-23.5%
<b>Env &amp; Life Sci</b>	0	0	0	0	1		
<b>NAHS Faculty Total:</b>	<b>76</b>	<b>73</b>	<b>78</b>	<b>78</b>	<b>69</b>	<b>-11.5%</b>	<b>-9.2%</b>

## Full-Time Faculty by Department School of Visual and Performing Arts

	FALL 2005	FALL 2006	FALL 2007	FALL 2008	FALL 2009	1-YEAR CHANGE	5-YEAR CHANGE
<b>NUMBER OF FACULTY</b>							
<b>Design</b>	14	14	13	14	12	-14.3%	-14.3%
<b>Fine Arts</b>	17	16	14	14	14	0.0%	-17.6%
<b>Music</b>	8	7	7	7	7	0.0%	-12.5%
<b>Theatre</b>	6	6	6	6	7	16.7%	16.7%
<b>VPA Faculty Total:</b>	<b>45</b>	<b>43</b>	<b>40</b>	<b>41</b>	<b>40</b>	<b>-2.4%</b>	<b>-11.1%</b>

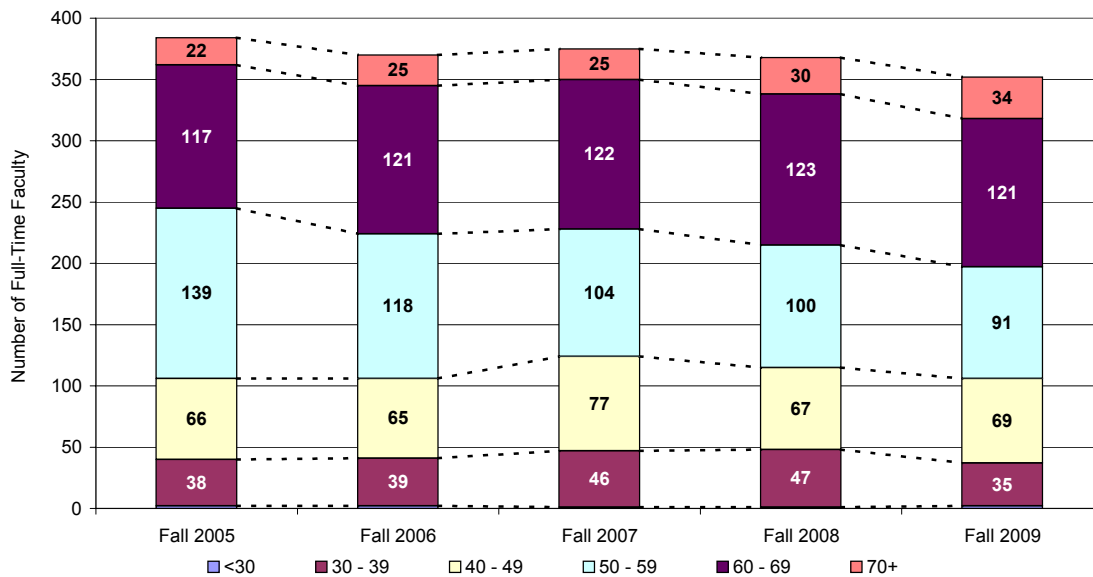
## Full-Time Faculty by Department Nathan Weiss Graduate College

	FALL 2005	FALL 2006	FALL 2007	FALL 2008	FALL 2009	1-YEAR CHANGE	5-YEAR CHANGE
<b>NUMBER OF FACULTY</b>							
<b>Edu Leadership</b>	5	5	7	7	7	0.0%	40.0%
<b>Grad Mgmt Studies</b>	2	3	3	3	3	0.0%	50.0%
<b>Sci &amp; Tech Edu</b>	5	5	6	6	6	0.0%	20.0%
<b>Doctoral Stu Psyc</b>	0	0	0	0	2		
<b>Social Work - Graduate</b>	5	5	5	4	6	50.0%	20.0%
<b>Occupational Therapy - GR</b>	0	0	0	0	3		
<b>NWGC Faculty Total:</b>	<b>17</b>	<b>18</b>	<b>21</b>	<b>20</b>	<b>27</b>	<b>35.0%</b>	<b>58.8%</b>

## Distribution of Full-Time Faculty by Age

	FALL 2005	FALL 2006	FALL 2007	FALL 2008	FALL 2009		5-YEAR CHANGE
					No.	%	
<b>AGE</b>							
< 30	2	2	1	1	2	0.6%	0.0%
30 - 39	38	39	46	47	35	9.9%	-7.9%
40 - 49	66	65	77	67	69	19.6%	4.5%
50 - 59	139	118	104	100	91	25.9%	-34.5%
60 - 69	117	121	122	123	121	34.4%	3.4%
70 +	22	25	25	30	34	9.7%	54.5%
<b>TOTAL</b>	<b>384</b>	<b>370</b>	<b>375</b>	<b>368</b>	<b>352</b>	<b>100.0%</b>	<b>-8.3%</b>
<b>AVERAGE AGE</b>	<b>54.68</b>	<b>55.03</b>	<b>54.42</b>	<b>55.22</b>	<b>55.77</b>		<b>2.0%</b>

## Distribution of Full-Time Faculty by Age Group Fall 2005 - Fall 2009





Office of Institutional Research  
Kean University  
1000 Morris Avenue  
Union, New Jersey 07083  
<http://ir.kean.edu>  
908.737.3470