



# ***Student & Faculty Profile***

**Kean University**

ESTABROOK WING

K

Fall 2008

Office of Institutional Research

# Quick Facts

Founded:	1855	President:	Dr. Dawood Farahi
Campus Size:	185.4 acres	Mailing Address:	1000 Morris Avenue Union, New Jersey 07083
Main Campus:	121.5 acres		
East Campus:	28.5 acres	Main Phone:	(908) 737-KEAN (908) 737-5326
Liberty Hall Campus:	35.4 acres		
Number of Colleges:	6	Admissions:	(908) 737-7100
Degree Programs Offered:		Public Info:	(908) 737-NEWS (908) 737-6397
Undergraduate Programs	50		
Graduate Programs	35		
Average Class Size:	20		
Student/Faculty Ratio:	16:1		
2007-2008 Tuition and Fees: (full-time, in-state, undergraduate)	\$9,178.50		
2007-2008 Tuition and Fees: (full-time, in-state, graduate)	\$12,698.40		

## Contents

<i>Enrollment</i> .....	<i>Page 01</i>
<i>Degrees Conferred</i> .....	<i>Page 23</i>
<i>Employees</i> .....	<i>Page 33</i>
<i>Faculty</i> .....	<i>Page 37</i>

## *Enrollment*

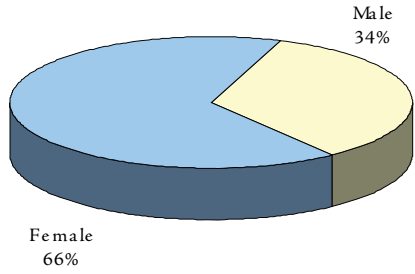
Page 02	At-a-Glance
Page 04	Enrollment Trends
Page 06	Enrollment by Geographic Origin
Page 08	Retention & Graduation Rates
Page 10	Enrollment by Department and Program
Page 16	Second Majors by Program
Page 17	Course FTE

## Fall 2008 Enrollment At-a-Glance

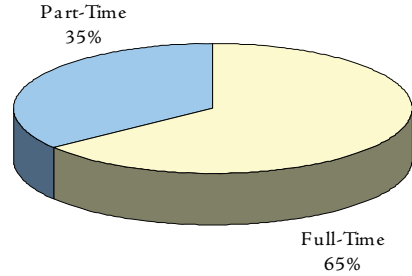
	UNIVERSITY		UNDERGRADUATE		GRADUATE	
	No.	%	No.	%	No.	%
<b>ENROLLMENT</b>						
Headcount	14,203	100%	11,240	100%	2,963	100%
F.T.E.	10421.0		8991.8		1429.2	
<b>GENDER</b>						
Male	4,846	34.1%	4,183	37.2%	663	22.4%
Female	9,357	65.9%	7,057	62.8%	2,300	77.6%
<b>RACE / ETHNICITY</b>						
Black	2,745	19.3%	2,276	20.2%	469	15.8%
Hispanic	2,634	18.5%	2,283	20.3%	351	11.8%
Asian	901	6.3%	773	6.9%	128	4.3%
White	7,232	50.9%	5,321	47.3%	1,911	64.5%
Unknown	691	4.9%	587	5.2%	104	3.5%
<b>ATTENDANCE STATUS</b>						
Full-Time	9,181	64.6%	8,580	76.3%	601	20.3%
Part-Time	5,022	35.4%	2,660	23.7%	2,362	79.7%
<b>ADMISSIONS STATUS</b>						
Regular	6,378	44.9%	4,058	36.1%	2,320	78.3%
Special	533	3.8%	533	4.7%		
E.O.F.	936	6.6%	936	8.3%		
Transfer	4,888	34.4%	4,888	43.5%		
E.O.F. Transfer	269	1.9%	269	2.4%		
Other	1,199	8.4%	556	4.9%	643	21.7%
<b>REGISTRATION STATUS</b>						
First-Time	2,624	18.5%	1,546	13.8%	1,078	36.4%
Transfer	1,497	10.5%	1,497	13.3%		
Stop-out / Readmit	604	4.3%	604	5.4%		
Continuing	9,478	66.7%	7,593	67.6%	1,885	63.6%
<b>AGE</b>						
<25	8,226	57.9%	7,812	69.5%	414	14.0%
25 - 34	3,446	24.3%	2,078	18.5%	1,368	46.2%
35 - 44	1,351	9.5%	793	7.1%	558	18.8%
45 - 54	913	6.4%	454	4.0%	459	15.5%
55+	267	1.9%	103	0.9%	164	5.5%
Average Age	27		25		35	
<b>MATRICULATION STATUS</b>						
Degree Seeking	12,830	90.3%	10,907	97.0%	1,923	64.9%
Certificate / Non-Degree	656	4.6%	235	2.1%	421	14.2%
Non-matriculated	717	5.0%	98	0.9%	619	20.9%
<b>STATE RESIDENCE</b>						
New Jersey	13,680	96.3%	10,839	96.4%	2,841	95.9%
Out-of-State	246	1.7%	188	1.7%	58	2.0%
International	277	2.0%	213	1.9%	64	2.2%

Additional information is available online at <http://ir.kean.edu>.

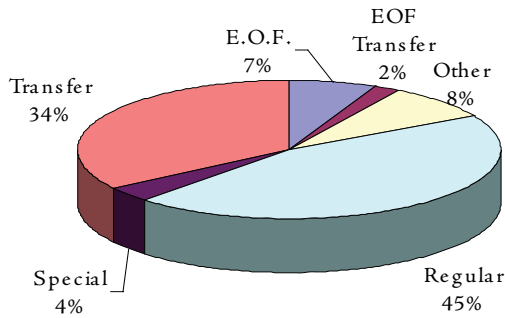
**DISTRIBUTION OF STUDENTS BY GENDER**



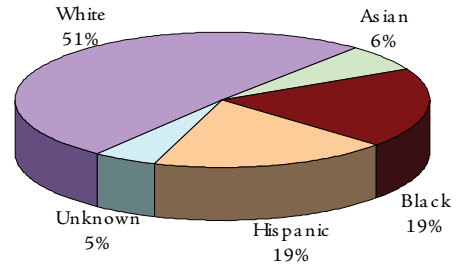
**DISTRIBUTION OF STUDENTS BY ATTENDANCE STATUS**



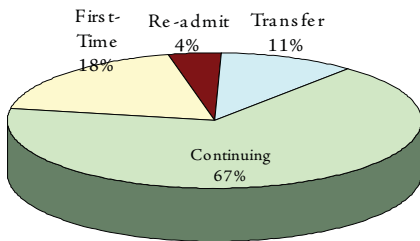
**DISTRIBUTION OF STUDENTS BY ADMISSION STATUS**



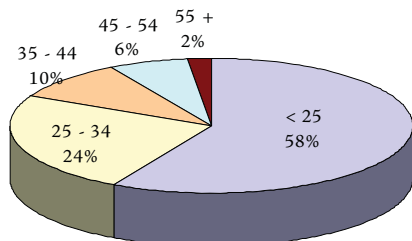
**DISTRIBUTION OF STUDENTS BY ETHNICITY**



**DISTRIBUTION OF STUDENTS BY REGISTRATION STATUS**



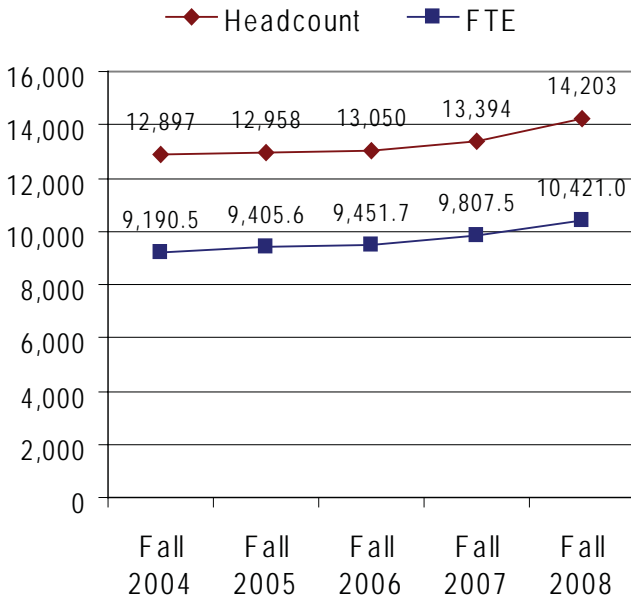
**DISTRIBUTION OF STUDENTS BY AGE GROUP**



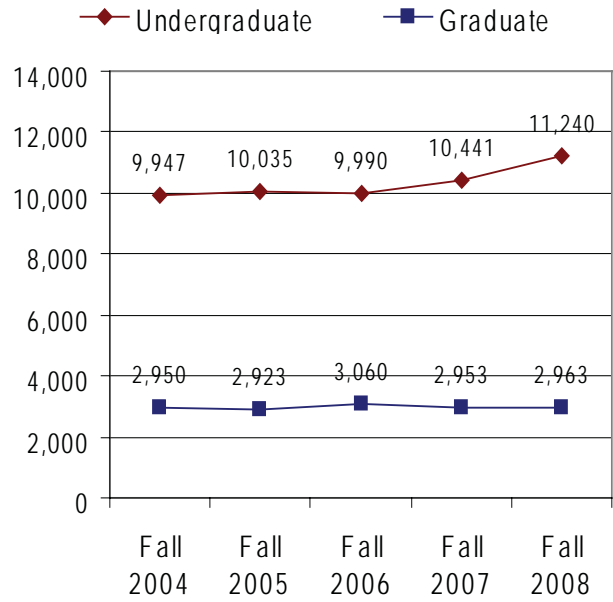
## Enrollment Trends (Fall 2004 - Fall 2008)

	FALL 2004	FALL 2005	FALL 2006	FALL 2007	FALL 2008	1 YEAR CHANGE	5 YEAR CHANGE
<b>ENROLLMENT</b>							
Headcount	12,897	12,958	13,050	13,394	14,203	6.0%	10.1%
F.T.E.	9190.5	9405.6	9451.7	9807.5	10421.0	6.3%	13.4%
Undergraduate	9,947	10,035	9,990	10,441	11,240	7.7%	13.0%
Graduate	2,950	2,923	3,060	2,953	2,963	0.3%	0.4%
<b>GENDER</b>							
Male	4,179	4,322	4,343	4,515	4,846	7.3%	16.0%
Female	8,718	8,636	8,707	8,879	9,357	5.4%	7.3%
<b>RACE / ETHNICITY</b>							
Black	2,640	2,701	2,525	2,570	2,745	6.8%	4.0%
Hispanic	2,268	2,312	2,271	2,405	2,634	9.5%	16.1%
Asian	830	831	810	809	901	11.4%	8.6%
White	6,756	6,657	6,866	6,985	7,232	3.5%	7.0%
Unknown	403	457	578	625	691	10.6%	71.5%
<b>ATTENDANCE STATUS</b>							
Full-Time	7,936	8,204	8,250	8,590	9,181	6.9%	15.7%
Part-Time	4,961	4,754	4,800	4,804	5,022	4.5%	1.2%
<b>ADMISSIONS STATUS</b>							
Regular	6,450	6,583	6,488	6,624	6,378	-3.7%	-1.1%
Special	526	514	517	512	533	4.1%	1.3%
E.O.F.	846	873	834	921	936	1.6%	10.6%
Transfer	3,990	3,966	4,125	4,366	4,888	12.0%	22.5%
E.O.F. Transfer	238	223	207	246	269	9.3%	13.0%
Other	847	799	879	725	1,199	65.4%	41.6%
<b>REGISTRATION STATUS</b>							
First-Time	2,441	2,585	2,724	2,563	2,624	2.4%	7.5%
Transfer	1,071	992	1,256	1,278	1,497	17.1%	39.8%
Stop-out / Readmit	545	498	444	531	604	13.7%	10.8%
Continuing	8,840	8,883	8,626	9,022	9,478	5.1%	7.2%
<b>AGE</b>							
<25	6,898	7,208	7,425	7,753	8,226	6.1%	19.3%
25 - 34	3,274	3,172	3,048	3,129	3,446	10.1%	5.3%
35 - 44	1,540	1,446	1,395	1,342	1,351	0.7%	-12.3%
45 - 54	949	896	930	893	913	2.2%	-3.8%
55+	235	236	252	277	267	-3.6%	13.6%
Not Reported	1	0	0	0	0		
Average Age	27.71	27.35	27.27	27.04	26.93		
<b>MATRICULATION STATUS</b>							
Degree Seeking	11,331	11,569	11,600	12,062	12,830	6.4%	13.2%
Certificate / Non-Degree	725	644	613	638	656	2.8%	-9.5%
Non-matriculated	841	745	837	694	717	3.3%	-14.7%
<b>STATE RESIDENCE</b>							
New Jersey	12,382	12,469	12,544	12,888	13,680	6.1%	10.5%
Out-of-State	194	201	237	230	246	7.0%	26.8%
International	321	287	268	276	277	0.4%	-13.7%
Not Reported	0	1	1	0	0		

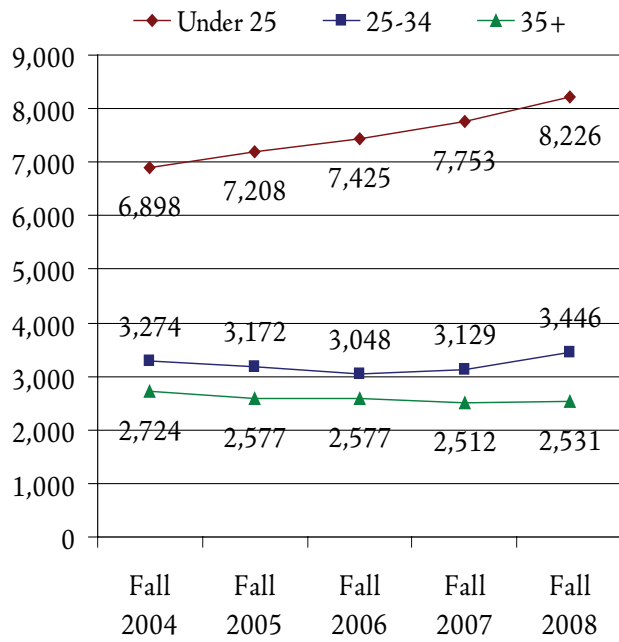
### HEADCOUNT & FTE FALL 2004 - FALL 2008



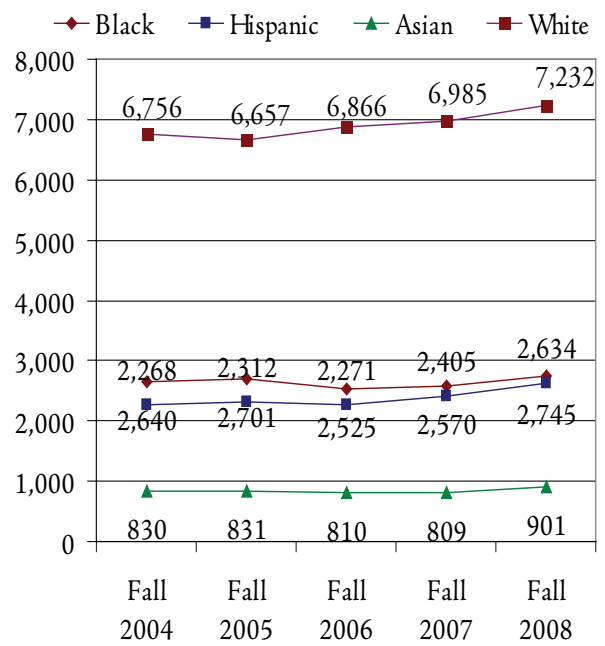
### UNDERGRADUATE & GRADUATE FALL 2004 - FALL 2008



### AGE GROUP FALL 2004 - FALL 2008



### RACE / ETHNICITY FALL 2004 - FALL 2008



## Enrollment by Geographic Origin

	FALL	FALL	FALL	FALL	FALL 2008		5-YEAR
	2004	2005	2006	2007	No.	%	CHANGE
<b>NEW JERSEY RESIDENTS</b>	<b>12,382</b>	<b>12,469</b>	<b>12,544</b>	<b>12,888</b>	<b>13,680</b>	<b>96.3%</b>	<b>10.5%</b>
Union	3,843	3,849	3,633	3,692	3,752	26.4%	-2.4%
Middlesex	2,993	3,101	3,000	3,049	3,263	23.0%	9.0%
Essex	1,671	1,681	1,518	1,523	1,655	11.7%	-1.0%
Ocean	280	277	521	681	940	6.6%	235.7%
Monmouth	1,016	942	925	930	904	6.4%	-11.0%
Somerset	387	396	694	714	769	5.4%	98.7%
Hudson	486	480	504	536	588	4.1%	21.0%
Bergen	408	439	440	443	465	3.3%	14.0%
Morris	408	427	390	383	380	2.7%	-6.9%
Passaic	269	246	245	258	262	1.8%	-2.6%
Hunterdon	82	101	126	135	135	1.0%	64.6%
Mercer	108	114	118	114	136	1.0%	25.9%
Burlington	101	115	114	106	115	0.8%	13.9%
Warren	65	60	62	60	75	0.5%	15.4%
Sussex	72	65	48	43	51	0.4%	-29.2%
Camden	63	58	69	77	56	0.4%	-11.1%
Atlantic	46	53	54	51	51	0.4%	10.9%
Gloucester	19	23	34	39	38	0.3%	100.0%
Cape May	16	18	25	18	13	0.1%	-18.8%
Cumberland	19	16	14	22	20	0.1%	5.3%
Salem	8	8	9	14	12	0.1%	50.0%
County Unknown	22	0	1	0	0		
<b>NON-RESIDENTS</b>	<b>194</b>	<b>201</b>	<b>237</b>	<b>230</b>	<b>246</b>	<b>1.7%</b>	<b>26.8%</b>
New York	138	140	163	159	184	1.3%	33.3%
Pennsylvania	26	24	35	26	25	0.2%	-3.8%
Other	30	37	39	45	37	0.3%	23.3%
<b>INTERNATIONAL</b>	<b>321</b>	<b>287</b>	<b>268</b>	<b>276</b>	<b>277</b>	<b>2.0%</b>	<b>-13.7%</b>
<b>NOT REPORTED</b>	<b>0</b>	<b>1</b>	<b>1</b>	<b>0</b>	<b>0</b>		
<b>TOTAL</b>	<b>12,897</b>	<b>12,958</b>	<b>13,050</b>	<b>13,394</b>	<b>14,203</b>	<b>100.0%</b>	<b>10.1%</b>

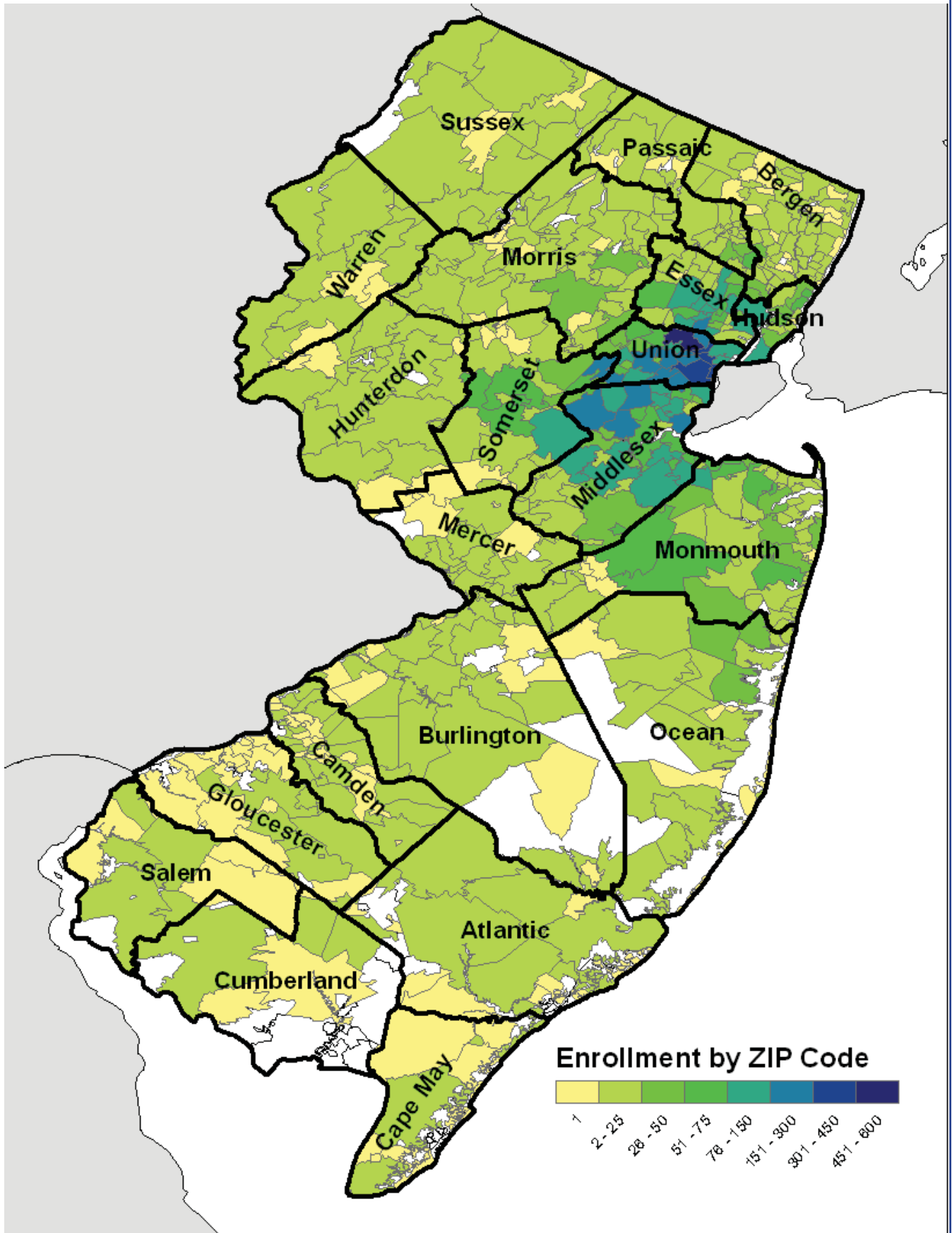
### Top 10 Countries of Citizenship for International Students (in alphabetical order)

Brazil	China, People's Republic
Columbia	India
Kenya	Nigeria
Peru	Philippines
Poland	Portugal

International students come from 76 different countries and areas.



Fall 2008 Enrollment by ZIP Code



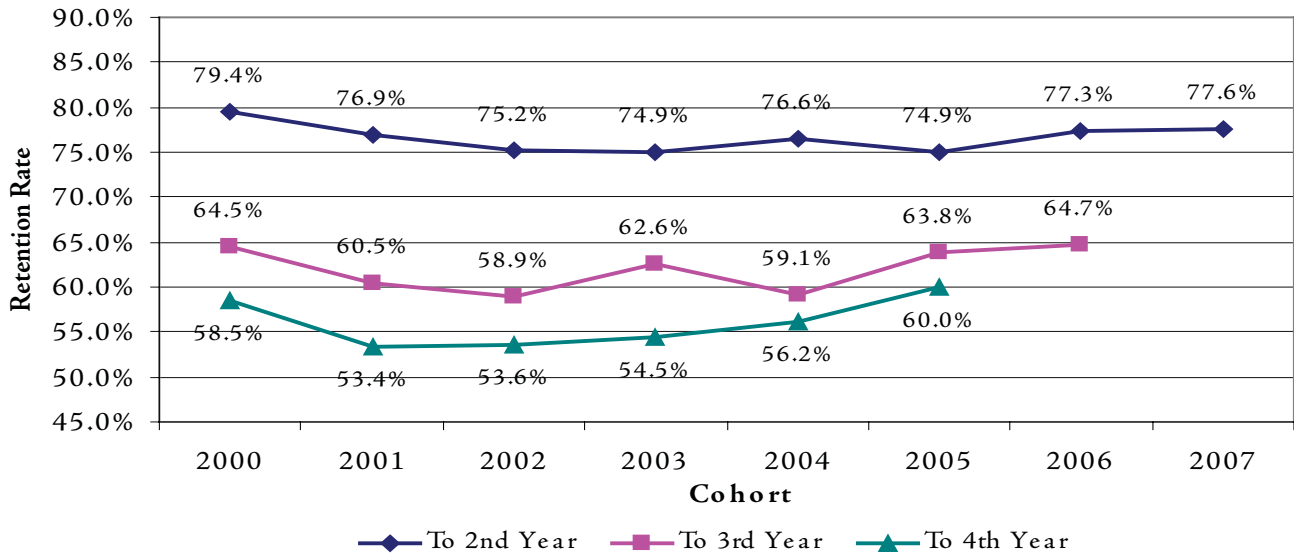
### First-Time, Full-Time Freshmen Retention Rates

COHORT YEAR	HEAD COUNT	# CONTINUED			% CONTINUED		
		TO 2ND YEAR	TO 3RD YEAR	TO 4TH YEAR	TO 2ND YEAR	TO 3RD YEAR	TO 4TH YEAR
1998	1,034	817	682	618	79.01%	65.96%	59.77%
1999	999	780	631	587	78.08%	63.16%	58.76%
2000	1,161	922	749	679	79.41%	64.51%	58.48%
2001	1,132	871	685	605	76.94%	60.51%	53.45%
2002	1,317	991	776	706	75.25%	58.92%	53.61%
2003	1,311	982	821	714	74.90%	62.62%	54.46%
2004	1,254	961	741	705	76.63%	59.09%	56.22%
2005	1,391	1,042	887	835	74.91%	63.77%	60.03%
2006	1,394	1,078	902		77.33%	64.71%	
2007	1,447	1,123			77.61%		

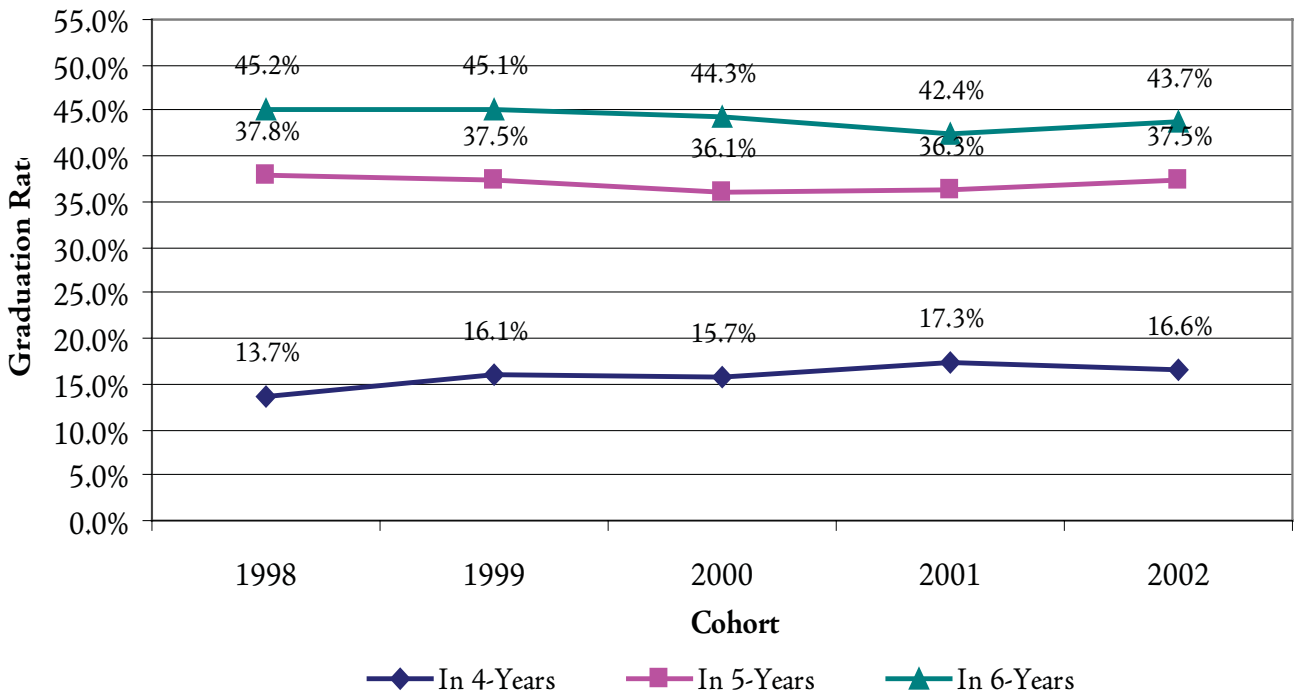
### First-Time, Full-Time Freshmen Graduation Rates

COHORT YEAR	HEAD COUNT	# GRADUATED			% GRADUATED		
		IN 4 YEARS	IN 5 YEARS	IN 6 YEARS	IN 4 YEARS	IN 5 YEARS	IN 6 YEARS
1998	1,034	142	391	467	13.73%	37.81%	45.16%
1999	999	161	375	451	16.12%	37.54%	45.15%
2000	1,161	182	419	514	15.68%	36.09%	44.27%
2001	1,132	196	411	480	17.31%	36.31%	42.40%
2002	1,317	218	494	575	16.55%	37.51%	43.66%

### First-Time, Full-Time Freshmen Retention Rates 2000 - 2007 Cohorts



### First-Time, Full-Time Freshmen Graduation Rates 1998 - 2002 Cohorts



## Enrollment by Department and Program College of Business and Public Administration

	FALL 2004	FALL 2005	FALL 2006	FALL 2007	FALL 2008	1-YEAR CHANGE	5-YEAR CHANGE
<b>ENROLLMENT</b>							
<b>Accounting</b>							
Accounting (UG)	422	399	368	433	516	19.2%	22.3%
Accounting (GR)	83	91	88	74	67	-9.5%	-19.3%
<b>Accounting Total:</b>	<b>505</b>	<b>490</b>	<b>456</b>	<b>507</b>	<b>583</b>	<b>15.0%</b>	<b>15.4%</b>
<b>Criminal Justice</b>							
Criminal Justice (UG)	481	513	530	547	621	13.5%	29.1%
<b>Criminal Justice Total:</b>	<b>481</b>	<b>513</b>	<b>530</b>	<b>547</b>	<b>621</b>	<b>13.5%</b>	<b>29.1%</b>
<b>Economics/Finance</b>							
Economics (UG)	149	178	175	204	228	11.8%	53.0%
Finance (UG)	186	166	149	171	190	11.1%	2.2%
<b>Economics/Finance Total:</b>	<b>335</b>	<b>344</b>	<b>324</b>	<b>375</b>	<b>418</b>	<b>11.5%</b>	<b>24.8%</b>
<b>Management</b>							
Management Sci. (UG)	745	733	669	712	767	7.7%	3.0%
<b>Management Total:</b>	<b>745</b>	<b>733</b>	<b>669</b>	<b>712</b>	<b>767</b>	<b>7.7%</b>	<b>3.0%</b>
<b>Marketing</b>							
Marketing (UG)	271	276	284	292	294	0.7%	8.5%
<b>Marketing Total:</b>	<b>271</b>	<b>276</b>	<b>284</b>	<b>292</b>	<b>294</b>	<b>0.7%</b>	<b>8.5%</b>
<b>Public Adm</b>							
Public Admin. (UG)	110	108	105	118	121	2.5%	10.0%
Public Admin. (GR)	160	169	179	145	138	-4.8%	-13.8%
<b>Public Adm Total:</b>	<b>270</b>	<b>277</b>	<b>284</b>	<b>263</b>	<b>259</b>	<b>-1.5%</b>	<b>-4.1%</b>
<i>BPA UG Total:</i>	<i>2,364</i>	<i>2,373</i>	<i>2,280</i>	<i>2,477</i>	<i>2,737</i>	<i>10.5%</i>	<i>15.8%</i>
<i>BPA GR Total:</i>	<i>243</i>	<i>260</i>	<i>267</i>	<i>219</i>	<i>205</i>	<i>-6.4%</i>	<i>-15.6%</i>
<b>BPA Total:</b>	<b>2,607</b>	<b>2,633</b>	<b>2,547</b>	<b>2,696</b>	<b>2,942</b>	<b>9.1%</b>	<b>12.9%</b>

## Enrollment by Department and Program College of Education

	FALL 2004	FALL 2005	FALL 2006	FALL 2007	FALL 2008	1-YEAR CHANGE	5-YEAR CHANGE
<b>ENROLLMENT</b>							
<b>Comm Disorder/Deaf</b>							
Speech Lang. Pathology (GR)	108	95	103	110	125	13.6%	15.7%
Speech, Lang Hear. Sci. (UG)	131	119	129	138	174	26.1%	32.8%
<b>Comm Disorder/Deaf Total:</b>	<b>239</b>	<b>214</b>	<b>232</b>	<b>248</b>	<b>299</b>	<b>20.6%</b>	<b>25.1%</b>
<b>Comm Sci/Edu Svcs</b>							
Edu/Media/Spec. (GR)	34	41	40	24	23	-4.2%	-32.4%
Reading Spec. (GR)	83	100	93	83	76	-8.4%	-8.4%
<b>Comm Sci/Edu Svcs Total:</b>	<b>117</b>	<b>141</b>	<b>133</b>	<b>107</b>	<b>99</b>	<b>-7.5%</b>	<b>-15.4%</b>
<b>Counselor Edu</b>							
Counselor Edu (GR)	206	230	220	238	236	-0.8%	14.6%
<b>Counselor Edu Total:</b>	<b>206</b>	<b>230</b>	<b>220</b>	<b>238</b>	<b>236</b>	<b>-0.8%</b>	<b>14.6%</b>
<b>Early Childhd/Family</b>							
Early Childhood Edu. (UG)	545	547	570	585	548	-6.3%	0.6%
Early Childhood Edu. (GR)	146	126	102	70	61	-12.9%	-58.2%
<b>Early Childhd/Family Total:</b>	<b>691</b>	<b>673</b>	<b>672</b>	<b>655</b>	<b>609</b>	<b>-7.0%</b>	<b>-11.9%</b>
<b>Elem Ed/Bil Ed *</b>							
Elementary Edu (UG)	0	0	24	73	160	119.2%	
Instruction & Curriculum (GR)	45	50	44	51	56	9.8%	24.4%
<b>Elem Ed/Bil Ed Total:</b>	<b>45</b>	<b>50</b>	<b>68</b>	<b>124</b>	<b>216</b>	<b>74.2%</b>	<b>380.0%</b>
<b>Mid Sec Ed *</b>							
Elem/Mid/Sec Edu (UG)	789	840	836	769	716	-6.9%	-9.3%
Instruction & Curriculum - MSE (GR)	185	183	164	142	141	-0.7%	-23.8%
<b>Mid Sec Ed Total:</b>	<b>974</b>	<b>1,023</b>	<b>1,000</b>	<b>911</b>	<b>857</b>	<b>-5.9%</b>	<b>-12.0%</b>
<b>Phys Ed/Rec/Health</b>							
Athletic Training (UG)	0	0	0	51	77	51.0%	
Exercise Science (GR)	14	20	23	22	22	0.0%	57.1%
Physical Edu (UG)	385	425	476	478	550	15.1%	42.9%
Recreation Admin. (UG)	58	59	58	72	86	19.4%	48.3%
<b>Phys Ed/Rec/Health Total:</b>	<b>457</b>	<b>504</b>	<b>557</b>	<b>623</b>	<b>735</b>	<b>18.0%</b>	<b>60.8%</b>
<b>Special Edu</b>							
Educator of Indivs with Disabilities (UG)	369	329	214	206	271	31.6%	-26.6%
Special Edu (GR)	217	231	277	317	351	10.7%	61.8%
<b>Special Edu Total:</b>	<b>586</b>	<b>560</b>	<b>491</b>	<b>523</b>	<b>622</b>	<b>18.9%</b>	<b>6.1%</b>
<i>EDU UG Total:</i>	<i>2,277</i>	<i>2,319</i>	<i>2,307</i>	<i>2,372</i>	<i>2,582</i>	<i>8.9%</i>	<i>13.4%</i>
<i>EDU GR Total:</i>	<i>1,038</i>	<i>1,076</i>	<i>1,066</i>	<i>1,057</i>	<i>1,091</i>	<i>3.2%</i>	<i>5.1%</i>
<b>EDU Total:</b>	<b>3,315</b>	<b>3,395</b>	<b>3,373</b>	<b>3,429</b>	<b>3,673</b>	<b>7.1%</b>	<b>10.8%</b>

\* Departments split from Elem Mid Sec Education

## Enrollment by Department and Program College of Humanities and Social Sciences

	FALL 2004	FALL 2005	FALL 2006	FALL 2007	FALL 2008	1-YEAR CHANGE	5-YEAR CHANGE
<b>ENROLLMENT</b>							
<b>Communication</b>							
Communication (UG)	213	200	191	201	199	-1.0%	-6.6%
Communication Studies (GR)	10	12	16	21	17	-19.0%	70.0%
<b>Communication Total:</b>	<b>223</b>	<b>212</b>	<b>207</b>	<b>222</b>	<b>216</b>	<b>-2.7%</b>	<b>-3.1%</b>
<b>English</b>							
English (UG)	248	281	315	348	387	11.2%	56.0%
<b>English Total:</b>	<b>248</b>	<b>281</b>	<b>315</b>	<b>348</b>	<b>387</b>	<b>11.2%</b>	<b>56.0%</b>
<b>Foreign Languages</b>							
Spanish (UG)	207	203	200	212	179	-15.6%	-13.5%
<b>Foreign Languages Total:</b>	<b>207</b>	<b>203</b>	<b>200</b>	<b>212</b>	<b>179</b>	<b>-15.6%</b>	<b>-13.5%</b>
<b>History</b>							
History (UG)	321	347	397	401	379	-5.5%	18.1%
<b>History Total:</b>	<b>321</b>	<b>347</b>	<b>397</b>	<b>401</b>	<b>379</b>	<b>-5.5%</b>	<b>18.1%</b>
<b>Philosophy/Religion</b>							
Philosophy and Religion (UG)	14	7	14	8	13	62.5%	-7.1%
<b>Philosophy/Religion Total:</b>	<b>14</b>	<b>7</b>	<b>14</b>	<b>8</b>	<b>13</b>	<b>62.5%</b>	<b>-7.1%</b>
<b>Political Science</b>							
Political Science (UG)	106	119	100	118	139	17.8%	31.1%
Political Science (GR)	4	7	17	18	16	-11.1%	300.0%
<b>Political Science Total:</b>	<b>110</b>	<b>126</b>	<b>117</b>	<b>136</b>	<b>155</b>	<b>14.0%</b>	<b>40.9%</b>
<b>Psychology</b>							
Behavioral Sci (GR)	72	55	48	43	38	-11.6%	-47.2%
Edu Psych (GR)	19	25	10	12	10	-16.7%	-47.4%
Marri & Fam Therapy (GR)	23	29	31	33	24	-27.3%	4.3%
Psych Rehab (UG)	48	44	41	38	54	42.1%	12.5%
Psychology (UG)	765	811	796	816	833	2.1%	8.9%
School Psychology (GR)	32	26	35	32	32	0.0%	0.0%
<b>Psychology Total:</b>	<b>959</b>	<b>990</b>	<b>961</b>	<b>974</b>	<b>991</b>	<b>1.7%</b>	<b>3.3%</b>
<b>Social Work</b>							
Social Work (UG)	156	167	173	213	252	18.3%	61.5%
Social Work (GR)	96	94	88	83	81	-2.4%	-15.6%
<b>Social Work Total:</b>	<b>252</b>	<b>261</b>	<b>261</b>	<b>296</b>	<b>333</b>	<b>12.5%</b>	<b>32.1%</b>
<b>Sociology/Anthropology</b>							
Soc/SocJust (GR)	0	0	0	0	12		
Sociology (UG)	205	188	197	242	294	21.5%	43.4%
<b>Sociology/Anthropology Total:</b>	<b>205</b>	<b>188</b>	<b>197</b>	<b>242</b>	<b>306</b>	<b>26.4%</b>	<b>49.3%</b>
<i>HSS UG Total:</i>	<i>2,283</i>	<i>2,367</i>	<i>2,424</i>	<i>2,597</i>	<i>2,729</i>	<i>5.1%</i>	<i>19.5%</i>
<i>HSS GR Total:</i>	<i>256</i>	<i>248</i>	<i>245</i>	<i>242</i>	<i>230</i>	<i>-5.0%</i>	<i>-10.2%</i>
<b>HSS Total:</b>	<b>2,539</b>	<b>2,615</b>	<b>2,669</b>	<b>2,839</b>	<b>2,959</b>	<b>4.2%</b>	<b>16.5%</b>

## Enrollment by Department and Program College of Natural, Applied, and Health Sciences

	FALL 2004	FALL 2005	FALL 2006	FALL 2007	FALL 2008	1-YEAR CHANGE	5-YEAR CHANGE
<b>ENROLLMENT</b>							
<b>Biological Sciences</b>							
Biology (UG)	385	396	419	479	524	9.4%	36.1%
Medical Tech. (UG)	54	58	59	54	61	13.0%	13.0%
<b>Biological Sciences Total:</b>	<b>439</b>	<b>454</b>	<b>478</b>	<b>533</b>	<b>585</b>	<b>9.8%</b>	<b>33.3%</b>
<b>Chemistry/Physics</b>							
Chemistry (UG)	86	98	91	90	111	23.3%	29.1%
<b>Chemistry/Physics Total:</b>	<b>86</b>	<b>98</b>	<b>91</b>	<b>90</b>	<b>111</b>	<b>23.3%</b>	<b>29.1%</b>
<b>Computer Science</b>							
Comp.Integrated Design & Mfg. Tech. (UG) *	7	14	17	10	1		
Computer Science (UG)	256	192	147	141	132	-6.4%	-48.4%
Electronics Tech. (UG)	49	34	23	21	15	-28.6%	-69.4%
Tech.Edu. (UG) *	2	2	3	1	0		
Telecomm.Info.Tech. (UG)	40	43	28	23	27	17.4%	-32.5%
<b>Computer Science Total:</b>	<b>354</b>	<b>285</b>	<b>218</b>	<b>196</b>	<b>175</b>	<b>-10.7%</b>	<b>-50.6%</b>
<b>Geology/Meteorology</b>							
Earth Science (UG)	77	85	76	82	86	4.9%	11.7%
<b>Geology/Meteorology Total:</b>	<b>77</b>	<b>85</b>	<b>76</b>	<b>82</b>	<b>86</b>	<b>4.9%</b>	<b>11.7%</b>
<b>Health Info Mgmt</b>							
HIM (UG)	61	79	58	42	32	-23.8%	-47.5%
<b>Health Info Mgmt Total:</b>	<b>61</b>	<b>79</b>	<b>58</b>	<b>42</b>	<b>32</b>	<b>-23.8%</b>	<b>-47.5%</b>
<b>Mathematics</b>							
Comp/Stat/Math. (GR)	14	12	6	6	7	16.7%	-50.0%
Math. Edu. (GR)	14	18	13	15	13	-13.3%	-7.1%
Math. Science (UG)	200	205	201	236	249	5.5%	24.5%
<b>Mathematics Total:</b>	<b>228</b>	<b>235</b>	<b>220</b>	<b>257</b>	<b>269</b>	<b>4.7%</b>	<b>18.0%</b>
<b>Nursing</b>							
M.S.N./M.P.A. in Nursing (GR)	19	18	18	11	5	-54.5%	-73.7%
Nursing (UG)	156	158	253	270	298	10.4%	91.0%
Nursing (GR)	63	66	67	71	89	25.4%	41.3%
<b>Nursing Total:</b>	<b>238</b>	<b>242</b>	<b>338</b>	<b>352</b>	<b>392</b>	<b>11.4%</b>	<b>64.7%</b>
<b>Occupational Therapy</b>							
Occupational Therapy (UG) *	22	8	0	1	0		
Occupational Therapy (GR)	34	46	61	72	79	9.7%	132.4%
<b>Occupational Therapy Total:</b>	<b>56</b>	<b>54</b>	<b>61</b>	<b>73</b>	<b>79</b>	<b>8.2%</b>	<b>41.1%</b>
<i>NAHS UG Total:</i>	<i>1,395</i>	<i>1,372</i>	<i>1,375</i>	<i>1,450</i>	<i>1,536</i>	<i>5.9%</i>	<i>10.1%</i>
<i>NAHS GR Total:</i>	<i>144</i>	<i>160</i>	<i>165</i>	<i>175</i>	<i>193</i>	<i>10.3%</i>	<i>34.0%</i>
<b>NAHS Total:</b>	<b>1,539</b>	<b>1,532</b>	<b>1,540</b>	<b>1,625</b>	<b>1,729</b>	<b>6.4%</b>	<b>12.3%</b>

\* Phasing-out programs

## Enrollment by Department and Program School of Visual and Performing Arts

	FALL 2004	FALL 2005	FALL 2006	FALL 2007	FALL 2008	1-YEAR CHANGE	5-YEAR CHANGE
<b>ENROLLMENT</b>							
<b>Design</b>							
Graphic Comm (UG)	79	68	68	62	60	-3.2%	-24.1%
Graphic Comm (GR)	22	22	31	35	24	-31.4%	9.1%
Industrial Design (UG)	34	34	29	30	49	63.3%	44.1%
Interior Design (UG)	173	157	141	132	148	12.1%	-14.5%
Visual Comm (UG)	157	166	169	166	160	-3.6%	1.9%
<b>Design Total:</b>	<b>465</b>	<b>447</b>	<b>438</b>	<b>425</b>	<b>441</b>	<b>3.8%</b>	<b>-5.2%</b>
<b>Fine Arts</b>							
Art History (UG)	22	20	18	22	19	-13.6%	-13.6%
Fine Arts (UG)	122	130	135	117	105	-10.3%	-13.9%
Fine Arts Edu (GR)	50	59	52	58	49	-15.5%	-2.0%
Studio Art (UG)	32	41	36	37	31	-16.2%	-3.1%
<b>Fine Arts Total:</b>	<b>226</b>	<b>250</b>	<b>241</b>	<b>234</b>	<b>204</b>	<b>-12.8%</b>	<b>-9.7%</b>
<b>Media &amp; Film</b>							
Communication - Broadcast (UG) *	135	134	91	51	19	-62.7%	-85.9%
Media (UG)	0	0	35	102	154	51.0%	
<b>Media &amp; Film Total:</b>	<b>135</b>	<b>134</b>	<b>126</b>	<b>153</b>	<b>173</b>	<b>13.1%</b>	<b>28.1%</b>
<b>Music</b>							
Music (UG)	28	25	25	32	39	21.9%	39.3%
Music Edu. (UG)	49	46	36	41	41	0.0%	-16.3%
<b>Music Total:</b>	<b>77</b>	<b>71</b>	<b>61</b>	<b>73</b>	<b>80</b>	<b>9.6%</b>	<b>3.9%</b>
<b>Theatre</b>							
Speech & Theatre (UG)	8	6	11	12	6	-50.0%	-25.0%
Theatre (UG)	39	44	50	59	61	3.4%	56.4%
Theatre Design & Tech. (UG)	0	0	0	2	3	50.0%	
Theatre Performance (UG)	0	0	0	6	14	133.3%	
<b>Theatre Total:</b>	<b>47</b>	<b>50</b>	<b>61</b>	<b>79</b>	<b>84</b>	<b>6.3%</b>	<b>78.7%</b>
<b>VPA Other</b>							
Liberal Studies (GR)	30	24	30	23	20	-13.0%	-33.3%
<b>VPA Other Total:</b>	<b>30</b>	<b>24</b>	<b>30</b>	<b>23</b>	<b>20</b>	<b>-13.0%</b>	<b>-33.3%</b>
<i>VPA UG Total:</i>	<i>878</i>	<i>871</i>	<i>844</i>	<i>871</i>	<i>909</i>	<i>4.4%</i>	<i>3.5%</i>
<i>VPA GR Total:</i>	<i>102</i>	<i>105</i>	<i>113</i>	<i>116</i>	<i>93</i>	<i>-19.8%</i>	<i>-8.8%</i>
<b>VPA Total:</b>	<b>980</b>	<b>976</b>	<b>957</b>	<b>987</b>	<b>1,002</b>	<b>1.5%</b>	<b>2.2%</b>

\*Phasing-out program



## Enrollment by Department and Program Nathan Weiss Graduate College

	FALL 2004	FALL 2005	FALL 2006	FALL 2007	FALL 2008	1-YEAR CHANGE	5-YEAR CHANGE
<b>ENROLLMENT</b>							
<b>Edu Leadership</b>							
EdD.Urban/Leader (GR_D)	0	0	0	0	19		
Edu Admin. (GR)	283	253	260	249	288	15.7%	1.8%
<b>Edu Leadership Total:</b>	<b>283</b>	<b>253</b>	<b>260</b>	<b>249</b>	<b>307</b>	<b>23.3%</b>	<b>8.5%</b>
<b>Grad Mgmt Studies</b>							
MBA in Global Management (GR)	0	20	42	96	103	7.3%	
MIS (GR)	39	34	34	23	11	-52.2%	-71.8%
<b>Grad Mgmt Studies Total:</b>	<b>39</b>	<b>54</b>	<b>76</b>	<b>119</b>	<b>114</b>	<b>-4.2%</b>	<b>192.3%</b>
<b>NWGC Other</b>							
Holocaust & Genocide (GR)	0	0	5	14	18	28.6%	
<b>NWGC Other Total:</b>	<b>0</b>	<b>0</b>	<b>5</b>	<b>14</b>	<b>18</b>	<b>28.6%</b>	
<b>Sci &amp; Tech Edu</b>							
Biotechnology (GR)	14	21	21	21	24	14.3%	71.4%
Science & Tech. (UG)	0	16	68	62	105	69.4%	
Science & Tech. (GR)	0	0	0	0	4		
<b>Sci &amp; Tech Edu Total:</b>	<b>14</b>	<b>37</b>	<b>89</b>	<b>83</b>	<b>133</b>	<b>60.2%</b>	<b>850.0%</b>
<i>NWGC UG Total:</i>	<i>0</i>	<i>16</i>	<i>68</i>	<i>62</i>	<i>105</i>	<i>69.4%</i>	
<i>NWGC GR_D Total:</i>	<i>0</i>	<i>0</i>	<i>0</i>	<i>0</i>	<i>19</i>		
<i>NWGC GR Total:</i>	<i>336</i>	<i>328</i>	<i>362</i>	<i>403</i>	<i>448</i>	<i>11.2%</i>	<i>33.3%</i>
<b>NWGC Total:</b>	<b>336</b>	<b>344</b>	<b>430</b>	<b>465</b>	<b>572</b>	<b>23.0%</b>	<b>70.2%</b>

## Second Majors by Program

	FALL 2004	FALL 2005	FALL 2006	FALL 2007	FALL 2008	1-YEAR CHANGE	5-YEAR CHANGE
<b>ENROLLMENT</b>							
English	137	152	140	141	191	35.5%	39.4%
Psychology	191	167	183	171	143	-16.4%	-25.1%
History	70	73	73	73	95	30.1%	35.7%
Earth Science	35	34	40	40	56	40.0%	60.0%
Spanish	68	53	41	36	41	13.9%	-39.7%
Liberal Studies in math	7	10	15	26	35	34.6%	400.0%
Math. Science	19	21	29	20	34	70.0%	78.9%
Sociology	45	34	43	34	29	-14.7%	-35.6%
Fine Arts	12	16	13	19	16	-15.8%	33.3%
Biology	13	8	5	8	12	50.0%	-7.7%
Liberal Studies in EarthSci	2	2	6	7	12	71.4%	500.0%
Communication	21	13	11	11	11	0.0%	-47.6%
Economics	15	9	10	11	11	0.0%	-26.7%
Finance	2	5	3	4	8	100.0%	300.0%
Liberal Studies in Bio	2	3	5	6	7	16.7%	250.0%
Political Science	7	10	9	6	7	16.7%	0.0%
Philosophy and Religion	1	4	1	2	4	100.0%	300.0%
Media	0	0	1	0	4		
Management Sci.	7	5	3	2	2		
Art History	1	3	2	5	1		
Criminal Justice	2	2	3	3	1		
Theatre	4	6	2	3	1		
Computer Science	4	3	2	2	1		
Educator of Indivs with Disabilities	0	0	0	2	1		
Public Admin.	3	2	0	2	1		
Physical Edu	0	0	1	1	1		
Liberal Studies in Tech	5	5	6	1	1		
Graphic Comm	0	0	0	0	1		
Chemistry	1	2	1	0	1		
Marketing	1	1	3	2	0		
Medical Tech.	0	0	0	1	0		
Music	2	2	0	1	0		
HIM	0	0	0	1	0		
Telecomm.Info.Tech.	0	0	0	1	0		
Electronics Tech.	1	0	0	0	0		
Accounting	2	0	0	0	0		
Communication - Broadcast	5	2	0	0	0		
Occupational Therapy	1	0	0	0	0		
Recreation Admin.	1	0	0	0	0		
Industrial Design	1	1	0	0	0		
Interior Design	0	0	1	0	0		
<b>Second Majors Total</b>	<b>688</b>	<b>648</b>	<b>652</b>	<b>642</b>	<b>728</b>	<b>13.4%</b>	<b>5.8%</b>

**Course FTE by Department and Academic Level**  
**College of Business and Public Administration**

	FALL 2004	FALL 2005	FALL 2006	FALL 2007	FALL 2008	1-YEAR CHANGE	5-YEAR CHANGE
<b>COURSE FTE</b>							
<b>Accounting</b>							
UG	167.6	160.9	148.7	196.7	202.7	3.1%	20.9%
GR	51.5	54.8	55.3	47.3	44.5	-5.8%	-13.6%
<b>Accounting Total:</b>	<b>219.1</b>	<b>215.6</b>	<b>203.9</b>	<b>243.9</b>	<b>247.2</b>	<b>1.3%</b>	<b>12.8%</b>
<b>Criminal Justice</b>							
UG	156.7	164.7	168.6	165.3	201.9	22.2%	28.9%
GR			4.5	8.3	3.8	-54.5%	
<b>Criminal Justice Total:</b>	<b>156.7</b>	<b>164.7</b>	<b>173.1</b>	<b>173.6</b>	<b>205.7</b>	<b>18.5%</b>	<b>31.3%</b>
<b>Economics/Finance</b>							
UG	282.8	274.3	246.8	272.6	327.6	20.2%	15.8%
GR	5.5	8.0	4.8	6.8	6.0	-11.1%	9.1%
<b>Economics/Finance Total:</b>	<b>288.3</b>	<b>282.3</b>	<b>251.5</b>	<b>279.4</b>	<b>333.6</b>	<b>19.4%</b>	<b>15.7%</b>
<b>Management</b>							
UG	340.9	321.9	272.1	342.9	388.5	13.3%	14.0%
GR	10.5	9.3	10.3	14.8	15.5	5.1%	47.6%
<b>Management Total:</b>	<b>351.4</b>	<b>331.2</b>	<b>282.3</b>	<b>357.7</b>	<b>404.0</b>	<b>12.9%</b>	<b>15.0%</b>
<b>Marketing</b>							
UG	93.8	97.1	97.3	108.8	140.4	29.1%	49.8%
GR	6.0	4.0	6.5	10.5	4.8	-54.8%	-20.8%
<b>Marketing Total:</b>	<b>99.8</b>	<b>101.1</b>	<b>103.8</b>	<b>119.3</b>	<b>145.2</b>	<b>21.8%</b>	<b>45.6%</b>
<b>Public Adm</b>							
UG	71.1	80.1	79.1	81.9	90.3	10.1%	27.0%
GR	115.3	116.5	116.3	87.3	84.0	-3.7%	-27.1%
<b>Public Adm Total:</b>	<b>186.3</b>	<b>196.6</b>	<b>195.4</b>	<b>169.2</b>	<b>174.3</b>	<b>3.0%</b>	<b>-6.5%</b>
<i>BPA UG Total:</i>	<i>1,112.8</i>	<i>1,099.0</i>	<i>1,012.6</i>	<i>1,168.3</i>	<i>1,351.4</i>	<i>15.7%</i>	<i>21.4%</i>
<i>BPA GR Total:</i>	<i>188.8</i>	<i>192.5</i>	<i>197.5</i>	<i>174.8</i>	<i>158.5</i>	<i>-9.3%</i>	<i>-16.0%</i>
<b>BPA Total:</b>	<b>1,301.5</b>	<b>1,291.5</b>	<b>1,210.1</b>	<b>1,343.0</b>	<b>1,509.9</b>	<b>12.4%</b>	<b>16.0%</b>

## Course FTE by Department and Academic Level College of Education

COURSE FTE	FALL 2004	FALL 2005	FALL 2006	FALL 2007	FALL 2008	1-YEAR CHANGE	5-YEAR CHANGE
<b>Comm Disorder/Deaf</b>							
UG	72.6	67.7	60.9	60.9	74.8	22.8%	3.1%
GR	85.5	85.1	94.5	114.3	109.3	-4.4%	27.8%
<b>Comm Disorder/Deaf Total:</b>	<b>158.1</b>	<b>152.8</b>	<b>155.4</b>	<b>175.2</b>	<b>184.1</b>	<b>5.1%</b>	<b>16.4%</b>
<b>Comm Sci/Edu Svcs</b>							
UG	97.9	106.1	99.8	121.3	116.8	-3.7%	19.3%
GR	48.8	55.1	57.0	45.8	39.3	-14.2%	-19.6%
<b>Comm Sci/Edu Svcs Total:</b>	<b>146.7</b>	<b>161.2</b>	<b>156.8</b>	<b>167.1</b>	<b>156.1</b>	<b>-6.6%</b>	<b>6.4%</b>
<b>Counselor Edu</b>							
GR	100.0	105.0	104.3	109.8	111.5	1.6%	11.5%
<b>Counselor Edu Total:</b>	<b>100.0</b>	<b>105.0</b>	<b>104.3</b>	<b>109.8</b>	<b>111.5</b>	<b>1.6%</b>	<b>11.5%</b>
<b>Early Childhd/Family</b>							
UG	143.1	140.1	157.3	171.1	182.1	6.5%	27.2%
GR	72.3	65.3	42.0	29.0	26.8	-7.8%	-63.0%
<b>Early Childhd/Family Total:</b>	<b>215.4</b>	<b>205.4</b>	<b>199.3</b>	<b>200.1</b>	<b>208.9</b>	<b>4.4%</b>	<b>-3.0%</b>
<b>EDU Other (EDUC)</b>							
UG	107.6	116.1	105.6	102.2	112.9	10.5%	4.9%
<b>EDU Other Total:</b>	<b>107.6</b>	<b>116.1</b>	<b>105.6</b>	<b>102.2</b>	<b>112.9</b>	<b>10.5%</b>	<b>4.9%</b>
<b>Elem Ed/Bil Ed &amp; Mid Sec Ed *</b>							
UG			184.1	205.7	208.8	1.5%	
GR			135.0	121.5	132.3	8.8%	
<b>Elem Ed/Bil Ed &amp; Mid Sec Ed Total:</b>			<b>319.1</b>	<b>327.2</b>	<b>341.1</b>	<b>4.2%</b>	
<b>Phys Ed/Rec/Health</b>							
UG	537.5	545.0	585.1	620.1	661.9	6.7%	23.1%
GR	8.3	10.8	9.5	12.0	11.0	-8.3%	33.3%
<b>Phys Ed/Rec/Health Total:</b>	<b>545.8</b>	<b>555.8</b>	<b>594.6</b>	<b>632.1</b>	<b>672.9</b>	<b>6.5%</b>	<b>23.3%</b>
<b>Special Edu</b>							
UG	127.3	124.1	102.5	105.8	123.5	16.7%	-2.9%
GR	113.5	129.5	130.8	141.5	155.8	10.1%	37.2%
<b>Special Edu Total:</b>	<b>240.8</b>	<b>253.6</b>	<b>233.3</b>	<b>247.3</b>	<b>279.3</b>	<b>12.9%</b>	<b>16.0%</b>
<i>EDU UG Total:</i>	<i>1,085.9</i>	<i>1,099.1</i>	<i>1,295.2</i>	<i>1,387.1</i>	<i>1,480.8</i>	<i>6.8%</i>	<i>36.4%</i>
<i>EDU GR Total:</i>	<i>428.3</i>	<i>450.8</i>	<i>573.0</i>	<i>573.8</i>	<i>585.8</i>	<i>2.1%</i>	<i>36.8%</i>
<b>EDU Total:</b>	<b>1,514.3</b>	<b>1,549.9</b>	<b>1,868.2</b>	<b>1,960.8</b>	<b>2,066.6</b>	<b>5.4%</b>	<b>36.5%</b>

\* Combined course FTE for the two split departments.

## Course FTE by Department and Academic Level College of Humanities and Social Sciences

	FALL 2004	FALL 2005	FALL 2006	FALL 2007	FALL 2008	1-YEAR CHANGE	5-YEAR CHANGE
<b>COURSE FTE</b>							
<b>Communication</b>							
UG	353.8	308.3	312.4	303.1	323.8	6.8%	-8.5%
GR	7.0	11.0	14.8	17.8	15.0	-15.5%	114.3%
<b>Communication Total:</b>	<b>360.8</b>	<b>319.3</b>	<b>327.1</b>	<b>320.9</b>	<b>338.8</b>	<b>5.6%</b>	<b>-6.1%</b>
<b>English</b>							
UG	789.8	837.8	820.9	868.9	950.2	9.4%	20.3%
GR	14.5	12.0	17.5	9.7	14.4	49.1%	-0.6%
<b>English Total:</b>	<b>804.3</b>	<b>849.8</b>	<b>838.4</b>	<b>878.6</b>	<b>964.6</b>	<b>9.8%</b>	<b>19.9%</b>
<b>Foreign Languages</b>							
UG	194.3	189.9	171.4	177.8	178.9	0.6%	-7.9%
GR	4.0	1.5	2.3	1.3	1.5	20.0%	-62.5%
<b>Foreign Languages Total:</b>	<b>198.3</b>	<b>191.4</b>	<b>173.6</b>	<b>179.0</b>	<b>180.4</b>	<b>0.8%</b>	<b>-9.0%</b>
<b>History</b>							
UG	416.8	422.3	392.1	411.6	442.1	7.4%	6.1%
GR	4.0	4.3		1.0			
<b>History Total:</b>	<b>420.8</b>	<b>426.5</b>	<b>392.1</b>	<b>412.6</b>	<b>442.1</b>	<b>7.2%</b>	<b>5.1%</b>
<b>Philosophy/Religion</b>							
UG	170.1	167.6	164.6	130.9	143.4	9.6%	-15.7%
<b>Philosophy/Religion Total:</b>	<b>170.1</b>	<b>167.6</b>	<b>164.6</b>	<b>130.9</b>	<b>143.4</b>	<b>9.6%</b>	<b>-15.7%</b>
<b>Political Science</b>							
UG	138.4	124.7	140.4	145.5	163.7	12.5%	18.3%
GR	4.8	4.5	10.8	14.0	9.0	-35.7%	89.5%
<b>Political Science Total:</b>	<b>143.1</b>	<b>129.2</b>	<b>151.2</b>	<b>159.5</b>	<b>172.7</b>	<b>8.3%</b>	<b>20.7%</b>
<b>Psychology</b>							
UG	548.9	579.3	623.8	643.3	668.5	3.9%	21.8%
GR	89.8	94.5	94.5	86.8	78.8	-9.2%	-12.3%
<b>Psychology Total:</b>	<b>638.7</b>	<b>673.8</b>	<b>718.3</b>	<b>730.0</b>	<b>748.3</b>	<b>2.5%</b>	<b>17.2%</b>
<b>Social Work</b>							
UG	61.0	56.8	57.2	73.9	88.6	19.9%	45.2%
GR	115.0	114.5	109.0	103.3	97.9	-5.2%	-14.9%
<b>Social Work Total:</b>	<b>176.0</b>	<b>171.3</b>	<b>166.2</b>	<b>177.1</b>	<b>186.5</b>	<b>5.3%</b>	<b>6.0%</b>
<b>Sociology/Anthropology</b>							
UG	355.5	347.6	354.9	377.3	376.1	-0.3%	5.8%
GR					9.3		
<b>Sociology/Anthropology Total:</b>	<b>355.5</b>	<b>347.6</b>	<b>354.9</b>	<b>377.3</b>	<b>385.4</b>	<b>2.2%</b>	<b>8.4%</b>
<i>HSS UG Total:</i>	<i>3,028.5</i>	<i>3,034.3</i>	<i>3,037.7</i>	<i>3,132.1</i>	<i>3,335.3</i>	<i>6.5%</i>	<i>10.1%</i>
<i>HSS GR Total:</i>	<i>239.0</i>	<i>242.3</i>	<i>248.8</i>	<i>233.7</i>	<i>226.8</i>	<i>-3.0%</i>	<i>-5.1%</i>
<b>HSS Total:</b>	<b>3,267.5</b>	<b>3,276.5</b>	<b>3,286.4</b>	<b>3,365.8</b>	<b>3,562.1</b>	<b>5.8%</b>	<b>9.0%</b>

## Course FTE by Department and Academic Level College of Natural, Applied, and Health Sciences

	FALL 2004	FALL 2005	FALL 2006	FALL 2007	FALL 2008	1-YEAR CHANGE	5-YEAR CHANGE
<b>COURSE FTE</b>							
<b>Biological Sciences</b>							
UG	261.9	298.8	320.6	341.1	359.7	5.4%	37.4%
<b>Biological Sciences Total:</b>	<b>261.9</b>	<b>298.8</b>	<b>320.6</b>	<b>341.1</b>	<b>359.7</b>	<b>5.4%</b>	<b>37.4%</b>
<b>Chemistry/Physics</b>							
UG	144.3	145.3	155.8	160.4	183.9	14.7%	27.5%
GR	0.8	0.3	0.5		0.8		0.0%
<b>Chemistry/Physics Total:</b>	<b>145.0</b>	<b>145.6</b>	<b>156.3</b>	<b>160.4</b>	<b>184.7</b>	<b>15.2%</b>	<b>27.4%</b>
<b>Computer Science</b>							
UG	257.3	243.2	228.8	232.2	243.3	4.8%	-5.5%
GR	4.3	5.0	2.8	1.8	1.0	-42.9%	-76.5%
<b>Computer Science Total:</b>	<b>261.6</b>	<b>248.2</b>	<b>231.6</b>	<b>233.9</b>	<b>244.3</b>	<b>4.4%</b>	<b>-6.6%</b>
<b>Geology/Meteorology</b>							
UG	159.3	157.1	166.0	165.3	173.3	4.9%	8.8%
GR							
<b>Geology/Meteorology Total:</b>	<b>159.3</b>	<b>157.1</b>	<b>166.0</b>	<b>165.3</b>	<b>173.3</b>	<b>4.9%</b>	<b>8.8%</b>
<b>Health Info Mgmt</b>							
UG	21.2	30.8	34.8	17.8			
<b>Health Info Mgmt Total:</b>	<b>21.2</b>	<b>30.8</b>	<b>34.8</b>	<b>17.8</b>			
<b>Mathematics</b>							
UG	574.6	611.6	623.9	652.8	683.4	4.7%	18.9%
GR	17.5	18.0	13.0	11.5	11.5	0.0%	-34.3%
<b>Mathematics Total:</b>	<b>592.1</b>	<b>629.6</b>	<b>636.9</b>	<b>664.3</b>	<b>694.9</b>	<b>4.6%</b>	<b>17.4%</b>
<b>Nursing</b>							
UG	39.1	44.9	71.8	70.4	84.4	19.9%	115.7%
GR	33.3	36.8	35.9	32.7	42.7	30.6%	28.3%
<b>Nursing Total:</b>	<b>72.4</b>	<b>81.8</b>	<b>107.7</b>	<b>103.0</b>	<b>127.0</b>	<b>23.3%</b>	<b>75.5%</b>
<b>Occupational Therapy</b>							
UG	8.0	2.4	1.4	1.1	6.2	450.0%	-22.7%
GR	28.8	48.4	64.8	67.3	69.3	2.8%	140.2%
<b>Occupational Therapy Total:</b>	<b>36.8</b>	<b>50.9</b>	<b>66.2</b>	<b>68.5</b>	<b>75.4</b>	<b>10.2%</b>	<b>104.8%</b>
<i>NAHS UG Total:</i>	<i>1,465.6</i>	<i>1,534.1</i>	<i>1,603.2</i>	<i>1,641.1</i>	<i>1,734.1</i>	<i>5.7%</i>	<i>18.3%</i>
<i>NAHS GR Total:</i>	<i>84.6</i>	<i>108.5</i>	<i>116.9</i>	<i>113.3</i>	<i>125.2</i>	<i>10.5%</i>	<i>48.0%</i>
<b>NAHS Total:</b>	<b>1,550.1</b>	<b>1,642.6</b>	<b>1,700.1</b>	<b>1,754.3</b>	<b>1,859.3</b>	<b>6.0%</b>	<b>19.9%</b>

## Course FTE by Department and Academic Level School of Visual and Performing Arts

COURSE FTE	FALL 2004	FALL 2005	FALL 2006	FALL 2007	FALL 2008	1-YEAR CHANGE	5-YEAR CHANGE
<b>Design</b>							
UG	178.1	188.4	183.6	175.9	190.5	8.3%	6.9%
GR	12.5	11.3	17.5	13.3	9.0	-32.1%	-28.0%
<b>Design Total:</b>	<b>190.6</b>	<b>199.7</b>	<b>201.1</b>	<b>189.1</b>	<b>199.5</b>	<b>5.5%</b>	<b>4.7%</b>
<b>Fine Arts</b>							
UG	325.8	335.5	351.3	348.3	360.1	3.4%	10.5%
GR	21.8	23.8	25.3	26.9	23.3	-13.3%	7.3%
<b>Fine Arts Total:</b>	<b>347.5</b>	<b>359.3</b>	<b>376.6</b>	<b>375.2</b>	<b>383.4</b>	<b>2.2%</b>	<b>10.3%</b>
<b>Media &amp; Film</b>							
UG		51.0	71.6	77.9	86.9	11.5%	
<b>Media &amp; Film Total:</b>		<b>51.0</b>	<b>71.6</b>	<b>77.9</b>	<b>86.9</b>	<b>11.5%</b>	
<b>Music</b>							
UG	149.3	170.9	160.2	155.3	163.1	5.1%	9.3%
GR				1.3			
<b>Music Total:</b>	<b>149.3</b>	<b>170.9</b>	<b>160.2</b>	<b>156.5</b>	<b>163.1</b>	<b>4.2%</b>	<b>9.3%</b>
<b>Theatre</b>							
UG	74.7	72.4	67.2	72.2	66.1	-8.4%	-11.5%
<b>Theatre Total:</b>	<b>74.7</b>	<b>72.4</b>	<b>67.2</b>	<b>72.2</b>	<b>66.1</b>	<b>-8.4%</b>	<b>-11.5%</b>
<b>VPA Other (MALS)</b>							
GR	5.0	4.3	5.8	3.5	4.5	28.6%	-10.0%
<b>VPA Other Total:</b>	<b>5.0</b>	<b>4.3</b>	<b>5.8</b>	<b>3.5</b>	<b>4.5</b>	<b>28.6%</b>	<b>-10.0%</b>
<i>VPA UG Total:</i>	<i>727.9</i>	<i>818.3</i>	<i>833.8</i>	<i>829.5</i>	<i>866.7</i>	<i>4.5%</i>	<i>19.1%</i>
<i>VPA GR Total:</i>	<i>39.3</i>	<i>39.3</i>	<i>48.6</i>	<i>44.9</i>	<i>36.8</i>	<i>-18.0%</i>	<i>-6.2%</i>
<b>VPA Total:</b>	<b>767.1</b>	<b>857.6</b>	<b>882.4</b>	<b>874.4</b>	<b>903.6</b>	<b>3.3%</b>	<b>17.8%</b>

## Course FTE by Department and Academic Level Nathan Weiss Graduate College

	FALL 2004	FALL 2005	FALL 2006	FALL 2007	FALL 2008	1-YEAR CHANGE	5-YEAR CHANGE
<b>COURSE FTE</b>							
<b>Edu Leadership</b>							
UG	189.5	195.4					
GR	334.8	310.8	170.5	169.3	173.5	2.5%	
<b>Edu Leadership Total:</b>	<b>524.3</b>	<b>506.2</b>	<b>170.5</b>	<b>169.3</b>	<b>173.5</b>	<b>2.5%</b>	
<b>Grad Mgmt Studies</b>							
GR	27.3	22.5	35.0	39.0	50.3	28.8%	84.4%
<b>Grad Mgmt Studies Total:</b>	<b>27.3</b>	<b>22.5</b>	<b>35.0</b>	<b>39.0</b>	<b>50.3</b>	<b>28.8%</b>	<b>84.4%</b>
<b>NWGC Other (MAHG)</b>							
UG				9.2	11.6	26.5%	
GR		2.8	6.3	8.8	9.5	8.6%	
<b>NWGC Other Total:</b>		<b>2.8</b>	<b>6.3</b>	<b>17.9</b>	<b>21.1</b>	<b>17.8%</b>	
<b>Sci &amp; Tech Edu</b>							
UG	9.0	22.1	30.8	31.8	28.0	-12.0%	211.1%
GR	17.7	22.9	21.4	22.5	27.1	20.4%	53.3%
<b>Sci &amp; Tech Edu Total:</b>	<b>26.7</b>	<b>45.0</b>	<b>52.2</b>	<b>54.3</b>	<b>55.1</b>	<b>1.4%</b>	<b>106.6%</b>
<i>NWGC UG Total:</i>	<i>198.5</i>	<i>217.5</i>	<i>30.8</i>	<i>41.0</i>	<i>39.6</i>	<i>-3.4%</i>	
<i>NWGC GR Total:</i>	<i>379.7</i>	<i>358.9</i>	<i>233.2</i>	<i>239.5</i>	<i>260.3</i>	<i>8.7%</i>	
<b>NWGC Total:</b>	<b>578.2</b>	<b>576.4</b>	<b>264.0</b>	<b>280.5</b>	<b>300.0</b>	<b>7.0%</b>	

## Course FTE by Department and Academic Level Other Courses

	FALL 2004	FALL 2005	FALL 2006	FALL 2007	FALL 2008	1-YEAR CHANGE	5-YEAR CHANGE
<b>COURSE FTE</b>							
<b>Other (GE, ID)</b>							
UG	201.3	204.9	202.8	216.4	203.6	-5.9%	1.1%
GR	11.5	8.0	7.3	9.0	9.5	5.6%	-14.4%
<b>Other Total:</b>	<b>212.8</b>	<b>212.9</b>	<b>210.1</b>	<b>225.4</b>	<b>213.1</b>	<b>-5.5%</b>	<b>1.4%</b>
<i>Other UG Total:</i>	<i>201.3</i>	<i>204.9</i>	<i>202.8</i>	<i>216.4</i>	<i>203.6</i>	<i>-5.9%</i>	<i>1.1%</i>
<i>Other GR Total:</i>	<i>11.5</i>	<i>8.0</i>	<i>7.3</i>	<i>9.0</i>	<i>9.5</i>	<i>5.6%</i>	<i>-14.4%</i>
<b>Other Total:</b>	<b>212.8</b>	<b>212.9</b>	<b>210.1</b>	<b>225.4</b>	<b>213.1</b>	<b>-0.8%</b>	<b>1.4%</b>



## *Degrees Conferred*

Page 24 At-a-Glance

### Degrees Conferred by Department and Program

Page 26 College of Business *and* Public Administration

Page 27 College of Education

Page 28 College of Humanities & Social Sciences

Page 29 College of Natural, Applied, & Health Sciences

Page 30 School of Visual *and* Performing Arts

Page 31 Nathan Weiss Graduate College

## Degrees Conferred, Fiscal Year 2007 - 2008

DEGREE LEVEL	TOTAL		BACHELOR'S		MASTER'S	
	No.	%	No.	%	No.	%
Bachelor's	1,908	73.5%	1,908	100.0%		
Master's	688	26.5%			688	100.0%
<b>GENDER</b>						
Male	825	31.8%	668	35.0%	157	22.8%
Female	1,771	68.2%	1,240	65.0%	531	77.2%
<b>RACE / ETHNICITY</b>						
Black	503	19.4%	364	19.1%	139	20.2%
Hispanic	444	17.1%	367	19.2%	77	11.2%
Asian	181	7.0%	147	7.7%	34	4.9%
White	1,360	52.4%	946	49.6%	414	60.2%
Unknown	108	4.2%	84	4.4%	24	3.5%
<b>COLLEGE</b>						
BPA	605	23.3%	519	27.2%	86	12.5%
EDU	621	23.9%	364	19.1%	257	37.4%
HSS	701	27.0%	593	31.1%	108	15.7%
NAHS	302	11.6%	240	12.6%	62	9.0%
NWGC	139	5.4%	10	0.5%	129	18.8%
VPA	228	8.8%	182	9.5%	46	6.7%

\* Fiscal Year includes degrees conferred between July 1 and June 30.

### Top 10 Bachelor's Degrees Conferred

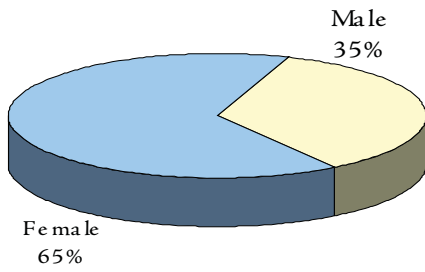
Psychology	205
Management Science	194
Elementary Education	106
Early Childhood Edu.	101
Accounting	92
History	89
Criminal Justice	81
English	74
Biology	71
Marketing	70

### Top 10 Master's Degrees Conferred

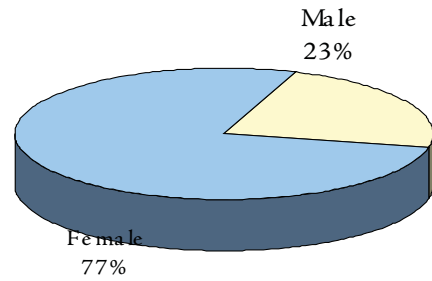
Educational Administration	91
Instruction & Curriculum	70
Special Education	48
Public Administration	46
Counselor Education	46
Social Work	41
Accounting	40
Speech Language Pathology	29
Reading Specialization	27
Nursing	27

Additional information is available online at <http://ir.kean.edu>.

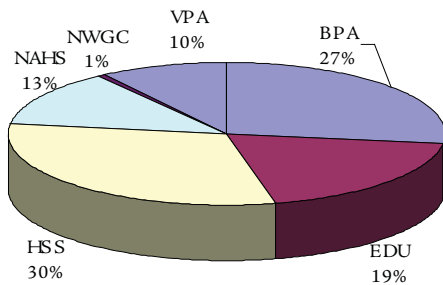
**BACHELOR'S DEGREES  
BY GENDER**



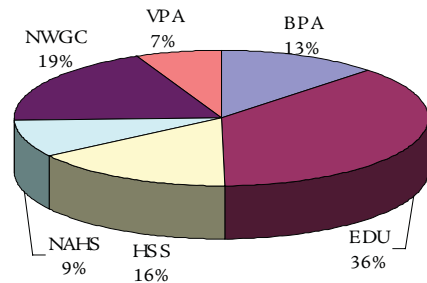
**MASTER'S DEGREES  
BY GENDER**



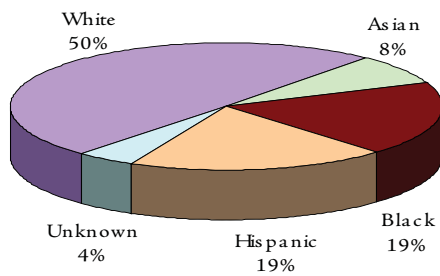
**BACHELOR'S DEGREES  
BY COLLEGE**



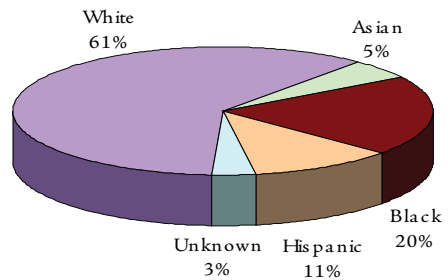
**MASTER'S DEGREES  
BY COLLEGE**



**BACHELOR'S DEGREES  
BY ETHNICITY**



**MASTER'S DEGREES  
BY ETHNICITY**



## Degrees Conferred by Department and Program College of Business and Public Administration

	FISCAL YR 2003-04	FISCAL YR 2004-05	FISCAL YR 2005-06	FISCAL YR 2006-07	FISCAL YR 2007-08	1-YEAR CHANGE	5-YEAR CHANGE
<b>DEGREES CONFERRED</b>							
<b>Accounting</b>							
Accounting (UG)	99	111	114	103	92	-10.7%	-7.1%
Accounting (GR)	29	37	50	48	40	-16.7%	37.9%
<b>Accounting Total:</b>	<b>128</b>	<b>148</b>	<b>164</b>	<b>151</b>	<b>132</b>	<b>-12.6%</b>	<b>3.1%</b>
<b>Criminal Justice</b>							
Criminal Justice (UG)	76	70	81	75	81	8.0%	6.6%
<b>Criminal Justice Total:</b>	<b>76</b>	<b>70</b>	<b>81</b>	<b>75</b>	<b>81</b>	<b>8.0%</b>	<b>6.6%</b>
<b>Economics/Finance</b>							
Economics (UG)	14	18	16	21	13	-38.1%	-7.1%
Finance (UG)	61	61	64	42	48	14.3%	-21.3%
<b>Economics/Finance Total:</b>	<b>75</b>	<b>79</b>	<b>80</b>	<b>63</b>	<b>61</b>	<b>-3.2%</b>	<b>-18.7%</b>
<b>Management</b>							
Management Sci. (UG)	213	188	210	187	194	3.7%	-8.9%
<b>Management Total:</b>	<b>213</b>	<b>188</b>	<b>210</b>	<b>187</b>	<b>194</b>	<b>3.7%</b>	<b>-8.9%</b>
<b>Marketing</b>							
Marketing (UG)	68	78	56	73	70	-4.1%	2.9%
<b>Marketing Total:</b>	<b>68</b>	<b>78</b>	<b>56</b>	<b>73</b>	<b>70</b>	<b>-4.1%</b>	<b>2.9%</b>
<b>Public Adm</b>							
Public Admin. (UG)	21	26	28	39	21	-46.2%	0.0%
Public Admin. (GR)	66	51	59	53	46	-13.2%	-30.3%
<b>Public Adm Total:</b>	<b>87</b>	<b>77</b>	<b>87</b>	<b>92</b>	<b>67</b>	<b>-27.2%</b>	<b>-23.0%</b>
<i>BPA UG Total:</i>	<i>552</i>	<i>552</i>	<i>569</i>	<i>540</i>	<i>519</i>	<i>-3.9%</i>	<i>-6.0%</i>
<i>BPA GR Total:</i>	<i>95</i>	<i>88</i>	<i>109</i>	<i>101</i>	<i>86</i>	<i>-14.9%</i>	<i>-9.5%</i>
<b>BPA Total:</b>	<b>647</b>	<b>640</b>	<b>678</b>	<b>641</b>	<b>605</b>	<b>-5.6%</b>	<b>-6.5%</b>

## Degrees Conferred by Department and Program College of Education

Degrees Conferred

	FISCAL YR 2003-04	FISCAL YR 2004-05	FISCAL YR 2005-06	FISCAL YR 2006-07	FISCAL YR 2007-08	1-YEAR CHANGE	5-YEAR CHANGE
<b>DEGREES CONFERRED</b>							
<b>Comm Disorder/Deaf</b>							
Speech Lang. Pathology (GR)	33	50	30	37	29	-21.6%	-12.1%
Speech, Lang Hear. Sci. (UG)	26	36	26	34	37	8.8%	42.3%
<b>Comm Disorder/Deaf Total:</b>	<b>59</b>	<b>86</b>	<b>56</b>	<b>71</b>	<b>66</b>	<b>-7.0%</b>	<b>11.9%</b>
<b>Counselor Edu</b>							
Counselor Edu (GR)	31	32	44	41	46	12.2%	48.4%
<b>Counselor Edu Total:</b>	<b>31</b>	<b>32</b>	<b>44</b>	<b>41</b>	<b>46</b>	<b>12.2%</b>	<b>48.4%</b>
<b>Early Childhd/Family</b>							
Early Childhood Edu. (UG)	102	109	99	99	101	2.0%	-1.0%
Early Childhood Edu. (GR)	13	33	27	19	19	0.0%	46.2%
<b>Early Childhd/Family Total:</b>	<b>115</b>	<b>142</b>	<b>126</b>	<b>118</b>	<b>120</b>	<b>1.7%</b>	<b>4.3%</b>
<b>Elem Ed/Bil Ed</b>							
Elementary Edu (UG)					23		
Instruction & Curriculum (GR)	4	11	15	11	17	54.6%	325%
<b>Elem Ed/Bil Ed Total:</b>	<b>4</b>	<b>11</b>	<b>15</b>	<b>11</b>	<b>40</b>	<b>264.0%</b>	<b>900.0%</b>
<b>Mid Sec Ed</b>							
Elem/Mid/Sec Edu (UG)	92	123	109	139	83	-40.3%	-9.8%
Instruction & Curriculum - MSE (GR)	59	62	58	50	53	6.0%	-10.2%
<b>Mid Sec Ed Total:</b>	<b>151</b>	<b>185</b>	<b>167</b>	<b>189</b>	<b>136</b>	<b>-9.9%</b>	<b>-28.0%</b>
<b>Phys Ed/Rec/Health</b>							
Athletic Training (UG)	0	0	0	3	5	66.7%	
Exercise Science (GR)	1	5	6	2	3	50.0%	200.0%
Physical Edu (UG)	51	54	60	57	60	5.3%	17.6%
Recreation Admin. (UG)	21	24	14	23	18	-21.7%	-14.3%
<b>Phys Ed/Rec/Health Total:</b>	<b>73</b>	<b>83</b>	<b>80</b>	<b>85</b>	<b>86</b>	<b>1.2%</b>	<b>17.8%</b>
<b>Special Edu</b>							
Educator of Indivs with Disabilities (UG)	60	61	57	54	37	-31.5%	-38.3%
Special Edu (GR)	38	41	50	61	48	-21.3%	26.3%
<b>Special Edu Total:</b>	<b>98</b>	<b>102</b>	<b>107</b>	<b>115</b>	<b>85</b>	<b>-26.1%</b>	<b>-13.3%</b>
<i>EDU UG Total:</i>	<i>352</i>	<i>407</i>	<i>365</i>	<i>409</i>	<i>364</i>	<i>-11.0%</i>	<i>3.4%</i>
<i>EDU GR Total:</i>	<i>207</i>	<i>250</i>	<i>264</i>	<i>257</i>	<i>257</i>	<i>0.0%</i>	<i>24.2%</i>
<b>EDU Total:</b>	<b>559</b>	<b>657</b>	<b>629</b>	<b>666</b>	<b>621</b>	<b>-6.8%</b>	<b>11.1%</b>

## Degrees Conferred by Department and Program College of Humanities and Social Sciences

	FISCAL YR 2003-04	FISCAL YR 2004-05	FISCAL YR 2005-06	FISCAL YR 2006-07	FISCAL YR 2007-08	1-YEAR CHANGE	5-YEAR CHANGE
<b>DEGREES CONFERRED</b>							
<b>Communication</b>							
Communication (UG)	28	47	44	42	46	9.5%	64.3%
Communication Studies (GR)	0	6	1	9	5	-44.4%	
<b>Communication Total:</b>	<b>28</b>	<b>53</b>	<b>45</b>	<b>51</b>	<b>51</b>	<b>0.0%</b>	<b>82.1%</b>
<b>English</b>							
English (UG)	57	45	63	56	74	32.1%	29.8%
<b>English Total:</b>	<b>57</b>	<b>45</b>	<b>63</b>	<b>56</b>	<b>74</b>	<b>32.1%</b>	<b>29.8%</b>
<b>Foreign Languages</b>							
Spanish (UG)	42	39	50	41	70	70.7%	66.7%
<b>Foreign Languages Total:</b>	<b>42</b>	<b>39</b>	<b>50</b>	<b>41</b>	<b>70</b>	<b>70.7%</b>	<b>66.7%</b>
<b>History</b>							
History (UG)	47	56	57	83	89	7.2%	89.4%
<b>History Total:</b>	<b>47</b>	<b>56</b>	<b>57</b>	<b>83</b>	<b>89</b>	<b>7.2%</b>	<b>89.4%</b>
<b>Political Science</b>							
Political Science (UG)	33	18	34	31	26	-16.1%	-21.2%
Political Science (GR)	0	1	3	3	7	133.3%	
<b>Political Science Total:</b>	<b>33</b>	<b>19</b>	<b>37</b>	<b>34</b>	<b>33</b>	<b>-2.9%</b>	<b>0.0%</b>
<b>Psychology</b>							
Behavioral Sci (GR)	24	41	25	15	24	60.0%	0.0%
Edu Psych (GR)	12	8	22	5	14	180.0%	16.7%
Marri & Fam Therapy (GR)	3	0	4	4	8	100.0%	166.7%
Psych Rehab (UG)	8	7	11	10	7	-30.0%	-12.5%
Psychology (UG)	132	150	178	200	205	2.5%	55.3%
School Psychology (GR)	8	2	7	12	9	-25.0%	12.5%
<b>Psychology Total:</b>	<b>187</b>	<b>208</b>	<b>247</b>	<b>246</b>	<b>267</b>	<b>8.5%</b>	<b>42.8%</b>
<b>Social Work</b>							
Social Work (UG)	36	44	30	39	31	-20.5%	-13.9%
Social Work (GR)	60	53	54	46	41	-10.9%	-31.7%
<b>Social Work Total:</b>	<b>96</b>	<b>97</b>	<b>84</b>	<b>85</b>	<b>72</b>	<b>-15.3%</b>	<b>-25.0%</b>
<b>Sociology/Anthropology</b>							
Sociology (UG)	31	45	56	45	44	-2.2%	41.9%
<b>Sociology/Anthropology Total:</b>	<b>31</b>	<b>45</b>	<b>56</b>	<b>45</b>	<b>44</b>	<b>-2.2%</b>	<b>41.9%</b>
<i>HSS UG Total:</i>	<i>416</i>	<i>455</i>	<i>525</i>	<i>551</i>	<i>593</i>	<i>7.6%</i>	<i>42.5%</i>
<i>HSS GR Total:</i>	<i>107</i>	<i>111</i>	<i>116</i>	<i>94</i>	<i>108</i>	<i>14.9%</i>	<i>0.9%</i>
<b>HSS Total:</b>	<b>523</b>	<b>566</b>	<b>641</b>	<b>645</b>	<b>701</b>	<b>8.7%</b>	<b>34.0%</b>

## Degrees Conferred by Department and Program College of Natural, Applied, and Health Sciences

Degrees Conferred

	FISCAL YR 2003-04	FISCAL YR 2004-05	FISCAL YR 2005-06	FISCAL YR 2006-07	FISCAL YR 2007-08	1-YEAR CHANGE	5-YEAR CHANGE
<b>DEGREES CONFERRED</b>							
<b>Biological Sciences</b>							
Biology (UG)	52	44	67	69	71	2.9%	36.5%
Medical Tech. (UG)	6	5	3	6	4	-33.3%	-33.3%
<b>Biological Sciences Total:</b>	<b>58</b>	<b>49</b>	<b>70</b>	<b>75</b>	<b>75</b>	<b>0.0%</b>	<b>29.3%</b>
<b>Chemistry/Physics</b>							
Chemistry (UG)	7	9	14	12	10	-16.7%	42.9%
<b>Chemistry/Physics Total:</b>	<b>7</b>	<b>9</b>	<b>14</b>	<b>12</b>	<b>10</b>	<b>-16.7%</b>	<b>42.9%</b>
<b>Computer Science</b>							
Comp.Integrated Design & Mfg. Tech.(UG) *	0	0	4	3	1		
Computer Science (UG)	71	56	41	29	22	-24.1%	-69.0%
Electronics Tech. (UG)	15	9	3	7	4	-42.9%	-73.3%
Tech.Edu. (UG) *	1	0	0	1	0		
Telecomm.Info.Tech. (UG)	0	3	6	12	5	-58.3%	
<b>Computer Science Total:</b>	<b>87</b>	<b>68</b>	<b>54</b>	<b>52</b>	<b>32</b>	<b>-38.5%</b>	<b>-63.2%</b>
<b>Geology/Meteorology</b>							
Earth Science (UG)	11	7	10	18	16	-11.1%	45.5%
<b>Geology/Meteorology Total:</b>	<b>11</b>	<b>7</b>	<b>10</b>	<b>18</b>	<b>16</b>	<b>-11.1%</b>	<b>45.5%</b>
<b>Health Info Mgmt</b>							
HIM (UG)	9	6	17	15	22	46.7%	144.4%
<b>Health Info Mgmt Total:</b>	<b>9</b>	<b>6</b>	<b>17</b>	<b>15</b>	<b>22</b>	<b>46.7%</b>	<b>144.4%</b>
<b>Mathematics</b>							
Comp/Stat/Math. (GR)	3	3	2	6	2	-66.7%	-33.3%
Math. Edu. (GR)	4	2	6	3	5	66.7%	25.0%
Math. Science (UG)	26	34	29	33	26	-21.2%	0.0%
<b>Mathematics Total:</b>	<b>33</b>	<b>39</b>	<b>37</b>	<b>42</b>	<b>33</b>	<b>-21.4%</b>	<b>0.0%</b>
<b>Nursing</b>							
M.S.N./M.P.A. in Nursing (GR)	4	4	5	5	10	100.0%	150.0%
Nursing (UG)	54	56	35	33	59	78.8%	9.3%
Nursing (GR)	24	20	26	13	27	107.7%	12.5%
<b>Nursing Total:</b>	<b>82</b>	<b>80</b>	<b>66</b>	<b>51</b>	<b>96</b>	<b>88.2%</b>	<b>17.1%</b>
<b>Occupational Therapy</b>							
Occupational Therapy (UG) *	17	14	6	1	0		
Occupational Therapy (GR)	1	10	10	12	18	50.0%	1700.0%
<b>Occupational Therapy Total:</b>	<b>18</b>	<b>24</b>	<b>16</b>	<b>13</b>	<b>18</b>	<b>38.5%</b>	<b>0.0%</b>
<i>NAHS UG Total:</i>	<i>269</i>	<i>243</i>	<i>235</i>	<i>239</i>	<i>240</i>	<i>0.4%</i>	<i>-10.8%</i>
<i>NAHS GR Total:</i>	<i>36</i>	<i>39</i>	<i>49</i>	<i>39</i>	<i>62</i>	<i>59.0%</i>	<i>72.2%</i>
<b>NAHS Total:</b>	<b>305</b>	<b>282</b>	<b>284</b>	<b>278</b>	<b>302</b>	<b>8.6%</b>	<b>-1.0%</b>

\* Phasing-out programs

## Degrees Conferred by Department and Program School of Visual and Performing Arts

	FISCAL YR 2003-04	FISCAL YR 2004-05	FISCAL YR 2005-06	FISCAL YR 2006-07	FISCAL YR 2007-08	1-YEAR CHANGE	5-YEAR CHANGE
<b>DEGREES CONFERRED</b>							
<b>Design</b>							
Graphic Comm (UG)	14	12	15	14	20	42.9%	42.9%
Graphic Comm (GR)	5	16	6	11	18	63.6%	260.0%
Industrial Design (UG)	0	5	5	9	5	-44.4%	
Interior Design (UG)	15	30	33	37	24	-35.1%	60.0%
Visual Comm (UG)	21	32	26	28	38	35.7%	81.0%
<b>Design Total:</b>	<b>55</b>	<b>95</b>	<b>85</b>	<b>99</b>	<b>105</b>	<b>6.1%</b>	<b>90.9%</b>
<b>Fine Arts</b>							
Art History (UG)	2	4	7	6	4	-33.3%	100.0%
Fine Arts (UG)	8	11	20	29	25	-13.8%	212.5%
Fine Arts Edu (GR)	10	13	15	19	22	15.8%	120.0%
Studio Art (UG)	8	3	5	6	11	83.3%	37.5%
<b>Fine Arts Total:</b>	<b>28</b>	<b>31</b>	<b>47</b>	<b>60</b>	<b>62</b>	<b>3.3%</b>	<b>121.4%</b>
<b>Media &amp; Film</b>							
Communication - Broadcast (UG) *	24	37	38	25	2	-92.0%	-91.7%
Media (UG)	0	0	1	8	33	312.5%	
<b>Media &amp; Film Total:</b>	<b>24</b>	<b>37</b>	<b>39</b>	<b>33</b>	<b>35</b>	<b>6.1%</b>	<b>45.8%</b>
<b>Music</b>							
Music (UG)	0	2	6	4	5	25.0%	
Music Edu. (UG)	3	6	0	3	2	-33.3%	-33.3%
<b>Music Total:</b>	<b>3</b>	<b>8</b>	<b>6</b>	<b>7</b>	<b>7</b>	<b>0.0%</b>	<b>133.3%</b>
<b>Theatre</b>							
Speech & Theatre (UG)	0	1	0	0	2		
Theatre (UG)	4	2	10	4	7	75.0%	75.0%
Theatre Design & Tech. (UG)	0	0	0	0	2		
Theatre Performance (UG)	0	0	0	0	2		
<b>Theatre Total:</b>	<b>4</b>	<b>3</b>	<b>10</b>	<b>4</b>	<b>13</b>	<b>225.0%</b>	<b>225.0%</b>
<b>VPA Other</b>							
Liberal Studies (GR)	4	8	8	5	6	20.0%	50.0%
<b>VPA Other Total:</b>	<b>4</b>	<b>8</b>	<b>8</b>	<b>5</b>	<b>6</b>	<b>20.0%</b>	<b>50.0%</b>
<i>VPA UG Total:</i>	<i>99</i>	<i>145</i>	<i>166</i>	<i>173</i>	<i>182</i>	<i>5.2%</i>	<i>83.8%</i>
<i>VPA GR Total:</i>	<i>19</i>	<i>37</i>	<i>29</i>	<i>35</i>	<i>46</i>	<i>31.4%</i>	<i>142.1%</i>
<b>VPA Total:</b>	<b>118</b>	<b>182</b>	<b>195</b>	<b>208</b>	<b>228</b>	<b>9.6%</b>	<b>93.2%</b>

\* Phasing-out programs



## Degrees Conferred by Department and Program Nathan Weiss Graduate College

Degrees Conferred

	FISCAL YR 2003-04	FISCAL YR 2004-05	FISCAL YR 2005-06	FISCAL YR 2006-07	FISCAL YR 2007-08	1-YEAR CHANGE	5-YEAR CHANGE
<b>DEGREES CONFERRED</b>							
<b>Edu Leadership</b>							
Edu Admin. (GR)	97	92	85	96	91	-5.2%	-6.2%
<b>Edu Leadership Total:</b>	<b>97</b>	<b>92</b>	<b>85</b>	<b>96</b>	<b>91</b>	<b>-5.2%</b>	<b>-6.2%</b>
<b>Grad Mgmt Studies</b>							
MBA in Global Management (GR)	0	0	0	3	17	466.7%	
MIS (GR)	30	17	21	10	16	60.0%	-46.7%
<b>Grad Mgmt Studies Total:</b>	<b>30</b>	<b>17</b>	<b>21</b>	<b>13</b>	<b>33</b>	<b>153.8%</b>	<b>10.0%</b>
<b>Sci &amp; Tech Edu</b>							
Biotechnology (GR)	4	3	8	8	4	-50.0%	0.0%
Science & Tech. (UG)	0	0	0	0	10		
<b>Sci &amp; Tech Edu Total:</b>	<b>4</b>	<b>3</b>	<b>8</b>	<b>8</b>	<b>14</b>	<b>75.0%</b>	<b>250.0%</b>
<i>NWGC UG Total:</i>	<i>0</i>	<i>0</i>	<i>0</i>	<i>0</i>	<i>10</i>		
<i>NWGC GR Total:</i>	<i>131</i>	<i>112</i>	<i>114</i>	<i>117</i>	<i>129</i>	<i>10.3%</i>	<i>-1.5%</i>
<b>NWGC Total:</b>	<b>131</b>	<b>112</b>	<b>114</b>	<b>117</b>	<b>139</b>	<b>18.8%</b>	<b>6.1%</b>



# Employees

## *Employees*

Page 34 At-a-Glance

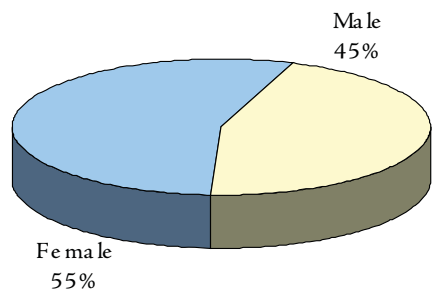
## Fall 2008 Employee Demographics

	TOTAL		FACULTY		STAFF	
	TOTAL	%	#	%	#	%
TOTAL FULL-TIME	1,163	100.0%	368	100.0%	795	100.0%
<b>GENDER</b>						
Male	528	45.4%	201	54.6%	327	41.1%
Female	635	54.6%	167	45.4%	468	58.9%
<b>RACE / ETHNICITY</b>						
Black	236	20.3%	38	10.3%	198	24.9%
Hispanic	212	18.2%	29	7.9%	183	23.0%
Asian	84	7.2%	40	10.9%	44	5.5%
White	621	53.4%	259	70.4%	362	45.5%
Unknown	8	0.7%	2	0.5%	6	0.8%
<b>EMPLOYEE GROUP</b>						
Faculty	368	31.6%	368	100.0%		
Administrative & Managerial	165	14.2%			165	20.8%
Professional	200	17.2%			200	25.2%
Clerk & Secretarial	156	13.4%			156	19.6%
Technical & Paraprofessional	78	6.7%			78	9.8%
Service Maintenance	153	13.2%			153	19.2%
Skilled Crafts	43	3.7%			43	5.4%
<b>AGE</b>						
< 30	94	8.1%	1	0.3%	93	11.7%
30 - 39	202	17.4%	47	12.8%	155	19.5%
40 - 49	260	22.4%	67	18.2%	193	24.3%
50 - 59	334	28.7%	100	27.2%	234	29.4%
60 - 69	224	19.3%	123	33.4%	101	12.7%
70 +	49	4.2%	30	8.2%	19	2.4%
Average Age	49		66		56	
PART TIME EMPLOYEES	47		20		27	
ADJUNCT FACULTY	896		896			

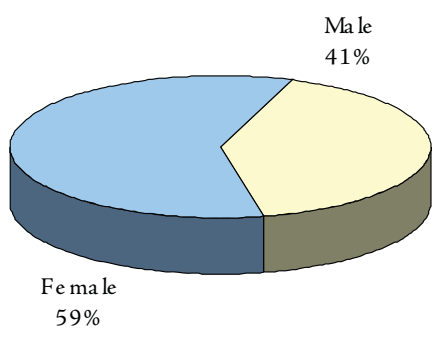
\* Numbers represent full-time faculty and staff only, unless otherwise noted.

Additional information is available online at <http://ir.kean.edu>.

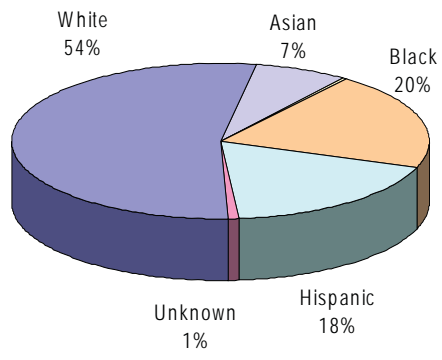
**FULL-TIME EMPLOYEES  
BY GENDER**



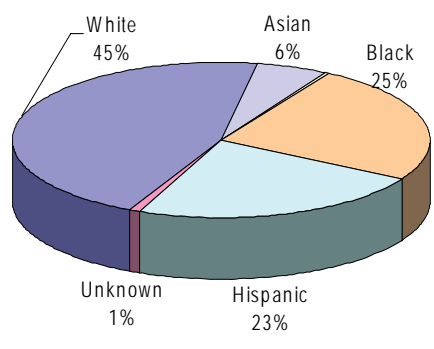
**FULL-TIME STAFF  
BY GENDER**



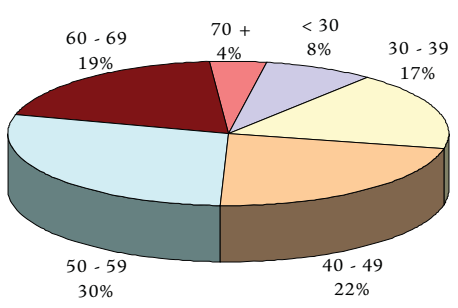
**FULL-TIME EMPLOYEES  
BY RACE / ETHNICITY**



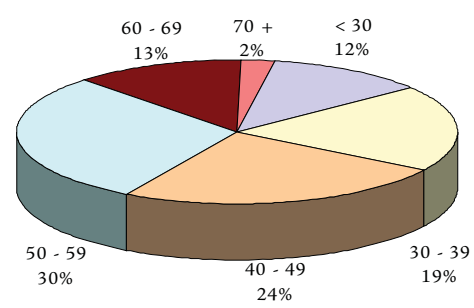
**FULL-TIME STAFF  
BY RACE / ETHNICITY**



**FULL-TIME EMPLOYEES  
BY AGE GROUP**



**FULL-TIME STAFF  
BY AGE GROUP**



The charts for full-time faculty are located in the “Faculty” section.



## *Faculty*

Page 38 At-a-Glance

Page 40 Faculty Trends

### Full-Time Faculty by Department

Page 42 College of Business *and* Public Administration

Page 42 College of Education

Page 43 College of Humanities *and* Social Sciences

Page 43 College of Natural, Applied, *and* Health Sciences

Page 44 School of Visual *and* Performing Arts

Page 44 Nathan Weiss Graduate College

Page 45 Distribution of Full-Time Faculty by Age

## Fall 2008 Faculty Demographics

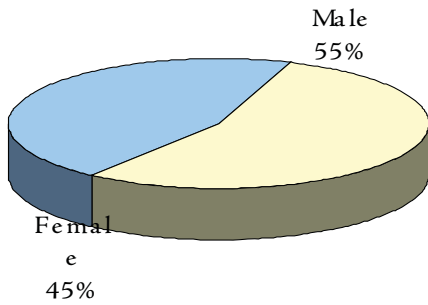
	UNIVERSITY		COLLEGES					
	TOTAL	%	BPA	EDU	HSS	NAHS	NWGC	VPA
TOTAL FULL-TIME	368	100.0%	49	73	106	78	16	46
<b>GENDER</b>								
Male	201	54.6%	33	26	55	48	12	27
Female	167	45.4%	16	47	51	30	4	19
<b>RACE / ETHNICITY</b>								
Black	38	10.3%	6	8	14	4	3	3
Hispanic	29	7.9%	6	8	9	3	1	2
Asian	40	10.9%	8	2	8	18	2	2
White	259	70.4%	29	55	74	52	10	39
Unknown	2	0.5%	0	0	1	1	0	0
<b>TENURE STATUS</b>								
Tenured	264	71.7%	32	54	84	57	4	33
Tenure Track	89	24.2%	15	14	17	20	11	12
Not on Tenure Track	15	4.1%	2	5	5	1	1	1
<b>RANK</b>								
Professor	138	37.5%	16	26	48	32	1	15
Associate Professor	85	23.1%	14	18	17	15	6	15
Assistant Professor	137	37.2%	17	27	37	31	9	16
Instructor	8	2.2%	2	2	4	0	0	0
<b>EDUCATION</b>								
<b>Highest Degree</b>								
Doctorate	310	84.2%	39	66	101	67	16	21
Master's	58	15.8%	10	7	5	11	0	25
Terminal Degree in Field	329	89.4%	42	67	102	67	16	35
<b>AGE</b>								
Average Age	55		53	59	57	52	50	51
Faculty >= 60	153	41.6%	19	46	48	24	4	12
PART-TIME FACULTY	20		0	19	1	0	0	0
ADJUNCT FACULTY	896							

\* Numbers represent full-time faculty only, unless otherwise noted.

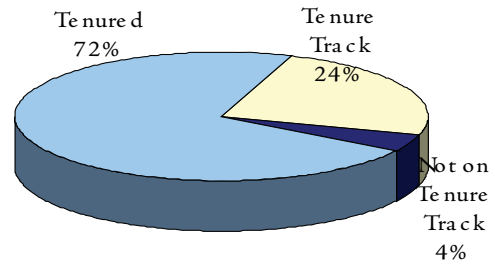
Additional information is available online at <http://ir.kean.edu>.



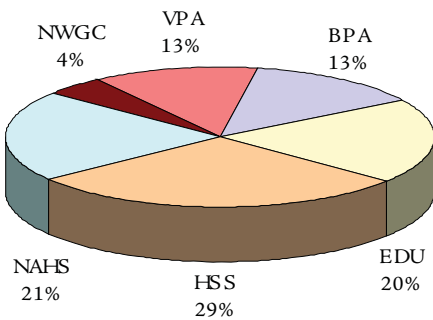
**FULL-TIME FACULTY  
BY GENDER**



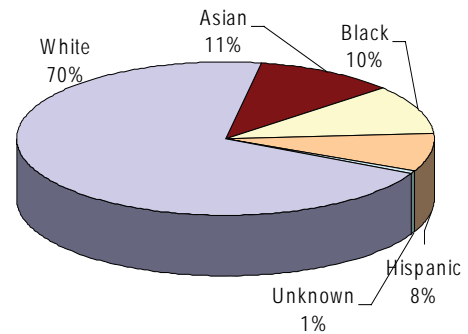
**FULL-TIME FACULTY  
BY TENURE STATUS**



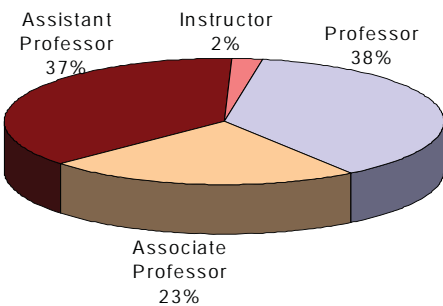
**FULL-TIME FACULTY  
BY COLLEGE**



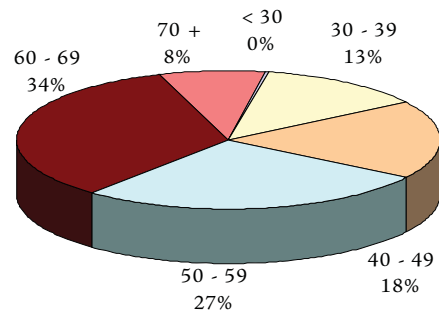
**FULL-TIME FACULTY  
BY RACE / ETHNICITY**



**FULL-TIME FACULTY  
BY RANK**



**FULL-TIME FACULTY  
BY AGE GROUP**

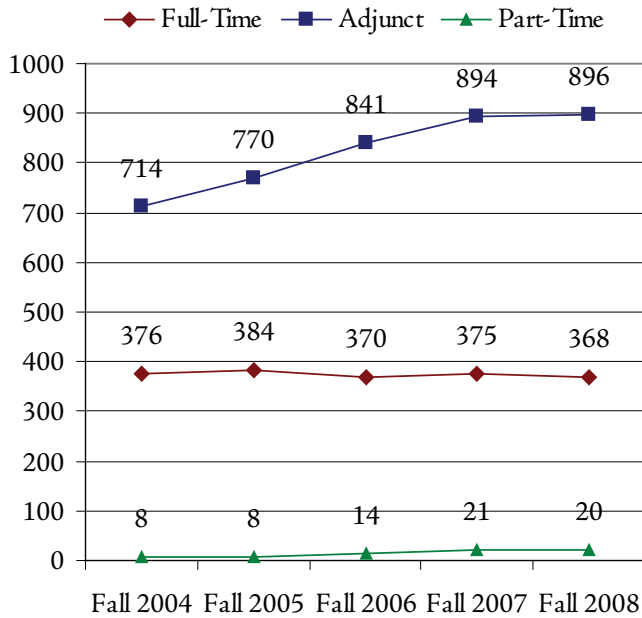


## Faculty Trends (Fall 2004 - Fall 2008)

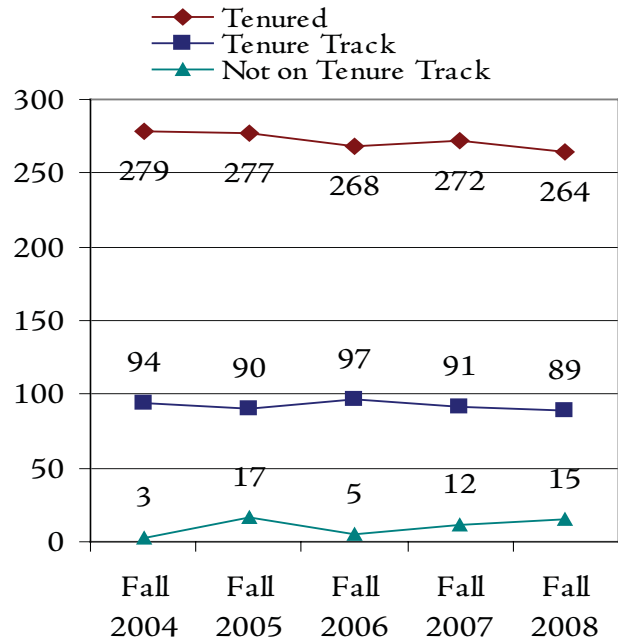
	FALL 2004	FALL 2005	Fall 2006	Fall 2007	Fall 2008	1-YEAR CHANGE	5-YEAR CHANGE
TOTAL FULL=TIME	376	384	370	375	368	-1.9%	-2.1%
<b>GENDER</b>							
Male	205	208	199	199	201	1.0%	-2.0%
Female	171	176	171	176	167	-5.1%	-2.3%
<b>RACE / ETHNICITY</b>							
Black	38	41	41	40	38	-5.0%	0.0%
Hispanic	26	30	31	30	29	-3.3%	11.5%
Asian	32	28	28	38	40	5.3%	25.0%
White	277	282	268	264	259	-1.9%	-6.5%
Unknown	3	3	2	3	2	-33.3%	-33.3%
<b>TENURE STATUS</b>							
Tenured	279	277	268	272	264	-2.9%	-5.4%
Tenure Track	94	90	97	91	89	-2.2%	-5.3%
Not on Tenure Track	3	17	5	12	15	25.0%	400.0%
<b>RANK</b>							
Professor	148	147	144	138	138	0.0%	-6.8%
Associate Professor	97	98	93	90	85	-5.6%	-12.4%
Assistant Professor	131	136	129	143	137	-4.2%	4.6%
Instructor	0	3	4	4	8	100.0%	
<b>EDUCATION</b>							
<b>Highest Degree</b>							
Doctorate	314	318	313	318	310	-2.5%	-1.3%
Master's	61	64	57	57	58	1.8%	-4.9%
Bachelor's	1	1	0	0	0		
Unknown	0	1	0	0	0		
Terminal Degree in Field	340	341	336	338	329	-2.7%	-3.2%
<b>AGE</b>							
Average Age	54.32	54.68	55.03	54.42	55.22		
Faculty >= 60	129	139	146	147	153	4.1%	18.6%
PART-TIME FACULTY	8	8	14	21	20	-4.8%	150.0%
ADJUNCT FACULTY	714	770	841	894	896	0.2%	25.5%

\* Numbers represent full-time faculty only, unless otherwise noted.

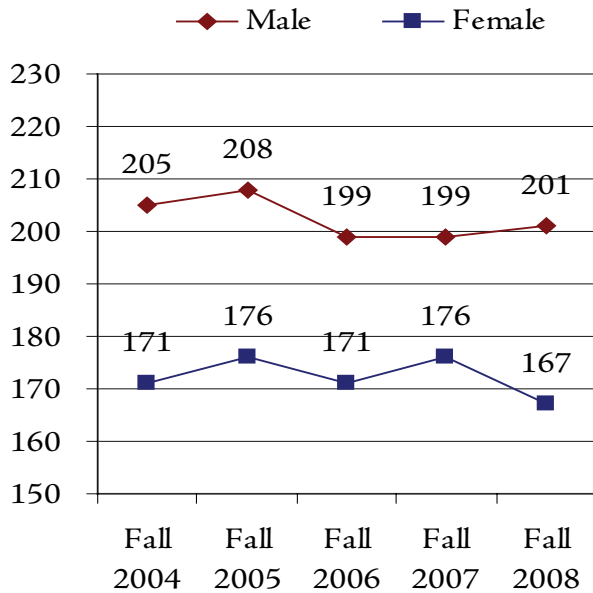
### FACULTY COUNT FALL 2004 - FALL 2008



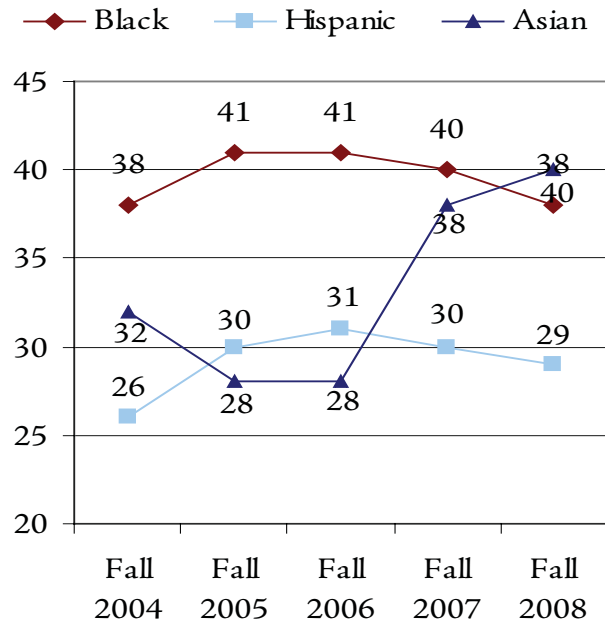
### TENURE STATUS FALL 2004 - FALL 2008



### GENDER FALL 2004 - FALL 2008



### MINORITY FACULTY COUNT FALL 2004 - FALL 2008



### Full-Time Faculty by Department College of Business and Public Administration

	FALL 2004	FALL 2005	FALL 2006	FALL 2007	FALL 2008	1-YEAR CHANGE	5-YEAR CHANGE
<b>NUMBER OF FACULTY</b>							
Accounting	9	9	9	8	8	0.0%	-11.1%
Economics/Finance	10	10	10	11	11	0.0%	10.0%
Management	12	13	10	12	11	-8.3%	-8.3%
Marketing	5	6	5	5	5	0.0%	0.0%
Public Adm	8	7	7	7	8	14.3%	0.0%
Criminal Justice	4	5	5	6	6	0.0%	50.0%
<b>BPA Faculty Total:</b>	<b>48</b>	<b>50</b>	<b>46</b>	<b>49</b>	<b>49</b>	<b>0.0%</b>	<b>2.1%</b>

### Full-Time Faculty by Department College of Education

	FALL 2004	FALL 2005	FALL 2006	FALL 2007	FALL 2008	1-YEAR CHANGE	5-YEAR CHANGE
<b>NUMBER OF FACULTY</b>							
Comm Disorder/Deaf	9	9	8	8	7	-12.5%	-22.2%
Comm Sci/Edu Svcs	11	11	10	11	11	0.0%	0.0%
Early Childhd/Family	8	10	11	10	8	-20.0%	0.0%
Phys Ed/Rec/Health	17	18	17	16	16	0.0%	-5.9%
Special Edu	11	10	9	9	8	-11.1%	-27.3%
Counselor Edu	5	5	5	5	6	20.0%	20.0%
Elem Mid Sec Edu *	21	22	21	19			
Elem Ed/Bil Ed *	0	0	0	0	6		
Mid Sec Ed *	0	0	0	0	11		
<b>EDU Faculty Total:</b>	<b>82</b>	<b>87</b>	<b>84</b>	<b>78</b>	<b>73</b>	<b>-6.4%</b>	<b>-11.0%</b>

\* Department of Elem Mid Sec Edu has split into two departments - Elem Ed/Bil Ed and Mid Sec Ed.

### Full-Time Faculty by Department College of Humanities and Social Sciences

	FALL 2004	FALL 2005	FALL 2006	FALL 2007	FALL 2008	1-YEAR CHANGE	5-YEAR CHANGE
<b>NUMBER OF FACULTY</b>							
<b>Communication</b>	7	7	7	7	7	0.0%	0.0%
<b>English</b>	26	25	25	25	26	4.0%	0.0%
<b>Foreign Languages</b>	7	7	7	8	5	-37.5%	-28.6%
<b>History</b>	12	12	11	12	14	16.7%	16.7%
<b>Philosophy/Religion</b>	7	7	7	7	6	-14.3%	-14.3%
<b>Political Science</b>	7	7	7	7	7	0.0%	0.0%
<b>Psychology</b>	21	21	19	20	18	-10.0%	-14.3%
<b>Social Work</b>	10	11	11	11	9	-18.2%	-10.0%
<b>Sociology/Anthropology</b>	12	12	12	12	14	16.7%	16.7%
<b>HSS Faculty Total:</b>	<b>109</b>	<b>109</b>	<b>106</b>	<b>109</b>	<b>106</b>	<b>-2.8%</b>	<b>-2.8%</b>

### Full-Time Faculty by Department College of Natural, Applied, and Health Sciences

	FALL 2004	FALL 2005	FALL 2006	FALL 2007	FALL 2008	1-YEAR CHANGE	5-YEAR CHANGE
<b>NUMBER OF FACULTY</b>							
<b>Biological Sciences</b>	14	15	13	14	16	14.3%	14.3%
<b>Chemistry/Physics</b>	12	11	12	11	11	0.0%	-8.3%
<b>Geology/Meteorology</b>	9	9	10	11	11	0.0%	22.2%
<b>Nursing</b>	6	7	7	9	8	-11.1%	33.3%
<b>Occupational Therapy</b>	5	3	3	4	4	0.0%	-20.0%
<b>Mathematics</b>	12	12	12	13	13	0.0%	8.3%
<b>Computer Science</b>	20	17	14	15	15	0.0%	-25.0%
<b>NAHS Faculty Total:</b>	<b>80</b>	<b>76</b>	<b>73</b>	<b>78</b>	<b>78</b>	<b>0.0%</b>	<b>-2.5%</b>

### Full-Time Faculty by Department School of Visual and Performing Arts

	FALL 2004	FALL 2005	FALL 2006	FALL 2007	FALL 2008	1-YEAR CHANGE	5-YEAR CHANGE
<b>NUMBER OF FACULTY</b>							
<b>Design</b>	13	14	14	13	14	7.7%	7.7%
<b>Fine Arts</b>	17	17	16	14	14	0.0%	-17.6%
<b>Music</b>	8	8	7	7	7	0.0%	-12.5%
<b>Theatre</b>	6	6	6	6	6	0.0%	0.0%
<b>Media &amp; Film</b>	4	5	5	5	5	0.0%	25.0%
<b>VPA Faculty Total:</b>	<b>48</b>	<b>50</b>	<b>48</b>	<b>45</b>	<b>46</b>	<b>2.2%</b>	<b>-4.2%</b>

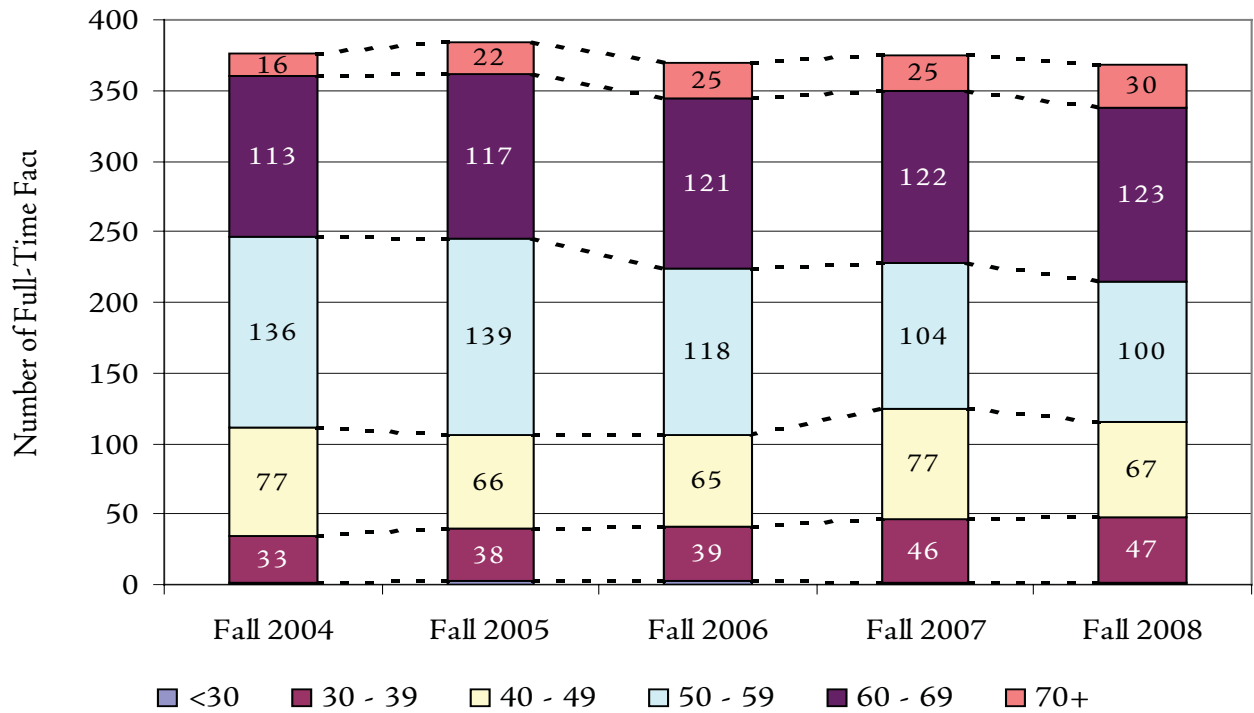
### Full-Time Faculty by Department Nathan Weiss Graduate College

	FALL 2004	FALL 2005	FALL 2006	FALL 2007	FALL 2008	1-YEAR CHANGE	5-YEAR CHANGE
<b>NUMBER OF FACULTY</b>							
<b>Edu Leadership</b>	6	5	5	7	7	0.0%	16.7%
<b>Grad Mgmt Studies</b>	0	2	3	3	3	0.0%	
<b>Sci &amp; Tech Edu</b>	3	5	5	6	6	0.0%	100.0%
<b>NWGC Faculty Total:</b>	<b>9</b>	<b>12</b>	<b>13</b>	<b>16</b>	<b>16</b>	<b>0.0%</b>	<b>77.8%</b>

### Distribution of Full-Time Faculty by Age

	FALL	FALL	FALL	FALL	FALL 2008		5-YEAR
	2004	2005	2006	2007	No.	%	CHANGE
<b>AGE</b>							
< 30	1	2	2	1	1	0.3%	0.0%
30 - 39	33	38	39	46	47	12.8%	42.4%
40 - 49	77	66	65	77	67	18.2%	-13.0%
50 - 59	136	139	118	104	100	27.2%	-26.5%
60 - 69	113	117	121	122	123	33.4%	8.8%
70 +	16	22	25	25	30	8.2%	87.5%
<b>TOTAL</b>	<b>376</b>	<b>384</b>	<b>370</b>	<b>375</b>	<b>368</b>	<b>100.0%</b>	<b>-2.1%</b>
<b>AVERAGE AGE</b>	<b>54.32</b>	<b>54.68</b>	<b>55.03</b>	<b>54.42</b>	<b>55.22</b>		<b>1.7%</b>

Distribution of Full-Time Faculty by Age Group  
Fall 2004 - Fall 2008





Office of Institutional Research  
Kean University  
1000 Morris Avenue  
Union, New Jersey 07083  
<http://ir.kean.edu>  
908.737.3470