



# Kean University

## *Student and Faculty Profile*

Fall 2007  
Office of Institutional Research

## *Quick Facts*

Founded:	1855	President:	Dr. Dawood Farahi
Campus Size:	190.4 acres	Mailing Address:	1000 Morris Avenue Union, New Jersey 07083
Main Campus:	121.5 acres		
East Campus:	28.5 acres	Main Phone:	(908) 737-KEAN (908) 737-5326
Liberty Hall Campus:	35.4 acres		
Number of Colleges:	6	Admissions:	(908) 737-7100
Degree Programs Offered:		Public Info:	(908) 737-NEWS (908) 737-6397
Undergraduate Programs	52		
Graduate Programs	31		
Average Class Size:	19		
Student/Faculty Ratio:	15:1		
2007-2008 Tuition and Fees: (full-time, in-state, undergraduate)	\$8,505.00		
2007-2008 Tuition and Fees: (full-time, in-state, graduate)	\$11,766.00		

## *Contents*

<i>Enrollment</i> .....	<i>Page 01</i>
<i>Degrees Conferred</i> .....	<i>Page 23</i>
<i>Employees</i> .....	<i>Page 33</i>
<i>Faculty</i> .....	<i>Page 37</i>





# Kean University

## *Enrollment*

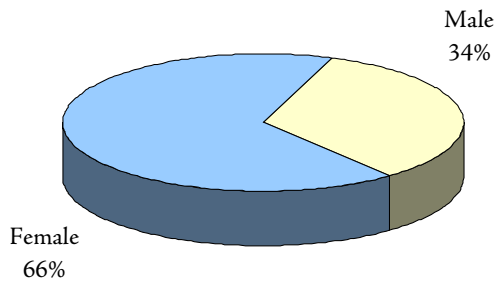
Page 02	At-a-Glance
Page 04	Enrollment Trends
Page 06	Enrollment by Geographic Origin
Page 08	Retention & Graduation Rates
Page 10	Enrollment by Department and Program
Page 16	Second Majors by Program
Page 17	Course FTE

## Fall 2007 Enrollment At-a-Glance

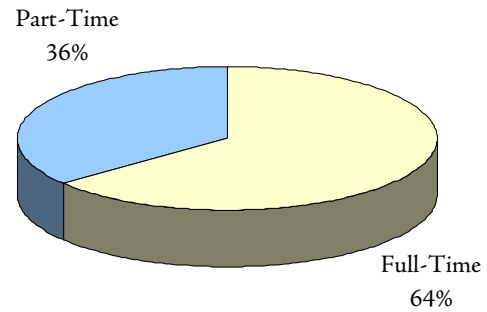
	UNIVERSITY		UNDERGRADUATE		GRADUATE	
	No.	%	No.	%	No.	%
<b>ENROLLMENT</b>						
Headcount	13,394	100%	10,441	100%	2,953	100%
F.T.E.	9807.5		8390.1		1417.4	
<b>GENDER</b>						
Male	4,515	33.7%	3,869	37.1%	646	21.9%
Female	8,879	66.3%	6,572	62.9%	2,307	78.1%
<b>RACE / ETHNICITY</b>						
Black	2,570	19.2%	2,093	20.0%	477	16.2%
Hispanic	2,405	18.0%	2,083	20.0%	322	10.9%
Asian	809	6.0%	694	6.6%	115	3.9%
White	6,985	52.2%	5,051	48.4%	1,934	65.5%
Unknown	625	4.7%	520	5.0%	105	3.6%
<b>ATTENDANCE STATUS</b>						
Full-Time	8,590	64.1%	7,976	76.4%	614	20.8%
Part-Time	4,804	35.9%	2,465	23.6%	2,339	79.2%
<b>ADMISSIONS STATUS</b>						
Regular	6,624	49.5%	4,298	41.2%	2,326	78.8%
Special	512	3.8%	512	4.9%		
E.O.F.	921	6.9%	921	8.8%		
Transfer	4,366	32.6%	4,366	41.8%		
E.O.F. Transfer	246	1.8%	246	2.4%		
Other	725	5.4%	98	0.9%	627	21.2%
<b>REGISTRATION STATUS</b>						
First-Time	2,563	19.1%	1,529	14.6%	1,034	35.0%
Transfer	1,278	9.5%	1,278	12.2%		
Stop-out / Readmit	531	4.0%	531	5.1%		
Continuing	9,022	67.4%	7,103	68.0%	1,919	65.0%
<b>AGE</b>						
<25	7,753	57.9%	7,338	70.3%	415	14.1%
25 - 34	3,129	23.4%	1,810	17.3%	1,319	44.7%
35 - 44	1,342	10.0%	768	7.4%	574	19.4%
45 - 54	893	6.7%	423	4.1%	470	15.9%
55+	277	2.1%	102	1.0%	175	5.9%
Average Age	27		25		35	
<b>MATRICULATION STATUS</b>						
Degree Seeking	12,062	90.1%	10,137	97.1%	1,925	65.2%
Certificate / Non-Degree	638	4.8%	242	2.3%	396	13.4%
Non-matriculated	694	5.2%	62	0.6%	632	21.4%
<b>STATE RESIDENCE</b>						
New Jersey	12,888	96.2%	10,058	96.3%	2,830	95.8%
Out-of-State	230	1.7%	178	1.7%	52	1.8%
International	276	2.1%	205	2.0%	71	2.4%
Not Reported	0	0.0%	0	0.0%	0	0.0%

Additional information is available online at <http://ir.kean.edu>.

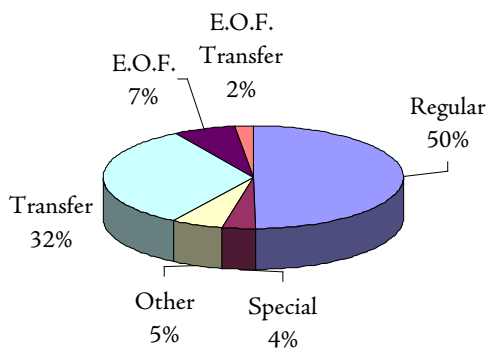
**DISTRIBUTION OF STUDENTS  
BY GENDER**



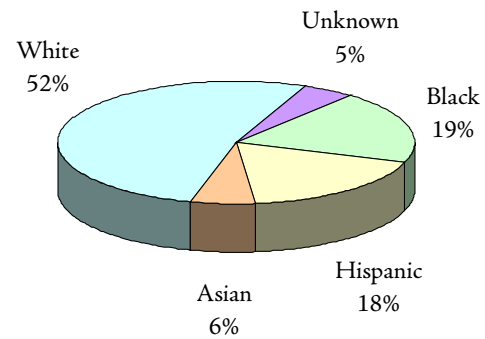
**DISTRIBUTION OF STUDENTS  
BY ATTENDANCE STATUS**



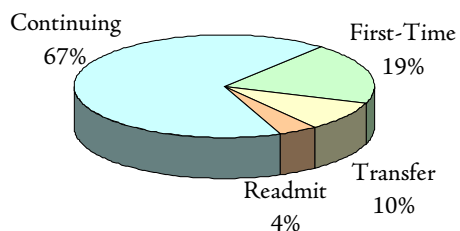
**DISTRIBUTION OF STUDENTS  
BY ADMIT STATUS**



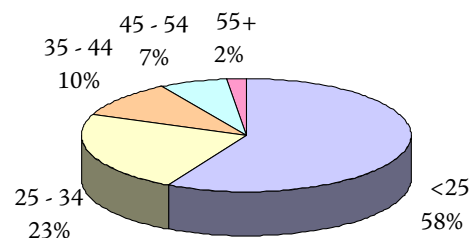
**DISTRIBUTION OF STUDENTS  
BY ETHNICITY**



**DISTRIBUTION OF STUDENTS  
BY REGISTRATION STATUS**



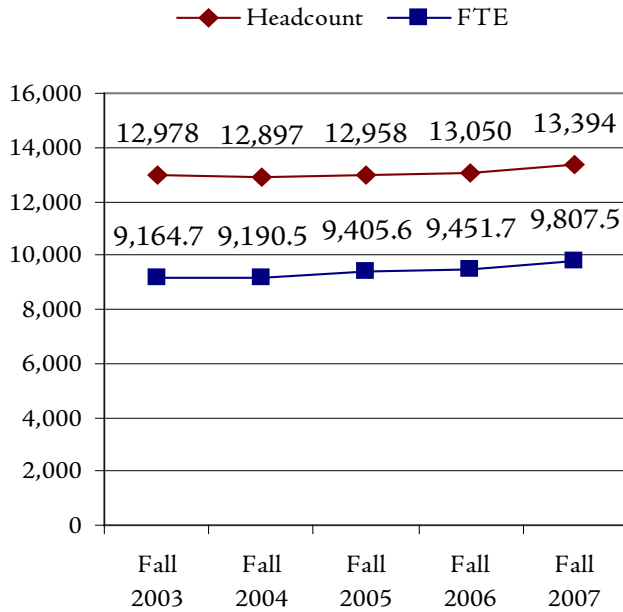
**DISTRIBUTION OF STUDENTS  
BY AGE GROUP**



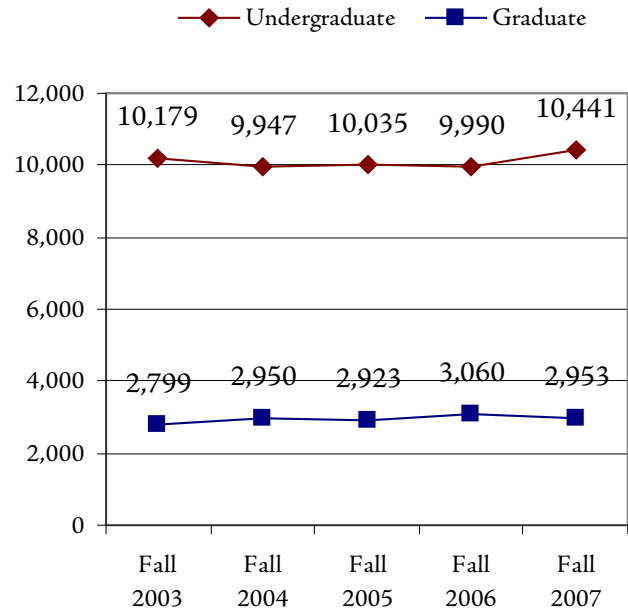
## Enrollment Trends (Fall 2003 - Fall 2007)

	FALL 2003	FALL 2004	FALL 2005	FALL 2006	FALL 2007	1 YEAR CHANGE	5 YEAR CHANGE
<b>ENROLLMENT</b>							
Headcount	12,978	12,897	12,958	13,050	13,394	2.6%	3.2%
F.T.E.	9164.7	9190.5	9405.6	9451.7	9807.5	3.8%	7.0%
Undergraduate	10,179	9,947	10,035	9,990	10,441	4.5%	2.6%
Graduate	2,799	2,950	2,923	3,060	2,953	-3.5%	5.5%
<b>GENDER</b>							
Male	4,268	4,179	4,322	4,343	4,515	4.0%	5.8%
Female	8,710	8,718	8,636	8,707	8,879	2.0%	1.9%
<b>RACE / ETHNICITY</b>							
Black	2,617	2,640	2,701	2,525	2,570	1.8%	-1.8%
Hispanic	2,403	2,268	2,312	2,271	2,405	5.9%	0.1%
Asian	812	830	831	810	809	-0.1%	-0.4%
White	6,699	6,756	6,657	6,866	6,985	1.7%	4.3%
Unknown	447	403	457	578	625	8.1%	39.8%
<b>ATTENDANCE STATUS</b>							
Full-Time	7,950	7,936	8,204	8,250	8,590	4.1%	8.1%
Part-Time	5,028	4,961	4,754	4,800	4,804	0.1%	-4.5%
<b>ADMISSIONS STATUS</b>							
Regular	6,338	6,450	6,583	6,488	6,624	2.1%	4.5%
Special	552	526	514	517	512	-1.0%	-7.2%
E.O.F.	895	846	873	834	921	10.4%	2.9%
Transfer	4,079	3,990	3,966	4,125	4,366	5.8%	7.0%
E.O.F. Transfer	288	238	223	207	246	18.8%	-14.6%
Other	826	847	799	879	725	-17.5%	-12.2%
<b>REGISTRATION STATUS</b>							
First-Time	2,515	2,441	2,585	2,724	2,563	-5.9%	1.9%
Transfer	1,178	1,071	992	1,256	1,278	1.8%	8.5%
Stop-out / Readmit	612	545	498	444	531	19.6%	-13.2%
Continuing	8,673	8,840	8,883	8,626	9,022	4.6%	4.0%
<b>AGE</b>							
<25	6,936	6,898	7,208	7,425	7,753	4.4%	11.8%
25 - 34	3,382	3,274	3,172	3,048	3,129	2.7%	-7.5%
35 - 44	1,502	1,540	1,446	1,395	1,342	-3.8%	-10.7%
45 - 54	947	949	896	930	893	-4.0%	-5.7%
55+	211	235	236	252	277	9.9%	31.3%
Not Reported	0	1	0	0	0		
Average Age	27.55	27.71	27.35	27.27	27.04	-0.8%	-1.8%
<b>MATRICULATION STATUS</b>							
Degree Seeking	11,483	11,331	11,569	11,600	12,062	4.0%	5.0%
Certificate / Non-Degree	758	725	644	613	638	4.1%	-15.8%
Non-matriculated	737	841	745	837	694	-17.1%	-5.8%
<b>STATE RESIDENCE</b>							
New Jersey	12,407	12,382	12,469	12,544	12,888	2.7%	3.9%
Out-of-State	197	194	201	237	230	-3.0%	16.8%
International	374	321	287	268	276	3.0%	-26.2%
Not Reported	0	0	1	1	0		

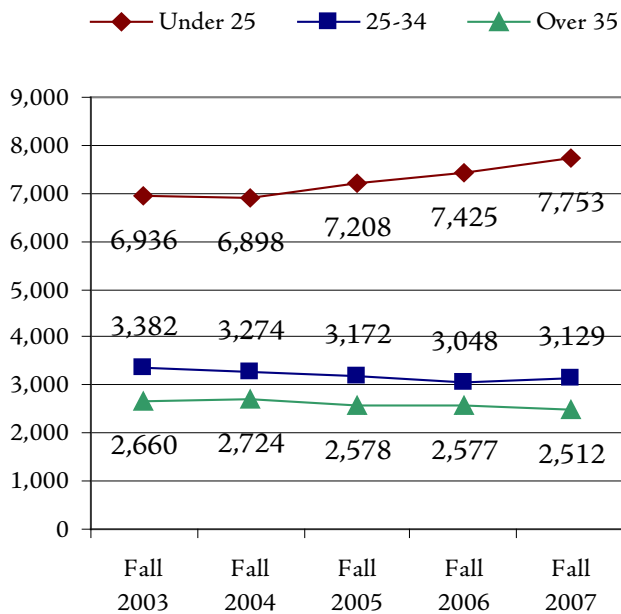
### HEADCOUNT & FTE FALL 2003 - FALL 2007



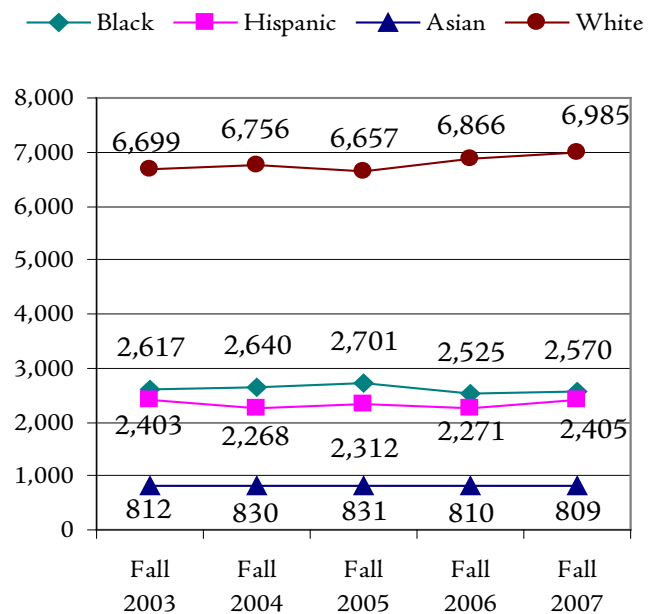
### UNDERGRADUATE & GRADUATE FALL 2003 - FALL 2007



### AGE GROUP FALL 2003 - FALL 2007



### RACE / ETHNICITY FALL 2003 - FALL 2007





## Enrollment by Geographic Origin

	FALL 2003	FALL 2004	FALL 2005	FALL 2006	FALL 2007		5-YEAR CHANGE
					No.	%	
<b>NEW JERSEY RESIDENTS</b>	<b>12,407</b>	<b>12,382</b>	<b>12,469</b>	<b>12,544</b>	<b>12,888</b>	<b>96.2%</b>	<b>3.9%</b>
Union	4,049	3,843	3,849	3,633	3,692	27.6%	-8.8%
Middlesex	2,892	2,993	3,101	3,000	3,049	22.8%	5.4%
Essex	1,683	1,671	1,681	1,518	1,523	11.4%	-9.5%
Monmouth	962	1,016	942	925	930	6.9%	-3.3%
Somerset	401	387	396	694	714	5.3%	78.1%
Ocean	235	280	277	521	681	5.1%	189.8%
Hudson	553	486	480	504	536	4.0%	-3.1%
Bergen	400	408	439	440	443	3.3%	10.8%
Morris	383	408	427	390	383	2.9%	0.0%
Passaic	266	269	246	245	258	1.9%	-3.0%
Hunterdon	80	82	101	126	135	1.0%	68.8%
Mercer	128	108	114	118	114	0.9%	-10.9%
Burlington	101	101	115	114	106	0.8%	5.0%
Camden	53	63	58	69	77	0.6%	45.3%
Atlantic	46	46	53	54	51	0.4%	10.9%
Warren	58	65	60	62	60	0.4%	3.4%
Gloucester	17	19	23	34	39	0.3%	129.4%
Sussex	56	72	65	48	43	0.3%	-23.2%
Cumberland	20	19	16	14	22	0.2%	10.0%
Cape May	15	16	18	25	18	0.1%	20.0%
Salem	9	8	8	9	14	0.1%	55.6%
County Unknown	0	22	0	1	0	0.0%	
<b>NON-RESIDENTS</b>	<b>197</b>	<b>194</b>	<b>201</b>	<b>237</b>	<b>230</b>	<b>1.7%</b>	<b>16.8%</b>
New York	143	138	140	163	159	1.2%	11.2%
Pennsylvania	27	26	24	35	26	0.2%	-3.7%
Other	27	30	37	39	45	0.3%	66.7%
<b>INTERNATIONAL</b>	<b>374</b>	<b>321</b>	<b>287</b>	<b>268</b>	<b>276</b>	<b>2.1%</b>	<b>-26.2%</b>
<b>NOT REPORTED</b>	<b>0</b>	<b>0</b>	<b>1</b>	<b>1</b>	<b>0</b>	<b>0.0%</b>	
<b>TOTAL</b>	<b>12,978</b>	<b>12,897</b>	<b>12,958</b>	<b>13,050</b>	<b>13,394</b>	<b>100.0%</b>	<b>3.2%</b>

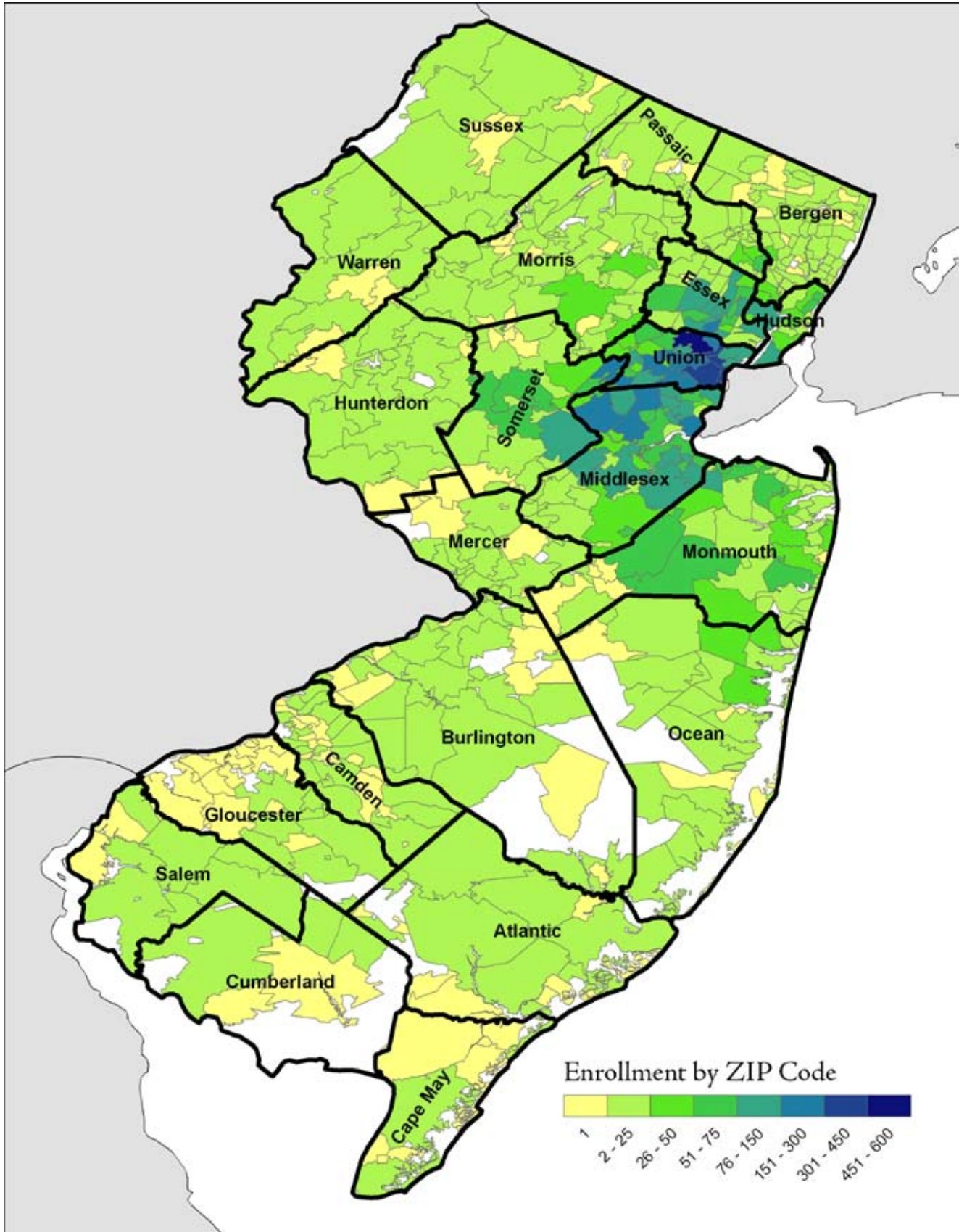
### Top 10 Countries of Citizenship for International Students (in alphabetical order)

Bermuda	Nigeria
Columbia	Pakistan
India	People's Republic of China
Jamaca	Poland
Kenya	Trinidad and Tobago

International students come from 77 different countries and areas.



# Fall 2007 Enrollment by ZIP Code



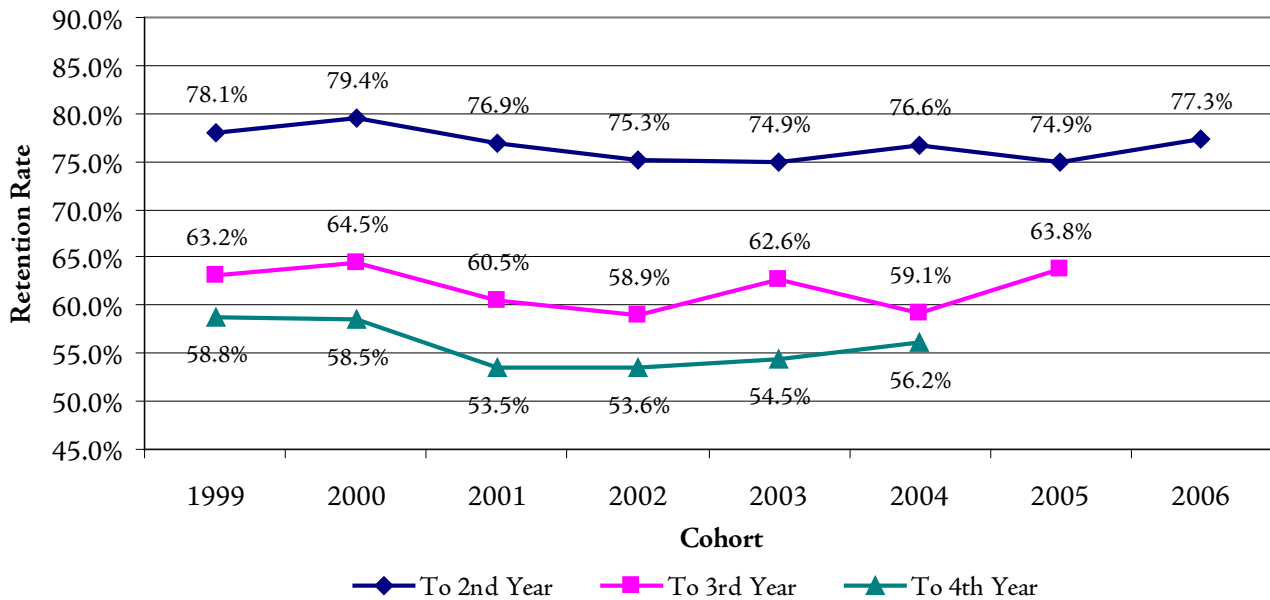
### First-Time, Full-Time Freshmen Retention Rates

COHORT YEAR	HEAD COUNT	# CONTINUED			% CONTINUED		
		TO 2ND YEAR	TO 3RD YEAR	TO 4TH YEAR	TO 2ND YEAR	TO 3RD YEAR	TO 4TH YEAR
1997	872	689	571	525	79.01%	65.48%	60.21%
1998	1,034	817	682	618	79.01%	65.96%	59.77%
1999	999	780	631	587	78.08%	63.16%	58.76%
2000	1,161	922	749	679	79.41%	64.51%	58.48%
2001	1,132	871	685	605	76.94%	60.51%	53.45%
2002	1,317	991	776	706	75.25%	58.92%	53.61%
2003	1,311	982	821	714	74.90%	62.62%	54.46%
2004	1,254	961	741	705	76.63%	59.09%	56.22%
2005	1,391	1,042	887		74.91%	63.77%	
2006	1,394	1,078			77.33%		

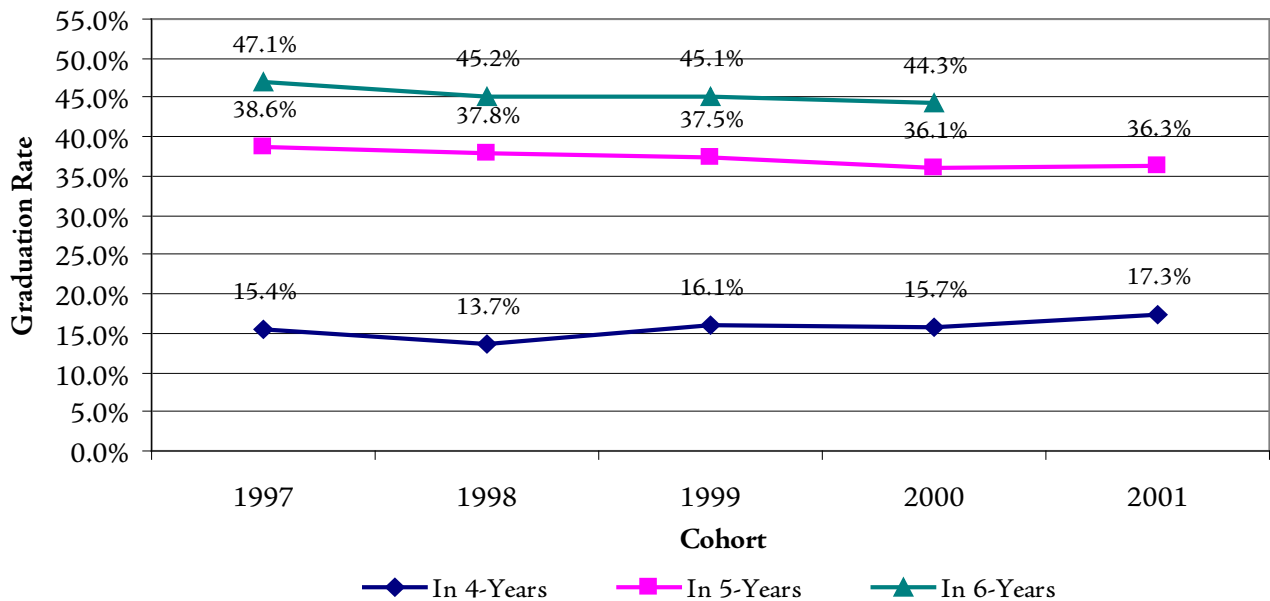
### First-Time, Full-Time Freshmen Graduation Rates

COHORT YEAR	HEAD COUNT	# GRADUATED			% GRADUATED		
		IN 4 YEARS	IN 5 YEARS	IN 6 YEARS	IN 4 YEARS	IN 5 YEARS	IN 6 YEARS
1997	872	134	337	411	15.37%	38.65%	47.13%
1998	1,034	142	391	467	13.73%	37.81%	45.16%
1999	999	161	375	451	16.12%	37.54%	45.15%
2000	1,161	182	419	514	15.68%	36.09%	44.27%
2001	1,132	196	411		17.31%	36.31%	

### First-Time, Full-Time Freshmen Retention Rates 1999 - 2006 Cohorts



### First-Time, Full-Time Freshmen Graduation Rates 1997 - 2001 Cohorts



## Enrollment by Department and Program College of Business and Public Administration

	FALL 2003	FALL 2004	FALL 2005	FALL 2006	FALL 2007	1-YEAR CHANGE	5-YEAR CHANGE
<b>ENROLLMENT</b>							
<b>Accounting</b>							
Accounting (UG)	399	422	399	368	433	17.7%	8.5%
Accounting (GR)	75	83	91	88	74	-15.9%	-1.3%
<b>Accounting Total:</b>	<b>474</b>	<b>505</b>	<b>490</b>	<b>456</b>	<b>507</b>	<b>11.2%</b>	<b>7.0%</b>
<b>Criminal Justice</b>							
Criminal Justice (UG)	448	481	513	530	547	3.2%	22.1%
<b>Criminal Justice Total:</b>	<b>448</b>	<b>481</b>	<b>513</b>	<b>530</b>	<b>547</b>	<b>3.2%</b>	<b>22.1%</b>
<b>Economics/Finance</b>							
Economics (UG)	152	149	178	175	204	16.6%	34.2%
Finance (UG)	198	186	166	149	171	14.8%	-13.6%
<b>Economics/Finance Total:</b>	<b>350</b>	<b>335</b>	<b>344</b>	<b>324</b>	<b>375</b>	<b>15.7%</b>	<b>7.1%</b>
<b>Management</b>							
Management Sci. (UG)	790	745	733	669	712	6.4%	-9.9%
<b>Management Total:</b>	<b>790</b>	<b>745</b>	<b>733</b>	<b>669</b>	<b>712</b>	<b>6.4%</b>	<b>-9.9%</b>
<b>Marketing</b>							
Marketing (UG)	281	271	276	284	292	2.8%	3.9%
<b>Marketing Total:</b>	<b>281</b>	<b>271</b>	<b>276</b>	<b>284</b>	<b>292</b>	<b>2.8%</b>	<b>3.9%</b>
<b>Public Adm</b>							
Public Admin. (UG)	116	110	108	105	118	12.4%	1.7%
Public Admin. (GR)	152	160	169	179	145	-19.0%	-4.6%
<b>Public Adm Total:</b>	<b>268</b>	<b>270</b>	<b>277</b>	<b>284</b>	<b>263</b>	<b>-7.4%</b>	<b>-1.9%</b>
<i>BPA UG Total:</i>	<i>2,384</i>	<i>2,364</i>	<i>2,373</i>	<i>2,280</i>	<i>2,477</i>	<i>8.6%</i>	<i>3.9%</i>
<i>BPA GR Total:</i>	<i>227</i>	<i>243</i>	<i>260</i>	<i>267</i>	<i>219</i>	<i>-18.0%</i>	<i>-3.5%</i>
<b>BPA Total:</b>	<b>2,611</b>	<b>2,607</b>	<b>2,633</b>	<b>2,547</b>	<b>2,696</b>	<b>5.9%</b>	<b>3.3%</b>



## Enrollment by Department and Program College of Education

	FALL 2003	FALL 2004	FALL 2005	FALL 2006	FALL 2007	1-YEAR CHANGE	5-YEAR CHANGE
<b>ENROLLMENT</b>							
<b>Comm Disorder/Deaf</b>							
Speech Lang. Pathology (GR)	114	108	95	103	110	6.8%	-3.5%
Speech, Lang Hear. Sci. (UG)	132	131	119	129	138	7.0%	4.5%
<b>Comm Disorder/Deaf Total:</b>	<b>246</b>	<b>239</b>	<b>214</b>	<b>232</b>	<b>248</b>	<b>6.9%</b>	<b>0.8%</b>
<b>Comm Sci/Edu Svcs</b>							
Edu/Media/Spec. (GR)	46	34	41	40	24	-40.0%	-47.8%
Reading Spec. (GR)	56	83	100	93	83	-10.8%	48.2%
<b>Comm Sci/Edu Svcs Total:</b>	<b>102</b>	<b>117</b>	<b>141</b>	<b>133</b>	<b>107</b>	<b>-19.5%</b>	<b>4.9%</b>
<b>Counselor Edu</b>							
Counselor Edu (GR)	199	206	230	220	238	8.2%	19.6%
<b>Counselor Edu Total:</b>	<b>199</b>	<b>206</b>	<b>230</b>	<b>220</b>	<b>238</b>	<b>8.2%</b>	<b>19.6%</b>
<b>Early Childhd/Family</b>							
Early Childhood Edu. (UG)	553	545	547	570	585	2.6%	5.8%
Early Childhood Edu. (GR)	165	146	126	102	70	-31.4%	-57.6%
<b>Early Childhd/Family Total:</b>	<b>718</b>	<b>691</b>	<b>673</b>	<b>672</b>	<b>655</b>	<b>-2.5%</b>	<b>-8.8%</b>
<b>Elem Mid Sec Edu</b>							
Elementary Edu (UG)	796	789	840	860	842	-2.1%	5.8%
Instruction & Curriculum (GR)	219	230	233	208	193	-7.2%	-11.9%
<b>Elem Mid Sec Edu Total:</b>	<b>1,015</b>	<b>1,019</b>	<b>1,073</b>	<b>1,068</b>	<b>1,035</b>	<b>-3.1%</b>	<b>2.0%</b>
<b>Phys Ed/Rec/Health</b>							
Athletic Training (UG)	0	0	0	0	51		
Exercise Science (GR)	14	14	20	23	22	-4.3%	57.1%
Physical Edu (UG)	350	385	425	476	478	0.4%	36.6%
Recreation Admin. (UG)	63	58	59	58	72	24.1%	14.3%
<b>Phys Ed/Rec/Health Total:</b>	<b>427</b>	<b>457</b>	<b>504</b>	<b>557</b>	<b>623</b>	<b>11.8%</b>	<b>45.9%</b>
<b>Spec Edu/Indv Serv</b>							
Educator of Indivs with Disabilities (UG)	387	369	329	214	206	-3.7%	-46.8%
Special Edu (GR)	199	217	231	277	317	14.4%	59.3%
<b>Spec Edu/Indv Serv Total:</b>	<b>586</b>	<b>586</b>	<b>560</b>	<b>491</b>	<b>523</b>	<b>6.5%</b>	<b>-10.8%</b>
<b>EDU UG Total:</b>	<b>2,281</b>	<b>2,277</b>	<b>2,319</b>	<b>2,307</b>	<b>2,372</b>	<b>2.8%</b>	<b>4.0%</b>
<b>EDU GR Total:</b>	<b>1,012</b>	<b>1,038</b>	<b>1,076</b>	<b>1,066</b>	<b>1,057</b>	<b>-0.8%</b>	<b>4.4%</b>
<b>EDU Total:</b>	<b>3,293</b>	<b>3,315</b>	<b>3,395</b>	<b>3,373</b>	<b>3,429</b>	<b>1.7%</b>	<b>4.1%</b>

## Enrollment by Department and Program

### College of Humanities and Social Sciences

	FALL 2003	FALL 2004	FALL 2005	FALL 2006	FALL 2007	1-YEAR CHANGE	5-YEAR CHANGE
<b>ENROLLMENT</b>							
<b>Communication</b>							
Communication (UG)	255	213	200	191	201	5.2%	-21.2%
Communication Studies (GR)	4	10	12	16	21	31.3%	425.0%
<b>Communication Total:</b>	<b>259</b>	<b>223</b>	<b>212</b>	<b>207</b>	<b>222</b>	<b>7.2%</b>	<b>-14.3%</b>
<b>English</b>							
English (UG)	252	248	281	315	348	10.5%	38.1%
<b>English Total:</b>	<b>252</b>	<b>248</b>	<b>281</b>	<b>315</b>	<b>348</b>	<b>10.5%</b>	<b>38.1%</b>
<b>Foreign Languages</b>							
Spanish (UG)	206	207	203	200	212	6.0%	2.9%
<b>Foreign Languages Total:</b>	<b>206</b>	<b>207</b>	<b>203</b>	<b>200</b>	<b>212</b>	<b>6.0%</b>	<b>2.9%</b>
<b>History</b>							
History (UG)	303	321	347	397	401	1.0%	32.3%
<b>History Total:</b>	<b>303</b>	<b>321</b>	<b>347</b>	<b>397</b>	<b>401</b>	<b>1.0%</b>	<b>32.3%</b>
<b>Philosophy/Religion</b>							
Philosophy and Religion (UG)	12	14	7	14	8	-42.9%	-33.3%
<b>Philosophy/Religion Total:</b>	<b>12</b>	<b>14</b>	<b>7</b>	<b>14</b>	<b>8</b>	<b>-42.9%</b>	<b>-33.3%</b>
<b>Political Science</b>							
Political Science (UG)	114	106	119	100	118	18.0%	3.5%
Political Science (GR)	0	4	7	17	18	5.9%	
<b>Political Science Total:</b>	<b>114</b>	<b>110</b>	<b>126</b>	<b>117</b>	<b>136</b>	<b>16.2%</b>	<b>19.3%</b>
<b>Psychology</b>							
Behavioral Sci (GR)	74	72	55	48	43	-10.4%	-41.9%
Edu Psych (GR)	19	19	25	10	12	20.0%	-36.8%
Marri & Fam Therapy (GR)	17	23	29	31	33	6.5%	94.1%
Psych Rehab (UG)	44	48	44	41	38	-7.3%	-13.6%
Psychology (UG)	734	765	811	796	816	2.5%	11.2%
School Psychology (GR)	32	32	26	35	32	-8.6%	0.0%
<b>Psychology Total:</b>	<b>920</b>	<b>959</b>	<b>990</b>	<b>961</b>	<b>974</b>	<b>1.4%</b>	<b>5.9%</b>
<b>Social Work</b>							
Social Work (UG)	149	156	167	173	213	23.1%	43.0%
Social Work (GR)	103	96	94	88	83	-5.7%	-19.4%
<b>Social Work Total:</b>	<b>252</b>	<b>252</b>	<b>261</b>	<b>261</b>	<b>296</b>	<b>13.4%</b>	<b>17.5%</b>
<b>Sociology/Anthropology</b>							
Sociology (UG)	211	205	188	197	242	22.8%	14.7%
<b>Sociology/Anthropology Total:</b>	<b>211</b>	<b>205</b>	<b>188</b>	<b>197</b>	<b>242</b>	<b>22.8%</b>	<b>14.7%</b>
<i>HSS UG Total:</i>	<i>2,280</i>	<i>2,283</i>	<i>2,367</i>	<i>2,424</i>	<i>2,597</i>	<i>7.1%</i>	<i>13.9%</i>
<i>HSS GR Total:</i>	<i>249</i>	<i>256</i>	<i>248</i>	<i>245</i>	<i>242</i>	<i>-1.2%</i>	<i>-2.8%</i>
<b>HSS Total:</b>	<b>2,529</b>	<b>2,539</b>	<b>2,615</b>	<b>2,669</b>	<b>2,839</b>	<b>6.4%</b>	<b>12.3%</b>

## Enrollment by Department and Program College of Natural, Applied, and Health Sciences

	FALL 2003	FALL 2004	FALL 2005	FALL 2006	FALL 2007	1-YEAR CHANGE	5-YEAR CHANGE
<b>ENROLLMENT</b>							
<b>Biological Sciences</b>							
Biology (UG)	388	385	396	419	479	14.3%	23.5%
Medical Tech. (UG)	52	54	58	59	54	-8.5%	3.8%
<b>Biological Sciences Total:</b>	<b>440</b>	<b>439</b>	<b>454</b>	<b>478</b>	<b>533</b>	<b>11.5%</b>	<b>21.1%</b>
<b>Chemistry/Physics</b>							
Chemistry (UG)	75	86	98	91	90	-1.1%	20.0%
<b>Chemistry/Physics Total:</b>	<b>75</b>	<b>86</b>	<b>98</b>	<b>91</b>	<b>90</b>	<b>-1.1%</b>	<b>20.0%</b>
<b>Computer Science</b>							
Comp.Integrated Design & Mfg. Tech. (UG)	0	7	14	17	10	-41.2%	
Computer Science (UG)	402	256	192	147	141	-4.1%	-64.9%
Electronics Tech. (UG)	80	49	34	23	21	-8.7%	-73.8%
Tech.Edu. (UG)	2	2	2	3	1	-66.7%	-50.0%
Telecomm.Info.Tech. (UG)	27	40	43	28	23	-17.9%	-14.8%
<b>Computer Science Total:</b>	<b>511</b>	<b>354</b>	<b>285</b>	<b>218</b>	<b>196</b>	<b>-10.1%</b>	<b>-61.6%</b>
<b>Geology/Meteorology</b>							
Earth Science (UG)	88	77	85	76	82	7.9%	-6.8%
<b>Geology/Meteorology Total:</b>	<b>88</b>	<b>77</b>	<b>85</b>	<b>76</b>	<b>82</b>	<b>7.9%</b>	<b>-6.8%</b>
<b>Health Info Mgmt</b>							
HIM (UG)	51	61	79	58	42	-27.6%	-17.6%
<b>Health Info Mgmt Total:</b>	<b>51</b>	<b>61</b>	<b>79</b>	<b>58</b>	<b>42</b>	<b>-27.6%</b>	<b>-17.6%</b>
<b>Mathematics</b>							
Comp/Stat/Math. (GR)	9	14	12	6	6	0.0%	-33.3%
Math. Edu. (GR)	15	14	18	13	15	15.4%	0.0%
Math. Science (UG)	183	200	205	201	236	17.4%	29.0%
<b>Mathematics Total:</b>	<b>207</b>	<b>228</b>	<b>235</b>	<b>220</b>	<b>257</b>	<b>16.8%</b>	<b>24.2%</b>
<b>Nursing</b>							
M.S.N./M.P.A. in Nursing (GR)	18	19	18	18	11	-38.9%	-38.9%
Nursing (UG)	174	156	158	253	270	6.7%	55.2%
Nursing (GR)	55	63	66	67	71	6.0%	29.1%
<b>Nursing Total:</b>	<b>247</b>	<b>238</b>	<b>242</b>	<b>338</b>	<b>352</b>	<b>4.1%</b>	<b>42.5%</b>
<b>Occupational Therapy</b>							
Occupational Therapy (UG)	48	22	8	0	1		-97.9%
Occupational Therapy (GR)	28	34	46	61	72	18.0%	157.1%
<b>Occupational Therapy Total:</b>	<b>76</b>	<b>56</b>	<b>54</b>	<b>61</b>	<b>73</b>	<b>19.7%</b>	<b>-3.9%</b>
<i>NAHS UG Total:</i>	<i>1,570</i>	<i>1,395</i>	<i>1,372</i>	<i>1,375</i>	<i>1,450</i>	<i>5.5%</i>	<i>-7.6%</i>
<i>NAHS GR Total:</i>	<i>125</i>	<i>144</i>	<i>160</i>	<i>165</i>	<i>175</i>	<i>6.1%</i>	<i>40.0%</i>
<b>NAHS Total:</b>	<b>1,695</b>	<b>1,539</b>	<b>1,532</b>	<b>1,540</b>	<b>1,625</b>	<b>5.5%</b>	<b>-4.1%</b>

## Enrollment by Department and Program School of Visual and Performing Arts

	FALL 2003	FALL 2004	FALL 2005	FALL 2006	FALL 2007	1-YEAR CHANGE	5-YEAR CHANGE
<b>ENROLLMENT</b>							
<b>Design</b>							
Graphic Comm (UG)	89	79	68	68	62	-8.8%	-30.3%
Graphic Comm (GR)	24	22	22	31	35	12.9%	45.8%
Industrial Design (UG)	19	34	34	29	30	3.4%	57.9%
Interior Design (UG)	164	173	157	141	132	-6.4%	-19.5%
Visual Comm (UG)	176	157	166	169	166	-1.8%	-5.7%
<b>Design Total:</b>	<b>472</b>	<b>465</b>	<b>447</b>	<b>438</b>	<b>425</b>	<b>-3.0%</b>	<b>-10.0%</b>
<b>Fine Arts</b>							
Art History (UG)	18	22	20	18	22	22.2%	22.2%
Fine Arts (UG)	108	122	130	135	117	-13.3%	8.3%
Fine Arts Edu (GR)	46	50	59	52	58	11.5%	26.1%
Studio Art (UG)	29	32	41	36	37	2.8%	27.6%
<b>Fine Arts Total:</b>	<b>201</b>	<b>226</b>	<b>250</b>	<b>241</b>	<b>234</b>	<b>-2.9%</b>	<b>16.4%</b>
<b>Media &amp; Film</b>							
Communication - Broadcast (UG)	86	135	134	91	51	-44.0%	-40.7%
Media (UG)	0	0	0	35	102	191.4%	
<b>Media &amp; Film Total:</b>	<b>86</b>	<b>135</b>	<b>134</b>	<b>126</b>	<b>153</b>	<b>21.4%</b>	<b>77.9%</b>
<b>Music</b>							
Music (UG)	19	28	25	25	32	28.0%	68.4%
Music Edu. (UG)	39	49	46	36	41	13.9%	5.1%
<b>Music Total:</b>	<b>58</b>	<b>77</b>	<b>71</b>	<b>61</b>	<b>73</b>	<b>19.7%</b>	<b>25.9%</b>
<b>Theatre</b>							
Speech & Theatre (UG)	7	8	6	11	12	9.1%	71.4%
Theatre (UG)	38	39	44	50	59	18.0%	55.3%
Theatre Design & Tech. (UG)	0	0	0	0	2		
Theatre Performance (UG)	0	0	0	0	6		
<b>Theatre Total:</b>	<b>45</b>	<b>47</b>	<b>50</b>	<b>61</b>	<b>79</b>	<b>29.5%</b>	<b>75.6%</b>
<b>VPA Other</b>							
Liberal Studies (GR)	28	30	24	30	23	-23.3%	-17.9%
<b>VPA Other Total:</b>	<b>28</b>	<b>30</b>	<b>24</b>	<b>30</b>	<b>23</b>	<b>-23.3%</b>	<b>-17.9%</b>
<i>VPA UG Total:</i>	<i>792</i>	<i>878</i>	<i>871</i>	<i>844</i>	<i>871</i>	<i>3.2%</i>	<i>10.0%</i>
<i>VPA GR Total:</i>	<i>98</i>	<i>102</i>	<i>105</i>	<i>113</i>	<i>116</i>	<i>2.7%</i>	<i>18.4%</i>
<b>VPA Total:</b>	<b>890</b>	<b>980</b>	<b>976</b>	<b>957</b>	<b>987</b>	<b>3.1%</b>	<b>10.9%</b>



## Enrollment by Department and Program Nathan Weiss Graduate College

	FALL 2003	FALL 2004	FALL 2005	FALL 2006	FALL 2007	1-YEAR CHANGE	5-YEAR CHANGE
<b>ENROLLMENT</b>							
<b>Edu Leadership</b>							
Edu Admin. (GR)	254	283	253	260	249	-4.2%	-2.0%
<b>Edu Leadership Total:</b>	<b>254</b>	<b>283</b>	<b>253</b>	<b>260</b>	<b>249</b>	<b>-4.2%</b>	<b>-2.0%</b>
<b>Grad Mgmt Studies</b>							
MBA in Global Management (GR)	0	0	20	42	96	128.6%	
MIS (GR)	61	39	34	34	23	-32.4%	-62.3%
<b>Grad Mgmt Studies Total:</b>	<b>61</b>	<b>39</b>	<b>54</b>	<b>76</b>	<b>119</b>	<b>56.6%</b>	<b>95.1%</b>
<b>NWGC Other</b>							
Holocaust & Genocide (GR)	0	0	0	5	14	180.0%	
<b>NWGC Other Total:</b>	<b>0</b>	<b>0</b>	<b>0</b>	<b>5</b>	<b>14</b>	<b>180.0%</b>	
<b>Sci &amp; Tech Edu</b>							
Biotechnology (GR)	14	14	21	21	21	0.0%	50.0%
Science & Tech. (UG)	0	0	16	68	62	-8.8%	
<b>Sci &amp; Tech Edu Total:</b>	<b>14</b>	<b>14</b>	<b>37</b>	<b>89</b>	<b>83</b>	<b>-6.7%</b>	<b>492.9%</b>
<i>NWGC UG Total:</i>	<i>0</i>	<i>0</i>	<i>16</i>	<i>68</i>	<i>62</i>	<i>-8.8%</i>	
<i>NWGC GR Total:</i>	<i>329</i>	<i>336</i>	<i>328</i>	<i>362</i>	<i>403</i>	<i>11.3%</i>	<i>22.5%</i>
<b>NWGC Total:</b>	<b>329</b>	<b>336</b>	<b>344</b>	<b>430</b>	<b>465</b>	<b>8.1%</b>	<b>41.3%</b>

## Second Majors by Program

	FALL 2003	FALL 2004	FALL 2005	FALL 2006	FALL 2007	1-YEAR CHANGE	5-YEAR CHANGE
<b>ENROLLMENT</b>							
Psychology	139	191	167	183	171	-6.6%	23.0%
English	126	137	152	140	141	0.7%	11.9%
History	64	70	73	73	73	0.0%	14.1%
Earth Science	44	35	34	40	40	0.0%	-9.1%
Spanish	44	68	53	41	36	-12.2%	-18.2%
Sociology	49	45	34	43	34	-20.9%	-30.6%
Liberal Studies in math	0	7	10	15	26	73.3%	
Math. Science	28	19	21	29	20	-31.0%	-28.6%
Fine Arts	11	12	16	13	19	46.2%	72.7%
Communication	20	21	13	11	11	0.0%	-45.0%
Economics	11	15	9	10	11	10.0%	0.0%
Biology	15	13	8	5	8	60.0%	-46.7%
Liberal Studies in EarthSci	0	2	2	6	7	16.7%	
Political Science	6	7	10	9	6	-33.3%	0.0%
Liberal Studies in Bio	0	2	3	5	6	20.0%	
Art History	6	1	3	2	5	150.0%	-16.7%
Finance	4	2	5	3	4	33.3%	0.0%
Criminal Justice	2	2	2	3	3	0.0%	50.0%
Theatre	5	4	6	2	3	50.0%	-40.0%
Management Sci.	3	7	5	3	2	-33.3%	-33.3%
Marketing	1	1	1	3	2	-33.3%	100.0%
Computer Science	3	4	3	2	2	0.0%	-33.3%
Philosophy and Religion	2	1	4	1	2	100.0%	0.0%
Educator of Indivs with Disabilities	0	0	0	0	2		
Public Admin.	2	3	2	0	2		
Liberal Studies in Tech	0	5	5	6	1		
Physical Edu	1	0	0	1	1		
Medical Tech.	0	0	0	0	1		
Music	2	2	2	0	1		
HIM	0	0	0	0	1		
Telecomm.Info.Tech.	0	0	0	0	1		
Chemistry	1	1	2	1	0		
Media	0	0	0	1	0		
Interior Design	0	0	0	1	0		
Industrial Design	0	1	1	0	0		
Occupational Therapy	0	1	0	0	0		
Psych Rehab	1	0	0	0	0		
Accounting	2	2	0	0	0		
Communication - Broadcast	7	5	2	0	0		
Electronics Tech.	0	1	0	0	0		
Recreation Admin.	0	1	0	0	0		
Second Majors Total	599	688	648	652	642	-1.5%	7.2%

## Course FTE by Department and Academic Level College of Business and Public Administration

	FALL 2003	FALL 2004	FALL 2005	FALL 2006	FALL 2007	1-YEAR CHANGE	5-YEAR CHANGE
<b>COURSE FTE</b>							
<b>Accounting</b>							
UG	175.7	167.6	160.9	148.7	196.7	32.3%	12.0%
GR	49.3	51.5	54.8	55.3	47.3	-14.5%	-4.1%
<b>Accounting Total:</b>	<b>224.9</b>	<b>219.1</b>	<b>215.6</b>	<b>203.9</b>	<b>243.9</b>	<b>19.6%</b>	<b>8.4%</b>
<b>Criminal Justice</b>							
UG	153.5	156.7	164.7	168.6	165.3	-2.0%	7.7%
GR				4.5	8.3	83.3%	
<b>Criminal Justice Total:</b>	<b>153.5</b>	<b>156.7</b>	<b>164.7</b>	<b>173.1</b>	<b>173.6</b>	<b>0.3%</b>	<b>13.1%</b>
<b>Economics/Finance</b>							
UG	316.1	282.8	274.3	246.8	272.6	10.5%	-13.8%
GR	2.5	5.5	8.0	4.8	6.8	42.1%	170.0%
<b>Economics/Finance Total:</b>	<b>318.6</b>	<b>288.3</b>	<b>282.3</b>	<b>251.5</b>	<b>279.4</b>	<b>11.1%</b>	<b>-12.3%</b>
<b>Management</b>							
UG	354.9	340.9	321.9	272.1	342.9	26.1%	-3.4%
GR	18.0	10.5	9.3	10.3	14.8	43.9%	-18.1%
<b>Management Total:</b>	<b>372.9</b>	<b>351.4</b>	<b>331.2</b>	<b>282.3</b>	<b>357.7</b>	<b>26.7%</b>	<b>-4.1%</b>
<b>Marketing</b>							
UG	108.6	93.8	97.1	97.3	108.8	11.8%	0.2%
GR		6.0	4.0	6.5	10.5	61.5%	
<b>Marketing Total:</b>	<b>108.6</b>	<b>99.8</b>	<b>101.1</b>	<b>103.8</b>	<b>119.3</b>	<b>14.9%</b>	<b>9.8%</b>
<b>Public Adm</b>							
UG	68.8	71.1	80.1	79.1	81.9	3.6%	19.1%
GR	106.3	115.3	116.5	116.3	87.3	-24.9%	-17.9%
<b>Public Adm Total:</b>	<b>175.1</b>	<b>186.3</b>	<b>196.6</b>	<b>195.4</b>	<b>169.2</b>	<b>-13.4%</b>	<b>-3.4%</b>
<i>BPA UG Total:</i>	<i>1,177.6</i>	<i>1,112.8</i>	<i>1,099.0</i>	<i>1,012.6</i>	<i>1,168.3</i>	<i>15.4%</i>	<i>-0.8%</i>
<i>BPA GR Total:</i>	<i>176.0</i>	<i>188.8</i>	<i>192.5</i>	<i>197.5</i>	<i>174.8</i>	<i>-11.5%</i>	<i>-0.7%</i>
<b>BPA Total:</b>	<b>1,353.6</b>	<b>1,301.5</b>	<b>1,291.5</b>	<b>1,210.1</b>	<b>1,343.0</b>	<b>11.0%</b>	<b>-0.8%</b>

# Course FTE by Department and Academic Level College of Education

	FALL 2003	FALL 2004	FALL 2005	FALL 2006	FALL 2007	1-YEAR CHANGE	5-YEAR CHANGE
<b>COURSE FTE</b>							
<b>Comm Disorder/Deaf</b>							
UG	65.1	72.6	67.7	60.9	60.9	0.0%	-6.4%
GR	95.0	85.5	85.1	94.5	114.3	20.9%	20.3%
<b>Comm Disorder/Deaf Total:</b>	<b>160.1</b>	<b>158.1</b>	<b>152.8</b>	<b>155.4</b>	<b>175.2</b>	<b>12.7%</b>	<b>9.4%</b>
<b>Comm Sci/Edu Svcs</b>							
UG	92.4	97.9	106.1	99.8	121.3	21.6%	31.2%
GR	43.7	48.8	55.1	57.0	45.8	-19.7%	4.8%
<b>Comm Sci/Edu Svcs Total:</b>	<b>136.1</b>	<b>146.7</b>	<b>161.2</b>	<b>156.8</b>	<b>167.1</b>	<b>6.6%</b>	<b>22.7%</b>
<b>Counselor Edu</b>							
GR	103.3	100.0	105.0	104.3	109.8	5.3%	6.3%
<b>Counselor Edu Total:</b>	<b>103.3</b>	<b>100.0</b>	<b>105.0</b>	<b>104.3</b>	<b>109.8</b>	<b>5.3%</b>	<b>6.3%</b>
<b>Early Childhd/Family</b>							
UG	131.1	143.1	140.1	157.3	171.1	8.8%	30.5%
GR	76.6	72.3	65.3	42.0	29.0	-31.0%	-62.1%
<b>Early Childhd/Family Total:</b>	<b>207.7</b>	<b>215.4</b>	<b>205.4</b>	<b>199.3</b>	<b>200.1</b>	<b>0.4%</b>	<b>-3.7%</b>
<b>Elem Mid Sec Edu</b>							
UG				184.1	205.7	11.7%	
GR				135.0	121.5	-10.0%	
<b>Elem Mid Sec Edu Total:</b>				<b>319.1</b>	<b>327.2</b>	<b>2.5%</b>	
<b>Phys Ed/Rec/Health</b>							
UG	505.1	537.5	545.0	585.1	620.1	6.0%	22.8%
GR	8.5	8.3	10.8	9.5	12.0	26.3%	41.2%
<b>Phys Ed/Rec/Health Total:</b>	<b>513.6</b>	<b>545.8</b>	<b>555.8</b>	<b>594.6</b>	<b>632.1</b>	<b>6.3%</b>	<b>23.1%</b>
<b>Spec Edu/Indv Serv</b>							
UG	130.6	127.3	124.1	102.5	105.8	3.2%	-19.0%
GR	111.5	113.5	129.5	130.8	141.5	8.2%	26.9%
<b>Spec Edu/Indv Serv Total:</b>	<b>242.1</b>	<b>240.8</b>	<b>253.6</b>	<b>233.3</b>	<b>247.3</b>	<b>6.0%</b>	<b>2.2%</b>
<b>EDU Other</b>							
UG	104.1	107.6	116.1	105.6	102.2	-3.2%	-1.8%
<b>EDU Other Total:</b>	<b>104.1</b>	<b>107.6</b>	<b>116.1</b>	<b>105.6</b>	<b>102.2</b>	<b>-3.2%</b>	<b>-1.8%</b>
<i>EDU UG Total:</i>	<i>1,028.4</i>	<i>1,085.9</i>	<i>1,099.1</i>	<i>1,295.2</i>	<i>1,387.1</i>	<i>7.1%</i>	<i>34.9%</i>
<i>EDU GR Total:</i>	<i>438.5</i>	<i>428.3</i>	<i>450.8</i>	<i>573.0</i>	<i>573.8</i>	<i>0.1%</i>	<i>30.8%</i>
<b>EDU Total:</b>	<b>1,466.9</b>	<b>1,514.3</b>	<b>1,549.9</b>	<b>1,868.2</b>	<b>1,960.8</b>	<b>5.0%</b>	<b>33.7%</b>



# Course FTE by Department and Academic Level

## College of Humanities and Social Sciences

	FALL 2003	FALL 2004	FALL 2005	FALL 2006	FALL 2007	1-YEAR CHANGE	5-YEAR CHANGE
<b>COURSE FTE</b>							
<b>Communication</b>							
UG	337.6	353.8	308.3	312.4	303.1	-3.0%	-10.2%
GR	5.8	7.0	11.0	14.8	17.8	20.3%	208.7%
<b>Communication Total:</b>	<b>343.4</b>	<b>360.8</b>	<b>319.3</b>	<b>327.1</b>	<b>320.9</b>	<b>-1.9%</b>	<b>-6.6%</b>
<b>English</b>							
UG	847.4	789.8	837.8	820.9	868.9	5.9%	2.5%
GR	17.8	14.5	12.0	17.5	9.7	-44.8%	-45.5%
<b>English Total:</b>	<b>865.1</b>	<b>804.3</b>	<b>849.8</b>	<b>838.4</b>	<b>878.6</b>	<b>4.8%</b>	<b>1.6%</b>
<b>Foreign Languages</b>							
UG	196.5	194.3	189.9	171.4	177.8	3.7%	-9.5%
GR	5.8	4.0	1.5	2.3	1.3	-44.4%	-78.3%
<b>Foreign Languages Total:</b>	<b>202.3</b>	<b>198.3</b>	<b>191.4</b>	<b>173.6</b>	<b>179.0</b>	<b>3.1%</b>	<b>-11.5%</b>
<b>History</b>							
UG	392.4	416.8	422.3	392.1	411.6	5.0%	4.9%
GR	2.0	4.0	4.3		1.0		-50.0%
<b>History Total:</b>	<b>394.4</b>	<b>420.8</b>	<b>426.5</b>	<b>392.1</b>	<b>412.6</b>	<b>5.2%</b>	<b>4.6%</b>
<b>Philosophy/Religion</b>							
UG	178.7	170.1	167.6	164.6	130.9	-20.5%	-26.8%
<b>Philosophy/Religion Total:</b>	<b>178.7</b>	<b>170.1</b>	<b>167.6</b>	<b>164.6</b>	<b>130.9</b>	<b>-20.5%</b>	<b>-26.8%</b>
<b>Political Science</b>							
UG	179.6	138.4	124.7	140.4	145.5	3.6%	-19.0%
GR	1.5	4.8	4.5	10.8	14.0	30.2%	833.3%
<b>Political Science Total:</b>	<b>181.1</b>	<b>143.1</b>	<b>129.2</b>	<b>151.2</b>	<b>159.5</b>	<b>5.5%</b>	<b>-11.9%</b>
<b>Psychology</b>							
UG	539.4	548.9	579.3	623.8	643.3	3.1%	19.3%
GR	92.0	89.8	94.5	94.5	86.8	-8.2%	-5.7%
<b>Psychology Total:</b>	<b>631.4</b>	<b>638.7</b>	<b>673.8</b>	<b>718.3</b>	<b>730.0</b>	<b>1.6%</b>	<b>15.6%</b>
<b>Social Work</b>							
UG	56.9	61.0	56.8	57.2	73.9	29.2%	29.7%
GR	112.0	115.0	114.5	109.0	103.3	-5.3%	-7.8%
<b>Social Work Total:</b>	<b>168.9</b>	<b>176.0</b>	<b>171.3</b>	<b>166.2</b>	<b>177.1</b>	<b>6.6%</b>	<b>4.8%</b>
<b>Sociology/Anthropology</b>							
UG	342.6	355.5	347.6	354.9	377.3	6.3%	10.1%
<b>Sociology/Anthropology Total:</b>	<b>342.6</b>	<b>355.5</b>	<b>347.6</b>	<b>354.9</b>	<b>377.3</b>	<b>6.3%</b>	<b>10.1%</b>
<i>HSS UG Total:</i>	<i>3,071.1</i>	<i>3,028.5</i>	<i>3,034.3</i>	<i>3,037.7</i>	<i>3,132.1</i>	<i>3.1%</i>	<i>2.0%</i>
<i>HSS GR Total:</i>	<i>236.8</i>	<i>239.0</i>	<i>242.3</i>	<i>248.8</i>	<i>233.7</i>	<i>-6.1%</i>	<i>-1.3%</i>
<b>HSS Total:</b>	<b>3,307.9</b>	<b>3,267.5</b>	<b>3,276.5</b>	<b>3,286.4</b>	<b>3,365.8</b>	<b>2.4%</b>	<b>1.8%</b>

# Course FTE by Department and Academic Level

## College of Natural, Applied, and Health Sciences

	FALL 2003	FALL 2004	FALL 2005	FALL 2006	FALL 2007	1-YEAR CHANGE	5-YEAR CHANGE
<b>COURSE FTE</b>							
<b>Biological Sciences</b>							
UG	256.6	261.9	298.8	320.6	341.1	6.4%	33.0%
<b>Biological Sciences Total:</b>	<b>256.6</b>	<b>261.9</b>	<b>298.8</b>	<b>320.6</b>	<b>341.1</b>	<b>6.4%</b>	<b>33.0%</b>
<b>Chemistry/Physics</b>							
UG	141.9	144.3	145.3	155.8	160.4	2.9%	13.0%
GR	0.5	0.8	0.3	0.5			
<b>Chemistry/Physics Total:</b>	<b>142.4</b>	<b>145.0</b>	<b>145.6</b>	<b>156.3</b>	<b>160.4</b>	<b>2.6%</b>	<b>12.6%</b>
<b>Computer Science</b>							
UG	294.9	257.3	243.2	228.8	232.2	1.5%	-21.3%
GR	4.0	4.3	5.0	2.8	1.8	-36.4%	-56.3%
<b>Computer Science Total:</b>	<b>298.9</b>	<b>261.6</b>	<b>248.2</b>	<b>231.6</b>	<b>233.9</b>	<b>1.0%</b>	<b>-21.7%</b>
<b>Geology/Meteorology</b>							
UG	157.2	159.3	157.1	166.0	165.3	-0.5%	5.1%
GR							
<b>Geology/Meteorology Total:</b>	<b>157.2</b>	<b>159.3</b>	<b>157.1</b>	<b>166.0</b>	<b>165.3</b>	<b>-0.5%</b>	<b>5.1%</b>
<b>Health Info Mgmt</b>							
UG	26.2	21.2	30.8	34.8	17.8	-48.8%	-32.0%
<b>Health Info Mgmt Total:</b>	<b>26.2</b>	<b>21.2</b>	<b>30.8</b>	<b>34.8</b>	<b>17.8</b>	<b>-48.8%</b>	<b>-32.0%</b>
<b>Mathematics</b>							
UG	575.1	574.6	611.6	623.9	652.8	4.6%	13.5%
GR	14.8	17.5	18.0	13.0	11.5	-11.5%	-22.0%
<b>Mathematics Total:</b>	<b>589.8</b>	<b>592.1</b>	<b>629.6</b>	<b>636.9</b>	<b>664.3</b>	<b>4.3%</b>	<b>12.6%</b>
<b>Nursing</b>							
UG	39.6	39.1	44.9	71.8	70.4	-2.0%	77.6%
GR	33.4	33.3	36.8	35.9	32.7	-9.0%	-2.2%
<b>Nursing Total:</b>	<b>73.0</b>	<b>72.4</b>	<b>81.8</b>	<b>107.7</b>	<b>103.0</b>	<b>-4.4%</b>	<b>41.1%</b>
<b>Occupational Therapy</b>							
UG	16.5	8.0	2.4	1.4	1.1	-21.7%	-93.2%
GR	25.2	28.8	48.4	64.8	67.3	4.0%	167.5%
<b>Occupational Therapy Total:</b>	<b>41.7</b>	<b>36.8</b>	<b>50.9</b>	<b>66.2</b>	<b>68.5</b>	<b>3.4%</b>	<b>64.3%</b>

# Course FTE by Department and Academic Level School of Visual and Performing Arts

	FALL 2003	FALL 2004	FALL 2005	FALL 2006	FALL 2007	1-YEAR CHANGE	5-YEAR CHANGE
<b>COURSE FTE</b>							
<b>Design</b>							
UG	152.1	178.1	188.4	183.6	175.9	-4.2%	15.7%
GR	12.0	12.5	11.3	17.5	13.3	-24.3%	10.4%
<b>Design Total:</b>	<b>164.1</b>	<b>190.6</b>	<b>199.7</b>	<b>201.1</b>	<b>189.1</b>	<b>-5.9%</b>	<b>15.3%</b>
<b>Fine Arts</b>							
UG	275.6	325.8	335.5	351.3	348.3	-0.9%	26.4%
GR	16.5	21.8	23.8	25.3	26.9	6.3%	63.1%
<b>Fine Arts Total:</b>	<b>292.1</b>	<b>347.5</b>	<b>359.3</b>	<b>376.6</b>	<b>375.2</b>	<b>-0.4%</b>	<b>28.5%</b>
<b>Media &amp; Film</b>							
UG			51.0	71.6	77.9	8.9%	
<b>Media &amp; Film Total:</b>			<b>51.0</b>	<b>71.6</b>	<b>77.9</b>	<b>8.9%</b>	
<b>Music</b>							
UG	185.9	149.3	170.9	160.2	155.3	-3.1%	-16.5%
GR					1.3		
<b>Music Total:</b>	<b>185.9</b>	<b>149.3</b>	<b>170.9</b>	<b>160.2</b>	<b>156.5</b>	<b>-2.3%</b>	<b>-15.8%</b>
<b>Theatre</b>							
UG	65.9	74.7	72.4	67.2	72.2	7.4%	9.6%
<b>Theatre Total:</b>	<b>65.9</b>	<b>74.7</b>	<b>72.4</b>	<b>67.2</b>	<b>72.2</b>	<b>7.4%</b>	<b>9.6%</b>
<b>VPA Other</b>							
GR	4.0	5.0	4.3	5.8	3.5	-39.1%	-12.5%
<b>VPA Other Total:</b>	<b>4.0</b>	<b>5.0</b>	<b>4.3</b>	<b>5.8</b>	<b>3.5</b>	<b>-39.1%</b>	<b>-12.5%</b>
<i>VPA UG Total:</i>	<i>679.4</i>	<i>727.9</i>	<i>818.3</i>	<i>833.8</i>	<i>829.5</i>	<i>-0.5%</i>	<i>22.1%</i>
<i>VPA GR Total:</i>	<i>32.5</i>	<i>39.3</i>	<i>39.3</i>	<i>48.6</i>	<i>44.9</i>	<i>-7.5%</i>	<i>38.2%</i>
<b>VPA Total:</b>	<b>711.9</b>	<b>767.1</b>	<b>857.6</b>	<b>882.4</b>	<b>874.4</b>	<b>-0.9%</b>	<b>22.8%</b>

## Course FTE by Department and Academic Level Nathan Weiss Graduate College

	FALL 2003	FALL 2004	FALL 2005	FALL 2006	FALL 2007	1-YEAR CHANGE	5-YEAR CHANGE
<b>COURSE FTE</b>							
<b>Edu Leadership</b>							
UG	168.8	189.5	195.4				
GR	297.0	334.8	310.8	170.5	169.3	-0.7%	-43.0%
<b>Edu Leadership Total:</b>	<b>465.8</b>	<b>524.3</b>	<b>506.2</b>	<b>170.5</b>	<b>169.3</b>	<b>-0.7%</b>	<b>-63.7%</b>
<b>Grad Mgmt Studies</b>							
GR	26.0	27.3	22.5	35.0	39.0	11.4%	50.0%
<b>Grad Mgmt Studies Total:</b>	<b>26.0</b>	<b>27.3</b>	<b>22.5</b>	<b>35.0</b>	<b>39.0</b>	<b>11.4%</b>	<b>50.0%</b>
<b>Sci &amp; Tech Edu</b>							
UG		9.0	22.1	30.8	31.8	3.2%	
GR	8.8	17.7	22.9	21.4	22.5	5.1%	154.7%
<b>Sci &amp; Tech Edu Total:</b>	<b>8.8</b>	<b>26.7</b>	<b>45.0</b>	<b>52.2</b>	<b>54.3</b>	<b>4.0%</b>	<b>514.9%</b>
<b>NWGC Other</b>							
UG					9.2		
GR			2.8	6.3	8.8	40.0%	
<b>NWGC Other Total:</b>			<b>2.8</b>	<b>6.3</b>	<b>17.9</b>	<b>187.0%</b>	
<i>NWGC UG Total:</i>	<i>168.8</i>	<i>198.5</i>	<i>217.5</i>	<i>30.8</i>	<i>41.0</i>	<i>33.1%</i>	<i>-75.7%</i>
<i>NWGC GR Total:</i>	<i>331.8</i>	<i>379.7</i>	<i>358.9</i>	<i>233.2</i>	<i>239.5</i>	<i>2.7%</i>	<i>-27.8%</i>
<b>NWGC Total:</b>	<b>500.6</b>	<b>578.2</b>	<b>576.4</b>	<b>264.0</b>	<b>280.5</b>	<b>6.3%</b>	<b>-44.0%</b>

## Course FTE by Department and Academic Level Other Courses

	FALL 2003	FALL 2004	FALL 2005	FALL 2006	FALL 2007	1-YEAR CHANGE	5-YEAR CHANGE
<b>COURSE FTE</b>							
<b>Other</b>							
UG	225.6	201.3	204.9	202.8	216.4	6.7%	-4.1%
GR	15.8	11.5	8.0	7.3	9.0	24.1%	-42.9%
<b>Other Total:</b>	<b>241.4</b>	<b>212.8</b>	<b>212.9</b>	<b>210.1</b>	<b>225.4</b>	<b>7.3%</b>	<b>-6.6%</b>
<i>Other UG Total:</i>	<i>225.6</i>	<i>201.3</i>	<i>204.9</i>	<i>202.8</i>	<i>216.4</i>	<i>6.7%</i>	<i>-4.1%</i>
<i>Other GR Total:</i>	<i>15.8</i>	<i>11.5</i>	<i>8.0</i>	<i>7.3</i>	<i>9.0</i>	<i>24.1%</i>	<i>-42.9%</i>
<b>Other Total:</b>	<b>241.4</b>	<b>212.8</b>	<b>212.9</b>	<b>210.1</b>	<b>225.4</b>	<b>7.3%</b>	<b>-6.6%</b>





# Kean University

## *Degrees Conferred*

Page 24	At-a-Glance
Page 26	Degrees Conferred by Department and Program College of Business and Public Administration
Page 27	Degrees Conferred by Department and Program College of Education
Page 28	Degrees Conferred by Department and Program College of Humanities and Social Sciences
Page 29	Degrees Conferred by Department and Program College of Natural, Applied, and Health Sciences
Page 30	Degrees Conferred by Department and Program School of Visual and Performing Arts
Page 31	Degrees Conferred by Department and Program Nathan Weiss Graduate College

## Degrees Conferred, Fiscal Year 2006 - 2007

	TOTAL		BACHELOR'S		MASTER'S	
	No.	%	No.	%	No.	%
<b>DEGREE LEVEL</b>						
Bachelor's	1,912	74.8%	1,912	100.0%		
Master's	643	25.2%			643	100.0%
<b>GENDER</b>						
Male	778	30.5%	623	32.6%	155	24.1%
Female	1,777	69.5%	1,289	67.4%	488	75.9%
<b>RACE / ETHNICITY</b>						
Black	505	19.8%	378	19.8%	127	19.8%
Hispanic	403	15.8%	337	17.6%	66	10.3%
Asian	214	8.4%	169	8.8%	45	7.0%
White	1,379	54.0%	990	51.8%	389	60.5%
Unknown	54	2.1%	38	2.0%	16	2.5%
<b>COLLEGE</b>						
BPA	641	25.1%	540	28.2%	101	15.7%
EDU	762	29.8%	409	21.4%	353	54.9%
HSS	645	25.2%	551	28.8%	94	14.6%
NAHS	278	10.9%	239	12.5%	39	6.1%
NWGC	21	0.8%	0	0.0%	21	3.3%
VPA	208	8.1%	173	9.0%	35	5.4%

\* Fiscal Year 2006 - 2007 includes degrees conferred between July 1, 2006, and June 30, 2007.

### Top 10 Bachelor's Degrees Conferred

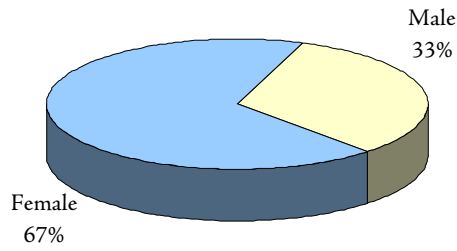
Psychology	200
Management Science	187
Elementary Education	139
Accounting	103
Early Childhood Edu.	99
History	83
Criminal Justice	75
Marketing	73
Biology	69
Physical Education	57

### Top 10 Master's Degrees Conferred

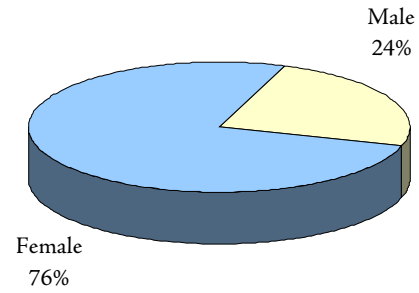
Educational Administration	96
Instruction & Curriculum	61
Special Education	61
Public Administration	53
Accounting	48
Social Work	46
Counselor Education	41
Speech Language Pathology	37
Reading Specialization	24
Early Childhood Edu.	19

Additional information is available online at <http://ir.kean.edu>.

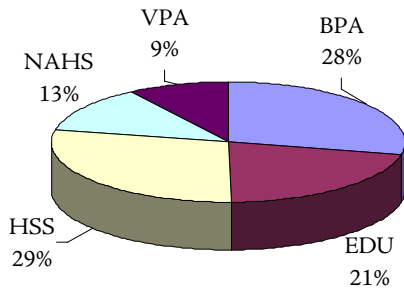
**BACHELOR'S DEGREES  
BY GENDER**



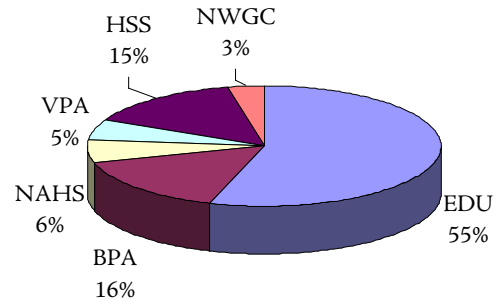
**MASTER'S DEGREES  
BY GENDER**



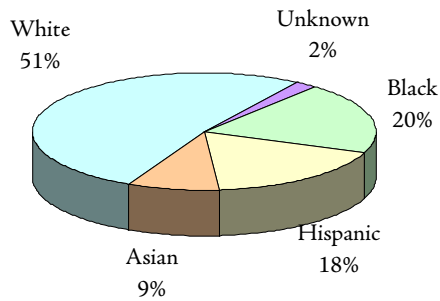
**BACHELOR'S DEGREES  
BY COLLEGE**



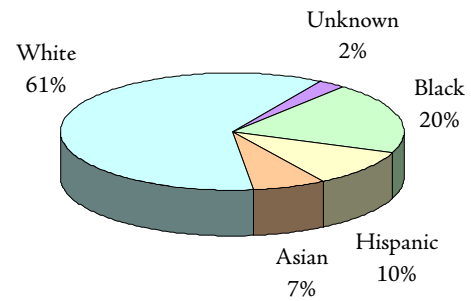
**MASTER'S DEGREES  
BY COLLEGE**



**BACHELOR'S DEGREES  
BY ETHNICITY**



**MASTER'S DEGREES  
BY ETHNICITY**



## Degrees Conferred by Department and Program

### College of Business and Public Administration

	FISCAL Yr 2002-03	FISCAL Yr 2003-04	FISCAL Yr 2004-05	FISCAL Yr 2005-06	FISCAL Yr 2006-07	1-YEAR CHANGE	5-YEAR CHANGE
<b>DEGREES CONFERRED</b>							
<b>Accounting</b>							
Accounting (UG)	109	99	111	114	103	-9.6%	-5.5%
Accounting (GR)	23	29	37	50	48	-4.0%	108.7%
<b>Accounting Total:</b>	<b>132</b>	<b>128</b>	<b>148</b>	<b>164</b>	<b>151</b>	<b>-7.9%</b>	<b>14.4%</b>
<b>Criminal Justice</b>							
Criminal Justice (UG)	69	76	70	81	75	-7.4%	8.7%
<b>Criminal Justice Total:</b>	<b>69</b>	<b>76</b>	<b>70</b>	<b>81</b>	<b>75</b>	<b>-7.4%</b>	<b>8.7%</b>
<b>Economics/Finance</b>							
Economics (UG)	14	14	18	16	21	31.3%	50.0%
Finance (UG)	58	61	61	64	42	-34.4%	-27.6%
<b>Economics/Finance Total:</b>	<b>72</b>	<b>75</b>	<b>79</b>	<b>80</b>	<b>63</b>	<b>-21.3%</b>	<b>-12.5%</b>
<b>Management</b>							
Management Sci. (UG)	203	213	188	210	187	-11.0%	-7.9%
<b>Management Total:</b>	<b>203</b>	<b>213</b>	<b>188</b>	<b>210</b>	<b>187</b>	<b>-11.0%</b>	<b>-7.9%</b>
<b>Marketing</b>							
Marketing (UG)	63	68	78	56	73	30.4%	15.9%
<b>Marketing Total:</b>	<b>63</b>	<b>68</b>	<b>78</b>	<b>56</b>	<b>73</b>	<b>30.4%</b>	<b>15.9%</b>
<b>Public Adm</b>							
Public Admin. (UG)	16	21	26	28	39	39.3%	143.8%
Public Admin. (GR)	60	66	51	59	53	-10.2%	-11.7%
<b>Public Adm Total:</b>	<b>76</b>	<b>87</b>	<b>77</b>	<b>87</b>	<b>92</b>	<b>5.7%</b>	<b>21.1%</b>
<i>BPA UG Total:</i>	<i>532</i>	<i>552</i>	<i>552</i>	<i>569</i>	<i>540</i>	<i>-5.1%</i>	<i>1.5%</i>
<i>BPA GR Total:</i>	<i>83</i>	<i>95</i>	<i>88</i>	<i>109</i>	<i>101</i>	<i>-7.3%</i>	<i>21.7%</i>
<b>BPA Total:</b>	<b>615</b>	<b>647</b>	<b>640</b>	<b>678</b>	<b>641</b>	<b>-5.5%</b>	<b>4.2%</b>

## Degrees Conferred by Department and Program College of Education

Degrees Conferred

	FISCAL YR 2002-03	FISCAL YR 2003-04	FISCAL YR 2004-05	FISCAL YR 2005-06	FISCAL YR 2006-07	1-YEAR CHANGE	5-YEAR CHANGE
<b>DEGREES CONFERRED</b>							
<b>Comm Disorder/Deaf</b>							
Speech Lang. Pathology (GR)	42	33	50	30	37	23.3%	-11.9%
Speech, Lang Hear. Sci. (UG)	28	26	36	26	34	30.8%	21.4%
<b>Comm Disorder/Deaf Total:</b>	<b>70</b>	<b>59</b>	<b>86</b>	<b>56</b>	<b>71</b>	<b>26.8%</b>	<b>1.4%</b>
<b>Comm Sci/Edu Svcs</b>							
Edu/Media/Spec. (GR)	6	15	7	13	12	-7.7%	100.0%
Reading Spec. (GR)	28	13	9	21	24	14.3%	-14.3%
<b>Comm Sci/Edu Svcs Total:</b>	<b>34</b>	<b>28</b>	<b>16</b>	<b>34</b>	<b>36</b>	<b>5.9%</b>	<b>5.9%</b>
<b>Counselor Edu</b>							
Counselor Edu (GR)	31	31	32	44	41	-6.8%	32.3%
<b>Counselor Edu Total:</b>	<b>31</b>	<b>31</b>	<b>32</b>	<b>44</b>	<b>41</b>	<b>-6.8%</b>	<b>32.3%</b>
<b>Early Childhd/Family</b>							
Early Childhood Edu. (UG)	89	102	109	99	99	0.0%	11.2%
Early Childhood Edu. (GR)	14	13	33	27	19	-29.6%	35.7%
<b>Early Childhd/Family Total:</b>	<b>103</b>	<b>115</b>	<b>142</b>	<b>126</b>	<b>118</b>	<b>-6.3%</b>	<b>14.6%</b>
<b>Elem Mid Sec Edu</b>							
Elementary Edu (UG)	74	92	123	109	139	27.5%	87.8%
Instruction & Curriculum (GR)	68	63	73	73	61	-16.4%	-10.3%
<b>Elem Mid Sec Edu Total:</b>	<b>142</b>	<b>155</b>	<b>196</b>	<b>182</b>	<b>200</b>	<b>9.9%</b>	<b>40.8%</b>
<b>Phys Ed/Rec/Health</b>							
Athletic Training (UG)	0	0	0	0	3		
Exercise Science (GR)	0	1	5	6	2	-66.7%	
Physical Edu (UG)	41	51	54	60	57	-5.0%	39.0%
Recreation Admin. (UG)	19	21	24	14	23	64.3%	21.1%
<b>Phys Ed/Rec/Health Total:</b>	<b>60</b>	<b>73</b>	<b>83</b>	<b>80</b>	<b>85</b>	<b>6.3%</b>	<b>41.7%</b>
<b>Spec Edu/Indv Serv</b>							
Educator of Indivs with Disabilities (UG)	89	60	61	57	54	-5.3%	-39.3%
Special Edu (GR)	39	38	41	50	61	22.0%	56.4%
<b>Spec Edu/Indv Serv Total:</b>	<b>128</b>	<b>98</b>	<b>102</b>	<b>107</b>	<b>115</b>	<b>7.5%</b>	<b>-10.2%</b>
<b>EDU UG Total:</b>	<b>340</b>	<b>352</b>	<b>407</b>	<b>365</b>	<b>409</b>	<b>12.1%</b>	<b>20.3%</b>
<b>EDU GR Total:</b>	<b>228</b>	<b>207</b>	<b>250</b>	<b>264</b>	<b>257</b>	<b>-2.7%</b>	<b>12.7%</b>
<b>EDU Total:</b>	<b>568</b>	<b>559</b>	<b>657</b>	<b>629</b>	<b>666</b>	<b>5.9%</b>	<b>17.3%</b>

## Degrees Conferred by Department and Program

### College of Humanities and Social Sciences

	FISCAL Yr 2002-03	FISCAL Yr 2003-04	FISCAL Yr 2004-05	FISCAL Yr 2005-06	FISCAL Yr 2006-07	1-YEAR CHANGE	5-YEAR CHANGE
<b>DEGREES CONFERRED</b>							
<b>Communication</b>							
Communication (UG)	44	28	47	44	42	-4.5%	-4.5%
Communication Studies (GR)	0	0	6	1	9	800.0%	
<b>Communication Total:</b>	<b>44</b>	<b>28</b>	<b>53</b>	<b>45</b>	<b>51</b>	<b>13.3%</b>	<b>15.9%</b>
<b>English</b>							
English (UG)	53	57	45	63	56	-11.1%	5.7%
<b>English Total:</b>	<b>53</b>	<b>57</b>	<b>45</b>	<b>63</b>	<b>56</b>	<b>-11.1%</b>	<b>5.7%</b>
<b>Foreign Languages</b>							
Spanish (UG)	34	42	39	50	41	-18.0%	20.6%
<b>Foreign Languages Total:</b>	<b>34</b>	<b>42</b>	<b>39</b>	<b>50</b>	<b>41</b>	<b>-18.0%</b>	<b>20.6%</b>
<b>History</b>							
History (UG)	58	47	56	57	83	45.6%	43.1%
<b>History Total:</b>	<b>58</b>	<b>47</b>	<b>56</b>	<b>57</b>	<b>83</b>	<b>45.6%</b>	<b>43.1%</b>
<b>Philosophy/Religion</b>							
Philosophy and Religion (UG)	2	2	4	2	4	100.0%	100.0%
<b>Philosophy/Religion Total:</b>	<b>2</b>	<b>2</b>	<b>4</b>	<b>2</b>	<b>4</b>	<b>100.0%</b>	<b>100.0%</b>
<b>Political Science</b>							
Political Science (UG)	29	33	18	34	31	-8.8%	6.9%
Political Science (GR)	0	0	1	3	3	0.0%	
<b>Political Science Total:</b>	<b>29</b>	<b>33</b>	<b>19</b>	<b>37</b>	<b>34</b>	<b>-8.1%</b>	<b>17.2%</b>
<b>Psychology</b>							
Behavioral Sci (GR)	29	24	41	25	15	-40.0%	-48.3%
Edu Psych (GR)	7	12	8	22	5	-77.3%	-28.6%
Marri & Fam Therapy (GR)	5	3	0	4	4	0.0%	-20.0%
Psych Rehab (UG)	20	8	7	11	10	-9.1%	-50.0%
Psychology (UG)	140	132	150	178	200	12.4%	42.9%
School Psychology (GR)	6	8	2	7	12	71.4%	100.0%
<b>Psychology Total:</b>	<b>207</b>	<b>187</b>	<b>208</b>	<b>247</b>	<b>246</b>	<b>-0.4%</b>	<b>18.8%</b>
<b>Social Work</b>							
Social Work (UG)	49	36	44	30	39	30.0%	-20.4%
Social Work (GR)	37	60	53	54	46	-14.8%	24.3%
<b>Social Work Total:</b>	<b>86</b>	<b>96</b>	<b>97</b>	<b>84</b>	<b>85</b>	<b>1.2%</b>	<b>-1.2%</b>
<b>Sociology/Anthropology</b>							
Sociology (UG)	40	31	45	56	45	-19.6%	12.5%
<b>Sociology/Anthropology Total:</b>	<b>40</b>	<b>31</b>	<b>45</b>	<b>56</b>	<b>45</b>	<b>-19.6%</b>	<b>12.5%</b>
<i>HSS UG Total:</i>	<i>469</i>	<i>416</i>	<i>455</i>	<i>525</i>	<i>551</i>	<i>5.0%</i>	<i>17.5%</i>
<i>HSS GR Total:</i>	<i>84</i>	<i>107</i>	<i>111</i>	<i>116</i>	<i>94</i>	<i>-19.0%</i>	<i>11.9%</i>
<b>HSS Total:</b>	<b>553</b>	<b>523</b>	<b>566</b>	<b>641</b>	<b>645</b>	<b>0.6%</b>	<b>16.6%</b>



## Degrees Conferred by Department and Program College of Natural, Applied, and Health Sciences

Degrees Conferred

	FISCAL YR 2002-03	FISCAL YR 2003-04	FISCAL YR 2004-05	FISCAL YR 2005-06	FISCAL YR 2006-07	1-YEAR CHANGE	5-YEAR CHANGE
<b>DEGREES CONFERRED</b>							
<b>Biological Sciences</b>							
Biology (UG)	65	52	44	67	69	3.0%	6.2%
Medical Tech. (UG)	5	6	5	3	6	100.0%	20.0%
<b>Biological Sciences Total:</b>	<b>70</b>	<b>58</b>	<b>49</b>	<b>70</b>	<b>75</b>	<b>7.1%</b>	<b>7.1%</b>
<b>Chemistry/Physics</b>							
Chemistry (UG)	7	7	9	14	12	-14.3%	71.4%
<b>Chemistry/Physics Total:</b>	<b>7</b>	<b>7</b>	<b>9</b>	<b>14</b>	<b>12</b>	<b>-14.3%</b>	<b>71.4%</b>
<b>Computer Science</b>							
Comp.Integrated Design & Mfg. Tech. (UG)	0	0	0	4	3	-25.0%	
Computer Science (UG)	84	71	56	41	29	-29.3%	-65.5%
Electronics Tech. (UG)	18	15	9	3	7	133.3%	-61.1%
Tech.Edu. (UG)	4	1	0	0	1		-75.0%
Telecomm.Info.Tech. (UG)	1	0	3	6	12	100.0%	1100.0%
<b>Computer Science Total:</b>	<b>107</b>	<b>87</b>	<b>68</b>	<b>54</b>	<b>52</b>	<b>-3.7%</b>	<b>-51.4%</b>
<b>Geology/Meteorology</b>							
Earth Science (UG)	7	11	7	10	18	80.0%	157.1%
<b>Geology/Meteorology Total:</b>	<b>7</b>	<b>11</b>	<b>7</b>	<b>10</b>	<b>18</b>	<b>80.0%</b>	<b>157.1%</b>
<b>Health Info Mgmt</b>							
HIM (UG)	7	9	6	17	15	-11.8%	114.3%
<b>Health Info Mgmt Total:</b>	<b>7</b>	<b>9</b>	<b>6</b>	<b>17</b>	<b>15</b>	<b>-11.8%</b>	<b>114.3%</b>
<b>Mathematics</b>							
Comp/Stat/Math. (GR)	2	3	3	2	6	200.0%	200.0%
Math. Edu. (GR)	2	4	2	6	3	-50.0%	50.0%
Math. Science (UG)	12	26	34	29	33	13.8%	175.0%
<b>Mathematics Total:</b>	<b>16</b>	<b>33</b>	<b>39</b>	<b>37</b>	<b>42</b>	<b>13.5%</b>	<b>162.5%</b>
<b>Nursing</b>							
M.S.N./M.P.A. in Nursing (GR)	4	4	4	5	5	0.0%	25.0%
Nursing (UG)	46	54	56	35	33	-5.7%	-28.3%
Nursing (GR)	10	24	20	26	13	-50.0%	30.0%
<b>Nursing Total:</b>	<b>60</b>	<b>82</b>	<b>80</b>	<b>66</b>	<b>51</b>	<b>-22.7%</b>	<b>-15.0%</b>
<b>Occupational Therapy</b>							
Occupational Therapy (UG)	27	17	14	6	1	-83.3%	-96.3%
Occupational Therapy (GR)	0	1	10	10	12	20.0%	
<b>Occupational Therapy Total:</b>	<b>27</b>	<b>18</b>	<b>24</b>	<b>16</b>	<b>13</b>	<b>-18.8%</b>	<b>-51.9%</b>
<i>NAHS UG Total:</i>	<i>283</i>	<i>269</i>	<i>243</i>	<i>235</i>	<i>239</i>	<i>1.7%</i>	<i>-15.5%</i>
<i>NAHS GR Total:</i>	<i>18</i>	<i>36</i>	<i>39</i>	<i>49</i>	<i>39</i>	<i>-20.4%</i>	<i>116.7%</i>
<b>NAHS Total:</b>	<b>301</b>	<b>305</b>	<b>282</b>	<b>284</b>	<b>278</b>	<b>-2.1%</b>	<b>-7.6%</b>

## Degrees Conferred by Department and Program

### School of Visual and Performing Arts

	FISCAL YR 2002-03	FISCAL YR 2003-04	FISCAL YR 2004-05	FISCAL YR 2005-06	FISCAL YR 2006-07	1-YEAR CHANGE	5-YEAR CHANGE
<b>DEGREES CONFERRED</b>							
<b>Design</b>							
Graphic Comm (UG)	13	14	12	15	14	-6.7%	7.7%
Graphic Comm (GR)	4	5	16	6	11	83.3%	175.0%
Industrial Design (UG)	0	0	5	5	9	80.0%	
Interior Design (UG)	10	15	30	33	37	12.1%	270.0%
Visual Comm (UG)	16	21	32	26	28	7.7%	75.0%
<b>Design Total:</b>	<b>43</b>	<b>55</b>	<b>95</b>	<b>85</b>	<b>99</b>	<b>16.5%</b>	<b>130.2%</b>
<b>Fine Arts</b>							
Art History (UG)	3	2	4	7	6	-14.3%	100.0%
Fine Arts (UG)	18	8	11	20	29	45.0%	61.1%
Fine Arts Edu (GR)	15	10	13	15	19	26.7%	26.7%
Studio Art (UG)	4	8	3	5	6	20.0%	50.0%
<b>Fine Arts Total:</b>	<b>40</b>	<b>28</b>	<b>31</b>	<b>47</b>	<b>60</b>	<b>27.7%</b>	<b>50.0%</b>
<b>Media &amp; Film</b>							
Communication - Broadcast (UG)	24	24	37	38	25	-34.2%	4.2%
Media (UG)	0	0	0	1	8	700.0%	
<b>Media &amp; Film Total:</b>	<b>24</b>	<b>24</b>	<b>37</b>	<b>39</b>	<b>33</b>	<b>-15.4%</b>	<b>37.5%</b>
<b>Music</b>							
Music (UG)	3	0	2	6	4	-33.3%	33.3%
Music Edu. (UG)	2	3	6	0	3		50.0%
<b>Music Total:</b>	<b>5</b>	<b>3</b>	<b>8</b>	<b>6</b>	<b>7</b>	<b>16.7%</b>	<b>40.0%</b>
<b>Theatre</b>							
Speech & Theatre (UG)	0	0	1	0	0		
Theatre (UG)	4	4	2	10	4	-60.0%	0.0%
<b>Theatre Total:</b>	<b>4</b>	<b>4</b>	<b>3</b>	<b>10</b>	<b>4</b>	<b>-60.0%</b>	<b>0.0%</b>
<b>VPA Other</b>							
Liberal Studies (GR)	3	4	8	8	5	-37.5%	66.7%
<b>VPA Other Total:</b>	<b>3</b>	<b>4</b>	<b>8</b>	<b>8</b>	<b>5</b>	<b>-37.5%</b>	<b>66.7%</b>
<i>VPA UG Total:</i>	<i>97</i>	<i>99</i>	<i>145</i>	<i>166</i>	<i>173</i>	<i>4.2%</i>	<i>78.4%</i>
<i>VPA GR Total:</i>	<i>22</i>	<i>19</i>	<i>37</i>	<i>29</i>	<i>35</i>	<i>20.7%</i>	<i>59.1%</i>
<b>VPA Total:</b>	<b>119</b>	<b>118</b>	<b>182</b>	<b>195</b>	<b>208</b>	<b>6.7%</b>	<b>74.8%</b>

## Degrees Conferred by Department and Program Nathan Weiss Graduate College

Degrees Conferred

	FISCAL YR 2002-03	FISCAL YR 2003-04	FISCAL YR 2004-05	FISCAL YR 2005-06	FISCAL YR 2006-07	1-YEAR CHANGE	5-YEAR CHANGE
<b>DEGREES CONFERRED</b>							
<b>Edu Leadership</b>							
Edu Admin. (GR)	107	97	92	85	96	12.9%	-10.3%
<b>Edu Leadership Total:</b>	<b>107</b>	<b>97</b>	<b>92</b>	<b>85</b>	<b>96</b>	<b>12.9%</b>	<b>-10.3%</b>
<b>Grad Mgmt Studies</b>							
MBA in Global Management (GR)	0	0	0	0	3		
MIS (GR)	44	30	17	21	10	-52.4%	-77.3%
<b>Grad Mgmt Studies Total:</b>	<b>44</b>	<b>30</b>	<b>17</b>	<b>21</b>	<b>13</b>	<b>-38.1%</b>	<b>-70.5%</b>
<b>Sci &amp; Tech Edu</b>							
Biotechnology (GR)	6	4	3	8	8	0.0%	33.3%
<b>Sci &amp; Tech Edu Total:</b>	<b>6</b>	<b>4</b>	<b>3</b>	<b>8</b>	<b>8</b>	<b>0.0%</b>	<b>33.3%</b>
<i>NWGC GR Total:</i>	<i>157</i>	<i>131</i>	<i>112</i>	<i>114</i>	<i>117</i>	<i>2.6%</i>	<i>-25.5%</i>
<b>NWGC Total:</b>	<b>157</b>	<b>131</b>	<b>112</b>	<b>114</b>	<b>117</b>	<b>2.6%</b>	<b>-25.5%</b>





# Kean University

## *Employees*

Page 34

At-a-Glance

## Fall 2007 Employee Demographics

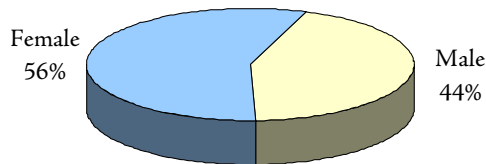
	TOTAL		FACULTY		STAFF	
	TOTAL	%	#	%	#	%
TOTAL FULL-TIME	1,154	100.0%	375	100.0%	779	100.0%
GENDER						
Male	508	44.0%	199	53.1%	309	39.7%
Female	646	56.0%	176	46.9%	470	60.3%
RACE / ETHNICITY						
Black	241	20.9%	40	10.7%	201	25.8%
Hispanic	206	17.9%	30	8.0%	176	22.6%
Asian	80	6.9%	38	10.1%	42	5.4%
White	620	53.7%	264	70.4%	356	45.7%
Unknown	5	0.4%	3	0.8%	2	0.3%
EMPLOYEE GROUP						
Faculty	375	32.5%	375	100.0%		
Administrative & Managerial	160	13.9%			160	20.5%
Professional	192	16.6%			192	24.6%
Clerk & Secretarial	159	13.8%			159	20.4%
Technical & Paraprofessional	71	6.2%			71	9.1%
Service Maintenance	153	13.3%			153	19.6%
Skilled Crafts	44	3.8%			44	5.6%
AGE						
< 30	93	8.1%	1	0.3%	92	11.8%
30 - 39	190	16.5%	46	12.3%	144	18.5%
40 - 49	279	24.2%	77	20.5%	202	25.9%
50 - 59	327	28.3%	104	27.7%	223	28.6%
60 - 69	218	18.9%	122	32.5%	96	12.3%
70 +	47	4.1%	25	6.7%	22	2.8%
Average Age	49	N/A	63	N/A	57	N/A
PART TIME EMPLOYEES	49	N/A	21	N/A	28	N/A
ADJUNCT FACULTY	894	N/A	894	N/A		

\* Numbers represent full-time faculty and staff only, unless otherwise noted.

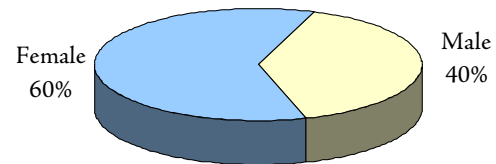
Additional information is available online at <http://ir.kean.edu>.



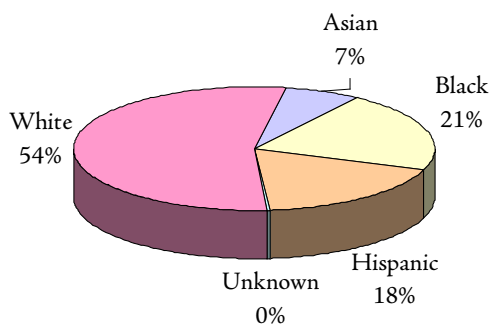
**FULL-TIME EMPLOYEES  
BY GENDER**



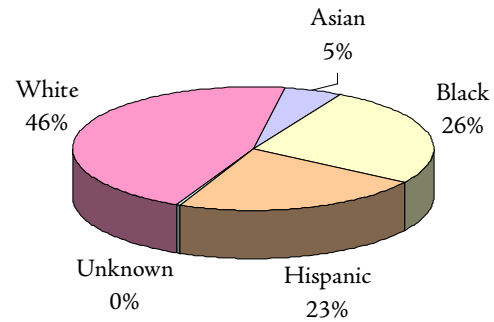
**FULL-TIME STAFF  
BY GENDER**



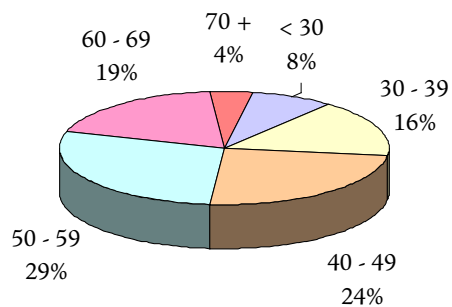
**FULL-TIME EMPLOYEES  
BY RACE / ETHNICITY**



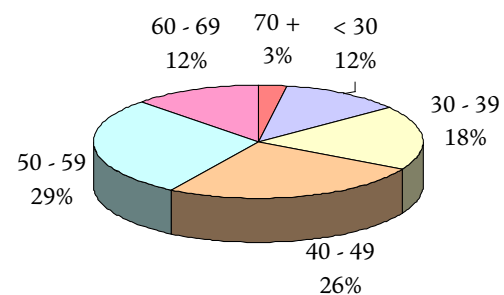
**FULL-TIME STAFF  
BY RACE / ETHNICITY**



**FULL-TIME EMPLOYEES  
BY AGE GROUP**



**FULL-TIME STAFF  
BY AGE GROUP**



The charts for full-time faculty are located in the “Faculty” section.





# Kean University

## *Faculty*

Page 38	At-a-Glance
Page 40	Faculty Trends
Page 42	Full-Time Faculty by Department College of Business and Public Administration College of Education
Page 43	Full-Time Faculty by Department College of Humanities and Social Sciences College of Natural, Applied, and Health Sciences
Page 44	Full-Time Faculty by Department School of Visual and Performing Arts Nathan Weiss Graduate College
Page 45	Distribution of Full-Time Faculty by Age

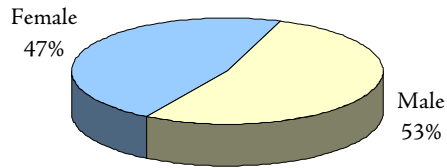
## Fall 2007 Faculty Demographics

	UNIVERSITY		COLLEGES					
	TOTAL	%	BPA	EDU	HSS	NAHS	NWGC	VPA
TOTAL FULL-TIME	375	100.0%	49	78	109	78	16	45
GENDER								
Male	199	53.1%	32	27	56	46	12	26
Female	176	46.9%	17	51	53	32	4	19
RACE / ETHNICITY								
Black	40	10.7%	5	10	14	4	4	3
Hispanic	30	8.0%	5	9	10	3	1	2
Asian	38	10.1%	9	2	8	16	1	2
White	264	70.4%	30	55	77	54	10	38
Unknown	3	0.8%	0	2	0	1	0	0
TENURE STATUS								
Tenured	272	72.5%	33	56	89	56	4	34
Tenure Track	91	24.3%	16	17	18	18	11	11
Not on Tenure Track	12	3.2%	0	5	2	4	1	0
RANK								
Professor	138	36.8%	17	27	49	28	1	16
Associate Professor	90	24.0%	17	18	19	16	6	14
Assistant Professor	143	38.1%	15	30	40	34	9	15
Instructor	4	1.1%	0	3	1	0	0	0
EDUCATION								
Highest Degree								
Doctorate	315	84.0%	41	70	105	63	15	21
Master's	60	16.0%	8	8	4	15	1	24
Terminal Degree in Field	335	89.3%	43	71	107	63	15	36
AGE								
Average Age	54	N/A	54	58	56	50	48	51
Faculty >= 60	147	39.2%	21	42	44	24	4	12
PART-TIME FACULTY	21	N/A	1	19	1	0	0	0
ADJUNCT FACULTY	894	N/A						

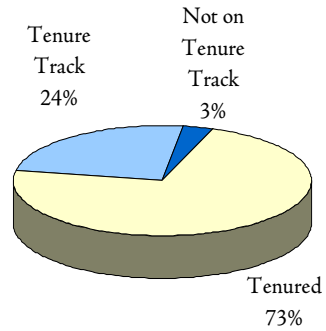
\* Numbers represent full-time faculty only, unless otherwise noted.

Additional information is available online at <http://ir.kean.edu>.

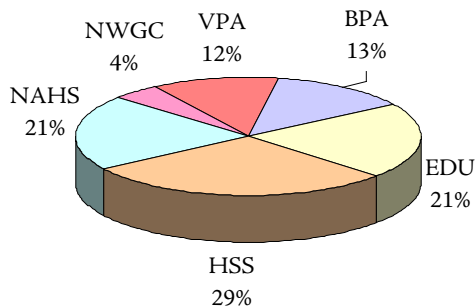
**FULL-TIME FACULTY  
BY GENDER**



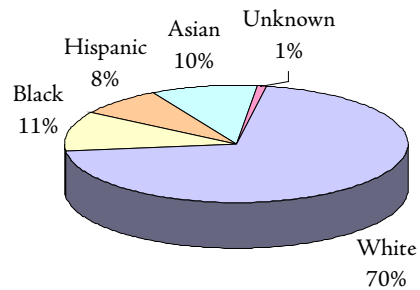
**FULL-TIME FACULTY  
BY TENURE STATUS**



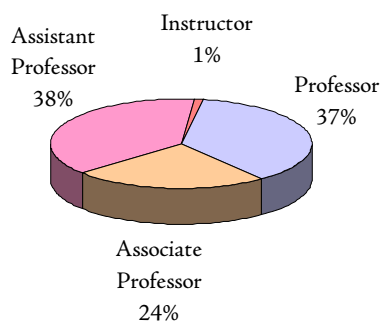
**FULL-TIME FACULTY  
BY COLLEGE**



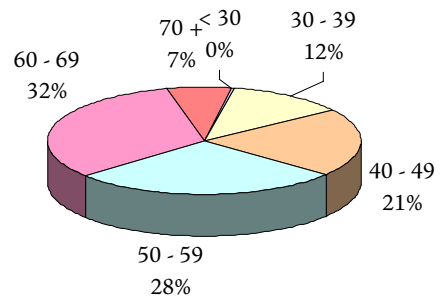
**FULL-TIME FACULTY  
BY RACE / ETHNICITY**



**FULL-TIME FACULTY  
BY RANK**



**FULL-TIME FACULTY  
BY AGE GROUP**

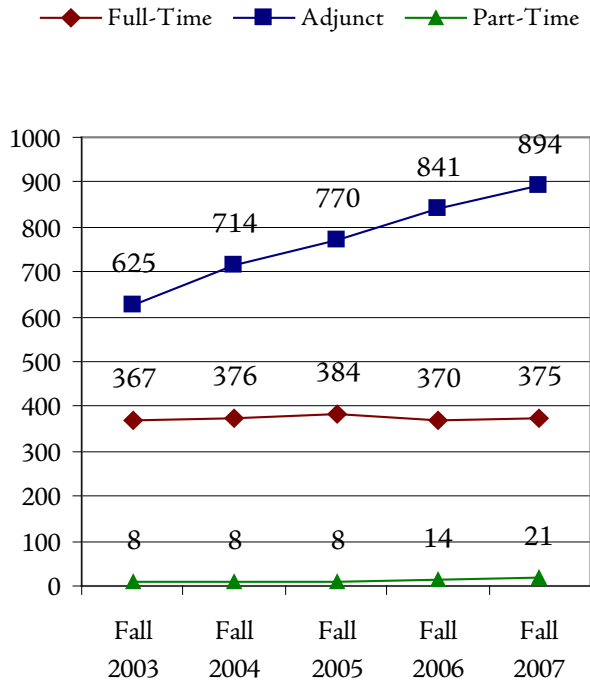


# Faculty Trends (Fall 2003 - Fall 2007)

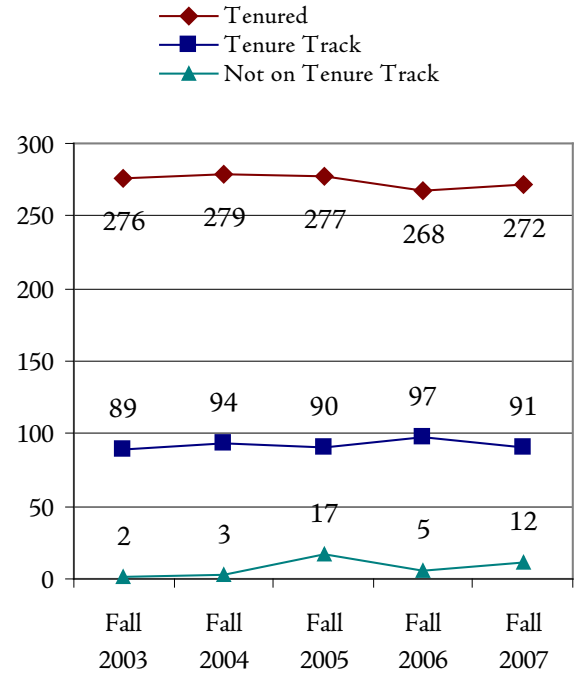
	FALL 2003	FALL 2004	Fall 2005	Fall 2006	Fall 2007	1-YEAR CHANGE	5-YEAR CHANGE
TOTAL FULL=TIME	367	376	384	370	375	1.4%	2.2%
GENDER							
Male	198	205	208	199	199	0.0%	0.5%
Female	169	171	176	171	176	2.9%	4.1%
RACE / ETHNICITY							
Black	38	38	41	41	40	-2.4%	5.3%
Hispanic	24	26	30	31	30	-3.2%	25.0%
Asian	32	32	28	28	38	35.7%	18.8%
White	273	277	282	268	264	-1.5%	-3.3%
Unknown	0	3	3	2	3	50.0%	
TENURE STATUS							
Tenured	276	279	277	268	272	1.5%	-1.4%
Tenure Track	89	94	90	97	91	-6.2%	2.2%
Not on Tenure Track	2	3	17	5	12	140.0%	500.0%
RANK							
Professor	150	148	147	144	138	-4.2%	-8.0%
Associate Professor	90	97	98	93	90	-3.2%	0.0%
Assistant Professor	127	131	136	129	143	10.9%	12.6%
Instructor	0	0	3	4	4	0.0%	
EDUCATION							
Highest Degree							
Doctorate	303	314	317	311	315	1.3%	4.0%
Master's	64	61	65	59	60	1.7%	-6.3%
Bachelor's	0	1	1	0	0		
Unknown	0	0	1	0	0		
Terminal Degree in Field	323	340	340	334	335	0.3%	3.7%
AGE							
Average Age	53.82	54.32	54.68	55.03	54.42	-1.1%	1.1%
Faculty >= 60	118	129	139	146	147	0.7%	24.6%
PART-TIME FACULTY	8	8	8	14	21	50.0%	162.5%
ADJUNCT FACULTY	625	714	770	841	894	6.3%	43.0%
* Numbers represent full-time faculty only, unless otherwise noted.							
** 4-Year Change							



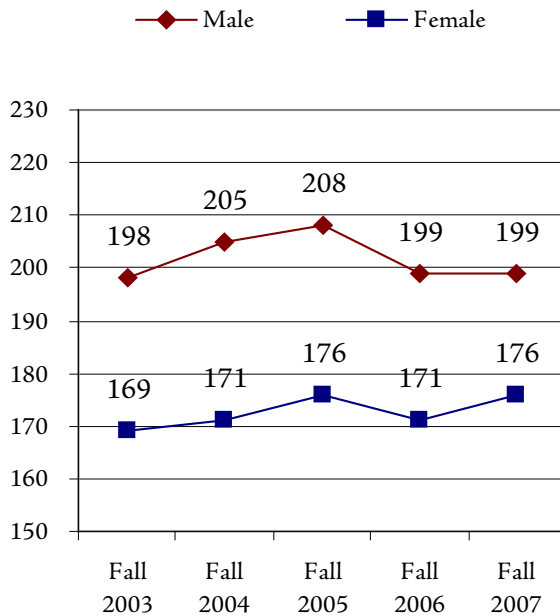
### FACULTY COUNT FALL 2003 - FALL 2007



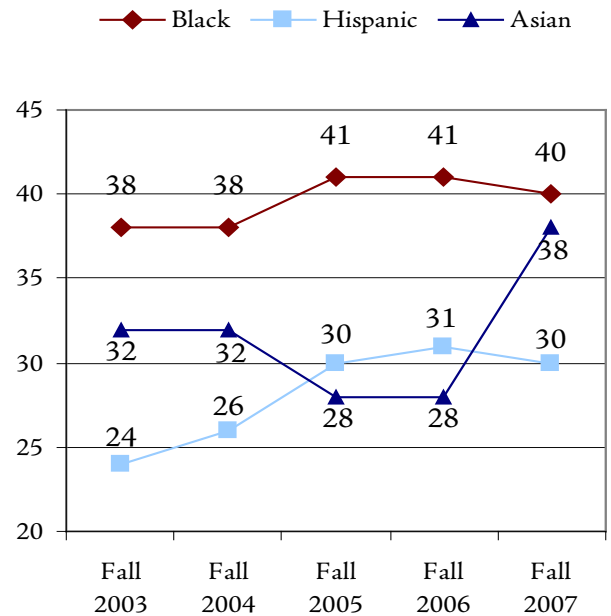
### TENURE STATUS FALL 2003 - FALL 2007



### GENDER FALL 2003 - FALL 2007



### MINORITY FACULTY COUNT FALL 2003 - FALL 2007



## Full-Time Faculty by Department College of Business and Public Administration

	FALL 2003	FALL 2004	FALL 2005	FALL 2006	FALL 2007	1-YEAR CHANGE	5-YEAR CHANGE
<b>NUMBER OF FACULTY</b>							
Accounting	7	9	9	9	8	-11.1%	14.3%
Economics/Finance	11	10	10	10	11	10.0%	0.0%
Management	13	12	13	10	12	20.0%	-7.7%
Marketing	4	5	6	5	5	0.0%	25.0%
Public Adm	8	8	7	7	7	0.0%	-12.5%
Criminal Justice	3	4	5	5	6	20.0%	100.0%
BPA Faculty Total:	46	48	50	46	49	6.5%	6.5%

## Full-Time Faculty by Department College of Education

	FALL 2003	FALL 2004	FALL 2005	FALL 2006	FALL 2007	1-YEAR CHANGE	5-YEAR CHANGE
<b>NUMBER OF FACULTY</b>							
Comm Disorder/Deaf	8	9	9	8	8	0.0%	0.0%
Comm Sci/Edu Svcs	11	11	11	10	11	10.0%	0.0%
Early Childhd/Family	11	8	10	11	10	-9.1%	-9.1%
Phys Ed/Rec/Health	17	17	18	17	16	-5.9%	-5.9%
Elem Mid Sec Edu	21	21	22	21	19	-9.5%	-9.5%
Spec Edu/Indv Serv	11	11	10	9	9	0.0%	-18.2%
Counselor Edu	5	5	5	5	5	0.0%	0.0%
EDU Other	0	0	2	3	0	-100.0%	
EDU Faculty Total:	84	82	87	84	78	-7.1%	-7.1%

## Full-Time Faculty by Department College of Humanities and Social Sciences

	FALL 2003	FALL 2004	FALL 2005	FALL 2006	FALL 2007	1-YEAR CHANGE	5-YEAR CHANGE
<b>NUMBER OF FACULTY</b>							
<b>Communication</b>	11	7	7	7	7	0.0%	-36.4%
<b>English</b>	25	26	25	25	25	0.0%	0.0%
<b>Foreign Languages</b>	7	7	7	7	8	14.3%	14.3%
<b>History</b>	9	12	12	11	12	9.1%	33.3%
<b>Philosophy/Religion</b>	7	7	7	7	7	0.0%	0.0%
<b>Political Science</b>	8	7	7	7	7	0.0%	-12.5%
<b>Psychology</b>	20	21	21	19	20	5.3%	0.0%
<b>Social Work</b>	10	10	11	11	11	0.0%	10.0%
<b>Sociology/Anthropology</b>	12	12	12	12	12	0.0%	0.0%
<b>HSS Faculty Total:</b>	<b>109</b>	<b>109</b>	<b>109</b>	<b>106</b>	<b>109</b>	<b>2.8%</b>	<b>0.0%</b>

## Full-Time Faculty by Department College of Natural, Applied, and Health Sciences

	FALL 2003	FALL 2004	FALL 2005	FALL 2006	FALL 2007	1-YEAR CHANGE	5-YEAR CHANGE
<b>NUMBER OF FACULTY</b>							
<b>Biological Sciences</b>	15	14	15	13	14	7.7%	-6.7%
<b>Chemistry/Physics</b>	13	12	11	12	11	-8.3%	-15.4%
<b>Geology/Meteorology</b>	8	9	9	10	11	10.0%	37.5%
<b>Health Info Mgmt</b>	3	2	2	2	1	-50.0%	-66.7%
<b>Nursing</b>	8	6	7	7	9	28.6%	12.5%
<b>Occupational Therapy</b>	5	5	3	3	4	33.3%	-20.0%
<b>Mathematics</b>	12	12	12	12	13	8.3%	8.3%
<b>Computer Science</b>	19	20	17	14	15	7.1%	-21.1%
<b>NAHS Faculty Total:</b>	<b>83</b>	<b>80</b>	<b>76</b>	<b>73</b>	<b>78</b>	<b>6.8%</b>	<b>-6.0%</b>

### Full-Time Faculty by Department School of Visual and Performing Arts

	FALL 2003	FALL 2004	FALL 2005	FALL 2006	FALL 2007	1-YEAR CHANGE	5-YEAR CHANGE
<b>NUMBER OF FACULTY</b>							
<b>Design</b>	12	13	14	14	13	-7.1%	8.3%
<b>Fine Arts</b>	14	17	17	16	14	-12.5%	0.0%
<b>Music</b>	8	8	8	7	7	0.0%	-12.5%
<b>Theatre</b>	5	6	6	6	6	0.0%	20.0%
<b>Media &amp; Film</b>	0	4	5	5	5	0.0%	
<b>VPA Faculty Total:</b>	<b>39</b>	<b>48</b>	<b>50</b>	<b>48</b>	<b>45</b>	<b>-6.3%</b>	<b>15.4%</b>

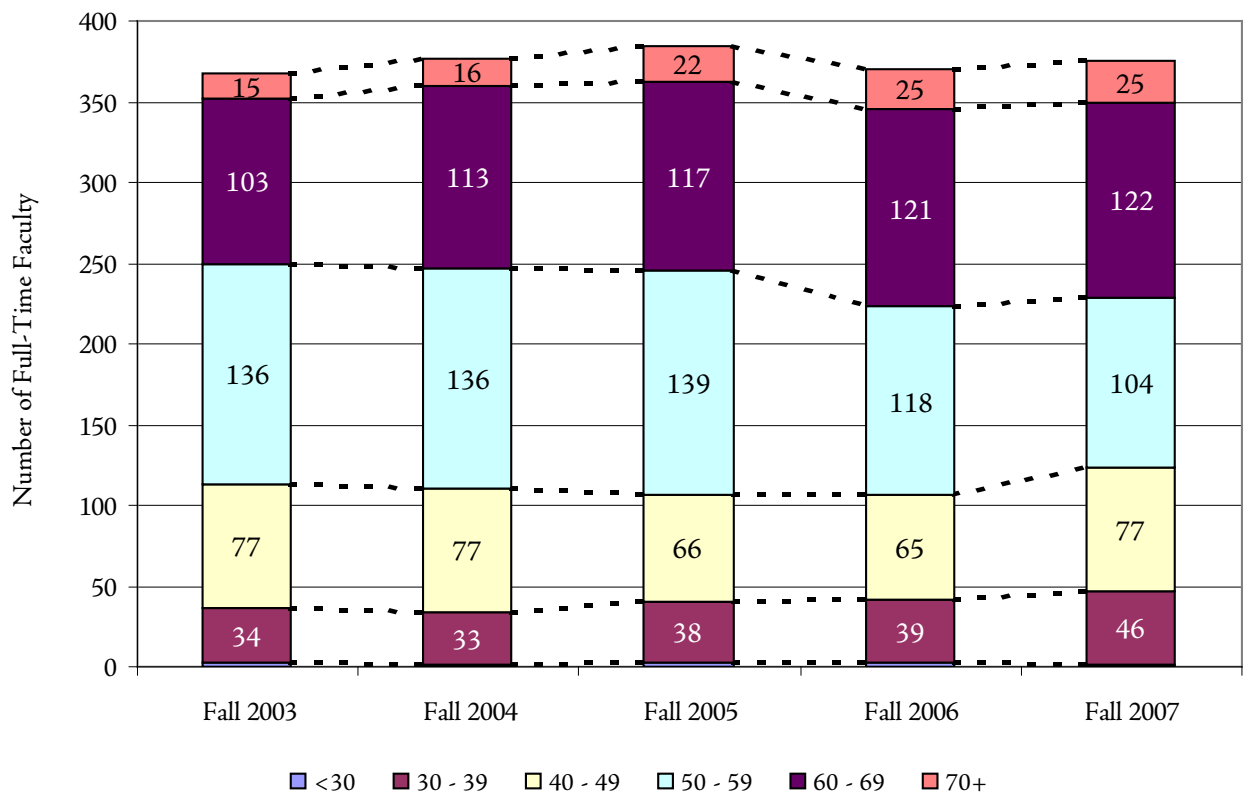
### Full-Time Faculty by Department Nathan Weiss Graduate College

	FALL 2003	FALL 2004	FALL 2005	FALL 2006	FALL 2007	1-YEAR CHANGE	5-YEAR CHANGE
<b>NUMBER OF FACULTY</b>							
<b>Edu Leadership</b>	6	6	5	5	7	40.0%	16.7%
<b>Grad Mgmt Studies</b>	0	0	2	3	3	0.0%	
<b>Sci &amp; Tech Edu</b>	0	3	5	5	6	20.0%	
<b>NWGC Faculty Total:</b>	<b>6</b>	<b>9</b>	<b>12</b>	<b>13</b>	<b>16</b>	<b>23.1%</b>	<b>166.7%</b>

## Distribution of Full-Time Faculty by Age

	FALL 2003	FALL 2004	FALL 2005	FALL 2006	FALL 2007		5-YEAR CHANGE
					No.	%	
AGE							
< 30	2	1	2	2	1	0.3%	-50.0%
30 - 39	34	33	38	39	46	12.3%	35.3%
40 - 49	77	77	66	65	77	20.5%	0.0%
50 - 59	136	136	139	118	104	27.7%	-23.5%
60 - 69	103	113	117	121	122	32.5%	18.4%
70 +	15	16	22	25	25	6.7%	66.7%
TOTAL	367	376	384	370	375	100.0%	2.2%
AVERAGE AGE	53.82	54.32	54.68	55.03	54.42		1.1%

## Distribution of Full-Time Faculty by Age Group Fall 2003 - Fall 2007





Office of Institutional Research  
Kean University  
1000 Morris Avenue  
Union, New Jersey 07083  
<http://ir.kean.edu>  
908.737.3470