



Kean University

*Student and  
Faculty Profile*

Fall 2006

Office of Institutional Research

## *Quick Facts*

Founded:	1855	President:	Dr. Dawood Farahi
Campus Size:	155.0 acres	Mailing Address:	1000 Morris Avenue
Main Campus:	121.5 acres		Union, New Jersey 07083
East Campus:	28.5 acres	Main Phone:	(908) 737-KEAN (908) 737-5326
Number of Colleges:	6		
Degree Programs Offered:		Admissions:	(908) 737-7100
Undergraduate Programs	50	Public Info:	(908) 737-NEWS (908) 737-6397
Graduate Programs	31		
Average Class Size:	19		
Student/Faculty Ratio:	15:1		
2006-2007 Tuition and Fees: (full-time, in-state, undergraduate)	\$8,035.50		
2006-2007 Tuition and Fees: (full-time, in-state, graduate)	\$11,108.40		

## *Contents*

<i>Enrollment</i> .....	<i>Page 01</i>
<i>Degrees Conferred</i> .....	<i>Page 17</i>
<i>Employees</i> .....	<i>Page 27</i>
<i>Faculty</i> .....	<i>Page 31</i>



# Kean University

## *Enrollment*

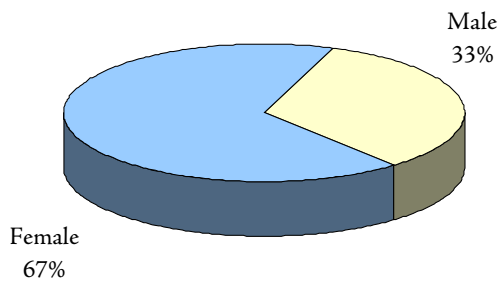
Page 02	At-a-Glance
Page 04	Enrollment Trends
Page 06	Enrollment by Geographic Origin
Page 08	Retention & Graduation Rates
Page 10	Enrollment by Department and Program Nathan Weiss Graduate College College of Business and Public Administration
Page 11	Enrollment by Department and Program College of Education
Page 12	Enrollment by Department and Program College of Humanities and Social Sciences
Page 13	Enrollment by Department and Program College of Natural, Applied, and Health Sciences
Page 14	Enrollment by Department and Program School of Visual and Performing Arts
Page 15	Second Majors by Program

## Fall 2006 Enrollment At-a-Glance

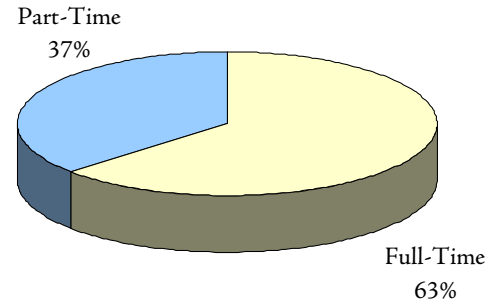
	UNIVERSITY		UNDERGRADUATE		GRADUATE	
	No.	%	No.	%	No.	%
<b>ENROLLMENT</b>						
Headcount	13,050	100%	9,990	100%	3,060	100%
F.T.E.	9451.7		7979.7		1472.0	
<b>GENDER</b>						
Male	4,343	33.3%	3,654	36.6%	689	22.5%
Female	8,707	66.7%	6,336	63.4%	2,371	77.5%
<b>RACE / ETHNICITY</b>						
Black	2,525	19.3%	2,002	20.0%	523	17.1%
Hispanic	2,271	17.4%	1,930	19.3%	341	11.1%
Asian	810	6.2%	672	6.7%	138	4.5%
White	6,866	52.6%	4,921	49.3%	1,945	63.6%
Unknown	578	4.4%	465	4.7%	113	3.7%
<b>ATTENDANCE STATUS</b>						
Full-Time	8,250	63.2%	7,597	76.0%	653	21.3%
Part-Time	4,800	36.8%	2,393	24.0%	2,407	78.7%
<b>ADMISSIONS STATUS</b>						
Regular	6,488	49.7%	4,172	41.8%	2,316	75.7%
Special	517	4.0%	517	5.2%		
E.O.F.	834	6.4%	834	8.3%		
Transfer	4,125	31.6%	4,125	41.3%		
E.O.F. Transfer	207	1.6%	207	2.1%		
Other	879	6.7%	135	1.4%	744	24.3%
<b>REGISTRATION STATUS</b>						
First-Time	2,724	20.9%	1,497	15.0%	1,227	40.1%
Transfer	1,256	9.6%	1,256	12.6%		
Stop-out / Readmit	444	3.4%	444	4.4%		
Continuing	8,626	66.1%	6,793	68.0%	1,833	59.9%
<b>AGE</b>						
<25	7,425	56.9%	6,970	69.8%	455	14.9%
25 - 34	3,048	23.4%	1,709	17.1%	1,339	43.8%
35 - 44	1,395	10.7%	814	8.1%	581	19.0%
45 - 54	930	7.1%	407	4.1%	523	17.1%
55+	252	1.9%	90	0.9%	162	5.3%
Average Age	27.27		24.94		34.87	
<b>MATRICULATION STATUS</b>						
Degree Seeking	11,600	88.9%	9,650	96.6%	1,950	63.7%
Certificate / Non-Degree	613	4.7%	249	2.5%	364	11.9%
Non-matriculated	837	6.4%	91	0.9%	746	24.4%
<b>STATE RESIDENCE</b>						
New Jersey	12,544	96.1%	9,636	96.5%	2,908	95.0%
Out-of-State	237	1.8%	161	1.6%	76	2.5%
International	268	2.1%	192	1.9%	76	2.5%
Not Reported	1	0.0%	1	0.0%	0	0.0%

Additional information is available online at <http://ir.kean.edu>.

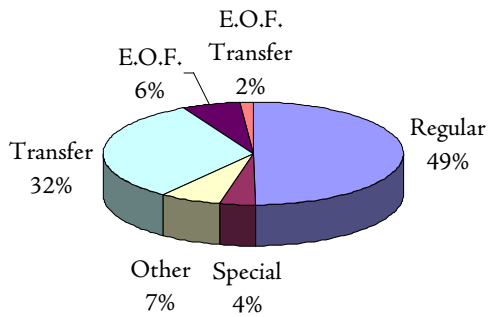
**DISTRIBUTION OF STUDENTS  
BY GENDER**



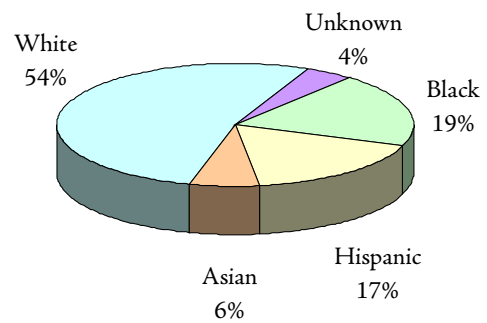
**DISTRIBUTION OF STUDENTS  
BY ATTENDANCE STATUS**



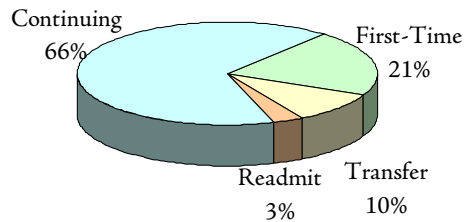
**DISTRIBUTION OF STUDENTS  
BY ADMIT STATUS**



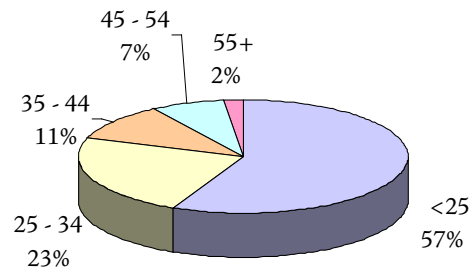
**DISTRIBUTION OF STUDENTS  
BY ETHNICITY**



**DISTRIBUTION OF STUDENTS  
BY REGISTRATION STATUS**



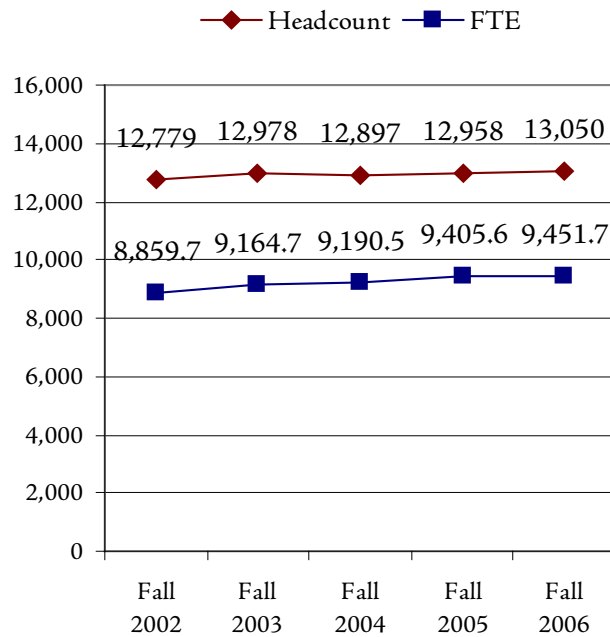
**DISTRIBUTION OF STUDENTS  
BY AGE GROUP**



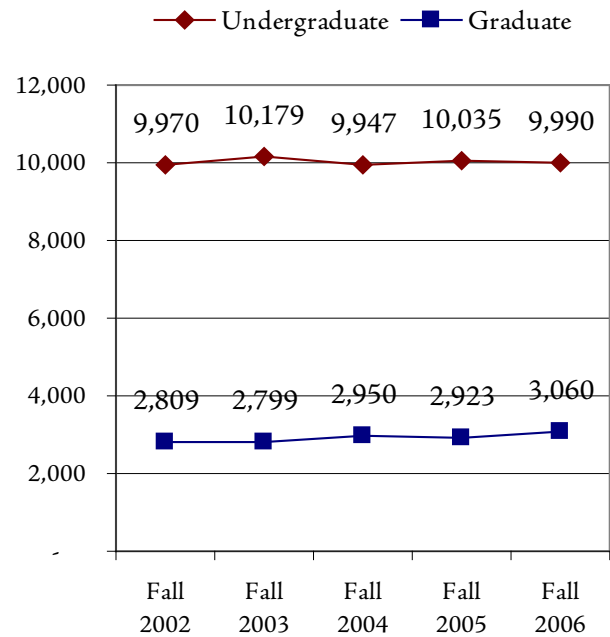
## Enrollment Trends (Fall 2002 - Fall 2006)

	FALL 2002	FALL 2003	FALL 2004	FALL 2005	FALL 2006	1 YEAR CHANGE	5 YEAR CHANGE
<b>ENROLLMENT</b>							
Headcount	12,779	12,978	12,897	12,958	13,050	0.7%	2.1%
F.T.E.	8859.7	9164.7	9190.5	9405.6	9451.7	0.5%	6.7%
Undergraduate	9,970	10,179	9,947	10,035	9,990	-0.4%	0.2%
Graduate	2,809	2,799	2,950	2,923	3,060	4.7%	8.9%
<b>GENDER</b>							
Male	4,192	4,268	4,179	4,322	4,343	0.5%	3.6%
Female	8,587	8,710	8,718	8,636	8,707	0.8%	1.4%
<b>RACE / ETHNICITY</b>							
Black	2,589	2,617	2,640	2,701	2,525	-6.5%	-2.5%
Hispanic	2,271	2,403	2,268	2,312	2,271	-1.8%	0.0%
Asian	827	812	830	831	810	-2.5%	-2.1%
White	6,579	6,699	6,756	6,657	6,866	3.1%	4.4%
Unknown	513	447	403	457	578	26.5%	12.7%
<b>ATTENDANCE STATUS</b>							
Full-Time	7,582	7,950	7,936	8,204	8,250	0.6%	8.8%
Part-Time	5,197	5,028	4,961	4,754	4,800	1.0%	-7.6%
<b>ADMISSIONS STATUS</b>							
Regular	6,041	6,338	6,450	6,583	6,488	-1.4%	7.4%
Special	576	552	526	514	517	0.6%	-10.2%
E.O.F.	920	895	846	873	834	-4.5%	-9.3%
Transfer	4,016	4,079	3,990	3,966	4,125	4.0%	2.7%
E.O.F. Transfer	280	288	238	223	207	-7.2%	-26.1%
Other	946	826	847	799	879	10.0%	-7.1%
<b>REGISTRATION STATUS</b>							
First-Time	2,536	2,515	2,441	2,585	2,724	5.4%	7.4%
Transfer	1,217	1,178	1,071	992	1,256	26.6%	3.2%
Stop-out / Readmit	507	612	545	498	444	-10.8%	-12.4%
Continuing	8,519	8,673	8,840	8,883	8,626	-2.9%	1.3%
<b>AGE</b>							
<25	6,791	6,936	6,898	7,208	7,425	3.0%	9.3%
25 - 34	3,332	3,382	3,274	3,172	3,048	-3.9%	-8.5%
35 - 44	1,491	1,502	1,540	1,446	1,395	-3.5%	-6.4%
45 - 54	962	947	949	896	930	3.8%	-3.3%
55+	181	211	235	236	252	6.8%	39.2%
Not Reported	22	0	1	0	0		-100.0%
Average Age	27.63	27.55	27.71	27.35	27.27	-0.3%	-1.3%
<b>MATRICULATION STATUS</b>							
Degree Seeking	11,299	11,483	11,331	11,569	11,600	0.3%	2.7%
Certificate / Non-Degree	621	758	725	644	613	-4.8%	-1.3%
Non-matriculated	859	737	841	745	837	12.3%	-2.6%
<b>STATE RESIDENCE</b>							
New Jersey	12,149	12,407	12,382	12,469	12,544	0.6%	3.3%
Out-of-State	210	197	194	201	237	17.9%	12.9%
International	420	374	321	287	268	-6.6%	-36.2%
Not Reported	0	0	0	1	1	0.0%	

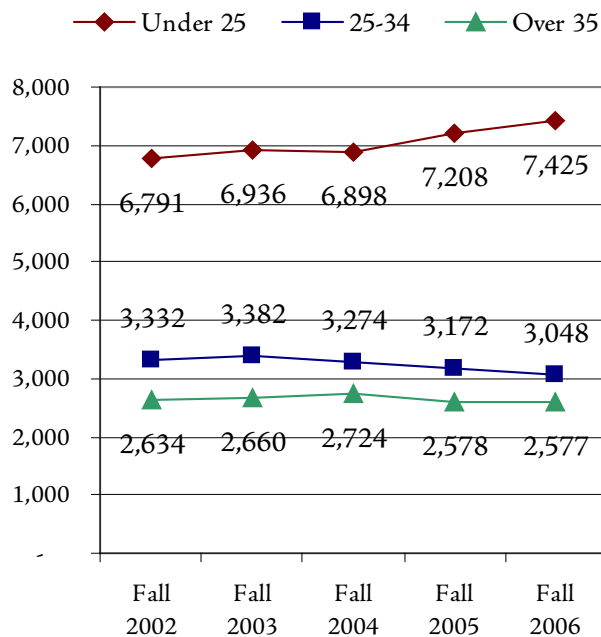
### HEADCOUNT & FTE FALL 2002 - FALL 2006



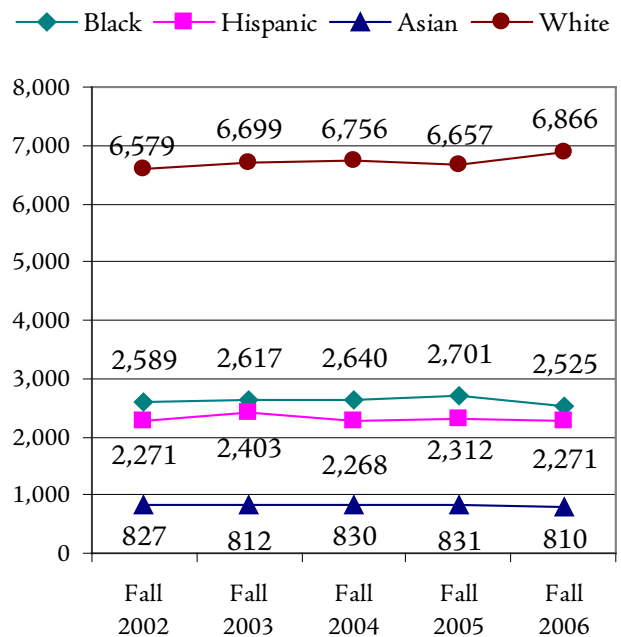
### UNDERGRADUATE & GRADUATE FALL 2002 - FALL 2006



### AGE GROUP FALL 2002 - FALL 2006



### RACE / ETHNICITY FALL 2002 - FALL 2006



## Enrollment by Geographic Origin

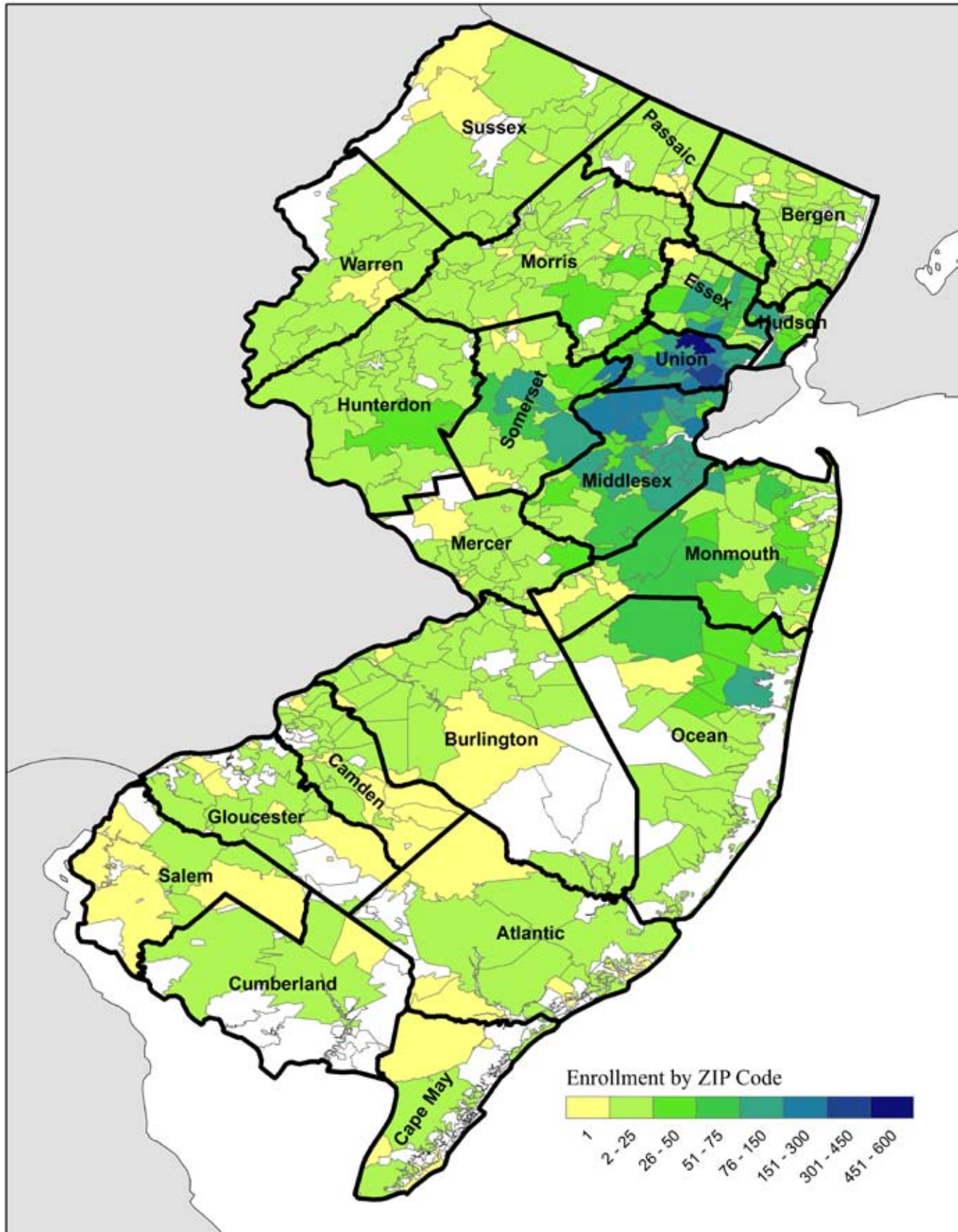
	FALL 2002	FALL 2003	FALL 2004	FALL 2005	FALL 2006		5-YEAR CHANGE
					No.	%	
<b>NEW JERSEY RESIDENTS</b>	<b>12,149</b>	<b>12,407</b>	<b>12,382</b>	<b>12,469</b>	<b>12,544</b>	<b>96.1%</b>	<b>3.3%</b>
Union	4,147	4,049	3,843	3,849	3,633	27.8%	-12.4%
Middlesex	2,560	2,892	2,993	3,101	3,000	23.0%	17.2%
Essex	1,669	1,683	1,671	1,681	1,518	11.6%	-9.0%
Monmouth	936	962	1,016	942	925	7.1%	-1.2%
Somerset	368	401	387	396	694	5.3%	88.6%
Ocean	230	235	280	277	521	4.0%	126.5%
Hudson	554	553	486	480	504	3.9%	-9.0%
Bergen	390	400	408	439	440	3.4%	12.8%
Morris	394	383	408	427	390	3.0%	-1.0%
Passaic	295	266	269	246	245	1.9%	-16.9%
Hunterdon	73	80	82	101	126	1.0%	72.6%
Mercer	133	128	108	114	118	0.9%	-11.3%
Burlington	98	101	101	115	114	0.9%	16.3%
Camden	66	53	63	58	69	0.5%	4.5%
Warren	65	58	65	60	62	0.5%	-4.6%
Sussex	63	56	72	65	48	0.4%	-23.8%
Atlantic	51	46	46	53	54	0.4%	5.9%
Gloucester	17	17	19	23	34	0.3%	100.0%
Cape May	16	15	16	18	25	0.2%	56.3%
Cumberland	17	20	19	16	14	0.1%	-17.6%
Salem	7	9	8	8	9	0.1%	28.6%
County Unknown	0	0	22	0	1	0.0%	
<b>NON-RESIDENTS</b>	<b>210</b>	<b>197</b>	<b>194</b>	<b>201</b>	<b>237</b>	<b>1.8%</b>	<b>12.9%</b>
New York	152	143	138	140	163	1.2%	7.2%
Pennsylvania	27	27	26	24	35	0.3%	29.6%
Other	31	27	30	37	39	0.3%	25.8%
<b>INTERNATIONAL</b>	<b>420</b>	<b>374</b>	<b>321</b>	<b>287</b>	<b>268</b>	<b>2.1%</b>	<b>-36.2%</b>
<b>NOT REPORTED</b>	<b>0</b>	<b>0</b>	<b>0</b>	<b>1</b>	<b>1</b>	<b>0.0%</b>	
<b>TOTAL</b>	<b>12,779</b>	<b>12,978</b>	<b>12,897</b>	<b>12,958</b>	<b>13,050</b>	<b>100.0%</b>	<b>2.1%</b>

### Top 10 Countries of Citizenship for International Students (in alphabetical order)

Bermuda	Nigeria
Columbia	Pakistan
India	People's Republic of China
Jamaca	Poland
Kenya	Trinidad and Tobago

International students come from 71 different countries and areas.

# Fall 2006 Enrollment by ZIP Code



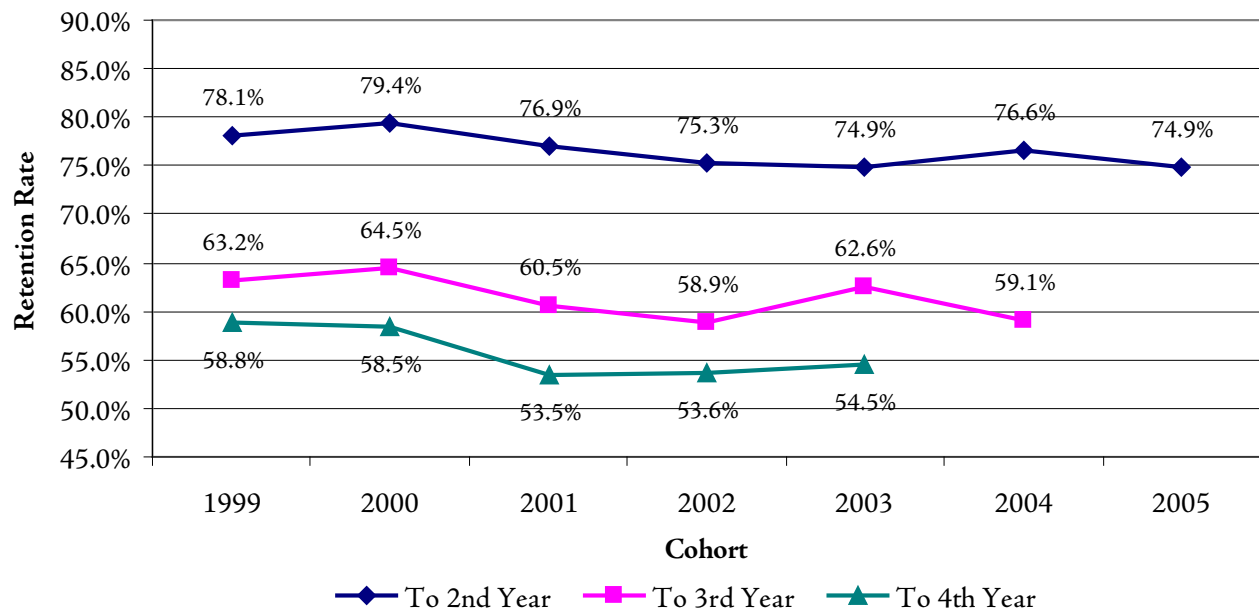
### First-Time, Full-Time Freshmen Retention Rates

COHORT YEAR	HEAD COUNT	# CONTINUED			% CONTINUED		
		TO 2ND YEAR	TO 3RD YEAR	TO 4TH YEAR	TO 2ND YEAR	TO 3RD YEAR	TO 4TH YEAR
1996	984	782	634	570	79.47%	64.43%	57.93%
1997	872	689	571	525	79.01%	65.48%	60.21%
1998	1,034	817	682	618	79.01%	65.96%	59.77%
1999	999	780	631	587	78.08%	63.16%	58.76%
2000	1,161	922	749	679	79.41%	64.51%	58.48%
2001	1,132	871	685	605	76.94%	60.51%	53.45%
2002	1,317	991	776	706	75.25%	58.92%	53.61%
2003	1,311	982	821	714	74.90%	62.62%	54.46%
2004	1,254	961	741	0	76.63%	59.09%	0.00%
2005	1,391	1,042	0	0	74.91%	0.00%	0.00%

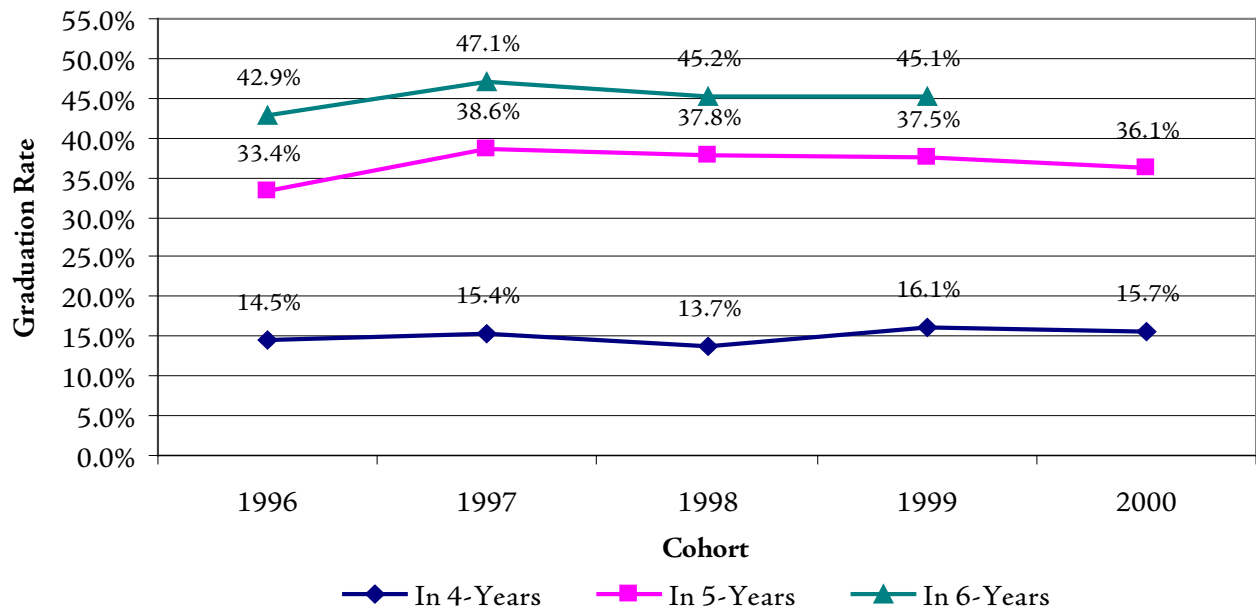
### First-Time, Full-Time Freshmen Graduation Rates

COHORT YEAR	HEAD COUNT	# GRADUATED			% GRADUATED		
		IN 4 YEARS	IN 5 YEARS	IN 6 YEARS	IN 4 YEARS	IN 5 YEARS	IN 6 YEARS
1996	984	143	329	422	14.53%	33.43%	42.89%
1997	872	134	337	411	15.37%	38.65%	47.13%
1998	1,034	142	391	467	13.73%	37.81%	45.16%
1999	999	161	375	451	16.12%	37.54%	45.15%
2000	1,161	182	419	419	15.68%	36.09%	36.09%

## First-Time, Full-Time Freshmen Retention Rates 1999 - 2005 Cohorts



## First-Time, Full-Time Freshmen Graduation Rates 1995 - 2000 Cohorts



## Enrollment by Department and Program Nathan Weiss Graduate College

	FALL 2002	FALL 2003	FALL 2004	FALL 2005	FALL 2006	1-YEAR CHANGE	5-YEAR CHANGE
<b>ENROLLMENT</b>							
<b>Grad Mgmt Studies</b>							
MBA in Global Management (GR)	0	0	0	20	42	110.0%	
MIS (GR)	91	61	39	34	34	0.0%	-62.6%
<b>Grad Mgmt Studies Total:</b>	<b>91</b>	<b>61</b>	<b>39</b>	<b>54</b>	<b>76</b>	<b>40.7%</b>	<b>-16.5%</b>
<b>Sci &amp; Tech Edu</b>							
Biotechnology (GR)	18	14	14	21	21	0.0%	16.7%
Science & Tech. (UG)	0	0	0	16	68	325.0%	
<b>Sci &amp; Tech Edu Total:</b>	<b>18</b>	<b>14</b>	<b>14</b>	<b>37</b>	<b>89</b>	<b>140.5%</b>	<b>394.4%</b>
<i>NWGC UG Total:</i>	<i>0</i>	<i>0</i>	<i>0</i>	<i>16</i>	<i>68</i>	<i>325.0%</i>	
<i>NWGC GR Total:</i>	<i>109</i>	<i>75</i>	<i>53</i>	<i>75</i>	<i>97</i>	<i>29.3%</i>	<i>-11.0%</i>
<b>NWGC Total:</b>	<b>109</b>	<b>75</b>	<b>53</b>	<b>91</b>	<b>165</b>	<b>81.3%</b>	<b>51.4%</b>

## Enrollment by Department and Program College of Business and Public Administration

	FALL 2002	FALL 2003	FALL 2004	FALL 2005	FALL 2006	1-YEAR CHANGE	5-YEAR CHANGE
<b>ENROLLMENT</b>							
<b>Accounting</b>							
Accounting (UG)	413	399	422	399	368	-7.8%	-10.9%
Accounting (GR)	66	75	83	91	88	-3.3%	33.3%
<b>Accounting Total:</b>	<b>479</b>	<b>474</b>	<b>505</b>	<b>490</b>	<b>456</b>	<b>-6.9%</b>	<b>-4.8%</b>
<b>Criminal Justice</b>							
Criminal Justice (UG)	431	448	481	513	530	3.3%	23.0%
<b>Criminal Justice Total:</b>	<b>431</b>	<b>448</b>	<b>481</b>	<b>513</b>	<b>530</b>	<b>3.3%</b>	<b>23.0%</b>
<b>Economics/Finance</b>							
Economics (UG)	140	152	149	178	175	-1.7%	25.0%
Finance (UG)	206	198	186	166	149	-10.2%	-27.7%
<b>Economics/Finance Total:</b>	<b>346</b>	<b>350</b>	<b>335</b>	<b>344</b>	<b>324</b>	<b>-5.8%</b>	<b>-6.4%</b>
<b>Management</b>							
Management Sci. (UG)	781	790	745	733	669	-8.7%	-14.3%
<b>Management Total:</b>	<b>781</b>	<b>790</b>	<b>745</b>	<b>733</b>	<b>669</b>	<b>-8.7%</b>	<b>-14.3%</b>
<b>Marketing</b>							
Marketing (UG)	272	281	271	276	284	2.9%	4.4%
<b>Marketing Total:</b>	<b>272</b>	<b>281</b>	<b>271</b>	<b>276</b>	<b>284</b>	<b>2.9%</b>	<b>4.4%</b>
<b>Public Adm</b>							
Public Admin. (UG)	100	116	110	108	105	-2.8%	5.0%
Public Admin. (GR)	134	152	160	169	179	5.9%	33.6%
<b>Public Adm Total:</b>	<b>234</b>	<b>268</b>	<b>270</b>	<b>277</b>	<b>284</b>	<b>2.5%</b>	<b>21.4%</b>
<i>BPA UG Total:</i>	<i>2,343</i>	<i>2,384</i>	<i>2,364</i>	<i>2,373</i>	<i>2,280</i>	<i>-3.9%</i>	<i>-2.7%</i>
<i>BPA GR Total:</i>	<i>200</i>	<i>227</i>	<i>243</i>	<i>260</i>	<i>267</i>	<i>2.7%</i>	<i>33.5%</i>
<b>BPA Total:</b>	<b>2,543</b>	<b>2,611</b>	<b>2,607</b>	<b>2,633</b>	<b>2,547</b>	<b>-3.3%</b>	<b>0.2%</b>

## Enrollment by Department and Program College of Education

	FALL 2002	FALL 2003	FALL 2004	FALL 2005	FALL 2006	1-YEAR CHANGE	5-YEAR CHANGE
<b>ENROLLMENT</b>							
<b>Comm Disorder/Deaf</b>							
Speech Lang. Pathology (GR)	116	114	108	95	103	8.4%	-11.2%
Speech, Lang Hear. Sci. (UG)	126	132	131	119	129	8.4%	2.4%
<b>Comm Disorder/Deaf Total:</b>	<b>242</b>	<b>246</b>	<b>239</b>	<b>214</b>	<b>232</b>	<b>8.4%</b>	<b>-4.1%</b>
<b>Comm Sci/Edu Svcs</b>							
Edu/Media/Spec. (GR)	41	46	34	41	40	-2.4%	-2.4%
Reading Spec. (GR)	75	56	83	100	93	-7.0%	24.0%
<b>Comm Sci/Edu Svcs Total:</b>	<b>116</b>	<b>102</b>	<b>117</b>	<b>141</b>	<b>133</b>	<b>-5.7%</b>	<b>14.7%</b>
<b>Counselor Edu</b>							
Counselor Edu (GR)	198	199	206	230	220	-4.3%	11.1%
<b>Counselor Edu Total:</b>	<b>198</b>	<b>199</b>	<b>206</b>	<b>230</b>	<b>220</b>	<b>-4.3%</b>	<b>11.1%</b>
<b>Early Childhd/Family</b>							
Early Childhood Edu. (UG)	511	553	545	547	570	4.2%	11.5%
Early Childhood Edu. (GR)	134	165	146	126	102	-19.0%	-23.9%
<b>Early Childhd/Family Total:</b>	<b>645</b>	<b>718</b>	<b>691</b>	<b>673</b>	<b>672</b>	<b>-0.1%</b>	<b>4.2%</b>
<b>Edu Leadership</b>							
Edu Admin. (GR)	275	254	283	253	260	2.8%	-5.5%
<b>Edu Leadership Total:</b>	<b>275</b>	<b>254</b>	<b>283</b>	<b>253</b>	<b>260</b>	<b>2.8%</b>	<b>-5.5%</b>
<b>Elem Mid Sec Edu</b>							
Elementary Edu (UG)	740	796	789	840	860	2.4%	16.2%
Instruction & Curriculum (GR)	196	219	230	233	208	-10.7%	6.1%
<b>Elem Mid Sec Edu Total:</b>	<b>936</b>	<b>1,015</b>	<b>1,019</b>	<b>1,073</b>	<b>1,068</b>	<b>-0.5%</b>	<b>14.1%</b>
<b>Phys Ed/Rec/Health</b>							
Exercise Science (GR)	15	14	14	20	23	15.0%	53.3%
Physical Edu (UG)	358	350	385	425	476	12.0%	33.0%
Recreation Admin. (UG)	56	63	58	59	58	-1.7%	3.6%
<b>Phys Ed/Rec/Health Total:</b>	<b>429</b>	<b>427</b>	<b>457</b>	<b>504</b>	<b>557</b>	<b>10.5%</b>	<b>29.8%</b>
<b>Spec Edu/Indv Serv</b>							
Educator of Indivs with Disabilities (UG)	355	387	369	329	214	-35.0%	-39.7%
Special Edu (GR)	180	199	217	231	277	19.9%	53.9%
<b>Spec Edu/Indv Serv Total:</b>	<b>535</b>	<b>586</b>	<b>586</b>	<b>560</b>	<b>491</b>	<b>-12.3%</b>	<b>-8.2%</b>
<b>EDU UG Total:</b>	<b>2,146</b>	<b>2,281</b>	<b>2,277</b>	<b>2,319</b>	<b>2,307</b>	<b>-0.5%</b>	<b>7.5%</b>
<b>EDU GR Total:</b>	<b>1,230</b>	<b>1,266</b>	<b>1,321</b>	<b>1,329</b>	<b>1,326</b>	<b>-0.2%</b>	<b>7.8%</b>
<b>EDU Total:</b>	<b>3,376</b>	<b>3,547</b>	<b>3,598</b>	<b>3,648</b>	<b>3,633</b>	<b>-0.4%</b>	<b>7.6%</b>

## Enrollment by Department and Program

### College of Humanities and Social Sciences

	FALL 2002	FALL 2003	FALL 2004	FALL 2005	FALL 2006	1-YEAR CHANGE	5-YEAR CHANGE
<b>ENROLLMENT</b>							
<b>Communication</b>							
Communication (UG)	315	255	213	200	191	-4.5%	-39.4%
Communication Studies (GR)	0	4	10	12	16	33.3%	
<b>Communication Total:</b>	<b>315</b>	<b>259</b>	<b>223</b>	<b>212</b>	<b>207</b>	<b>-2.4%</b>	<b>-34.3%</b>
<b>English</b>							
English (UG)	237	252	248	281	315	12.1%	32.9%
Holocaust & Genocide (GR)	0	0	0	0	5		
<b>English Total:</b>	<b>237</b>	<b>252</b>	<b>248</b>	<b>281</b>	<b>320</b>	<b>13.9%</b>	<b>35.0%</b>
<b>Foreign Languages</b>							
Spanish (UG)	178	206	207	203	200	-1.5%	12.4%
<b>Foreign Languages Total:</b>	<b>178</b>	<b>206</b>	<b>207</b>	<b>203</b>	<b>200</b>	<b>-1.5%</b>	<b>12.4%</b>
<b>History</b>							
History (UG)	236	303	321	347	397	14.4%	68.2%
<b>History Total:</b>	<b>236</b>	<b>303</b>	<b>321</b>	<b>347</b>	<b>397</b>	<b>14.4%</b>	<b>68.2%</b>
<b>Philosophy/Religion</b>							
Philosophy and Religion (UG)	13	12	14	7	14	100.0%	7.7%
<b>Philosophy/Religion Total:</b>	<b>13</b>	<b>12</b>	<b>14</b>	<b>7</b>	<b>14</b>	<b>100.0%</b>	<b>7.7%</b>
<b>Political Science</b>							
Political Science (UG)	119	114	106	119	100	-16.0%	-16.0%
Political Science (GR)	0	0	4	7	17	142.9%	
<b>Political Science Total:</b>	<b>119</b>	<b>114</b>	<b>110</b>	<b>126</b>	<b>117</b>	<b>-7.1%</b>	<b>-1.7%</b>
<b>Psychology</b>							
Behavioral Sci (GR)	68	74	72	55	48	-12.7%	-29.4%
Edu Psych (GR)	9	19	19	25	10	-60.0%	11.1%
Marri & Fam Therapy (GR)	32	17	23	29	31	6.9%	-3.1%
Psych Rehab (UG)	42	44	48	44	41	-6.8%	-2.4%
Psychology (UG)	689	734	765	811	796	-1.8%	15.5%
School Psychology (GR)	32	32	32	26	35	34.6%	9.4%
<b>Psychology Total:</b>	<b>872</b>	<b>920</b>	<b>959</b>	<b>990</b>	<b>961</b>	<b>-2.9%</b>	<b>10.2%</b>
<b>Social Work</b>							
Social Work (UG)	177	149	156	167	173	3.6%	-2.3%
Social Work (GR)	110	103	96	94	88	-6.4%	-20.0%
<b>Social Work Total:</b>	<b>287</b>	<b>252</b>	<b>252</b>	<b>261</b>	<b>261</b>	<b>0.0%</b>	<b>-9.1%</b>
<b>Sociology/Anthro.</b>							
Sociology (UG)	182	211	205	188	197	4.8%	8.2%
<b>Sociology/Anthro. Total:</b>	<b>182</b>	<b>211</b>	<b>205</b>	<b>188</b>	<b>197</b>	<b>4.8%</b>	<b>8.2%</b>
<i>HSS UG Total:</i>	<i>2,188</i>	<i>2,280</i>	<i>2,283</i>	<i>2,367</i>	<i>2,424</i>	<i>2.4%</i>	<i>10.8%</i>
<i>HSS GR Total:</i>	<i>251</i>	<i>249</i>	<i>256</i>	<i>248</i>	<i>250</i>	<i>0.8%</i>	<i>-0.4%</i>
<b>HSS Total:</b>	<b>2,439</b>	<b>2,529</b>	<b>2,539</b>	<b>2,615</b>	<b>2,674</b>	<b>2.3%</b>	<b>9.6%</b>

## Enrollment by Department and Program College of Natural, Applied, and Health Sciences

	FALL 2002	FALL 2003	FALL 2004	FALL 2005	FALL 2006	1-YEAR CHANGE	5-YEAR CHANGE
<b>ENROLLMENT</b>							
<b>Biological Sciences</b>							
Biology (UG)	402	388	385	396	419	5.8%	4.2%
Medical Tech. (UG)	52	52	54	58	59	1.7%	13.5%
<b>Biological Sciences Total:</b>	<b>454</b>	<b>440</b>	<b>439</b>	<b>454</b>	<b>478</b>	<b>5.3%</b>	<b>5.3%</b>
<b>Chemistry/Physics</b>							
Chemistry (UG)	61	75	86	98	91	-7.1%	49.2%
<b>Chemistry/Physics Total:</b>	<b>61</b>	<b>75</b>	<b>86</b>	<b>98</b>	<b>91</b>	<b>-7.1%</b>	<b>49.2%</b>
<b>Geology/Meteorology</b>							
Earth Science (UG)	64	88	77	85	76	-10.6%	18.8%
<b>Geology/Meteorology Total:</b>	<b>64</b>	<b>88</b>	<b>77</b>	<b>85</b>	<b>76</b>	<b>-10.6%</b>	<b>18.8%</b>
<b>Health Info Mgmt</b>							
HIM (UG)	52	51	61	79	58	-26.6%	11.5%
<b>Health Info Mgmt Total:</b>	<b>52</b>	<b>51</b>	<b>61</b>	<b>79</b>	<b>58</b>	<b>-26.6%</b>	<b>11.5%</b>
<b>Math/Computer Sci</b>							
Comp/Stat/Math. (GR)	8	9	14	12	6	-50.0%	-25.0%
Computer Science (UG)	552	402	256	192	147	-23.4%	-73.4%
Math. Edu. (GR)	13	15	14	18	13	-27.8%	0.0%
Math. Science (UG)	140	183	200	205	201	-2.0%	43.6%
<b>Math/Computer Sci Total:</b>	<b>713</b>	<b>609</b>	<b>484</b>	<b>427</b>	<b>367</b>	<b>-14.1%</b>	<b>-48.5%</b>
<b>Nursing</b>							
M.S.N./M.P.A. in Nursing (GR)	12	18	19	18	18	0.0%	50.0%
Nursing (UG)	216	174	156	158	253	60.1%	17.1%
Nursing (GR)	57	55	63	66	67	1.5%	17.5%
<b>Nursing Total:</b>	<b>285</b>	<b>247</b>	<b>238</b>	<b>242</b>	<b>338</b>	<b>39.7%</b>	<b>18.6%</b>
<b>Occupational Therapy</b>							
Occupational Therapy (UG)	101	48	22	8	0	Discontinued Program	
Occupational Therapy (GR)	16	28	34	46	61	32.6%	281.3%
<b>Occupational Therapy Total:</b>	<b>117</b>	<b>76</b>	<b>56</b>	<b>54</b>	<b>61</b>	<b>13.0%</b>	<b>-47.9%</b>
<b>Technology</b>							
Comp.Integrated Design & Mfg. Tech. (UG)	0	0	7	14	17	21.4%	
Electronics Tech. (UG)	107	80	49	34	23	-32.4%	-78.5%
Tech.Edu. (UG)	6	2	2	2	3	50.0%	-50.0%
Telecomm.Info.Tech. (UG)	14	27	40	43	28	-34.9%	100.0%
<b>Technology Total:</b>	<b>127</b>	<b>109</b>	<b>98</b>	<b>93</b>	<b>71</b>	<b>-23.7%</b>	<b>-44.1%</b>
<b>NAHS UG Total:</b>	<b>1,767</b>	<b>1,570</b>	<b>1,395</b>	<b>1,372</b>	<b>1,375</b>	<b>0.2%</b>	<b>-22.2%</b>
<b>NAHS GR Total:</b>	<b>106</b>	<b>125</b>	<b>144</b>	<b>160</b>	<b>165</b>	<b>3.1%</b>	<b>55.7%</b>
<b>NAHS Total:</b>	<b>1,873</b>	<b>1,695</b>	<b>1,539</b>	<b>1,532</b>	<b>1,540</b>	<b>0.5%</b>	<b>-17.8%</b>

## Enrollment by Department and Program School of Visual and Performing Arts

	FALL 2002	FALL 2003	FALL 2004	FALL 2005	FALL 2006	1-YEAR CHANGE	5-YEAR CHANGE
<b>ENROLLMENT</b>							
<b>Design</b>							
Graphic Comm (UG)	101	89	79	68	68	0.0%	-32.7%
Graphic Comm (GR)	17	24	22	22	31	40.9%	82.4%
Industrial Design (UG)	11	19	34	34	29	-14.7%	163.6%
Interior Design (UG)	136	164	173	157	141	-10.2%	3.7%
Visual Comm (UG)	140	176	157	166	169	1.8%	20.7%
<b>Design Total:</b>	<b>405</b>	<b>472</b>	<b>465</b>	<b>447</b>	<b>438</b>	<b>-2.0%</b>	<b>8.1%</b>
<b>Fine Arts</b>							
Art History (UG)	17	18	22	20	18	-10.0%	5.9%
Fine Arts (UG)	99	108	122	130	135	3.8%	36.4%
Fine Arts Edu (GR)	38	46	50	59	52	-11.9%	36.8%
Studio Art (UG)	37	29	32	41	36	-12.2%	-2.7%
<b>Fine Arts Total:</b>	<b>191</b>	<b>201</b>	<b>226</b>	<b>250</b>	<b>241</b>	<b>-3.6%</b>	<b>26.2%</b>
<b>Media &amp; Film</b>							
Communication - Broadcast (UG)	58	86	135	134	91	-32.1%	56.9%
Media (UG)	0	0	0	0	35		
<b>Media &amp; Film Total:</b>	<b>58</b>	<b>86</b>	<b>135</b>	<b>134</b>	<b>126</b>	<b>-6.0%</b>	<b>117.2%</b>
<b>Music</b>							
Music (UG)	25	19	28	25	25	0.0%	0.0%
Music Edu. (UG)	35	39	49	46	36	-21.7%	2.9%
<b>Music Total:</b>	<b>60</b>	<b>58</b>	<b>77</b>	<b>71</b>	<b>61</b>	<b>-14.1%</b>	<b>1.7%</b>
<b>Theatre</b>							
Speech & Theatre (UG)	5	7	8	6	11	83.3%	120.0%
Theatre (UG)	39	38	39	44	50	13.6%	28.2%
<b>Theatre Total:</b>	<b>44</b>	<b>45</b>	<b>47</b>	<b>50</b>	<b>61</b>	<b>22.0%</b>	<b>38.6%</b>
<b>VPA Other</b>							
Liberal Studies (GR)	20	28	30	24	30	25.0%	50.0%
<b>VPA Other Total:</b>	<b>20</b>	<b>28</b>	<b>30</b>	<b>24</b>	<b>30</b>	<b>25.0%</b>	<b>50.0%</b>
<i>VPA UG Total:</i>	<i>703</i>	<i>792</i>	<i>878</i>	<i>871</i>	<i>844</i>	<i>-3.1%</i>	<i>20.1%</i>
<i>VPA GR Total:</i>	<i>75</i>	<i>98</i>	<i>102</i>	<i>105</i>	<i>113</i>	<i>7.6%</i>	<i>50.7%</i>
<b>VPA Total:</b>	<b>778</b>	<b>890</b>	<b>980</b>	<b>976</b>	<b>957</b>	<b>-1.9%</b>	<b>23.0%</b>

## Second Majors by Program

	FALL 2002	FALL 2003	FALL 2004	FALL 2005	FALL 2006	1-YEAR CHANGE	5-YEAR CHANGE
<b>ENROLLMENT</b>							
Psychology	103	139	191	167	183	9.6%	77.7%
English	132	126	137	152	140	-7.9%	6.1%
History	64	64	70	73	73	0.0%	14.1%
Sociology	51	49	45	34	43	26.5%	-15.7%
Spanish	45	44	68	53	41	-22.6%	-8.9%
Earth Science	46	44	35	34	40	17.6%	-13.0%
Mathematical Science	32	28	19	21	29	38.1%	-9.4%
Liberal Studies in Math	0	0	7	10	15	50.0%	
Fine Arts	7	11	12	16	13	-18.8%	85.7%
Communication	18	20	21	13	11	-15.4%	-38.9%
Economics	14	11	15	9	10	11.1%	-28.6%
Political Science	4	6	7	10	9	-10.0%	125.0%
Liberal Studies in Technology	0	0	5	5	6	20.0%	
Liberal Studies in Earth Science	0	0	2	2	6	200.0%	
Biology	10	15	13	8	5		
Liberal Studies in Biology	0	0	2	3	5		
Management Science	4	3	7	5	3		
Finance	6	4	2	5	3		
Criminal Justice	1	2	2	2	3		
Marketing	0	1	1	1	3		
Theatre	6	5	4	6	2		
Computer Science	3	3	4	3	2		
Art History	6	6	1	3	2		
Philosophy and Religion	1	2	1	4	1		
Chemistry	3	1	1	2	1		
Fine Arts Education	0	0	0	0	1		
Physical Education	0	1	0	0	1		
Media	0	0	0	0	1		
Interior Design	0	0	0	0	1		
Music	0	2	2	2	0		
Communication - Broadcast	6	7	5	2	0		
Public Administration	2	2	3	2	0		
Industrial Design	0	0	1	1	0		
Occupational Therapy	0	0	1	0	0		
Psych Rehab	0	1	0	0	0		
Accounting	2	2	2	0	0		
Electronics Technology	0	0	1	0	0		
Elementary Education	1	0	0	0	0		
Recreation Administration	2	0	1	0	0		
<b>Second Majors Total</b>	<b>569</b>	<b>599</b>	<b>688</b>	<b>648</b>	<b>653</b>		





# Kean University

## *Degrees Conferred*

Page 18	At-a-Glance
Page 20	Degrees Conferred by Department and Program College of Business and Public Administration
Page 21	Degrees Conferred by Department and Program College of Education
Page 22	Degrees Conferred by Department and Program College of Humanities and Social Sciences
Page 23	Degrees Conferred by Department and Program College of Natural, Applied, and Health Sciences
Page 24	Degrees Conferred by Department and Program School of Visual and Performing Arts
Page 25	Degrees Conferred by Department and Program Nathan Weiss Graduate College

## Degrees Conferred, Fiscal Year 2005 - 2006

	TOTAL		BACHELOR'S		MASTER'S	
	No.	%	No.	%	No.	%
<b>DEGREE LEVEL</b>						
Bachelor's	1,860	73.2%	1,860	100.0%		
Master's	680	26.8%			680	100.0%
<b>GENDER</b>						
Male	751	29.6%	607	32.6%	144	21.2%
Female	1,789	70.4%	1,253	67.4%	536	78.8%
<b>RACE / ETHNICITY</b>						
Black	543	21.4%	391	21.0%	152	22.4%
Hispanic	418	16.5%	356	19.1%	62	9.1%
Asian	192	7.6%	148	8.0%	44	6.5%
White	1,306	51.4%	910	48.9%	396	58.2%
Unknown	81	3.2%	55	3.0%	26	3.8%
<b>COLLEGE</b>						
BPA	678	26.7%	569	30.6%	109	16.0%
EDU	714	28.1%	365	19.6%	349	51.3%
HSS	640	25.2%	525	28.2%	115	16.9%
NAHS	284	11.2%	235	12.6%	49	7.2%
NWGC	29	1.1%	0	0.0%	29	4.3%
VPA	195	7.7%	166	8.9%	29	4.3%

\* Fiscal Year 2005 - 2006 includes degrees conferred between July 1, 2005, and June 30, 2006.

\*\* Degrees conferred by academic year is available at <http://ir.kean.edu>.

### Top 10 Bachelor's Degrees Conferred

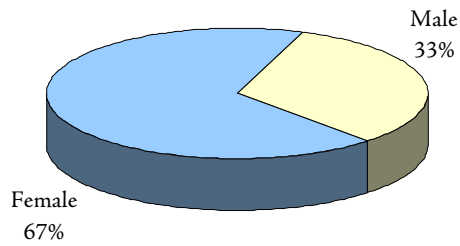
Management Science	210
Psychology	178
Accounting	114
Elementary Education	109
Early Childhood Edu.	99
Communication	82
Criminal Justice	81
Biology	67
Finance	64
English	63

### Top 10 Master's Degrees Conferred

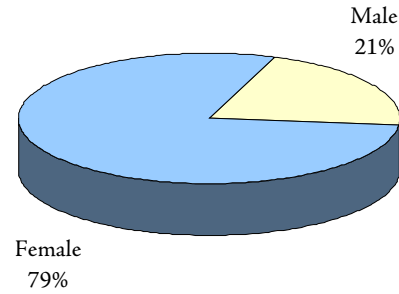
Educational Administration	85
Instruction & Curriculum	73
Public Administration	59
Social Work	54
Special Education	50
Accounting	50
Counselor Education	44
Speech Language Pathology	30
Early Childhood Edu.	27
Nursing	26

Additional information is available online at <http://ir.kean.edu>.

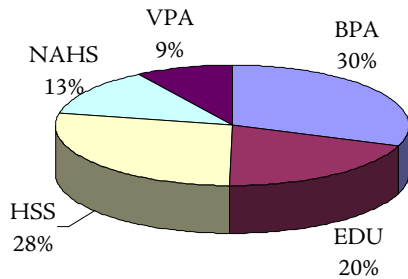
**BACHELOR'S DEGREES  
BY GENDER**



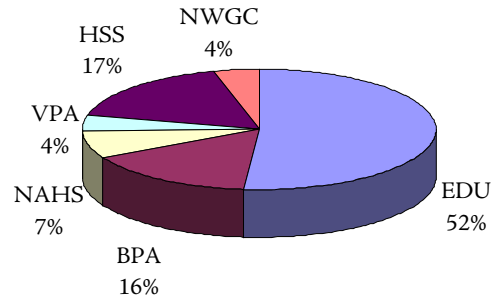
**MASTER'S DEGREES  
BY GENDER**



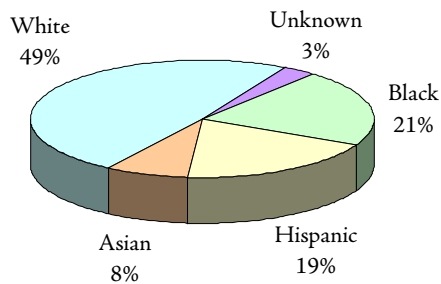
**BACHELOR'S DEGREES  
BY COLLEGE**



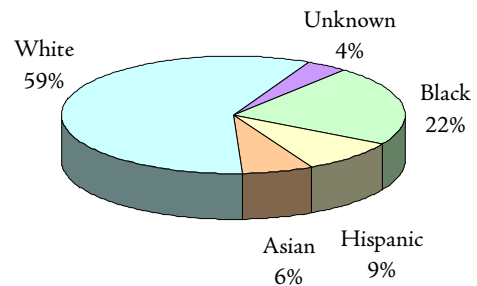
**MASTER'S DEGREES  
BY COLLEGE**



**BACHELOR'S DEGREES  
BY ETHNICITY**



**MASTER'S DEGREES  
BY ETHNICITY**



## Degrees Conferred by Department and Program College of Business and Public Administration

	FISCAL Yr 2001-02	FISCAL Yr 2002-03	FISCAL Yr 2003-04	FISCAL Yr 2004-05	FISCAL Yr 2005-06	1-YEAR CHANGE	5-YEAR CHANGE
<b>DEGREES CONFERRED</b>							
<b>Accounting</b>							
Accounting (UG)	91	109	99	111	114	2.7%	25.3%
Accounting (GR)	6	23	29	37	50	35.1%	733.3%
<b>Accounting Total:</b>	<b>97</b>	<b>132</b>	<b>128</b>	<b>148</b>	<b>164</b>	<b>10.8%</b>	<b>69.1%</b>
<b>Criminal Justice</b>							
Criminal Justice (UG)	69	69	76	70	81	15.7%	17.4%
<b>Criminal Justice Total:</b>	<b>69</b>	<b>69</b>	<b>76</b>	<b>70</b>	<b>81</b>	<b>15.7%</b>	<b>17.4%</b>
<b>Economics/Finance</b>							
Economics (UG)	10	14	14	18	16	-11.1%	60.0%
Finance (UG)	34	58	61	61	64	4.9%	88.2%
<b>Economics/Finance Total:</b>	<b>44</b>	<b>72</b>	<b>75</b>	<b>79</b>	<b>80</b>	<b>1.3%</b>	<b>81.8%</b>
<b>Management</b>							
Management Sci. (UG)	181	203	213	188	210	11.7%	16.0%
<b>Management Total:</b>	<b>181</b>	<b>203</b>	<b>213</b>	<b>188</b>	<b>210</b>	<b>11.7%</b>	<b>16.0%</b>
<b>Marketing</b>							
Marketing (UG)	64	63	68	78	56	-28.2%	-12.5%
<b>Marketing Total:</b>	<b>64</b>	<b>63</b>	<b>68</b>	<b>78</b>	<b>56</b>	<b>-28.2%</b>	<b>-12.5%</b>
<b>Public Adm</b>							
Public Admin. (UG)	34	16	21	26	28	7.7%	-17.6%
Public Admin. (GR)	34	60	66	51	59	15.7%	73.5%
<b>Public Adm Total:</b>	<b>68</b>	<b>76</b>	<b>87</b>	<b>77</b>	<b>87</b>	<b>13.0%</b>	<b>27.9%</b>
<i>BPA UG Total:</i>	<i>483</i>	<i>532</i>	<i>552</i>	<i>552</i>	<i>569</i>	<i>3.1%</i>	<i>17.8%</i>
<i>BPA GR Total:</i>	<i>40</i>	<i>83</i>	<i>95</i>	<i>88</i>	<i>109</i>	<i>23.9%</i>	<i>172.5%</i>
<b>BPA Total:</b>	<b>523</b>	<b>615</b>	<b>647</b>	<b>640</b>	<b>678</b>	<b>5.9%</b>	<b>29.6%</b>

## Degrees Conferred by Department and Program College of Education

Degrees Conferred

	FISCAL YR 2001-02	FISCAL YR 2002-03	FISCAL YR 2003-04	FISCAL YR 2004-05	FISCAL YR 2005-06	1-YEAR CHANGE	5-YEAR CHANGE
<b>DEGREES CONFERRED</b>							
<b>Comm Disorder/Deaf</b>							
Speech Lang. Pathology (GR)	20	42	33	50	30	-40.0%	50.0%
Speech, Lang Hear. Sci. (UG)	24	28	26	36	26	-27.8%	8.3%
<b>Comm Disorder/Deaf Total:</b>	<b>44</b>	<b>70</b>	<b>59</b>	<b>86</b>	<b>56</b>	<b>-34.9%</b>	<b>27.3%</b>
<b>Comm Sci/Edu Svcs</b>							
Edu/Media/Spec. (GR)	7	6	15	7	13	85.7%	85.7%
Reading Spec. (GR)	14	28	13	9	21	133.3%	50.0%
<b>Comm Sci/Edu Svcs Total:</b>	<b>21</b>	<b>34</b>	<b>28</b>	<b>16</b>	<b>34</b>	<b>112.5%</b>	<b>61.9%</b>
<b>Counselor Edu</b>							
Counselor Edu (GR)	25	31	31	32	44	37.5%	76.0%
<b>Counselor Edu Total:</b>	<b>25</b>	<b>31</b>	<b>31</b>	<b>32</b>	<b>44</b>	<b>37.5%</b>	<b>76.0%</b>
<b>Early Childhd/Family</b>							
Early Childhood Edu. (UG)	56	89	102	109	99	-9.2%	76.8%
Early Childhood Edu. (GR)	16	14	13	33	27	-18.2%	68.8%
<b>Early Childhd/Family Total:</b>	<b>72</b>	<b>103</b>	<b>115</b>	<b>142</b>	<b>126</b>	<b>-11.3%</b>	<b>75.0%</b>
<b>Edu Leadership</b>							
Edu Admin. (GR)	77	107	97	92	85	-7.6%	10.4%
<b>Edu Leadership Total:</b>	<b>77</b>	<b>107</b>	<b>97</b>	<b>92</b>	<b>85</b>	<b>-7.6%</b>	<b>10.4%</b>
<b>Elem Mid Sec Edu</b>							
Elementary Edu (UG)	103	74	92	123	109	-11.4%	5.8%
Instruction & Curriculum (GR)	73	68	63	73	73	0.0%	0.0%
<b>Elem Mid Sec Edu Total:</b>	<b>176</b>	<b>142</b>	<b>155</b>	<b>196</b>	<b>182</b>	<b>-7.1%</b>	<b>3.4%</b>
<b>Phys Ed/Rec/Health</b>							
Exercise Science (GR)	0	0	1	5	6	20.0%	
Physical Edu (UG)	47	41	51	54	60	11.1%	27.7%
Recreation Admin. (UG)	27	19	21	24	14	-41.7%	-48.1%
<b>Phys Ed/Rec/Health Total:</b>	<b>74</b>	<b>60</b>	<b>73</b>	<b>83</b>	<b>80</b>	<b>-3.6%</b>	<b>8.1%</b>
<b>Spec Edu/Indv Serv</b>							
Educator of Indivs with Disabilities (UG)	87	89	60	61	57	-6.6%	-34.5%
Special Edu (GR)	35	39	38	41	50	22.0%	42.9%
<b>Spec Edu/Indv Serv Total:</b>	<b>122</b>	<b>128</b>	<b>98</b>	<b>102</b>	<b>107</b>	<b>4.9%</b>	<b>-12.3%</b>
<b>EDU UG Total:</b>	<b>344</b>	<b>340</b>	<b>352</b>	<b>407</b>	<b>365</b>	<b>-10.3%</b>	<b>6.1%</b>
<b>EDU GR Total:</b>	<b>267</b>	<b>335</b>	<b>304</b>	<b>342</b>	<b>349</b>	<b>2.0%</b>	<b>30.7%</b>
<b>EDU Total:</b>	<b>611</b>	<b>675</b>	<b>656</b>	<b>749</b>	<b>714</b>	<b>-4.7%</b>	<b>16.9%</b>

## Degrees Conferred by Department and Program College of Humanities and Social Sciences

	FISCAL Yr 2001-02	FISCAL Yr 2002-03	FISCAL Yr 2003-04	FISCAL Yr 2004-05	FISCAL Yr 2005-06	1-YEAR CHANGE	5-YEAR CHANGE
<b>DEGREES CONFERRED</b>							
<b>Communication</b>							
Communication (UG)	57	68	52	84	82	-2.4%	43.9%
Communication Studies (GR)	0	0	0	6	1	-83.3%	
<b>Communication Total:</b>	<b>57</b>	<b>68</b>	<b>52</b>	<b>90</b>	<b>83</b>	<b>-7.8%</b>	<b>45.6%</b>
<b>English</b>							
English (UG)	43	53	57	45	63	40.0%	46.5%
<b>English Total:</b>	<b>43</b>	<b>53</b>	<b>57</b>	<b>45</b>	<b>63</b>	<b>40.0%</b>	<b>46.5%</b>
<b>Foreign Languages</b>							
Spanish (UG)	25	34	42	39	50	28.2%	100.0%
<b>Foreign Languages Total:</b>	<b>25</b>	<b>34</b>	<b>42</b>	<b>39</b>	<b>50</b>	<b>28.2%</b>	<b>100.0%</b>
<b>History</b>							
History (UG)	35	58	47	56	57	1.8%	62.9%
<b>History Total:</b>	<b>35</b>	<b>58</b>	<b>47</b>	<b>56</b>	<b>57</b>	<b>1.8%</b>	<b>62.9%</b>
<b>Philosophy/Religion</b>							
Philosophy and Religion (UG)	1	2	2	4	2	-50.0%	100.0%
<b>Philosophy/Religion Total:</b>	<b>1</b>	<b>2</b>	<b>2</b>	<b>4</b>	<b>2</b>	<b>-50.0%</b>	<b>100.0%</b>
<b>Political Science</b>							
Political Science (UG)	42	29	33	18	34	88.9%	-19.0%
Political Science (GR)	0	0	0	1	3	200.0%	
<b>Political Science Total:</b>	<b>42</b>	<b>29</b>	<b>33</b>	<b>19</b>	<b>37</b>	<b>94.7%</b>	<b>-11.9%</b>
<b>Psychology</b>							
Behavioral Sci (GR)	32	29	23	41	24	-41.5%	-25.0%
Edu Psych (GR)	9	7	12	8	22	175.0%	144.4%
Marri & Fam Therapy (GR)	2	5	3	0	4		100.0%
Psych Rehab (UG)	5	20	8	7	11	57.1%	120.0%
Psychology (UG)	130	140	132	150	178	18.7%	36.9%
School Psychology (GR)	10	6	8	2	7	250.0%	-30.0%
<b>Psychology Total:</b>	<b>188</b>	<b>207</b>	<b>186</b>	<b>208</b>	<b>246</b>	<b>18.3%</b>	<b>30.9%</b>
<b>Social Work</b>							
Social Work (UG)	36	49	36	44	30	-31.8%	-16.7%
Social Work (GR)	26	37	60	53	54	1.9%	107.7%
<b>Social Work Total:</b>	<b>62</b>	<b>86</b>	<b>96</b>	<b>97</b>	<b>84</b>	<b>-13.4%</b>	<b>35.5%</b>
<b>Sociology/Anthro.</b>							
Sociology (UG)	40	40	31	45	56	24.4%	40.0%
<b>Sociology/Anthro. Total:</b>	<b>40</b>	<b>40</b>	<b>31</b>	<b>45</b>	<b>56</b>	<b>24.4%</b>	<b>40.0%</b>
<b>HSS UG Total:</b>	<b>414</b>	<b>493</b>	<b>440</b>	<b>492</b>	<b>563</b>	<b>14.4%</b>	<b>36.0%</b>
<b>HSS GR Total:</b>	<b>79</b>	<b>84</b>	<b>106</b>	<b>111</b>	<b>115</b>	<b>3.6%</b>	<b>45.6%</b>
<b>HSS Total:</b>	<b>493</b>	<b>577</b>	<b>546</b>	<b>603</b>	<b>678</b>	<b>12.4%</b>	<b>37.5%</b>

## Degrees Conferred by Department and Program College of Natural, Applied, and Health Sciences

Degrees Conferred

	FISCAL Yr 2001-02	FISCAL Yr 2002-03	FISCAL Yr 2003-04	FISCAL Yr 2004-05	FISCAL Yr 2005-06	1-YEAR CHANGE	5-YEAR CHANGE
<b>DEGREES CONFERRED</b>							
<b>Biological Sciences</b>							
Biology (UG)	70	65	52	44	67	52.3%	-4.3%
Medical Tech. (UG)	2	5	6	5	3	-40.0%	50.0%
<b>Biological Sciences Total:</b>	<b>72</b>	<b>70</b>	<b>58</b>	<b>49</b>	<b>70</b>	<b>42.9%</b>	<b>-2.8%</b>
<b>Chemistry/Physics</b>							
Chemistry (UG)	12	7	7	9	14	55.6%	16.7%
<b>Chemistry/Physics Total:</b>	<b>12</b>	<b>7</b>	<b>7</b>	<b>9</b>	<b>14</b>	<b>55.6%</b>	<b>16.7%</b>
<b>Geology/Meteorology</b>							
Earth Science (UG)	8	7	11	7	10	42.9%	25.0%
<b>Geology/Meteorology Total:</b>	<b>8</b>	<b>7</b>	<b>11</b>	<b>7</b>	<b>10</b>	<b>42.9%</b>	<b>25.0%</b>
<b>Health Info Mgmt</b>							
HIM (UG)	14	7	9	6	17	183.3%	21.4%
<b>Health Info Mgmt Total:</b>	<b>14</b>	<b>7</b>	<b>9</b>	<b>6</b>	<b>17</b>	<b>183.3%</b>	<b>21.4%</b>
<b>Math/Computer Sci</b>							
Comp/Stat/Math. (GR)	2	2	3	3	2	-33.3%	0.0%
Computer Science (UG)	85	84	71	56	41	-26.8%	-51.8%
Math. Edu. (GR)	1	2	4	2	6	200.0%	500.0%
Math. Science (UG)	16	12	26	34	29	-14.7%	81.3%
<b>Math/Computer Sci Total:</b>	<b>104</b>	<b>100</b>	<b>104</b>	<b>95</b>	<b>78</b>	<b>-17.9%</b>	<b>-25.0%</b>
<b>Nursing</b>							
M.S.N./M.P.A. in Nursing (GR)	0	4	4	4	5	25.0%	
Nursing (UG)	52	46	54	56	35	-37.5%	-32.7%
Nursing (GR)	15	10	24	20	26	30.0%	73.3%
<b>Nursing Total:</b>	<b>67</b>	<b>60</b>	<b>82</b>	<b>80</b>	<b>66</b>	<b>-17.5%</b>	<b>-1.5%</b>
<b>Occupational Therapy</b>							
Occupational Therapy (UG)	26	27	17	14	6	Discontinued Program	
Occupational Therapy (GR)	14	0	1	10	10	0.0%	-28.6%
<b>Occupational Therapy Total:</b>	<b>40</b>	<b>27</b>	<b>18</b>	<b>24</b>	<b>16</b>	<b>-33.3%</b>	<b>-60.0%</b>
<b>Technology</b>							
Comp.Integrated Design & Mfg. Tech. (UG)	0	0	0	0	4		
Electronics Tech. (UG)	17	18	15	9	3	-66.7%	-82.4%
Tech.Edu. (UG)	5	4	1	0	0		
Telecomm.Info.Tech. (UG)	0	1	0	3	6	100.0%	
<b>Technology Total:</b>	<b>22</b>	<b>23</b>	<b>16</b>	<b>12</b>	<b>13</b>	<b>8.3%</b>	<b>-40.9%</b>
<b>NAHS UG Total:</b>	<b>307</b>	<b>283</b>	<b>269</b>	<b>243</b>	<b>235</b>	<b>-3.3%</b>	<b>-23.5%</b>
<b>NAHS GR Total:</b>	<b>32</b>	<b>18</b>	<b>36</b>	<b>39</b>	<b>49</b>	<b>25.6%</b>	<b>53.1%</b>
<b>NAHS Total:</b>	<b>339</b>	<b>301</b>	<b>305</b>	<b>282</b>	<b>284</b>	<b>0.7%</b>	<b>-16.2%</b>

## Degrees Conferred by Department and Program

### School of Visual and Performing Arts

	FISCAL YR 2001-02	FISCAL YR 2002-03	FISCAL YR 2003-04	FISCAL YR 2004-05	FISCAL YR 2005-06	1-YEAR CHANGE	5-YEAR CHANGE
<b>DEGREES CONFERRED</b>							
<b>Design</b>							
Graphic Comm (UG)	10	13	14	12	15	25.0%	50.0%
Graphic Comm (GR)	0	4	5	16	6	-62.5%	
Industrial Design (UG)	0	0	0	5	5	0.0%	
Interior Design (UG)	11	10	15	30	33	10.0%	200.0%
Visual Comm (UG)	20	16	21	32	26	-18.8%	30.0%
<b>Design Total:</b>	<b>41</b>	<b>43</b>	<b>55</b>	<b>95</b>	<b>85</b>	<b>-10.5%</b>	<b>107.3%</b>
<b>Fine Arts</b>							
Art History (UG)	1	3	2	4	7	75.0%	600.0%
Fine Arts (UG)	17	18	8	11	20	81.8%	17.6%
Fine Arts Edu (GR)	10	15	10	13	15	15.4%	50.0%
Studio Art (UG)	4	4	8	3	5	66.7%	25.0%
<b>Fine Arts Total:</b>	<b>32</b>	<b>40</b>	<b>28</b>	<b>31</b>	<b>47</b>	<b>51.6%</b>	<b>46.9%</b>
<b>Media &amp; Film</b>							
Media (UG)	0	0	0	0	1		
<b>Media &amp; Film Total:</b>	<b>0</b>	<b>0</b>	<b>0</b>	<b>0</b>	<b>1</b>		
<b>Music</b>							
Music (UG)	5	3	0	2	6	200.0%	20.0%
Music Edu. (UG)	7	2	3	6	0	-100.0%	-100.0%
<b>Music Total:</b>	<b>12</b>	<b>5</b>	<b>3</b>	<b>8</b>	<b>6</b>	<b>-25.0%</b>	<b>-50.0%</b>
<b>Theatre</b>							
Speech & Theatre (UG)	0	0	0	1	0	-100.0%	
Theatre (UG)	2	4	4	2	10	400.0%	400.0%
<b>Theatre Total:</b>	<b>2</b>	<b>4</b>	<b>4</b>	<b>3</b>	<b>10</b>	<b>233.3%</b>	<b>400.0%</b>
<b>VPA Other</b>							
Liberal Studies (GR)	6	3	4	8	8	0.0%	33.3%
<b>VPA Other Total:</b>	<b>6</b>	<b>3</b>	<b>4</b>	<b>8</b>	<b>8</b>	<b>0.0%</b>	<b>33.3%</b>
<i>VPA UG Total:</i>	<i>77</i>	<i>73</i>	<i>75</i>	<i>108</i>	<i>128</i>	<i>18.5%</i>	<i>66.2%</i>
<i>VPA GR Total:</i>	<i>16</i>	<i>22</i>	<i>19</i>	<i>37</i>	<i>29</i>	<i>-21.6%</i>	<i>81.3%</i>
<b>VPA Total:</b>	<b>93</b>	<b>95</b>	<b>94</b>	<b>145</b>	<b>157</b>	<b>8.3%</b>	<b>68.8%</b>

## Degrees Conferred by Department and Program Nathan Weiss Graduate College

Degrees Conferred

	FISCAL YR 2001-02	FISCAL YR 2002-03	FISCAL YR 2003-04	FISCAL YR 2004-05	FISCAL YR 2005-06	1-YEAR CHANGE	5-YEAR CHANGE
<b>DEGREES CONFERRED</b>							
<b>Grad Mgmt Studies</b>							
MIS (GR)	37	44	30	17	21	23.5%	-43.2%
<b>Grad Mgmt Studies Total:</b>	<b>37</b>	<b>44</b>	<b>30</b>	<b>17</b>	<b>21</b>	<b>23.5%</b>	<b>-43.2%</b>
<b>Sci &amp; Tech Edu</b>							
Biotechnology (GR)	4	6	4	3	8	166.7%	100.0%
<b>Sci &amp; Tech Edu Total:</b>	<b>4</b>	<b>6</b>	<b>4</b>	<b>3</b>	<b>8</b>	<b>166.7%</b>	<b>100.0%</b>
<i>NWGC GR Total:</i>	<i>41</i>	<i>50</i>	<i>34</i>	<i>20</i>	<i>29</i>	<i>45.0%</i>	<i>-29.3%</i>
<b>NWGC Total:</b>	<b>41</b>	<b>50</b>	<b>34</b>	<b>20</b>	<b>29</b>	<b>45.0%</b>	<b>-29.3%</b>





# Kean University

## *Employees*

Page 28

At-a-Glance

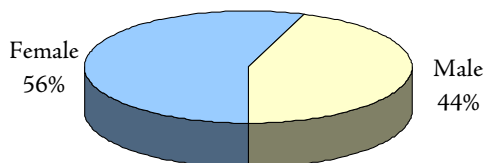
## Fall 2006 Employee Demographics

	TOTAL		FACULTY		STAFF	
	TOTAL	%	#	%	#	%
TOTAL FULL-TIME	1,155	100.0%	370	100.0%	785	100.0%
GENDER						
Male	513	44.4%	199	53.8%	314	40.0%
Female	642	55.6%	171	46.2%	471	60.0%
RACE / ETHNICITY						
Black	244	21.1%	41	11.1%	203	25.9%
Hispanic	213	18.4%	31	8.4%	182	23.2%
Asian	65	5.6%	28	7.6%	37	4.7%
White	625	54.1%	268	72.4%	357	45.5%
Unknown	6	0.5%	2	0.5%	4	0.5%
EMPLOYEE GROUP						
Faculty	370	32.0%	370	100.0%		
Administrative & Managerial	157	13.6%			157	20.0%
Professional	204	17.7%			204	26.0%
Clerk & Secretarial	158	13.7%			158	20.1%
Technical & Paraprofessional	66	5.7%			66	8.4%
Service Maintenance	156	13.5%			156	19.9%
Skilled Crafts	44	3.8%			44	5.6%
AGE						
< 30	92	8.0%	2	0.5%	90	11.5%
30 - 39	192	16.6%	39	10.5%	153	19.5%
40 - 49	265	22.9%	65	17.6%	200	25.5%
50 - 59	349	30.2%	118	31.9%	231	29.4%
60 - 69	210	18.2%	121	32.7%	89	11.3%
70 +	47	4.1%	25	6.8%	22	2.8%
PART TIME EMPLOYEES	47	N/A	14	N/A	33	N/A
ADJUNCT FACULTY	841	N/A	841	N/A		

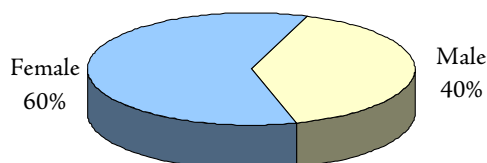
\* Numbers represent full-time faculty and staff only, unless otherwise noted.

Additional information is available online at <http://ir.kean.edu>.

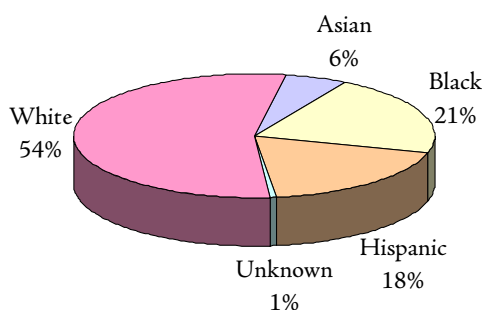
**FULL-TIME EMPLOYEES  
BY GENDER**



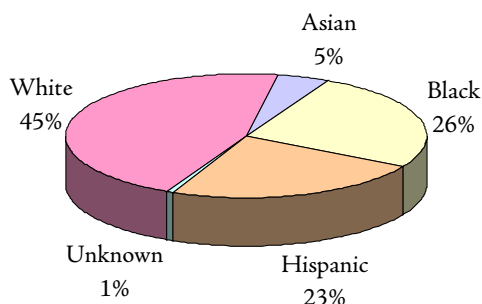
**FULL-TIME STAFF  
BY GENDER**



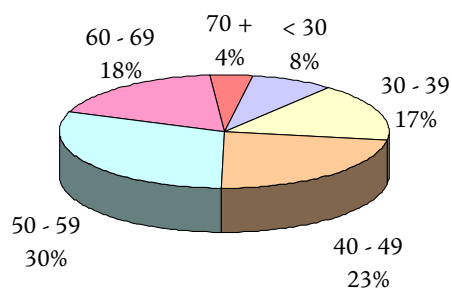
**FULL-TIME EMPLOYEES  
BY RACE / ETHNICITY**



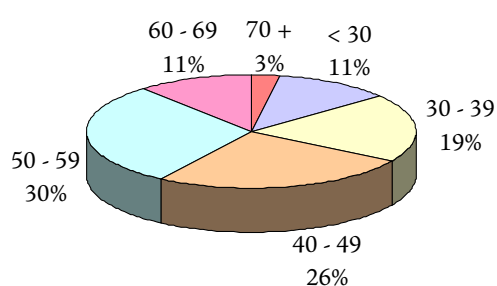
**FULL-TIME STAFF  
BY RACE / ETHNICITY**



**FULL-TIME EMPLOYEES  
BY AGE GROUP**



**FULL-TIME STAFF  
BY AGE GROUP**



The charts for full-time faculty are located in the “Faculty” section.





# Kean University

## *Faculty*

Page 32	At-a-Glance
Page 34	Faculty Trends
Page 36	Full-Time Faculty by Department College of Business and Public Administration College of Education
Page 37	Full-Time Faculty by Department College of Humanities and Social Sciences
Page 38	Full-Time Faculty by Department College of Natural, Applied, and Health Sciences School of Visual and Performing Arts Nathan Weiss Graduate College
Page 39	Distribution of Full-Time Faculty by Age

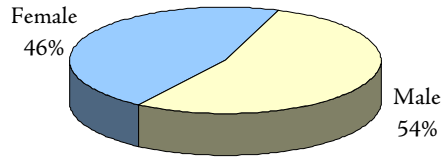
## Fall 2006 Faculty Demographics

	UNIVERSITY		COLLEGES					
	TOTAL	%	BPA	EDU	HSS	NAHS	NWGC	VPA
TOTAL FULL-TIME	370	100.0%	46	89	106	73	8	48
GENDER								
Male	199	53.8%	31	33	57	43	6	29
Female	171	46.2%	15	56	49	30	2	19
RACE / ETHNICITY								
Black	41	11.1%	6	10	14	5	2	4
Hispanic	31	8.4%	4	11	10	3	1	2
Asian	28	7.6%	5	2	7	12	0	2
White	268	72.4%	31	65	75	52	5	40
Unknown	2	0.5%	0	1	0	1	0	0
TENURE STATUS								
Tenured	268	72.4%	31	66	83	52	2	34
Tenure Track	97	26.2%	15	19	23	20	6	14
Not on Tenure Track	5	1.4%	0	4	0	1	0	0
RANK								
Professor	144	38.9%	18	29	48	30	1	18
Associate Professor	93	25.1%	16	25	22	14	1	15
Assistant Professor	129	34.9%	12	31	36	29	6	15
Instructor	4	1.1%	0	4	0	0	0	0
EDUCATION								
Highest Degree								
Doctorate	308	83.2%	39	79	101	59	8	22
Master's	62	16.8%	7	10	5	14	0	26
Bachelor's	0	0.0%	0	0	0	0	0	0
Unknown	0	0.0%	0	0	0	0	0	0
Terminal Degree in Field	330	89.2%	40	80	103	59	8	40
AGE								
Average Age	55	N/A	56	59	56	50	43	51
Faculty >= 60	146	39.5%	18	50	43	21	0	14
PART-TIME FACULTY	14	N/A	2	12	0	0	0	0
ADJUNCT FACULTY	841	N/A						

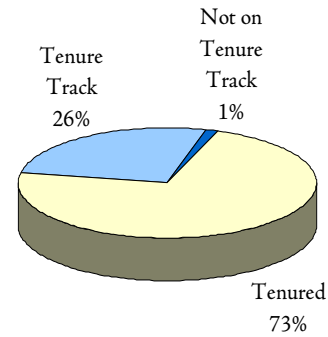
\* Numbers represent full-time faculty only, unless otherwise noted.

Additional information is available online at <http://ir.kean.edu>.

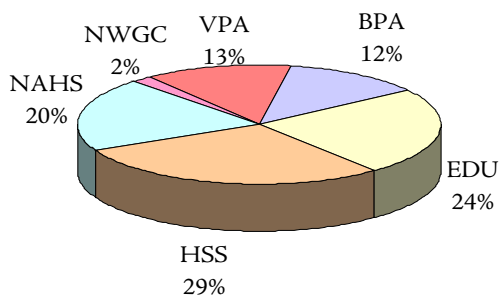
**FULL-TIME FACULTY  
BY GENDER**



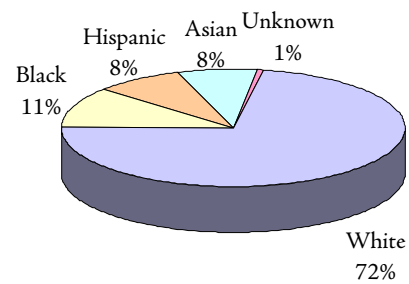
**FULL-TIME FACULTY  
BY TENURE STATUS**



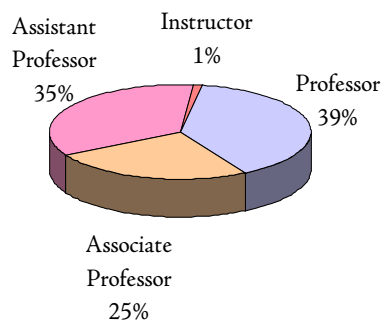
**FULL-TIME FACULTY  
BY COLLEGE**



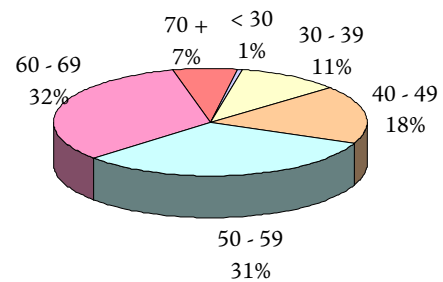
**FULL-TIME FACULTY  
BY RACE / ETHNICITY**



**FULL-TIME FACULTY  
BY RANK**



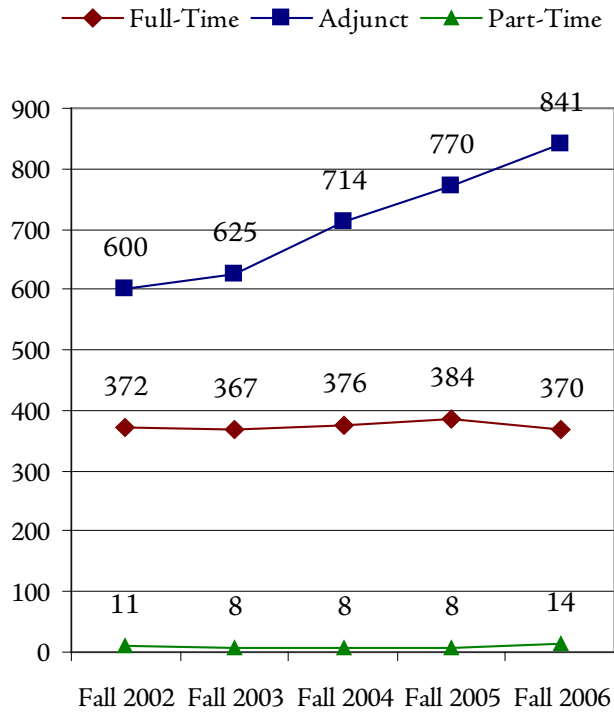
**FULL-TIME FACULTY  
BY AGE GROUP**



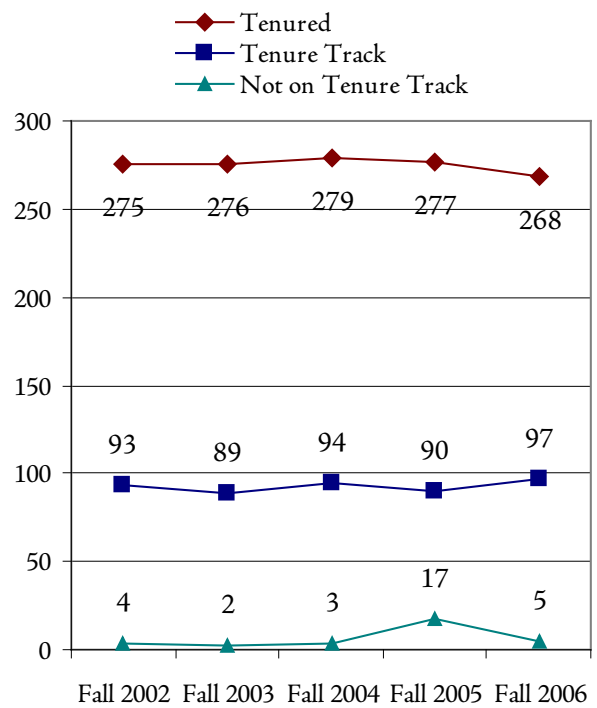
# Faculty Trends (Fall 2002 - Fall 2006)

	FALL 2002	FALL 2003	FALL 2004	FALL 2005	FALL 2006	1-YEAR CHANGE	5-YEAR CHANGE
TOTAL FULL=TIME	372	367	376	384	370	-3.6%	-0.5%
GENDER							
Male	200	198	205	208	199	-4.3%	-0.5%
Female	172	169	171	176	171	-2.8%	-0.6%
RACE / ETHNICITY							
Black	39	38	38	41	41	0.0%	5.1%
Hispanic	26	24	26	30	31	3.3%	19.2%
Asian	31	32	32	28	28	0.0%	-9.7%
White	276	273	277	282	268	-5.0%	-2.9%
Unknown	0	0	3	3	2	-33.3%	
TENURE STATUS							
Tenured	275	276	279	277	268	-3.2%	-2.5%
Tenure Track	93	89	94	90	97	7.8%	4.3%
Not on Tenure Track	4	2	3	17	5	-70.6%	25.0%
RANK							
Professor	149	150	148	147	144	-2.0%	-3.4%
Associate Professor	92	90	97	98	93	-5.1%	1.1%
Assistant Professor	129	127	131	136	129	-5.1%	0.0%
Instructor	2	0	0	3	4	33.3%	100.0%
EDUCATION							
Highest Degree							
Doctorate	297	303	314	312	308	-1.3%	3.7%
Master's	75	64	61	67	62	-7.5%	-17.3%
Bachelor's	0	0	1	2	0	-100.0%	
Unknown	0	0	0	3	0	-100.0%	
Terminal Degree in Field	320	323	340	333	330	-0.9%	3.1%
AGE							
Average Age	53.01	53.82	54.32	54.68	55.03	0.6%	3.8%
Faculty >= 60	109	118	129	139	146	5.0%	33.9%
PART-TIME FACULTY	11	8	8	8	14	75.0%	27.3%
ADJUNCT FACULTY	600	625	714	770	841	9.2%	40.2%
* Numbers represent full-time faculty only, unless otherwise noted.							
** 4-Year Change							

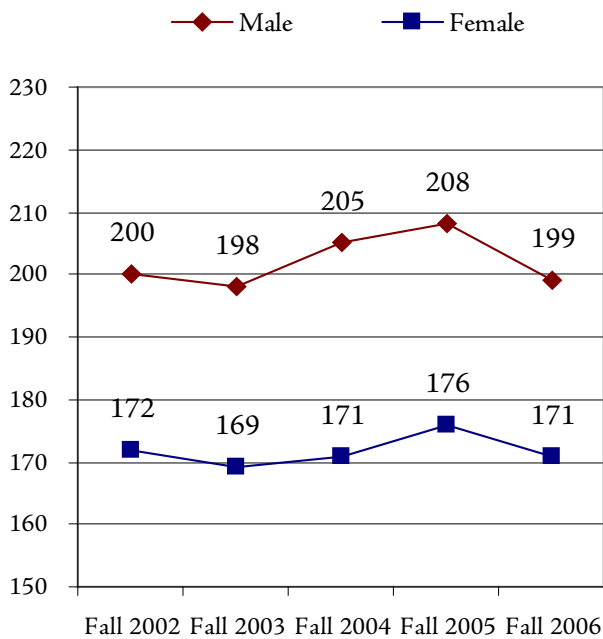
### FACULTY COUNT FALL 2002 - FALL 2006



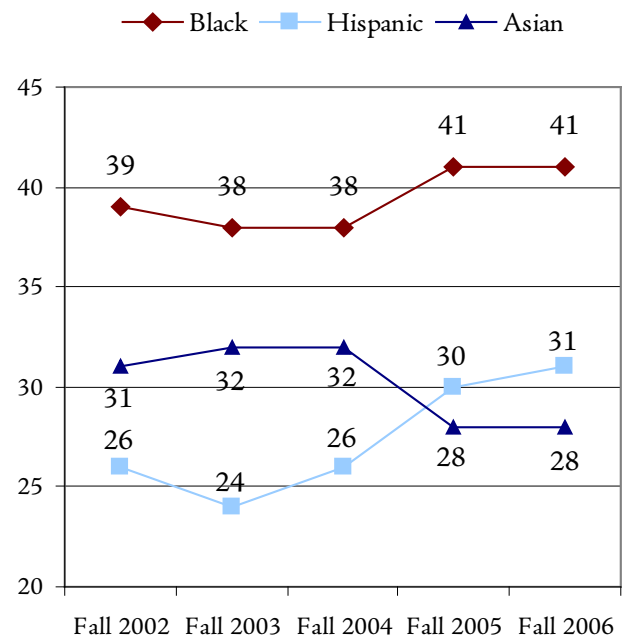
### TENURE STATUS FALL 2002 - FALL 2006



### GENDER FALL 2002 - FALL 2006



### MINORITY FACULTY COUNT FALL 2002 - FALL 2006



## Full-Time Faculty by Department College of Business and Public Administration

	FALL 2002	FALL 2003	FALL 2004	FALL 2005	FALL 2006	1-YEAR CHANGE	5-YEAR CHANGE
<b>NUMBER OF FACULTY</b>							
Accounting	7	7	9	9	9	0.0%	28.6%
Economics/Finance	10	11	10	10	10	0.0%	0.0%
Management	11	13	12	13	10	-23.1%	-9.1%
Marketing	5	4	5	6	5	-16.7%	0.0%
Public Adm	8	8	8	7	7	0.0%	-12.5%
Criminal Justice	4	3	4	5	5	0.0%	25.0%
BPA Faculty Total:	45	46	48	50	46	-8.0%	2.2%

## Full-Time Faculty by Department College of Education

	FALL 2002	FALL 2003	FALL 2004	FALL 2005	FALL 2006	1-YEAR CHANGE	5-YEAR CHANGE
<b>NUMBER OF FACULTY</b>							
Comm Disorder/Deaf	9	8	9	9	8	-11.1%	-11.1%
Comm Sci/Edu Svcs	11	11	11	11	10	-9.1%	-9.1%
Early Childhd/Family	11	11	8	10	11	10.0%	0.0%
Phys Ed/Rec/Health	17	17	17	18	17	-5.6%	0.0%
Edu Leadership	7	6	6	5	5	0.0%	-28.6%
Elem Mid Sec Edu	20	21	21	22	21	-4.5%	5.0%
Spec Edu/Indv Serv	11	11	11	10	9	-10.0%	-18.2%
Counselor Edu	5	5	5	5	5	0.0%	0.0%
EDU Other	0	0	0	2	3	50.0%	
EDU Faculty Total:	91	90	88	92	89	-3.3%	-2.2%

## Full-Time Faculty by Department College of Humanities and Social Sciences

	FALL 2002	FALL 2003	FALL 2004	FALL 2005	FALL 2006	1-YEAR CHANGE	5-YEAR CHANGE
<b>NUMBER OF FACULTY</b>							
<b>Communication</b>	11	11	7	7	7	0.0%	-36.4%
<b>English</b>	26	25	26	25	25	0.0%	-3.8%
<b>Foreign Languages</b>	7	7	7	7	7	0.0%	0.0%
<b>History</b>	10	9	12	12	11	-8.3%	10.0%
<b>Philosophy/Religion</b>	7	7	7	7	7	0.0%	0.0%
<b>Political Science</b>	8	8	7	7	7	0.0%	-12.5%
<b>Psychology</b>	20	20	21	21	19	-9.5%	-5.0%
<b>Social Work</b>	10	10	10	11	11	0.0%	10.0%
<b>Sociology/Anthro.</b>	12	12	12	12	12	0.0%	0.0%
<b>HSS Faculty Total:</b>	<b>111</b>	<b>109</b>	<b>109</b>	<b>109</b>	<b>106</b>	<b>-2.8%</b>	<b>-4.5%</b>

## Full-Time Faculty by Department College of Natural, Applied, and Health Sciences

	FALL 2002	FALL 2003	FALL 2004	FALL 2005	FALL 2006	1-YEAR CHANGE	5-YEAR CHANGE
<b>NUMBER OF FACULTY</b>							
<b>Biological Sciences</b>	15	15	14	15	13	-13.3%	-13.3%
<b>Chemistry/Physics</b>	12	13	12	11	12	9.1%	0.0%
<b>Geology/Meteorology</b>	9	8	9	9	10	11.1%	11.1%
<b>Health Info Mgmt</b>	3	3	2	2	2	0.0%	-33.3%
<b>Math/Computer Sci</b>	27	25	25	24	24	0.0%	-11.1%
<b>Nursing</b>	8	8	6	7	7	0.0%	-12.5%
<b>Occupational Therapy</b>	6	5	5	3	3	0.0%	-50.0%
<b>Technology</b>	5	6	7	5	2	-60.0%	-60.0%
<b>NAHS Faculty Total:</b>	<b>85</b>	<b>83</b>	<b>80</b>	<b>76</b>	<b>73</b>	<b>-3.9%</b>	<b>-14.1%</b>

### Full-Time Faculty by Department School of Visual and Performing Arts

	FALL 2002	FALL 2003	FALL 2004	FALL 2005	FALL 2006	1-YEAR CHANGE	5-YEAR CHANGE
NUMBER OF FACULTY							
Design	12	12	13	14	14	0.0%	16.7%
Fine Arts	15	14	17	17	16	-5.9%	6.7%
Music	8	8	8	8	7	-12.5%	-12.5%
Theatre	5	5	6	6	6	0.0%	20.0%
Media & Film	0	0	4	5	5	0.0%	
VPA Faculty Total:	40	39	48	50	48	-4.0%	20.0%

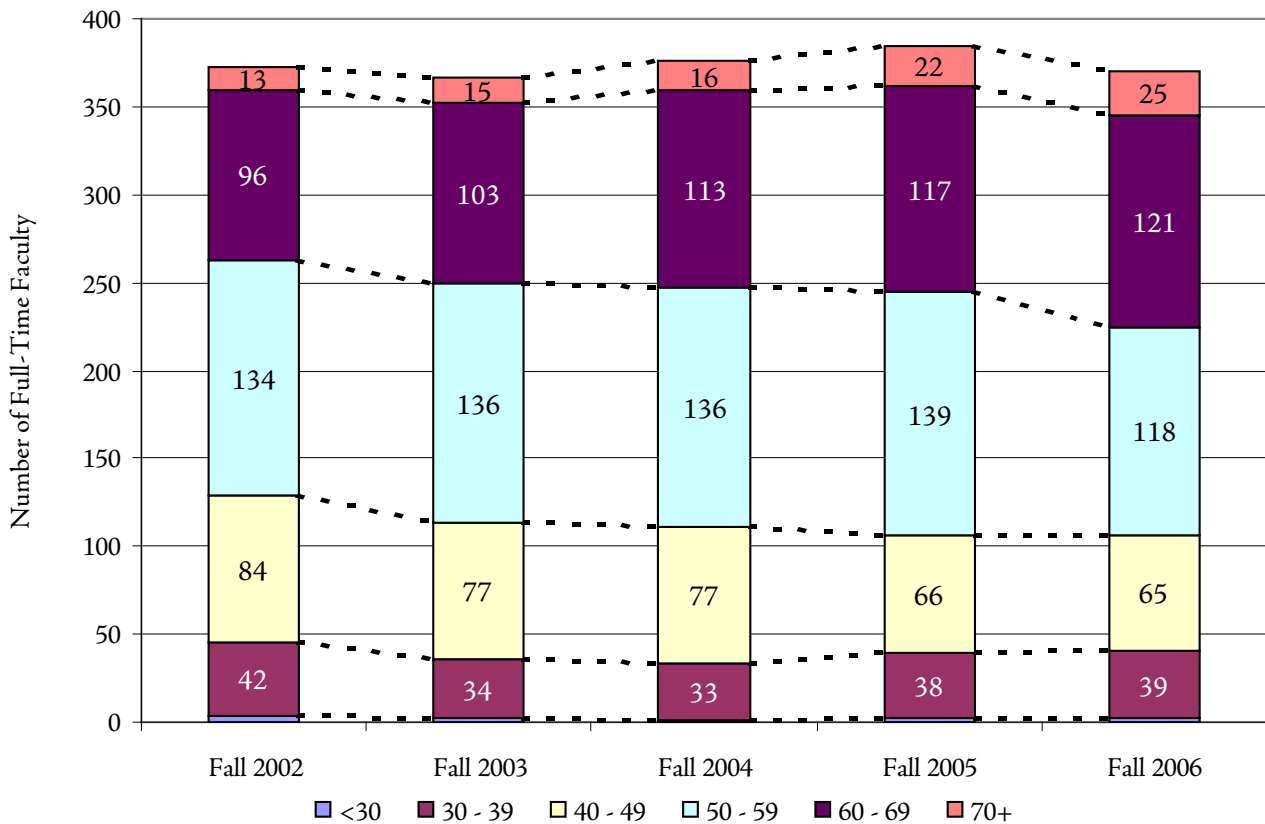
### Full-Time Faculty by Department Nathan Weiss Graduate College

	FALL 2002	FALL 2003	FALL 2004	FALL 2005	FALL 2006	1-YEAR CHANGE	5-YEAR CHANGE
NUMBER OF FACULTY							
Grad Mgmt Studies	0	0	0	2	3	50.0%	
Sci & Tech Edu	0	0	3	5	5	0.0%	
NWGC Faculty Total:	0	0	3	7	8	14.3%	

## Distribution of Full-Time Faculty by Age

	FALL 2002	FALL 2003	FALL 2004	FALL 2005	FALL 2006		5-YEAR CHANGE
					No.	%	
AGE							
< 30	3	2	1	2	2	0.5%	-33.3%
30 - 39	42	34	33	38	39	10.5%	-7.1%
40 - 49	84	77	77	66	65	17.6%	-22.6%
50 - 59	134	136	136	139	118	31.9%	-11.9%
60 - 69	96	103	113	117	121	32.7%	26.0%
70 +	13	15	16	22	25	6.8%	92.3%
TOTAL	372	367	376	384	370	100.0%	-0.5%
AVERAGE AGE	53.01	53.82	54.32	54.68	55.03		3.8%

## Distribution of Full-Time Faculty by Age Group Fall 2002 - Fall 2006





Office of Institutional Research  
Kean University  
1000 Morris Avenue  
Union, New Jersey 07083  
<http://ir.kean.edu>  
908.737.3470