



Kean University

*Student and
Faculty Profile*

Fall 2005

Office of Institutional Research

Quick Facts

Founded:	1855	President:	Dr. Dawood Farahi
Campus Size:	155.0 acres	Mailing Address:	1000 Morris Avenue Union, New Jersey 07083
Main Campus:	121.5 acres		
East Campus:	28.5 acres		
		Main Phone:	(908) 737-KEAN (908) 737-5326
Number of Colleges:	6		
Degree Programs Offered:		Admissions:	(908) 737-7100
Undergraduate Programs	49		
Graduate Programs	30	Public Info:	(908) 737-NEWS (908) 737-6397
Average Class Size:	19		
Student/Faculty Ratio:	15:1		
2004-2005 Tuition and Fees: (full-time, in-state, undergraduate)	\$7,506.00		
2004-2005 Tuition and Fees: (full-time, in-state, graduate)	\$10,384.80		

Contents

<i>Enrollment</i>	<i>Page 01</i>
<i>Degrees Conferred</i>	<i>Page 17</i>
<i>Employees</i>	<i>Page 27</i>
<i>Faculty</i>	<i>Page 31</i>



Kean University

Enrollment

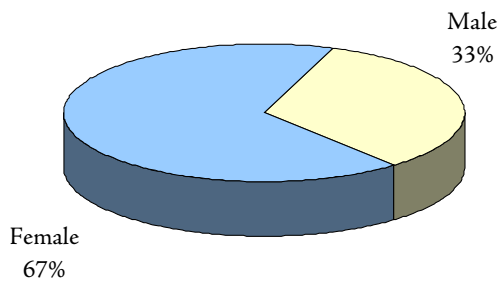
Page 02	At-a-Glance
Page 04	Enrollment Trends
Page 06	Enrollment by Geographic Origin
Page 08	Retention & Graduation Rates
Page 10	Enrollment by Department and Program College of Business and Public Administration
Page 11	Enrollment by Department and Program College of Education
Page 12	Enrollment by Department and Program College of Humanities and Social Sciences
Page 13	Enrollment by Department and Program College of Natural, Applied, and Health Sciences
Page 14	Enrollment by Department and Program School of Visual and Performing Arts
Page 15	Enrollment by Department and Program Nathan Weiss Graduate College

Fall 2005 Enrollment At-a-Glance

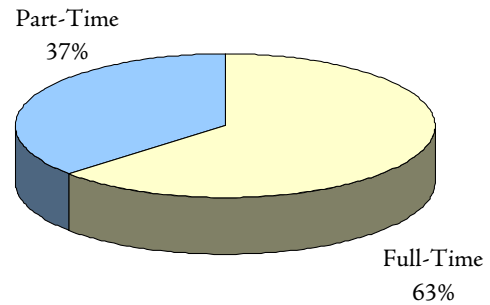
	UNIVERSITY		UNDERGRADUATE		GRADUATE	
	No.	%	No.	%	No.	%
ENROLLMENT						
Headcount	12,958	100%	10,035	100%	2,923	100%
F.T.E.	9,405.6		8,003.2		1,402.4	
GENDER						
Male	4,322	33.4%	3,662	36.5%	660	22.6%
Female	8,636	66.6%	6,373	63.5%	2,263	77.4%
RACE / ETHNICITY						
Black	2,701	20.8%	2,147	21.4%	554	19.0%
Hispanic	2,312	17.8%	1,996	19.9%	316	10.8%
Asian	831	6.4%	695	6.9%	136	4.7%
White	6,657	51.4%	4,864	48.5%	1,793	61.3%
Unknown	457	3.5%	333	3.3%	124	4.2%
ATTENDANCE STATUS						
Full-Time	8,204	63.3%	7,591	75.6%	613	21.0%
Part-Time	4,754	36.7%	2,444	24.4%	2,310	79.0%
ADMISSIONS STATUS						
Regular	6,583	50.8%	4,333	43.2%	2,250	77.0%
Special	514	4.0%	514	5.1%		
E.O.F.	873	6.7%	873	8.7%		
Transfer	3,966	30.6%	3,966	39.5%		
E.O.F. Transfer	223	1.7%	223	2.2%		
Other	799	6.2%	126	1.3%	673	23.0%
REGISTRATION STATUS						
First-Time	2,585	19.9%	1,486	14.8%	1,099	37.6%
Transfer	992	7.7%	992	9.9%		
Stop-out / Readmit	498	3.8%	498	5.0%		
Continuing	8,883	68.6%	7,059	70.3%	1,824	62.4%
AGE						
<25	7,208	55.6%	6,805	67.8%	403	13.8%
25 - 34	3,172	24.5%	1,895	18.9%	1,277	43.7%
35 - 44	1,446	11.2%	842	8.4%	604	20.7%
45 - 54	896	6.9%	403	4.0%	493	16.9%
55+	236	1.8%	90	0.9%	146	5.0%
Average Age	27.35		25.13		34.96	
MATRICULATION STATUS						
Degree Seeking	11,569	89.3%	9,612	95.8%	1,957	67.0%
Certificate / Non-Degree	644	5.0%	351	3.5%	293	10.0%
Non-matriculated	745	5.7%	72	0.7%	673	23.0%
STATE RESIDENCE						
New Jersey	12,469	96.2%	9,667	96.3%	2,802	95.9%
Out-of-State	201	1.6%	149	1.5%	52	1.8%
International	287	2.2%	218	2.2%	69	2.4%
Not Reported	1	0.0%	1	0.0%	0	0.0%

Additional information is available online at <http://ir.kean.edu>.

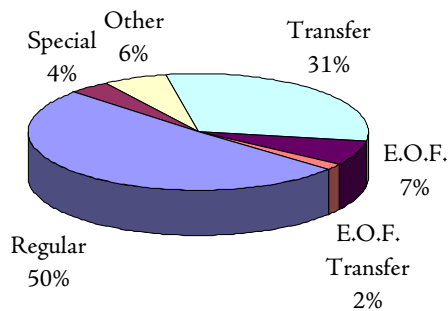
**DISTRIBUTION OF STUDENTS
BY GENDER**



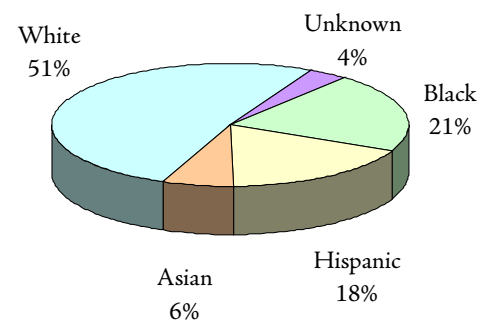
**DISTRIBUTION OF STUDENTS
BY ATTENDANCE STATUS**



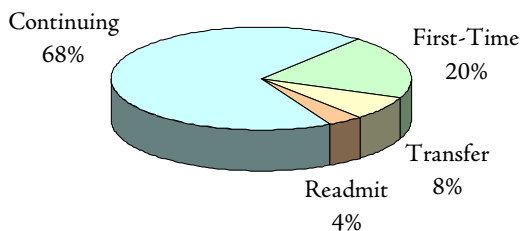
**DISTRIBUTION OF STUDENTS
BY ADMIT STATUS**



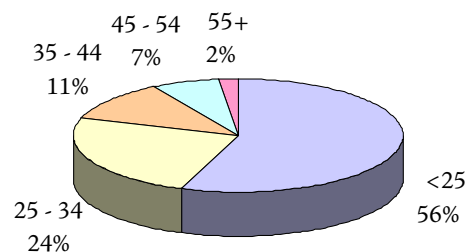
**DISTRIBUTION OF STUDENTS
BY ETHNICITY**



**DISTRIBUTION OF STUDENTS
BY REGISTRATION STATUS**



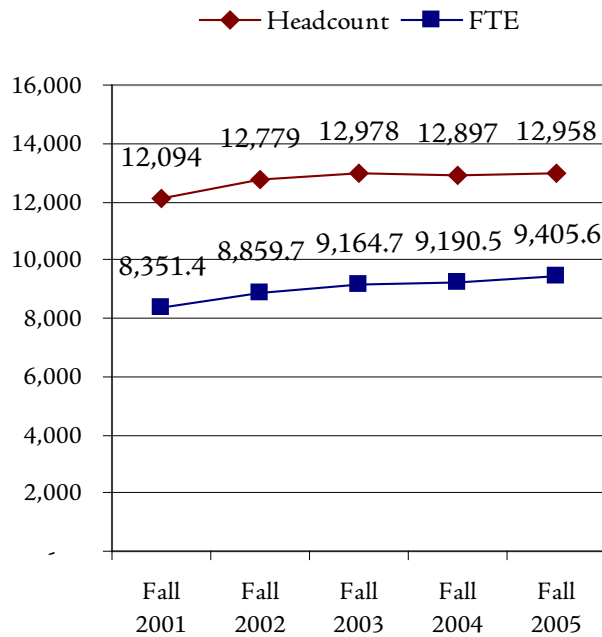
**DISTRIBUTION OF STUDENTS
BY AGE GROUP**



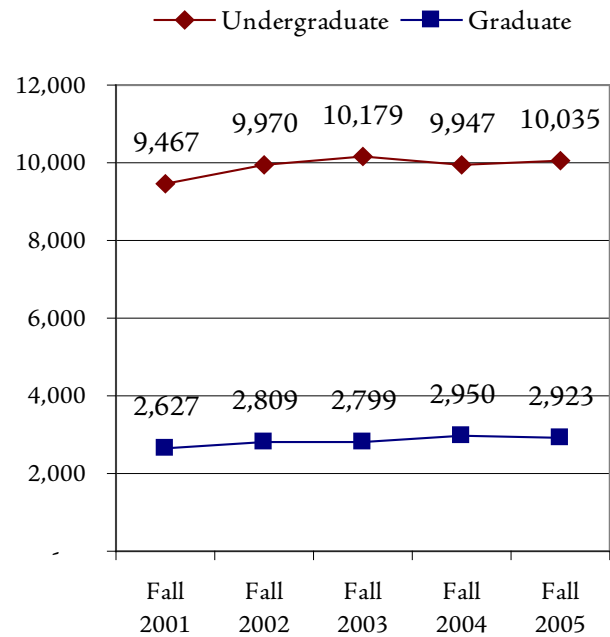
Enrollment Trends (Fall 2001 - Fall 2005)

	FALL 2001	FALL 2002	FALL 2003	FALL 2004	FALL 2005	1 YEAR CHANGE	5 YEAR CHANGE
ENROLLMENT							
Headcount	12,094	12,779	12,978	12,897	12,958	0.5%	7.1%
F.T.E.	8,351.4	8,859.7	9,164.7	9,190.5	9,405.6	2.3%	12.6%
Undergraduate	9,467	9,970	10,179	9,947	10,035	0.9%	6.0%
Graduate	2,627	2,809	2,799	2,950	2,923	-0.9%	11.3%
GENDER							
Male	3,906	4,192	4,268	4,179	4,322	3.4%	10.7%
Female	8,188	8,587	8,710	8,718	8,636	-0.9%	5.5%
RACE / ETHNICITY							
Black	2,355	2,589	2,617	2,640	2,701	2.3%	14.7%
Hispanic	2,040	2,271	2,403	2,268	2,312	1.9%	13.3%
Asian	789	827	812	830	831	0.1%	5.3%
White	6,281	6,579	6,699	6,756	6,657	-1.5%	6.0%
Unknown	629	513	447	403	457	13.4%	-27.3%
ATTENDANCE STATUS							
Full-Time	7,183	7,582	7,950	7,936	8,204	3.4%	14.2%
Part-Time	4,911	5,197	5,028	4,961	4,754	-4.2%	-3.2%
ADMISSIONS STATUS							
Regular	5,490	6,041	6,338	6,450	6,583	2.1%	19.9%
Special	546	576	552	526	514	-2.3%	-5.9%
E.O.F.	932	920	895	846	873	3.2%	-6.3%
Transfer	3,883	4,016	4,079	3,990	3,966	-0.6%	2.1%
E.O.F. Transfer	308	280	288	238	223	-6.3%	-27.6%
Other	935	946	826	847	799	-5.7%	-14.5%
REGISTRATION STATUS							
First-Time	2,094	2,536	2,515	2,441	2,585	5.9%	23.4%
Transfer	1,084	1,217	1,178	1,071	992	-7.4%	-8.5%
Stop-out / Readmit	514	507	612	545	498	-8.6%	-3.1%
Continuing	8,402	8,519	8,673	8,840	8,883	0.5%	5.7%
AGE							
<25	6,337	6,791	6,936	6,898	7,208	4.5%	13.7%
25 - 34	3,130	3,332	3,382	3,274	3,172	-3.1%	1.3%
35 - 44	1,487	1,491	1,502	1,540	1,446	-6.1%	-2.8%
45 - 54	968	962	947	949	896	-5.6%	-7.4%
55+	148	181	211	235	236	0.4%	59.5%
Not Reported	24	22	0	1	0		
Average Age	27.83	27.63	27.55	27.71	27.35	-1.3%	-1.7%
MATRICULATION STATUS							
Degree Seeking	10,714	11,299	11,483	11,331	11,569	2.1%	8.0%
Certificate / Non-Degree	611	621	758	725	644	-11.2%	5.4%
Non-matriculated	769	859	737	841	745	-11.4%	-3.1%
STATE RESIDENCE							
New Jersey	11,491	12,150	12,407	12,382	12,469	0.7%	8.5%
Out-of-State	180	209	197	194	201	3.6%	11.7%
International	414	420	374	321	287	-10.6%	-30.7%
Not Reported	9	-	-	-	1		

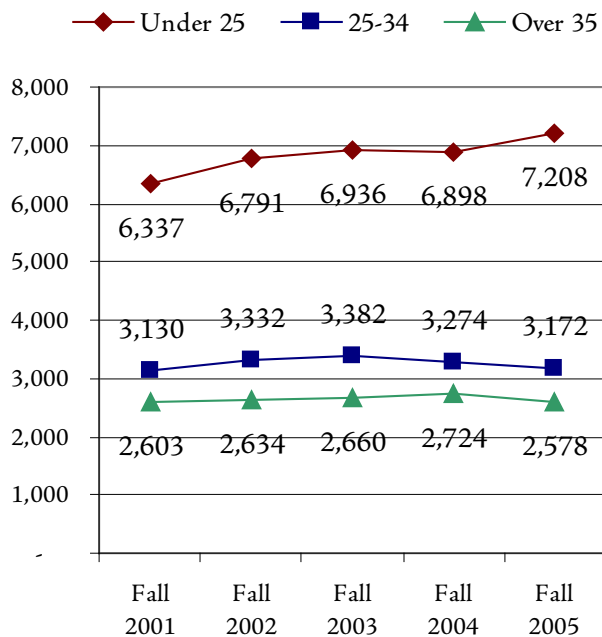
HEADCOUNT & FTE FALL 2001 - FALL 2005



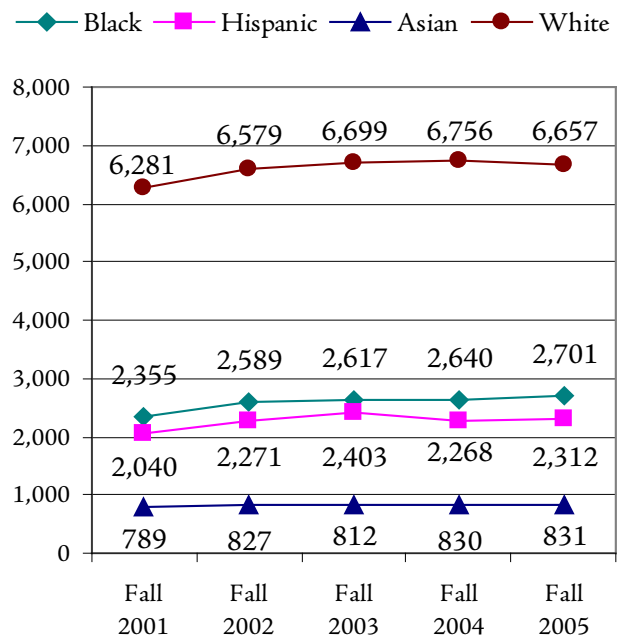
UNDERGRADUATE & GRADUATE FALL 2001 - FALL 2005



AGE GROUP FALL 2001 - FALL 2005



RACE / ETHNICITY FALL 2001 - FALL 2005



Enrollment by Geographic Origin

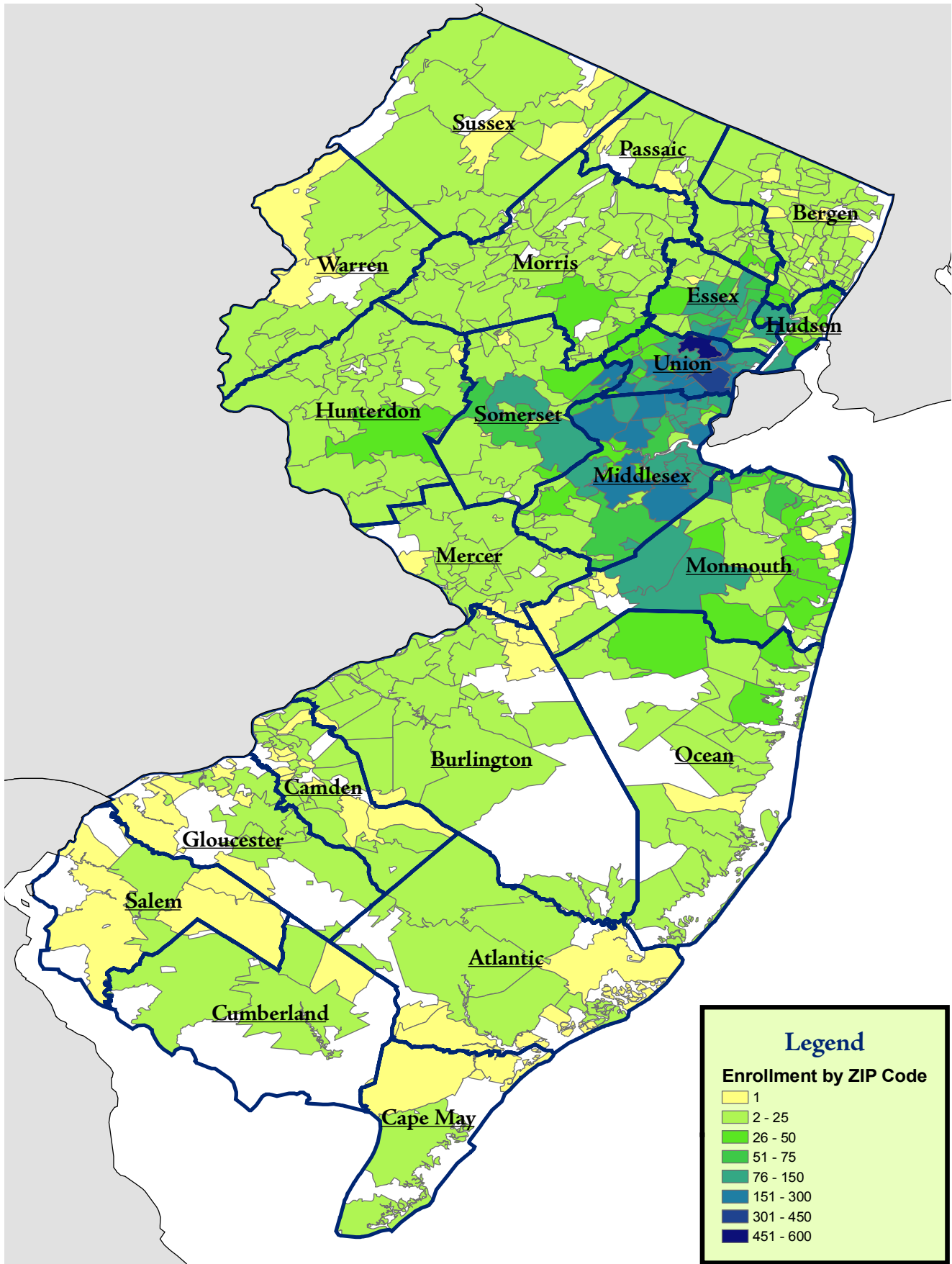
	FALL 2001	FALL 2002	FALL 2003	FALL 2004	FALL 2005		5-YEAR CHANGE
					No.	%	
NEW JERSEY RESIDENTS	11,491	12,149	12,407	12,382	12,469	96.2%	8.5%
Union	3,757	4,147	4,049	3,843	3,849	29.7%	2.4%
Middlesex	2,425	2,560	2,892	2,993	3,101	23.9%	27.9%
Essex	1,582	1,669	1,683	1,671	1,681	13.0%	6.3%
Monmouth	866	936	962	1,016	942	7.3%	8.8%
Hudson	574	554	553	486	480	3.7%	-16.4%
Bergen	389	390	400	408	439	3.4%	12.9%
Morris	328	394	383	408	427	3.3%	30.2%
Somerset	511	368	401	387	396	3.1%	-22.5%
Ocean	233	230	235	280	277	2.1%	18.9%
Passaic	298	295	266	269	246	1.9%	-17.4%
Burlington	90	98	101	101	115	0.9%	27.8%
Mercer	116	133	128	108	114	0.9%	-1.7%
Hunterdon	75	73	80	82	101	0.8%	34.7%
Sussex	61	63	56	72	65	0.5%	6.6%
Warren	45	65	58	65	60	0.5%	33.3%
Camden	49	66	53	63	58	0.4%	18.4%
Atlantic	32	51	46	46	53	0.4%	65.6%
Gloucester	16	17	17	19	23	0.2%	43.8%
Cape May	13	16	15	16	18	0.1%	38.5%
Cumberland	18	17	20	19	16	0.1%	-11.1%
Salem	8	7	9	8	8	0.1%	0.0%
County Unknown	5	0	0	22	0	0.0%	
NON-RESIDENTS	180	210	197	194	201	1.6%	11.7%
New York	140	152	143	138	140	1.1%	0.0%
Pennsylvania	21	27	27	26	24	0.2%	14.3%
Other	19	31	27	30	37	0.3%	94.7%
INTERNATIONAL	414	420	374	321	287	2.2%	-30.7%
NOT REPORTED	9	0	0	0	1	0.0%	
TOTAL ENROLLMENT	12,094	12,779	12,978	12,897	12,958	100%	7.1%

Top 10 Countries of Citizenship for International Students (in alphabetical order)

Bermuda	Nigeria
Columbia	Pakistan
Ghana	People's Republic of China
India	Poland
Kenya	Trinidad and Tobago

International students come from 68 different countries and areas.

Fall 2005 Enrollment by ZIP Code



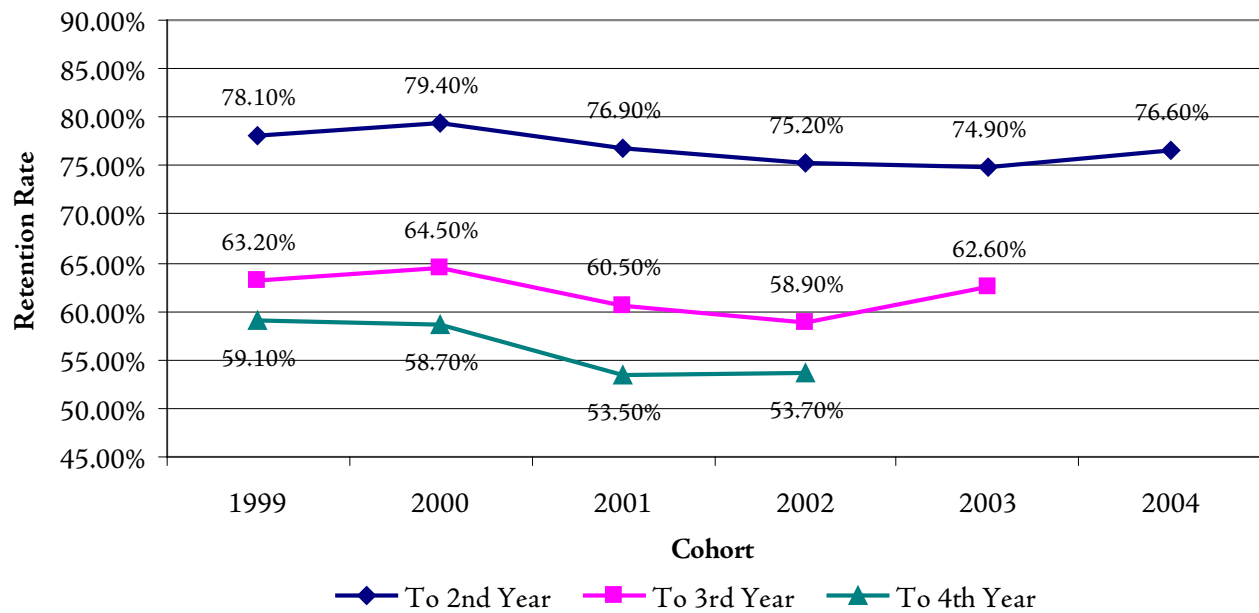
First-Time, Full-Time Freshmen Retention Rates

COHORT YEAR	HEAD COUNT	# CONTINUED			% CONTINUED		
		TO 2ND YEAR	TO 3RD YEAR	TO 4TH YEAR	TO 2ND YEAR	TO 3RD YEAR	TO 4TH YEAR
1995	1,249	998	770	661	79.9%	61.6%	52.9%
1996	984	782	634	570	79.5%	64.4%	57.9%
1997	872	689	571	526	79.0%	65.5%	60.3%
1998	1,034	817	682	618	79.0%	66.0%	59.8%
1999	999	780	631	590	78.1%	63.2%	59.1%
2000	1,161	922	749	681	79.4%	64.5%	58.7%
2001	1,132	871	685	606	76.9%	60.5%	53.5%
2002	1,317	991	776	707	75.2%	58.9%	53.7%
2003	1,311	982	821	-	74.9%	62.6%	-
2004	1,254	961	-	-	76.6%	-	-

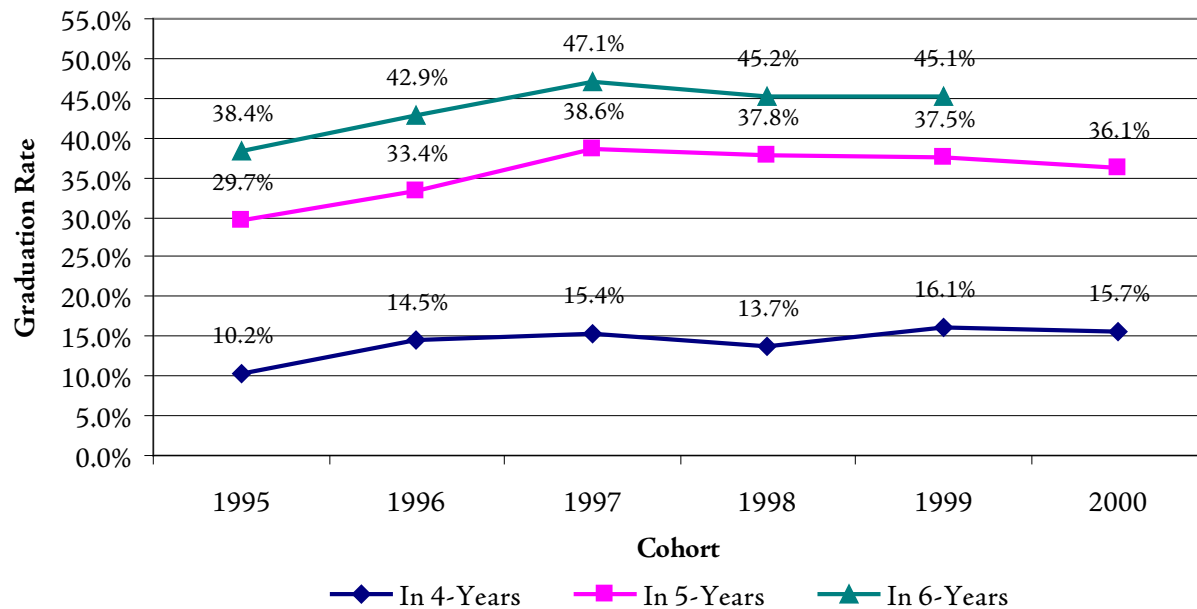
First-Time, Full-Time Freshmen Graduation Rates

COHORT YEAR	HEAD COUNT	# GRADUATED			% GRADUATED		
		IN 4 YEARS	IN 5 YEARS	IN 6 YEARS	IN 4 YEARS	IN 5 YEARS	IN 6 YEARS
1995	1,249	128	371	479	10.20%	29.70%	38.40%
1996	984	143	329	422	14.50%	33.40%	42.90%
1997	872	134	337	411	15.40%	38.60%	47.10%
1998	1,034	142	391	467	13.70%	37.80%	45.20%
1999	999	161	375	451	16.10%	37.50%	45.1%
2000	1,161	182	419	-	15.70%	36.1%	-

First-Time, Full-Time Freshmen Retention Rates 1999 - 2004 Cohorts



First-Time, Full-Time Freshmen Graduation Rates 1995 - 2000 Cohorts



Enrollment by Department and Program College of Business and Public Administration

	FALL 2001	FALL 2002	FALL 2003	FALL 2004	FALL 2005	1-YEAR CHANGE	5-YEAR CHANGE
ENROLLMENT							
Accounting							
Accounting (UG)	407	413	399	422	399	-5.5%	-2.0%
Accounting (GR)	45	66	75	83	91	9.6%	102.2%
Accounting Total:	452	479	474	505	490	-3.0%	8.4%
Criminal Justice							
Criminal Justice (UG)	366	431	448	481	513	6.7%	40.2%
Criminal Justice Total:	366	431	448	481	513	6.7%	40.2%
Economics/Finance							
Economics (UG)	129	140	152	149	178	19.5%	38.0%
Finance (UG)	170	206	198	186	166	-10.8%	-2.4%
Economics/Finance Total:	299	346	350	335	344	2.7%	15.1%
Management							
Management Sci. (UG)	738	781	790	745	733	-1.6%	-0.7%
Management Total:	738	781	790	745	733	-1.6%	-0.7%
Marketing							
Marketing (UG)	257	272	281	271	276	1.8%	7.4%
Marketing Total:	257	272	281	271	276	1.8%	7.4%
Public Adm							
Public Admin. (UG)	106	100	116	110	108	-1.8%	1.9%
Public Admin. (GR)	132	134	152	160	169	5.6%	28.0%
Public Adm Total:	238	234	268	270	277	2.6%	16.4%
<i>BPA UG Total:</i>	<i>2,173</i>	<i>2,343</i>	<i>2,384</i>	<i>2,364</i>	<i>2,373</i>	<i>0.4%</i>	<i>9.2%</i>
<i>BPA GR Total:</i>	<i>177</i>	<i>200</i>	<i>227</i>	<i>243</i>	<i>260</i>	<i>7.0%</i>	<i>46.9%</i>
BPA Total:	2,350	2,543	2,611	2,607	2,633	1.0%	12.0%

Enrollment by Department and Program College of Education

	FALL 2001	FALL 2002	FALL 2003	FALL 2004	FALL 2005	1-YEAR CHANGE	5-YEAR CHANGE
ENROLLMENT							
Comm Disorder/Deaf							
Speech, Lang Hear. Sci. (UG)	128	126	132	131	119	-9.2%	-7.0%
Speech Lang. Pathology (GR)	101	116	114	108	95	-12.0%	-5.9%
Comm Disorder/Deaf Total:	229	242	246	239	214	-10.5%	-6.6%
Comm Sci/Edu Svcs							
Edu/Media/Spec. (GR)	40	41	46	34	41	20.6%	2.5%
Reading Spec. (GR)	66	75	56	83	100	20.5%	51.5%
Comm Sci/Edu Svcs Total:	106	116	102	117	141	20.5%	33.0%
Counselor Edu							
Counselor Edu (GR)	189	198	199	206	230	11.7%	21.7%
Counselor Edu Total:	189	198	199	206	230	11.7%	21.7%
Early Childhood/Family							
Early Childhood Edu. (UG)	437	511	553	545	547	0.4%	25.2%
Early Childhood Edu. (GR)	68	134	165	146	126	-13.7%	85.3%
Early Childhood/Family Total:	505	645	718	691	673	-2.6%	33.3%
Edu Leadership							
Edu Admin. (GR)	299	275	254	283	253	-10.6%	-15.4%
Edu Leadership Total:	299	275	254	283	253	-10.6%	-15.4%
Elem Mid Sec Edu							
Elementary Edu (UG)	714	740	796	789	840	6.5%	17.6%
Instruction & Curriculum (GR)	225	196	219	230	233	1.3%	3.6%
Elem Mid Sec Edu Total:	939	936	1,015	1,019	1,073	5.3%	14.3%
Phys Ed/Rec/Health							
Physical Edu (UG)	330	358	350	385	425	10.4%	28.8%
Recreation Admin. (UG)	54	56	63	58	59	1.7%	9.3%
Exercise Science (GR)	2	15	14	14	20	42.9%	900.0%
Phys Ed/Rec/Health Total:	386	429	427	457	504	10.3%	30.6%
Spec Edu/Indv Serv							
Educator of Indivs with Disabilities (UG)	374	355	387	369	329	-10.8%	-12.0%
Special Edu (GR)	183	180	199	217	231	6.5%	26.2%
Spec Edu/Indv Serv Total:	557	535	586	586	560	-4.4%	0.5%
EDU UG Total:	2,037	2,146	2,281	2,277	2,319	1.8%	13.8%
EDU GR Total:	1,173	1,230	1,266	1,321	1,329	0.6%	13.3%
EDU Total:	3,210	3,376	3,547	3,598	3,648	1.4%	13.6%

Enrollment by Department and Program

College of Humanities and Social Sciences

	FALL 2001	FALL 2002	FALL 2003	FALL 2004	FALL 2005	1-YEAR CHANGE	5-YEAR CHANGE
ENROLLMENT							
Communication							
Communication (UG)	334	373	341	348	334	-4.0%	0.0%
Communication Studies (GR)			4	10	12	20.0%	
Communication Total:	334	373	345	358	346	-3.4%	3.6%
English							
English (UG)	235	237	252	248	281	13.3%	19.6%
Liberal Studies (GR)	30	20	28	30	24	-20.0%	-20.0%
English Total:	265	257	280	278	305	9.7%	15.1%
Foreign Languages							
Spanish (UG)	107	178	206	207	203	-1.9%	89.7%
Foreign Languages Total:	107	178	206	207	203	-1.9%	89.7%
History							
History (UG)	229	236	303	321	347	8.1%	51.5%
History Total:	229	236	303	321	347	8.1%	51.5%
Philosophy/Religion							
Philosophy and Religion (UG)	13	13	12	14	7	-50.0%	-46.2%
Philosophy/Religion Total:	13	13	12	14	7	-50.0%	-46.2%
Political Science							
Political Science (UG)	129	119	114	106	119	12.3%	-7.8%
Political Science (GR)				4	7	75.0%	
Political Science Total:	129	119	114	110	126	14.5%	-2.3%
Psychology							
Psychology (UG)	631	689	734	765	811	6.0%	28.5%
Psych Rehab (UG)	39	42	44	48	44	-8.3%	12.8%
Behavioral Sci (GR)	80	68	74	72	55	-23.6%	-31.3%
DPL.School Psychology (GR)	32	32	32	32	26	-18.8%	-18.8%
Edu Psych (GR)	8	9	19	19	25	31.6%	212.5%
DPL.Marri & Fam Therapy (GR)	26	32	17	23	29	26.1%	11.5%
Psychology Total:	816	872	920	959	990	3.2%	21.3%
Social Work							
Social Work (UG)	158	177	149	156	167	7.1%	5.7%
Social Work (GR)	98	110	103	96	94	-2.1%	-4.1%
Social Work Total:	256	287	252	252	261	3.6%	2.0%
Sociology/Anthro.							
Sociology (UG)	152	182	211	205	188	-8.3%	23.7%
Sociology/Anthro. Total:	152	182	211	205	188	-8.3%	23.7%
<i>HSS UG Total:</i>	<i>2,027</i>	<i>2,246</i>	<i>2,366</i>	<i>2,418</i>	<i>2,501</i>	<i>3.4%</i>	<i>23.4%</i>
<i>HSS GR Total:</i>	<i>274</i>	<i>271</i>	<i>277</i>	<i>286</i>	<i>272</i>	<i>-4.9%</i>	<i>-0.7%</i>
HSS Total:	2,301	2,517	2,643	2,704	2,773	2.6%	20.5%

Enrollment by Department and Program

College of Natural, Applied, and Health Sciences

	FALL 2001	FALL 2002	FALL 2003	FALL 2004	FALL 2005	1-YEAR CHANGE	5-YEAR CHANGE
ENROLLMENT							
Biological Sciences							
Biology (UG)	427	402	388	385	396	2.9%	-7.3%
Medical Tech. (UG)	52	52	52	54	58	7.4%	11.5%
Biological Sciences Total:	479	454	440	439	454	3.4%	-5.2%
Chemistry/Physics							
Chemistry (UG)	56	61	75	86	98	14.0%	75.0%
Chemistry/Physics Total:	56	61	75	86	98	14.0%	75.0%
Geology/Meteorology							
Earth Science (UG)	62	64	88	77	85	10.4%	37.1%
Geology/Meteorology Total:	62	64	88	77	85	10.4%	37.1%
Health Info Mgmt							
HIM (UG)	48	52	51	61	79	29.5%	64.6%
Health Info Mgmt Total:	48	52	51	61	79	29.5%	64.6%
Math/Computer Sci							
Computer Science (UG)	622	552	402	256	192	-25.0%	-69.1%
Math. Science (UG)	113	140	183	200	205	2.5%	81.4%
Math. Edu. (GR)	13	13	15	14	18	28.6%	38.5%
Comp/Stat/Math. (GR)	4	8	9	14	12	-14.3%	200.0%
Math/Computer Sci Total:	752	713	609	484	427	-11.8%	-43.2%
Nursing							
Nursing (UG)	217	216	174	156	158	1.3%	-27.2%
M.S.N./M.P.A. in Nursing (GR)	8	12	18	19	18	-5.3%	125.0%
Nursing (GR)	41	57	55	63	66	4.8%	61.0%
Nursing Total:	266	285	247	238	242	1.7%	-9.0%
Occupational Therapy							
Occupational Therapy (UG)	134	101	48	22	8	-63.6%	-94.0%
Occupational Therapy (GR)	9	16	28	34	46	35.3%	411.1%
Occupational Therapy Total:	143	117	76	56	54	-3.6%	-62.2%
Technology							
Telecomm.Info.Tech. (UG)	1	14	27	40	43	7.5%	4,200.0%
Tech.Edu. (UG)	11	6	2	2	2	0.0%	-81.8%
Electronics Tech. (UG)	134	107	80	49	34	-30.6%	-74.6%
Comp.Integrated Design & Mfg. Tech. (UG)				7	14	100.0%	
Technology Total:	146	127	109	98	93	-5.1%	-36.3%
NAHS UG Total:	1,877	1,767	1,570	1,395	1,372	-1.6%	-26.9%
NAHS GR Total:	75	106	125	144	160	11.1%	113.3%
NAHS Total:	1,952	1,873	1,695	1,539	1,532	-0.5%	-21.5%

Enrollment by Department and Program School of Visual and Performing Arts

	FALL 2001	FALL 2002	FALL 2003	FALL 2004	FALL 2005	1-YEAR CHANGE	5-YEAR CHANGE
ENROLLMENT							
Design							
Graphic Comm (UG)	72	101	89	79	68	-13.9%	-5.6%
Visual Comm (UG)	104	140	176	157	166	5.7%	59.6%
Industrial Design (UG)		11	19	34	34	0.0%	
Interior Design (UG)	106	136	164	173	157	-9.2%	48.1%
Graphic Comm (GR)	6	17	24	22	22	0.0%	266.7%
Design Total:	288	405	472	465	447	-3.9%	55.2%
Fine Arts							
Fine Arts (UG)	95	99	108	122	130	6.6%	36.8%
Studio Art (UG)	34	37	29	32	41	28.1%	20.6%
Art History (UG)	12	17	18	22	20	-9.1%	66.7%
Fine Arts Edu (GR)	39	38	46	50	59	18.0%	51.3%
Fine Arts Total:	180	191	201	226	250	10.6%	38.9%
Media & Film*							
Music							
Music Edu. (UG)	29	35	39	49	46	-6.1%	58.6%
Music (UG)	22	25	19	28	25	-10.7%	13.6%
Music Total:	51	60	58	77	71	-7.8%	39.2%
Theatre							
Speech & Theatre (UG)	3	5	7	8	6	-25.0%	100.0%
Theatre (UG)	38	39	38	39	44	12.8%	15.8%
Theatre Total:	41	44	45	47	50	6.4%	22.0%
<i>VPA UG Total:</i>	<i>515</i>	<i>645</i>	<i>706</i>	<i>743</i>	<i>737</i>	<i>-0.8%</i>	<i>43.1%</i>
<i>VPA GR Total:</i>	<i>45</i>	<i>55</i>	<i>70</i>	<i>72</i>	<i>81</i>	<i>12.5%</i>	<i>80.0%</i>
VPA Total:	560	700	776	815	818	0.4%	46.1%

* The Media & Film Department will begin enrolling its own students in spring 2006.

Enrollment by Department and Program Nathan Weiss Graduate College

	FALL 2001	FALL 2002	FALL 2003	FALL 2004	FALL 2005	1-YEAR CHANGE	5-YEAR CHANGE
ENROLLMENT							
Grad Mgmt Studies							
MBA.GLOBALMGT (GR)					20		
MIS (GR)	111	91	61	39	34	-12.8%	-69.4%
Grad Mgmt Studies Total:	111	91	61	39	54		
Sci & Tech Edu							
Science & Tech. (UG)					16		
Biotechnology (GR)	18	18	14	14	21	50.0%	16.7%
Sci & Tech Edu Total:	18	18	14	14	37		
<i>NWGC UG Total:</i>					16		
<i>NWGC GR Total:</i>	129	109	75	53	75	41.5%	-41.9%
NWGC Total:	129	109	75	53	91		



Kean University

Degrees Conferred

Page 18	At-a-Glance
Page 20	Degrees Conferred by Department and Program College of Business and Public Administration
Page 21	Degrees Conferred by Department and Program College of Education
Page 22	Degrees Conferred by Department and Program College of Humanities and Social Sciences
Page 23	Degrees Conferred by Department and Program College of Natural, Applied, and Health Sciences
Page 24	Degrees Conferred by Department and Program School of Visual and Performing Arts
Page 25	Degrees Conferred by Department and Program Nathan Weiss Graduate College

Degrees Conferred, Fiscal Year 2004 - 2005

	TOTAL		BACHELOR'S		MASTER'S	
	No.	%	No.	%	No.	%
DEGREE LEVEL						
Bachelor's	1,802	73.9%	1,802	100.0%		
Master's	637	26.1%			637	100.0%
GENDER						
Male	699	28.7%	549	30.5%	150	23.5%
Female	1,740	71.3%	1,253	69.5%	487	76.5%
RACE / ETHNICITY						
Black	460	18.9%	357	19.8%	103	16.2%
Hispanic	380	15.6%	314	17.4%	66	10.4%
Asian	172	7.1%	128	7.1%	44	6.9%
White	1,337	54.8%	933	51.8%	404	63.4%
Unknown	90	3.7%	70	3.9%	20	3.1%
COLLEGE						
BPA	640	26.2%	552	30.6%	88	13.8%
EDU	749	30.7%	407	22.6%	342	53.7%
HSS	611	25.1%	492	27.3%	119	18.7%
NAHS	282	11.6%	243	13.5%	39	6.1%
NWGC	20	0.8%			20	3.1%
VPA	137	5.6%	108	6.0%	29	4.6%

* Fiscal Year 2004 - 2005 includes degrees conferred between July 1, 2004, and June 30, 2005.

** Degrees conferred by academic year is available at <http://ir.kean.edu>.

Top 10 Bachelor's Degrees Conferred

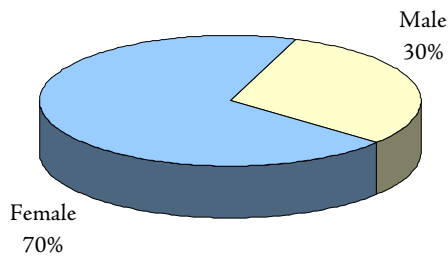
Management Science	188
Psychology	150
Elementary Education	123
Accounting	111
Early Childhood Education	109
Communication	84
Marketing	78
Criminal Justice	70
Educator of Indv. w/ Disabilities	61
Finance	61

Top 10 Master's Degrees Conferred

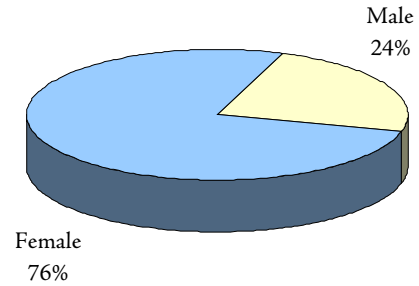
Education Administration	92
Instruction and Curriculum	73
Social Work	53
Public Administration	51
Speech Language Pathology	50
Behavioral Science	41
Special Education	41
Accounting	37
Early Childhood Education	33
Counselor Education	32

Additional information is available online at <http://ir.kean.edu>.

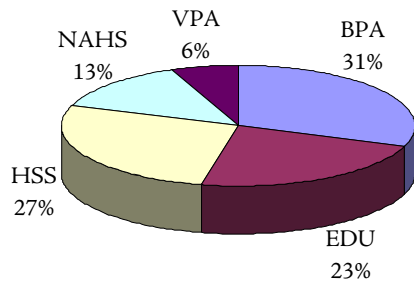
**BACHELOR'S DEGREES
BY GENDER**



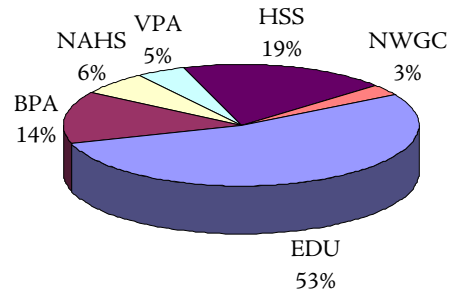
**MASTER'S DEGREES
BY GENDER**



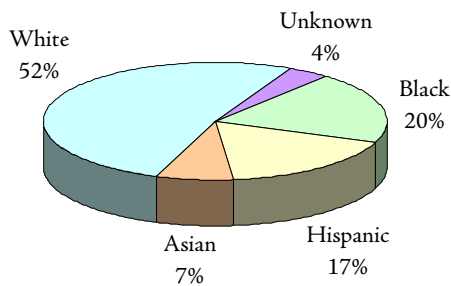
**BACHELOR'S DEGREES
BY COLLEGE**



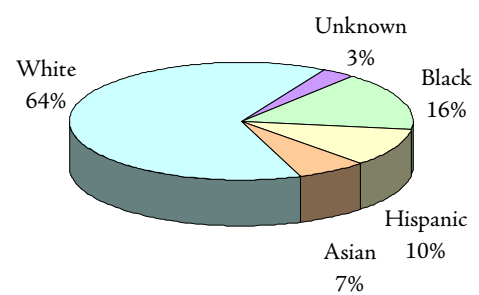
**MASTER'S DEGREES
BY COLLEGE**



**BACHELOR'S DEGREES
BY ETHNICITY**



**MASTER'S DEGREES
BY ETHNICITY**



Degrees Conferred by Department and Program College of Business and Public Administration

	FISCAL YR 2000-01	FISCAL YR 2001-02	FISCAL YR 2002-03	FISCAL YR 2003-04	FISCAL YR 2004-05	1-YEAR CHANGE	5-YEAR CHANGE
DEGREES CONFERRED							
Accounting							
Accounting (UG)	73	91	109	99	111	12.1%	52.1%
Accounting (GR)		6	23	29	37	27.6%	
Accounting Total:	73	97	132	128	148	15.6%	102.7%
Criminal Justice							
Criminal Justice (UG)	57	69	69	76	70	-7.9%	22.8%
Criminal Justice Total:	57	69	69	76	70	-7.9%	22.8%
Economics/Finance							
Economics (UG)	19	10	14	14	18	28.6%	-5.3%
Finance (UG)	55	34	58	61	61	0.0%	10.9%
Economics/Finance Total:	74	44	72	75	79	5.3%	6.8%
Management							
Management Sci. (UG)	184	181	203	213	188	-11.7%	2.2%
Management Total:	184	181	203	213	188	-11.7%	2.2%
Marketing							
Marketing (UG)	60	64	63	68	78	14.7%	30.0%
Marketing Total:	60	64	63	68	78	14.7%	30.0%
Public Adm							
Public Admin. (UG)	19	34	16	21	26	23.8%	36.8%
Public Admin. (GR)	38	34	60	66	51	-22.7%	34.2%
Public Adm Total:	57	68	76	87	77	-11.5%	35.1%
<i>BPA UG Total:</i>	<i>467</i>	<i>483</i>	<i>532</i>	<i>552</i>	<i>552</i>	<i>0.0%</i>	<i>18.2%</i>
<i>BPA GR Total:</i>	<i>38</i>	<i>40</i>	<i>83</i>	<i>95</i>	<i>88</i>	<i>-7.4%</i>	<i>131.6%</i>
BPA Total:	505	523	615	647	640	-1.1%	26.7%

Degrees Conferred by Department and Program College of Education

Degrees Conferred

	FISCAL YR 2000-01	FISCAL YR 2001-02	FISCAL YR 2002-03	FISCAL YR 2003-04	FISCAL YR 2004-05	1-YEAR CHANGE	5-YEAR CHANGE
DEGREES CONFERRED							
Comm Disorder/Deaf							
Speech, Lang Hear. Sci. (UG)	34	24	28	26	36	38.5%	5.9%
Speech Lang. Pathology (GR)	36	20	42	33	50	51.5%	38.9%
Comm Disorder/Deaf Total:	70	44	70	59	86	45.8%	22.9%
Comm Sci/Edu Svcs							
Edu/Media/Spec. (GR)	8	7	6	15	7	-53.3%	-12.5%
Reading Spec. (GR)	14	14	28	13	9	-30.8%	-35.7%
Comm Sci/Edu Svcs Total:	22	21	34	28	16	-42.9%	-27.3%
Counselor Edu							
Counselor Edu (GR)	26	25	31	31	32	3.2%	23.1%
Counselor Edu Total:	26	25	31	31	32	3.2%	23.1%
Early Childhd/Family							
Early Childhood Edu. (UG)	70	56	89	102	109	6.9%	55.7%
Early Childhood Edu. (GR)	18	16	14	13	33	153.8%	83.3%
Early Childhd/Family Total:	88	72	103	115	142	23.5%	61.4%
Edu Leadership							
Edu Admin. (GR)	55	77	107	97	92	-5.2%	67.3%
Edu Leadership Total:	55	77	107	97	92	-5.2%	67.3%
Elem Mid Sec Edu							
Elementary Edu (UG)	99	103	74	92	123	33.7%	24.2%
Instruction & Curriculum (GR)	71	73	68	63	73	15.9%	2.8%
Elem Mid Sec Edu Total:	170	176	142	155	196	26.5%	15.3%
Phys Ed/Rec/Health							
Physical Edu (UG)	43	47	41	51	54	5.9%	25.6%
Recreation Admin. (UG)	31	27	19	21	24	14.3%	-22.6%
Exercise Science (GR)				1	5	400.0%	
Phys Ed/Rec/Health Total:	74	74	60	73	83	13.7%	12.2%
Spec Edu/Indv Serv							
Educator of Indivs with Disabilities (UG)	82	87	89	60	61	1.7%	-25.6%
Special Edu (GR)	49	35	39	38	41	7.9%	-16.3%
Spec Edu/Indv Serv Total:	131	122	128	98	102	4.1%	-22.1%
EDU UG Total:	359	344	340	352	407	15.6%	13.4%
EDU GR Total:	277	267	335	304	342	12.5%	23.5%
EDU Total:	636	611	675	656	749	14.2%	17.8%

Degrees Conferred by Department and Program

College of Humanities and Social Sciences

	FISCAL Yr 2000-01	FISCAL Yr 2001-02	FISCAL Yr 2002-03	FISCAL Yr 2003-04	FISCAL Yr 2004-05	1-YEAR CHANGE	5-YEAR CHANGE
DEGREES CONFERRED							
Communication							
Communication (UG)	65	57	68	52	84	61.5%	29.2%
Communication Studies (GR)					6		
Communication Total:	65	57	68	52	90	73.1%	38.5%
English							
English (UG)	43	43	53	57	45	-21.1%	4.7%
Liberal Studies (GR)	9	6	3	4	8	100.0%	-11.1%
English Total:	52	49	56	61	53	-13.1%	1.9%
Foreign Languages							
Spanish (UG)	9	25	34	42	39	-7.1%	333.3%
Foreign Languages Total:	9	25	34	42	39	-7.1%	333.3%
History							
History (UG)	62	35	58	47	56	19.1%	-9.7%
History Total:	62	35	58	47	56	19.1%	-9.7%
Philosophy/Religion							
Philosophy and Religion (UG)	6	1	2	2	4	100.0%	-33.3%
Philosophy/Religion Total:	6	1	2	2	4	100.0%	-33.3%
Political Science							
Political Science (UG)	41	42	29	33	18	-45.5%	-56.1%
Political Science (GR)					1		
Political Science Total:	41	42	29	33	19	-42.4%	-53.7%
Psychology							
Psychology (UG)	118	130	140	132	150	13.6%	27.1%
Psych Rehab (UG)	6	5	20	8	7	-12.5%	16.7%
Behavioral Sci (GR)	32	32	29	23	41	78.3%	28.1%
DPL.School Psychology (GR)	12	10	6	8	2	-75.0%	-83.3%
Edu Psych (GR)	10	9	7	12	8	-33.3%	-20.0%
DPL.Marri & Fam Therapy (GR)		2	5	3			
Psychology Total:	178	188	207	186	208	11.8%	16.9%
Social Work							
Social Work (UG)	45	36	49	36	44	22.2%	-2.2%
Social Work (GR)	42	26	37	60	53	-11.7%	26.2%
Social Work Total:	87	62	86	96	97	1.0%	11.5%
Sociology/Anthro.							
Sociology (UG)	48	40	40	31	45	45.2%	-6.3%
Sociology/Anthro. Total:	48	40	40	31	45	45.2%	-6.3%
<i>HSS UG Total:</i>	<i>443</i>	<i>414</i>	<i>493</i>	<i>440</i>	<i>492</i>	<i>11.8%</i>	<i>11.1%</i>
<i>HSS GR Total:</i>	<i>105</i>	<i>85</i>	<i>87</i>	<i>110</i>	<i>119</i>	<i>8.2%</i>	<i>13.3%</i>
HSS Total:	548	499	580	550	611	11.1%	11.5%

Degrees Conferred by Department and Program College of Natural, Applied, and Health Sciences

Degrees Conferred

	FISCAL YR 2000-01	FISCAL YR 2001-02	FISCAL YR 2002-03	FISCAL YR 2003-04	FISCAL YR 2004-05	1-YEAR CHANGE	5-YEAR CHANGE
DEGREES CONFERRED							
Biological Sciences							
Biology (UG)	80	70	65	52	44	-15.4%	-45.0%
Medical Tech. (UG)	5	2	5	6	5	-16.7%	0.0%
Biological Sciences Total:	85	72	70	58	49	-15.5%	-42.4%
Chemistry/Physics							
Chemistry (UG)	20	12	7	7	9	28.6%	-55.0%
Chemistry/Physics Total:	20	12	7	7	9	28.6%	-55.0%
Geology/Meteorology							
Earth Science (UG)	8	8	7	11	7	-36.4%	-12.5%
Geology/Meteorology Total:	8	8	7	11	7	-36.4%	-12.5%
Health Info Mgmt							
HIM (UG)	17	14	7	9	6	-33.3%	-64.7%
Health Info Mgmt Total:	17	14	7	9	6	-33.3%	-64.7%
Math/Computer Sci							
Computer Science (UG)	63	85	84	71	56	-21.1%	-11.1%
Math. Science (UG)	16	16	12	26	34	30.8%	112.5%
Math. Edu. (GR)	2	1	2	4	2	-50.0%	0.0%
Comp/Stat/Math. (GR)		2	2	3	3	0.0%	
Math/Computer Sci Total:	81	104	100	104	95	-8.7%	17.3%
Nursing							
Nursing (UG)	60	52	46	54	56	3.7%	-6.7%
M.S.N./M.P.A. in Nursing (GR)	3		4	4	4	0.0%	33.3%
Nursing (GR)	20	15	10	24	20	-16.7%	0.0%
Nursing Total:	83	67	60	82	80	-2.4%	-3.6%
Occupational Therapy							
Occupational Therapy (UG)	21	26	27	17	14	-17.6%	-33.3%
Occupational Therapy (GR)		14		1	10	900.0%	
Occupational Therapy Total:	21	40	27	18	24	33.3%	14.3%
Technology							
Telecomm.Info.Tech. (UG)			1		3		
Tech.Edu. (UG)		5	4	1			
Electronics Tech. (UG)	11	17	18	15	9	-40.0%	-18.2%
Technology Total:	11	22	23	16	12	-25.0%	9.1%
NAHS UG Total:	301	307	283	269	243	-9.7%	-19.3%
NAHS GR Total:	25	32	18	36	39	8.3%	56.0%
NAHS Total:	326	339	301	305	282	-7.5%	-13.5%

Degrees Conferred by Department and Program School of Visual and Performing Arts

	FISCAL YR 2000-01	FISCAL YR 2001-02	FISCAL YR 2002-03	FISCAL YR 2003-04	FISCAL YR 2004-05	1-YEAR CHANGE	5-YEAR CHANGE
DEGREES CONFERRED							
Design							
Graphic Comm (UG)	7	10	13	14	12	-14.3%	71.4%
Visual Comm (UG)	16	20	16	21	32	52.4%	100.0%
Industrial Design (UG)					5		
Interior Design (UG)	13	11	10	15	30	100.0%	130.8%
Graphic Comm (GR)			4	5	16	220.0%	
Design Total:	36	41	43	55	95	72.7%	163.9%
Fine Arts							
Fine Arts (UG)	8	17	18	8	11	37.5%	37.5%
Studio Art (UG)	6	4	4	8	3	-62.5%	-50.0%
Art History (UG)	1	1	3	2	4	100.0%	300.0%
Fine Arts Edu (GR)	13	10	15	10	13	30.0%	0.0%
Fine Arts Total:	28	32	40	28	31	10.7%	10.7%
Music							
Music Edu. (UG)	4	7	2	3	6	100.0%	50.0%
Music (UG)	3	5	3		2		-33.3%
Music Total:	7	12	5	3	8	166.7%	14.3%
Theatre							
Speech & Theatre (UG)					1		
Theatre (UG)	5	2	4	4	2	-50.0%	-60.0%
Theatre Total:	5	2	4	4	3	-25.0%	-40.0%
<i>VPA UG Total:</i>	<i>63</i>	<i>77</i>	<i>73</i>	<i>75</i>	<i>108</i>	<i>44.0%</i>	<i>71.4%</i>
<i>VPA GR Total:</i>	<i>13</i>	<i>10</i>	<i>19</i>	<i>15</i>	<i>29</i>	<i>93.3%</i>	<i>123.1%</i>
VPA Total:	76	87	92	90	137	52.2%	80.3%

Degrees Conferred by Department and Program Nathan Weiss Graduate College

Degrees Conferred

	FISCAL YR 2000-01	FISCAL YR 2001-02	FISCAL YR 2002-03	FISCAL YR 2003-04	FISCAL YR 2004-05	1-YEAR CHANGE	5-YEAR CHANGE
DEGREES CONFERRED							
Grad Mgmt Studies							
MIS (GR)	28	37	44	30	17	-43.3%	-39.3%
Grad Mgmt Studies Total:	28	37	44	30	17	-43.3%	-39.3%
Sci & Tech Edu							
Biotechnology (GR)		4	6	4	3	-25.0%	
Sci & Tech Edu Total:		4	6	4	3	-25.0%	
<i>NWGC UG Total:</i>							
<i>NWGC GR Total:</i>	28	41	50	34	20	-41.2%	-28.6%
NWGC Total:	28	41	50	34	20	-41.2%	-28.6%



Kean University

Employees

Page 28

At-a-Glance

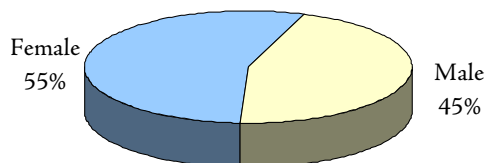
Fall 2005 Employee Demographics

	TOTAL		FACULTY		STAFF	
	TOTAL	%	#	%	#	%
TOTAL FULL-TIME	1176	100%	384	100.0%	792	100.0%
GENDER						
Male	531	45.2%	208	54.2%	323	40.8%
Female	645	54.8%	176	45.8%	469	59.2%
RACE / ETHNICITY						
Black	259	22.0%	41	10.7%	218	27.5%
Hispanic	207	17.6%	30	7.8%	177	22.3%
Asian	65	5.5%	28	7.3%	37	4.7%
White	632	53.7%	278	72.4%	354	44.7%
Unknown	13	1.1%	7	1.8%	6	0.8%
EMPLOYEE GROUP						
Faculty	384	37.3%	384	100.0%		
Administrative & Managerial	146	14.2%			146	22.6%
Professional	198	19.2%			198	30.7%
Clerk & Secretarial	176	17.1%			176	27.2%
Technical & Paraprofessional	64	6.2%			64	9.9%
Service Maintenance	165	16.0%			165	25.5%
Skilled Crafts	43	4.2%			43	6.7%
AGE						
< 30	93	7.9%	2	0.5%	91	11.5%
30 - 39	204	17.3%	38	9.9%	166	21.0%
40 - 49	265	22.5%	66	17.2%	199	25.1%
50 - 59	358	30.4%	139	36.2%	219	27.7%
60 - 69	212	18.0%	117	30.5%	95	12.0%
70 +	44	3.7%	22	5.7%	22	2.8%
PART TIME EMPLOYEES	42		8		34	
ADJUNCT FACULTY	770		770			

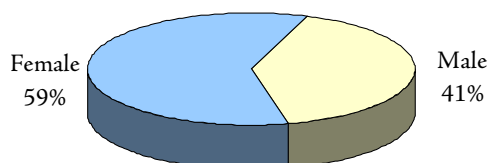
* Numbers represent full-time faculty and staff only, unless otherwise noted.

Additional information is available online at <http://ir.kean.edu>.

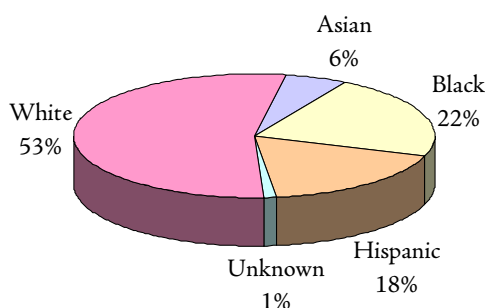
**FULL-TIME EMPLOYEES
BY GENDER**



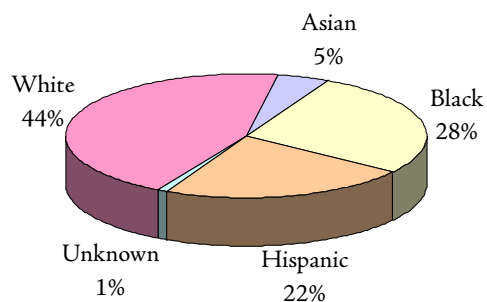
**FULL-TIME STAFF
BY GENDER**



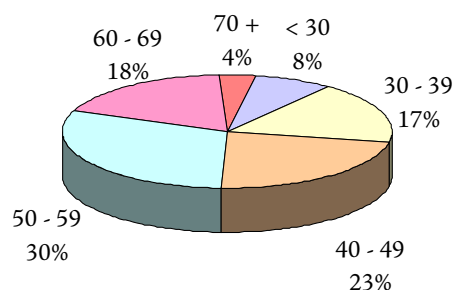
**FULL-TIME EMPLOYEES
BY RACE / ETHNICITY**



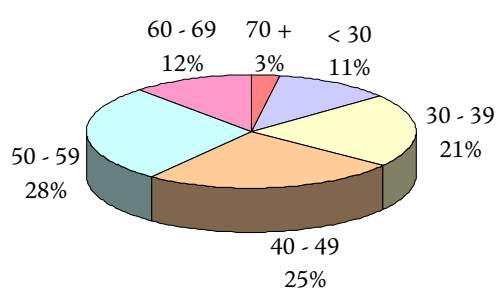
**FULL-TIME STAFF
BY RACE / ETHNICITY**



**FULL-TIME EMPLOYEES
BY AGE GROUP**



**FULL-TIME STAFF
BY AGE GROUP**



The charts for full-time faculty are located in the “Faculty” section.



Kean University



Faculty

Page 32	At-a-Glance
Page 34	Faculty Trends
Page 36	Full-Time Faculty by Department College of Business and Public Administration
Page 37	Full-Time Faculty by Department College of Education
Page 38	Full-Time Faculty by Department College of Humanities and Social Sciences
Page 39	Full-Time Faculty by Department College of Natural, Applied, and Health Sciences
Page 39	Full-Time Faculty by Department School of Visual and Performing Arts
Page 39	Full-Time Faculty by Department Nathan Weiss Graduate College
Page 40	Distribution of Full-Time Faculty by Age

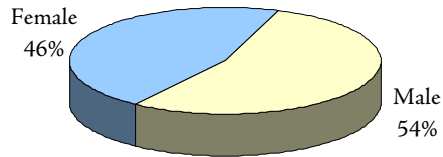
Fall 2005 Faculty Demographics

	UNIVERSITY		COLLEGES					
	TOTAL	%	BPA	EDU	HSS	NAHS	NWGC	VPA
TOTAL FULL-TIME	384	100%	50	92	109	76	7	50
GENDER								
Male	208	54.2%	32	32	61	46	5	32
Female	176	45.8%	18	60	48	30	2	18
RACE / ETHNICITY								
Black	41	10.7%	7	9	14	5	2	4
Hispanic	30	7.9%	4	10	10	3	1	2
Asian	28	7.3%	5	2	5	14	0	2
White	278	72.4%	34	69	79	50	4	42
Unknown	7	1.8%	0	2	1	4	0	0
TENURE STATUS								
Tenured	277	72.1%	34	63	87	56	1	36
Tenure Track	90	23.4%	14	23	19	17	6	11
Not on Tenure Track	17	4.4%	2	6	3	3		3
RANK								
Professor	147	38.3%	18	29	50	33	0	17
Associate Professor	98	25.5%	20	27	23	13	1	14
Assistant Professor	136	35.4%	12	33	36	30	6	19
Instructor	3	0.8%		3				
EDUCATION								
Highest Degree								
Doctorate	312	81.3%	39	80	101	62	7	23
Master's	67	17.4%	9	11	8	14		25
Bachelor's	2	0.5%						2
Unknown	3	0.8%	2	1				
Terminal Degree in Field	333	86.7%	40	81	103	62	7	40
AGE								
Average Age	55		55	59	56	51	41	51
Faculty >= 60	139	36.0%	18	44	44	23	0	10
PART-TIME FACULTY	8		1	6		1		
ADJUNCT FACULTY	770							

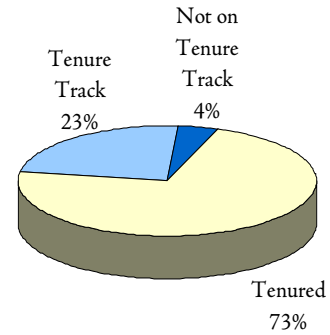
* Numbers represent full-time faculty only, unless otherwise noted.

Additional information is available online at <http://ir.kean.edu>.

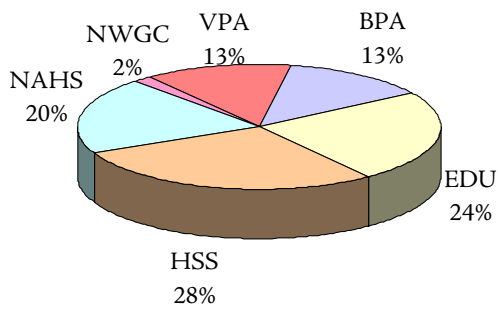
**FULL-TIME FACULTY
BY GENDER**



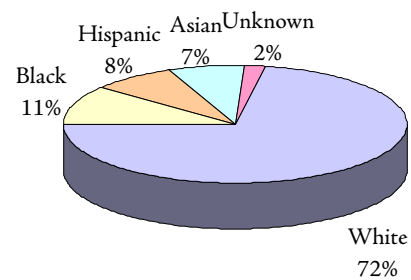
**FULL-TIME FACULTY
BY TENURE STATUS**



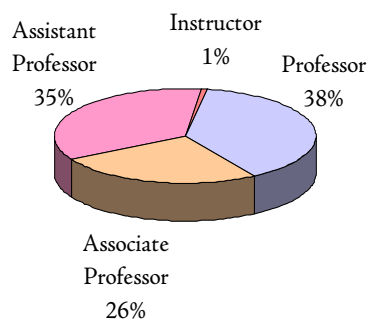
**FULL-TIME FACULTY
BY COLLEGE**



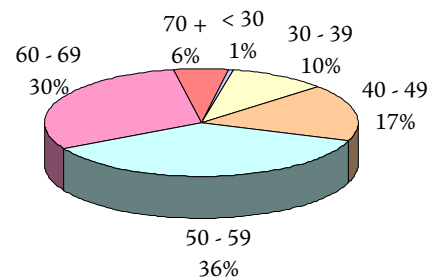
**FULL-TIME FACULTY
BY RACE / ETHNICITY**



**FULL-TIME FACULTY
BY RANK**



**FULL-TIME FACULTY
BY AGE GROUP**



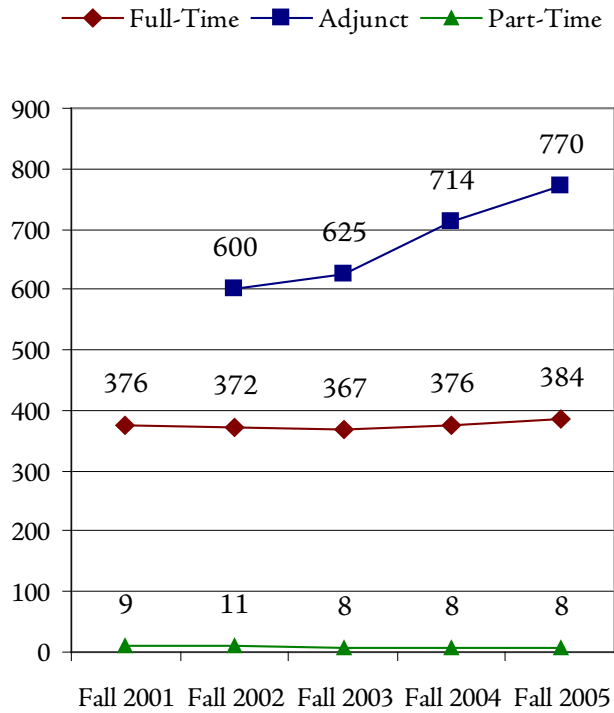
Faculty Trends (Fall 2001 - Fall 2005)

	FALL 2001	FALL 2002	FALL 2003	FALL 2004	FALL 2005	1-YEAR CHANGE	5-YEAR CHANGE
TOTAL FULL=TIME	376	372	367	376	384	2.1%	2.1%
GENDER							
Male	198	200	198	205	208	1.5%	5.1%
Female	178	172	169	171	176	2.9%	-1.1%
RACE / ETHNICITY							
Black	35	39	38	38	41	7.9%	17.1%
Hispanic	25	26	24	26	30	15.4%	20.0%
Asian	32	31	32	32	28	-12.5%	-12.5%
White	284	276	273	275	278	1.1%	-2.1%
Unknown	0	0	0	5	7	40.0%	
TENURE STATUS							
Tenured	279	275	276	279	277	-0.7%	-0.7%
Tenure Track	92	93	89	94	90	-4.3%	-2.2%
Not on Tenure Track	5	4	2	3	17	466.7%	240.0%
RANK							
Professor	153	149	150	148	147	-0.7%	-3.9%
Associate Professor	96	92	90	97	98	1.0%	2.1%
Assistant Professor	125	129	127	131	136	3.8%	8.8%
Instructor	2	2	0	0	3		50.0%
EDUCATION							
Highest Degree							
Doctorate	303	297	303	314	312	-0.6%	3.0%
Master's	73	75	64	61	67	9.8%	-8.2%
Bachelor's	0	0	0	1	2	100.0%	
Unknown	0	0	0	0	3		
Terminal Degree in Field	306	320	323	340	333	-2.1%	8.8%
AGE							
Average Age	52.83	53.01	53.82	54.32	54.68	0.7%	3.5%
Faculty >= 60	99	109	118	129	139	7.8%	40.4%
PART-TIME FACULTY	9	11	8	8	8	0.0%	-11.1%
ADJUNCT FACULTY		600	625	714	770	7.8%	28.3%**

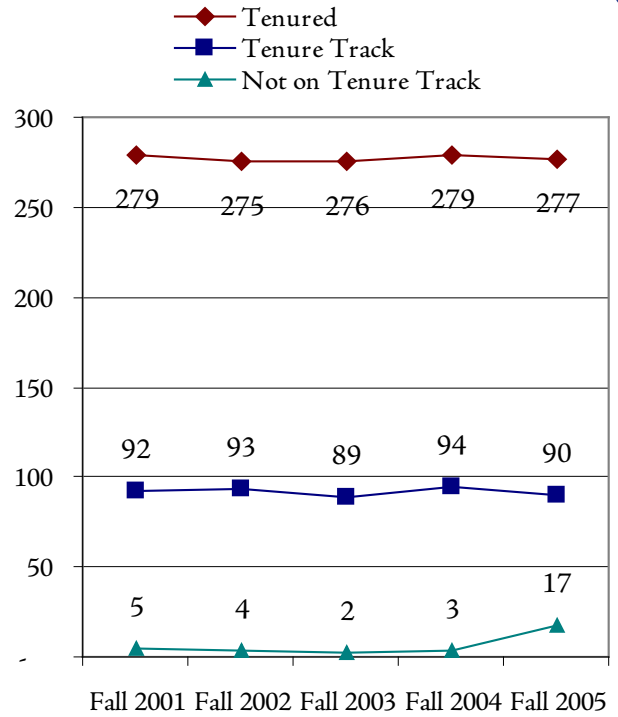
* Numbers represent full-time faculty only, unless otherwise noted.

** 4-Year Change

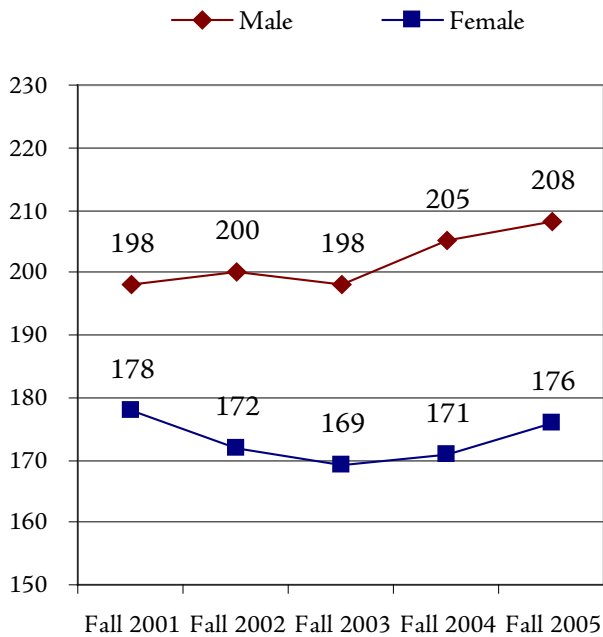
FACULTY COUNT FALL 2001 - FALL 2005



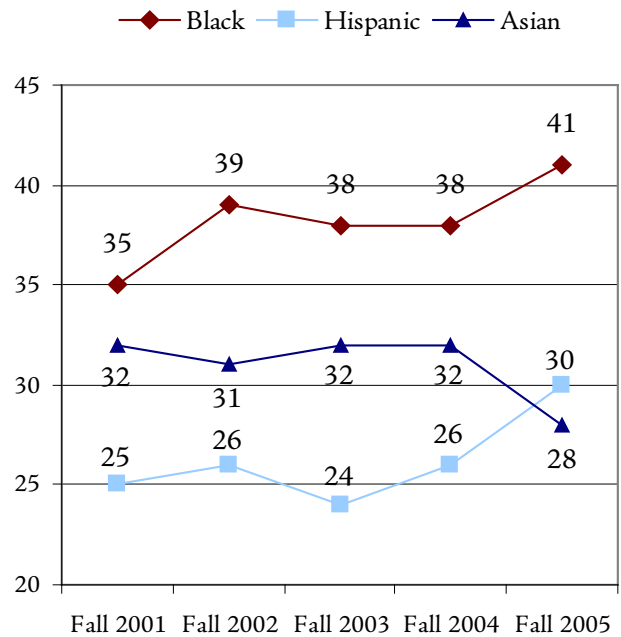
TENURE STATUS FALL 2001 - FALL 2005



GENDER FALL 2001 - FALL 2005



MINORITY FACULTY COUNT FALL 2001 - FALL 2005



Full-Time Faculty by Department College of Business *and* Public Administration

	FALL 2001	FALL 2002	FALL 2003	FALL 2004	FALL 2005	1-YEAR CHANGE	5-YEAR CHANGE
NUMBER OF FACULTY							
Accounting	7	7	7	9	9	0.0%	28.6%
Criminal Justice					5	*	*
Economics/Finance	9	10	11	10	10	0.0%	11.1%
Management					13	**	**
Marketing					6	**	**
Mgmt/Marketing	16	16	17	17		**	**
Public Administration	11	12	11	12	7	*	*
BPA Faculty Total:	43	45	46	48	50	4.2%	16.3%

* The Public Administration Department separated into two departments (Public Administration; Criminal Justice) in 2005.

** The Management and Marketing Department separated into two departments (Management; Marketing) in 2005.

Full-Time Faculty by Department College of Education

Faculty

	FALL 2001	FALL 2002	FALL 2003	FALL 2004	FALL 2005	1-YEAR CHANGE	5-YEAR CHANGE
NUMBER OF FACULTY							
Comm Disorder/Deaf	9	9	8	9	9	0.0%	0.0%
Comm Sci/Edu Svcs	11	11	11	11	11	0.0%	0.0%
Counselor Edu					5	*	*
Early Childhd/Family	12	11	11	8	10	25.0%	-16.7%
Edu Leadership				6	5	**	**
Elem Mid Sec Edu				21	24	**	**
Instru/Edu Leadership	25	27	27			**	**
Phys Ed/Rec/Health	18	17	17	17	18	5.9%	0.0%
Special Edu	15	16	16	16	10	*	*
EDU Faculty Total:	90	91	90	88	92	4.5%	2.2%

* The Special Education and Counseling Department separated into two departments (Special Education; Counselor Education) in 2005.

** The Instruction and Educational Leadership Department separated into two departments (Educational Leadership; Elementary, Middle, and Secondary Education) in 2005.

Full-Time Faculty by Department College of Humanities and Social Sciences

	FALL 2001	FALL 2002	FALL 2003	FALL 2004	FALL 2005	1-YEAR CHANGE	5-YEAR CHANGE
NUMBER OF FACULTY							
Communication	10	11	11	7	7	0.0%	-30.0%
English	28	26	25	26	25	-3.8%	-10.7%
Foreign Languages	8	7	7	7	7	0.0%	-12.5%
History	10	10	9	12	12	0.0%	20.0%
Philosophy/Religion	7	7	7	7	7	0.0%	0.0%
Political Science	8	8	8	7	7	0.0%	-12.5%
Psychology	21	20	20	21	21	0.0%	0.0%
Social Work	10	10	10	10	11	10.0%	10.0%
Sociology/Anthropology	12	12	12	12	12	0.0%	0.0%
HSS Faculty Total:	114	111	109	109	109	0.0%	-4.4%

Full-Time Faculty by Department College of Natural, Applied, and Health Sciences

	FALL 2001	FALL 2002	FALL 2003	FALL 2004	FALL 2005	1-YEAR CHANGE	5-YEAR CHANGE
NUMBER OF FACULTY							
Biological Sciences	18	15	15	14	15	7.1%	-16.7%
Chemistry/Physics	13	12	13	12	11	-8.3%	-15.4%
Geology/Meteorology	8	9	8	9	9	0.0%	12.5%
Health Info Mgmt	3	3	3	2	2	0.0%	-33.3%
Math/Computer Sci	26	27	25	25	24	-4.0%	-7.7%
Nursing	7	8	8	6	7	16.7%	0.0%
Occupational Therapy	7	6	5	5	3	-40.0%	-57.1%
Technology	6	5	6	7	5	-28.6%	-16.7%
NAHS Faculty Total:	88	85	83	80	76	-5.0%	-13.6%

Full-Time Faculty by Department School of Visual and Performing Arts

	FALL 2001	FALL 2002	FALL 2003	FALL 2004	FALL 2005	1-YEAR CHANGE	5-YEAR CHANGE
NUMBER OF FACULTY							
Design	12	12	12	13	14	7.69%	16.7%
Fine Arts	16	15	14	17	17	0.0%	6.3%
Media & Film				4	5	25.0%	
Music	8	8	8	8	8	0.0%	0.0%
Theatre	5	5	5	6	6	0.0%	20.0%
VPA Faculty Total:	41	40	39	48	50	4.1%	22.0%

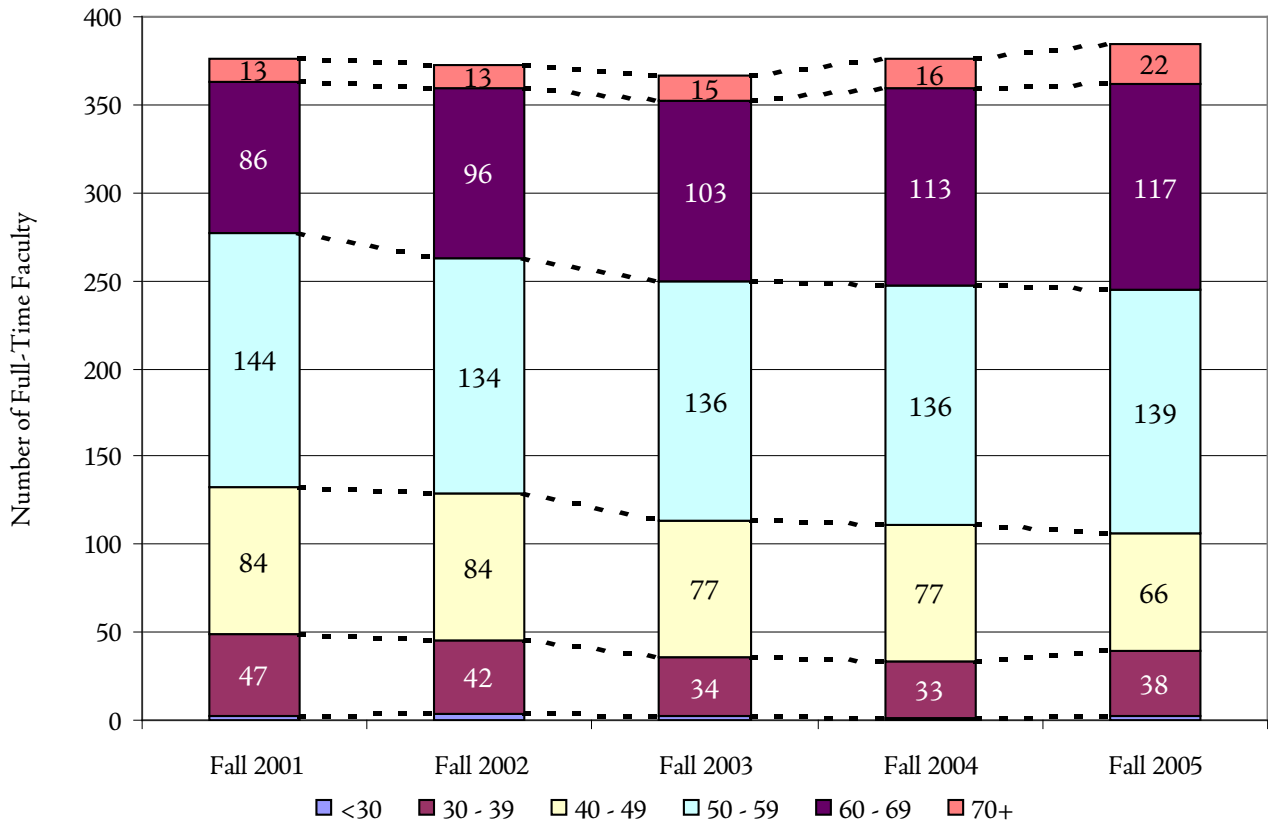
Full-Time Faculty by Department Nathan Weiss Graduate College

	FALL 2001	FALL 2002	FALL 2003	FALL 2004	FALL 2005	1-YEAR CHANGE	5-YEAR CHANGE
NUMBER OF FACULTY							
Grad Mgmt Studies					2		
Sci & Tech Edu				3	5	66.7%	
NWGC Faculty Total:				3	7		

Distribution of Full-Time Faculty by Age

	FALL 2001	FALL 2002	FALL 2003	FALL 2004	FALL 2005		5-YEAR CHANGE
					No.	%	
AGE							
< 30	2	3	2	1	2	0.5%	0.0%
30 - 39	47	42	34	33	38	9.9%	-19.1%
40 - 49	84	84	77	77	66	17.2%	-21.4%
50 - 59	144	134	136	136	139	36.2%	-3.5%
60 - 69	86	96	103	113	117	30.5%	36.0%
70 +	13	13	15	16	22	5.7%	69.2%
TOTAL	376	372	367	376	384	100%	2.1%
AVERAGE AGE	52.83	53.01	53.82	54.32	54.68		3.5%

Distribution of Full-Time Faculty by Age Group Fall 2001 - Fall 2005





Office of Institutional Research
Kean University
1000 Morris Avenue
Union, New Jersey 07083
<http://ir.kean.edu>
908.737.3470

Second Majors by Program

	FALL 2001	FALL 2002	FALL 2003	FALL 2004	FALL 2005	1-YEAR CHANGE	5-YEAR CHANGE
ENROLLMENT							
Accounting		2	2	2			
Art History	5	6	6	1	3	200.0%	-40.0%
Biology	14	10	15	13	8	-38.5%	-42.9%
Chemistry	4	3	1	1	2	100.0%	-50.0%
Communication	17	24	27	26	15	-42.3%	-11.8%
Computer Science	2	3	3	4	3	-25.0%	50.0%
Criminal Justice	1	1	2	2	2	0.0%	100.0%
Earth Science	60	46	44	35	34	-2.9%	-43.3%
Economics	17	14	11	15	9	-40.0%	-47.1%
Electronics Tech.				1			
Elementary Edu	1	1					
English	153	132	126	137	152	10.9%	-0.7%
Finance	5	6	4	2	5	150.0%	0.0%
Fine Arts	10	7	11	12	16	33.3%	60.0%
HIM	1						
History	83	64	64	70	73	4.3%	-12.0%
Industrial Design				1	1	0.0%	
Liberal Studies				16	20	25.0%	
Management Sci.	6	4	3	7	5	-28.6%	-16.7%
Marketing			1	1	1	0.0%	
Math. Science	34	32	28	19	21	10.5%	-38.2%
Music			2	2	2	0.0%	
Occupational Therapy				1			
Philosophy and Religion	2	1	2	1	4	300.0%	100.0%
Physical Edu	1		1				
Political Science	6	4	6	7	10	42.9%	66.7%
Psych Rehab			1				
Psychology	117	103	139	191	167	-12.6%	42.7%
Public Admin.	2	2	2	3	2	-33.3%	0.0%
Recreation Admin.	2	2		1			
Sociology	61	51	49	45	34	-24.4%	-44.3%
Spanish	61	45	44	68	53	-22.1%	-13.1%
Speech & Theatre	1						
Theatre	7	6	5	4	6	50.0%	-14.3%
Second Majors Total	673	569	599	688	648		